

Income, consumption and prices

1. Developments in income and consumption

Concepts of income

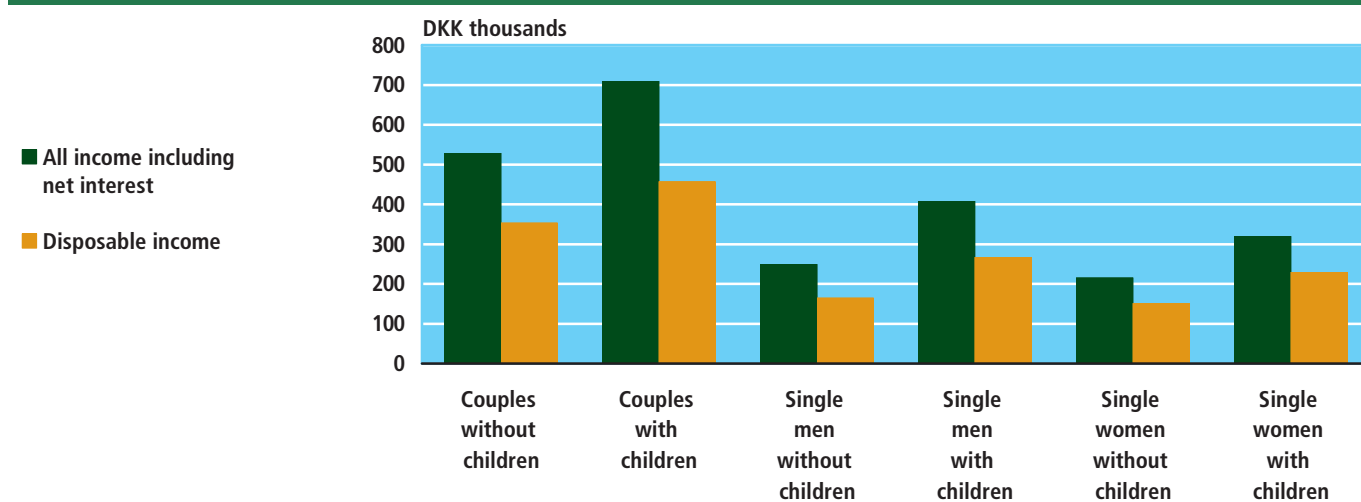
Income statistics comprise family-related as well as person-related statistics. The central concepts are *family income* and *personal income*. Family income is the sum of the following income types: Earned income, net property income, transfer income and other family income and personal income is the sum of: Earned income, property income, transfer income and other personal income.

Couples with children earn most

When considering families, couples with children had the highest average income in 2006 of DKK 709,300. The corresponding figure for couples without children was DKK 528,500. When making such comparisons, it should be noted that couples without children are normally older than couples with children and that children may contribute to total family income to some extent.

Figure 1

Average family income. 2006



See table 217.

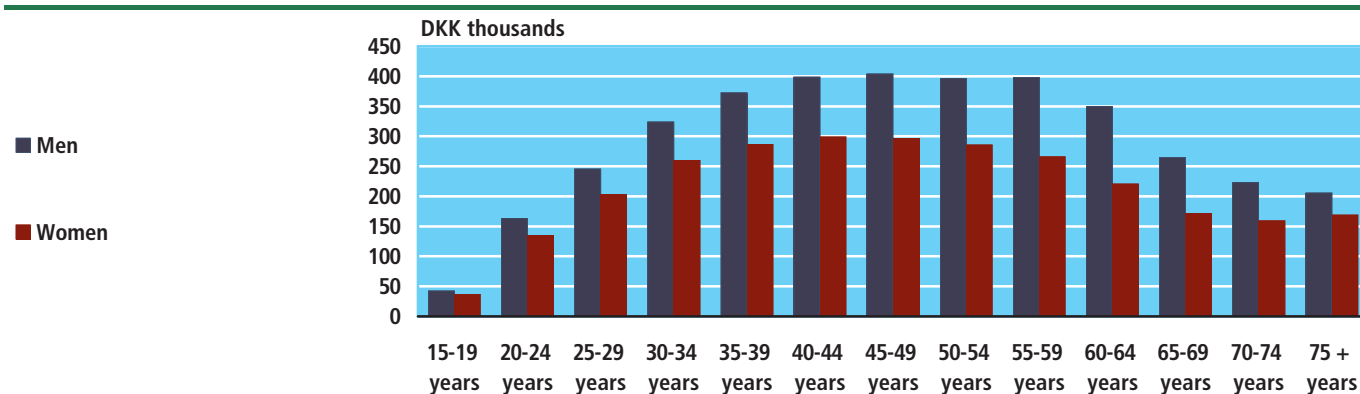
Men earn more than women

In 2006, the average personal income for persons aged 15 and above was DKK 261,900. Men had larger incomes than women as men's average income was DKK 308,800, while that of women was DKK 221,500.

Income, consumption and prices

Figure 2

Average personal income by age group. 2006



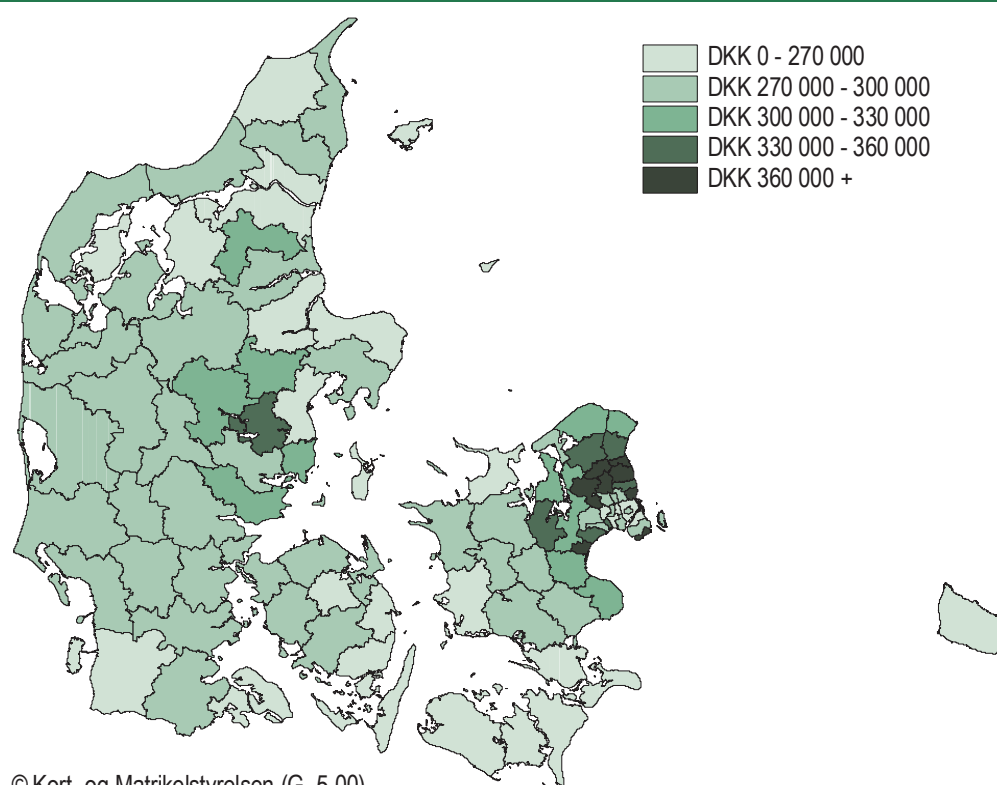
See table 226.

Wealthiest municipalities north of Copenhagen

Average family income after taxes, i.e. the disposable family income, was DKK 279,700 in 2006. The highest average disposable family incomes were recorded in the municipalities north of Copenhagen Municipality. Family income was DKK 476,600 in Rudersdal and DKK 470,300 in Gentofte. The lowest average family incomes were found in Copenhagen with DKK 218,900 and in Lolland with DKK 232,400.

Figure 3

Average family income in municipalities in DKK. 2006

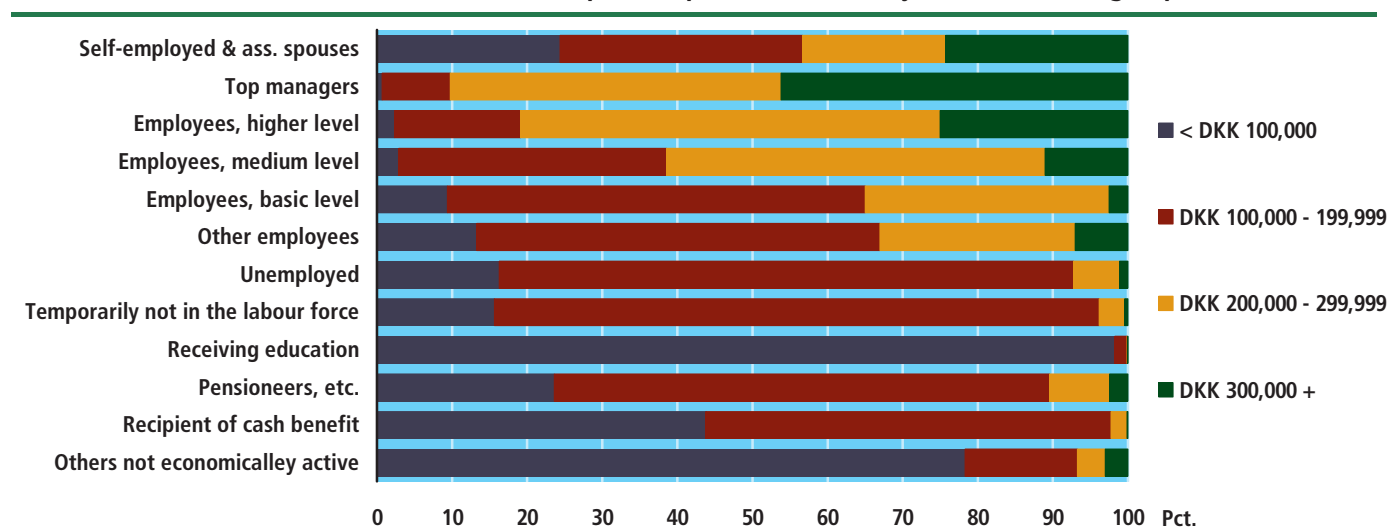


Income, consumption and prices

Personal income by socio-economic status

When considering disposable personal incomes as they relate to socio-economic status, it is seen that only 0.7 per cent of all top-level managers (salaried employees at upper levels) made less than DKK 100,000 in 2006. When considering the other end of the scale, 98.2 per cent of all students and 43.8 per cent of all recipient of cash benefit had incomes of less than DKK 100,000.

Figure 4 Distribution of disposable personal income by socio-economic groups. 2006

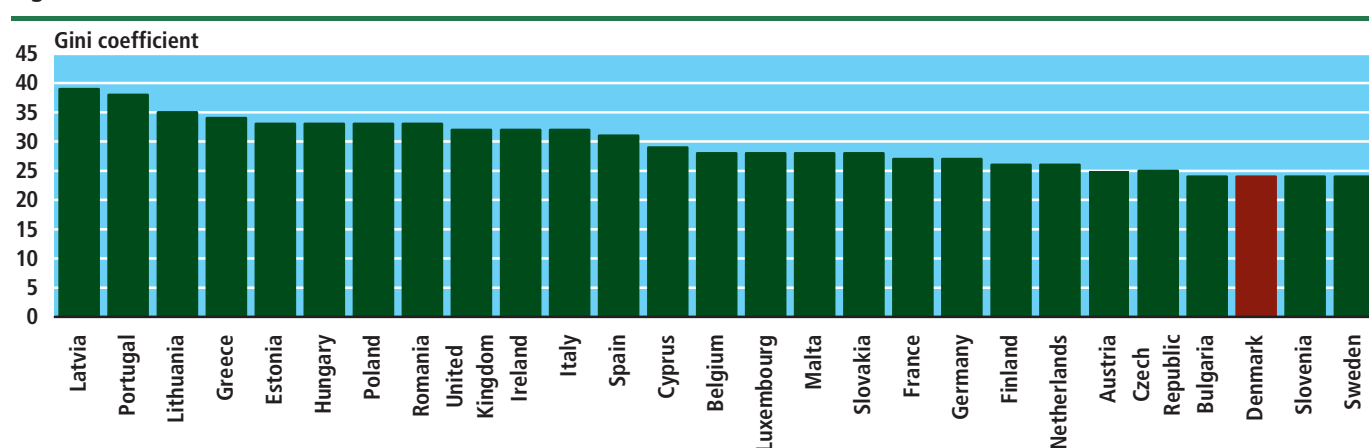


See table 222.

Denmark accounts for the greatest even income distribution

The Gini coefficient is used for measuring the way in which income in a society is distributed. The Gini coefficient shows the share of total incomes that has to be redistributed in order to achieve complete evenness. The more uneven the distribution, the greater the Gini coefficient is in the country.

Figure 5 Gini coefficients in EU27. 2006



Source: Eurostat.

Income, consumption and prices

If the value of the Gini coefficient is 0, incomes are completely evenly distributed – i.e. everybody has exactly the same income. However, if the value is 100, incomes are completely unevenly distributed, i.e. one person accounts for all income in the country. The figures show that Denmark, Slovenia and Sweden account for the most evenly distributed income in Europe, while the most uneven income distribution is accounted for by Latvia and Portugal.

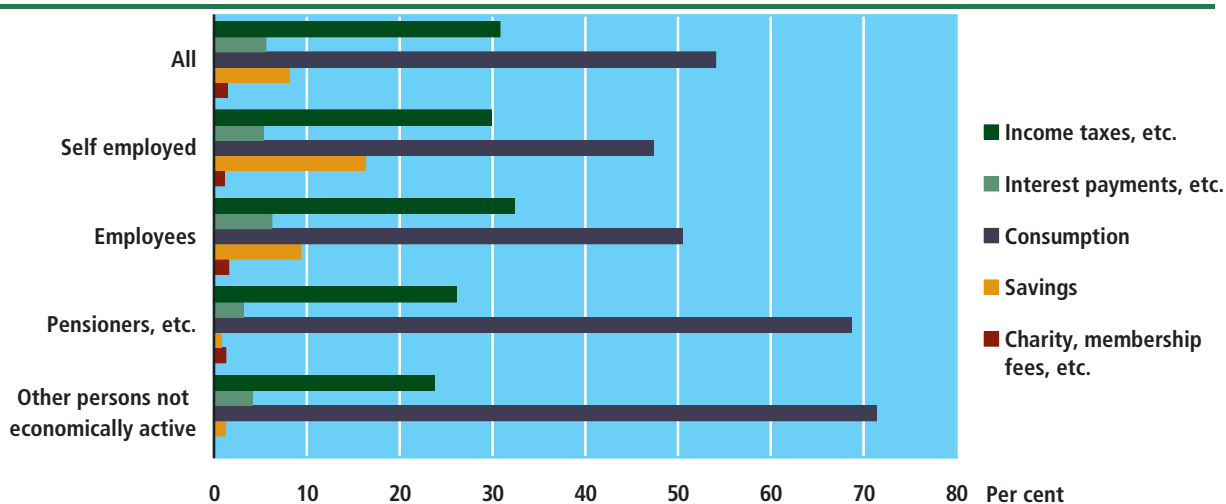
2. How is income spent?

The main part is spent on consumption

The household budget survey carried out by Statistics Denmark, which involves a study of private household finances, makes it possible to see how total household income is spent. According to the somewhat wider concept of income in the consumption survey, an average 2005 household had a total income of DKK 504,912. However, a large part of this income was not at the disposal of the household due to income tax, etc., and any interest payable on household debts (including mortgages) – DKK 183,889. The amount left to average households was DKK 321,024. The main part of this amount was spent on consumption – DKK 272,977 – while DKK 40,955 was used for savings (including pension savings and savings tied up in real property). The remaining DKK 7,091 was spent on membership fees, gifts, and charity.

Figure 6

How income is spent in selected households – per cent of total income. 2005



See table 229.

Self-employed and employee households pay most in income taxes

In 2005, self-employed and employee households constituted the groups where income taxes, etc. accounted for the largest percentage of the total income. Pensioner households and other households made up of persons not economically active (social security recipients, students, etc.) were characterized by spending a considerably greater percentage of their income on consumption than self-employed and employee households. Pensioners were also characterized by having the least savings.

Income, consumption and prices

Households differ a lot

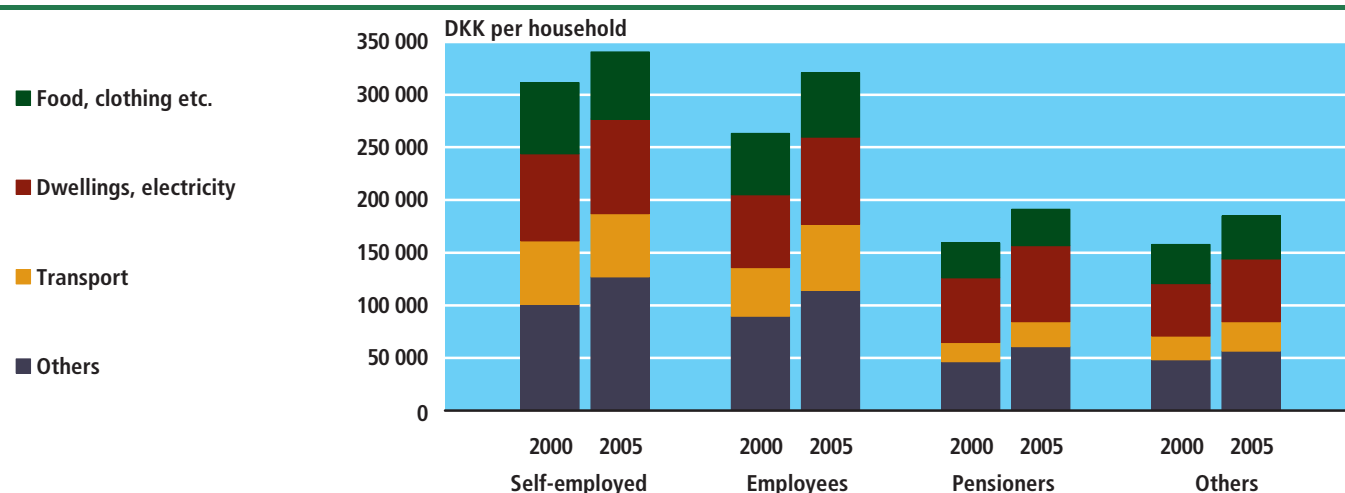
When assessing these differences, it should be noted that households vary greatly in nature. Households where the main breadwinner is an employee or self-employed are significantly larger than other household. These types of households are home to 2.5 and 2.3 persons per household on average, respectively, whereas the corresponding figure for pensioners' households is 1.4 persons and for other households 2.1 persons per household. Total income is significantly lower in households not economically active: The average income of pensioners' households is DKK 278,405, while that of households with other persons not economically active is DKK 259,018.

Employee households have the highest increase in consumer spending

From 2000 to 2005, employee households have accounted for the greatest increase in consumer spending (22 per cent), followed by pensioners (20 per cent) and households not economically active (17 per cent), while the consumer spending of the self-employed has increased by 9 per cent. The varying developments for the different groups can in large be attributed to the varying developments of the groups as a whole and to a lesser extent to the possible changes in the composition of each group. The statistical data are compiled at current prices, implying that inflation is not taken into account.

Figure 7

Change in consumer spending from 2000 to 2005



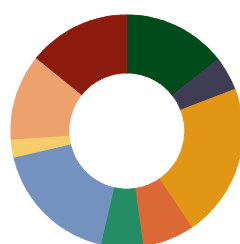
Most money was spent on housing

Housing constituted the largest single consumption item as housing consumption accounted for 22 per cent of total consumption in 2005, i.e. rent in rented accommodation and imputed rent in owner-occupied housing, plus maintenance, etc., not including an additional 7 per cent for heating and electricity. 18 per cent was spent on transport, etc., while food, beverages, and tobacco accounted for 14 per cent, the same as the item other goods and services, which includes expenditure on education and child care, restaurants and hotels, various services, insurance, etc. Recreational equipment and entertainment accounted for 12 per cent, while clothing and footwear accounted for only 5 per cent.

Income, consumption and prices

Figure 8

Consumption by goods/services. 2005



■ Food, beverage, and tobacco, 14 per cent
 ■ Housing, 22 per cent
 ■ Furniture, etc., 6 per cent
 ■ Medical products and services, 3 per cent
 ■ Other goods and services, 14 per cent

■ Clothing and footwear, 5 per cent
 ■ Fuels and electricity, 7 per cent
 ■ Transport, etc., 18 per cent
 ■ Recreational equipment, entertainment etc., 12 per cent

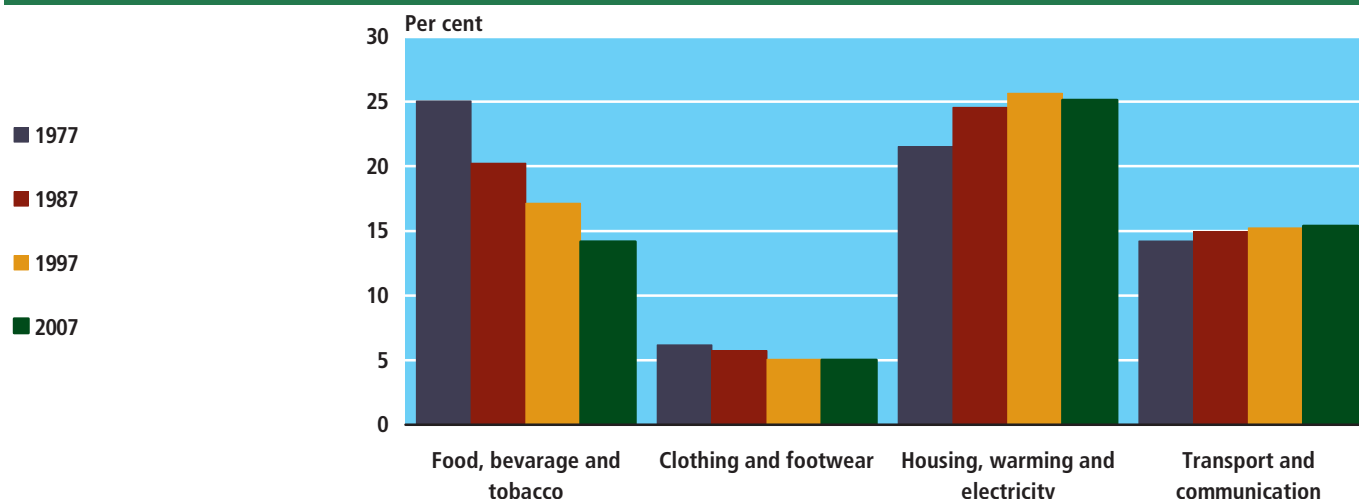
See table 229.

Danes spend less on food and more on housing

The composition of consumption has undergone major changes over a long period of time. Since 1977, the consumption of food, beverages and tobacco has fallen from 25 per cent of the total consumption of private households to less than 15 per cent in 2007. Conversely, expenditure for housing, heating, and electricity has increased from 21 per cent in 1977 to 25 per cent in 2007. The consumption of clothing and footwear has fallen from 6 per cent in 1977 to 5 per cent in 2007, while expenditure for transport and communications have increased from 14 per cent in 1977 to 15 per cent in 2007.

Figure 9

Selected consumption items' share of total consumption



The consumption of beer, wine and spirits decreased in 2006

In 2006, the average beer consumption per citizen decreased compared to 2005 due to decreased domestic and cross-border sales. Also consumption of wine were reduced. While domestic sales of wine were reduced, a minor increase in cross-border sales were seen. Total consumption of spirits and alcopops were reduced primarily due to reduced cross-border sales of spirits.

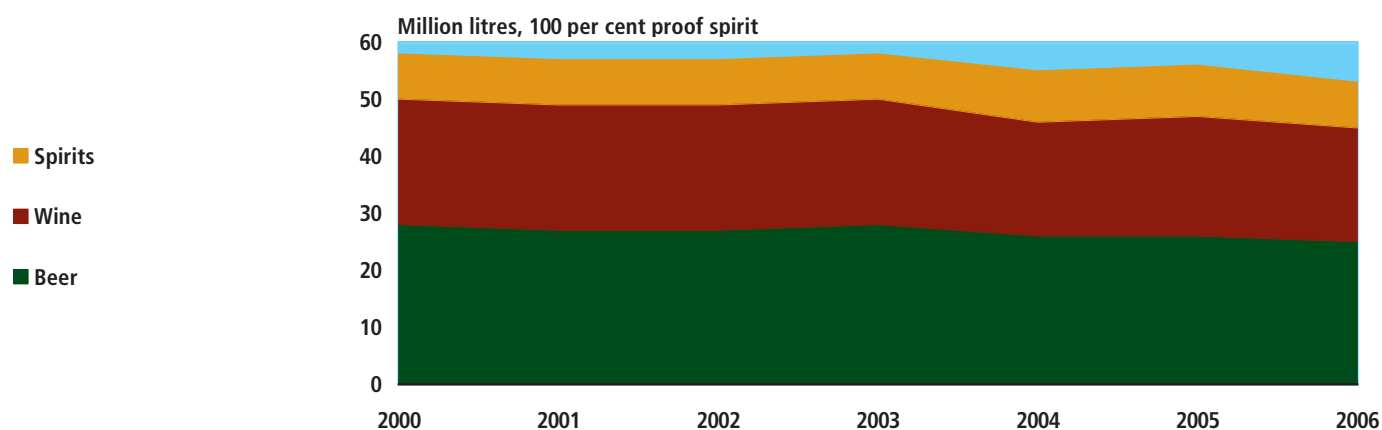
In 2006 the average consumption per citizen of pure alcohol was 10,0 litres. This is a 0.4 litres reduction compared to 2005. For all types of alcohol, measured as pure alcohol, consumption declined. Consumption of beer fell from 26 million litres in

Income, consumption and prices

2005 to 25 million litres in 2006. Wine fell from 21 million litres to 20 million litres while consumption of spirits and alcopops were reduced from 9 to 8 million litres in 2006.

Figure 10

Total consumption of dutiable alcohol



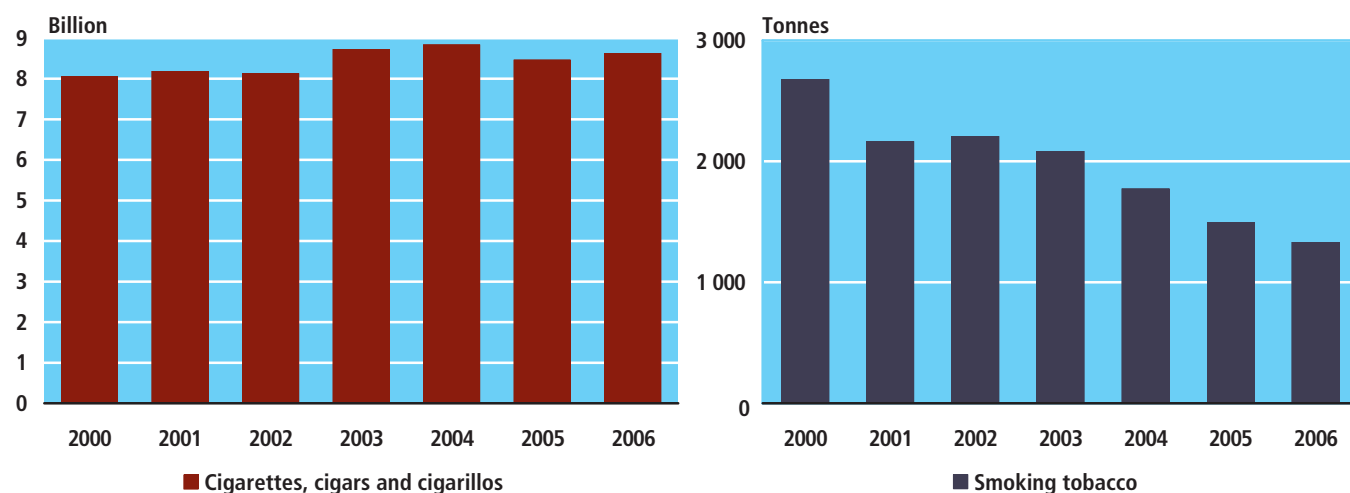
See table 235.

Average cigarette consumption per citizen older than 14 years unchanged in 2006

Total consumption of cigarettes, cigarillos and cigars increased 2.0 per cent in 2006 compared to last year, due to increased domestic sales. The average cigarette consumption per citizen over 14 years were 1,924 pieces which is similar to 2005.

Figure 11

Consumption of tobacco



See table 235.

Income, consumption and prices

3. Households and the public sector

Indirect subsidies from the public sector

The household budget survey also calculates the value of the indirect public subsidies that households may be said to receive insofar as they utilize free or cost-reduced services in healthcare, education, and childcare. On the other hand, part of all household consumption actually constitutes payments to the public sector insofar as such consumption is liable to VAT or other taxes/duties. The net result of such transfers back and forth between individual households and the public sector can be calculated as shown below.

Household transfers to and from the public sector. 2005

	Age group					
	All	17-29	30-49	50-59	60-66	67 +
	DKK thousands					
Transfers to the public sector	220	139	281	279	205	119
Income taxes, etc.	156	93	203	201	139	79
VAT, duties, property taxes, etc.	65	45	78	78	66	41
Transfers from the public sector	146	122	153	95	160	187
Transfer income	83	57	63	58	136	135
Selected indirect transfers	63	66	91	37	24	52
Net transfers to the public sector	75	17	128	184	45	-68
Average household income	505	324	643	636	454	284

Here, households are divided into categories according to the age of the main breadwinner. When assessing these statistics, it should be noted that households in the younger as well as older categories are relatively small, whereas households in the 30-59 age group are larger, usually comprising two economically active adults.

Income taxes, etc., also include subscriptions to unemployment insurance funds. Income transfers comprise a number of transfer incomes, including old-age pensions, cash benefits, sickness benefits, unemployment benefits, housing/rent benefits, and family allowances. As mentioned above, *selected transfers* include the most important services offered in healthcare, education, and childcare; subsidies for medical products have not, however, been included for practical reasons.

Net transfers to the public sector increase with age

It is clear that net transfers from households to the public sector increase with age until the age of 60. From this age onwards, it becomes common to receive early retirement benefits and old-age pension benefits so for the older age group public transfers to households exceed the transfers made from households to the public sector in the form of taxes and duties.

4. Prices

Consumer price index and price index for domestic supply

The consumer price index shows the trend of the prices typically charged to consumers for goods and services. Real prices, including VAT and duties charged to consumers, are used for estimating price trends. The trend in the consumer price index reflects a country's rate of inflation, whereas the price trend in the first chain of turnover is reflected by the price index for domestic supply. Importers' real purchase prices, excluding VAT and duties, as well as producers' real sales prices, excluding VAT and duties, are used as the basis for estimating the price index for domestic supply.

Greater fluctuation in the price index for domestic supply

Generally, the price index for domestic supply fluctuates more than the consumer price index. This is mainly due to the fact that the price index for domestic supply includes a number of raw materials for which the prices fluctuate relatively much, and which are not comprised by the consumer price index.

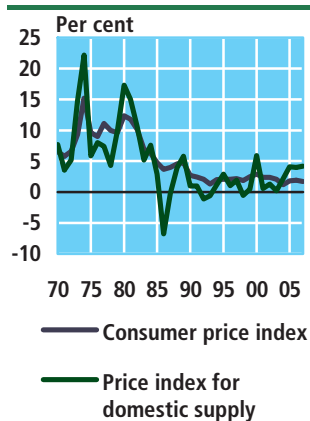
Inflation peaked in 1974

In 1974, inflation peaked with an annual change in the consumer price index of approximately 15 per cent and a change in the price index for domestic supply of approximately 22 per cent. In 1980, the annual change in the consumer price index was approximately 12 per cent, while the corresponding figure for the price index for domestic supply was approximately 17 per cent. The enormous oil price increases during these periods affected the price index for domestic supply to a greater degree than the other indices due to the greater weight of fuels. The repeated devaluation of the Danish krone at the end of the 1970s was also instrumental in increasing import prices, which also have greater weight in the price index for domestic supply. There was a fall in the price index for domestic supply in 1986-1987, 1992-1993 and 1998, while the consumer price index has increased during the entire period since 1970, which has resulted in higher prices charged to consumers.

Sub-indices for goods and services

Figure 13 illustrates the annual changes in the consumer price index by goods and services. Like the overall consumer price index, these indices reflect the high levels of inflation from the early 1970s to the early 1980s. The increases in the services index were greater than those in the goods index during the periods before and after the oil crises. Since the end of the 1980s, the services index has been higher than the goods index. This may be partly attributed to the fact that the services index to a greater extent than the goods index is influenced by developments in wages and salaries.

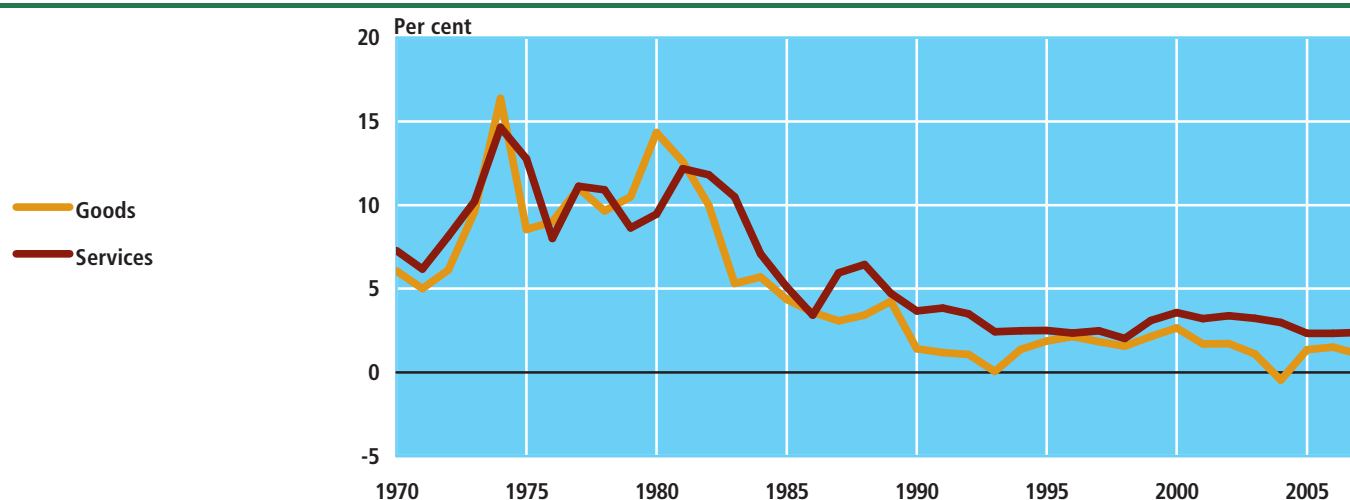
Figure 12
Annual changes in price indices



See table 232 and 237.

Income, consumption and prices

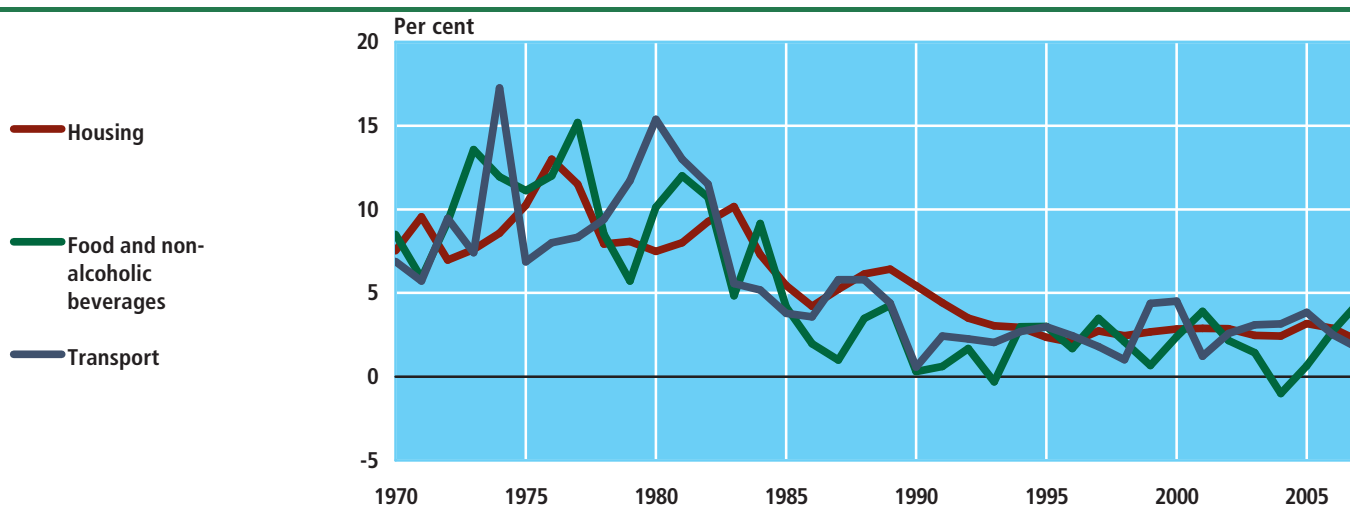
Figure 13 Annual changes in price indices



The housing index, the food index, and the transport index

Figure 14 shows the annual changes in three of the sub-indices of the consumer price index: The housing index, the food index, and the transport index. Generally, these sub-indices show the same overall trend as the consumer price index, i.e. greatest change during the period around the two oil crises. From 2002 to 2006, the growth rate on food prices has been lower than that of housing and transport. In 2004, food prices were decreasing, while they in the following years have increased more and more. In 2007, the food prices increased somewhat more than the prices for housing and transport. The price development on transport and housing has in the period from 2002 till 2007 been quite stable.

Figure 14 Annual changes in selected sub-indices



See table 239.

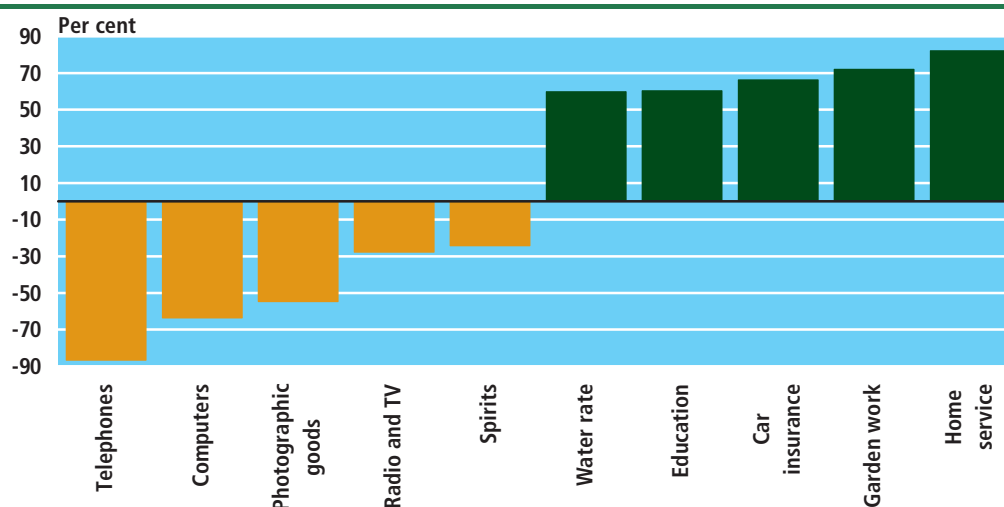
Greatest changes in consumer prices since 2000

Figure 15 shows the commodity and service groups that account for the greatest falls or increases in prices from January 2000 to January 2008. During the period, there was a fall of 87 per cent for telephones. Especially, mobile phones have been instrumental in reducing prices. There is also a sharp fall in computers (-64 per cent) and photographic equipment (-55 per cent). During the period, radio and TV accounts for a fall of 28 per cent while there was a fall in prices for spirits of 24 per cent, mainly due to a reduction in duties in October 2003. During the period, water rates increased by 60 per cent, and education also increased by 60 per cent, due to, among other things, a reduction in subsidies allocated to evening schools. Car insurance has increased by 66 per cent since 2000. Garden work, etc. has increased by 72 per cent and home service (e.g. cleaning activities and window cleaning) has increased by 82 per cent. The increase for the last two service groups is mainly due to the abolition of subsidies allocated to home service.

Generally speaking, goods with a highly technological content account for the highest falls in prices since 2000, while services account for the highest increases.

Figure 15

Percentage change in consumer prices. Jan. 2000 – Jan. 2008



International comparison of price trends

Until the middle of 2001, inflation in the EU and the United States ranged around 2 per cent and 4 per cent. From 2001 onwards, inflation has ranged at a lower level, between 1 per cent and 3 per cent. Since the beginning of 2004 and until the middle of 2006, inflation has been somewhat higher in the United States, compared to the EU, while Denmark has, on average, accounted for a considerably lower rate of inflation than in the EU. In the second half of 2007, the inflation in both the United States, the EU, Denmark and Japan rose considerably. This increase in inflation is mainly due to globally rising food and energy prices.

Figure 16 Inflation in EU, Denmark, United States and Japan

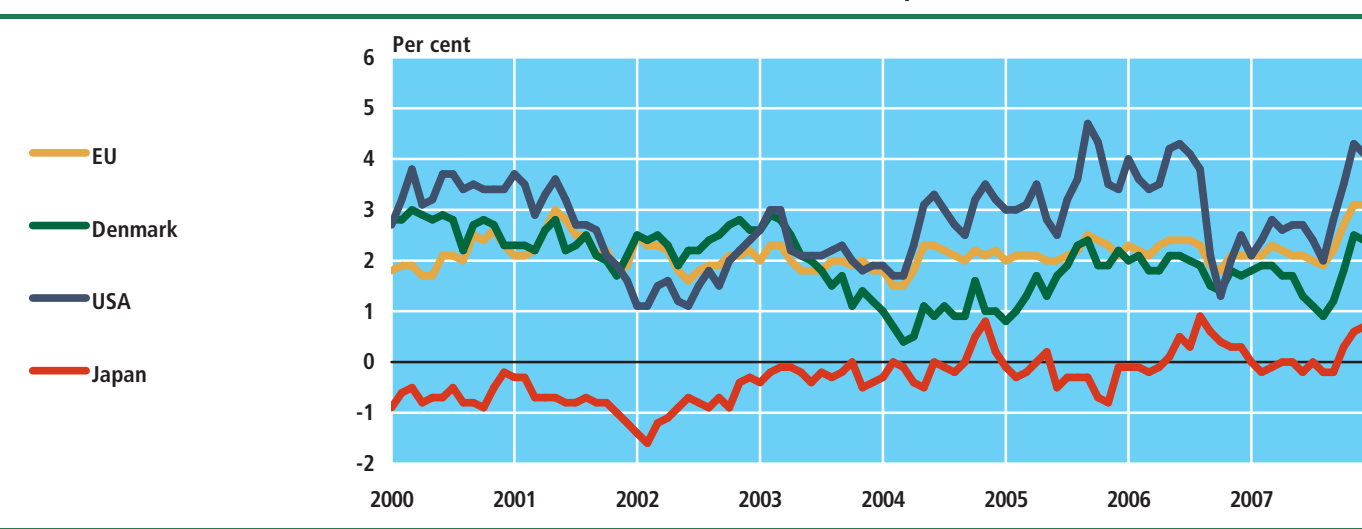


Table 217**Total family income before tax. 2006**

	Number of families	Lower quartile	Median	Upper quartile	Average
	thousands	DKK thousands			
Families, total	2 723.8	193.2	324.6	559.5	421.0
Without children	1 974.3	168.1	259.5	420.9	341.5
With 1 child	303.0	337.7	523.3	700.2	568.0
With 2 children	322.6	461.0	616.3	787.1	671.7
With 3 or more children	123.8	435.5	608.2	788.5	676.1
Couples, total	1 321.1	381.0	549.7	720.6	609.5
Without children	729.2	309.3	457.4	627.4	528.5
With 1 child	211.5	485.4	612.4	773.4	674.1
With 2 children	271.8	535.1	657.9	826.2	731.8
With 3 or more children	108.6	500.1	642.5	819.2	721.4
Single persons, total	1 402.7	153.1	204.8	298.4	243.4
Without children	1 245.1	148.9	191.2	282.1	231.9
With 1 child	91.5	219.3	292.6	381.5	322.7
With 2 or more children	66.0	255.3	317.8	399.0	350.4

For further information visit www.statbank.dk/06

Table 218**Number of families by family type and level of family income. 2006**

	Families total			Singles				Couples				
	Total	Without children	With children	Total	Without children	With 1 child	With 2 or more children	Total	Without children	With 1 child	With 2 children	With 3 or more children
	thousands											
Number of families	2 723.8	1 974.3	749.4	1 402.7	1 245.1	91.5	66.0	1 321.1	729.2	211.5	271.8	108.6
Income before tax												
Under 50 000 DKK	55.5	52.3	3.2	51.1	49.9	0.8	0.3	4.4	2.4	0.7	0.8	0.5
50 000 - 99 999 DKK	80.9	78.4	2.5	77.8	76.2	1.1	0.4	3.1	2.1	0.4	0.4	0.2
100 000 - 149 999 DKK	204.9	199.5	5.4	197.0	193.3	2.9	0.8	7.8	6.2	0.8	0.6	0.3
150 000 - 199 999 DKK	376.2	357.7	18.5	354.0	339.3	11.5	3.2	22.3	18.4	1.8	1.3	0.7
200 000 - 249 999 DKK	290.0	257.2	32.8	207.0	180.7	15.8	10.5	83.0	76.5	3.0	2.2	1.4
250 000 - 299 999 DKK	245.9	205.7	40.2	169.9	141.0	15.8	13.2	75.9	64.7	5.3	3.8	2.2
300 000 - 349 999 DKK	208.7	165.0	43.7	126.5	100.4	13.9	12.2	82.2	64.6	7.1	6.1	4.4
350 000 - 399 999 DKK	163.7	122.5	41.2	79.9	60.9	9.9	9.1	83.8	61.6	9.4	7.8	5.1
400 000 - 449 999 DKK	136.7	95.0	41.7	47.6	35.5	6.4	5.6	89.1	59.4	12.8	11.3	5.5
450 000 - 499 999 DKK	128.1	78.9	49.2	28.7	21.0	4.1	3.6	99.4	57.9	17.1	17.3	7.0
500 000 - 599 999 DKK	251.2	129.7	121.4	30.0	21.5	4.7	3.7	221.2	108.3	42.3	52.1	18.5
600 000 - 699 999 DKK	201.1	87.6	113.5	13.3	9.7	2.0	1.6	187.7	77.8	37.4	53.2	19.3
700 000 - 799 999 DKK	134.7	52.7	82.0	6.7	5.1	0.9	0.7	127.9	47.6	26.8	39.3	14.3
800 000 - 899 999 DKK	83.5	30.4	53.1	3.7	2.8	0.5	0.4	79.9	27.6	16.9	25.8	9.5
900 000 - 999 999 DKK	50.8	17.8	33.0	2.3	1.8	0.3	0.2	48.5	16.0	10.1	16.3	6.1
1 000 000 - 1 999 999 DKK	97.9	36.6	61.3	5.4	4.5	0.5	0.4	92.5	32.1	17.8	30.4	12.2
2 000 000 - 2 999 999 DKK	8.3	4.0	4.3	0.8	0.7	0.0	0.0	7.5	3.3	1.2	2.0	1.0
3 mio DKK +	5.9	3.4	2.5	0.9	0.8	0.0	0.0	5.0	2.6	0.7	1.1	0.6

Table 219

Total family income by type of dwelling. 2006

	Type of dwelling					Type of ownership		
	Detached	Terraced or semi- detached	Apartment houses	Student hostels	Other dwellings ¹	Total	Own dwelling	Rented ²
DKK thousands								
Family income before tax								
Families, total	537.6	378.8	309.3	146.4	323.0	421.0	572.4	282.6
Without children	434.6	313.2	276.1	141.6	269.8	341.5	478.2	245.1
With 1 child	665.3	518.8	433.7	273.6	545.5	568.0	687.3	410.1
With 2 children	731.2	609.5	496.2	320.2	724.6	671.7	748.8	484.0
With 3 or more children	750.1	604.1	463.9	379.4	665.7	676.1	772.3	476.5
Couples, total	658.9	566.0	496.3	284.2	608.0	609.5	669.2	469.1
Without children	570.7	483.7	456.7	277.4	534.5	528.5	585.3	414.2
With 1 child	723.6	658.0	558.9	322.5	660.6	674.1	734.1	537.5
With 2 children	762.1	710.9	589.4	354.0	808.4	731.8	771.7	586.8
With 3 or more children	775.0	681.2	516.0	401.3	715.3	721.4	788.5	536.9
Singles, total	277.5	245.5	231.9	114.3	201.1	243.4	332.3	211.1
Without children	262.8	228.5	224.0	113.4	194.6	231.9	319.6	200.5
With 1 child	372.8	330.4	291.8	181.3	315.5	322.7	418.8	285.3
With 2 or more children	387.5	354.9	317.3	209.3	344.5	350.4	433.8	316.0
Disposable family income								
Families, total	353.0	256.3	208.3	104.8	218.8	279.7	375.2	192.4
Without children	290.7	215.4	185.8	101.3	185.3	230.0	319.0	167.2
With 1 child	428.3	340.9	288.4	196.6	357.3	369.7	441.8	274.3
With 2 children	468.6	399.9	334.1	236.7	469.9	434.7	479.0	327.0
With 3 or more children	488.9	409.5	332.4	275.0	445.6	448.5	501.5	338.7
Couples, total	430.5	374.6	328.5	199.0	402.7	399.9	436.9	312.8
Without children	381.3	327.5	303.1	193.7	360.3	353.3	390.4	278.6
With 1 child	464.3	424.2	362.7	227.1	428.2	433.9	470.8	350.0
With 2 children	486.3	456.7	386.2	257.8	518.1	468.9	492.2	384.2
With 3 or more children	502.9	450.7	360.8	288.6	474.7	473.5	510.7	371.2
Singles, total	186.9	172.1	158.6	82.9	140.2	166.5	222.1	146.3
Without children	176.3	159.6	152.0	82.1	135.5	157.7	213.4	137.8
With 1 child	247.5	228.3	204.1	139.1	215.4	221.3	275.8	200.1
With 2 or more children	274.2	260.9	238.4	167.7	252.7	256.0	299.5	238.0

¹ Includes unknown types of dwelling. ² Dwellings which are part of a housing association are included as rented.

For further information visit www.statbank.dk/06

Table 220

Total family income by age of children. 2006

	Number of families	Age of youngest child						Total
		0-2 years	3-6 years	7-12 years	13-14 years	15-17 years	18-24 years	
	thousands	DKK thousands						
Family income before tax								
Families, total	749.4	570.5	607.2	644.0	658.9	670.1	710.5	630.5
With 1 child	303.0	522.6	489.2	509.8	543.9	591.2	693.9	568.0
With 2 children	322.6	603.0	642.7	678.5	712.9	782.8	831.2	671.7
With 3 or more children	123.8	603.7	659.1	718.5	809.5	839.2	921.4	676.1
Couples, total	591.9	606.9	686.4	744.7	769.1	787.2	818.0	709.3
With 1 child	211.5	566.8	611.6	670.5	694.0	725.3	804.9	674.1
With 2 children	271.8	632.4	704.2	757.2	789.5	855.9	902.6	731.8
With 3 or more children	108.6	634.4	709.5	773.8	864.5	898.8	960.8	721.4
Singles, total	157.5	238.7	292.2	330.2	350.2	369.7	429.1	334.3
With 1 child	91.5	214.4	265.4	301.8	320.2	343.3	418.0	322.7
With 2 or more children	66.0	264.6	314.5	353.9	390.9	448.7	549.4	350.4
Disposable family income								
Families, total	749.4	372.1	395.3	417.9	429.4	438.2	464.2	410.7
With 1 child	303.0	338.3	319.7	331.1	353.4	386.0	452.7	369.7
With 2 children	322.6	391.7	413.7	436.9	463.8	511.5	546.7	434.7
With 3 or more children	123.8	402.6	437.1	474.8	536.5	561.3	619.5	448.5
Couples, total	591.9	393.2	440.7	476.8	495.5	509.6	532.2	457.2
With 1 child	211.5	364.5	391.5	426.4	443.8	467.6	523.0	433.9
With 2 children	271.8	408.4	448.1	481.4	508.0	555.1	590.5	468.9
With 3 or more children	108.6	419.2	464.4	505.8	568.0	597.4	652.9	473.5
Singles, total	157.5	180.2	214.6	234.6	244.6	254.8	286.1	235.8
With 1 child	91.5	155.8	188.3	207.8	218.5	235.3	278.1	221.3
With 2 or more children	66.0	206.1	236.4	257.0	280.0	313.2	373.0	256.0

For further information visit www.statbank.dk/06

Table 221

Gross family income by family type. 2006

	Number of families	1st quartile group	2nd quartile group	3rd quartile group	4th quartile group	Maximum equalization percentage
	thousands	per cent				
Family income before tax						
Families, total	2 723.8	7.8	15.1	25.7	51.3	28.5
Without children	1 974.3	8.6	15.4	24.1	51.9	27.9
With 1 child	303.0	10.4	19.1	26.7	43.9	20.8
With 2 children	322.6	11.9	20.3	25.8	42.0	18.3
With 3 or more children	123.8	11.4	19.5	25.5	43.6	19.7
Couples	1 321.1	11.1	19.3	25.8	43.8	20.1
Without children	729.2	11.0	18.1	25.5	45.4	21.7
With 1 child	211.5	13.5	20.4	25.4	40.7	16.7
With 2 children	271.8	14.1	20.4	25.0	40.4	16.2
With 3 or more children	108.6	12.6	19.9	25.0	42.5	18.2
Singles, total	1 402.7	10.5	18.0	25.5	46.0	22.5
Without children	1 245.1	10.5	18.1	25.1	46.3	22.6
With 1 child	91.5	13.1	19.9	25.8	41.2	17.5
With 2 or more children	66.0	14.7	20.4	25.3	39.6	15.4
Disposable family income						
Families, total	2 723.8	8.7	16.2	26.2	48.9	26.2
Without children	1 974.3	9.4	16.7	24.4	49.5	25.6
With 1 child	303.0	11.6	19.8	26.9	41.7	18.8
With 2 children	322.6	13.3	21.2	26.0	39.5	15.7
With 3 or more children	123.8	13.1	20.6	25.7	40.7	16.7
Couples	1 321.1	12.5	20.2	26.0	41.3	17.7
Without children	729.2	12.4	19.2	25.6	42.8	19.0
With 1 child	211.5	14.5	21.1	25.6	38.7	14.7
With 2 children	271.8	15.3	21.3	25.3	38.1	13.8
With 3 or more children	108.6	14.0	20.9	25.2	39.9	15.7
Singles, total	1 402.7	11.3	19.7	26.0	43.1	19.6
Without children	1 245.1	11.4	20.0	25.8	42.9	19.2
With 1 child	91.5	14.8	21.1	25.8	38.2	14.3
With 2 or more children	66.0	16.1	21.7	25.6	36.6	12.5

For further information visit www.statbank.dk/06

Table 222

Disposable income by sex and socio-economic group. 2006

	Number of persons	Lower quartile	Median	Upper quartile	Average
	thousands	DKK thousands			
Men and women					
Self-employed, total¹	193.1	102.0	176.8	294.0	286.8
Self-employed, with employees	47.9	127.1	243.6	454.5	365.4
Self-employed, without employees	136.4	96.2	166.0	264.7	268.2
Assisting spouses	8.9	112.1	145.0	179.4	147.5
Employees, total	2 416.9	156.0	195.7	239.5	208.1
Top managers, total	69.9	236.6	290.3	378.8	357.7
Employees, highest level, total	320.2	211.5	249.1	300.0	266.3
Employees, medium level, total	454.1	182.1	214.3	253.9	225.4
Employees, basic level, total	947.2	147.7	181.5	214.1	181.6
Other employees	185.0	133.6	165.4	197.3	166.0
Employees, not further specified	440.5	133.2	176.7	227.2	199.1
Unemployed	82.0	111.7	130.7	156.3	138.1
Temporarily outside the labour force	47.1	110.8	126.5	146.2	130.5
Not economically active					
Pensioners and others	1 100.8	101.7	125.5	155.8	138.7
Recipients of cash benefits	99.4	83.5	106.4	136.3	112.8
Other persons not economically active ²	447.8	9.7	26.2	50.1	40.3
Men					
Self-employed, total¹	135.8	102.8	187.2	322.5	313.7
Self-employed with employees	37.5	124.5	248.1	467.5	378.5
Self-employed without employees	97.4	98.5	172.7	280.4	290.3
Assisting spouses	0.8	86.2	125.4	153.0	125.2
Employees, total	1 251.2	164.7	206.4	255.8	224.7
Top managers	50.9	248.4	308.2	406.2	386.0
Employees, highest level, total	168.3	219.9	262.6	320.0	284.6
Employees, medium level, total	173.5	199.7	238.6	287.9	254.4
Employees, basic level, total	487.5	156.8	191.6	224.3	191.0
Other employees	111.1	145.2	177.5	209.3	177.1
Employees, not further specified	259.9	141.8	188.4	242.7	217.9
Unemployed	36.2	104.4	125.8	151.9	135.8
Temporarily outside the labour force	13.9	104.1	120.2	134.1	124.8
Not economically active					
Pensioners and others	465.8	108.3	131.8	169.2	151.8
Recipients of cash benefits	40.2	78.5	90.8	106.3	95.0
Other persons not economically active ²	210.1	8.6	24.1	46.7	40.2
Women					
Self-employed, total¹	57.4	100.5	159.2	240.5	222.9
Self-employed with employees	10.4	136.3	230.5	409.2	318.0
Self-employed without employees	38.9	90.9	151.9	231.5	212.8
Assisting spouses	8.1	115.1	146.9	180.9	149.7
Employees, total	1 165.7	149.1	185.5	224.1	190.4
Top managers	19.0	218.7	253.7	308.3	281.6
Employees, highest level, total	152.0	203.8	237.6	278.0	246.0
Employees, medium level, total	280.6	175.2	203.3	234.5	207.5
Employees, basic level, total	459.6	141.3	171.6	202.1	171.7
Other employees	73.9	121.3	150.5	175.9	149.3
Employees, not further specified	180.6	123.0	162.0	206.2	172.0
Unemployed	45.8	116.8	134.5	158.8	139.9
Temporarily outside the labour force	33.2	113.8	130.2	149.0	132.9
Not economically active					
Pensioners and others	635.0	94.9	121.7	147.1	129.2
Recipients of cash benefits	59.2	95.2	123.7	150.0	124.9
Other persons not economically active ²	237.6	10.6	28.1	53.6	40.4

¹ Includes assisting spouses. ² Includes unknown.

For further information visit www.statbank.dk/06

Table 223

Personal income by type of income. 2006

	Primary income			Transfer income			Property income, net	Disposable income	
	Wages and salaries, etc.	Entrepre- neurial income etc.	Total	Unemploy- ment bene- fits etc.	Pensions etc.	Social benefits			
	Total ³								
DKK thousands									
Men and women									
Self-employed, total ¹	27.7	386.8	414.4	1.9	16.5	6.4	28.9	-7.9	286.8
Self-employed with employees	14.3	624.6	638.9	0.3	7.2	5.6	15.7	-86.8	365.4
Self-employed without employees	33.4	319.1	352.5	2.5	19.8	6.7	33.6	18.6	268.2
Assisting spouses	11.6	143.1	154.8	0.6	14.6	5.4	28.6	11.5	147.5
Employees, total	297.0	2.1	299.1	2.6	4.9	3.8	18.2	9.0	208.1
Top managers	566.0	6.1	572.1	0.6	4.6	0.7	8.6	61.4	357.7
Employees, highest level	402.3	4.6	406.9	2.0	3.7	2.4	14.9	15.0	266.3
Employees, medium level	332.4	1.6	334.0	1.8	2.3	3.2	15.7	5.9	225.4
Employees, basic level	256.9	1.0	258.0	2.7	1.8	3.9	15.5	0.9	181.6
Other employees	231.6	0.8	232.4	4.2	2.7	5.1	18.3	-0.6	166.0
Employees, not further specified	254.6	3.3	257.9	3.0	15.9	5.1	30.7	20.9	199.1
Unemployed	45.1	4.4	49.5	90.0	4.5	28.9	133.1	4.1	138.1
Temporarily outside the labour force	10.6	0.2	10.9	38.2	5.5	99.7	159.4	-1.6	130.5
Not economically active									
Pensioners and others	2.2	0.5	2.7	0.2	149.6	1.2	159.1	22.7	138.7
Recipients of cash benefits	6.1	0.1	6.2	0.3	3.0	120.1	142.5	-2.7	112.8
Others persons not economically active ²	12.6	0.9	13.5	0.2	5.7	4.4	23.7	5.2	40.3

¹ Includes assisting spouses. ² Includes unknown. ³ Includes other transfer income.

For further information visit www.statbank.dk/06

Table 224

Disposable income by sex and level of income. 2006

	Men	Women	Total	Men	Women	Total
	thousands			per cent		
Persons, total	2 153.1	2 233.9	4 387.1	49	51	100
Disposable income						
Under 50 000 DKK	193.1	187.3	380.3	51	49	100
50 000 - 99 999 DKK	247.9	352.9	600.8	41	59	100
100 000 - 149 999 DKK	429.6	602.7	1 032.3	42	58	100
150 000 - 199 999 DKK	464.2	554.0	1 018.2	46	54	100
200 000 - 249 999 DKK	391.4	336.8	728.3	54	46	100
250 000 - 299 999 DKK	197.5	121.0	318.5	62	38	100
300 000 - 349 999 DKK	93.2	41.2	134.4	69	31	100
350 000 - 399 999 DKK	46.5	16.3	62.8	74	26	100
400 000 - 449 999 DKK	25.7	7.7	33.4	77	23	100
450 000 - 499 999 DKK	15.5	4.1	19.6	79	21	100
500 000 - 599 999 DKK	17.1	4.0	21.1	81	19	100
600 000 - 699 999 DKK	8.9	1.9	10.8	82	18	100
700 000 - 799 999 DKK	5.3	1.1	6.4	83	17	100
800 000 - 899 999 DKK	3.5	0.7	4.2	84	16	100
900 000 - 999 999 DKK	2.4	0.4	2.8	86	14	100
1 000 000 - 1 999 999 DKK	7.9	1.3	9.2	86	14	100
2 000 000 - 2 999 999 DKK	1.7	0.3	2.0	86	14	100
3 mio DKK +	1.8	0.3	2.2	85	15	100

For further information visit www.statbank.dk/06

Table 225

Disposable income by sex and socio-economic group. 2006

	Number of persons	1st quartile group	2nd quartile group	3rd quartile group	4th quartile group	Maximum equalization percentage
	thousands	per cent				
Men and women	4 387.1	8.3	19.2	26.9	45.6	22.8
Self-employed, total¹	193.1	-0.4	12.1	19.8	68.5	43.5
Self-employed with employees	47.9	-3.9	12.7	22.6	68.6	44.4
Self-employed without employees	136.4	0.9	12.2	19.5	67.4	42.4
Assisting spouses	8.9	13.1	22.1	27.2	37.6	14.8
Employees, total	2 416.9	13.7	21.2	25.9	39.1	15.3
Top managers	69.9	13.4	18.4	23.0	45.3	20.4
Employees, highest level	320.2	15.7	21.6	25.5	37.1	13.0
Employees, medium level	454.1	16.4	22.0	25.8	35.9	11.8
Employees, basic level	947.2	15.0	22.8	27.1	35.0	12.2
Other employees	185.0	14.6	22.7	27.2	35.5	12.7
Employees, not further specified	440.5	11.4	19.5	25.1	44.0	19.8
Unemployed	82.0	15.4	22.1	25.7	36.8	12.8
Temporarily not in the labour force	47.1	17.1	22.9	25.9	34.1	10.1
Not in the labour force						
Pensioners and others	1 100.8	14.4	20.6	24.9	40.1	15.7
Recipient of cash benefit	99.4	15.6	20.9	26.8	36.7	13.6
Others not in the labour force ²	447.8	0.2	10.7	23.2	65.9	42.1
Men	2 153.1	7.4	18.6	26.3	47.8	24.4
Self-employed, total¹	135.8	-1.3	11.5	19.4	70.4	45.4
Self-employed with employees	37.5	-4.7	12.3	22.4	69.9	45.7
Self-employed without employees	97.4	0.3	11.7	18.9	69.1	44.1
Assisting spouses	0.8	11.3	21.5	27.2	40.0	17.2
Employees, total	1 251.2	13.1	20.7	25.4	40.7	16.6
Top managers	50.9	12.9	18.0	22.7	46.5	21.6
Employees, highest level	168.3	15.3	21.2	25.4	38.1	14.0
Employees, medium level	173.5	15.6	21.6	25.7	37.2	13.2
Employees, basic level	487.5	14.8	23.0	27.1	35.1	12.3
Other employees	111.1	14.8	22.9	27.2	35.1	12.3
Employees, not further specified	259.9	10.8	19.0	24.4	45.7	21.2
Unemployed	36.2	14.3	21.4	25.2	39.0	14.7
Temporarily not in the labour force	13.9	16.0	22.7	25.2	36.0	11.5
Not in the labour force						
Pensioners and others	465.8	14.6	19.7	24.3	41.4	16.8
Recipient of cash benefit	40.2	17.3	22.1	25.8	34.8	10.8
Others not in the labour force ²	210.1	-0.5	9.9	21.4	69.2	44.7
Women	2 233.9	9.4	20.4	27.8	42.3	20.3
Self-employed, total¹	57.4	2.6	14.7	21.9	60.9	36.0
Self-employed with employees	10.4	-0.7	14.4	23.9	62.4	38.6
Self-employed without employees	38.9	2.6	14.3	22.0	61.0	36.2
Assisting spouses	8.1	13.4	22.2	27.2	37.3	14.5
Employees, total	1 165.7	14.7	22.0	26.8	36.5	13.3
Top managers	19.0	16.1	20.9	24.7	38.2	13.7
Employees, highest level	152.0	16.4	22.5	26.0	35.1	11.2
Employees, medium level	280.6	17.3	22.9	26.2	33.6	9.9
Employees, basic level	459.6	15.5	22.9	27.1	34.5	11.6
Other employees	73.9	15.0	23.0	27.2	34.7	11.9
Employees not further specified	180.6	12.6	20.9	26.5	40.0	16.7
Unemployed	45.8	16.5	22.5	26.0	35.0	11.1
Temporarily not in the labour force	33.2	17.7	23.1	26.2	33.1	9.3
Not in the labour force						
Pensioners and others	635.0	14.5	21.3	25.7	38.5	14.5
Recipient of cash benefit	59.2	15.2	22.2	27.3	35.3	12.6
Others not in the labour force ²	237.6	0.9	11.5	24.8	62.8	39.7

¹ Includes assisting spouses. ² Includes unknown.For further information visit www.statbank.dk/06

Table 226

Disposable income by sex and age. 2006

	Number of persons	Lower quartile	Median	Upper quartile	Average
	thousands	DKK thousands			
Men and women					
Total	4 387.1	106.8	158.8	214.5	172.8
15-19 years	319.6	10.7	23.6	45.3	32.1
20-24 years	283.4	67.7	95.2	130.9	101.7
25-29 years	313.9	100.2	147.8	184.8	144.6
30-34 years	371.4	144.0	181.5	218.2	183.6
35-39 years	386.2	156.9	196.1	238.5	205.5
40-44 years	421.2	159.2	200.9	246.3	216.5
45-49 years	372.4	155.4	199.1	247.0	218.9
50-54 years	360.5	150.6	196.3	246.0	216.5
55-59 years	364.6	143.7	191.8	246.2	217.4
60-64 years	361.3	119.5	160.0	224.5	197.1
65-69 years	254.3	95.8	127.9	177.9	161.2
70-74 years	198.2	90.8	120.7	159.0	146.1
74 years +	380.2	101.3	124.2	153.1	144.0
Men					
Total	2 153.1	111.9	173.3	232.7	191.9
15-19 years	164.3	11.0	24.2	47.8	33.8
20-24 years	144.6	68.7	100.9	145.0	108.8
25-29 years	157.1	103.2	158.6	197.3	153.1
30-34 years	185.8	147.2	191.1	230.9	193.3
35-39 years	195.6	159.7	204.2	252.8	217.6
40-44 years	213.8	162.2	208.8	262.9	231.9
45-49 years	188.1	162.9	210.7	266.9	239.1
50-54 years	181.1	162.5	212.1	268.9	241.1
55-59 years	182.2	161.8	214.2	274.9	251.8
60-64 years	180.1	134.2	186.5	257.9	234.9
65-69 years	123.2	110.8	145.0	211.3	192.5
70-74 years	92.2	103.7	130.4	186.0	171.5
74 years +	145.0	103.1	126.3	170.8	162.2
Women					
Total	2 233.9	102.1	147.9	197.7	154.3
15-19 years	155.3	10.4	23.0	43.3	30.2
20-24 years	138.8	67.0	90.8	119.5	94.3
25-29 years	156.8	97.8	140.4	172.6	136.1
30-34 years	185.5	142.1	174.0	206.1	173.9
35-39 years	190.6	155.1	189.2	226.3	193.0
40-44 years	207.3	157.1	194.0	233.3	200.6
45-49 years	184.4	150.2	189.0	230.1	198.2
50-54 years	179.4	143.3	183.0	225.7	191.6
55-59 years	182.4	134.1	172.4	218.9	183.1
60-64 years	181.2	112.1	140.2	190.8	159.5
65-69 years	131.1	83.7	115.0	151.0	131.7
70-74 years	106.1	77.3	113.3	140.5	124.0
74 years +	235.2	99.1	123.4	145.3	132.7

For further information visit www.statbank.dk/06

Table 227 (page 1 of 2) **Average income in municipalities. 2006**

Municipality-code		Men			Women			Men and women		
		Primary income	Transfer income	Disposable income	Primary income	Transfer income	Disposable income	Primary income	Transfer income	Disposable income
DKK thousands										
	All Denmark	230.1	52.5	191.9	144.0	69.4	154.3	186.3	61.1	172.8
	Copenhagen city	218.3	49.7	180.6	154.1	65.9	156.4	185.2	58.1	168.1
101	Copenhagen	207.7	48.1	171.0	150.0	64.5	151.3	178.2	56.5	160.9
147	Frederiksberg	265.5	55.6	218.3	169.1	72.6	174.7	213.5	64.8	194.8
155	Dragør	289.6	61.5	248.0	184.4	68.0	188.8	234.9	64.9	217.2
185	Tårnby	227.3	53.7	198.7	159.0	66.8	165.9	191.9	60.5	181.7
	Copenhagen surburban	256.9	56.1	219.0	163.1	71.9	174.4	208.0	64.3	195.7
165	Albertslund	201.2	52.7	171.8	146.2	67.1	150.8	173.5	60.0	161.2
151	Ballerup	224.4	60.4	192.8	153.7	72.9	161.2	187.8	66.9	176.4
153	Brøndby	196.3	59.7	176.6	133.5	75.5	150.4	163.8	67.9	163.0
157	Gentofte	433.8	63.6	375.1	211.3	75.3	233.4	313.4	70.0	298.4
159	Gladsaxe	238.3	52.5	200.5	160.8	71.4	169.5	197.9	62.4	184.4
161	Glostrup	235.2	52.9	193.9	154.1	71.0	160.9	192.6	62.4	176.6
163	Herlev	217.5	57.0	189.1	147.8	73.0	160.4	181.0	65.4	174.1
167	Hvidovre	217.4	52.4	183.5	151.1	69.3	157.4	183.1	61.2	170.0
169	Høje-Taastrup	234.1	49.3	192.5	157.8	64.9	160.0	195.4	57.2	176.1
183	Ishøj	209.7	46.9	172.1	146.0	65.1	150.0	177.5	56.1	161.0
173	Lyngby-Taarbæk	294.2	62.5	251.7	177.3	78.4	199.7	232.1	71.0	224.1
175	Rødovre	214.2	55.3	183.5	146.6	74.6	159.6	178.9	65.4	171.0
187	Vallensbæk	273.8	53.2	228.4	189.4	59.7	181.6	231.4	56.5	204.8
	North Zealand	289.9	57.8	243.9	176.4	68.3	182.5	231.4	63.2	212.2
201	Allerød	328.3	51.9	257.1	205.6	59.5	192.7	265.3	55.8	224.1
240	Egedal	298.7	43.1	228.3	199.6	54.7	180.9	248.7	49.0	204.4
210	Fredensborg	290.1	54.6	240.1	172.3	67.5	179.8	228.9	61.3	208.8
250	Frederikssund	251.2	50.5	206.0	163.7	65.6	165.7	206.8	58.2	185.5
190	Furesø	302.7	62.6	249.6	197.0	69.8	192.5	247.7	66.3	219.9
270	Gribskov	240.3	54.3	210.7	161.5	65.9	172.4	200.5	60.2	191.3
260	Halsnæs	209.8	56.8	186.3	147.3	71.0	157.9	178.3	64.0	172.0
217	Helsingør	241.1	61.1	208.2	152.4	74.0	167.8	195.1	67.8	187.2
219	Hillerød	274.3	51.5	219.9	178.2	63.8	175.4	224.5	57.9	196.8
223	Hørsholm	425.1	74.1	349.0	188.7	77.2	210.9	298.1	75.8	274.8
230	Rudersdal	390.7	74.2	359.3	194.6	76.6	219.2	287.5	75.5	285.6
	Bornholm	173.8	65.0	163.3	111.5	79.0	137.9	142.0	72.1	150.3
	East Zealand	269.2	49.0	216.2	172.9	62.6	170.9	219.9	56.0	193.0
253	Greve	272.2	49.9	222.5	179.5	61.7	176.5	224.8	55.9	199.0
259	Køge	249.9	47.0	199.7	159.9	64.6	161.9	203.7	56.0	180.3
350	Lejre	279.1	45.5	219.3	180.4	57.8	171.0	229.4	51.7	195.0
265	Roskilde	268.0	52.0	217.2	171.6	64.5	171.9	218.3	58.5	193.8
269	Solrød	307.0	45.4	239.5	189.3	57.3	178.4	246.9	51.5	208.3
	West and South Zealand	209.8	55.9	179.1	134.0	72.2	147.7	171.3	64.2	163.2
320	Faxe	233.8	48.2	183.8	145.3	67.2	149.9	189.1	57.8	166.7
376	Guldborgsund	184.4	61.5	170.6	121.1	75.4	143.5	152.3	68.6	156.9
316	Holbæk	231.2	48.8	187.3	149.8	66.4	154.4	189.7	57.8	170.5
326	Kalundborg	217.0	55.0	183.7	135.6	72.2	148.3	176.0	63.7	165.9
360	Lolland	163.0	68.9	157.1	104.9	82.8	133.0	134.0	75.8	145.0
370	Næstved	222.8	51.6	183.4	140.7	69.3	149.7	180.8	60.6	166.2
306	Odsherred	184.2	66.2	174.5	121.9	78.7	146.0	152.9	72.5	160.2
329	Ringsted	240.7	46.0	190.6	152.4	65.2	154.6	195.9	55.7	172.3
330	Slagelse	205.3	57.2	178.0	129.2	73.9	145.8	166.5	65.7	161.6
340	Sorø	234.6	50.6	189.6	145.2	69.4	152.6	189.1	60.2	170.8
336	Stevns	238.0	49.8	194.2	149.9	65.0	155.3	193.8	57.4	174.7
390	Vordingborg	195.3	60.8	171.2	128.1	75.8	146.9	161.0	68.4	158.8

For further information visit www.statbank.dk/06

Table 227 (page 2 of 2) **Average income in municipalities. 2006**

Municipality-code		Men			Women			Men and women		
		Primary income	Transfer income	Disposable income	Primary income	Transfer income	Disposable income	Primary income	Transfer income	Disposable income
		DKK thousands								
	Funen	204.4	56.1	175.3	127.9	73.3	143.5	165.4	64.9	159.1
420	Assens	214.5	52.2	177.7	132.7	70.4	142.8	173.3	61.4	160.1
430	Faaborg-Midtfyn	205.0	54.7	172.8	130.0	72.1	143.5	167.1	63.5	158.0
440	Kerteminde	222.3	54.5	182.4	132.4	72.4	146.7	176.7	63.6	164.3
482	Langeland	162.0	69.2	156.3	101.9	81.8	133.5	131.6	75.6	144.8
410	Middelfart	229.4	53.9	188.2	142.0	70.4	150.8	185.1	62.3	169.2
480	Nordfyns	215.1	49.3	175.5	130.5	69.9	141.7	173.0	59.5	158.7
450	Nyborg	204.2	60.6	175.5	127.1	76.2	143.0	165.2	68.5	159.1
461	Odense	201.0	55.8	173.3	127.0	73.5	143.2	162.9	65.0	157.8
479	Svendborg	195.2	58.9	176.5	124.2	74.7	143.5	159.1	66.9	159.7
492	Ærø	163.9	69.0	166.1	96.6	83.2	135.5	130.1	76.1	150.7
	South Jutland	224.2	50.4	186.2	135.0	68.9	146.6	179.2	59.7	166.3
530	Billund	232.8	45.0	186.9	136.4	68.1	147.3	184.7	56.5	167.1
561	Esbjerg	220.6	53.0	187.0	132.8	70.6	145.6	176.3	61.9	166.1
563	Fanø	217.2	64.8	209.9	133.3	72.7	150.5	174.5	68.9	179.7
607	Fredericia	221.8	55.9	189.1	135.0	73.3	148.7	178.1	64.6	168.8
510	Haderslev	213.6	53.1	180.3	128.9	72.3	143.5	170.9	62.8	161.7
621	Kolding	239.5	46.6	193.4	142.6	66.1	150.4	190.4	56.5	171.6
540	Sønderborg	205.8	54.1	177.5	130.8	69.5	143.0	167.9	61.9	160.1
550	Tønder	208.2	51.5	173.7	120.7	71.4	139.4	164.1	61.5	156.5
573	Varde	230.7	45.4	184.1	136.9	65.4	146.0	184.2	55.3	165.3
575	Vejen	229.4	44.8	179.2	130.8	67.9	142.3	180.6	56.2	160.9
630	Vejle	241.1	48.5	197.9	147.5	66.8	154.9	193.5	57.8	176.1
580	Aabenraa	214.3	50.9	182.6	128.1	68.0	142.2	170.6	59.6	162.1
	East Jutland	231.1	49.9	190.5	140.5	67.9	151.2	185.1	59.0	170.5
710	Favrskov	251.9	41.4	193.3	155.4	62.0	155.9	203.7	51.7	174.6
766	Hedensted	250.1	40.4	198.7	146.9	63.1	151.6	198.8	51.7	175.3
615	Horsens	226.5	47.5	186.2	137.7	67.7	148.0	181.9	57.7	167.0
707	Norddjurs	202.0	55.3	172.1	120.3	73.1	139.2	161.2	64.2	155.7
727	Odder	237.1	50.0	195.9	145.1	66.3	156.0	190.2	58.3	175.6
730	Randers	215.6	53.1	178.3	127.7	73.0	143.2	171.0	63.2	160.5
741	Samsø	171.9	68.0	163.8	107.0	84.5	137.5	138.3	76.5	150.2
746	Skanderborg	271.1	43.1	212.5	165.3	60.3	162.7	217.7	51.8	187.3
706	Syddjurs	222.6	54.1	188.9	134.8	70.2	151.8	178.4	62.2	170.2
751	Århus	220.3	52.8	188.7	140.0	68.4	152.2	179.0	60.9	169.9
	West Jutland	232.2	46.7	186.2	135.9	67.3	145.9	184.1	57.0	166.1
657	Herning	233.7	44.9	188.2	136.3	66.6	147.6	184.8	55.8	167.8
661	Holstebro	236.7	46.5	189.0	136.9	66.2	146.1	186.2	56.4	167.3
756	Ikast-Brande	225.3	44.5	185.4	131.9	67.2	143.9	179.0	55.7	164.8
665	Lemvig	233.7	50.2	186.8	124.5	70.1	140.6	179.8	60.0	164.0
760	Ringkøbing-Skjern	243.5	44.0	194.9	137.0	65.2	146.4	190.9	54.5	171.0
740	Silkeborg	263.8	46.5	204.4	145.0	66.3	154.0	203.6	56.6	178.9
779	Skive	219.5	50.1	176.2	129.1	70.0	141.5	174.8	59.9	159.0
671	Struer	221.0	50.9	181.6	131.7	69.9	142.7	176.6	60.4	162.2
791	Viborg	233.2	47.5	183.8	143.1	67.5	149.0	188.0	57.6	166.3
	North Jutland	212.3	53.0	177.2	127.3	72.0	142.2	169.6	62.6	159.6
810	Brønderslev	209.9	52.2	174.6	125.1	72.9	141.7	167.5	62.6	158.2
813	Frederikshavn	208.6	57.5	182.9	118.7	76.5	141.0	163.3	67.1	161.8
860	Hjørring	207.3	54.8	175.6	123.0	74.2	141.5	164.7	64.6	158.4
849	Jammerbugt	214.6	51.7	177.7	127.2	72.2	141.7	171.0	61.9	159.8
825	Læsø	195.6	65.5	177.6	98.3	83.2	131.5	146.9	74.4	154.5
846	Mariagerfjord	217.8	50.0	177.8	128.4	70.8	142.0	173.1	60.4	159.9
773	Morsø	202.5	54.3	169.8	115.1	73.6	135.6	158.9	63.9	152.7
840	Rebild	248.3	42.9	187.8	146.0	63.6	147.5	197.9	53.1	167.9
787	Thisted	218.8	49.6	177.1	126.6	69.2	140.2	172.6	59.4	158.6
820	Vesthimmerlands	212.6	50.2	171.0	124.9	72.0	139.4	168.9	61.1	155.3
851	Aalborg	208.7	54.4	176.6	131.4	71.4	144.2	169.7	63.0	160.2

Table 228

Income, consumption and taxation by household income. 2005

	Total household income					Total
	Under DKK 150 000	DKK 150 000- 299 999	DKK 300 000- 499 999	DKK 500 000- 799 999	DKK 800 000 +	
	DKK per household					
A. Earned income (B+C)	27 285	50 376	216 034	504 813	911 083	340 995
B. Wages and salaries, etc.	26 245	47 315	208 153	481 529	819 376	317 245
C. Entrepreneurial income, etc.	1 040	3 061	7 881	23 284	91 707	23 751
D. Property income	4 379	16 610	30 972	41 853	89 912	37 391
E. Private transfers	5 005	24 088	43 888	30 076	57 440	34 287
F. Transfers from the public sector	70 620	121 541	96 302	60 508	37 423	82 951
G. Other income and reconciliation	2 574	1 846	6 160	4 528	8 807	4 723
H. Gross income (A+D+E+F+G)	109 862	214 462	393 356	641 778	1 104 665	500 347
I. Capital transfers to the household	243	1 373	2 281	4 182	15 645	4 565
J. Total income (H+I)	110 105	215 834	395 636	645 960	1 120 310	504 912
K. Income taxes, etc.	24 097	52 683	112 992	198 943	385 646	155 604
L. Private interest payments, etc.	2 091	7 633	19 717	41 924	67 265	28 285
M. Disposable amount (J-K-L)	83 917	155 518	262 928	405 093	667 399	321 024
N. Payments from capital pensions	0	4 101	1 892	3 224	8 066	3 723
O. Tax on payments from capital pensions	0	1 640	756	1 289	3 218	1 488
P. Disposable amount (M+N-O)	83 917	157 978	264 063	407 028	672 247	323 259
Q. Fines	112	168	287	401	709	338
R. Gifts, charity	3 747	4 783	2 618	3 219	8 601	4 460
S. Membership fees	922	1 261	3 718	6 907	9 374	4 529
T. Net saving (U+V+X+Y)	-41 728	-14 865	13 928	54 248	191 079	40 955
U. Pension and ATP contributions (own and employer's)	2 123	3 970	21 049	51 436	113 540	37 609
V. Payments to private life insurance, etc.	45	207	878	2 406	4 679	1 630
X. Value of conversion, etc. of buildings	262	1 979	9 917	12 114	40 346	12 571
Y. Other saving, including residual	-44 157	-21 021	-17 917	-11 709	32 515	-10 856
Z. Consumption (P-Q-R-S-T)	120 864	166 631	243 512	342 253	462 485	272 977
Food	12 881	17 871	25 610	35 629	45 482	28 203
Beverages and tobacco	7 623	7 906	10 970	12 802	15 702	11 086
Clothing and footwear	5 951	6 738	10 176	16 087	25 173	12 822
Rent (housing)	33 179	46 496	57 998	66 604	81 359	58 852
Electricity and fuels	8 940	14 765	18 298	21 517	29 277	19 203
Furniture, furnishings, household services	4 840	9 050	13 090	20 334	32 041	16 242
Medical products, services of physicians	3 530	6 043	6 905	8 311	9 610	7 196
Purchase of vehicles	3 182	3 720	12 096	32 938	30 221	17 117
Other transport services and communications	13 372	16 155	28 037	38 462	58 590	31 203
Recreation, entertainment, travel	14 483	19 633	26 392	37 737	60 418	32 012
Other goods and services	12 884	18 254	33 941	51 833	74 610	39 042
Indirect transfers from the public sector, total	84 535	45 992	49 379	69 508	90 708	62 886
Child care	2 684	3 863	11 523	22 936	22 681	13 312
Education	33 716	13 120	24 121	35 950	58 389	30 350
Health	48 136	29 009	13 736	10 622	9 639	19 225
Taxes on production and imports, total	24 769	36 040	56 996	84 148	114 287	64 776
VAT	15 310	21 078	32 897	45 965	66 898	37 071
Excise duty	8 128	12 008	19 703	32 135	36 871	22 525
Real property tax	1	115	307	359	922	345
Stamp duties	1 329	2 839	4 089	5 689	9 596	4 834
	number					
Persons per household	1.1	1.3	2.0	2.8	3.2	2.1
Of whom adults	1.1	1.2	1.6	2.0	2.2	1.6
Households in the survey	190	592	618	634	429	2 463
Households in Denmark - thousands	193	709	590	608	422	2 521

For further information visit www.statbank.dk/fu5 and [fu6](http://www.statbank.dk/fu6)

Table 229

Income, consumption and taxation, by socio-economic status. 2005

	Socio-economic status of head of household								Total
	Self-employed	Employees - upper level	Employees - medium level	Employees - basic level	Unemployed	Receiving education	Pensioners, early retirement	Other not economically active	
	DKK per household								
A. Earned income (B+C)	558 520	742 890	550 843	437 222	125 221	56 552	9 162	83 560	340 995
B. Wages and salaries, etc.	168 826	721 394	545 632	431 958	120 377	52 568	11 327	80 921	317 245
C. Entrepreneurial income, etc.	389 694	21 496	5 212	5 263	4 843	3 984	-2 165	2 639	23 751
D. Property income	57 587	46 752	40 853	38 983	12 932	1 983	34 894	12 780	37 391
E. Private transfers	33 114	21 855	14 780	14 257	16 547	11 587	75 077	29 929	34 287
F. Transfers from the public sector	57 552	36 384	39 041	47 383	152 705	52 106	154 017	146 773	82 951
G. Other income and reconciliation	10 469	8 915	4 016	3 458	5 140	501	2 447	13 946	4 723
H. Gross income (A+D+E+F+G)	717 242	856 797	649 532	541 304	312 545	122 729	275 597	286 988	500 347
I. Capital transfers to the household	1 417	5 161	11 615	4 116	6 372	2 975	2 808	2 449	4 565
J. Total income (H+I)	718 659	861 957	661 147	545 420	318 917	125 705	278 405	289 438	504 912
K. Income taxes, etc.	214 713	301 499	216 317	167 448	81 049	23 482	72 771	69 231	155 604
L. Private interest payments, etc.	38 311	54 254	42 789	33 436	18 755	2 868	8 755	10 639	28 285
M. Disposable amount (J-K-L)	465 635	506 204	402 041	344 535	219 112	99 354	196 879	209 568	321 024
N. Payments from capital pensions	1 796	2 196	12	753	883	0	8 750	12 392	3 723
O. Tax on payments from capital pensions	718	878	5	301	353	0	3 494	4 957	1 488
P. Disposable amount (M+N-O)	466 713	507 522	402 048	344 987	219 643	99 354	202 134	217 003	323 259
Q. Fines	524	532	563	385	152	288	116	196	338
R. Gifts, charity	4 225	7 221	1 096	3 276	742	136	7 327	521	4 460
S. Membership fees	4 487	8 366	6 216	5 878	2 946	1 654	1 330	2 032	4 529
T. Net saving (U+V+X+Y)	117 020	82 278	68 770	47 909	1 765	-40 121	2 104	21 700	40 955
U. Pension and ATP contributions (own and employer's)	57 569	86 056	56 057	43 406	20 510	1 481	6 800	13 011	37 609
V. Payments to private life insurance, etc.	4 944	3 201	1 785	2 000	792	17	153	1 078	1 630
X. Value of conversion, etc. of buildings	32 320	37 149	16 845	9 753	3 061	248	3 284	3 421	12 571
Y. Other saving, including residual	22 187	-44 128	-5 917	-7 251	-22 599	-41 867	-8 134	4 191	-10 856
Z. Consumption (P-Q-R-S-T)	340 456	409 126	325 405	287 540	214 038	137 398	191 258	192 553	272 977
Food	35 473	40 606	33 482	29 094	27 720	14 943	19 885	25 117	28 203
Beverages and tobacco	14 209	14 420	10 778	11 738	14 108	4 988	8 631	11 477	11 086
Clothing and footwear	13 886	23 284	19 871	13 626	5 163	6 409	6 121	7 772	12 822
Rent (housing)	65 865	72 870	64 090	57 465	52 430	32 484	55 303	47 508	58 852
Electricity and fuels	24 167	23 066	21 494	19 345	20 050	8 426	17 058	14 540	19 203
Furniture, furnishings, household services	22 419	25 459	20 283	17 230	11 415	6 102	10 480	10 043	16 242
Medical products, services of physicians	7 513	8 903	7 195	6 221	3 667	4 264	8 634	3 487	7 196
Purchase of vehicles	24 417	31 579	17 206	21 965	4 531	423	7 483	7 918	17 117
Other transport services and communications	35 463	51 955	42 076	34 370	20 198	20 516	16 020	24 268	31 203
Recreation, entertainment, travels	37 430	53 319	36 189	33 523	27 330	19 674	21 977	18 047	32 012
Other goods and services	59 612	63 665	52 739	42 962	27 429	19 169	19 667	22 375	39 042
Indirect transfers from the public sector, total	49 546	77 875	70 897	62 917	63 276	89 869	48 845	90 658	62 886
Child care	12 579	23 173	22 218	15 437	31 934	11 712	59	23 967	13 312
Education	31 237	47 280	41 665	38 562	23 515	74 231	1 775	55 498	30 350
Health	5 730	7 422	7 013	8 918	7 828	3 926	47 011	11 192	19 225
Taxes on production and import, total	89 610	100 960	75 918	69 096	48 622	24 642	43 152	41 404	64 776
VAT	48 295	59 558	44 150	39 478	29 234	17 827	23 663	24 978	37 071
Excise duty	32 002	33 195	25 577	25 021	16 282	5 477	15 157	14 084	22 525
Stamp duties	475	925	525	313	118	109	126	13	345
Real property tax	8 838	7 283	5 667	4 283	2 988	1 229	4 207	2 328	4 834
	number								
Persons per household	2.3	2.8	2.6	2.4	2.0	1.4	1.4	2.4	2.1
Of whom adults	1.8	1.9	1.8	1.8	1.4	1.3	1.4	1.6	1.6
Households in the survey	95	394	348	819	49	82	574	102	2 463
Households in Denmark - thousands	123	308	298	851	50	50	720	121	2 521

For further information visit www.statbank.dk/fu5 and fu6

Table 230

Consumption expenditure of households by type of dwelling. 2005

	Owner occupied detached house	Owner- occupied flat	Rented detached house	Rented flat	Flat in housing co- operative	Rented room	Dwelling free of charge ¹	Total
DKK per household								
Total income	676 812	556 696	379 277	314 946	382 200	162 220	878 741	504 912
Income taxes, etc.	211 992	172 147	112 833	92 244	121 844	39 361	307 206	155 604
Disposable amount	421 663	340 733	257 678	216 048	251 234	119 714	532 746	323 259
Net saving	67 973	66 301	18 546	12 754	5 368	-5 337	113 159	40 955
Total consumption	341 850	266 517	227 886	197 751	236 059	122 602	413 962	272 977
A Food	33 972	25 677	26 850	22 220	23 904	12 817	38 840	28 203
B Beverages and tobacco	11 472	13 709	9 751	10 764	10 188	10 031	9 496	11 086
C Clothing and footwear	15 330	11 465	9 227	11 093	11 673	2 495	44 723	12 822
D Housing, total	69 278	59 597	54 291	49 009	50 987	21 375	46 968	58 852
Rent	483	514	45 305	42 816	41 114	18 868	26 965	19 965
Stamp duties, loans in owner-occupied dwelling	-	-	-	-	186	-	-	15
Permanent renting of secondary dwelling, etc.	148	171	23	157	249	-	-	145
Imputed rent, owner-occupied dwelling	43 384	30 653	-	-	-	-	-	22 112
Land tax, owner-occupied dwelling	7 170	4 555	96	67	71	146	-	3 669
Stamp duties, loans in owner-occupied dwelling	238	938	-	-	-	-	-	155
Value of dwelling free of charge	-	-	-	1	-	-	11 192	16
Imputed rent, secondary dwelling	1 623	2 150	710	823	1 499	-	3 533	1 288
Land tax, secondary dwelling	490	820	299	193	602	-	1 462	399
Stamp duties, loans in secondary dwelling	-	-	-	5	-	-	-	2
Materials for maintenance of dwelling	1 935	480	660	466	771	293	-	1 202
Materials for repair of dwelling	1 370	2 520	278	316	471	329	-	927
Flagstones, etc. for gardens	406	-	185	3	3	-	-	209
Repair, etc. workman, dwelling	3 404	3 933	1 519	347	1 838	-	-	2 163
Water supply	1 839	1 458	1 273	1 039	1 211	497	1 639	1 455
Refuse collection	2 125	1 501	1 925	1 725	1 504	790	918	1 873
Water drainage, sewerage	2 204	1 642	1 293	937	1 098	363	1 258	1 596
Miscellaneous maintenance	2 096	435	697	63	192	77	1	1 110
Payments to homeowners' association, etc.	363	7 830	27	51	178	14	1	550
E Electricity and fuels	24 856	15 265	18 659	13 522	13 081	7 768	23 981	19 203
F Furniture, furnishings, household services	21 345	17 210	13 562	10 381	13 619	4 225	19 177	16 242
G Medical products, services of physicians	8 918	7 071	5 997	4 727	7 609	5 784	6 769	7 196
H Purchase of vehicles	25 872	13 413	11 593	6 328	16 072	3 860	29 679	17 117
I Transport services and communications	39 773	27 847	26 565	21 607	25 630	18 664	42 734	31 203
J Recreation, entertainment, travels	41 092	33 176	23 929	21 836	26 993	17 045	53 726	32 012
K Other goods and services	49 942	42 086	27 462	26 265	36 303	18 537	97 868	39 042
Interest on mortgage loans	35 913	33 779	1 009	617	948	658	-	19 025
Extension, etc. of dwelling	22 158	24 602	2 068	1 066	5 271	-	-	12 571
Total income per person	265 416	311 004	175 591	183 108	238 875	135 183	253 239	237 048
Total consumption per person	134 059	148 892	105 503	114 972	147 537	102 169	119 297	128 158
number								
Size of dwelling, square metre	143	86	95	76	82	31	160	109
Year of construction	1947	1938	1959	1954	1953	1939	1934	1950
Persons per household	2.5	1.8	2.2	1.7	1.6	1.2	3.5	2.1
Of whom adults	1.9	1.5	1.5	1.4	1.4	1.2	2.0	1.6
Households in the survey	1 101	165	153	745	214	81	4	2 463
Households in Denmark - thousands	1 206	111	187	732	201	79	4	2 521
Persons in Denmark - thousands	3 075	199	405	1 257	321	96	13	5 365

¹ The figures are subject to uncertainty due to the small number of households in the sample.

For further information visit www.statbank.dk/fu5 and [fu6](http://www.statbank.dk/fu6)

Table 231 (page 1 of 5) **Consumption expenditure of households by type of household. 2005**

	Single persons under 60 years without children	Single persons 60 years + without children	Single persons with children	2 adults, head of household under 60 years without children	2 adults, head of household 60 years + without children	2 adults with children	Households with at least 3 adults	Total
	DKK per household							
Total income	304 014	245 320	349 054	638 816	434 486	790 050	866 695	504 912
Disposable amount	194 040	171 975	247 652	405 418	304 347	478 542	541 766	323 259
Net saving	12 919	2 641	26 963	67 030	27 345	75 749	94 458	40 955
Consumption expenditure	176 235	159 503	216 372	329 170	264 972	391 697	431 511	272 977
Food	14 377	15 280	27 643	31 097	29 083	44 784	47 856	28 203
1111 Rice etc.	62	79	170	133	90	222	116	121
1112 Bread, dry cakes, cookies and biscuits	1 685	1 658	3 093	3 622	3 228	5 306	5 795	3 273
1113 Pasta products	170	36	334	295	80	438	376	232
1114 Cakes, ready-prepared dishes with bread	457	323	528	794	582	905	669	614
1116 Flour, cereals, etc.	323	200	794	681	538	1 542	1 388	727
1121 Beef and veal	943	637	1 788	2 061	1 764	2 863	3 023	1 750
1122 Pork	537	803	1 050	1 607	1 918	1 632	2 117	1 292
1123 Meat of lamb	41	37	135	86	205	187	107	107
1124 Poultry	523	436	835	929	861	1 461	2 087	929
1125 Offal, spreads, bacon, sausages, etc.	1 279	1 335	1 937	2 834	2 459	4 192	4 386	2 525
1126 Processed meat, meat products	161	308	150	264	238	290	243	243
1127 Other fresh meat	5	6	0	12	22	10	23	11
1131 Fresh and frozen fish	223	322	352	430	613	509	860	432
1132 Shellfish, not tinned	75	98	145	230	160	142	187	140
1133 Smoked and salted fish	61	165	104	196	207	131	151	142
1134 Processed fish, fish products	328	494	537	718	849	778	897	628
1141 Whole milk	76	97	205	90	220	313	343	172
1142 Semi-skimmed, skimmed, butter milk	505	402	1 122	928	797	1 968	1 620	991
1143 Breast-milk replacement, soya milk	13	0	2	22	34	122	14	36
1144 Junket, yoghurt, etc.	240	390	506	564	515	813	977	532
1145 Cheese	796	1 071	1 265	1 858	1 961	2 125	2 412	1 569
1146 Other dairy products	267	334	575	505	566	769	763	505
1147 Eggs	204	303	350	455	532	546	619	409
1151 Butter, etc.	218	355	510	417	531	725	798	469
1152 Margarine, in all forms	44	123	57	180	241	164	256	145
1153 Olive oil	21	13	22	39	60	77	61	42
1154 Other vegetable oils	24	15	57	36	60	81	70	45
1155 Lard, deep frying fat	2	18	0	17	21	9	3	11
1161 Citrus fruit	175	226	328	408	369	556	611	361
1162 Bananas	165	184	378	331	288	595	532	332
1163 Apples	192	263	446	463	473	677	610	423
1164 Pears	65	80	112	122	113	186	144	115
1165 Peaches, plums, avocado, cherries	74	59	141	136	185	235	250	143
1166 Berries	162	303	420	408	465	524	661	384
1167 Other fruit	80	57	231	180	154	275	267	161
1168 Dried fruit, nuts	209	173	306	416	355	540	733	363
1169 Conserved fruit, fruit salad	15	45	53	41	61	55	37	42
1171 Leaf and stick vegetables	195	203	356	480	354	631	824	402
1172 Cabbage	83	175	129	243	279	274	299	206
1173 Tomatoes, cucumbers, peppers, peas	460	493	1 107	1 118	969	1 698	1 702	1 003
1174 Root vegetables, onions, mushrooms	309	331	725	701	628	935	898	604
1175 Dried vegetables	9	2	66	23	32	34	14	21
1176 Processed and mixed vegetables	286	250	379	582	503	616	698	456
1177 Potatoes	185	262	454	501	589	558	852	436
1178 Potato-based products	145	53	380	301	158	524	454	265
1181 Sugar etc.	66	106	142	115	265	223	427	167
1182 Jams, honey, etc.	139	240	186	268	373	387	407	278
1183 Chocolate	496	596	1 062	927	776	1 623	1 843	963
1184 Sweets, marzipan	791	391	1 981	1 402	848	2 595	2 547	1 367

For further information visit www.statbank.dk/fu5 and [fu6](http://www.statbank.dk/fu6)

Table 231 (page 2 of 5) **Consumption expenditure of households by type of household. 2005**

	Single persons under 60 years without children	Single persons 60 years + without children	Single persons with children	2 adults, head of household under 60 years without children	2 adults, head of household 60 years + without children	2 adults with children	Households with at least 3 adults	Total
	DKK per household							
1185 Ice-cream	293	291	845	726	594	1 235	1 041	668
1186 Other sugar products	9	20	21	16	23	41	12	21
1191 Sauces, condiments	299	212	480	774	475	865	1 095	563
1192 Salt, spices, vanilla, etc.	83	89	159	204	209	243	290	170
1193 Baking powder, yeast, soup, bouillon	102	99	129	189	183	309	209	176
1194 Preservatives, etc.	8	18	10	24	16	29	41	20
Beverages and tobacco	9 074	6 462	9 080	14 589	11 437	12 571	16 439	11 086
1211 Coffee, coffee products	529	657	390	964	1 121	869	1 142	804
1212 Tea, tea products	73	62	148	133	162	153	217	122
1213 Cocoa	16	7	60	29	24	53	27	28
1221 Mineral water	68	59	69	181	97	136	188	111
1222 Soft drinks, etc.	866	280	1 432	1 594	568	2 002	2 127	1 191
1223 Fruit juices	281	221	495	582	371	842	740	486
1224 Vegetable juices	6	1	0	12	27	28	18	14
2111 Spiritus	570	618	312	1 018	1 197	587	1 191	770
2121 Wine	1 310	1 484	1 421	3 108	3 243	2 502	3 735	2 305
2122 Port, fortified wine, champagne, etc.	75	85	37	220	201	176	348	155
2131 Beers	1 428	560	831	1 781	1 352	1 204	1 774	1 287
2211 Cigarettes	3 249	1 815	3 203	4 094	2 103	3 496	4 192	3 117
2212 Cigars, cheroots	35	166	0	105	128	26	1	75
2213 Tobacco, other tobacco products	569	449	684	769	846	498	739	623
Clothing and footwear	7 792	5 239	16 355	13 821	9 187	23 350	19 219	12 822
3111 Clothing materials	79	30	110	82	50	137	17	76
3121 Garments for men	2 228	611	1 591	3 670	2 003	3 631	6 387	2 711
3122 Garments for women	2 903	3 131	5 157	6 141	4 896	7 192	7 141	4 993
3123 Garments for children and infants	209	241	3 299	477	283	6 304	901	1 658
3131 Clothing, accessories, etc.	388	261	765	831	467	750	822	571
3141 Laundering, dry cleaning, repair of clothing	260	191	439	189	162	398	94	248
3211 Footwear for men	590	119	961	763	296	1 195	817	655
3212 Footwear for women	1 018	638	2 180	1 562	970	1 950	2 721	1 396
3213 Footwear for children and infants	91	0	1 853	76	6	1 764	294	487
3221 Repair of footwear	26	16	0	29	54	31	25	28
Rent (housing)	42 328	51 749	55 791	62 421	67 646	70 369	72 634	58 852
4111 Rentals for housing	23 749	27 017	39 738	18 421	14 166	13 269	11 811	19 980
4121 Permanent rentals for secondary dwellings, etc.	60	95	92	204	407	95	79	145
4211 Rental value of owner-occupied dwelling	10 187	16 335	9 861	29 889	35 291	39 881	42 987	25 936
4221 Rental value of free accommodation	1	0	0	95	0	0	0	16
4222 Rental value of own secondary dwelling	1 047	1 011	633	2 257	3 255	1 486	2 284	1 689
4311 Materials for repairs, etc. of dwellings	1 389	255	360	2 825	2 796	4 285	4 084	2 338
4321 Repairs, services of skilled craftsmen	1 392	2 182	315	1 437	4 484	2 260	2 934	2 163
4411 Water supply	997	1 109	1 258	1 537	1 662	1 859	2 144	1 455
4421 Refuse collection	1 490	1 646	1 959	2 002	2 038	2 111	2 285	1 873
4431 Water drainage, sewerage	963	1 146	1 330	1 678	1 800	2 207	2 555	1 596
4441 Miscellaneous maintenance	1 053	954	246	2 076	1 749	2 916	1 472	1 660
Electricity and fuels	13 667	14 676	17 257	19 885	21 202	23 726	30 746	19 203
4511 Electricity	5 480	4 170	5 869	6 277	7 008	8 805	11 244	6 669
4521 Town, natural gas	576	1 162	1 014	1 970	1 292	2 837	2 942	1 633
4522 Bottled gas	5	14	-	14	81	2	21	18
4531 Liquid fuel	634	1 665	1 080	1 953	2 987	2 271	2 733	1 825
4541 Solid fuel	362	541	592	501	819	1 672	1 852	846
4551 District heating	6 610	7 125	8 702	9 170	9 015	8 139	11 954	8 212

Table 231 (page 3 of 5) **Consumption expenditure of households by type of household. 2005**

	Single persons under 60 years without children	Single persons 60 years + without children	Single persons with children	2 adults, head of household under 60 years without children	2 adults, head of household 60 years + without children	2 adults with children	Households with at least 3 adults	Total
	DKK per household							
Furniture, furnishings and household services	9 389	7 758	9 703	23 666	16 330	24 407	21 212	16 242
5111 Furniture and furnishing	3 464	2 126	3 022	9 445	4 474	8 502	5 953	5 535
5121 Carpets, rugs	340	264	362	675	701	560	439	483
5131 Repair of furniture, household articles, etc.	30	268	0	68	117	60	206	104
5211 Boligtekstiler	589	535	711	1 420	1 466	1 729	2 221	1 179
5311 Refrigerators, freezers	392	222	21	683	384	791	263	465
5312 Washing machines, tumblers, dishwashers	473	421	691	1 056	1 075	1 609	805	899
5313 Cookers	201	80	232	536	449	523	359	346
5314 Extractor fans, elec./gas fan ovens, etc.	74	11	111	188	124	316	140	143
5315 Vacuum cleaners, etc.	122	66	126	268	114	241	202	166
5316 Electric sewing machines	58	29	0	87	73	71	6	56
5317 Husholdningsapparater mv.	0	0	0	0	0	0	0	0
5321 Smaller household appliances	79	104	335	338	279	217	123	195
5331 Repair of household appliances	0	122	0	0	3	7	0	22
5411 Glasses, tableware, kitchen ware	158	134	363	658	411	343	593	348
5412 Cutlery, etc.	38	37	7	74	199	133	66	84
5413 Kitchen and domestic utensils	815	413	656	1 565	1 306	1 542	1 913	1 152
5511 Major tools and equipment	441	246	397	1 234	611	1 044	928	716
5521 Tools and equipment	722	742	439	1 726	1 598	1 940	2 267	1 344
5611 Cleaning and polishing agents	318	486	556	897	1 017	1 259	1 610	821
5612 Other consumables	600	576	1 004	1 492	1 152	1 720	1 897	1 149
5621 Domestic services	299	568	487	694	572	1 274	772	680
5622 Household service	174	309	183	562	207	527	451	356
Medical products and health services	3 344	6 038	3 354	10 538	12 672	6 403	8 533	7 196
6111 Medical products, vitamins, etc.	1 025	1 687	1 313	2 093	3 615	1 667	3 125	1 940
6121 Other medical products	60	39	9	78	76	130	94	76
6131 Spectacles, etc.	607	1 126	4	3 007	3 977	633	764	1 531
6211 General practitioner	25	66	33	68	139	202	119	96
6221 Dentist	1 071	1 468	1 067	3 311	3 748	2 330	2 637	2 224
6232 Physiotherapist, chiropractor, etc.	454	1 446	619	1 215	1 021	1 078	1 443	1 021
6233 Hire of contact lenses and spectacles	91	0	309	274	-	223	279	144
6311 Hospitals	11	206	-	492	96	140	72	165
Purchase of vehicles	8 214	4 047	1 135	27 102	14 364	27 178	39 602	17 117
7111 Cars	7 161	3 889	68	25 948	14 402	24 647	37 039	15 942
7121 Motor cycles, etc.	626	27	289	348	-237	862	1 845	482
7131 Bicycles	427	130	778	806	199	1 669	719	693
Other transport services and communications	21 685	12 133	23 153	40 916	25 489	44 640	61 410	31 203
7211 Spare parts, accessories for vehicles	765	643	469	1 576	1 076	3 051	2 903	1 507
7221 Petrol, lubricants	6 256	2 543	6 235	13 145	8 738	14 146	22 993	9 846
7231 Repair, etc. of vehicles	2 201	1 724	3 362	4 677	3 357	5 649	6 958	3 755
7241 Other services relating to vehicles	1 314	495	1 849	3 450	2 068	4 988	6 527	2 748
7251 Vehicle license duty	1 438	1 267	1 309	2 905	3 071	4 169	4 960	2 648
7321 Taxi-cabs	748	297	221	433	176	482	546	454
7331 Airline tickets	925	239	663	2 566	924	1 456	2 468	1 290
7341 Ferries	213	69	18	435	275	458	397	287
7351 Combined passenger transport	2 720	1 306	2 670	3 697	741	2 319	3 589	2 372
7361 Other transport services	259	135	53	365	234	227	24	221
8111 Postage	201	236	151	343	417	294	267	280
8211 Purchase of telephone and equipment	163	33	127	460	162	511	451	279
8311 Telephone services, call charges	4 481	3 146	6 026	6 864	4 249	6 893	9 329	5 516

Table 231 (page 4 of 5) **Consumption expenditure of households by type of household. 2005**

	Single persons under 60 years without children	Single persons 60 years + without children	Single persons with children	2 adults, head of household under 60 years without children	2 adults, head of household 60 years + without children	2 adults with children	House- holds with at least 3 adults	Total
	DKK per household							
Recreation, entertainment and travels	21 944	19 898	23 164	40 299	27 969	43 808	52 871	32 012
9111 Radio, music players, etc.	2 246	14	402	1 093	681	1 335	493	1 090
9112 TV-sets, video recorders, etc.	1 062	517	1 057	2 937	1 237	2 380	2 327	1 660
9121 Photographic equipment, video cameras	530	50	327	908	292	774	607	528
9122 Microscopes, binoculars, magnifying glasses	-	0	0	92	0	0	0	16
9131 Personal computers, etc.	3 174	278	1 531	2 666	828	3 899	3 642	2 400
9141 Cd, video tapes and photos	987	409	965	1 163	878	1 679	2 053	1 116
9151 Repair of radio, TV-sets, pc, photo equipment, etc.	10	0	331	119	325	34	118	95
9211 Caravans, boats, etc.	168	2 508	-1 473	4 739	-634	2 501	12 799	2 486
9221 Musical instruments, etc.	437	5	212	130	380	373	578	292
9231 Repair of caravans, boats, musical instruments, etc.	0	0	3	15	21	1	0	6
9311 Games, toys, hobby goods	636	535	3 530	1 933	1 106	4 669	1 782	1 907
9321 Equipment for sports, camping, etc.	171	77	410	475	161	1 818	790	584
9331 Plants, flowers, fertilizers, etc.	875	2 055	1 202	2 737	3 340	2 191	2 343	2 085
9341 Pets, pet foods and accessories	948	270	330	1 325	911	2 049	3 208	1 239
9351 Veterinary and other services relating to pets	274	177	307	731	311	811	739	480
9411 Sporting activities, fairs, etc.	1 053	550	1 424	1 599	838	2 434	1 728	1 370
9421 Cinemas, theatres, concerts	911	444	915	1 100	903	1 189	1 335	949
9422 Museums, zoological gardens, etc.	128	98	109	233	144	369	94	187
9423 TV licence fees, rental of TV-equipment, films, etc.	3 039	3 264	3 601	3 907	3 478	3 932	3 928	3 544
9424 Musicians, photographers, film developing, etc.	134	59	189	285	178	676	396	280
9431 Football pools, lottery, bingo, etc.	1 184	1 641	1 440	2 216	1 861	1 433	2 753	1 693
9511 Books	1 316	591	954	1 661	1 032	1 471	1 863	1 269
9521 Newspapers, magazines	662	2 708	2 183	2 307	3 318	1 658	1 709	1 967
9531 Printed matter	72	94	262	176	147	228	188	151
9541 Stationary and drawing materials	154	137	310	369	203	519	434	292
9611 Package holidays	1 773	3 420	2 644	5 382	6 029	5 388	6 965	4 327
Other goods and services	24 420	16 223	29 737	44 838	29 595	70 459	60 991	39 042
9721 General schools, upper-secondary education, other education	181	157	1 779	714	77	1 712	2 329	777
9741 Further and higher education	214	0	257	214	0	117	73	124
9751 Leisure-time education, youth schools, etc.	81	222	368	172	210	182	320	186
9811 Restaurants, etc.	8 296	2 320	5 315	12 492	5 287	13 591	12 645	8 831
9812 Canteens	840	356	824	1 135	322	1 381	2 495	962
9821 Hotels, campsites, etc.	1 107	577	768	2 935	1 959	3 542	2 959	2 033
9911 Hairdressers, beauty, etc.	1 156	1 550	1 962	2 603	3 049	3 641	3 475	2 401
9912 Toiletries, electric razors, etc.	161	141	0	66	20	101	512	128
9913 Soap, toothpaste, diapers, etc.	1 957	1 754	3 305	3 882	2 801	6 776	7 053	3 723
9921 Prostitution	0	0	0	0	0	0	0	0
9931 Jewellery, watches, etc.	359	426	583	2 734	880	1 585	2 199	1 221
9932 Sunglasses, pipes, bags, prams, etc.	553	155	1 247	800	371	1 390	1 558	771
9941 Day-care institutions, etc.	119	662	4 825	8	14	16 333	162	3 584
9951 Life insurance	625	81	608	1 994	274	2 059	2 259	1 116
9952 Family and household insurance	2 598	2 842	2 144	4 065	4 485	4 648	5 343	3 707
9953 Accident and health insurance	1 027	700	1 366	2 399	2 043	3 266	3 674	1 978
9954 Transport insurance	2 923	2 753	2 823	6 524	6 315	7 252	11 590	5 398
9955 Other insurances	285	169	317	517	303	567	827	402

Table 231 (page 5 of 5) **Consumption expenditure of households by type of household. 2005**

	Single persons under 60 years without children	Single persons 60 years + without children	Single persons with children	2 adults, head of household under 60 years without children	2 adults, head of household 60 years + without children	2 adults with children	House- holds with at least 3 adults	Total
	DKK per household							
9962 One-time fees and service charges for bank and insurance services	418	221	230	795	350	968	903	574
9972 Other services	1 522	1 139	1 016	789	836	1 347	613	1 123
	number							
Persons per household	1.0	1.0	2.5	2.0	2.0	3.9	3.7	2.1
Of whom adults	1.0	1.0	1.0	2.0	2.0	2.0	3.1	1.6
Households in the survey	608	285	119	446	349	540	116	2 463
Households in Denmark – thousands	558	418	116	429	330	496	174	2 521

Table 232 (page 1 of 2) **Price index for domestic supply**

2000/ HS ¹ chapter		Weight	2006 Average	2007 Average
		per cent	2000=100	
02	Meat and edible meat offals	1.99	106.9	106.5
03	Fish and crustaceans	1.42	140.5	141.5
04	Milk and dairy produce, etc.	1.99	103.9	111.3
05	Products of animal origin n.e.s.	0.24	117.5	129.0
07	Vegetables	0.78	137.8	151.2
08	Fruit, nuts, citrus fruit, melons	0.48	112.6	110.9
09	Coffee, tea, spices	0.31	110.1	111.6
10	Cereals	1.53	89.8	133.1
11	Products of the milling industry, malt, starch, inulin and wheat gluten	0.34	98.2	125.7
12	Oil seeds, oleaginous fruit; other seeds and fruit, etc.	1.10	124.5	127.5
13	Shellac, hydrated rubber and resin, etc.	0.20	97.5	99.8
15	Animal and vegetable fats and oils	0.59	130.4	157.2
16	Preparations of meat, fish and crustaceans	1.45	114.3	118.9
17	Sugar and sugar confectionery	0.69	108.9	112.3
18	Cocoa and other cocoa preparations	0.43	104.4	105.7
19	Preparations of cereals, flour, starch or milk, bakery products	1.04	108.2	111.7
20	Preparations of vegetables, fruit, nuts or other plants	0.71	112.4	127.3
21	Miscellaneous edible preparations	0.67	110.5	114.4
22	Beverages, ethanol and vinegar	2.02	107.7	112.3
23	Residual products from the food processing industry, preparations of animal feedstuffs	1.50	116.8	132.2
24	Tobacco and manufactured tobacco substitutes	0.48	114.0	120.8
25	Salt, sulphur, soil and stones; plaster, lime, cement	0.77	115.8	122.5
27	Mineral fuels, mineraloil and distillery products thereof	8.43	174.9	183.3
28	Inorganic chemicals	0.56	118.2	118.3
29	Organic chemicals	0.98	103.2	104.3
30	Pharmaceutical products	1.69	103.1	104.5
31	Fertilizers	0.32	142.9	155.9
32	Dyes, colours, paints	1.01	112.2	113.4
33	Volatile vegetable oils and essential oils; perfumery, cosmetics, toiletpreparations	0.45	110.5	113.7
34	Soap, washing and cleaning preparations	0.59	109.9	110.9
35	Albuminoidal substances, modified starch, glues, and enzymes	0.34	83.9	84.7
37	Photographic and cinematographic goods	0.44	99.8	100.2
38	Miscellaneous chemical products	1.05	107.4	111.7
39	Artificial resins and plastic materials	4.98	117.3	120.0
40	Rubber and articles thereof	0.73	104.3	106.7
41	Raw hides and skins and leather	0.07	83.4	86.5
42	Articles of leather; saddlery; luggage and bags, etc.	0.21	99.7	99.6
44	Wood and articles of wood	3.70	111.4	124.1
47	Paper-making material of wood or other cellulosic, materials	0.11	87.1	96.3
48	Paper and paperboard, articles thereof	3.50	101.4	104.6
51	Wool and animal hair; yarn and textiles fabrics of horsehair	0.11	102.1	101.9
52	Cotton	0.19	91.9	91.1
54	Continuous man-made fibers	0.32	106.0	106.6
55	Discontinuous man-made fibers	0.19	101.5	102.0
56	Cotton wool, nonwovens; cordage and rope, and articles thereof	0.15	105.5	105.8
57	Carpets and other flooring of textile materials	0.19	108.7	110.7
58	Special textile fabrics; tufted textiles, laces; tapestry and trimmings, embroidery	0.06	100.6	102.4
59	Impregnated, knitted or crocheted textile articles, technical textile articles	0.12	106.7	108.2
60	Knitted and crocheted goods	0.15	93.4	93.3
61	Articles of apparel and accessories, of knitwear	1.07	99.6	98.4
62	Articles of apparel and accessories, except knitwear	1.17	99.3	97.9
63	Other made up textile articles	0.39	114.6	113.5
64	Footwear, leggings and related parts	0.58	105.9	108.2
68	Articles of stone, plaster, cement, etc.	1.75	113.7	125.2
69	Ceramic products	0.41	112.1	118.0

¹ HS chapter is the nomenclature of the Customs Cooperation Council (Harmonized System).

For further information, visit www.statbank.dk/pris11

Table 232 (page 2 of 2) **Price index for domestic supply**

2000/ HS ¹ chapter	Weight	2006 Average	2007 Average
	Per cent	2000 = 100	
70 Glass and glassware	1.16	109.3	118.3
71 Precious metals and articles thereof	0.18	125.1	132.9
72 Iron and steel	1.73	157.2	176.7
73 Articles of iron and steel	4.13	126.6	133.8
74 Copper and articles thereof	0.44	128.2	138.7
76 Aluminium and articles thereof	1.70	113.2	121.9
79 Zinc and articles thereof	0.07	218.2	256.8
82 Tools and implements of base metal	0.49	110.3	110.4
83 Miscellaneous articles of base metal	0.76	110.6	116.5
84 Machinery and appliances; mechanical, implements and spare parts	11.65	91.1	89.3
85 Electrical machinery and equipment and related parts	9.86	99.0	99.9
87 Vehicles and spare parts	4.76	109.1	111.0
90 Optical photo and measuring equipment	2.33	105.8	106.5
91 Clocks and watches and related parts	0.08	103.9	98.2
94 Furniture and specified lightning equipment	3.44	109.7	113.2
95 Toys; games, sport goods, etc.	0.47	100.5	100.2

Table 233 **Price index for domestic supply by categories of use**

	Weight	2006 Average	2007 Average
	per cent	2000 = 100	
Price Index for Domestic Supply total	100.00	113.2	117.9
Producers' materials	69.89	113.7	119.5
Raw materials for agriculture	3.64	117.3	139.1
Raw materials for other industries	45.69	118.1	125.0
Fuels and lubricants	4.39	163.4	170.9
Machinery and tools; goods transport equipment	16.17	92.0	91.2
Consumer goods	30.11	110.9	113.3
Foods of animal origin, excl. fish	5.37	107.2	110.8
Fish and fish products	1.89	134.9	135.9
Foods of vegetable origin	3.14	120.3	128.3
Beverages and tobacco	2.88	113.8	118.3
Other consumer goods	16.83	106.7	107.5
Distribution by origin:			
Danish goods	43.23	119.0	126.8
Danish producers' materials	29.78	120.5	130.0
Danish consumer goods	13.45	114.3	118.4
Imported goods	56.77	107.0	109.6
Imported producers' materials	40.10	107.5	110.7
Imported consumer goods	16.67	106.0	107.1
Imported unprocessed raw materials, total			
= Raw material price index¹ total	10.03	144.1	155.8
Unprocessed materials for agriculture	0.87	107.9	134.2
Unprocessed materials for other industries	6.95	140.9	151.0
Fuels and lubricants	2.22	174.0	183.8

¹ The raw materials price index includes unprocessed, imported raw materials and fuels.

For further information visit www.statbank.dk/pris10 and [pris11](http://www.statbank.dk/pris11)

Table 234

Domestic supply of some important food stuffs

	Supply, total		
	2005	2006	2007
	thousand tonnes		
Milk and cream			
Whole milk ¹	237	226	230
Skim- and buttermilk	257	271	279
Junket and yoghurt	105	107	111
Other milk products ²	68	72	73
Cream (incl. cultured cream)	49	47	55
Fats			
Butter ³	11	9	10
Margarine	50	47	46
Cheese
Eggs	92	92	..
Meat			
Beef and veal ⁴	141	147	152
Pork ⁴	239	240	..
Poultry meat	125	117	124
Horse meat	1	1	0
Mutton and lamb	7	7	9
Game meat	4	4	4
Flour and groats, etc.			
Wheat flour	332	330	313
Durum wheat e.g. pasta products	27	33	38
Rye flour	78	84	84
Oat-meal	23	26	26
Rice and rice flour	34	33	35
Other flours and groats, etc.	67	68	66
Sugar	185	205	205
Potatoes	298	299	299
Organic products⁵			
Milk	144	148	166
Eggs	7	7	..

Note: The figures shows the supply available for human consumption in Denmark.

¹ Excl. natural milk at producers for consumption. ² Includes various cultured-milk products, chocolate milk and skimmed chocolate milk. ³ In addition, there are mixed products which comprise about 27 mio. kg a year since 1996. ⁴ The figures exclude consumption of edible offals. New calculation method for pork from 2005. ⁵ Part of total supply.

For further information visit www.statbank.dk/fvf1 and [fvf11](#)

Table 235

Consumption of beverages and tobacco

	2004	2005	2006
	— mio. litre —		
Consumption of beer	572	574	554
Dutiable sales of lager equivalents	487	484	474
Estimated cross-border shopping (net)	85	90	80
Consumption of wine	171	173	172
Dutiable sales	159	164	162
Estimated cross-border shopping (net)	12	9	10
Consumption of spirits	32	32	25
Dutiable sales	25	28	23
Estimated cross-border shopping (net)	7	4	2
Consumption of alcoholic soft drinks	-	-	5
Dutiable sales	-	-	5
Estimated cross-border shopping (net)	-	-	-
	— avg. litres —		
Consumption of pure alcohol per capita	10.3	10.4	10.0
Consump. of pure alcohol per capita over 14 years	12.7	12.8	12.1
	— mio. units —		
Consumption of cigarettes, cigarillos, etc.	8 842	8 469	8 635
Dutiable sales	8292	8069	8335
Estimated cross-border shopping (net)	550	400	300
	— units —		
Avg. consumption of cigarettes, cigarillos, etc.	3 654	3 489	3 513
Per capita	1 637	1 564	1 589
Per capita over 14 years	2 017	1 925	1 924
	— tons —		
Consumption of smoking tobacco	1 775	1 497	1 332
Dutiable sales	1 325	1 122	1 032
Estimated cross-border shopping (net)	450	375	300

Note: Up to and including 2005, the statistics of dutiable sales of beer, wine and spirits also contain alcoholic soft drinks based on the type of alcohol in question. The figures on sales and thereby also consumption before and after 2006 are not strictly comparable. This applies especially to spirits.

For further information visit www.statbank.dk/alko1

Table 236

Net price index

	Jan.	Feb.	March	April	May	June	July	Aug.	Sept.	Oct.	Nov.	Dec.	Annual average	Percent- age annual increase
	— 2000=100 —													
2000	98.1	98.9	99.5	99.7	100.1	100.4	100.0	99.8	100.6	100.8	101.0	100.9	100.0	3.1
2001	100.4	101.4	102.0	102.5	102.9	102.9	102.4	102.3	102.8	103.0	102.8	103.0	102.4	2.4
2002	103.1	104.1	104.7	105.1	105.2	105.1	104.8	104.8	105.5	105.7	105.6	105.6	104.9	2.5
2003	105.8	107.0	107.8	107.8	107.6	107.5	106.9	106.9	107.5	107.6	107.8	107.6	107.3	2.3
2004	107.4	108.3	108.9	109.0	109.4	109.1	108.7	108.4	109.0	109.4	109.1	108.9	108.8	1.4
2005	108.7	109.9	110.6	111.2	111.1	111.2	111.0	111.0	111.9	111.8	111.5	111.6	111.0	2.0
2006	111.3	112.4	112.8	113.4	113.5	113.7	113.5	113.5	113.8	113.6	113.6	113.6	113.2	2.0
2007	113.3	114.7	115.1	115.4	115.6	115.5	115.1	114.9	115.6	116.0	116.8	116.7	115.4	1.9

For further information visit www.statbank.dk/pris7

Table 237**Consumer price index, annual average**

Year	Index	Per cent ¹	Year	Index	Per cent ¹	Year	Index	Per cent ¹	Year	Index	Per cent ¹
1900=100											
1901	100	-0.2	1931	178	-5.7	1961	555	4.5	1991	4 353	2.4
1902	101	1.3	1932	177	-0.7	1962	591	6.6	1992	4 445	2.1
1903	101	-0.2	1933	181	2.7	1963	622	5.2	1993	4 500	1.3
1904	102	1.3	1934	188	3.9	1964	645	3.6	1994	4 590	2.0
1905	102	-0.5	1935	196	3.8	1965	686	6.4	1995	4 686	2.1
1906	103	0.7	1936	198	1.2	1966	733	6.8	1996	4 785	2.1
1907	106	3.5	1937	205	3.6	1967	787	7.4	1997	4 890	2.2
1908	107	0.9	1938	207	1.2	1968	850	8.0	1998	4 980	1.8
1909	108	0.7	1939	213	2.9	1969	880	3.5	1999	5 104	2.5
1910	109	0.7	1940	266	24.4	1970	937	6.5	2000	5 253	2.9
1911	109	0.2	1941	305	14.7	1971	992	5.9	2001	5 377	2.4
1912	113	3.8	1942	315	3.5	1972	1 058	6.6	2002	5 507	2.4
1913	116	2.6	1943	318	0.8	1973	1 156	9.3	2003	5 622	2.1
1914	119	2.3	1944	325	2.2	1974	1 333	15.3	2004	5 687	1.2
1915	140	18.0	1945	328	1.1	1975	1 461	9.6	2005	5 790	1.8
1916	165	17.8	1946	326	-0.7	1976	1 592	9.0	2006	5 900	1.9
1917	191	15.8	1947	335	2.9	1977	1 769	11.1	2007	6 001	1.7
1918	223	16.8	1948	344	2.5	1978	1 946	10.0			
1919	264	18.6	1949	352	2.4	1979	2 133	9.6			
1920	315	19.3	1950	384	9.1	1980	2 396	12.3			
1921	268	-15.0	1951	429	11.7	1981	2 677	11.7			
1922	228	-15.0	1952	439	2.2	1982	2 948	10.1			
1923	237	4.2	1953	436	-0.5	1983	3 152	6.9			
1924	251	6.0	1954	444	1.9	1984	3 350	6.3			
1925	244	-2.8	1955	474	6.7	1985	3 507	4.7			
1926	207	-15.0	1956	498	5.0	1986	3 636	3.7			
1927	200	-3.4	1957	504	1.2	1987	3 782	4.0			
1928	199	-0.6	1958	509	0.9	1988	3 953	4.5			
1929	198	-0.6	1959	519	2.1	1989	4 142	4.8			
1930	188	-4.8	1960	531	2.3	1990	4 251	2.6			

¹ Percentage annual increase.For further information visit www.statbank.dk/pris8 and [pris9](http://www.statbank.dk/pris9)**Table 238****Consumer price index**

	Jan.	Feb.	March	April	May	June	July	Aug.	Sept.	Oct.	Nov.	Dec.	Annual average	Percentage annual increase
2000=100														
2000	98.3	98.9	99.6	99.7	100.1	100.4	100.0	99.9	100.6	100.8	100.9	100.8	100.0	2.9
2001	100.6	101.3	101.9	102.4	102.8	102.7	102.4	102.4	102.9	103.0	102.8	103.0	102.4	2.4
2002	103.1	103.8	104.5	104.9	105.0	105.0	104.7	104.8	105.4	105.6	105.6	105.6	104.8	2.4
2003	105.8	106.8	107.5	107.5	107.3	107.3	106.7	106.6	107.4	107.1	107.2	107.1	107.0	2.1
2004	107.0	107.8	108.3	108.4	108.7	108.5	108.1	107.9	108.6	108.9	108.6	108.4	108.3	1.2
2005	108.1	109.2	109.8	110.4	110.3	110.4	110.3	110.3	111.2	111.1	110.8	110.8	110.2	1.8
2006	110.4	111.5	111.9	112.4	112.5	112.8	112.5	112.5	112.9	112.8	112.7	112.8	112.3	1.9
2007	112.4	113.6	114.1	114.3	114.5	114.4	113.9	113.7	114.3	114.7	115.5	115.4	114.2	1.7

For further information visit www.statbank.dk/pris12

Table 239

Consumer price index and its sub-indices

	Weights at Jan. 2003	2006 average	2007 average
	—2000=100—		
Consumer price index, total	100.00	112.3	114.2
Food and non-alcoholic beverages	13.23	110.2	115.1
Food	11.49	110.0	114.8
Non-alcoholic beverages	1.74	111.7	117.6
Alcoholic beverages and tobacco	4.78	99.4	101.1
Alcoholic beverages	2.38	93.7	95.2
Tobacco	2.40	105.9	107.7
Clothing and footwear	5.11	99.1	97.4
Clothing	4.24	97.2	94.1
Footwear	0.88	108.8	113.6
Housing, water, electricity, gas and other fuels	28.73	117.9	120.4
Actual and imputed rentals for housing	18.31	116.1	118.6
Maintenance and repair of the dwelling	1.52	112.6	117.7
Water supply and miscellaneous services relating to the dwelling	2.18	128.8	139.3
Electricity, gas and other fuels	6.02	121.4	121.5
Furnishings, household etc.	5.98	109.4	110.8
Furniture and furnishings, carpets etc.	2.24	105.3	105.8
Household textiles	0.51	107.1	107.5
Household appliances and repair of this	0.88	101.2	102.7
Glassware, tableware and household utensils	0.70	111.8	114.5
Tools and equipment for house and garden	0.59	106.8	107.7
Goods and services for routine household maintenance	1.05	126.8	130.2
Health	2.67	109.0	109.7
Medical products, appliances and equipment	1.31	96.4	94.7
Out-patient services	1.07	123.3	126.7
Hospital services	0.30	119.2	122.4
Transport	12.94	117.6	119.5
Purchase of vehicles	4.09	113.5	112.5
Operation of personal transport equipment	7.16	118.7	121.9
Transport services	1.69	121.4	126.7
Communication	2.07	87.6	87.6
Recreation and culture	10.05	102.6	102.9
Audio-visual, photographic and information processing equipment	2.47	69.7	63.0
Other major durables for recreation and culture	0.34	107.2	108.8
Other recreational items and equipment, gardens and pets	2.19	101.9	102.8
Recreational and cultural services	2.29	121.5	126.0
Newspapers, books and stationery	1.76	120.1	125.6
Package holidays	1.00	119.5	123.1
Education	0.81	146.1	152.7
Restaurants and hotels	5.65	115.8	118.8
Catering services	5.00	115.7	118.7
Accommodation services	0.65	118.9	123.3
Miscellaneous goods and services	7.95	122.4	122.9
Personal care	2.29	115.6	118.7
Personal effects n.e.c.	0.76	109.9	113.7
Social protection	1.66	122.3	119.1
Insurance	2.09	137.5	138.6
Financial services n.e.c.	0.83	126.2	123.4
Other services n.e.c.	0.32	119.2	123.7
Goods	53.94	107.2	108.3
Services	46.06	118.8	121.6

For further information visit www.statbank.dk/pris6

Table 240

Price index for sales of property

	One-family houses		
	2004	2005	2006
	1995=100		
All Denmark	188.5	221.3	269.0
Copenhagen Municipality	264.4	347.1	437.1
Frederiksberg Municipality	232.5	310.2	425.2
Copenhagen County	225.4	282.7	368.4
Frederiksborg County	219.6	269.6	344.6
Roskilde County	205.3	245.0	314.0
West Zealand County	205.5	235.0	280.3
Storstrøm County	199.3	226.7	263.6
Bornholm County	173.6	190.5	230.7
Funen County	165.7	190.0	232.3
South Jutland County	146.9	159.6	179.7
Ribe County	145.9	158.9	180.4
Vejle County	166.0	189.4	223.2
Ringkøbing County	144.8	157.6	178.7
Århus County	182.1	217.9	266.1
Viborg County	147.2	158.1	181.2
North Jutland County	163.6	181.7	209.3

For further information visit www.statbank.dk/ejen9

Table 241

Forced sales of real property

	2006	2007
Total	1 231	1 392
Agricultural properties	50	38
One-family houses	792	867
Owner-occupied flats	98	148
Holiday dwellings	79	94
Multi-family houses	25	39
Combined residential and business properties	52	68
Building sites	18	33
Business properties	67	57
Farm closures, etc.	50	48

For further information visit www.statbank.dk/tvang1

Table 242

Indices for price trends, ordinary free trade

	2000	2006
	index 1995 = 100	
One-family houses	153.0	269.0
Residential properties with 2 flats	156.3	276.7
Residential properties with 3 flats	146.3	230.3
Residential properties with 4-8 flats	157.6	404.8
Residential properties with 9 flats and over	180.6	527.1
Residential and business properties	161.7	347.3
Business properties	162.0	222.3
Industrial properties and warehouses	129.5	156.0
Agricultural properties, total	157.9	306.4
Weekend cottages	145.4	321.0
Building sites under 2000 m ²	118.2	160.4
Owner-occupied flats	182.0	394.5

Note: Calculations are made thus: The ratio between the cash purchase price and the cash valuation is indexed. When the valuation is changed, the first quarter in the year of valuation is chained.

For further information visit www.statbank.dk/ejen5

Table 243

Assessment of real property

	General assessment 2005			General assessment 2006		
	Assessments	Property values	Land values	Assessments	Property values	Land values
	number	DKK mio.		number	DKK mio.	
All Denmark	2 003 471	3 914 823	984 276	2 031 495	4 871 017	1 244 762
One-family houses	1 139 213	1 578 661	459 764	1 153 321	1 701 139	492 976
Two- and three-family houses	26 685	52 037	13 607	26 780	55 542	14 512
Multi-dwelling houses and commercial properties with or without residence	95 643	752 193	154 977	96 882	1 234 340	264 981
Owner-occupied flats	192 907	246 524	35 650	206 636	292 322	40 506
Holiday dwellings on own land	189 182	203 486	60 943	192 181	222 894	63 878
Industrial properties and warehouses	18 349	158 552	28 973	18 625	190 622	35 497
Agricultural properties	93 797	347 418	83 774	91 832	452 628	120 434
Nurseries and horticultural properties, fruit orchards, etc.	2 076	6 882	821	2 084	7 879	1 137
Forests and orchards separately assessed	5 321	18 866	4 934	5 385	22 613	6 115
Building sites	96 289	46 894	36 251	108 925	81 366	63 250
Government and municipal properties	13 495	204 310	42 793	13 519	258 788	64 463
Other assessed properties	130 514	299 000	61 789	115 325	350 884	77 014

Note: Due to rounding, comparison of individual figures will not always result in the totals stated.

Source: Central Tax Administration.

For further information visit www.statbank.dk/06

Table 244

Sales of real property in ordinary free trade

	Total number of sales		Average price per property DKK thousands		As percentage of public assessment ¹	
	2005	2006	2005	2006	2005	2006
One-family houses						
All Denmark	59 888	52 564	1 511	1 748	136.9	132.0
Copenhagen Municipality	778	603	3 213	4 100	149.3	138.9
Frederiksberg Municipality	64	46	5 629	6 983	147.7	145.7
Copenhagen County	5 091	3 714	3 099	3 978	148.0	138.1
Frederiksborg County	4 417	3 510	2 544	3 239	141.8	138.5
Roskilde County	3 144	2 247	2 242	2 817	137.7	136.3
West Zealand County	4 321	4 223	1 366	1 633	134.0	127.1
Storstrøm County	4 485	3 929	1 057	1 212	132.1	122.8
Bornholm County	884	909	730	886	133.9	129.3
Funen County	6 336	5 624	1 139	1 365	132.6	133.2
South Jutland County	2 895	2 848	909	1 045	120.6	123.9
Ribe County	2 629	2 452	1 008	1 139	126.6	125.0
Vejle County	4 910	4 369	1 292	1 503	134.3	128.6
Ringkøbing County	3 568	3 440	977	1 085	126.3	123.0
Århus County	6 979	5 755	1 562	1 897	144.7	137.8
Viborg County	3 276	3 043	868	971	121.2	123.1
North Jutland County	6 111	5 852	1 020	1 161	126.5	125.2
Owner-occupied flats						
All Denmark	25 308	19 341	1 453	1 764	142.7	124.6
Copenhagen Municipality	6 490	4 498	1 841	2 388	150.5	121.7
Frederiksberg Municipality	1 412	921	2 337	2 964	148.2	129.1
Copenhagen County	4 389	3 045	1 581	2 009	138.9	129.2
Frederiksborg County	1 589	1 371	1 525	1 852	136.0	131.6
Roskilde County	1 029	725	1 359	1 723	138.2	125.9
West Zealand County	612	676	926	1 107	128.9	117.1
Storstrøm County	581	527	773	931	128.5	116.8
Bornholm County	123	103	597	712	132.9	133.4
Funen County	1 235	962	856	1 161	136.1	130.3
South Jutland County	300	294	816	1 036	118.4	122.5
Ribe County	586	401	720	838	128.3	126.9
Vejle County	924	786	844	1 206	131.6	122.7
Ringkøbing County	588	519	748	840	122.5	118.0
Århus County	3 545	2 656	1 269	1 411	148.2	119.2
Viborg County	304	247	696	906	116.5	121.2
North Jutland County	1 601	1 610	882	1 099	126.6	128.9
Other properties:						
Residential properties with 2 flats	2 000	1 692	1 452	1 796	116.3	99.8
Residential properties with 3 flats	391	390	1 692	1 742	136.6	106.2
Residential properties with 4-8 flats	807	745	3 706	4 311	176.0	111.8
Residential properties with 9 flats and over	429	447	15 950	26 849	191.4	111.2
Residential and business properties	3 087	3 004	5 179	5 524	140.7	117.6
Business properties	1 856	1 842	9 407	9 391	125.1	115.8
Industrial properties and warehouses	1 377	1 567	6 968	10 148	112.3	108.1
Agricultural properties	4 875	4 192	160	197	131.0	123.1
Weekend cottages	11 610	8 900	1 140	1 344	156.3	122.8
Grounds under 2,000 m ²	12 279	11 894	284	484	147.2	130.9
Grounds over 2,000 m ²	2 508	2 623	81	106	157.9	120.0

Note: For land, average prices are per m², for agriculture, average prices are per hectare, and for other categories, prices are per item.

¹For 2005 is used 2004-tax assessment. For 2006 is used 2005-tax assessment.

Source: Central Tax Administration.

For further information visit www.statbank.dk/ejen8