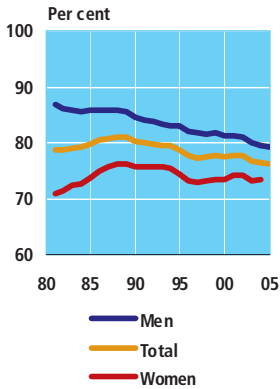


Labour market and earnings

1. The Danish labour market

Figure 1
Activity rate of
16-66-year-olds



Men and women's activity rate – the difference decreases

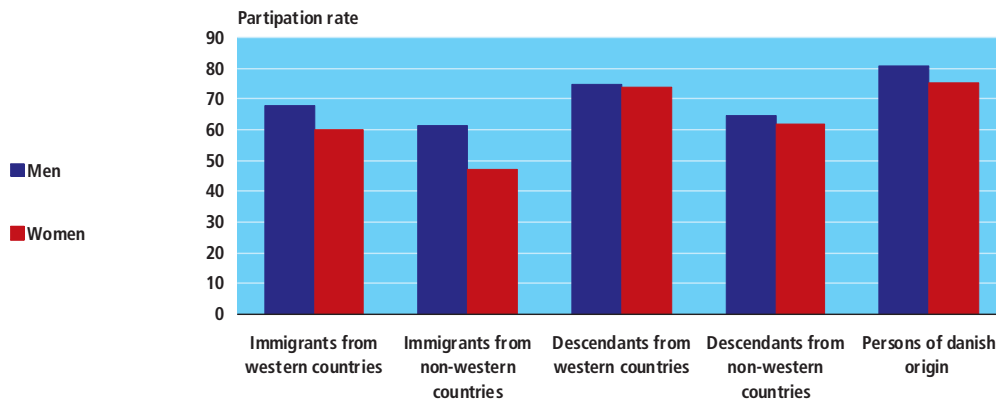
Labour market statistics are based on the basic concepts adopted by the International Labour Organization (ILO), according to which the population is divided into three groups: The employed and the unemployed (which together represent the labour force) and those outside the labour force. Developments from 1981 to 2005 show significant differences between men and women. The part of the population that is of working age (the 16-66-year-olds) has increased by 8.8 per cent for men and 7.9 per cent for women following the general population change. In contrast, the labour force as such has decreased by 0.5 per cent for men and increased by 11.3 per cent for women in the same period. In other words, there has primarily been an increase in the female part of the labour force.

Women's activity rate increased primarily in the 1980s, while that of men decreased. In the 1990s – when Denmark experienced an economic recession part of the time – the activity rate of both men and women decreased during most of the period. However, the fall in women's activity rate stopped in 1997, while the activity rate of men continued to fall. The activity rate is the labour force's proportion of the total population.

Immigrants and their descendants in the labour market

The number of immigrants and their descendants of working age has increased from 111,000 to 320,000 in the period 1981-2005. Especially, the number of immigrants and their descendants from non-western countries has increased. There were 37,000 immigrants and descendants from non-western countries aged 16-66 in 1981, while the figure was 215,000 in 2005.

Figure 2
Activity rate of immigrants and their descendants 2005



Immigrants' activity rate is lower than that of persons of Danish origin. Immigrants from non-western countries account for the lowest activity rate of

Labour market and earnings

54.4 per cent. Simultaneously, the difference between men and women's activity rate is relatively large.

Descendants from non-western countries have a higher activity rate (63.2 per cent) than immigrants, and the difference between men and women's activity rate is smaller than that of immigrants. The group of descendants of working age is still relatively small, and consequently caution should be exercised in interpreting the figures. Furthermore, most descendants of working age are between 16 and 30 years, implying that many attend an education and are subsequently not necessarily economically active.

2. Dependency ratio

The total dependency ratio has increased since 2002

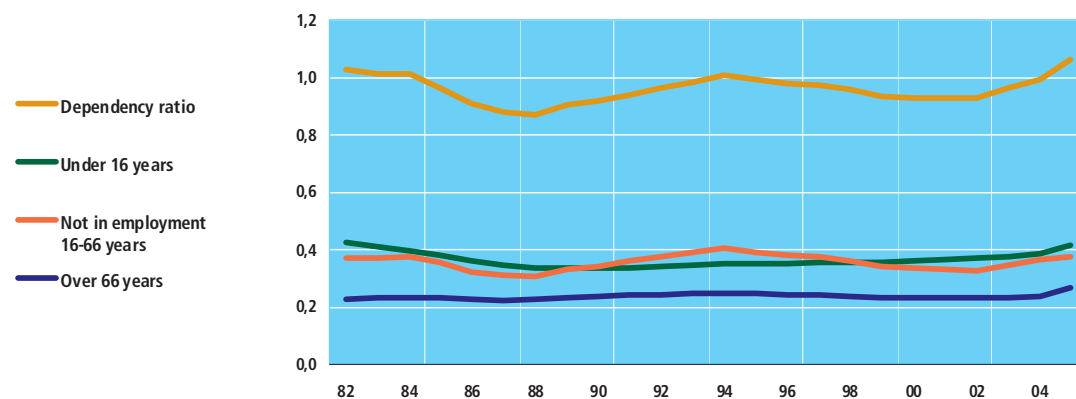
The total dependency ratio is the total number of persons not in employment in relation to the number of employed persons. In 1981, the dependency ratio was 1.01, whereas it was 1.06 in 2005, implying that while 100 persons in employment had to provide for 101 persons not in employment in 1981, they had to provide for 106 persons not in employment in 2005. The total dependency ratio has increased since 2002.

The dependency ratio for young and elderly people and for persons aged 16-66 not in employment

The population's age composition has a great impact on the dependency ratio. If the population comprises many young and elderly people, the dependency ratio will be relatively high as these age groups are most frequently economically inactive. The fall in the dependency ratio for young people under 16 in the 1980s was, consequently, caused by fewer children.

Figure 3

Dependency ratio



Note. The dependency ratio is estimated as the number of persons not in employment in the age group, divided by the total number of persons employed.

The number of persons not in employment who are of working age (between 16 and 66 years) compared to the number of persons employed peaked in 1994, subsequently decreased steadily, but has increased again from 2002, and

subsequently it follows unemployment developments. Several factors influence the dependency ratio for the population aged 16- 66. Changes in unemployment or in the extent of activation of the unemployed are of importance. Similarly, the labour market structures will influence the dependency ratio. It will, for example, increase if there is an increase in the number of young people enrolled for an education.

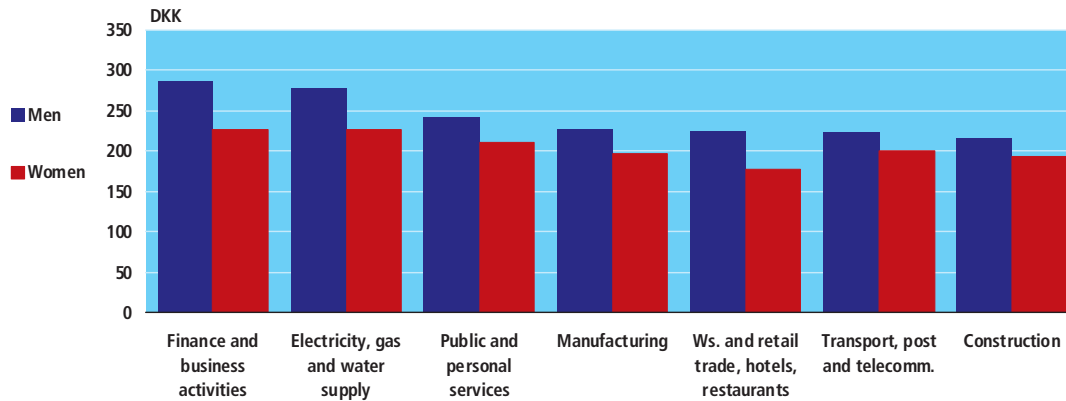
3. Pay and hourly earnings

Men in the financial sector account for the highest pay

Women earn less than men regardless of their business, even when employed in the same industry. The greatest difference between men and women's pay is seen in *finance and business activities* with 21.3 per cent and the smallest occurs in *transport, post and telecommunication* with 10.2 per cent. However, it is important to be careful in drawing firm conclusions from the gender distribution. There are great differences in the types of jobs men and women occupy in the different industries. The number of men employed in managerial positions is generally higher, compared to women. Earnings statistics illustrate what individual employees get out of making their labour available to employers. The main concept of earnings statistics is total earnings in relation to the number of hours worked, i.e. the hours spent at work by the employees.

Figure 4

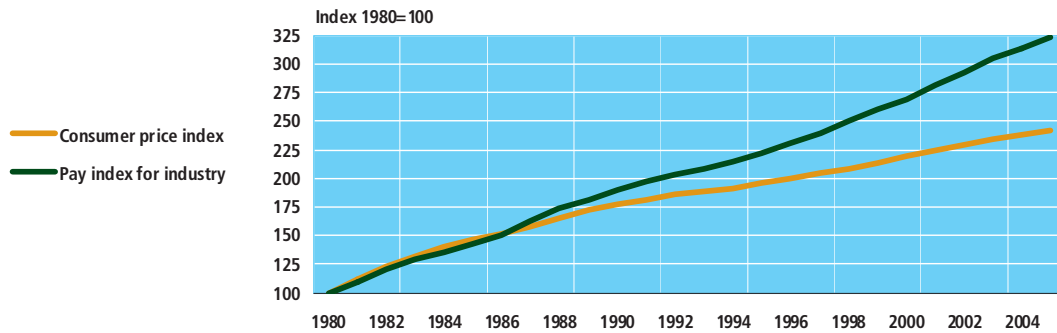
Hourly earnings for employees in the private sector 2004



Real earnings have increased in the past ten years

In the period up to the late 1980s, the development in earnings was more or less parallel to that of prices. In other words, real earnings remained more or less unchanged during the period. From the late 1980s until today, pay has increased more rapidly than prices. Consequently, this period has been characterized by relatively large increases in real earnings. This does not necessarily mean that all employees have experienced such a rapid increase in real earnings. In the same period, the structure of the labour market has changed so that today there are relatively more highly educated people than 20 years ago, which has an upward impact on the level of pay and thus on real earnings.

Figure 5 Pay index for industry and consumer price index



4. Unemployment and labour market policy measures

Two periods of unemployment peaks

Examination of unemployment developments from 1981 to 2005 reveals a curve with two marked peaks. These peaks are in 1983 and 1993-1994 between the two recoveries in employment that occurred in the mid-1980s and from 1994 onwards. Unemployment has been converted to full-time equivalents.

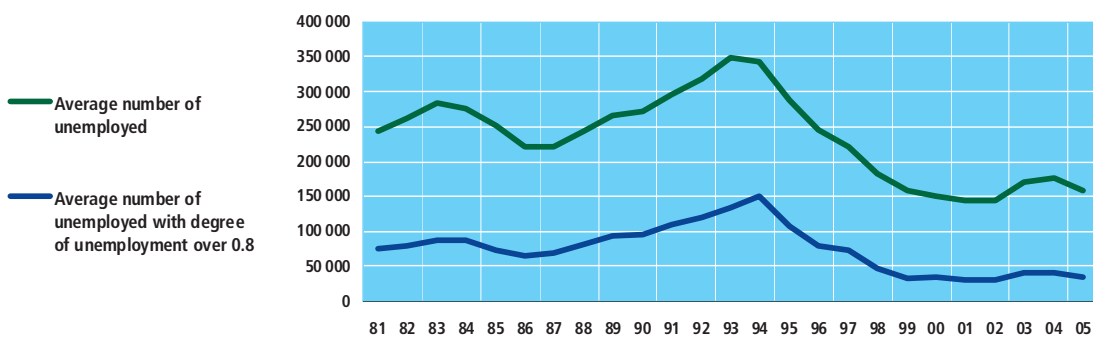
Drop in unemployment 1994-2002

Figure 6 shows total unemployment and unemployment for persons unemployed for more than 80 per cent of the year (long-term unemployed). The two curves clearly show the same development. The drop in unemployment from 1994 to 2002 is dramatic in that it has more than halved from 343,000 full-time unemployed in 1994 to almost 145,000 in 2002. Figures for the long-term unemployed have fallen to about one-fifth, from 150,000 full-time unemployed in 1994 to 31,000 in 2002.

Small peak in 2004

From 2002 to 2004, the number of full-time unemployed increased from 145,000 to 176,000, but in 2005 unemployment decreased again to 157,000.

Figure 6 Unemployment and long-term unemployment

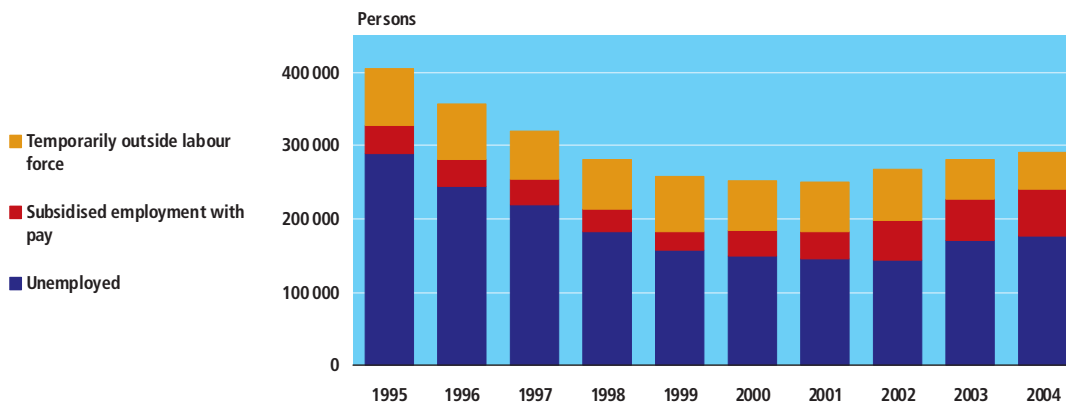


More persons on the fringe of the labour market since 2001

The development in the number of persons on the fringe of the labour market is shown in order to conduct an extended analysis of unemployment, converted to full-time (full-time participants). This group comprises the unemployed, persons in subsidized employment with pay and persons temporarily outside the labour force (subsidized employment without pay, educational and training measures, leave from unemployment, etc.). There has been a steady fall in the number of full-time participants on the fringe of the labour market from 406,000 in 1995 to 258,000 in 1999. This is primarily due to a marked decrease in the number of full-time unemployed, while the number of full-time persons in subsidized employment with pay or temporarily outside the labour force has remained more or less constant. The number of full-time participants on the fringe of the labour market has increased by 9,700 to 291,300 from 2003 to 2004. This development is due to an increase in unemployment and in the number of persons in subsidized employment with pay, but is counterbalanced by a decrease in the number of persons temporarily outside the labour force.

Figure 7

The fringe of the labour market

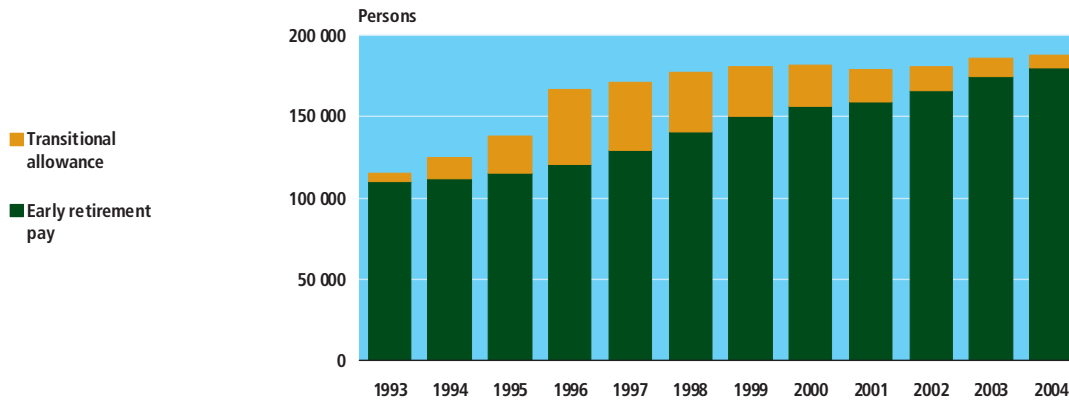


5. Retirement from the labour market

The decrease in the number of full-time participants on the fringe of the labour market from 1995 to 1999 is partly counterbalanced by an increase in the number of full-time participants who have left the labour force. The number of full-time participants receiving early retirement pay increased during this period, while the number of full-time participants receiving transitional allowances increased drastically until 1996, when the scheme was abolished. A contributory factor to the decline in the number of long-term unemployed since 1994 was that they could choose to leave the labour force and claim transitional allowances in the mid-1990s. The number of persons receiving early retirement pay has increased from 2003 to 2004 despite the lowering of the retirement age from 67 to 65 years for persons born on 1 July 1939 or later.

Figure 8

Retirement

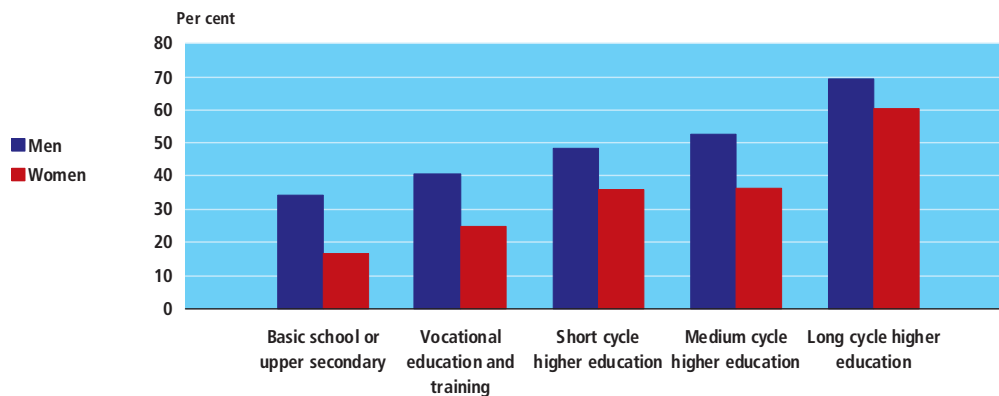


Level of education and retirement age

The level of education plays an important part when people decide to leave the labour force. A higher level of education means later retirement. Of the population aged 60-66 with a long-cycle higher education, 69 per cent of the men and 60 per cent of women were still in employment in 2005. The rate of employment among the population aged 60-66 years who had received only basic school education was only 34 per cent for men and 17 per cent for women.

Figure 9

Employment rate for 60-66-year-olds by level of education 2005



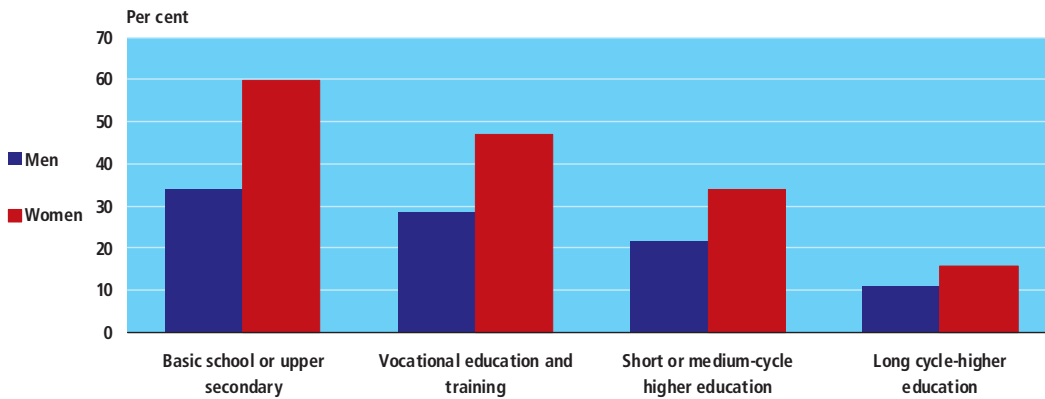
Early retirement

The level of education is also a factor of importance when deciding to leave the labour force to receive early retirement pay. Of the persons who had completed only basic school or upper secondary education, 48 per cent chose to use their right to retire on early retirement pay as 60-year-olds in 2003. In comparison, only 12 per cent of the 60-year-olds with a long-cycle higher education chose to receive early retirement pay in 2003. At all educational levels, there is a gender difference since more women chose early retirement pay as 60-year-olds. The difference is

greatest for the group that has no vocational training and education and smallest for persons having passed long-cycle higher education.

Figure 10

Persons receiving early retirement pay as 60-year-olds in 2003 by the highest level of education passed



6. A European perspective

EU employment goals

In coming years, the demographic dependency ratio in Denmark will increase as the proportion of elderly grows. The situation in the other EU countries is more or less the same and, consequently, it is the aim to increase the rates of employment for the economically active population until 2010. To this end, three goals have been set up:

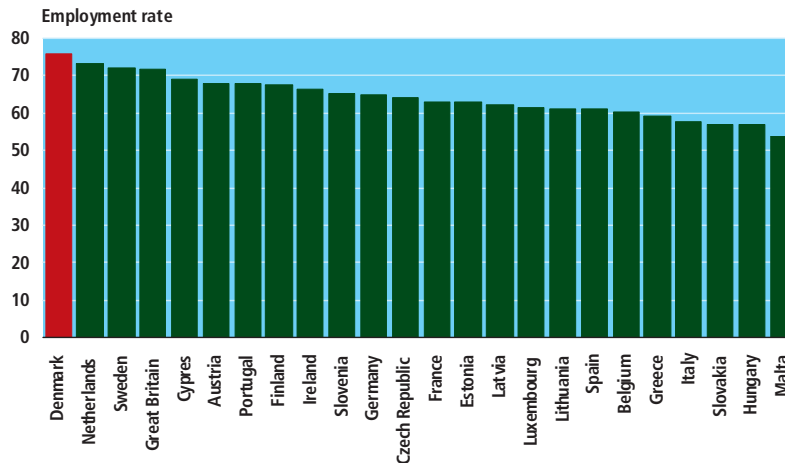
- 1) 70 per cent of the population aged 15-64 must be in employment
- 2) 60 per cent of women aged 15-64 must be in employment
- 3) 50 per cent of the elderly aged 55-64 must be in employment.

These goals apply to all EU countries, but further national goals may be determined in each EU country.

Denmark has the highest employment rate in Europe

Denmark's employment rate for all 15-64-year-olds of 75.7 per cent is the highest in EU and thereby Denmark – together with Sweden, the Netherlands and the UK – fulfils the objective of a 70 per cent employment rate.

Figure 11 Total employment rates in the EU, 2004

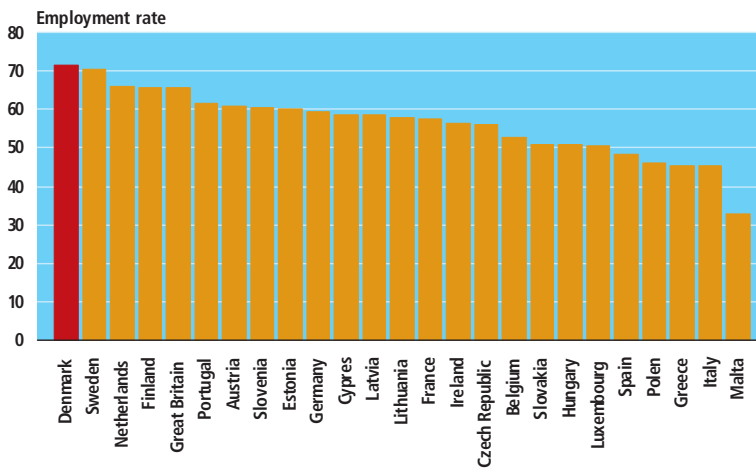


Source: Eurostat.

High participation rate of Danish women

In most EU countries, the participation rate of economically active men is already high. To increase the overall participation rate, it is therefore essential that the participation rate of more women and elderly is increased. Among the “old” EU countries, women’s participation rate in the labour market is very low in Italy, Greece and Spain. Among the “new” EU countries, women’s participation rate is especially low in Malta and Poland. The objective of a female employment rate of at least 60 per cent is already met today by Denmark, Sweden, the Netherlands, Finland, Great Britain, Portugal, Austria, Slovenia and Estonia.

Figure 12 Employment rates of women in the EU, 2004

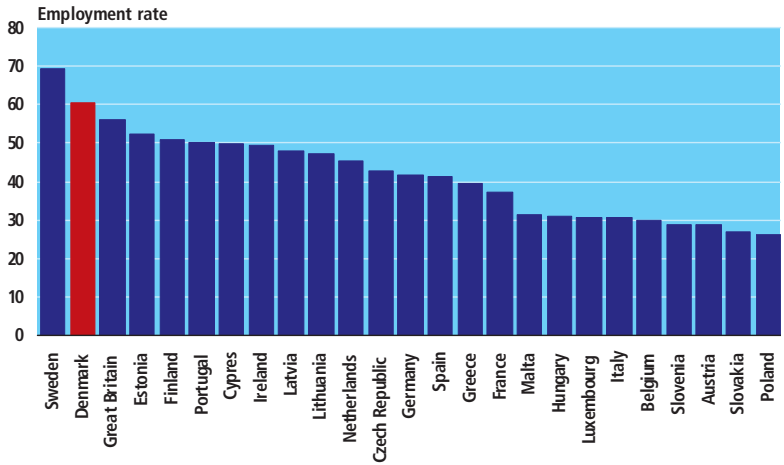


Source: Eurostat.

The elderly in Denmark also have high employment rates

In several new EU countries, the participation rate of the elderly is also very low. In four EU countries, the employment rate of persons aged 55-64 was lower than 30 per cent in 2004. The four countries are Poland, Slovakia, Austria and Slovenia. With 69 per cent, persons aged 55-64 in Sweden have by far the highest employment rate in the EU. With 60 per cent, Denmark accounts for the second-highest employment rate. In addition to Sweden and Denmark, the objective that 50 per cent of the persons aged 55-64 must be employed is already met today by Great Britain, Estonia, Finland and Portugal.

Figure 13 Employment rates of the elderly in the EU. 2004



Source: Eurostat.

Table 110

Population by industry in the censuses

	1834	1840	1845	1855	1860	1870	1880	1890	1901
	— thousands people —								
Total population	1 224	1 283	1 350	1 500	1 601	1 785	1 969	2 172	2 450
Agriculture	704	720	744	816	853	934	1 006	997	1 015
Fishing and shipping	34	35	37	40	45	47	54	59	73
Trades and industry	261	302	334	389	423	460	511	606	721
Trade and sales	51	56	60	78	95	121	152	214	277
Non-material activities	81	82	83	86	92	106	132	159	194
Property	48	48	52	58	58	69	81	92	113
Assistance	45	41	40	33	35	48	33	45	56
	— per cent —								
Total population	100	100	100	100	100	100	100	100	100
Agriculture	58	56	55	54	53	52	51	46	41
Fishing and shipping	3	3	3	3	3	3	3	3	3
Trades and industry	21	24	25	26	26	26	26	28	29
Trade and sales	4	4	4	5	6	7	8	10	11
Non-material activities	7	6	6	6	6	6	7	7	8
Property	4	4	4	4	4	4	4	4	5
Assistance	3	3	3	2	2	3	2	2	2

Note. Grouping by industry is per the census in 1890. Children living at home and married women, as well as people who are employed as domestic help are placed in the same industry group as the head of the household. The total population indicates the number of people in the region that belongs to Denmark proper at the time of the census. Due to rounding up/down, the totals are not precise.

Table 111

Population by industry in the censuses

	1901	1906	1911	1930	1940	1950	1960	1965	1970
	— thousands people —								
Total population	2 450	2 589	2 757	3 551	3 844	4 281	4 585	4 768	4 938
Agriculture, etc.	975	999	1 041	1 127	1 066	1 012	861	703	495
Manufacturing	721	737	788	1 091	1 285	1 492	1 674	1 776	1 758
Trade and sales	238	291	310	421	484	557	631	661	681
Transport	126	138	162	236	249	306	335	331	330
Administration and professions	118	135	141	223	268	363	480	605	770
Industry not stated	53	68	73	86	73	63	31	43	69
Pension, property, assistance	219	220	241	367	418	487	574	649	834
	— per cent —								
Total population	100	100	100	100	100	100	100	100	100
Agriculture, etc.	40	39	38	32	28	24	19	15	10
Manufacturing	29	28	29	31	33	35	37	37	36
Trade and sales	10	11	11	12	13	13	14	14	14
Transport	5	5	6	7	7	7	7	7	7
Administration and professions	5	5	5	6	7	8	10	13	16
Industry not stated	2	3	3	2	2	1	1	1	1
Pension, property, assistance	9	8	9	10	11	11	13	14	17

Note. Children living at home and married women with no commercial employment as well as domestic help are placed in the same industry group as the head of the household. Grouping by occupation is per the census in 1950. 1901–1911 is excl. North Schleswig. Due to rounding up/down, the totals are not precise.

Source: Lars Bugge Andersen, et al. *Erhvervsstrukturens udvikling i Danmark 1901–1976*. 1981.

Table 112

Employed persons by industry

	1981	1990	2000	2005
	thousands			
Total	2 552	2 674	2 759	2 710
Agriculture, fishing, quarrying	200	157	108	92
Manufacturing	481	504	464	401
Electricity, gas and water supply	16	19	16	14
Construction	180	167	168	170
Wholesale and retail trade, hotels, restaurants	436	461	503	489
Transport, post and telecommunications	179	182	183	171
Finance and business activities	176	282	344	382
Public and personal services	871	886	962	980
Activity not stated	12	15	11	12

For further information visit www.statbank.dk/ras9

Table 113

Employed persons, by sex, industry and socio-economic status 2005

	Self-employed persons	Assisting spouses	Salaried employees						Salaried employees total	Em-employment total
			Top managers	Upper levels	Intermediate levels	Basic levels	Other	Not further specified		
	thousands									
Males and females, total	187.9	8.5	66.5	330.2	440.9	1024.6	215.9	435.9	2 514.0	5 224.5
Agriculture, fishing, quarrying	40.4	3.7	0.2	1.0	1.1	15.3	1.9	28.5	48.1	92.2
Manufacturing	9.3	0.5	13.4	25.8	47.3	210.6	29.6	64.1	390.7	400.5
Electricity, gas and water supply	0.8	0.0	0.3	1.9	3.2	4.7	1.4	2.0	13.6	14.4
Construction	18.2	0.6	3.9	3.2	7.2	95.4	15.9	25.1	150.7	169.5
Wholesale and retail trade, hotels, restaurants	40.2	2.0	14.4	12.2	55.4	188.6	40.0	136.4	446.9	489.1
Transport, post and telecommunications	9.8	0.4	2.4	6.8	23.8	75.1	8.8	44.0	160.9	171.1
Finance and business activities	33.0	0.8	9.3	58.6	79.7	82.4	48.5	69.8	348.3	382.0
Public and personal services	24.8	0.4	22.6	220.6	223.2	352.4	69.8	65.7	954.4	979.6
Activity not stated	11.4	0.1	0.0	0.0	0.0	0.1	0.0	0.3	0.5	12.0
Males, total	141.0	0.7	49.5	176.4	171.7	511.1	121.9	268.0	1 298.6	1 440.4
Agriculture, fishing, quarrying	36.6	0.1	0.2	0.8	0.8	11.8	1.4	20.9	35.8	72.5
Manufacturing	7.5	0.0	11.7	19.0	27.3	149.0	19.1	40.6	266.7	274.3
Electricity, gas and water supply	0.6	0.0	0.3	1.6	2.4	3.2	1.3	1.6	10.3	11.0
Construction	17.6	0.0	3.6	2.9	5.5	87.6	15.3	21.4	136.1	153.8
Wholesale and retail trade, hotels, restaurants	28.3	0.3	11.4	7.5	33.3	95.3	23.6	74.4	245.5	274.1
Transport, post and telecommunications	9.0	0.0	1.9	5.0	16.8	48.2	7.3	36.6	115.9	124.9
Finance and business activities	24.0	0.1	7.6	42.6	42.5	31.9	23.2	41.5	189.2	213.3
Public and personal services	10.9	0.1	12.9	97.0	43.2	84.1	30.7	30.8	298.7	309.6
Activity not stated	6.6	0.0	0.0	0.0	0.0	0.1	0.0	0.2	0.3	6.9
Females, total	46.9	7.8	17.0	153.9	269.2	513.5	94.0	167.8	1 215.4	1 270.1
Agriculture, fishing, quarrying	3.9	3.5	0.0	0.3	0.4	3.5	0.5	7.6	12.3	19.7
Manufacturing	1.8	0.5	1.7	6.8	19.9	61.6	10.4	23.5	124.0	126.2
Electricity, gas and water supply	0.1	0.0	0.0	0.3	0.9	1.5	0.1	0.4	3.2	3.4
Construction	0.6	0.6	0.3	0.4	1.7	7.9	0.6	3.7	14.5	15.7
Wholesale and retail trade, hotels, restaurants	11.9	1.7	3.0	4.7	22.1	93.3	16.4	62.0	201.4	215.0
Transport, post and telecommunications	0.8	0.4	0.4	1.8	6.9	26.9	1.5	7.4	45.0	46.2
Finance and business activities	9.0	0.7	1.8	16.0	37.2	50.6	25.3	28.2	159.1	168.7
Public and personal services	14.0	0.3	9.8	123.6	180.0	268.3	39.1	34.9	655.7	670.0
Activity not stated	4.8	0.1	0.0	0.0	0.0	0.0	0.0	0.1	0.2	5.1

For further information visit www.statbank.dk/ras9

Table 114 Employed population, by sex, region and industry 2005

	Agriculture, fishing, quarrying	Manufacturing	Electricity, gas and water supply	Construction	Wholesale and retail trade, hotels, restaurants	Transport, post and telecommunications	Finance and business activities	Public and personal services	Activity not stated	Total
	thousands									
Males and females, total	92.2	400.5	14.4	169.5	489.1	171.1	382.0	979.6	11.9	2 710.2
Copenhagen Municipality	0.8	17.0	1.1	9.4	45.7	19.7	55.5	111.9	1.2	262.0
Frederiksberg Municipality	0.1	3.4	0.2	1.2	7.7	3.2	12.0	20.9	0.3	49.1
Copenhagen County	1.4	28.7	1.8	16.1	57.4	24.5	63.3	113.1	1.4	307.7
Frederiksborg County	2.6	23.1	1.3	12.3	35.9	10.7	34.0	72.2	1.0	193.3
Roskilde County	2.0	14.4	0.7	9.2	25.2	8.9	22.2	44.0	0.5	127.1
West Zealand County	5.9	21.4	1.3	13.8	25.4	9.9	16.0	54.9	0.6	149.3
Storstrøm County	6.0	16.6	0.7	10.7	20.9	7.4	12.6	47.4	0.7	123.0
Bornholm Municipality ¹	1.2	2.4	0.1	1.2	3.5	1.3	1.3	7.9	0.0	18.9
Funen County	11.8	35.4	1.0	15.8	40.8	12.4	25.9	84.0	1.1	228.2
South Jutland County	7.3	25.8	0.6	7.3	21.9	7.7	11.4	39.7	0.6	122.4
Ribe County	7.1	23.3	0.7	8.2	19.9	7.4	10.2	36.3	0.4	113.5
Vejle County	6.3	38.1	0.9	11.9	35.7	12.2	20.5	56.1	0.7	182.5
Ringkøbing County	9.7	34.5	0.6	8.9	25.5	6.5	12.6	43.1	0.5	142.0
Århus County	9.7	49.6	1.4	18.6	61.0	21.1	46.2	123.2	1.4	332.2
Viborg County	8.4	28.8	0.7	7.9	18.9	4.8	10.3	38.8	0.5	119.1
North Jutland County	12.1	38.0	1.1	16.7	43.7	13.3	27.9	86.0	1.0	239.8
Males, total	72.5	274.3	11.0	153.8	274.1	124.9	213.3	309.6	6.8	1 440.3
Copenhagen Municipality	0.5	10.6	0.8	8.7	25.1	14.1	32.0	42.5	0.7	134.9
Frederiksberg Municipality	0.1	2.0	0.1	1.1	4.2	2.1	7.0	7.9	0.2	24.6
Copenhagen County	1.0	17.8	1.3	14.3	33.5	17.3	35.6	36.8	0.8	158.3
Frederiksborg County	2.0	14.1	1.0	11.2	20.9	7.7	19.8	22.8	0.6	100.0
Roskilde County	1.5	9.4	0.5	8.2	14.5	6.2	12.0	13.3	0.3	65.9
West Zealand County	4.6	14.6	1.0	12.7	14.6	7.3	8.7	16.2	0.4	80.2
Storstrøm County	4.8	11.6	0.6	9.9	11.6	5.6	6.8	14.8	0.4	66.1
Bornholm Municipality ¹	1.0	1.7	0.1	1.2	1.8	1.0	0.7	2.7	0.0	10.2
Funen County	8.1	26.0	0.8	14.4	22.2	9.5	14.4	25.8	0.6	121.8
South Jutland County	5.9	18.3	0.5	6.5	12.1	5.7	5.8	11.7	0.3	66.8
Ribe County	5.7	16.2	0.5	7.3	10.8	5.6	5.2	10.6	0.3	62.2
Vejle County	5.0	26.2	0.7	10.7	19.9	8.8	11.1	15.8	0.4	98.7
Ringkøbing County	7.9	24.2	0.5	8.1	13.9	4.8	6.6	12.1	0.3	78.4
Århus County	7.5	34.9	1.1	16.8	34.6	15.5	26.4	38.2	0.8	175.7
Viborg County	6.8	19.5	0.6	7.2	10.6	3.7	5.5	11.6	0.3	65.8
North Jutland County	10.1	27.3	0.9	15.4	23.8	9.8	15.9	26.8	0.6	130.5
Females, total	19.7	126.2	3.3	15.6	215.0	46.2	168.7	670.0	5.0	1 269.9
Copenhagen Municipality	0.2	6.4	0.3	0.7	20.6	5.6	23.5	69.4	0.5	127.1
Frederiksberg Municipality	0.0	1.4	0.1	0.1	3.5	1.1	5.1	13.0	0.2	24.5
Copenhagen County	0.4	11.0	0.5	1.8	23.9	7.2	27.7	76.3	0.7	149.4
Frederiksborg County	0.6	9.0	0.4	1.1	15.0	2.9	14.3	49.5	0.5	93.2
Roskilde County	0.5	5.1	0.2	1.0	10.6	2.7	10.2	30.7	0.2	61.2
West Zealand County	1.3	6.8	0.3	1.1	10.8	2.6	7.4	38.7	0.3	69.1
Storstrøm County	1.2	5.0	0.1	0.8	9.2	1.8	5.8	32.6	0.3	56.9
Bornholm Municipality ¹	0.2	0.7	0.0	0.0	1.7	0.4	0.6	5.2	0.0	8.7
Funen County	3.6	9.4	0.2	1.5	18.7	2.9	11.5	58.2	0.5	106.4
South Jutland County	1.4	7.5	0.1	0.7	9.9	2.0	5.6	28.1	0.2	55.6
Ribe County	1.4	7.1	0.2	0.8	9.1	1.8	4.9	25.7	0.2	51.3
Vejle County	1.3	11.9	0.2	1.2	15.8	3.4	9.4	40.3	0.3	83.8
Ringkøbing County	1.8	10.3	0.1	0.8	11.6	1.7	6.1	31.0	0.2	63.6
Århus County	2.2	14.7	0.3	1.8	26.5	5.6	19.8	85.0	0.6	156.5
Viborg County	1.6	9.2	0.2	0.7	8.3	1.0	4.9	27.2	0.2	53.3
North Jutland County	2.1	10.7	0.2	1.3	19.9	3.5	12.0	59.2	0.4	109.3

¹ Incl. Christiansø.For further information visit www.statbank.dk/ras61

Table 115

Population, by sex, age, and socio-economic status 2005

	Labour force population				Total	Persons outside the labour force				Population Total
	Self-employed persons	Assisting spouses	Employees	Un-employed persons		Temporarily outside the labour force	Retirement pensioners	Pensioners	Other persons outside the labour force	
	thousands									
Males and females, total	187.9	8.5	2 514.0	134.6	2 845.0	104.8	178.4	903.8	1 379.4	5 411.4
16-66 years, total	165.4	7.7	2 451.7	134.6	2 759.4	104.8	178.4	254.0	321.4	3 618.7
Under 16 years	0.0	0.0	33.7	0.0	33.8	0.0	0.0	0.0	1 054.1	1 083.0
16-19 years	0.3	0.0	133.4	2.4	136.1	2.8	0.0	4.1	95.8	239.8
20-24 years	2.6	0.0	205.7	10.5	218.9	9.5	0.0	3.7	61.1	292.5
25-29 years	8.4	0.2	256.9	16.7	282.1	16.5	0.0	4.5	43.6	345.7
30-34 years	15.0	0.4	297.0	18.7	331.2	18.1	0.0	7.4	27.5	384.2
35-39 years	21.6	0.7	322.9	18.0	363.2	16.8	0.0	12.6	22.7	413.9
40-44 years	23.7	0.9	310.1	15.2	349.8	13.5	0.0	18.9	18.4	401.7
45-49 years	22.1	0.9	283.9	12.5	319.3	10.4	0.0	26.0	14.0	369.9
50-54 years	22.8	1.2	267.8	11.9	303.6	8.4	0.0	35.6	12.2	359.8
55-59 years	26.4	1.9	262.2	24.1	314.5	7.1	5.4	49.9	12.5	389.0
60-66 years	22.6	1.5	112.0	4.5	140.7	1.6	172.9	91.4	13.5	422.2
67 years +	22.5	0.8	28.6	0.0	51.9	0.0	0.0	649.8	4.0	709.7
Males, total	141.0	0.7	1 298.6	66.2	1 506.5	39.5	78.7	366.6	686.0	2 677.3
Males 16-66 years, total	122.3	0.7	1 259.7	66.2	1 448.8	39.5	78.7	111.8	145.9	1 825.2
Under 16 years	0.0	0.0	19.0	0.0	19.1	0.0	0.0	0.0	538.5	555.1
16-19 years	0.2	0.0	69.0	1.2	70.4	1.5	0.0	2.3	48.6	123.1
20-24 years	2.1	0.0	106.4	5.6	114.0	3.9	0.0	2.0	28.2	147.9
25-29 years	6.3	0.0	133.4	8.0	147.7	5.3	0.0	2.5	18.6	173.7
30-34 years	10.9	0.0	153.8	8.3	173.1	5.5	0.0	3.9	11.2	193.5
35-39 years	15.6	0.1	165.6	8.2	189.4	5.5	0.0	6.5	9.9	210.6
40-44 years	17.2	0.1	156.0	7.4	180.6	5.2	0.0	9.2	8.7	204.2
45-49 years	16.1	0.1	141.0	6.6	163.8	4.5	0.0	12.0	6.7	187.2
50-54 years	16.5	0.1	132.9	6.3	155.8	3.9	0.0	15.5	5.5	180.8
55-59 years	19.5	0.2	134.5	11.5	165.6	3.3	1.6	20.6	4.5	195.4
60-66 years	17.9	0.1	67.2	3.0	88.3	0.9	77.0	37.4	4.0	208.7
67 years +	18.7	0.1	19.8	0.0	38.6	0.0	0.0	254.8	1.6	297.0
Females, total	46.9	7.8	1 215.4	68.4	1 338.5	65.3	99.7	537.2	693.4	2 734.1
Females 16-66 years, total	43.1	7.0	1 192.0	68.4	1 310.6	65.3	99.7	142.2	175.5	1 793.5
Under 16 years	0.0	0.0	14.7	0.0	14.7	0.0	0.0	0.0	515.6	527.9
16-19 years	0.1	0.0	64.4	1.2	65.7	1.4	0.0	1.9	47.3	116.6
20-24 years	0.6	0.0	99.3	4.9	104.8	5.6	0.0	1.7	32.8	144.6
25-29 years	2.1	0.2	123.5	8.7	134.4	11.2	0.0	1.9	25.0	172.0
30-34 years	4.1	0.4	143.3	10.4	158.1	12.6	0.0	3.5	16.4	190.6
35-39 years	5.9	0.7	157.3	9.9	173.8	11.3	0.0	6.2	12.7	203.3
40-44 years	6.5	0.8	154.1	7.7	169.1	8.4	0.0	9.7	9.7	197.5
45-49 years	6.0	0.8	142.8	5.9	155.5	5.9	0.0	14.0	7.3	182.7
50-54 years	6.3	1.1	134.9	5.6	147.8	4.4	0.0	20.1	6.7	179.0
55-59 years	6.9	1.7	127.7	12.6	148.9	3.8	3.8	29.2	7.9	193.6
60-66 years	4.7	1.4	44.8	1.6	52.4	0.7	95.9	54.0	9.6	213.4
67 years +	3.8	0.8	8.7	0.0	13.3	0.0	0.0	395.0	2.4	412.8

For further information visit www.statbank.dk/ras111

Table 116

Population by sex, region and socio-economic status 2005

	Labour force population				Total	Persons outside the labour force				Population Total
	Self-employed persons	Assisting spouses	Employees	Un-employed persons		Temporarily outside the labour force	Retirement pensioners	Pensioners	Other persons outside the labour force	
	thousands									
Males and females, total	187.9	8.5	2 514.0	134.6	2 845.0	104.8	178.4	903.8	1 379.4	5 411.4
Copenhagen Municipality	13.7	0.3	248.1	14.2	276.2	14.5	9.3	70.7	131.6	502.4
Frederiksberg Municipality	3.0	0.0	46.1	2.2	51.3	1.6	2.2	16.1	20.8	91.9
Copenhagen County	18.2	0.5	289.0	13.4	321.1	9.3	19.0	106.4	162.4	618.2
Frederiksborg County	14.2	0.4	178.6	6.7	200.0	5.1	12.3	59.2	99.2	375.7
Roskilde County	8.0	0.3	118.7	4.5	131.6	3.4	8.8	33.4	61.9	239.0
West Zealand County	11.5	0.6	137.3	8.1	157.4	5.2	10.9	55.2	76.1	304.8
Storstrøm County	10.4	0.5	112.1	6.3	129.3	5.6	11.1	54.9	61.3	262.1
Bornholm Municipality ¹	1.9	0.1	17.1	1.9	21.1	0.9	2.0	9.5	10.0	43.4
Funen County	15.9	0.8	211.5	12.8	241.0	9.4	17.1	88.8	120.3	476.6
South Jutland County	9.6	0.7	112.1	6.1	128.5	4.2	9.9	46.3	64.2	253.0
Ribe County	8.2	0.6	104.8	4.4	117.9	4.6	7.4	37.6	57.0	224.5
Vejle County	11.8	0.6	170.1	9.0	191.5	7.5	12.3	56.6	90.1	358.1
Ringkøbing County	11.5	0.8	129.8	5.6	147.7	5.0	9.4	43.4	69.2	274.6
Århus County	21.4	0.8	310.0	17.7	349.9	14.4	20.4	99.0	173.9	657.7
Viborg County	10.8	0.6	107.7	4.4	123.5	4.0	7.6	41.2	58.1	234.4
North Jutland County	17.8	1.0	221.1	17.3	257.1	10.1	18.8	85.7	123.4	495.1
Males, total	141.0	0.7	1 298.6	66.2	1 506.5	39.5	78.7	366.6	686.0	2 677.3
Copenhagen Municipality	9.8	0.0	125.1	7.8	142.8	6.2	4.4	27.8	65.9	247.0
Frederiksberg Municipality	2.0	0.0	22.6	1.1	25.7	0.6	0.8	5.7	10.2	43.1
Copenhagen County	12.9	0.1	145.4	6.9	165.2	3.5	7.9	42.0	81.3	300.0
Frederiksborg County	10.1	0.1	89.9	3.3	103.4	1.9	5.2	24.6	49.6	184.7
Roskilde County	5.9	0.0	60.0	2.2	68.1	1.2	3.8	13.9	31.2	118.3
West Zealand County	8.7	0.1	71.5	3.8	84.0	1.9	5.0	22.8	37.7	151.4
Storstrøm County	7.9	0.0	58.1	3.1	69.2	2.2	5.2	23.2	30.2	130.0
Bornholm Municipality ¹	1.5	0.0	8.8	0.9	11.2	0.3	0.9	4.0	5.0	21.4
Funen County	11.9	0.1	109.8	6.3	128.1	3.6	7.9	36.0	59.9	235.5
South Jutland County	7.5	0.0	59.3	2.8	69.6	1.5	4.5	19.0	31.7	126.2
Ribe County	6.3	0.0	55.9	2.0	64.2	1.7	3.2	15.2	28.2	112.5
Vejle County	9.0	0.0	89.7	4.1	102.8	2.7	5.3	23.0	44.8	178.6
Ringkøbing County	9.1	0.0	69.3	2.4	80.8	1.7	4.1	17.5	33.9	138.0
Århus County	16.0	0.1	159.7	8.7	184.4	5.4	8.9	40.0	86.3	325.0
Viborg County	8.7	0.0	57.1	2.1	67.9	1.4	3.3	16.6	28.9	118.1
North Jutland County	13.8	0.1	116.7	8.6	139.1	3.6	8.2	35.2	61.4	247.5
Females, total	46.9	7.8	1 215.4	68.4	1 338.5	65.3	99.7	537.2	693.4	2 734.1
Copenhagen Municipality	3.9	0.2	122.9	6.4	133.5	8.3	4.9	42.9	65.8	255.3
Frederiksberg Municipality	1.0	0.0	23.5	1.1	25.6	1.0	1.3	10.4	10.6	48.8
Copenhagen County	5.3	0.4	143.6	6.5	155.9	5.8	11.1	64.3	81.1	318.2
Frederiksborg County	4.1	0.4	88.7	3.3	96.6	3.2	7.1	34.6	49.6	191.0
Roskilde County	2.1	0.3	58.8	2.3	63.5	2.1	5.1	19.5	30.7	120.8
West Zealand County	2.8	0.5	65.8	4.3	73.4	3.3	5.9	32.4	38.4	153.4
Storstrøm County	2.5	0.4	54.0	3.2	60.1	3.4	5.9	31.7	31.1	132.2
Bornholm Municipality ¹	0.5	0.1	8.3	1.0	9.9	0.6	1.1	5.5	5.0	22.1
Funen County	4.0	0.7	101.7	6.5	112.9	5.8	9.2	52.8	60.5	241.1
South Jutland County	2.1	0.6	52.9	3.3	58.9	2.7	5.4	27.3	32.5	126.7
Ribe County	1.9	0.5	48.9	2.3	53.7	2.9	4.2	22.3	28.8	111.9
Vejle County	2.8	0.5	80.4	4.9	88.7	4.8	7.0	33.6	45.3	179.5
Ringkøbing County	2.3	0.7	60.5	3.3	66.9	3.3	5.3	25.9	35.3	136.6
Århus County	5.4	0.8	150.3	9.0	165.5	9.0	11.5	59.0	87.7	332.7
Viborg County	2.1	0.6	50.5	2.3	55.5	2.7	4.3	24.6	29.2	116.3
North Jutland County	4.0	0.9	104.4	8.7	118.0	6.5	10.6	50.4	62.0	247.6

¹ Incl. Christiansø.For further information visit www.statbank.dk/ras111

Table 117

Commuting to and from work in municipalities 2005

	Persons with place of work in the municipality			Employed persons resident in the municipality			Incoming commuters, net		
	Men	Women	Total	Men	Women	Total	Men	Women	Total
	persons								
Copenhagen	163 641	162 337	325 978	134 949	127 092	262 041	28 692	35 245	63 937
Århus	88 672	81 550	170 222	77 015	72 274	149 289	11 657	9 276	20 933
Odense	48 929	48 882	97 811	46 362	42 713	89 075	2 567	6 169	8 736
Aalborg	48 225	42 958	91 183	41 818	36 827	78 645	6 407	6 131	12 538
Frederiksberg	18 450	21 255	39 705	24 623	24 476	49 099	-6 173	-3 221	-9 394
Esbjerg	25 498	20 636	46 134	21 572	18 545	40 117	3 926	2 091	6 017
Gentofte	17 287	19 213	36 500	17 730	17 553	35 283	- 443	1 660	1 217
Kolding	19 620	17 844	37 464	17 384	15 432	32 816	2 236	2 412	4 648
Herning	19 058	16 014	35 072	16 707	14 100	30 807	2 351	1 914	4 265
Gladsaxe	18 760	15 789	34 549	15 599	14 784	30 383	3 161	1 005	4 166
Randers	16 371	16 365	32 736	15 880	13 902	29 782	491	2 463	2 954
Helsingør	11 348	11 255	22 603	15 334	14 333	29 667	-3 986	-3 078	-7 064
Horsens	16 320	14 310	30 630	15 731	13 314	29 045	589	996	1 585
Vejle	18 131	16 791	34 922	15 069	13 359	28 428	3 062	3 432	6 494
Silkeborg	14 051	13 163	27 214	14 960	13 441	28 401	- 909	- 278	-1 187
Roskilde	16 306	17 482	33 788	14 302	13 746	28 048	2 004	3 736	5 740
Lyngby-Taarbæk	17 679	14 494	32 173	13 149	12 442	25 591	4 530	2 052	6 582
Greve	9 025	7 764	16 789	13 041	12 305	25 346	-4 016	-4 541	-8 557
Hvidovre	13 948	12 062	26 010	12 800	11 948	24 748	1 148	114	1 262
Næstved	10 925	11 770	22 695	12 626	11 481	24 107	-1 701	289	-1 412
Fredericia	15 456	11 854	27 310	13 008	11 091	24 099	2 448	763	3 211
Høje Taastrup	17 506	13 504	31 010	12 330	11 028	23 358	5 176	2 476	7 652
Viborg	12 681	12 953	25 634	11 962	10 722	22 684	719	2 231	2 950
Ballerup	20 580	17 235	37 815	11 526	11 000	22 526	9 054	6 235	15 289
Holstebro	12 542	11 329	23 871	11 493	10 149	21 642	1 049	1 180	2 229
Køge	10 642	9 386	20 028	10 636	9 826	20 462	6	- 440	- 434
Tårnby	15 062	10 272	25 334	10 370	9 914	20 284	4 692	358	5 050
Svendborg	9 431	9 859	19 290	10 504	9 480	19 984	-1 073	379	- 694
Hillerød	11 036	13 506	24 542	9 867	9 643	19 510	1 169	3 863	5 032
Bornholm	10 051	8 831	18 882	10 206	8 884	19 090	- 155	- 53	- 208
Slagelse	10 354	9 909	20 263	9 387	8 476	17 863	967	1 433	2 400
Holbæk	8 059	9 007	17 066	9 272	8 543	17 815	-1 213	464	- 749
Rødovre	9 633	7 099	16 732	9 083	8 496	17 579	550	-1 397	- 847
Hjørring	9 261	8 750	18 011	9 185	8 066	17 251	76	684	760
Ringsted	8 680	6 637	15 317	8 513	7 402	15 915	167	- 765	- 598
Brøndby	14 337	8 810	23 147	8 293	7 564	15 857	6 044	1 246	7 290
Frederikshavn	9 368	7 717	17 085	8 526	7 228	15 754	842	489	1 331
Søllerød	8 233	6 810	15 043	7 936	7 496	15 432	297	- 686	- 389
Haderslev	7 331	6 921	14 252	8 203	7 040	15 243	- 872	- 119	- 991
Thisted	8 354	7 377	15 731	8 133	6 674	14 807	221	703	924
Skive	9 889	7 302	17 191	7 751	6 455	14 206	2 138	847	2 985
Sønderborg	7 983	8 573	16 556	7 461	6 683	14 144	522	1 890	2 412
Albertslund	12 728	7 583	20 311	7 239	6 517	13 756	5 489	1 066	6 555
Herlev	8 534	8 235	16 769	6 573	6 355	12 928	1 961	1 880	3 841
Allerød	7 952	5 243	13 195	6 531	6 219	12 750	1 421	- 976	445

Note. Municipalities are listed according to number of inhabitants and include all municipalities with more than 25,000 inhabitants.

For further information visit www.statbank.dk/pend3r

Table 118

Incoming and outgoing commuting to and from work in municipalities 2005

	Incoming commuters as percentage of persons with place of work in the municipality			Outgoing commuters as percentage of employed persons resident in the municipality		
	Men	Women	Total	Men	Women	Total
	per cent					
Copenhagen	53.3	49.5	51.4	43.4	35.5	39.6
Århus	30.4	23.3	27.0	19.9	13.4	16.7
Odense	29.9	26.1	28.0	26.1	15.4	21.0
Aalborg	31.8	26.3	29.2	21.3	14.0	17.9
Frederiksberg	74.4	73.4	73.8	80.8	76.9	78.9
Esbjerg	30.4	21.6	26.5	17.8	12.8	15.5
Gentofte	73.9	72.0	72.9	74.5	69.4	72.0
Kolding	40.3	32.9	36.8	32.6	22.4	27.8
Herning	33.7	29.4	31.8	24.4	19.9	22.3
Gladsaxe	77.9	70.5	74.5	73.4	68.5	71.0
Randers	40.2	35.8	38.0	38.3	24.4	31.8
Helsingør	32.3	24.4	28.4	49.9	40.6	45.4
Horsens	37.4	30.9	34.4	35.1	25.7	30.8
Vejle	48.7	43.4	46.2	38.2	28.9	33.9
Silkeborg	33.1	25.9	29.6	37.2	27.4	32.6
Roskilde	62.7	56.0	59.2	57.4	44.1	50.9
Lyngby-Taarbæk	78.1	72.1	75.4	70.6	67.4	69.0
Greve	62.5	49.3	56.4	74.1	68.0	71.1
Hvidovre	76.0	65.4	71.1	73.9	65.1	69.6
Næstved	37.5	34.2	35.8	45.9	32.5	39.5
Fredericia	41.8	30.1	36.7	30.8	25.3	28.3
Høje Taastrup	78.4	67.4	73.6	69.3	60.1	65.0
Viborg	38.5	36.2	37.3	34.8	23.0	29.2
Ballerup	82.3	73.9	78.5	68.4	59.1	63.9
Holstebro	35.6	30.0	32.9	29.7	21.9	26.0
Køge	55.3	44.8	50.4	55.3	47.3	51.5
Tårnby	73.9	65.0	70.3	62.1	63.8	62.9
Svendborg	28.8	26.6	27.7	36.1	23.6	30.2
Hillerød	63.7	61.5	62.5	59.5	46.0	52.8
Bornholm	4.7	2.5	3.7	6.2	3.1	4.7
Slagelse	50.5	43.6	47.1	45.4	34.1	40.0
Holbæk	43.1	40.3	41.6	50.5	37.1	44.1
Rødovre	78.0	66.6	73.2	76.7	72.1	74.5
Hjørring	35.7	32.1	34.0	35.1	26.4	31.0
Ringsted	52.1	41.9	47.7	51.2	47.9	49.7
Brøndby	86.3	76.3	82.5	76.4	72.4	74.5
Frederikshavn	32.6	23.1	28.3	25.9	17.9	22.2
Søllerød	75.5	70.8	73.3	74.5	73.5	74.0
Haderslev	33.1	29.9	31.5	40.2	31.1	36.0
Thisted	22.6	22.8	22.7	20.5	14.7	17.9
Skive	45.1	35.5	41.0	29.9	27.1	28.6
Sønderborg	44.4	42.5	43.4	40.5	26.2	33.8
Albertslund	85.2	71.6	80.1	74.0	66.9	70.6
Herlev	80.8	74.1	77.5	75.1	66.5	70.8
Allerød	76.8	62.1	71.0	71.7	68.1	69.9

Note. Municipalities are listed according to number of inhabitants and include all municipalities with more than 25,000 inhabitants.

For further information visit www.statbank.dk/pend4

Table 119

Employees by sex, sector and working time

	2004		2005	
	Men	Women	Men	Women
	persons			
Total¹	1 294 275	1 213 617	1 298 607	1 215 413
Full-time	1 127 981	1 009 947	1 131 567	1 012 747
Part-time	166 294	203 670	167 040	202 666
Private sector, total	988 256	594 207	992 481	591 970
Full-time	852 731	454 799	858 340	454 386
Part-time	135 525	139 408	134 141	137 584
Public sector, total	306 006	619 404	306 119	623 439
Full-time	275 237	555 142	273 220	558 357
Part-time	30 769	64 262	32 899	65 082
Public corporations, etc.	55 388	30 843	53 982	31 525
Full-time	51 803	27 770	49 789	28 135
Part-time	3 585	3 073	4 193	3 390
General government, total	250 618	588 561	252 137	591 914
Full-time	223 434	527 372	223 431	530 222
Part-time	27 184	61 189	28 706	61 692
Central government sector	97 132	78 610	97 056	79 483
Full-time	86 706	68 285	86 073	69 113
Part-time	10 426	10 325	10 983	10 370
Social security funds	895	1 692	897	1 662
Full-time	868	1 647	874	1 604
Part-time	27	45	23	58
Counties	46 335	144 642	47 117	145 055
Full-time	41 557	133 225	42 430	134 089
Part-time	4 778	11 417	4 687	10 966
Municipalities	106 256	363 617	107 067	365 714
Full-time	94 303	324 215	94 054	325 416
Part-time	11 953	39 402	13 013	40 298
Foreign sector	13	6	7	4
Full-time	13	6	7	4
Part-time	0	0	0	0

¹ Including not known and persons employed abroad.

For further information visit www.statbank.dk/rasoff1

Table 120

16-66-year-old persons analysed by ancestry and labour market attachment

	1997					2005				
	Population	Labour force	Persons employed	Activity rate	Employment rate	Population	Labour force	Persons employed	Activity rate	Employment rate
	persons		per cent		persons		per cent			
Total population	3 579 132	2 768 567	2 574 895	77	72	3 617 905	2 759 392	2 624 807	76	73
Immigrants from:	216 648	118 734	94 932	55	44	291 843	167 740	148 024	57	51
The Western World	83 525	54 921	48 972	66	59	95 579	61 065	57 506	64	60
The non-Western World	133 122	63 813	45 960	48	35	196 264	106 675	90 518	54	46
Bosnia-Herzegovina	12 031	1 865	1 234	16	10	14 930	8 543	7 489	57	50
Iraq	5 691	1 605	982	28	17	15 814	5 972	4 421	38	28
Iran	8 751	4 405	3 218	50	37	10 856	5 985	5 189	55	48
Yugoslavia (former)	10 196	5 769	4 445	57	44	12 427	7 503	6 602	60	53
Lebanon	8 568	2 665	1 598	31	19	11 737	4 444	3 347	38	29
Pakistan	8 231	4 725	3 119	57	38	13 470	7 457	6 449	55	48
Somalia	5 500	678	403	12	7	8 732	2 805	1 749	32	20
Turkey	24 252	14 544	9 416	60	39	36 293	22 615	19 040	62	52
Descendants	15 031	10 123	9 095	67	61	27 987	18 660	17 320	67	62
Persons of Danish origin	3 347 453	2 639 710	2 470 868	79	74	3 298 075	2 572 992	2 459 463	78	75

For further information visit www.statbank.dk/ras111

Table 121

Earnings by occupation. Private sector 2004

	Number employed	Per hour worked, all hourly-paid and fixed-salary workers					Per month, fixed-salary earners ¹	
		Earnings including nuisance bonus Average	Earnings excluding nuisance bonus			Number of fixed-salary earners	Earnings excluding nuisance bonus Average ²	
			Average	Lower quartile	Median			Upper quartile
— amount in DKK —								
Total	966 411	224.38	220.39	161.41	194.59	251.09	569 389	32 894
Men	586 454	236.51	231.59	168.27	201.05	265.43	327 412	35 823
Women	379 957	201.62	199.36	149.44	182.48	229.53	241 977	28 447
Legislators, senior officials and managers	46 341	351.87	351.32	230.06	310.81	431.42	45 884	48 015
Men	37 363	363.87	363.31	237.78	323.79	446.26	37 023	49 771
Women	8 978	295.40	294.89	201.25	260.27	353.47	8 861	39 760
Professionals	100 674	300.64	299.17	228.09	284.94	352.18	91 809	40 606
Men	66 880	312.98	311.37	240.14	298.46	363.65	62 838	42 457
Women	33 794	272.05	270.93	205.89	253.45	320.09	28 971	36 269
Technicians and associate professionals	187 658	256.70	254.63	195.27	237.51	294.41	172 740	34 528
Men	103 339	277.52	274.63	211.13	256.93	317.92	97 740	37 539
Women	84 319	227.15	226.25	180.91	214.52	257.19	75 000	30 227
Clerks	138 062	199.11	196.96	160.46	186.11	221.85	120 475	26 609
Men	50 592	203.98	200.23	158.49	183.17	227.57	42 378	27 437
Women	87 470	196.72	195.35	161.46	187.36	219.84	78 097	26 216
Service workers and shop and market sales workers	106 677	162.33	159.03	123.48	147.76	180.44	49 763	23 041
Men	37 690	172.69	168.67	128.80	158.47	195.35	18 736	24 945
Women	68 987	155.06	152.25	120.67	142.21	169.29	31 027	21 582
Skilled agricultural and fishery workers	2 076	174.20	172.00	148.59	167.83	187.11	1 124	24 644
Men	1 495	177.82	175.47	152.31	171.92	189.46	830	25 159
Women	581	163.70	161.95	138.43	154.24	175.92	294	22 972
Craft and related trades workers	121 413	202.17	197.04	172.05	189.82	215.50	28 226	28 402
Men	113 189	203.90	198.61	173.70	191.06	216.74	25 805	28 739
Women	8 224	176.09	173.37	147.08	167.28	190.65	2 421	24 649
Plant and machine operators and assemblers	119 914	185.75	175.65	150.06	168.24	191.36	24 519	26 217
Men	86 745	190.02	179.03	153.07	171.57	194.91	18 482	26 827
Women	33 169	172.75	165.33	143.67	158.44	177.96	6 037	24 065
Elementary occupations	141 162	172.35	167.11	139.92	161.46	185.84	33 706	23 728
Men	87 929	180.23	174.08	147.34	169.81	193.13	22 987	24 519
Women	53 233	154.42	151.27	131.47	144.13	163.93	10 719	21 725

Note. The table includes all employees excluding young people under 18 and trainees.

¹ Calculated for a working week of 37 hours. ² Earnings include contributions to pension schemes.

For further information visit www.statbank.dk/lon02

Table 122

Earnings by industry. Private sector 2004

	Number employed	Per hour worked, all hourly-paid and fixed-salary workers				Per month, fixed-salary earners ¹		
		Earnings including nuisance bonus Average	Earnings excluding nuisance bonus			Number of fixed-salary earners	Earnings excluding nuisance bonus Average ²	
			Average	Lower quartile	Median			Upper quartile
		amount in DDK						DKK
Total	966 411	224.38	220.39	161.41	194.59	251.09	569 389	32 894
Men	586 454	236.51	231.59	168.27	201.05	265.43	327 412	35 823
Women	379 957	201.62	199.36	149.44	182.48	229.53	241 977	28 447
Agriculture, fishing, quarrying ³	3 316	284.54	271.84	195.23	234.20	324.25	1 858	43 051
Men	2 910	289.16	275.37	196.53	235.26	333.07	1 490	44 898
Women	406	251.53	246.56	185.95	226.05	278.03	368	34 156
Manufacturing	253 161	217.15	210.62	162.72	187.66	230.64	115 196	33 394
Men	172 258	226.08	218.41	168.58	192.77	238.77	73 044	35 866
Women	80 903	196.80	192.86	151.85	174.57	213.09	42 152	28 916
Electricity, gas and water supply	4 666	265.47	259.10	199.05	232.19	295.55	4 570	35 437
Men	3 458	278.40	270.28	206.09	242.98	308.68	3 394	37 142
Women	1 208	227.14	225.95	184.35	209.75	246.17	1 176	30 413
Construction	75 262	215.25	211.69	176.37	197.05	229.83	16 987	33 592
Men	69 153	217.09	213.26	177.56	198.22	231.02	13 034	35 460
Women	6 109	194.28	193.81	159.56	183.34	213.03	3 953	26 929
Ws. and retail trade; hotels, restaurants	199 303	206.95	205.10	144.96	180.13	233.77	135 353	29 776
Men	110 598	224.86	222.75	157.78	193.75	256.61	76 356	32 723
Women	88 705	178.28	176.85	131.34	159.72	199.78	58 997	25 207
Transport, post and telecommunications	101 109	216.04	209.01	154.12	179.65	230.68	76 578	30 240
Men	65 511	223.23	215.12	153.82	180.24	236.46	45 686	32 498
Women	35 598	200.48	195.78	154.83	178.64	221.07	30 892	26 591
Finance and business activities	236 408	260.76	259.01	181.07	238.38	312.41	156 118	37 292
Men	122 940	286.94	284.66	195.72	267.76	346.76	87 483	41 118
Women	113 468	225.90	224.85	166.80	213.25	261.72	68 635	31 893
Finance and insurance	63 220	289.80	287.44	221.21	265.17	332.22	59 870	38 406
Men	29 476	325.38	322.33	249.63	304.80	374.98	27 948	43 489
Women	33 744	255.37	253.68	207.52	240.79	282.25	31 922	33 488
Letting and sale of real estate	20 118	212.99	211.99	164.72	188.49	229.80	15 101	29 435
Men	13 188	216.82	215.55	165.87	186.30	230.64	10 109	30 048
Women	6 930	204.49	204.11	160.33	194.01	228.74	4 992	28 098
Business activities	153 070	253.34	251.78	165.23	228.29	309.30	81 147	37 877
Men	80 276	282.84	280.71	189.87	264.07	343.91	49 426	41 931
Women	72 794	210.32	209.60	146.51	191.83	246.03	31 721	31 064
Public and personal services	88 935	224.04	222.42	164.21	203.39	254.93	60 413	31 184
Men	37 008	241.87	239.53	169.50	214.33	282.38	25 764	34 158
Women	51 927	210.42	209.36	160.87	197.66	239.03	34 649	28 912
Activity not stated	4 251	188.64	187.20	138.91	173.60	211.25	2 316	26 420
Men	2 618	198.15	196.52	150.40	179.16	222.46	1 161	28 329
Women	1 633	170.14	169.08	127.76	156.96	194.46	1 155	23 551

Note. The table includes all employees excluding young people under 18 and trainees.

¹ Calculated for a working week of 37 hours. ² Earnings include contributions to pension schemes. ³ Agriculture and fishing not included.

For further information www.statbank.dk/lon04

Table 123

Earnings by level of education. Private sector 2004

	Number employed	Per hour worked, all hourly-paid and fixed-salary workers					Per month, fixed-salary earners ¹	
		Earnings including nuisance bonus Average	Earnings excluding nuisance bonus			Number of fixed-salary earners	Earnings excluding nuisance bonus Average ²	
			Average	Lower quartile	Median			Upper quartile
amount in DKK							DKK	
Total	966 411	224.38	220.39	161.41	194.59	251.09	569 389	32 894
Men	586 454	236.51	231.59	168.27	201.05	265.43	327 412	35 823
Women	379 957	201.62	199.36	149.44	182.48	229.53	241 977	28 447
Basic school 8-10 grade	242 369	187.11	181.28	145.56	168.96	199.23	94 304	27 167
Men	141 088	195.12	188.05	152.03	174.29	204.34	49 872	28 992
Women	101 281	173.50	169.79	137.70	158.73	188.59	44 432	24 848
General upper secondary school	69 951	218.18	213.23	136.04	179.95	253.79	31 688	33 319
Men	33 699	243.13	236.85	147.83	195.73	290.09	17 369	36 992
Women	36 252	187.80	184.46	125.39	161.69	221.89	14 319	28 358
Vocational upper secondary school	33 660	212.83	209.95	145.52	185.91	244.14	20 695	30 744
Men	17 832	230.74	227.06	148.75	196.86	271.06	10 487	34 246
Women	15 828	192.16	190.22	142.00	178.45	221.20	10 208	27 001
Vocational education and training	392 843	214.86	210.86	166.14	193.13	234.85	238 672	30 366
Men	254 422	222.87	217.83	171.36	196.85	241.01	134 582	32 658
Women	138 421	197.64	195.86	154.33	183.85	223.00	104 090	27 001
Short-cycle higher education	58 452	238.43	236.16	182.63	219.97	269.31	49 488	32 797
Men	33 106	252.68	249.61	191.51	232.02	286.01	27 079	35 428
Women	25 346	217.60	216.50	173.36	203.33	246.06	22 409	29 279
Medium-cycle higher education	72 715	294.37	292.20	213.90	273.05	344.54	62 206	40 410
Men	46 793	315.97	313.55	234.12	294.74	364.78	42 422	43 583
Women	25 922	243.60	242.03	187.21	225.62	282.08	19 784	32 755
Bachelor	16 952	245.10	243.27	164.25	213.33	286.56	11 056	35 072
Men	7 969	279.53	277.12	172.40	243.00	343.76	5 288	40 849
Women	8 983	213.08	211.80	158.93	198.09	245.32	5 768	29 774
Long-cycle higher education	50 858	332.46	331.08	244.56	308.78	389.50	47 460	45 266
Men	32 978	349.96	348.42	257.93	324.86	409.94	31 002	47 986
Women	17 880	296.70	295.64	223.70	278.34	347.42	16 458	39 728
Phd-degree	2 484	367.71	367.13	297.28	348.03	415.85	2 429	49 800
Men	1 793	375.88	375.22	301.02	355.95	426.38	1 756	51 181
Women	691	344.97	344.64	284.24	333.23	383.43	673	45 949
Unknown	26 127	221.29	216.61	144.19	179.93	246.47	11 391	35 147
Men	16 774	233.66	228.15	150.23	186.53	262.63	7 555	37 952
Women	9 353	192.15	189.41	135.54	164.71	217.41	3 836	29 178

Note. The table includes all employees excluding young people under 18 and trainees.

¹ Calculated for a working week of 37 hours. ² Earnings include contributions to pension schemes.

For further information visit www.statbank.dk/lon01

Table 124

Earnings by occupation. Local government 2004

	Number employed	Per hour worked, all hourly-paid and fixed-salary workers					Per month, fixed-salary earners ¹	
		Earnings including nuisance bonus Average	Earnings excluding nuisance bonus			Number of fixed-salary earners	Earnings excluding nuisance bonus Average ²	
			Average	Lower quartile	Median			Upper quartile
— amount in DKK —							DKK	
Total	674 318	217.39	209.49	165.67	196.28	230.54	623 759	27 053
Men	155 338	240.89	232.63	178.32	215.26	257.63	142 882	30 950
Women	518 980	209.71	201.92	162.89	191.75	223.47	480 877	25 779
Legislators, senior officials and managers	17 033	310.40	307.33	229.41	272.73	336.48	17 004	41 475
Men	8 806	346.62	342.49	260.00	302.39	385.09	8 786	46 483
Women	8 227	270.75	268.85	218.60	240.57	285.81	8 218	35 994
Professionals	138 689	268.95	262.49	221.85	238.87	277.61	134 875	34 364
Men	52 957	283.43	274.53	225.22	246.21	293.67	51 197	36 588
Women	85 732	259.61	254.73	219.67	235.79	265.68	83 678	32 933
Technicians and associate professionals	188 680	219.83	211.66	185.23	202.83	223.75	184 225	26 515
Men	28 986	221.48	214.85	187.13	207.93	233.02	28 132	27 892
Women	159 694	219.51	211.03	184.92	201.98	222.10	156 093	26 247
Clerks	44 033	196.15	194.24	175.71	189.54	202.55	42 977	24 991
Men	3 736	192.58	191.04	173.55	190.55	204.81	3 456	25 641
Women	40 297	196.49	194.55	175.90	189.45	202.34	39 521	24 931
Service workers and shop and market sales workers	214 562	178.36	166.76	146.03	160.32	177.36	180 151	21 341
Men	29 728	176.37	163.81	133.89	155.73	184.22	22 376	21 125
Women	184 834	178.62	167.14	147.28	160.61	176.72	157 775	21 367
Skilled agricultural and fishery workers	1 546	204.07	197.57	176.66	192.71	211.08	1 541	25 769
Men	1 237	206.85	199.66	178.55	195.15	212.48	1 234	26 185
Women	309	190.71	187.50	161.71	185.88	199.91	307	23 761
Craft and related trades workers	4 896	216.75	206.28	185.35	199.24	218.00	4 824	26 604
Men	4 573	217.50	206.59	185.60	199.35	218.21	4 522	26 651
Women	323	202.22	200.18	180.03	195.57	213.95	302	25 676
Plant and machine operators and assemblers	659	210.51	201.43	172.45	191.53	221.25	650	24 967
Men	634	211.22	201.91	172.57	191.90	221.60	625	24 984
Women	25	25	..
Elementary occupations	58 751	171.81	165.79	145.91	160.42	177.85	52 730	21 619
Men	22 803	182.14	174.13	156.14	170.64	186.74	20 966	23 090
Women	35 948	162.55	158.32	141.55	152.37	166.34	31 764	20 276

Note. The table includes all employees excluding young people under 18 and trainees.

¹ Calculated for a working week of 37 hours. ² Earnings include contributions to pension schemes.

For further information visit www.statbank.dk/lon42

Table 125

Earnings by industry. Local government 2004

	Number employed	Per hour worked, all hourly-paid and fixed-salary workers					Per month, fixed-salary earners ¹	
		Earnings including nuisance bonus Average	Earnings excluding nuisance bonus			Number of fixed-salary earners	Earnings excluding nuisance bonus Average ²	
			Average	Lower quartile	Median			Upper quartile
amount in DKK							DKK	
Total	674 318	217.39	209.49	165.67	196.28	230.54	623 759	27 053
Men	155 338	240.89	232.63	178.32	215.26	257.63	142 882	30 950
Women	518 980	209.71	201.92	162.89	191.75	223.47	480 877	25 779
Public administration	69 166	234.27	232.97	189.94	212.41	255.77	68 007	30 882
Men	21 706	265.30	263.01	206.36	243.66	292.67	21 318	35 542
Women	47 460	218.73	217.94	185.72	203.63	232.71	46 689	28 551
Education	114 071	234.79	231.33	202.11	228.18	248.08	109 103	30 463
Men	40 374	240.68	236.77	206.80	231.64	260.60	38 260	31 829
Women	73 697	231.30	228.12	200.12	226.22	243.41	70 843	29 658
Human health activities	137 107	255.89	239.49	187.10	211.56	247.10	131 611	29 517
Men	24 955	320.15	297.36	195.74	243.99	398.74	23 614	38 228
Women	112 152	240.35	225.50	185.83	208.37	235.87	107 997	27 431
Social institutions etc.	310 471	189.08	181.23	152.44	170.74	198.00	274 534	23 341
Men	44 334	193.98	187.05	149.36	180.32	211.80	36 911	24 591
Women	266 137	188.34	180.35	152.69	169.75	195.96	237 623	23 157
Associations, culture and refuse disposal	24 995	199.86	193.24	162.16	183.10	214.97	23 545	25 802
Men	15 426	199.98	191.24	162.19	180.04	207.92	14 737	25 541
Women	9 569	199.62	197.18	162.06	190.33	224.20	8 808	26 319
Other activity	18 508	200.43	193.30	153.66	177.92	210.25	16 959	25 624
Men	8 543	217.50	207.02	168.25	189.56	223.02	8 042	27 773
Women	9 965	182.82	179.13	146.68	160.98	196.25	8 917	23 363

Note. The table includes all employees excluding young people under 18 and trainees.

¹ Calculated for a working week of 37 hours. ² Earnings include contributions to pension schemes.

For further information visit www.statbank.dk/lon44

Table 126

Earnings by level of education. Local government 2004

	Number employed	Per hour worked, all hourly-paid and fixed-salary workers					Per month, fixed-salary earners ¹	
		Earnings including nuisance bonus Average	Earnings excluding nuisance bonus			Number of fixed-salary earners	Earnings excluding nuisance bonus Average ²	
			Average	Lower quartile	Median			Upper quartile
		amount in DKK					DKK	
Total	674 318	217.39	209.49	165.67	196.28	230.54	623 759	27 053
Men	155 338	240.89	232.63	178.32	215.26	257.63	142 882	30 950
Women	518 980	209.71	201.92	162.89	191.75	223.47	480 877	25 779
Basic school 8-10 grade	112 531	178.33	171.82	147.98	163.03	185.74	96 455	22 378
Men	25 892	190.24	182.00	152.88	173.46	198.37	22 101	23 951
Women	86 639	174.57	168.61	147.10	160.67	180.88	74 354	21 879
General upper secondary school	44 328	189.27	181.48	132.14	168.56	207.59	32 871	24 265
Men	12 351	204.20	196.27	134.65	178.73	226.76	9 334	26 759
Women	31 977	182.81	175.07	131.08	165.50	201.03	23 537	23 165
Vocational upper secondary school	9 174	181.78	176.96	134.79	172.09	202.42	7 002	23 754
Men	3 071	185.77	180.28	130.40	171.29	210.88	2 301	24 726
Women	6 103	179.79	175.30	137.95	172.33	198.90	4 701	23 276
Vocational education and training	202 129	194.56	185.56	156.82	175.77	200.64	190 546	23 828
Men	37 659	209.61	201.57	167.44	191.43	220.08	35 257	26 607
Women	164 470	190.66	181.43	155.24	172.28	195.89	155 289	23 111
Short-cycle higher education	15 791	212.06	206.65	174.64	199.36	223.91	14 700	26 527
Men	3 948	221.14	213.98	180.61	206.94	234.21	3 610	28 257
Women	11 843	208.89	204.09	172.99	197.01	220.16	11 090	25 930
Medium-cycle higher education	229 871	232.26	225.38	194.54	217.62	239.04	224 954	28 757
Men	45 131	242.06	237.18	206.23	229.88	253.32	44 095	31 471
Women	184 740	229.57	222.13	192.47	213.52	235.49	180 859	28 011
Bachelor	4 736	196.29	190.94	147.30	182.87	213.47	3 658	25 678
Men	1 701	199.33	193.44	144.67	185.92	222.38	1 287	26 924
Women	3 035	194.46	189.43	148.14	182.12	208.02	2 371	24 948
Long-cycle higher education	44 606	331.15	319.07	251.24	289.19	360.62	43 983	41 771
Men	21 676	353.57	337.88	263.39	298.76	416.27	21 405	44 878
Women	22 930	306.97	298.78	241.62	280.38	318.74	22 578	38 418
Phd-degree	1 949	400.98	379.70	294.52	371.12	449.51	1 919	48 986
Men	1 144	405.56	382.23	293.32	373.55	459.10	1 126	49 911
Women	805	393.54	375.59	295.74	366.50	436.57	793	47 479
Unknown	9 203	209.71	197.96	150.06	181.69	222.18	7 671	25 846
Men	2 765	230.58	217.21	159.17	192.86	240.98	2 366	28 718
Women	6 438	199.31	188.36	145.91	174.79	213.51	5 305	24 387

Note. The table includes all employees excluding young people under 18 and trainees.

¹ Calculated for a working week of 37 hours. ² Earnings include contributions to pension schemes.

For further information visit www.statbank.dk/lon41

Table 127

Earnings by occupation. Central government 2004

	Number employed	Per hour worked, hourly-paid and fixed-salary workers					Per month, fixed-salary earners ¹	
		Earnings including nuisance bonus Average	Earnings excluding nuisance bonus			Number of fixed-salary earners	Earnings excluding nuisance bonus Average ²	
			Average	Lower quartile	Median			Upper quartile
— amount in DKK —								
Total	195 011	239.12	233.59	183.16	217.78	266.21	188 713	31 906
Men	118 983	248.54	240.99	187.53	226.76	275.75	117 013	32 965
Women	76 028	224.45	222.08	177.92	205.43	252.16	71 700	30 198
Military services	33 949	225.96	214.44	169.65	195.54	238.97	33 930	29 164
Men	32 182	226.87	215.26	170.36	196.23	239.83	32 169	29 317
Women	1 767	208.74	198.98	158.27	180.97	216.31	1 761	26 276
Legislators, senior officials and managers	3 721	388.75	388.46	301.37	366.10	450.53	3 705	53 679
Men	2 568	402.85	402.53	311.30	377.09	466.48	2 558	55 734
Women	1 153	356.19	355.96	284.34	333.55	419.70	1 147	48 931
Professionals	60 511	279.52	277.84	234.82	266.73	304.37	60 172	38 042
Men	34 745	286.44	284.50	239.53	274.40	311.92	34 599	39 232
Women	25 766	269.32	268.01	228.00	257.17	292.38	25 573	36 285
Technicians and associate professionals	32 194	221.55	219.05	185.98	206.94	238.87	31 810	29 460
Men	12 760	243.35	238.80	200.59	229.80	258.17	12 574	32 502
Women	19 434	205.92	204.89	180.05	196.55	217.74	19 236	27 279
Clerks	22 286	189.69	187.31	167.73	182.44	200.12	20 813	25 024
Men	4 900	195.85	190.86	166.61	184.57	208.16	4 197	26 151
Women	17 386	188.02	186.35	168.00	181.96	198.39	16 616	24 726
Service workers and shop and market sales workers	16 352	217.29	201.66	171.74	198.27	229.06	16 133	26 931
Men	12 399	222.94	207.43	177.64	208.59	232.02	12 367	27 792
Women	3 953	196.22	180.13	154.57	172.86	195.20	3 766	23 656
Skilled agricultural and fishery workers	1 000	181.33	179.60	163.69	172.46	189.41	901	23 893
Men	795	180.21	178.44	163.22	171.16	188.16	739	23 745
Women	205	187.42	185.97	170.99	179.91	193.94	162	24 735
Craft and related trades workers	7 546	212.52	205.07	186.60	200.45	217.20	7 498	27 578
Men	7 161	212.71	204.92	186.69	200.53	217.20	7 122	27 600
Women	385	209.18	207.82	185.14	198.26	216.66	376	27 186
Plant and machine operators and assemblers	4 237	213.97	186.87	169.98	184.50	198.18	4 222	25 365
Men	3 933	214.18	186.49	170.17	184.31	197.64	3 920	25 354
Women	304	210.36	193.34	165.41	190.20	207.91	302	25 556
Elementary occupations	13 215	168.76	163.79	140.04	158.69	176.95	9 529	23 299
Men	7 540	181.05	173.91	155.45	167.78	185.04	6 768	23 734
Women	5 675	152.17	150.12	129.87	141.56	158.68	2 761	22 000

Note. The table includes all employees excluding young people under 18 and trainees.

¹ Calculated for a working week of 37 hours. ² Earnings include contributions to pension schemes.

For further information visit www.statbank.dk/lon32

Table 128

Earnings by industry. Central government 2004

	Number employed	Per hour worked, hourly-paid and fixed-salary workers					Per month, fixed-salary earners ¹	
		Earnings including nuisance bonus Average	Earnings excluding nuisance bonus			Number of fixed-salary earners	Earnings excluding nuisance bonus Average ²	
			Average	Lower quartile	Median			Upper quartile
amount in DKK								
Total	195 011	239.12	233.59	183.16	217.78	266.21	188 713	31 906
Men	118 983	248.54	240.99	187.53	226.76	275.75	117 013	32 965
Women	76 028	224.45	222.08	177.92	205.43	252.16	71 700	30 198
Agriculture, horticulture and forestry	860	205.81	204.81	164.78	178.22	239.31	803	27 506
Men	730	204.08	203.02	164.55	175.56	238.60	694	27 261
Women	130	219.53	219.01	172.06	189.32	257.20	109	29 473
Construction	1 463	224.74	200.87	169.64	188.17	213.72	1 453	27 586
Men	1 334	225.96	200.50	168.89	187.38	213.73	1 326	27 588
Women	129	209.01	205.66	180.66	195.21	212.47	127	27 572
Transport	9 829	229.78	213.07	167.89	195.00	232.10	9 752	28 832
Men	6 845	237.65	219.69	176.39	200.18	236.27	6 817	29 876
Women	2 984	210.30	196.67	148.66	176.67	217.42	2 935	26 232
Business activities	11 852	246.95	245.74	191.92	224.99	286.33	11 534	33 157
Men	5 721	263.32	261.69	201.37	243.13	304.18	5 628	35 682
Women	6 131	230.08	229.29	185.60	210.26	257.89	5 906	30 514
Public administration	103 715	236.69	230.52	181.06	210.68	255.74	103 059	31 052
Men	68 767	242.72	234.38	183.34	217.96	259.02	68 540	31 784
Women	34 948	225.44	223.29	177.91	201.40	247.84	34 519	29 678
Education	48 955	244.64	242.22	193.11	235.15	277.76	45 153	33 894
Men	25 594	262.56	259.53	213.85	247.26	293.22	24 589	35 996
Women	23 361	223.56	221.87	178.34	213.28	256.22	20 564	31 211
Social institutions etc.	1 169	215.52	209.94	173.40	196.82	228.29	947	28 578
Men	467	214.26	206.34	172.10	190.86	220.92	368	28 396
Women	702	216.38	212.40	176.68	200.48	233.36	579	28 701
Associations, culture and refuse disposal	5 153	241.81	240.77	195.17	235.93	279.28	4 660	33 411
Men	2 619	249.51	248.27	198.01	248.46	288.84	2 371	34 565
Women	2 534	233.00	232.18	191.95	224.20	264.97	2 289	32 070
Other activity ³	12 015	236.71	227.32	177.30	206.22	269.47	11 352	31 346
Men	6 906	246.64	233.36	178.15	211.21	283.53	6 680	32 184
Women	5 109	220.91	217.71	175.72	201.53	249.79	4 672	29 947

Note. The table includes all employees excluding young people under 18 and trainees.

¹ Calculated for a working week of 37 hours. ² Earnings include contributions to pension schemes. ³ Including wholesale and retail trade, financial mediation and insurance, real estate and renting activities, and health service, etc.

For further information visit www.statbank.dk/lon34

Table 129

Earnings by level of education. Central government 2004

	Number employed	Per hour worked, hourly-paid and fixed-salary workers					Per month, fixed-salary earners ¹	
		Earnings including nuisance bonus Average	Earnings excluding nuisance bonus			Number of fixed-salary earners	Earnings excluding nuisance bonus Average ²	
			Average	Lower quartile	Median			Upper quartile
amount in DKK								
Total	195 011	239.12	233.59	183.16	217.78	266.21	188 713	31 906
Men	118 983	248.54	240.99	187.53	226.76	275.75	117 013	32 965
Women	76 028	224.45	222.08	177.92	205.43	252.16	71 700	30 198
Basic school 8-10 grade	28 310	197.11	188.90	158.46	180.04	207.16	26 235	25 959
Men	18 098	205.52	194.67	163.11	182.90	211.66	17 751	26 442
Women	10 212	183.71	179.73	147.22	175.25	200.91	8 484	25 031
General upper secondary school	11 728	229.08	221.94	165.72	196.32	257.09	10 537	30 708
Men	7 740	233.61	225.47	166.43	196.56	263.78	7 197	31 187
Women	3 988	220.50	215.25	162.65	196.11	246.43	3 340	29 761
Vocational upper secondary school	4 420	196.79	189.84	160.17	178.58	205.63	4 204	25 703
Men	2 682	198.47	188.84	155.73	174.73	206.33	2 569	25 877
Women	1 738	194.64	191.13	165.48	181.75	205.41	1 635	25 477
Vocational education and training	62 068	206.90	200.32	173.94	192.97	217.68	60 832	27 020
Men	35 630	215.46	205.39	177.50	197.71	225.24	35 291	27 864
Women	26 438	195.40	193.51	170.32	187.34	207.71	25 541	25 855
Short-cycle higher education	21 313	231.92	223.55	191.77	219.61	242.40	21 115	30 014
Men	14 587	241.04	230.86	201.74	228.40	246.97	14 502	31 119
Women	6 726	210.52	206.41	180.52	197.31	220.14	6 613	27 410
Medium-cycle higher education	17 428	257.90	253.62	215.58	242.72	279.52	17 148	34 757
Men	10 726	270.29	264.61	224.99	253.18	292.81	10 634	36 432
Women	6 702	239.98	237.71	206.86	230.69	257.55	6 514	32 313
Bachelor	3 819	218.92	216.06	181.12	202.09	241.79	3 199	29 958
Men	1 811	228.85	224.96	182.94	217.75	253.41	1 542	31 675
Women	2 008	208.99	207.16	179.22	193.38	226.75	1 657	28 236
Long-cycle higher education	36 785	303.24	301.46	250.61	285.57	327.83	36 584	41 284
Men	21 530	314.04	311.77	258.81	293.58	342.84	21 437	43 008
Women	15 255	287.76	286.69	242.54	273.11	308.69	15 147	38 813
Phd-degree	4 820	312.75	312.60	271.07	297.24	332.03	4 808	42 875
Men	3 297	317.97	317.82	276.03	301.49	341.23	3 290	43 812
Women	1 523	300.49	300.36	262.89	287.79	315.24	1 518	40 675
Unknown	4 320	244.11	239.36	184.00	232.32	275.43	4 051	33 326
Men	2 882	256.43	250.58	191.21	241.54	293.44	2 800	34 639
Women	1 438	217.55	215.16	175.05	203.40	245.64	1 251	30 229

Note. The table includes all employees excluding young people under 18 and trainees.

¹ Calculated for a working week of 37 hours. ² Earnings include contributions to pension schemes.

For further information visit www.statbank.dk/lon31

Table 130 (continued) Membership of employees' trade unions 2006

Per 1 January	Number of members			Number of members	
	Total	Of whom women		Total	Of whom women
Danish Confederation of Trade Unions (LO)¹	1 338 731	651 162	Dansk Tandplejforening	895	876
Plumbers' Organisation in Denmark	8 851	28	Association of Actors and Theatrical Technicians	1 617	867
The Danish Artist Union	1 461	648	Danske Afspændingspædagoger	595	565
Danish Union of Electricians	30 016	269	Association of Medical Laboratory Technologists	5 318	5 069
Danish Hairdressers' and Beauticians' Union	5 438	5 171	Organisation of Danish Insurance Employees	6 835	4 655
Danish Railway Union	5 607	721	The Danish Physiotherapist Association	5 569	4 841
Danish Metal Workers' Union	138 948	6 833	The Danish Union of Production Schools	818	387
The Danish Federation of Salaried Employees	20 657	4 474	Efterskolernes Lærforening	2 604	1 284
Fagligt Fælles Forbund	350 444	113 751	Danish Association of Occupational Therapists	5 467	5 211
Danish Trade Union of Public Employees	206 476	181 529	Danish Pharmacopeia Commission	4 423	4 380
Wood Industry and Building Workers' Union	69 574	6 437	Danish Film and TV Workers' Union	711	235
Union of Commercial and Clerical Employees in Denmark	362 299	264 100	The Financial Services' Union ²	44 486	24 154
Union of Enlisted Privates and Corporals in the Danish Army	4 284	216	Foreningen af Mejeriledere og Funktionærer	532	64
Union of Painters in Denmark	13 475	3 348	The Radiographers' Union in Denmark	1 152	842
Danish Food and Allied Workers' Union	35 649	12 187	Formidlerne ⁴	653	591
Danish Restaurant and Brewery Workers' Union	21 973	13 717	Ass. of Teachers for Private Independent Schools	5 130	3 477
National Federation of Social Educators	33 856	25 392	Funktionærforeningen Carlsberg Tuborg	904	337
Spillerforening	690	29	Funktionærforeningen i FDB/COOP Danmarks	708	281
Danish Association of Professional Technicians	30 413	12 483	Halinspektørforeningen	588	35
			JID	1 196	349
			Jordmoderforeningen	1 395	1 390
			Karryere	2 982	1 660
			Danish Association of Constructing Architects	2 961	423
			Kort- og Landmålingsteknikernes Forening	586	176
Salaried Employees' and Civil Servants' Confederation (FTF)	363 094	246 883	Kost og Ernæringsforbundet	7 600	7 471
Federation of Early Childhood Teachers	54 258	46 521	Københavns Kommunale Embedsmandsforening	789	359
CO II – group in FTF	31 509	9 892	Federation of Teachers in Adult and Youth Edu.	4 348	2 909
Of which:			Lederforeningen i TeleDanmark	1 440	638
Danmarks Kordegnforening	583	357	LederForum	632	537
Dansk Kirkemusiker Forening	595	394	Civil Aviation Salaried Employees	1 200	804
Danish Federation of Technical Education	5 069	1 285	Association of Academy and Market Economists	1 457	801
Dansk Told- og Skatteforbund	5 241	2 859	Organisationen af Sergenter i Søværnet	683	24
Erhvervsskolelederne i Danmark	520	96	PROSA – Association of Computer Professionals	7 856	1 350
Foreningen af Præliminære Organister	620	326	SAFU Association of Salaried Employees	1 544	832
Association of Technical and Administrative Public Employees ²	1 069	553	Sergentgruppens Fællesorganisation – Hæren	2 252	59
Union of Public Servants within Armed Forces	1 597	290	National Teachers' Org. for Special Edu. of 1981	1 359	856
Association of Commercial College Teachers	1 713	799	Danish Navigators' Union	2 542	92
The Police Union in Denmark	12 149	2 065	Other unions	5 589	2 600
Trafikforbundet	757	219			
Other unions	1 593	649	Danish Association of Managers and Executives	73 897	15 275
Cabin Union Denmark	1 954	1 384	Danish Association of Managers and Executives	73 897	15 275
CS Danish Airforce	2 629	221			
The Danish Union of Teachers	64 728	44 089			
Danish Musicians' Union	3 000	600			
Danish Association of Social Workers	10 114	8 536			
Danish Nurses' Organisation	55 132	53 202			
Dansk Sø-Restaurationsforening	1 849	906			

Note. Figures are exclusive of Danmarks Frie Fagforening, due to lack of data reports.

¹ Incl. sleeping members (pensioners and people on early-retirement pay), conscripts, etc. ² Only employees. ³ Estimated figure for women.

Source: Main organizations and unions outside of the main organizations.

Table 130 (continued) **Membership of employees' trade unions 2006**

	Number of members			Number of members	
	Total	Of whom women		Total	Of whom women
Per 1 January					
Confederation of Professional Associations (AC)²	165 905	68 068	Outside joint organisations	172 717	67 722
Federation of Danish Architects	4 164	1 768	Brancheafdelingen Trafik & Jernbane ³	3 686	1 843
Danish Union of Librarians	4 409	3 397	Association of Permanent Defence Personnel	6 176	345
Association of Danish Lawyers and Economists	10 026	3 223	Danmarks Frie Fagforening	-	-
The Association of Food Scientists in Denmark and the Danish Veterinary Surgeons	1 600	814	Dansk Formands Forening	2 239	29
The Association of Pharmacists	2 708	2 085	Danish Prison Officers' Union	3 587	1 076
Forbundet af Kandidater fra Musikkonservatoriet	1 288	665	Danish Union of Journalists	10 943	4 266
Defence group in AC	3 868	155	Danish Union of Sales Representatives	23 166	3 522
National Union of Upper Secon. School Teachers	11 281	5 630	Fagforeningen Danmark ³	17 053	6 218
The Society of Danish Engineers	41 009	6 793	Forbundet af Kirke- og Kirkegårdsansatte	1 773	567
Danish Federation of Graduates in Agriculture, Horticulture, Forestry and Landscape Architecture	3 613	1 357	Forbundet for Tjenestemænd ved Fødevarer- og		
Jurist- og Økonomforbundet	27 906	12 801	Undervisningsministeriet m.fl.	551	68
Communications and Languages ⁷	5 575	5 232	Funktionærkartellet/Teknikersammenslutningen ³	18 756	8 984
Danish Association of Chartered Surveyors	796	154	Agricultural Technologists in Denmark	1 196	349
Danish Medical Association	14 015	5 761	Kristelig Fagforening	74 774	40 399
Danish Association of Masters and PhDs	24 035	12 538	Maskinmestrenes Forening	8 817	56
The Danish Association of Clergy	2 651	1 211			
Danish Psychologists' Association	3 870	2 825			
Association of Public Health Dentists in Denmark	2 387	1 403			
Other unions	704	255			

Table 131 **Members of unemployment insurance funds**

	2005 ¹	2006 ¹
Number of funds	33	31
Number insured against unemployment, total	2 330 959	2 285 257
Full-time insured	2 285 577	2 245 803
Of whom funds with: LO ²	1 197 076	1 150 672
FTF ³	363 827	361 500
Managers ⁴	83 671	81 997
AC ⁵	228 785	233 802
Other organizations ⁶	412 218	417 832
Part-time and combination-insured	45 382	39 454
Of whom funds with: LO ²	27 912	23 656
FTF ³	6 934	6 083
Managers ⁴	57	46
AC ⁵	889	813
Other organizations ⁶	9 590	8 856

¹ Figures are from 1 January. ² Danish Confederation of Trade Unions. ³ Salaried Employees' and Civil Servants' Confederation. ⁴ Danish Association of Management and Executives. ⁵ Danish Confederation of Professional Organisations. ⁶ Incl. unemployment insurance funds which are members of different confederations.

Source: The National Directorate of Labour.

Table 132

Unemployment benefits, early retirement pay and transitional allowance

	2004	2005
Average number of people receiving unemployment benefits	133 727	116 362
Unemployment benefits paid (excl. holiday pay), in DKK mio.	21 464,7	19 015,9
Benefits paid, DKK mio.	22 793,3	20 405,2
Early retirement pay paid, DKK mio.	24 436,2	22 756,2
Transitional allowances paid, DKK mio.	968,2	509,0
Net grants from central government: DKK mio.	35 448,9	30 891,2
Percentage of total paid	73.5	70.7

¹ Excl. tax-exempt premium paid out.

Source: The National Directorate of Labour.

Table 133

Recipients of unemployment benefits by reason for unemployment 2005

	Average number of recipients	Benefits paid, (excl. holiday pay), total	Average benefits paid
	Persons	DKK mio.	DKK
Total	116 363	18 925.8	162 644
Made redundant by employer	62 729	10 376.1	165 407
Temporarily sent home	509	84.7	166 418
Resigned	7 746	1 270.0	163 968
Certificate of release work sharing	839	135.3	161 313
School leaver or completed national service	6 616	925.1	139 827
Completed activation	16 975	2 754.0	162 220
Education, parental or maternity leave	3 614	579.0	160 232
Temporary absence from the labour market	2 076	333.5	160 606
Stopped self-employment	4 245	683.2	160 959
Other	10 368	1 681.6	162 172
Reason for unemployment unknown	645	103.7	160 810

Table 134

Unemployed persons, and unemployed persons as a percentage of the labour force 2005

	Unemployed persons			Unemployed persons as percentage of the labour force		
	Men	Women	Total	Men	Women	Total
	number of persons			per cent		
Total	72 904	84 532	157 436	5.0	6.4	5.7
16-17 years	7	5	12	0.0	0.0	0.0
18-19 years	810	773	1 584	2.2	2.2	2.2
20-24 years	5 150	4 898	10 048	4.5	4.6	4.5
25-29 years	8 498	10 224	18 721	5.6	7.3	6.4
30-34 years	9 532	13 476	23 007	5.5	8.5	6.9
35-39 years	9 027	12 390	21 417	4.6	7.0	5.8
40-44 years	8 538	10 372	18 910	4.8	6.3	5.5
45-49 years	7 342	7 721	15 064	4.5	5.0	4.7
50-54 years	7 113	7 047	14 161	4.5	4.7	4.6
55-59 years	11 410	13 232	24 643	6.8	8.9	7.8
60-64 years	5 295	4 272	9 567	7.5	10.1	8.5
65-66 years	182	121	302	1.8	2.6	2.0

Note. The figures in the table are based on information for the relevant persons at the end of December.

For further information visit www.statbank.dk/ru122 and www.statbank.dk/ru121d and ru122

Table 135

Unemployed persons by sex, age and region 2005

	Men			Women			Men and women, total		
	Under 30 years	30 years +	Total	Under 30 years	30 years +	Total	Under 30 years	30 years +	Total
All Denmark¹	14 465	58 439	72 904	15 900	68 631	84 531	30 365	127 070	157 435
Copenhagen Municipality	1 833	7 455	9 288	1 778	6 521	8 299	3 611	13 976	17 587
Frederiksberg Municipality	256	1 109	1 365	240	1 137	1 377	496	2 246	2 742
Copenhagen County	1 506	6 003	7 509	1 353	6 372	7 725	2 859	12 375	15 234
Frederiksborg County	601	3 008	3 609	574	3 566	4 140	1 175	6 574	7 749
Roskilde County	412	1 989	2 401	407	2 443	2 850	819	4 432	5 251
West Zealand County	767	3 241	4 008	976	4 048	5 024	1 743	7 289	9 032
Storstrøm County	657	2 855	3 512	697	3 187	3 884	1 354	6 042	7 396
Bornholm Municipality	126	789	915	132	939	1 071	258	1 728	1 986
Funen County	1 336	5 755	7 091	1 527	6 632	8 159	2 863	12 387	15 250
South Jutland County	563	2 300	2 863	685	3 273	3 958	1 248	5 573	6 821
Ribe County	481	1 808	2 289	664	2 308	2 972	1 145	4 116	5 261
Vejle County	769	3 239	4 008	1 067	4 570	5 637	1 836	7 809	9 645
Ringkøbing County	483	2 115	2 598	733	3 366	4 099	1 216	5 481	6 697
Århus County	1 978	7 606	9 584	2 200	9 096	11 296	4 178	16 702	20 880
Viborg County	525	1 889	2 414	653	2 516	3 169	1 178	4 405	5 583
North Jutland County	2 156	7 216	9 372	2 200	8 624	10 824	4 356	15 840	20 196

¹ Including where region not known.

For further information visit www.statbank.dk/ru122

Table 136

Unemployed persons as a percentage of the labour force, by sex, age and region 2005

	Men			Women			Men and women, total		
	Under 30 years	30 years +	Total	Under 30 years	30 years +	Total	Under 30 years	30 years +	Total
All Denmark¹	4.4	5.2	5.0	5.2	6.8	6.5	4.8	6.0	5.7
Copenhagen Municipality	3.9	7.9	6.6	3.6	7.9	6.3	3.7	7.9	6.4
Frederiksberg Municipality	3.9	5.9	5.4	3.2	6.4	5.5	3.5	6.2	5.5
Copenhagen County	4.6	4.7	4.7	4.5	5.2	5.1	4.5	5.0	4.9
Frederiksborg County	3.6	3.6	3.6	3.7	4.5	4.4	3.7	4.1	4.0
Roskilde County	3.5	3.7	3.6	3.7	4.8	4.6	3.6	4.2	4.1
West Zealand County	4.6	5.1	5.0	6.7	7.1	7.0	5.6	6.0	5.9
Storstrøm County	5.1	5.4	5.3	6.2	6.7	6.6	5.6	6.0	5.9
Bornholm Municipality	6.8	9.0	8.6	8.1	11.7	11.1	7.5	10.2	9.8
Funen County	4.8	6.1	5.8	6.1	7.8	7.4	5.4	6.9	6.5
South Jutland County	4.0	4.4	4.3	5.7	7.2	6.9	4.8	5.7	5.5
Ribe County	3.4	3.9	3.7	5.6	5.7	5.7	4.4	4.7	4.6
Vejle County	3.4	4.3	4.1	5.4	6.8	6.5	4.3	5.5	5.2
Ringkøbing County	2.7	3.6	3.4	5.0	6.7	6.3	3.7	5.0	4.7
Århus County	4.5	5.7	5.4	5.3	7.5	7.0	4.9	6.6	6.1
Viborg County	3.7	3.8	3.8	5.7	5.9	5.9	4.6	4.8	4.7
North Jutland County	6.8	7.1	7.0	8.2	9.7	9.4	7.5	8.3	8.1

¹ Including where region not known.

For further information visit www.statbank.dk/aard and ru121d

Table 137

Unemployed persons as a percentage of the labour force, by insurance category 2005

	Unemployed persons			Unemployed as percentage of the labour force		
	Men	Women	Total	Men	Women	Total
	number of persons			per cent		
Total	72 904	84 532	157 436	5.0	6.5	5.7
Full-time insured persons	60 104	70 614	130 717	5.6	6.9	6.2
Part-time insured persons	152	1 979	2 131	10.8	6.6	6.8
Uninsured persons	12 649	11 939	24 588	3.3	4.7	3.9

For further information visit www.statbank.dk/ru122,ru121d and ru122a

Table 138

Unemployed persons by sex and country of origin 2005

	Unemployed persons		
	Men	Women	Total
	number of persons		
Total	72 904	84 532	157 436
Denmark	60 765	72 885	133 650
Rest of the world, total	12 104	11 624	23 727
Of which:			
Western country's	2 232	2 459	4 691
Non-western country's	9 872	9 164	19 036
EU countries (EU 25)	1 775	1 835	3 609
Of which			
Poland	235	471	706
United Kingdom	365	166	531
Sweden	207	346	553
Germany	414	362	776
Europe ekscl. EU 25, total	3 849	4 056	7 906
Of which			
Bosnia and Herzegovina	528	581	1 109
Yugoslavia (former)	515	459	975
Norway	161	323	485
Turkey	2 147	1 916	4 062
Africa, total	1 599	1 099	2 698
Of which			
Somalia	655	427	1 082
North America, total	126	108	235
South and Central America, total	168	236	404
Asia, total	4 428	4 175	8 602
Of which			
Iraq	978	634	1 612
Iran	539	336	875
Lebanon	625	499	1 124
Pakistan	588	568	1 156
Sri Lanka	267	326	593
Viet Nam	385	433	818
Oceania, total	31	20	51
Stateless	18	10	28
Unknown	109	85	194
Unknown country of origin	36	23	58

¹ The labour force from 2004.

For further information visit www.statbank.dk/ruie1

Table 139

Insured persons unemployed as a percentage of insured persons by sex and unemployment insurance fund 2005

	Insured persons unemployed			Rates of unemployment in per cent		
	Men	Women	Total	Men	Women	Total
Total	72 904	84 532	157 436	5.6	6.9	6.3
Academics (AAK)	1 568	2 060	3 628	4.9	5.4	5.2
Plumbers	338	2	340	4.4	8.6	4.4
Early Childhood Teachers & Youth Educators	376	2 295	2 670	4.7	4.7	4.7
Danish Employees (DLA)	870	850	1 721	4.5	6.0	5.2
Danish Health Organizations (DSA)	19	579	599	0.9	1.0	1.0
Danish Commercial Travellers	856	262	1 118	4.0	6.4	4.4
Electrical Trade	677	18	695	3.0	8.9	3.0
3F	17 114	12 490	29 604	8.7	13.4	10.2
Independent Employees (FFA)	340	847	1 187	4.6	6.2	5.6
Salaried Employees and Service Ind.	959	338	1 297	5.7	7.1	6.0
Salaried Employees and Public Servants (FTF-A)	2 547	4 581	7 128	4.5	5.3	5.0
Commercial and Clerical Employees (HK)	4 312	14 659	18 971	6.8	7.1	7.0
Engineers (IAK)	2 268	488	2 756	4.2	5.6	4.4
Computer Professionals (PROSA)	632	212	844	6.6	5.8	6.4
Journalism, Communications and Languages	544	1 077	1 621	8.0	9.1	8.7
The Christian Unemployment Fund	5 167	7 876	13 044	6.9	10.1	8.6
Managers and Executives	1 772	561	2 333	2.9	3.7	3.1
School teachers (DLF-A)	817	2 036	2 853	3.6	4.1	3.9
Masters (MA)	1 836	2 690	4 527	8.2	10.9	9.6
Painters and Maritime	446	201	648	6.3	7.1	6.5
Metal Workers	4 928	223	5 151	5.2	7.6	5.3
Danish Food and Allied Workers (NNF)	1 345	1 339	2 684	6.5	12.7	8.6
Public Employees (OAA) ¹	1 104	7 773	8 876	5.3	5.1	5.1
Assistants to Educators (PMF-A) ¹	11	24	35	10.2	8.6	9.0
Restaurant and Brewery Employees	842	1 358	2 200	15.0	14.7	14.8
Workers in Social Education (SLA)	373	1 356	1 729	4.6	5.5	5.3
Self-employed Persons (DANA)	909	593	1 503	3.9	5.4	4.4
Self-employed Persons (ASE)	2 781	2 646	5 427	3.2	6.2	4.2
Government Officials and Telecom. Workers (STA)	605	408	1 013	3.4	4.3	3.7
Technicians and Engineers	968	1 470	2 437	6.3	11.2	8.5
Wood, Industry and Building Workers (TIB)	2 059	617	2 676	4.8	11.4	5.5
Business Economists (CA)	870	663	1 534	5.0	5.7	5.3

Note. The number of insured persons is measured at the end of the year, excl. persons on transitional allowances and voluntary early-retirement pay.

¹ On 1 January 2006, OAA (and PMF-A merged. At the end of 2005, almost all members of PMF-A had, however, already been transferred to OAA.

For further information visit www.statbank.dk/ru122 and ru122a

Table 140

Average hours of work per week in main job 2005

	Usual hours			Actual hours		
	Men	Women	Total	Men	Woman	Total
Total	38.5	32.5	35.7	33.6	26.4	30.2
Age						
15-29 years	31.4	25.5	28.6	27.9	20.5	24.4
30-54 years	41.1	35.1	38.3	35.7	28.5	32.3
55-66 years	39.4	33.0	36.6	34.2	27.3	31.2
Industry						
Agriculture, fishing, quarrying	44.5	31.9	41.6	40.5	27.8	37.6
Manufacturing	38.5	34.1	37.2	33.5	27.6	31.7
Electricity, gas and water supply	39.0	36.9	38.5	35.8	27.9	33.9
Construction	40.2	32.9	39.5	34.5	27.2	33.8
Wholesale and retail trade, hotels and restaurant	36.3	28.4	32.8	32.4	24.1	28.7
Transport, storage and communication	41.4	34.5	39.5	36.3	27.2	33.7
Financial intermediation, business activities	39.5	33.8	36.9	34.8	27.1	31.4
Public and personal services	36.4	32.9	34.1	30.9	26.5	27.9
Activity not stated	33.8	25.9	30.8	34.0	16.0	27.3
Socio-economic status						
Self-employed	48.9	38.7	46.5	44.5	32.9	41.7
Assisting spouses	25.9	32.4	31.4	27.2	28.9	28.6
Salaried employees	37.2	32.2	34.8	32.2	26.1	29.2
Top managers	46.2	40.9	44.8	40.4	34.2	38.8
At upper level	39.3	36.2	37.9	33.3	28.3	31.1
At intermediate levels	38.7	34.1	35.9	33.9	27.3	29.9
At basic levels	36.9	31.2	34.1	31.8	25.7	28.9
Other employees	29.2	23.9	26.9	25.5	19.1	22.8

For further information visit www.statbank.dk/aku7, [aku8](http://www.statbank.dk/aku8) and [aku9](http://www.statbank.dk/aku9)

Table 141

Labour market policy measures 2004

	Men			Women			Total		
	Partici- pants total	Partici- pation rate	Full-time partici- pants	Partici- pants total	Partici- pation rate	Full-time partici- pants	Partici- pants total	Partici- pation rate	Full-time partici- pants
Total	220 712	0.542	119 696	259 040	0.574	148 592	479 752	0.559	268 289
Of which:									
Activation, state	56 321	0.243	13 695	72 064	0.289	20 824	128 385	0.269	34 519
Activation, local counsal ¹	54 748	0.314	17 189	51 972	0.322	16 753	106 720	0.318	33 942
Subsidized employment	41 287	0.355	14 669	44 696	0.363	16 210	85 983	0.359	30 879
Employment with wage subsidies	25 566	0.375	9 596	26 483	0.386	10 225	52 049	0.381	19 821
Business in-service training	17 389	0.233	4 046	17 451	0.234	4 090	34 840	0.234	8 136
Service jobs ²	1 091	0.936	1 021	2 046	0.924	1 890	3 137	0.928	2 911
Voluntary not paid activities	12	0.510	6	14	0.326	5	26	0.411	11
Leave	2 124	0.318	676	8 080	0.346	2 795	10 204	0.340	3 470
Parental leave ³	2 123	0.318	675	8 078	0.346	2 794	10 201	0.340	3 468
Educational leave ⁴	1	1.000	1	2	0.622	1	3	0.748	2
Education⁵	44 955	0.243	10 908	57 092	0.270	15 417	102 047	0.258	26 325
Adult education subsidies ⁶	56	0.212	12	234	0.180	42	290	0.186	54
Education with training allowance	32 003	0.171	5 467	42 364	0.246	10 419	74 367	0.214	15 885
Specially adapted educational activities	8 230	0.183	1 508	12 435	0.220	2 730	20 665	0.205	4 237
Intensive job-seeking ⁷	-	-	-	9	0.328	3	9	0.328	3
Adult apprenticeship support	5 514	0.711	3 922	3 370	0.660	2 224	8 884	0.692	6 146
Integration education	3 433	0.328	1 128	4 889	0.340	1 660	8 322	0.335	2 788
Course in understanding of the society	173	0.170	29	289	0.165	48	462	0.167	77
Danish lessons	3 128	0.320	1 000	4 551	0.327	1 488	7 679	0.324	2 488
Separately planned Danish lessons	353	0.277	98	360	0.345	124	713	0.312	222
Other measures	54 906	0.166	9 133	53 075	0.159	8 447	107 981	0.163	17 580
Specially adapted projects ⁸	27 625	0.234	6 458	22 313	0.241	5 386	49 938	0.237	11 844
Brief guidance and clarification activities	29 963	0.088	2 651	32 824	0.093	3 043	62 787	0.091	5 694
Experiments	47	0.485	23	56	0.325	18	103	0.398	41
Retirement	103 317	0.805	83 183	124 125	0.838	104 064	227 442	0.823	187 247
Transitional allowances ⁹	2 773	0.771	2 137	6 392	0.781	4 994	9 165	0.778	7 131
Early retirement pay ¹⁰	101 642	0.797	81 046	120 313	0.823	99 070	221 955	0.811	180 116

¹ Persons who are not entitled to claim unemployment benefits and who participate in local government activation. ² Access to service jobs was discontinued on 1 April 2002. ³ Can only be granted to children born or adopted before 27 March 2002. ⁴ Educational leave was withdrawn on the first of January 2001. Arrangement made before the date continues. ⁵ People on an education course with unemployment daily-cash benefits are counted as unemployed and therefore are not included in the figures. ⁶ Access to adult education subsidies was discontinued on 1 January 2001. ⁷ Intensive job-seeking was withdrawn on the first of July 2003. ⁸ Some municipalities including Copenhagen, applies specially adapted activation to introduction programmes for aliens and it includes integration allowance. ⁹ Transitional allowance is paid to persons, who were aged 50 years or over in 1996. This implies that the remaining number of persons will leave the scheme during the course of 2006. ¹⁰ The reduction of the pensionable age from 67 to 65 years for persons born after 1 July 1939 will, independently viewed, give rise to a fall in the number of persons receiving early retirement pay as from 3rd quarter 2004.

For further information visit www.statbank.dk/ab712

Table 142

Labour market policy measures by county 2004

	Men			Women			Total		
	Under 25 years	25 years +	Total	Under 25 years	25 years +	Total	Under 25 years	25 years +	Total
	average number of full-time participants								
All Denmark ¹	4 398	115 299	119 696	4 443	144 150	148 592	8 842	259 447	268 289
Copenhagen Municipality	431	9 250	9 682	375	9 195	9 570	806	18 447	19 252
Frederiksberg Municipality	27	1 371	1 398	29	1 887	1 915	56	3 257	3 313
Copenhagen County	433	11 328	11 760	368	14 984	15 351	801	26 310	27 111
Frederiksborg County	169	6 877	7 047	142	9 005	9 148	311	15 883	16 195
Roskilde County	126	4 957	5 084	114	6 466	6 580	240	11 424	11 664
West Zealand County	210	6 876	7 087	237	8 302	8 538	446	15 178	15 625
Storstrøm County	290	7 507	7 797	296	8 664	8 958	586	16 168	16 754
Bornholm Municipality	27	1 229	1 256	29	1 446	1 474	56	2 672	2 730
Funen County	449	11 512	11 960	445	13 444	13 891	895	24 956	25 851
South Jutland County	217	5 975	6 191	258	7 643	7 901	475	13 616	14 092
Ribe County	193	4 616	4 808	208	5 970	6 177	400	10 585	10 985
Vejle County	317	7 534	7 850	344	10 112	10 457	661	17 646	18 307
Ringkøbing County	214	5 763	5 977	244	7 555	7 799	458	13 318	13 776
Århus County	661	13 567	14 227	677	17 213	17 890	1 338	30 780	32 117
Viborg County	157	4 531	4 688	181	6 069	6 251	338	10 601	10 939
North Jutland County	480	11 970	12 449	496	15 802	16 296	975	27 771	28 745

¹ Incl. unspecified regions.

For further information visit www.statbank.dk/ab712

Table 143

Work stoppages 2005

	Work stoppages	Number of employees involved	Number of working days lost
	number		
Total	534	32 833	51 100
Agriculture, fishing and quarrying	0	0	0
Manufacturing, total	229	19 344	23 800
Manufacture of food, beverages and tobacco	52	4 143	8 600
Mfr. of textiles and leather	2	55	0
Mfr. of wood products, printing and publ.	28	993	1 100
Mfr. of chemicals and plastic products	21	779	700
Mfr. of other non-metallic mineral products	20	1 228	1 700
Mfr. of basic metals and fabricated products	93	11 325	10 700
Mfr. of furniture, manufacturing n.e.c.	13	821	1 000
Electricity, gas and water supply	0	0	0
Construction	63	1 665	3 000
Wholesale and retail trade	32	1 130	800
Hotels and restaurants	18	529	300
Transport	117	5 027	6 000
Counties and municipalities	31	3 060	15 000
Other	24	1 533	1 600
Activity not stated	20	545	600

Table 144

Total labour costs in the private sector by industry 2004

	Total labour costs	Other labour costs	Total earnings	Of which					
				Nuisance bonus	Sickness with pay etc.	Holiday allowances	Fringe benefits	Pension including ATP	Direct remuneration
DKK per hour									
Total	233.72	9.34	224.38	3.99	6.70	27.53	1.68	21.85	162.61
Manufacturing	224.49	7.34	217.15	6.53	6.83	26.16	1.38	20.93	155.32
Electricity, gas and water supply	275.63	10.16	265.47	6.37	6.98	31.82	1.19	31.51	187.59
Construction	222.90	7.65	215.25	3.56	4.91	28.17	1.19	20.28	157.13
Ws, and retail trade, hotels, restaurants	212.69	5.74	206.95	1.85	5.77	24.66	3.13	18.11	153.43
Transport, post and telecommunications	222.79	6.75	216.04	7.04	6.67	25.21	1.23	22.35	153.54
Finance and business activities	278.94	18.18	260.76	1.75	8.02	33.42	1.41	27.39	188.77
Finance and insurance	330.59	40.79	289.80	2.36	9.00	39.95	0.87	40.52	197.09
Letting and sale of real estate	222.76	9.78	212.99	0.99	7.01	27.24	1.30	20.06	156.40
Business activities	260.60	7.26	253.34	1.56	7.69	31.12	1.69	22.05	189.24
Personal services and social institutions	230.69	6.65	224.04	1.61	7.57	27.76	0.60	21.62	164.87

Note. The statistics exclude apprentices and young people below 18 years of age. Other labour costs are costs that cannot be characterized as employee's earnings. Examples are contributions to social schemes and funds, staff canteens, direct and indirect taxes calculated on the basis of the number of employees or total wage and salary costs. Total labour costs are calculated net of deductions for any subsidies, etc.

For further information www.statbank.dk/sao11 and sao21

Table 145

Total labour costs in the private sector by occupation 2004

	Total labour costs	Other labour costs	Total earnings	Of which					
				Nuisance bonus	Sickness with pay etc.	Holiday allowances	Fringe benefits	Pension including ATP	Direct remuneration
DKK per hour									
Total	233.72	9.34	224.38	3.99	6.70	27.53	1.68	21.85	162.61
Legislators, senior officials and managers	362.29	10.42	351.87	0.55	7.04	42.21	11.54	39.93	250.60
Professionals	310.41	9.77	300.64	1.46	9.01	36.88	1.84	30.24	221.19
Technicians and associate professionals	269.51	12.81	256.70	2.07	7.70	31.68	2.90	26.79	185.56
Clerks	213.13	14.02	199.11	2.15	7.56	24.86	0.43	19.99	144.12
Service workers and shop and market sales workers	166.44	4.11	162.33	3.30	4.72	19.34	0.41	12.29	122.26
Skilled agricultural and fishery workers	179.84	5.64	174.20	2.19	5.35	20.74	0.06	14.74	131.12
Craft and related trades workers	208.96	6.78	202.17	5.13	5.62	25.24	0.21	18.56	147.42
Plant and machine operators and assemblers	192.57	6.81	185.75	10.10	5.98	22.10	0.05	17.05	130.47
Elementary occupations	178.68	6.34	172.35	5.23	5.18	21.67	0.16	14.13	125.97

Note. The statistics exclude apprentices and young people below 18 years of age. Other labour costs are costs that cannot be characterized as employee's earnings. Examples are contributions to social schemes and funds, staff canteens, direct and indirect taxes calculated on the basis of the number of employees or total wage and salary costs. Total labour costs are calculated net of deductions for any subsidies, etc.

For further information www.statistikbanken.dk/sao31 og sao41