

## General business statistics

### 1. The Danish business structure

#### Continued importance of service sector

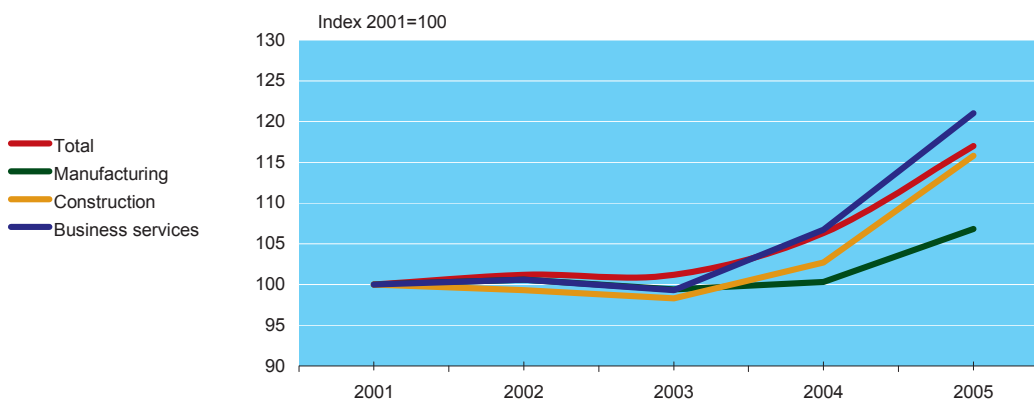
The Danish business structure has experienced enormous changes in recent decades. Denmark has gone from an agricultural and industrial society to a society where services are the dominant activity.

At the turn of the millennium, almost three-fourths of all employed persons were working in the service sector. Services include private services in the form of trade, transport, finance, business services and personal services as well as public services. The growth of the service sector has continued in the new millennium.

The development can be illustrated by a look at the enterprises' turnover figures during the period 2001-2005. The total growth in business turnover is 17 per cent in this period, but there are great differences from one industry to another. Business services have increased by 21 per cent, followed by construction (16 per cent), while the turnover of the manufacturing industry has increased by only 7 per cent.

Figure 1

Total turnover 2001-2005



#### Enterprises and workplaces

Business structures are described by using two business levels: enterprises and workplaces. The enterprise is the superior level, which is legally and financially responsible for the operation of the enterprise. A workplace is an organizationally delimited part of an enterprise at a given address, which produces one – or mainly one – type of goods or services. Thus, workplaces are the sites where the physical production of the goods or services takes place.

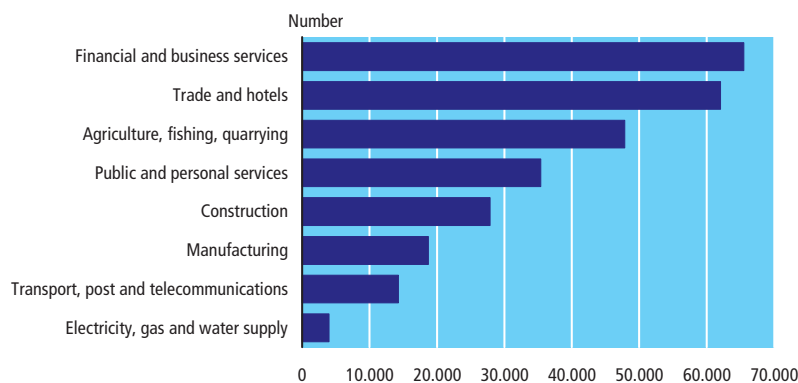
## General business statistics

### Number of enterprises

There are about 275,000 enterprises in Denmark with a real activity. Financial and business services account for most of these enterprises (24 per cent) as well as wholesale and retail trade, hotels, restaurants (23 per cent), while 7 per cent of the enterprises have their main activity in agriculture and fishing. Less than one in ten enterprises has its main activity in manufacturing, and the same is true of construction.

Figure 2

Enterprises by industry 2003

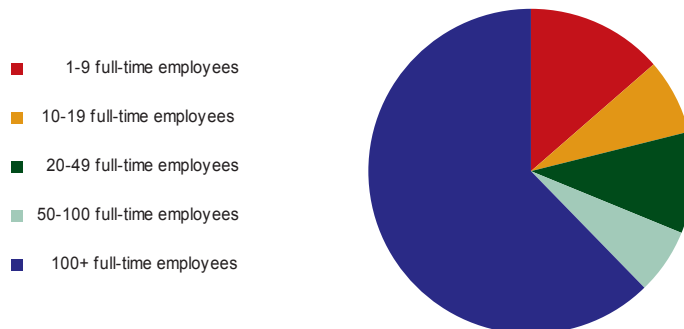


### Manufacturing accounts for the largest enterprises

The Danish business structure is characterized by many small enterprises with less than ten full-time employees (91 per cent). Nevertheless, more than 1.3 million full-time employees – or 62 per cent of all full-time employees – work in the largest enterprises with 100 or more full-time employees. The largest concentration is seen in manufacturing, where 63 per cent are employed in the largest enterprises, while this group accounts for only 21 per cent of the full-time employees in construction.

Figure 3

Number of full-time employees by enterprise size 2003



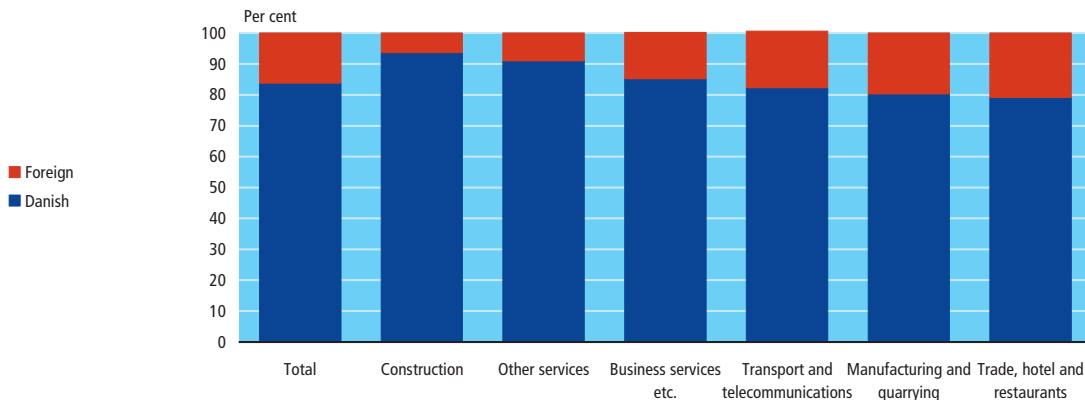
**Turnover and exports**

Danish enterprises had a total turnover of DKK 2,393 billion in 2003. Of this amount, exported goods and services accounted for DKK 573 billion. The remaining goods and services were sold in Denmark. Enterprises in manufacturing account directly for half of all sales of goods and services abroad. Processed goods from agriculture and fishing account for a considerable part of manufacturing exports. This fact, and the fact that unprocessed goods from these primary sectors are exported through trading enterprises, explains why exports directly from agriculture and fishing are very limited (DKK 808 million). Construction is primarily a domestic sector, where exports account for only about 1 per cent of total turnover.

**Foreign-owned enterprises in Denmark**

Foreign-owned enterprises account for almost 20 per cent of total turnover though they make up only 1 per cent of the total number of enterprises in the private sector in Denmark. These enterprises had a turnover of DKK 465 billion and had 228,000 employees (given as full-time employees) – corresponding to 16 per cent of the wage-earner employment in the private sector.

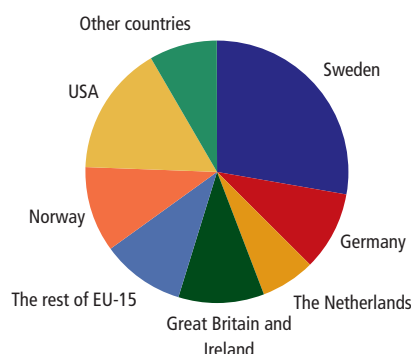
Foreign-owned enterprises employ a considerable part of those employed in all industries, especially in manufacturing and mining and quarrying as well as wholesale and retail trade, hotels, restaurants (about 20 per cent). In construction, foreign-owned enterprises have the smallest part of those employed (8 per cent).

**Figure 4****Employees by foreign and Danish enterprises 2003**

Enterprises owned by foreigners are on average far larger than enterprises owned by Danes. On average, there were 74 employees per enterprise in the foreign-owned enterprises in 2003, while there were four employees per enterprise in the Danish-owned enterprises.

Sweden and USA are the two countries with the largest share of total turnover, and enterprises owned by persons from these two countries account for 28 and 16 per cent, respectively, of the total turnover in foreign-owned enterprises in Denmark.

Figure 5 Foreign-owned enterprises by share of total turnover 2003

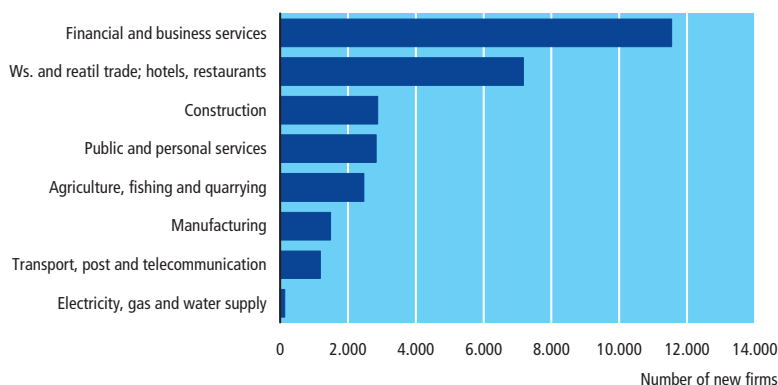


### More closed-down than new enterprises

New enterprises are an important factor in a dynamic business structure since they create economic growth by offering new jobs and renewing production processes and product innovation. In 2003, there were a little more than 29,700 new enterprises. Of these, almost 40 per cent were in financial and business services, while less than 10 per cent of the new enterprises were in manufacturing. In the beginning of the millennium, the Danish business sector was characterized by more closed-down enterprises than new ones. Only financial and business services saw a positive net growth in all the years 2001 to 2003, i.e. more new enterprises than closed-down ones.

Of the almost 30,000 new enterprises in 2001, 59 per cent had survived until 2003. The largest share of surviving enterprises is found in construction, where 68 per cent of the enterprises survived the first two years in business. The lowest share of surviving enterprises (45 per cent) is found among the new enterprises in agriculture and fishing.

Figure 6 New enterprises by industry 2003

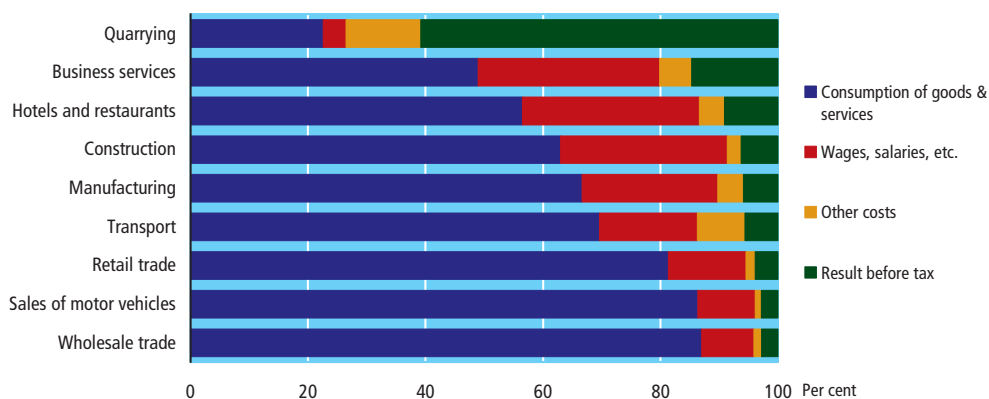


## 2. Value added

### Low value added creation in distributive trades

It is important that enterprises have a high value added in order to maintain a welfare society. Enterprises' value added, i.e. current revenue, total, less consumption of goods and services, is spent on wages and new investments, among other things. In 2003, Danish enterprises had an average value added percentage of 28 relative to current revenue, total. Hotels and restaurants (44 per cent) and business services (51 per cent) had a high ranking, while wholesale and retail trade was below average (13 and 19 per cent, respectively).

Figure 7 Enterprise results. Selected industries 2003



The low percentage profit in trade is due to the fact that enterprises in these industries resell products without changing them. Consequently, the work performed per krone earned is considerably less in trading enterprises than in enterprises in other industries, and profits are lower relative to turnover. This is reflected in the accounts so that the consumption of goods and services account for a very large part of the turnover in trading, while the other service industries as well as mining and quarrying have a relatively low consumption of goods and services. On the other hand, wages account for a large part of the costs in the service sector as well as in manufacturing and in construction.

## 3. Workplaces

### Most workplaces are small

Denmark has a little more than 280,000 permanent workplaces. Almost half of the workplaces are situated in Jutland, while about one-third of them are found in the metropolitan area. Approximately 3 million jobs are being performed at these workplaces. On average, there are about 10 jobs per workplace, but the size of the workplaces varies much. By far most of the workplaces are small. Almost two-thirds of the workplaces have less than 5 jobs, and only about 9,000 workplaces in Denmark have 50 or more jobs. The large workplaces are concentrated around the major cities. About 15 per cent of the workplaces with 100 or more jobs are situated in the Municipality of Copenhagen.

Figure 8 Workplaces by industry and size 2004

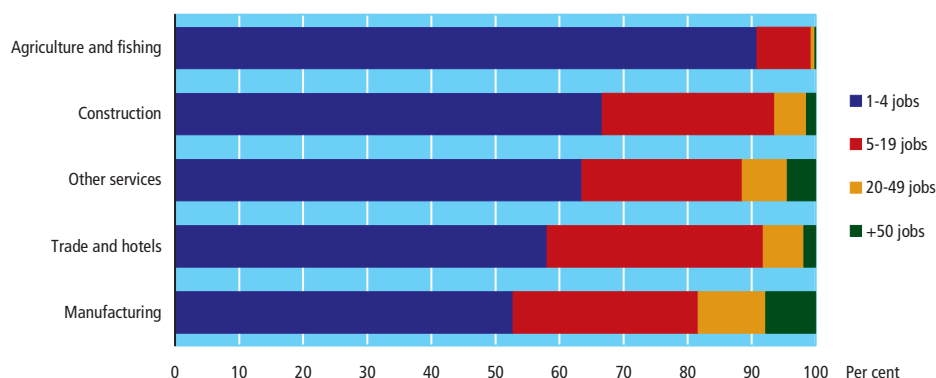


Figure 9 Number of jobs by sector 2004



Especially in agriculture and fishing, workplaces are very small since more than 90 per cent of the workplaces in these industries have fewer than 5 jobs. Most workplaces comprise only one job, and the person working at such workplaces is usually the owner himself. The largest workplaces are found in manufacturing and in services. As regards services, large workplaces are particularly common in public service activities.

### One-third of all jobs are public sector jobs

A little more than one-third of all jobs in Denmark are found in the public sector, which comprises general government as well as publicly owned companies. General government accounts for 31 per cent of all jobs, whereas publicly owned companies account for 3 per cent of all jobs. The private sector is almost twice the size as almost two-thirds of all jobs are in private enterprises.

Social institutions account for a little more than one-third of all jobs in the public sector. Almost 25 per cent of the jobs are found in the educational sector, while a little more than 10 per cent of the jobs are found in public administration.

#### 4. Research and development (R&D) and innovation

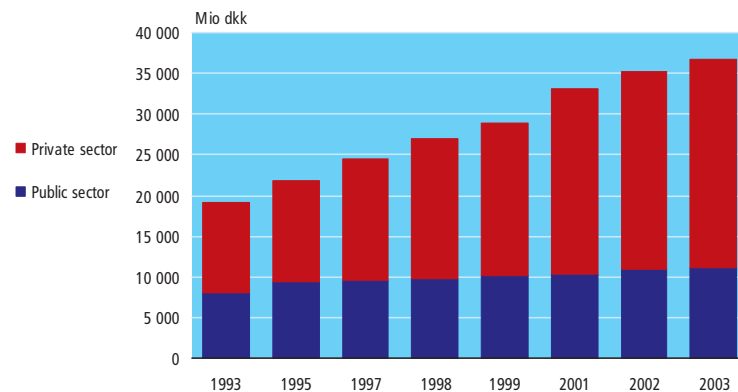
Research and development as well as innovation activities are important factors for the development of productivity and, consequently, for economic growth in society. The creation of new knowledge and its subsequent use in the enterprises are important factors for the dynamics and innovation of the business sector by way of introducing new products and production processes.

##### Increasing private sector share of R&D

R&D activities take place both in the private and the public sector. Total Danish R&D expenditure in the public and private sector has almost doubled in the period 1993-2003 and amounted to DKK 36.0 billion in 2003. The private sector's share of total R&D expenditure has been increasing since the 1990s and amounted to more than two-thirds of total R&D expenditure in 2003.

Figure 10

R&amp;D expenditure of the public and private sector 1993-2003

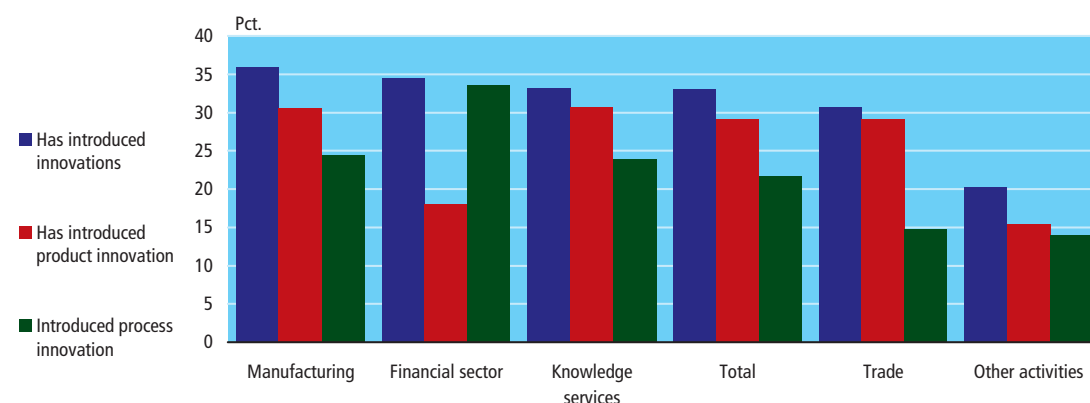


Source: Danish Centre for Studies in Research and Research Policy.

##### Manufacturing and businesses in knowledge services account for the highest R&D investments

R&D expenditure is particularly high in manufacturing, and total expenditure on own R&D activities reached DKK 15.7 billion in 2003. This amount corresponds to 63 per cent of the private sector's expenditure on R&D. Enterprises in knowledge services, which include, for example, ICT service activities, research and development and consulting engineers accounted for R&D expenditure amounting to DKK 6.6 billion, which corresponds to more than one-fourth (26.4 per cent) of R&D expenditure in the private sector in 2003.

Figure 11 Percentage of innovative enterprises 2000-2002 by selected industries



Source: Danish Centre for Studies in Research and Research Policy

### One-third of all enterprises are innovative

By far the majority of Danish enterprises do not carry out research and development activities. Rather, they try to increase their competitiveness by introducing new products and production processes, i.e. innovation. One-third of all Danish enterprises have introduced innovations during the period 2000-2002. Innovative enterprises are found primarily in manufacturing, finance and business services as well as trade. In all industries, a larger part of the enterprises have introduced new products relative to new working processes. Total innovation expenditure amounted to DKK 43.2 billion in 2002.

Table 242

## Enterprises by kind of ownership and industry 2003

	Sole proprie- torship	Partner- ship etc.	Public limited company	Private limited company	Founda- tion, society, etc.	Co- operative society, etc.	Public authority	Other owner	Total
	number of enterprises								
<b>Total</b>	<b>159 132</b>	<b>18 694</b>	<b>28 515</b>	<b>47 251</b>	<b>13 300</b>	<b>2 219</b>	<b>460</b>	<b>6 141</b>	<b>275 712</b>
Agriculture, fishing, quarrying	41 674	4 016	662	1 210	188	44	...	52	47 846
Manufacturing	7 841	750	5 329	4 445	172	60	...	133	18 730
Electricity, gas and water supply	469	1 117	214	73	1 067	1 042	...	15	3 997
Construction	17 400	787	2 859	6 687	10	8	...	124	27 875
Ws. and retail trade; hotels, restaurants	34 614	3 587	8 321	13 345	634	674	...	905	62 080
Transport, post and telecomm.	9 578	664	1 456	2 066	280	60	1	161	14 266
Finance and business activities	30 590	5 287	8 991	15 947	3 433	225	1	1 031	65 505
Public and personal services	16 897	2 462	629	3 329	7 488	104	458	3 697	35 064
Activity not stated	69	24	54	149	28	2	...	23	349

Note. Number of real active enterprises, which means enterprises where a performance of at least 0.5 full-time equivalent employees has been performed.

Table 243

## Enterprises by full-time equivalent employees and industry 2003

	Number of full-time equivalent employees						
	0	1-9	10-19	20-49	50-99	100 +	Total
	number of enterprises						
<b>Total</b>	<b>150 028</b>	<b>101 929</b>	<b>12 182</b>	<b>7 279</b>	<b>2 149</b>	<b>2 145</b>	<b>275 712</b>
Agriculture, horticulture and forestry	35 905	9 458	291	122	20	8	45 804
Fishing	978	860	8	3	...	...	1 849
Mining and quarrying	72	83	19	9	3	7	193
Mfr. of food, beverages and tobacco	261	995	226	131	64	82	1 759
Mfr. of textiles and wearing apparel, leather	474	436	82	60	25	17	1 094
Mfr. of wood products, printing and publ.	1 400	1 330	319	257	77	87	3 470
Mfr. of chemicals, plastic	256	413	137	128	64	73	1 071
Mfr. of other non-metallic mineral products	306	199	60	55	21	36	677
Mfr. of basic metals and fabr. metal prod.	3 229	3 358	933	766	300	288	8 874
Mfr. of furniture; manufacturing n.e.c.	824	594	142	131	48	46	1 785
Electricity, gas and water supply	3 428	485	38	25	8	13	3 997
Construction	12 639	12 172	1 854	947	176	87	27 875
Sale and rep. of motor vehicles, sale of auto fuel	3 103	4 315	491	306	74	42	8 331
Wholesale except of motor vehicles	5 697	7 931	1 375	924	291	175	16 393
Re. trade and repair work exc. of motor vehicles	10 624	11 674	1 054	503	72	78	24 005
Hotels and restaurants	6 581	6 055	432	215	42	26	13 351
Transport	5 776	5 898	744	443	138	111	13 110
Post and telecommunications	829	229	29	33	12	24	1 156
Finance and insurance	3 399	916	121	96	49	84	4 665
Letting and sale of real estate	17 688	4 158	303	169	53	31	22 402
Business activities	24 013	11 917	1 282	792	226	208	38 438
Public administration	...	57	26	28	25	357	493
Education	1 134	941	482	485	124	116	3 282
Human health activities	4 407	5 809	187	20	8	8	10 439
Social institutions etc.	4	2 140	902	288	116	54	3 504
Associations, culture and refuse disposal	6 997	9 171	639	340	112	87	17 346
Activity not stated	4	335	6	3	1	...	349

Note. Number of real active enterprises, which means enterprises where a performance of at least 0.5 full-time equivalent employees has been performed.

Table 244

## Full-time equivalent by full-time equivalent employees and industry 2003

	1-9	10-19	20-49	50-99	100 +	Total
number of full-time equivalent employees						
<b>Total</b>	<b>294 114</b>	<b>163 480</b>	<b>216 707</b>	<b>147 809</b>	<b>1 346 236</b>	<b>2 168 346</b>
Agriculture, horticulture and forestry	19 364	3 861	3 412	1 288	1 598	29 523
Fishing	1 891	100	81	...	...	2 072
Mining and quarrying	299	259	265	220	2 111	3 154
Mfr. of food, beverages and tobacco	4 335	2 952	4 116	4 558	55 161	71 122
Mfr. of textiles and leather	1 391	1 130	1 805	1 724	2 957	9 007
Mfr. of wood products, printing and publ.	4 707	4 330	7 727	5 316	25 617	47 697
Mfr. of chemicals, plastic products	1 551	1 833	3 995	4 322	37 587	49 288
Mfr. of other non-metallic mineral products	646	847	1 676	1 466	11 067	15 702
Mfr. of basic metals and fabr. metal prod.	12 222	12 654	23 566	20 726	91 454	160 622
Mfr. of furniture; manufacturing n.e.c.	1 962	1 968	4 091	3 248	14 139	25 408
Electricity, gas and water supply	1 258	515	693	537	6 264	9 267
Construction	40 199	24 784	27 942	11 712	28 391	133 028
Sale and rep. of motor vehicles, sale of auto. fuel	13 386	6 690	9 083	5 032	9 625	43 816
Wholesale except of motor vehicles	25 952	18 778	27 491	20 126	46 349	138 696
Re. trade and repair work exc. of m. vehic.	34 003	13 898	14 436	4 737	50 094	117 168
Hotels and restaurants	15 222	5 736	6 469	2 923	7 522	37 872
Transport	17 118	9 932	13 431	9 461	56 697	106 639
Post and telecommunications	628	412	1 106	835	42 467	45 448
Finance and insurance	2 448	1 636	3 009	3 384	59 564	70 041
Letting and sale of real estate	9 848	4 024	5 069	3 664	5 277	27 882
Business activities	32 581	17 242	23 677	15 840	73 424	162 764
Public administration	232	353	910	1 701	622 198	625 394
Education	3 316	6 878	13 727	8 574	39 998	72 493
Human health activities	15 017	2 300	520	576	20 688	39 101
Social institutions etc.	9 733	11 693	8 375	8 063	11 316	49 180
Associations, culture and refuse disposal	24 338	8 600	9 965	7 713	24 671	75 287
Activity not stated	467	75	70	63	...	675

Note. Consists number of full-time equivalent employees in real active enterprises.

Table 245

## Enterprises by industry, etc. 2003

	Turnover	Exports	Result before financial items	Capital formation, net
	DDK mio.			
<b>Total</b>	<b>2 392 526</b>	<b>575 246</b>	<b>152 558</b>	<b>96 812</b>
Agriculture, horticulture and forestry	76 288	995	...	...
Fishing	3 595	385	...	...
Mining and quarrying	34 675	12 801	21 158	3 899
Mfr. of food, beverages and tobacco	152 243	61 938	8 039	7 018
Mfr. of textiles and leather	12 597	5 989	664	341
Mfr. of wood products, printing and publ.	57 525	9 186	2 247	2 665
Mfr. of chemicals, plastic products	88 546	60 317	10 245	5 518
Mfr. of other non-metallic mineral products	19 576	3 300	1 224	1 298
Mfr. of basic metals and fabr. metal prod.	198 790	112 992	9 483	8 979
Mfr. of furniture; manufacturing n.e.c.	29 915	16 629	1 338	1 628
Electricity, gas and water supply	...	...	...	...
Construction	151 287	2 683	9 596	6 728
Sale and rep. of motor vehicles, sale of auto. fuel	130 599	8 264	3 731	3 501
Wholesale except of motor vehicles	601 931	129 537	16 835	7 367
Re. trade and repair work exc. of m. vehic.	227 705	6 578	8 875	4 140
Hotels and restaurants	32 631	802	3 080	1 432
Transport	235 163	113 621	16 373	15 578
Post and telecommunications	58 620	2 380	3 971	7 549
Finance and insurance	...	...	...	...
Letting and sale of real estate	59 760	1 682	22 764	14 971
Business activities	174 074	24 084	12 611	3 316
Public administration	...	...	...	...
Education	...	...	...	...
Human health activities	16 187	23	...	...
Social institutions etc.	...	...	...	...
Associations, culture and refuse disposal	30 819	1 060	324	885
Activity not stated	...	...	...	...

Note. Number of real active enterprises, which means enterprises where a performance of at least 0.5 full-time equivalent employees has been performed.

Table 246

## Actually new enterprises distributed on industries

	Number of enterprises		
	2001	2002	2003
<b>Total</b>	<b>29 953</b>	<b>26 638</b>	<b>29 712</b>
Agriculture, fishing and quarrying	3 872	2 853	2 470
Manufacturing	1 429	1 346	1 486
Electricity, gas and water supply	228	270	138
Construction	2 845	2 633	2 878
Ws. and retail trade; hotels, restaurants	6 703	6 248	7 177
Transport, post and telecomm.	1 515	1 246	1 182
Finance and business activities	9 750	8 856	11 546
Public and personal services	3 509	3 082	2 732
Industry not stated	102	104	103

For further information visit [www.statbank.dk/07](http://www.statbank.dk/07)

**Table 247 (continued) Accounts statistics for enterprises for selected industries 2003**

	Total <sup>1</sup>	Quarrying	Manu- fac- turing	Con- struc- tion	Sale and repair of motor vehicles, etc.
<b>Operating results</b>	DKK mio.				
Turnover	2 244 249	34 675	559 192	151 287	130 599
	as percentage of turnover				
Other operating income	1.3	0.4	1.3	1.0	0.4
Cost of goods consumed	53.2	5.2	51.1	37.1	79.7
Subcontractors, etc.	2.2	0.1	1.3	13.9	0.3
Wages and salaries, pensions	18.0	3.9	23.4	28.7	9.8
Depreciations	3.5	12.8	4.3	2.2	1.0
Other expenses	17.9	17.3	15.3	12.7	6.8
Result before financial items	6.6	61.0	5.9	6.3	2.9
Financial receipts	7.0	4.4	3.7	0.8	0.5
Financial expenses	3.4	4.1	2.8	1.5	1.2
Extraordinary expenses, net	-0.2	0.0	0.1	0.0	-0.1
Corporation tax	1.9	7.6	2.0	0.7	0.4
Result after corporation tax	8.5	53.8	4.7	5.0	1.9
<b>Balance sheet data</b>	DKK mio.				
Total assets = total liabilities	2 304 240	41 794	518 133	85 816	51 353
	as percentage of assets				
Total assets:					
Fixed assets, total	59.1	71.7	54.4	40.7	34.3
Intangible assets	2.2	0.6	3.0	2.6	1.2
Land and buildings	18.8	1.4	13.5	16.4	19.5
Plant and equipment	7.4	60.5	10.9	4.2	1.3
Other tangibles	4.6	3.1	5.2	9.9	7.4
Financial assets	26.1	6.1	21.7	7.6	4.8
Current assets, total	40.9	28.3	45.6	59.3	65.7
Stocks	8.0	1.3	14.1	8.2	33.8
Trade debtors	11.0	13.0	13.4	24.5	16.5
Other debtors, cash, etc.	21.9	14.0	18.1	26.6	15.5
Total liabilities:					
Capital and reserves	44.7	39.6	43.6	25.4	27.1
Provisions for liabilities	3.1	14.4	3.5	3.7	2.8
Long-term liabilities	19.6	17.8	16.7	18.2	17.2
Current liabilities	32.5	28.2	36.2	52.8	52.9
<b>Capital formation, net</b>	92 234	3 899	27 445	6 728	3 501
	per cent				
<b>Increase from 2002 to 2003</b>					
Turnover	0.6	-2.3	-0.9	1.2	-2.1
Result after tax	52.8	14.8	14.9	7.0	-3.5
Total assets = total liabilities	0.4	7.5	2.4	5.0	-0.7
Capital and reserves	4.7	10.8	5.2	8.6	3.1
<b>Ratios, average</b>					
Value added (per cent)	27,9	77,4	33,4	37,0	13,6
Gross profit (per cent)	44,6	94,6	47,6	49,0	20,0
Turnover per person engaged (DKK thousand)	1 772	10 821	1 460	1 005	2 636
Wages and salaries per employees (DKK thousand)	321	403	320	298	272
Number of enterprises	182 953	193	18 730	27 875	8 331
Number of persons employed (in full-time units)	1 283 597	3 217	388 240	152 019	49 748
of whom employees (in full-time units)	1 161 977	3 150	378 899	133 044	43 822

<sup>1</sup> Excluding agriculture, fishing, electricity, gas and water supply, ports etc., transport via railways and buses, banks, insurance, non-profit housing associations, public administration, etc.

For further information visit [www.statbank.dk/regn1](http://www.statbank.dk/regn1), regn3 and regn7

**Table 247 (continued) Accounts statistics for enterprises for selected industries 2003**

	Wholesale trade	Retail trade	Hotels and restaurants, etc.	Transport, <sup>2</sup> post and telecomm. activities, etc.	Real estate <sup>3</sup> and business activities, etc.
<b>Operating results</b>	DKK mio.				
Turnover	601 931	227 705	32 631	272 396	233 834
	—as percentage of turnover—				
Other operating income	0.8	1.0	3.5	1.8	3.0
Cost of goods consumed	79.3	70.5	30.5	19.4	19.5
Subcontractors, etc.	0.3	0.1	0.5	3.6	3.7
Wages and salaries, pensions	9.0	13.3	31.2	17.0	31.9
Depreciations	1.2	1.5	4.3	7.8	5.3
Other expenses	8.3	11.7	27.5	48.2	27.6
Result before financial items	2.8	3.9	9.4	5.7	15.1
Financial receipts	1.9	1.1	0.9	11.2	37.5
Financial expenses	1.5	0.9	3.8	3.6	14.1
Extraordinary expenses, net	0.0	0.0	-0.1	0.2	-1.9
Corporation tax	0.8	0.7	0.3	4.3	3.4
Result after corporation tax	2.4	3.4	6.4	8.8	37.1
<b>Balance sheet tax</b>	DKK mio.				
Total assets = total liabilities	300 205	89 531	28 073	384 365	804 972
	—as percentage of assets—				
Total assets:					
Fixed assets, total	39.7	46.6	79.5	71.1	67.1
Intangible assets	2.3	2.6	4.1	2.8	1.3
Land and buildings	7.8	22.3	53.8	7.3	31.3
Plant and equipment	1.2	0.3	1.7	18.2	1.1
Other tangibles	4.8	7.7	13.5	6.0	2.2
Financial assets	23.8	13.7	6.4	36.9	31.1
Current assets, total	60.3	53.4	20.5	28.9	32.9
Stocks	16.7	28.5	2.6	0.6	1.0
Trade debtors	23.2	7.0	4.3	8.8	4.8
Other debtors, cash, etc.	20.4	17.9	13.6	19.5	27.1
Total liabilities:					
Capital and reserves	36.1	37.2	22.6	49.0	51.7
Provisions for liabilities	1.6	1.2	2.6	3.3	2.9
Long-term liabilities	13.0	16.1	46.2	22.9	22.3
Current liabilities	49.3	45.5	28.6	24.8	23.1
<b>Capital formation, net</b>	DKK mio.				
	7 367	4 140	1 432	19 435	18 287
	per cent				
<b>Increase from 2002 to 2003</b>					
Turnover	2.6	0.6	-0.8	0.6	1.0
Result after tax	-9.9	11.3	-2.2	170.4	108.5
Total assets = total liabilities	8.6	3.9	4.2	0.0	-4.4
Capital and reserves	12.7	23.3	21.5	6.4	0.1
<b>Ratios, average</b>					
Value added (per cent)	13.0	18.6	43.5	30.4	51.1
Gross profit (per cent)	20.4	29.4	69.0	77.0	76.8
Turnover per person engaged (DKK thousand)	4 215	1 690	680	1 996	1 086
Wages and salaries per employee (DKK thousand)	359	239	252	328	383
Number of enterprises	16 393	24 005	13 351	13 958	60 117
Number of persons employed (in full- time persons)	143 961	136 011	49 681	138 892	221 828
Of whom employees (in full-time persons)	138 646	117 180	37 965	128 087	181 184

<sup>2</sup> Excluding ports etc. and transport via railways and buses. <sup>3</sup> Excluding non-profit housing associations.

**Table 248** (continued) **Regional accounts statistics 2003**

	Turnover	Cost of goods consumed, etc.	Gross profit	Capital formation, net	Gross profit, per cent	Number of establishments	Number of employees
	DKK mio.						
<b>Total inclusive quarrying<sup>1</sup></b>							
<b>Whole country</b>	<b>2 242 549</b>	<b>1 241 131</b>	<b>1 001 417</b>	<b>80 330</b>	<b>45</b>	<b>200 525</b>	<b>1 159 198</b>
<b>Total excluding quarrying<sup>1</sup></b>							
<b>Whole country</b>	<b>2 207 571</b>	<b>1 239 139</b>	<b>968 432</b>	<b>76 435</b>	<b>44</b>	<b>200 200</b>	<b>1 155 897</b>
Copenhagen and Frederiksberg Municipalities	323 288	129 729	193 560	18 079	60	25 873	137 994
Copenhagen County	411 347	240 771	170 576	7 759	41	24 224	188 551
Frederiksborg County	112 021	61 343	50 678	3 590	45	15 699	62 606
Roskilde County	66 014	37 128	28 887	2 469	44	9 477	39 350
West Zealand County	88 731	52 940	35 791	2 975	40	10 523	48 630
Storstrøm County	53 361	29 299	24 061	1 892	45	8 699	36 352
Bornholm County	8 876	5 239	3 638	297	41	1 434	6 135
Funen County	143 979	84 971	59 007	5 096	41	15 688	85 944
South Jutland County	97 826	59 630	38 196	3 820	39	8 432	54 603
Ribe County	97 178	49 694	47 484	3 842	49	7 963	53 822
Vejle County	170 387	105 568	64 819	5 515	38	13 454	89 979
Ringkøbing County	122 890	76 422	46 468	4 421	38	9 770	67 930
Århus County	251 068	149 569	101 499	7 742	40	23 642	135 379
Viborg County	83 435	50 094	33 341	3 274	40	8 438	50 918
North Jutland County	177 170	106 744	70 426	5 664	40	16 884	97 705
<b>Quarrying</b>							
<b>Whole country</b>	<b>34 978</b>	<b>1 992</b>	<b>32 986</b>	<b>3 895</b>	<b>94</b>	<b>325</b>	<b>3 301</b>
<b>Manufacturing</b>							
<b>Whole country</b>	<b>549 138</b>	<b>287 744</b>	<b>261 395</b>	<b>22 684</b>	<b>48</b>	<b>20 839</b>	<b>374 299</b>
Copenhagen and Frederiksberg Municipalities	30 990	11 004	19 986	1 239	64	1 702	18 240
Copenhagen County	60 916	25 040	35 876	2 409	59	1 948	37 638
Frederiksborg County	24 536	10 407	14 128	1 232	58	1 382	18 148
Roskilde County	14 416	7 075	7 341	595	51	881	10 911
West Zealand County	33 906	18 560	15 346	1 338	45	1 071	18 517
Storstrøm County	16 384	8 183	8 201	723	50	925	12 260
Bornholm County	3 074	2 025	1 049	116	34	179	2 016
Funen County	45 659	24 908	20 751	1 897	45	1 904	32 331
South Jutland County	33 150	19 088	14 062	1 473	42	930	23 657
Ribe County	31 394	16 804	14 590	1 332	46	972	23 444
Vejle County	52 452	28 722	23 730	2 339	45	1 775	36 774
Ringkøbing County	52 284	30 862	21 423	2 233	41	1 473	33 856
Århus County	60 417	33 109	27 309	2 352	45	2 611	43 737
Viborg County	35 350	20 143	15 207	1 692	43	1 185	25 881
North Jutland County	54 210	31 814	22 396	1 715	41	1 901	36 889
<b>Construction</b>							
<b>Whole country</b>	<b>151 222</b>	<b>77 451</b>	<b>73 771</b>	<b>6 445</b>	<b>49</b>	<b>28 553</b>	<b>132 716</b>
Copenhagen and Frederiksberg Municipalities	6 859	3 031	3 827	443	56	1 949	6 294
Copenhagen County	33 142	18 938	14 204	823	43	3 202	23 352
Frederiksborg County	8 779	4 387	4 391	346	50	2 699	7 409
Roskilde County	6 730	3 243	3 488	295	52	1 777	5 806
West Zealand County	8 265	3 912	4 353	377	53	2 078	7 874
Storstrøm County	5 896	2 743	3 154	286	53	1 709	5 995
Bornholm County	811	362	449	42	55	229	1 011
Funen County	11 594	5 758	5 835	552	50	2 351	11 321
South Jutland County	5 490	2 695	2 795	273	51	1 286	5 502
Ribe County	6 654	3 304	3 350	290	50	1 200	6 635
Vejle County	12 070	6 349	5 721	517	47	1 873	10 413
Ringkøbing County	7 654	3 931	3 722	392	49	1 386	6 748
Århus County	17 305	8 778	8 526	835	49	2 964	15 427
Viborg County	6 000	2 859	3 140	333	52	1 419	5 840
North Jutland County	13 974	7 160	6 814	640	49	2 431	13 089

<sup>1</sup> Excluding agriculture, fishing, quarrying, electricity, gas and water supply, ports etc., transport via railways and buses, banks, insurance, non-profit housing associations, public administration, etc.

For further information visit [www.statbank.dk/regn4](http://www.statbank.dk/regn4)

**Table 248** (continued) **Regional accounts statistics 2003**

	Turnover	Cost of goods consumed, net	Gross profit	Capital formation, net	Gross profit, per cent	Number of establishments	Number of employees
	DKK mio.						
<b>Sale and repair of motor-vehicles, sale of auto. fuel</b>							
<b>Whole country</b>	<b>130 350</b>	<b>104 268</b>	<b>26 082</b>	<b>3 438</b>	<b>20</b>	<b>9 357</b>	<b>43 661</b>
Copenhagen and Frederiksberg Municipalities	8 171	6 772	1 399	153	17	451	2 116
Copenhagen County	25 898	21 476	4 422	354	17	802	5 934
Frederiksborg County	8 410	6 655	1 755	174	21	672	2 974
Roskilde County	6 722	5 280	1 442	205	21	427	2 165
West Zealand County	6 315	4 918	1 397	247	22	634	2 595
Storstrøm County	4 285	3 367	918	150	21	509	1 806
Bornholm County	503	389	114	11	23	56	268
Funen County	10 819	8 664	2 155	414	20	836	3 669
South Jutland County	7 170	5 737	1 433	250	20	573	2 485
Ribe County	5 188	4 018	1 169	119	23	434	2 225
Vejle County	11 835	9 589	2 246	257	19	729	3 681
Ringkøbing County	5 811	4 584	1 227	216	21	575	2 299
Århus County	13 647	10 620	3 027	346	22	1 163	5 214
Viborg County	5 511	4 310	1 201	221	22	545	2 119
North Jutland County	10 066	7 889	2 178	321	22	951	4 110
<b>Wholesale trade</b>							
<b>Whole country</b>	<b>610 184</b>	<b>487 216</b>	<b>122 967</b>	<b>5 750</b>	<b>20</b>	<b>18 276</b>	<b>139 204</b>
Copenhagen and Frederiksberg Municipalities	65 808	53 557	12 251	678	19	1 922	12 508
Copenhagen County	165 065	129 866	35 198	939	21	3 101	36 494
Frederiksborg County	34 963	24 959	10 004	356	29	1 542	10 267
Roskilde County	14 739	10 743	3 996	237	27	885	4 754
West Zealand County	18 222	15 282	2 940	162	16	710	3 799
Storstrøm County	7 349	5 623	1 726	91	23	518	2 427
Bornholm County	862	675	186	11	22	70	267
Funen County	34 831	28 146	6 685	397	19	1 410	9 027
South Jutland County	27 371	21 857	5 513	424	20	814	6 731
Ribe County	18 189	14 181	4 008	202	22	676	5 061
Vejle County	52 598	43 407	9 191	524	17	1 409	10 390
Ringkøbing County	30 400	23 984	6 416	397	21	933	7 498
Århus County	75 441	61 480	13 962	668	19	2 303	16 536
Viborg County	18 181	14 740	3 441	146	19	652	4 338
North Jutland County	46 165	38 716	7 449	519	16	1 331	9 107
<b>Retail trade</b>							
<b>Whole country</b>	<b>220 199</b>	<b>153 644</b>	<b>66 555</b>	<b>3 413</b>	<b>30</b>	<b>30 159</b>	<b>116 621</b>
Copenhagen and Frederiksberg Municipalities	25 808	17 350	8 458	386	33	4 607	14 102
Copenhagen County	26 328	18 429	7 899	316	30	3 008	13 756
Frederiksborg County	13 982	9 871	4 111	169	29	2 058	7 253
Roskilde County	11 511	8 037	3 474	133	30	1 177	5 605
West Zealand County	11 530	8 159	3 371	102	29	1 655	5 943
Storstrøm County	10 831	7 613	3 218	126	30	1 523	5 887
Bornholm County	2 013	1 464	549	28	27	262	1 056
Funen County	17 977	12 627	5 350	355	30	2 495	9 590
South Jutland County	9 130	6 454	2 676	200	29	1 264	4 845
Ribe County	8 881	6 217	2 664	153	30	1 262	4 739
Vejle County	15 114	10 265	4 848	272	32	1 844	8 179
Ringkøbing County	11 110	7 772	3 338	209	30	1 498	6 091
Århus County	27 618	19 342	8 276	405	30	3 475	14 804
Viborg County	8 368	5 997	2 371	164	28	1 266	4 264
North Jutland County	19 999	14 047	5 952	396	30	2 765	10 507

**Table 248** (continued) **Regional accounts statistics 2003**

	Turnover	Cost of goods consumed, etc.	Gross profit	Capital formation, net	Gross profit, per cent	Number of establishments	Number of employees
	DKK mio.						
<b>Hotels and restaurants</b>							
<b>Whole country</b>	<b>32 869</b>	<b>10 132</b>	<b>22 737</b>	<b>1 076</b>	<b>69</b>	<b>14 087</b>	<b>38 765</b>
Copenhagen and Frederiksberg Municipalities	7 667	2 257	5 410	210	71	2 655	9 395
Copenhagen County	3 843	1 302	2 541	51	66	1 242	4 830
Frederiksborg County	1 746	554	1 191	19	68	828	1 979
Roskilde County	1 044	357	687	44	66	433	1 146
West Zealand County	1 210	379	831	37	69	703	1 276
Storstrøm County	1 121	348	773	18	69	635	1 180
Bornholm County	511	146	365	28	71	229	515
Funen County	2 641	833	1 808	80	68	1 162	3 122
South Jutland County	1 182	343	839	60	71	649	1 353
Ribe County	1 444	442	1 002	57	69	603	1 708
Vejle County	2 020	593	1 427	73	71	848	2 366
Ringkøbing County	1 176	356	820	48	70	573	1 340
Århus County	3 379	1 047	2 332	123	69	1 634	4 035
Viborg County	1 015	325	690	48	68	559	1 108
North Jutland County	2 871	850	2 021	179	70	1 334	3 411
<b>Transport<sup>2</sup>, post and telecomm.</b>							
<b>Whole country</b>	<b>274 936</b>	<b>64 778</b>	<b>210 158</b>	<b>16 639</b>	<b>76</b>	<b>15 704</b>	<b>127 401</b>
Copenhagen and Frederiksberg Municipalities	105 741	17 619	88 121	10 122	83	1 642	25 008
Copenhagen County	49 659	15 965	33 694	- 275	68	2 148	27 355
Frederiksborg County	5 788	1 169	4 618	291	80	889	4 535
Roskilde County	4 391	987	3 403	346	78	790	3 607
West Zealand County	4 121	826	3 294	258	80	894	4 268
Storstrøm County	3 539	624	2 915	235	82	761	3 261
Bornholm County	647	120	527	33	81	92	596
Funen County	9 093	1 762	7 331	515	81	1 107	7 555
South Jutland County	9 074	2 395	6 679	526	74	792	5 764
Ribe County	20 669	3 943	16 726	1 276	81	709	5 911
Vejle County	13 360	4 248	9 112	752	68	1 141	8 684
Ringkøbing County	6 162	1 919	4 244	319	69	792	4 795
Århus County	26 410	9 167	17 244	1 231	65	1 763	14 595
Viborg County	3 330	671	2 658	211	80	741	3 004
North Jutland County	12 954	3 362	9 592	799	74	1 443	8 463
<b>Real estate<sup>3</sup> and business activities, etc.</b>							
<b>Whole country</b>	<b>238 673</b>	<b>53 906</b>	<b>184 766</b>	<b>16 991</b>	<b>77</b>	<b>63 225</b>	<b>183 231</b>
Copenhagen and Frederiksberg Municipalities	72 245	18 138	54 107	4 847	75	10 945	50 331
Copenhagen County	46 497	9 756	36 741	3 142	79	8 773	39 192
Frederiksborg County	13 818	3 338	10 480	1 003	76	5 629	10 042
Roskilde County	6 462	1 405	5 057	614	78	3 107	5 357
West Zealand County	5 163	905	4 258	452	82	2 778	4 358
Storstrøm County	3 955	798	3 157	265	80	2 119	3 536
Bornholm County	456	58	398	28	87	317	404
Funen County	11 366	2 274	9 092	887	80	4 423	9 329
South Jutland County	5 258	1 059	4 198	614	80	2 124	4 267
Ribe County	4 761	786	3 975	412	83	2 107	4 099
Vejle County	10 939	2 394	8 544	782	78	3 835	9 492
Ringkøbing County	8 293	3 015	5 278	607	64	2 540	5 302
Århus County	26 850	6 026	20 825	1 781	78	7 729	21 031
Viborg County	5 681	1 049	4 632	460	82	2 071	4 364
North Jutland County	16 931	2 905	14 025	1 095	83	4 728	12 127

<sup>2</sup> Excluding ports etc. and transport via railways and buses. <sup>3</sup> Excluding general housing associations.

Table 249

## Accounts statistics for Danish and foreign owned companies 2003

	Manufacturing and mining and quarrying		Wholesale and retail trade; hotels, restaurants		Total <sup>1</sup>	
	Danish owned	Foreign owned	Danish owned	Foreign owned	Danish owned	Foreign owned
	DKK bn.					
Turnover	440	140	655	219	1 552	462
	per cent					
Turnover	100.0	100.0	100.0	100.0	100.0	100.0
Cost of goods consumed, etc.	49.6	47.8	77.3	73.9	55.2	57.9
Wage and salaries, pension, etc.	22.8	19.3	10.0	12.4	18.1	17.2
Other ordinary expenses	19.8	20.5	9.8	12.4	21.3	20.2
Financial receipts, net	1.2	0.1	0.4	-0.2	2.5	10.3
Financial expenses, net	0.0	0.1	0.0	0.0	0.2	0.1
Result before corporation tax	9.1	12.7	3.3	1.1	8.1	15.2
	DKK bn.					
Total assets	421	125	317	96	1 582	411
Investments, net	25	5	10	2	64	12
	number					
Enterprises	9 617	515	21 932	1 412	66 583	2 835
Employees <sup>2</sup>	290 773	74 386	211 377	70 237	813 159	200 852
Employees <sup>2</sup> per enterprise	30	144	10	50	12	71
	DKK 1000's					
Turnover per employee	1 515	1 888	3 098	3 123	1 909	2 298
Wage and salaries per employee	319	339	289	357	319	363
	per cent					
Gross profit	49.7	51.7	22.1	25.4	44.1	41.3
Net profit ratio	7.9	12.4	2.9	1.3	5.4	4.7
Return on equity	15.9	30.0	13.4	4.0	12.4	37.2
Proprietary ratio	45.2	38.8	36.9	32.4	47.0	43.6

<sup>1</sup> Excluding agriculture and fishing, power stations, gasworks, etc., ports etc., transport via railways and buses, banks, insurance, non-profit building societies, public administration, etc. <sup>2</sup> In full-time persons.

For further information visit [www.statbank.dk/fats1](http://www.statbank.dk/fats1) and [fats2](http://www.statbank.dk/fats2)

Table 250

## Danish and foreign owned enterprises in the private sector

	2002 <sup>3</sup>			2003		
	total	Danish	Foreign	Total	Danish	Foreign
	DKK bn.					
Turnover <sup>1</sup>	2 384	1 916	468	2 392	1 927	465
	number					
Employees <sup>2</sup>	1 422 304	1 193 056	229 248	1 403 560	1 175 516	228 044
Enterprises	274 316	271 279	3 037	268 530	265 464	3 066
Employees <sup>2</sup> per enterprise	5	4	75	5	4	74
	per cent					
Share of turnover <sup>1</sup>	100.0	80.4	19.6	100.0	80.6	19.4
Share of number of enterprises	100.0	98.9	1.1	100.0	98.9	1.1
Share of employees	100.0	83.9	16.1	100.0	83.8	16.2

<sup>1</sup> Sales exclude power stations and gasworks, banks and financial intermediation, etc. <sup>2</sup> In full-time persons. <sup>3</sup> The figures for 2002 are revised compared with earlier publications.

For further information visit [www.statbank.dk/fatsf1](http://www.statbank.dk/fatsf1) and [fatsf2](http://www.statbank.dk/fatsf2)

Table 251

## Workplaces, wage and salary costs, by county 2004

	Workplaces at the end of November	Jobs at the end of November	Full-time employees	Annual wage and salary costs
				mio. DKK
<b>Total</b>	<b>282 728</b>	<b>2 956 333</b>	<b>2 177 932</b>	<b>681 525</b>
Copenhagen Municipality	26 285	357 383	265 447	95 449
Frederiksberg Municipality	4 169	43 610	30 579	10 070
Copenhagen County	27 947	390 127	309 568	109 159
Frederiksborg County	19 577	169 817	122 480	39 206
Roskilde County	11 906	109 151	78 759	24 235
West Zealand County	16 210	140 926	101 302	29 796
Storstrøm County	14 235	115 305	81 535	22 784
Bornholm Municipality <sup>1</sup>	2 464	20 405	14 734	3 988
Funen County	23 108	238 523	171 200	50 104
South Jutland County	13 917	129 722	96 122	27 596
Ribe County	12 677	128 242	94 406	27 990
Vejle County	18 655	200 490	150 007	44 983
Ringkøbing County	16 915	158 103	112 897	32 984
Århus County	32 720	356 928	257 201	78 608
Viborg County	15 045	131 833	94 137	27 047
North Jutland County	26 627	258 114	186 891	54 748
Outside Denmark	271	7 654	10 014	2 568
Not stated	-	-	653	209

Note. The method has been changed so that the figures are no longer directly comparable with previous years. The changes are described in more detail in Statistiske Efterretninger.

<sup>1</sup> Incl. Christiansø.

For further information visit [www.statbank.dk/08](http://www.statbank.dk/08)

Table 252

## Workplaces, aggregate wage and salary costs. By industry 2004

	Workplaces at the end of November	Jobs at the end of November	Full-time employees	Annual wage and salary costs
				mio. DKK
<b>Total</b>	<b>282 728</b>	<b>2 956 333</b>	<b>2 177 932</b>	<b>681 525</b>
Agriculture, fishing, quarrying	43 610	103 469	37 146	10 157
Manufacturing	18 779	415 349	362 380	115 539
Electricity, gas and water supply	2 502	17 094	12 362	4 713
Construction	27 032	179 444	138 517	40 191
Ws. and retail trade; hotels, restaurants	64 418	531 990	345 366	101 246
Transport, post and telecomm.	15 093	186 016	153 265	48 850
Finance and business activities	56 496	431 386	287 625	109 570
Public and personal services	53 907	1 090 374	840 992	251 170
Activity not stated	891	1 211	279	89

Note. The method has been changed so that the figures are no longer directly comparable with previous years. The changes are described in more detail in Statistiske Efterretninger.

For further information visit [www.statbank.dk/08](http://www.statbank.dk/08)

Table 253 (continued)

## Workplaces, wage and salary costs, by industry 2004

	Workplaces at the end of November	Jobs at the end of November	Full-time employees	Annual wage and salary costs
				DKK mio.
<b>Total</b>	<b>282 728</b>	<b>2 956 333</b>	<b>2 177 932</b>	<b>681 525</b>
<b>Agriculture, fishing, quarrying</b>	<b>43 610</b>	<b>103 469</b>	<b>37 146</b>	<b>10 157</b>
Agriculture	36 634	70 291	16 658	4 124
Market gardening	1 488	10 554	6 440	1 483
Machine pools and landscape gardening	2 341	10 494	6 532	1 736
Forestry	1 202	3 563	1 849	531
Fishing	1 684	4 666	1 897	695
Extr. of oil and natural gas	30	2 260	2 296	1 108
Extr. of gravel, clay etc.	231	1 641	1 474	479
<b>Manufacturing</b>	<b>18 779</b>	<b>415 349</b>	<b>362 380</b>	<b>115 539</b>
Production etc. of meat and meat products	240	20 961	20 407	6 369
Mfr. of dairy products	116	10 029	9 379	3 124
Baker's shops	1 017	13 274	5 735	1 326
Mfr. of other food products	573	26 172	23 000	7 153
Mfr. of beverages	65	4 777	4 740	1 560
Mfr. of tobacco products	9	1 248	1 286	391
Mfr. of textiles	498	6 798	5 909	1 668
Mfr. of wearing apparel	441	2 938	2 234	654
Mfr. of leather and footwear	61	403	318	91
Mfr. of wood and wood products	657	14 543	12 803	3 595
Mfr. of pulp, paper and paper products	183	7 548	7 162	2 322
Publishing of newspapers	195	12 155	6 572	2 489
Publishing activities, excluding newspapers	1 007	13 534	7 774	2 822
Printing activities	1 237	12 921	10 611	3 579
Mfr. of refined petroleum products, etc.	14	985	949	471
Mfr. of chemical raw materials	80	4 891	4 761	1 832
Mfr. of paints and soap	215	7 699	7 254	2 417
Mfr. of pharmaceuticals	85	17 282	16 831	6 910
Mfr. of rubber and plastic products	688	21 052	19 272	5 875
Mfr. of glass and ceramic goods	265	3 253	2 766	821
Mfr. of tiles, bricks, cement and concrete	613	12 579	11 426	3 723
Mfr. of basic metals	161	5 820	5 397	1 650
Mfr. of building materials of metal	2 952	26 852	22 334	6 729
Mfr. of various metal products	976	17 606	15 738	4 644
Mfr. of marine engines, compressors	283	20 605	19 737	6 099
Mfr. of ovens and cold-storage plants	668	18 482	17 328	5 663
Mfr. of agricultural machinery	438	5 396	4 794	1 423
Mfr. of machinery for industries	839	14 627	13 371	4 392
Mfr. of domestic appliances	60	2 969	2 932	877
Mfr. of computers, electric motors	991	23 071	21 172	6 849
Mfr. of radio and communication equipment	197	7 448	6 690	2 078
Mfr. of medical and optical instruments	689	15 254	13 871	4 700
Building ships and boats	239	5 521	4 981	1 653
Mfr. of transport equipment, excl. ships	236	9 364	8 881	2 843
Mfr. of furniture	1 040	19 791	17 730	4 837
Mfr. of toys and jewellery	751	7 501	6 235	1 910

Note. The method has been changed so that the figures are no longer directly comparable with previous years. The changes are described in more detail in Statistiske Efterretninger.

For further information visit [www.statbank.dk/08](http://www.statbank.dk/08)

**Table 253** (continued) **Workplaces, wage and salary costs, by industry 2004**

	Workplaces at the end of November	Jobs at the end of November	Full-time employees	Annual wage and salary costs
				DKK mio.
<b>Electricity, gas and water supply</b>	<b>2 502</b>	<b>17 094</b>	<b>12 362</b>	<b>4 713</b>
Production and distribution of electricity	1 069	9 117	7 085	2 697
Manufacture and distribution of gas	37	1 796	1 655	722
Steam and hot water supply	352	2 771	2 120	741
Collection and distribution of water	1 044	3 410	1 502	553
<b>Construction</b>	<b>27 032</b>	<b>179 444</b>	<b>138 517</b>	<b>40 191</b>
General contractors	4 329	49 565	42 077	13 203
Bricklaying	3 173	15 968	11 145	3 055
Install. of electrical wiring and fittings	2 777	27 951	23 864	7 002
Plumbing	3 086	19 659	15 659	4 580
Joinery installation	7 111	35 331	24 768	6 440
Painting and glazing	3 335	15 984	11 059	2 856
Other construction work	3 221	14 986	9 945	3 054
<b>Ws. and retail trade; hotels, restaurants</b>	<b>64 418</b>	<b>531 990</b>	<b>345 366</b>	<b>101 246</b>
Sale of motor vehicles and motorcycles	3 215	33 877	28 991	8 457
Maintenance and repair of motor vehicles	4 617	16 919	10 493	2 722
Retail sale of automotive fuel	1 178	13 805	5 389	1 226
Ws. of grain and animal feeds	703	6 892	5 666	1 842
Ws. of food, beverages and tobacco	1 640	20 554	16 391	5 322
Ws. of textiles and household goods	3 766	37 280	30 636	10 870
Ws. of wood and construction materials	1 042	14 068	12 306	3 877
Ws. of other raw mat. and semi manufactures	1 785	20 394	17 747	6 101
Ws. of machinery, equipment and supplies	4 250	50 383	45 340	17 636
Other wholesale trade	2 268	14 331	10 963	3 864
Re. sale of food in non-specialized stores	4 438	56 354	31 150	7 333
Re. sale of food in specialized stores	2 669	11 619	5 052	1 174
Department stores	201	29 933	17 794	4 175
Re. sale of phar. goods and cosmetic art	985	9 875	7 563	1 915
Re. sale of clothing and footwear	5 537	27 142	15 663	3 561
Re. sale of furniture and household appliances	3 871	28 328	19 865	5 110
Re. sale in other specialized stores	8 895	37 312	21 188	5 319
Repair of household goods	1 186	3 110	1 689	468
Hotels	1 590	24 268	12 434	3 200
Restaurants	10 582	75 546	29 046	7 073
<b>Transport, post and telecomm.</b>	<b>15 093</b>	<b>186 016</b>	<b>153 265</b>	<b>48 850</b>
Transport via railways and buses	427	22 152	20 651	6 045
Taxi operation and coach services	3 524	17 475	9 224	2 511
Freight transport by road and via pipelines	6 545	38 615	28 030	8 458
Water transport	360	11 384	12 600	4 009
Air transport	115	6 745	7 624	3 165
Supporting transport activities	2 314	36 356	30 781	10 220
Post and telecommunications	1 808	53 289	44 355	14 442

**Table 253** (continued) **Workplaces, wage and salary costs, by industry 2004**

	Workplaces at the end of November	Jobs at the end of November	Full-time employees	Annual wage and salary costs
				DKK mio.
<b>Finance and business activities</b>	<b>56 496</b>	<b>431 386</b>	<b>287 625</b>	<b>109 570</b>
Financial institutions	2 126	44 966	41 215	16 423
Mortgage credit institutions	1 207	11 267	8 926	3 973
Insurance	522	17 164	14 845	6 584
Activities auxiliary to finance	440	4 789	3 960	1 821
Letting of own property	11 491	29 075	14 473	4 483
Real estate agents	2 892	16 358	10 192	3 740
Renting of transport equipment and machinery	1 753	8 682	5 161	1 687
Computer and related activities	6 079	43 132	36 103	16 362
Research and development	337	12 976	11 774	4 648
Legal advice	1 580	11 628	8 079	3 012
Accounting, book-keeping and auditing	3 870	18 743	14 078	5 452
Consulting engineers and architects	5 362	40 149	32 999	13 433
Advertising	2 094	19 207	8 928	3 196
Building-cleaning activities	4 880	54 525	30 187	7 805
Other business activities	11 863	98 725	46 705	16 952
<b>Public and personal services</b>	<b>53 907</b>	<b>1 090 374</b>	<b>840 992</b>	<b>251 170</b>
General public service activities	513	61 521	55 206	17 590
Administration of public sectors	906	35 756	31 460	10 690
Defence, police and administration of justice	899	68 588	57 112	18 390
Primary education	3 014	116 616	93 537	29 766
Secondary education	626	41 915	36 509	12 197
Higher education	233	33 329	25 054	9 084
Adult and other education	2 900	36 496	19 381	6 718
Hospital activities	197	110 595	99 444	31 813
Medical, dental and veterinary activities	13 040	58 174	33 660	10 403
Social institutions for children	8 186	168 334	131 361	32 844
Social institutions for adults	4 431	195 889	156 216	39 237
Refuse disposal and similar activities	927	21 905	20 867	5 941
Activities of membership organizations	4 933	52 497	31 455	11 303
Recreational, cultural and sporting activities	5 338	62 445	37 798	12 241
Other service activities	7 764	26 314	11 932	2 955
<b>Activity not stated</b>	<b>891</b>	<b>1 211</b>	<b>279</b>	<b>89</b>

**Table 254** **Workplaces, jobs, wage and salary costs, by sector 2004**

	Workplaces at the end of November	Jobs at the end of November	Full-time employees	Annual aggregate wage and salary costs DKK mio.
<b>Total</b>	<b>282 728</b>	<b>2 956 333</b>	<b>2 177 932</b>	<b>681 525</b>
Private sector	255 989	1 933 052	1 340 236	431 719
Public sector, total	26 732	1 023 268	837 632	249 757
Public corporations and quasi-corporations	3 262	91 163	80 712	26 567
General government	23 470	932 105	756 920	223 191
Central government	5 056	198 548	155 226	52 878
Social security funds	122	2 668	2 492	988
Counties	2 795	206 345	175 693	54 398
Municipalities	15 497	524 544	423 509	114 926
Foreign sector	7	13	64	48

Note. The method has been changed so that the figures are no longer directly comparable with previous years. The changes are described in more detail in Statistiske Efterretninger.

For further information visit [www.statbank.dk/08](http://www.statbank.dk/08)

Table 255

## Workplaces by size and industry/county 2004

	Jobs at workplaces at the end of November							Total
	1	2-4	5-9	10-19	20-49	50-99	100 +	
	workplaces, total							
<b>Total</b>	<b>110 201</b>	<b>76 483</b>	<b>41 964</b>	<b>28 397</b>	<b>16 789</b>	<b>5 421</b>	<b>3 473</b>	<b>282 728</b>
<b>Industry</b>								
Agriculture, fishing, quarrying	26 397	13 134	2 963	771	282	48	15	43 610
Manufacturing	5 024	4 167	3 074	2 716	2 179	841	778	18 779
Electricity, gas and water supply	973	1 043	271	93	74	20	28	2 502
Construction	10 732	7 289	4 540	2 738	1 336	294	103	27 032
Ws. and retail trade; hotels, restaurants	16 280	21 129	13 396	8 333	4 082	821	377	64 418
Transport, post and telecommunications	5 388	4 394	2 220	1 442	1 040	336	273	15 093
Finance and business activities	29 735	14 024	6 308	3 604	1 887	546	392	56 496
Public and personal services	14 903	11 208	9 170	8 697	5 907	2 515	1 507	53 907
Activity not stated	769	95	22	3	2	-	-	891
<b>County</b>								
Copenhagen Municipality	10 061	7 158	3 615	2 553	1 764	603	531	26 285
Frederiksberg Municipality	1 874	1 112	497	342	230	60	54	4 169
Copenhagen County	10 547	7 169	3 893	3 066	2 046	688	538	27 947
Frederiksborg County	8 597	5 105	2 602	1 751	1 016	316	190	19 577
Roskilde County	5 166	3 029	1 617	1 141	648	198	107	11 906
West Zealand County	6 827	4 321	2 309	1 503	838	273	139	16 210
Storstrøm County	6 115	3 728	2 063	1 346	674	202	107	14 235
Bornholm Municipality <sup>1</sup>	972	690	379	242	125	35	21	2 464
Funen County	8 644	6 202	3 705	2 458	1 371	464	264	23 108
South Jutland County	5 252	4 048	2 145	1 372	740	236	124	13 917
Ribe County	4 522	3 634	2 036	1 357	735	252	141	12 677
Vejle County	6 928	5 020	2 854	1 959	1 232	403	259	18 655
Ringkøbing County	6 345	4 787	2 612	1 701	1 015	294	161	16 915
Århus County	12 379	8 613	5 124	3 523	2 010	636	435	32 720
Viborg County	6 094	4 266	2 197	1 336	773	261	118	15 045
North Jutland County	9 825	7 526	4 242	2 715	1 552	493	274	26 627
Outside Denmark	53	75	74	32	20	7	10	271

Note. The method has been changed so that the figures are no longer directly comparable with previous years. The changes are described in more detail in Statistiske Efterretninger.

<sup>1</sup> Incl. Christiansø.

For further information visit [www.statbank.dk/08](http://www.statbank.dk/08)

Table 256

## Workplaces by size and sector 2004

	Jobs at workplaces at the end of November							Total
	1	2-4	5-9	10-19	20-49	50-99	100 +	
	number of workplaces							
<b>Total</b>	<b>110 201</b>	<b>76 483</b>	<b>41 964</b>	<b>28 397</b>	<b>16 789</b>	<b>5 421</b>	<b>3 473</b>	<b>282 728</b>
Private sector	108 622	72 730	37 056	21 373	11 379	2 922	1 907	255 989
Public sector, total	1 574	3 752	4 907	7 024	5 410	2 499	1 566	26 732
Public corporations and quasi-corporations	614	1 020	499	368	415	163	183	3 262
General government, total	960	2 732	4 408	6 656	4 995	2 336	1 383	23 470
Central government	261	982	1 073	1 030	969	373	368	5 056
Social security funds	20	38	25	17	12	5	5	122
Counties	73	242	461	601	735	430	253	2 795
Municipalities	606	1 470	2 849	5 008	3 279	1 528	757	15 497
Foreign sector	5	1	1	-	-	-	-	7

Note. The method has been changed so that the figures are no longer directly comparable with previous years. The changes are described in more detail in Statistiske Efterretninger.

For further information visit [www.statbank.dk/08](http://www.statbank.dk/08)

Table 257

## Jobs by size and industry/county 2004

	Jobs at the workplace at the end of November								
	1	2-4	5-9	10-19	20-49	50-99	100 +	Fictitious units	Total
	number of jobs								
<b>Total</b>	<b>110 201</b>	<b>207 054</b>	<b>276 732</b>	<b>383 836</b>	<b>499 520</b>	<b>374 400</b>	<b>902 708</b>	<b>201 882</b>	<b>2 956 333</b>
<b>Industry</b>									
Agriculture, fishing and quarrying	26 397	33 402	18 628	9 910	8 304	2 978	3 303	547	103 469
Manufacturing	5 024	11 543	20 644	37 163	66 438	57 858	205 278	11 401	415 349
Electricity, gas and water supply	973	2 840	1 652	1 264	2 125	1 454	6 711	75	17 094
Construction	10 732	19 962	30 044	36 526	39 645	19 909	21 662	964	179 444
Ws. and retail trade; hotels, restaurants	16 280	58 864	88 032	111 963	118 633	55 332	72 937	9 949	531 990
Transport, post and telecommunications	5 388	11 955	14 473	19 414	31 980	22 994	73 889	5 923	186 016
Finance and business activities	29 735	36 813	41 344	48 273	56 061	37 928	104 455	76 777	431 386
Public and personal services	14 903	31 443	61 777	119 293	176 292	175 947	414 473	96 246	1 090 374
Activity not stated	769	232	138	30	42	-	-	-	1 211
<b>County</b>									
Copenhagen Municipality	10 061	19 279	23 821	34 795	52 670	41 982	156 859	17 916	357 383
Frederiksberg Municipality	1 874	2 966	3 245	4 611	6 704	4 277	17 167	2 766	43 610
Copenhagen County	10 547	19 387	25 623	41 964	60 653	48 324	162 469	21 160	390 127
Frederiksborg County	8 597	13 573	17 188	23 751	29 757	21 948	43 035	11 968	169 817
Roskilde County	5 166	8 186	10 649	15 555	19 209	14 238	27 708	8 440	109 151
West Zealand County	6 827	11 686	15 241	20 369	24 628	18 532	32 859	10 784	140 926
Storstrøm County	6 115	10 073	13 662	18 106	19 708	13 703	25 125	8 813	115 305
Bornholm Municipality <sup>1</sup>	972	1 880	2 510	3 271	3 768	2 510	4 317	1 177	20 405
Funen County	8 644	16 834	24 473	32 900	41 319	31 964	62 012	20 377	238 523
South Jutland County	5 252	11 033	13 994	18 238	22 049	16 186	32 516	10 454	129 722
Ribe County	4 522	9 930	13 473	18 270	21 854	16 871	35 246	8 076	128 242
Vejle County	6 928	13 657	18 932	26 591	37 033	27 640	55 338	14 371	200 490
Ringkøbing County	6 345	12 899	17 183	22 811	30 758	20 329	37 503	10 275	158 103
Århus County	12 379	23 403	34 067	47 858	59 493	44 025	107 563	28 140	356 928
Viborg County	6 094	11 544	14 347	17 954	23 248	17 890	33 069	7 687	131 833
North Jutland County	9 825	20 504	27 847	36 372	46 103	33 567	64 418	19 478	258 114
Outside Denmark	53	220	477	420	566	414	5 504	-	7 654

Note. The method has been changed so that the figures are no longer directly comparable with previous years. The changes are described in more detail in Statistiske Efterretninger.

<sup>1</sup> Incl. Christiansø.

For further information visit [www.statbank.dk/08](http://www.statbank.dk/08)

Table 258

## Jobs by size of workplace and sector 2004

	Jobs at workplaces at the end of November								
	1	2-4	5-9	10-19	20-49	50-99	100 +	Not stated	Total
	number of jobs								
<b>Total</b>	<b>110 201</b>	<b>207 054</b>	<b>276 732</b>	<b>383 836</b>	<b>499 520</b>	<b>374 400</b>	<b>902 708</b>	<b>201 882</b>	<b>2 956 333</b>
Private sector	108 622	196 081	242 769	285 980	337 191	199 238	459 064	104 107	1 933 052
Public sector, total	1 574	10 970	33 958	97 856	162 329	175 162	443 644	97 775	1 023 268
Public corporations and quasi-corporations	614	2 820	3 222	5 013	13 122	11 447	54 511	414	91 163
General government, total	960	8 150	30 736	92 843	149 207	163 715	389 133	97 361	932 105
Central government	261	2 941	7 137	14 294	28 790	26 201	113 156	5 768	198 548
Social security funds	20	105	158	248	417	353	1 367	-	2 668
Counties	73	748	3 160	8 429	23 593	30 469	135 715	4 158	206 345
Municipalities	606	4 356	20 281	69 872	96 407	106 692	138 895	87 435	524 544
Foreign sector	5	3	5	-	-	-	-	-	13

Note. The method has been changed so that the figures are no longer directly comparable with previous years. The changes are described in more detail in Statistiske Efterretninger.

For further information visit [www.statbank.dk/08](http://www.statbank.dk/08)

Table 259

## Expenses for Research &amp; Development

	1996	1997	1998	1999	2000	2001	2002	2003
	mio. kr. 2003-priser							
<b>Total R&amp;D expenses</b>	<b>20 034</b>	<b>24 469</b>	<b>26 941</b>	<b>28 850</b>	<b>30 844</b>	<b>33 106</b>	<b>35 189</b>	<b>36 043</b>
The public sector	8 135	9 517	9 811	10 121	10 238	10 402	10 902	11 114
The private sector	11 899	14 953	17 130	18 729	20 605	22 705	24 287	24 929
	pct.							
<b>R&amp;D-expenses in per cent of GDP</b>	<b>1,87</b>	<b>2,17</b>	<b>2,32</b>	<b>2,38</b>	<b>2,38</b>	<b>2,48</b>	<b>2,56</b>	<b>2,56</b>
The public sector	0,76	0,85	0,84	0,83	0,79	0,78	0,79	0,79
The private sector	1,11	1,33	1,47	1,54	1,59	1,70	1,77	1,77

Source: Dansk Center for Forskningsanalyse.

Table 260

## Expenses for Research &amp; Development. Yearly growth-rate

	1997-1998	1998-1999	1999-2000	2000-2001	2001-2002	2002-2003
	pct.					
<b>Total</b>	<b>10,1</b>	<b>7,1</b>	<b>6,9</b>	<b>7,3</b>	<b>6,3</b>	<b>2,4</b>
The public sector	3,1	3,2	1,2	1,6	4,8	1,9
The private sector	14,6	9,3	10,0	10,2	7,0	2,6

Source: Dansk Center for Forskningsanalyse.