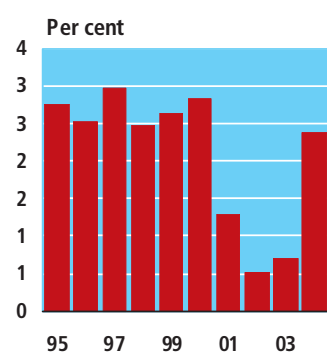


National accounts and balance of payments

1. Danish economy 1995 to 2004

Figure 1
Real growth in GDP
1995-2004



Economic recovery in 2004

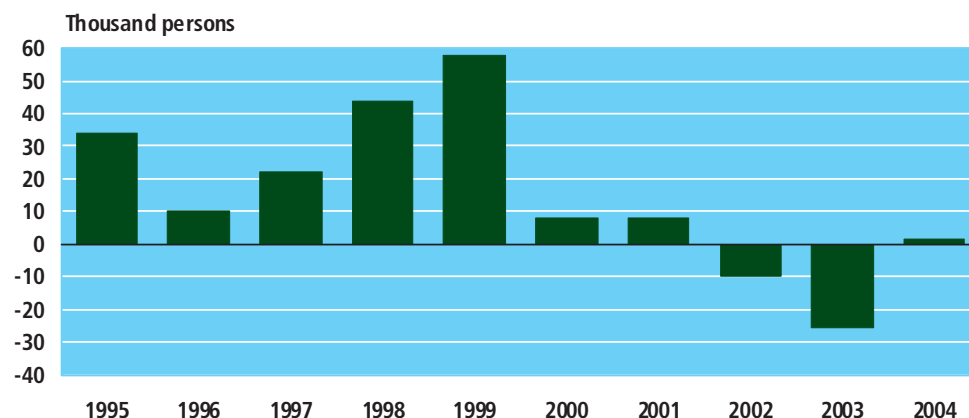
In 2004 the Danish economy recovered from the economic setback, which affected the years 2001-2003. The development in the Danish economy has again reached the level of the growth rates during the years 1994-2000, which is the latest period with an economic boom. In the period 1994-2000 the average real growth in GDP was 3.1 pct., while the growth rate in 2001-2003 was 0.8 pct. on average.

Small increase in employment in 2004

The trends in employment also reflect an incipient recovery in the Danish economy. Employment increased slightly by about 1,700 persons in 2004, so that the average number of persons employed was approximately 2,758,500. In addition 36.000 people were on leave. Changes in employment are often seen with some delay in relation to the economic growth. This is seen clearly at the entrance to the boom in 1994 and again at the slowdown in 2001. In the period 1995-2001 employment rose by 184.600 persons, which corresponds to 380 million working hours. During 2002 and 2003 the total fall in employment has been about 35,500 people.

Figure 2

Annual growth in employment 1995-2004



Goods-producing industries (agriculture, etc., manufacturing, energy, and construction) employed fewer people in 2004 compared to 1995. In 1995, 29.2 per cent were employed in the goods-producing industries, while in 2004 the proportion was 25.2 per cent. During the period from 1995, employment increased, in particular in the private service industries (from 35.7 per cent in 1995 to 38.9 per cent in 2004). The percentage of employed in public and personal services increased from 35.1 per cent in 1995 to 35.9 per cent in 2004.

National accounts and balance of payments

2. Domestic demand and foreign trade

Domestic demand was the driving force in the 1990s

In contrast to domestic demand, exports rose strongly and contributed to GDP in 1990 and 1991. Subsequently, due to a slowdown in economic growth abroad, domestic demand became the driving force in the Danish economy. In 1998, domestic demand remained strong, while exports were weakened by the general strike and the effects of the crises in Asia and Russia. Therefore, there was again a deficit on Denmark's balance of payments in 1998.

Figure 3

Contribution to real annual growth in GDP 1995-2004

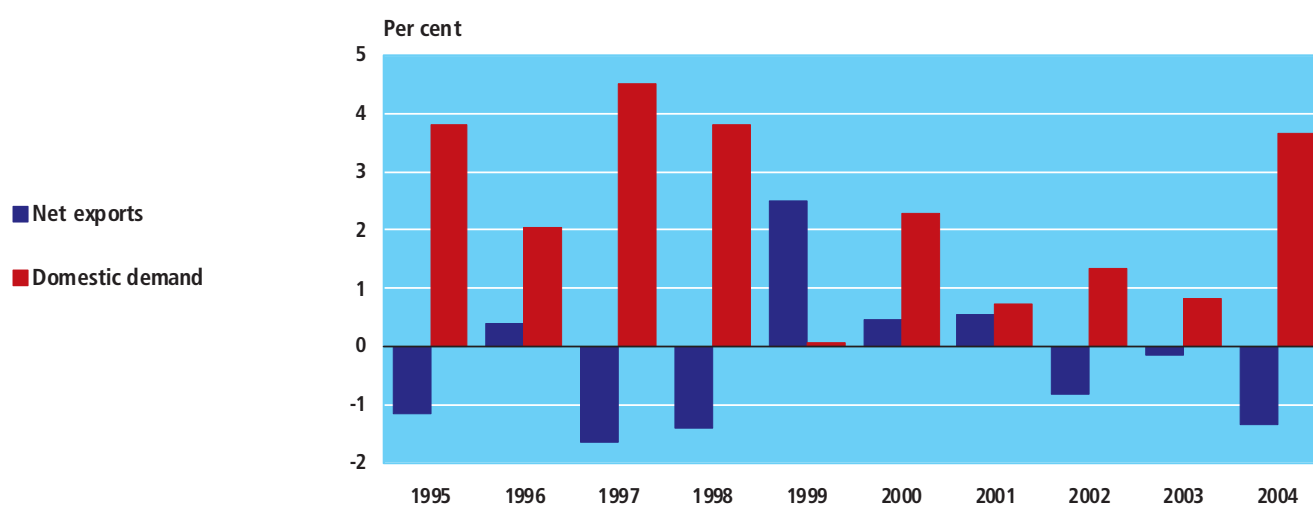
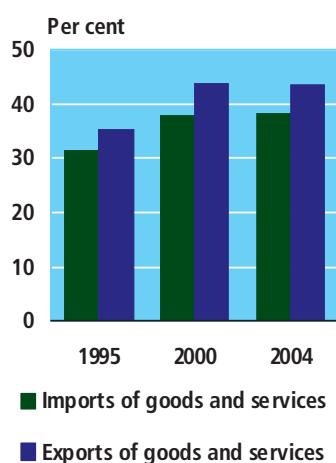


Figure 4
Imports and exports as percentage of GDP, current prices



Domestic demand and exports contributed to growth since 1999

In 1999, domestic demand moderated and resulted in a reduction in import growth. At the same time the economic situation abroad improved and competitiveness was strengthened through a drop in the effective exchange rate for the Krone. This contributed to an increase in exports which again lead to exports being the driving force in economic growth. In 2000-2001, both domestic demand and net exports contributed to economic growth. In 2002 and 2003 the weakened international market conditions were felt. In 2002 there was still some progress in the domestic demand. The import rose faster than the export and again there was a negative contribution to growth from international trade. The growth in GDP in 2003 was the lowest in ten years and the contribution to growth from domestic and international trade were small. In 2004 the domestic demand were the main reason for economic growth, which also made the import rise more than the export, so that the contribution from the international markets were negative.

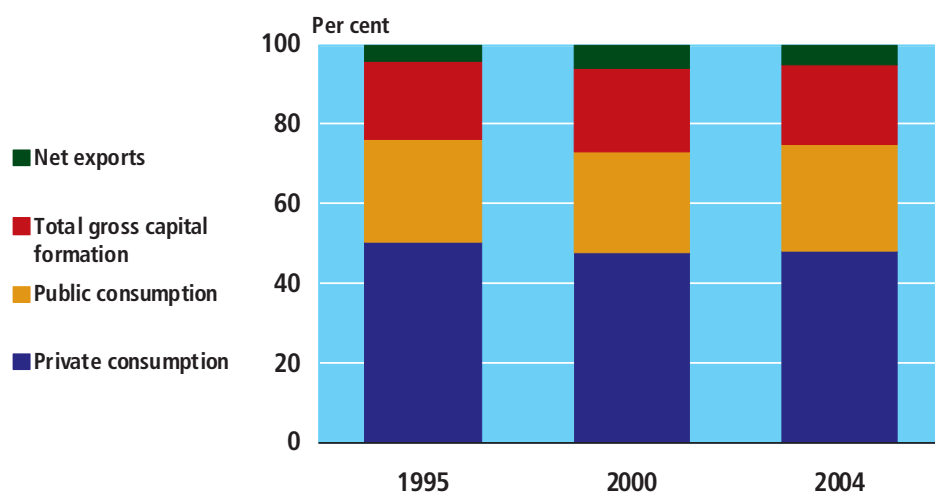
Growing foreign trade

Figures 4 and 5 show a number of main components in the national accounts as a percentage of GDP for 1995, 2000, and 2004. The growth in Danish economy has had a broad foundation – which is shown a stable distribution of internal applications. Denmark's foreign trade grew when measured as the size of imports and exports in proportion to GDP. Net exports as a percentage of GDP increased from 4.1 per cent in 1995 to 5.1 per cent in 2004. However, the most noticeable feature is the low percentage of GDP of private consumption expenditure in 2004, despite the high growth during the year. In the period there was a fall in the

National accounts and balance of payments

percentage of GDP of private consumption expenditure. In 2004 private consumption made up 48.1 pct. of GDP, compared to 50.5 pct. in 1995.

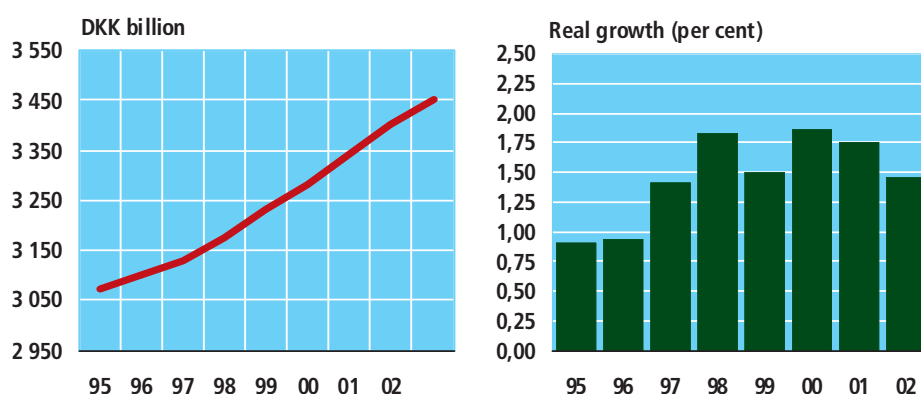
Figure 5 Final uses as a percentage of GDP, current prices



Increase in capital stocks

The share of the national wealth that is held in the form of fixed assets (net capital stock) has increased by almost 12 per cent from 1995 to 2003, measured at constant prices. The net capital stock has continuously increased over the period 1995-2003. The latter half of the decade saw the strongest increase in real growth. The change in the capital stock (net capital stock) at constant prices between two dates of compilation reflects net investment, i.e. the gross fixed capital formation less consumption of fixed capital.

Figure 6 Net capital stock 1995-2002(3)



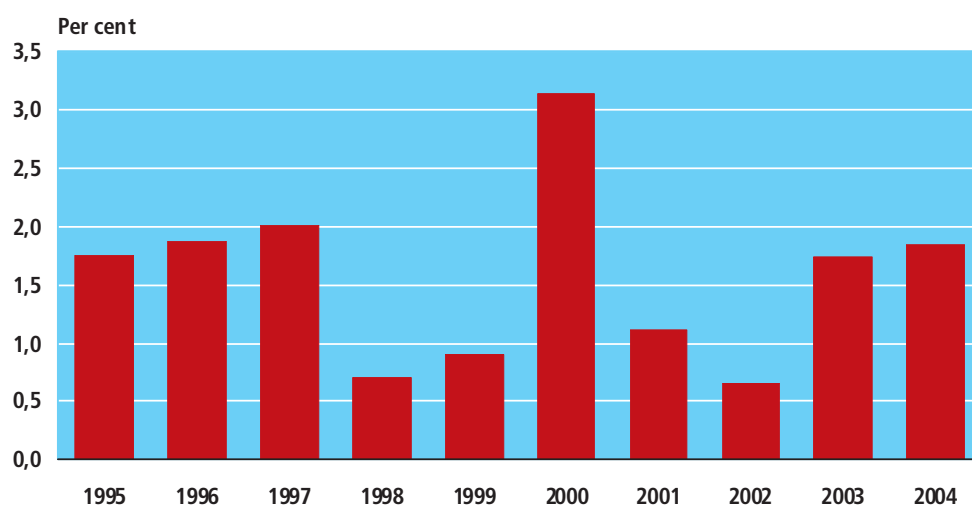
Increased employment resulted in weaker growth in productivity

The productivity of the labour force measured as gross added value at constant prices per employee increased by an annual average of 1.6 per cent from 1995 to 2004. This development conceals a large increase in the productivity at the beginning of the economic recovery and a weaker development in the years 1998-2002, except for 2000, where there was a very sharp increase in productivity. The

National accounts and balance of payments

development in 1998-1999 was largely due to the fact that more people were employed, while the development in the years 2000-2002 was primarily due to the development in gross value added. The change in gross value added per employee reached in 2004 the same level as that in 2003.

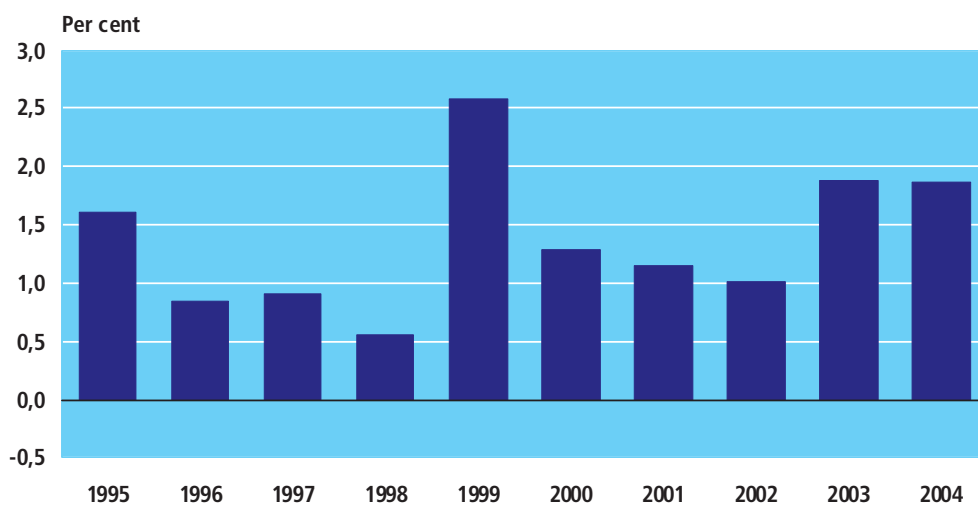
Figure 7 Growth in gross value added at 1995 prices per employee. Annual growth rate 1995-2004



Growth in productivity of 1.4 per cent from 1995-2004

As data on hours of work are now available in the national accounts, the productivity can be estimated as gross value added per hour of work. This results in an annual growth rate of 1.8 per cent from 1995 to 2003, compared to an average growth of 1.6 per cent if the estimate is based on employment. This conceals that there was an average increase in working hours – mainly due to fewer employed on the leave.

Figure 8 Gross value added at 1995 prices per hour. Annual growth rate 1995-2004



Profits grew more than wages and salaries

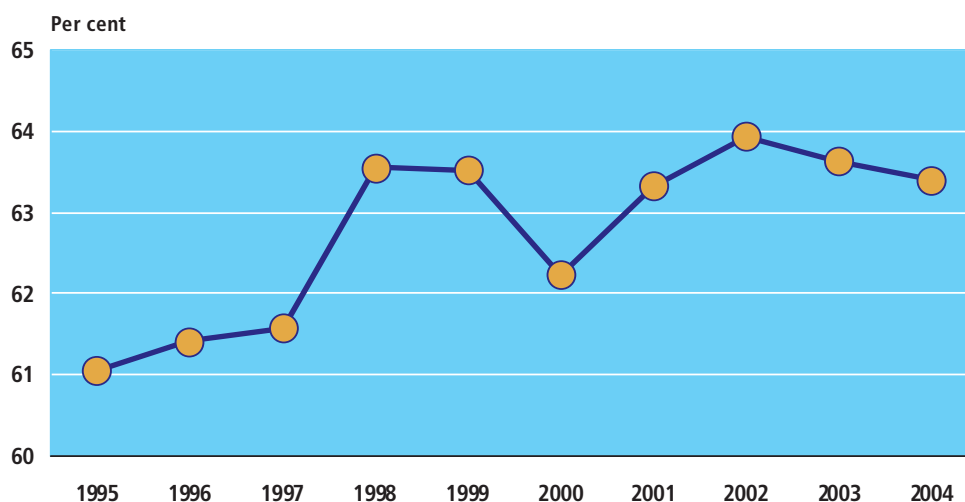
Total income from production comprises compensation of employees and enterprises' profits (gross operating surplus and mixed income). There was a general

National accounts and balance of payments

increase in the share of wages and salaries of total incomes during the period of upturn up to 2000. A temporary fall in the wage share in 2000 is due to an extraordinary increase in the surplus. From 2001 to 2004 the wage share was largely unaltered because of increasing wages to the employed despite of a fall in employment. Figure 9 shows changes in compensation of employees as a proportion of gross income at factor prices.

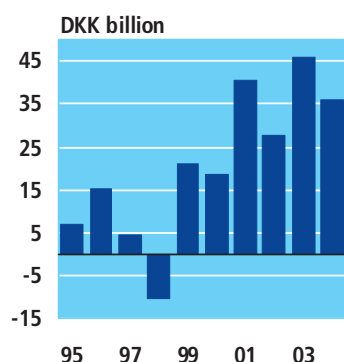
Figure 9

The wage share 1995-2004



3. Balance of payments

Figure 10
Balance of current
accounts 1995-2004



Savings, the balance of payments and debt

The savings share of the whole economy (i.e. savings as a percentage of disposable income) increased from 21.1 per cent in 1995 to the highest level 24.3 per cent in 2001. After this the savings share has decreased to 23.3 in 2004. Throughout the period from 1995 to 1997 savings were able to finance investment, but as the growth in capital formation in the mid-1990s was high, net lending for society as a whole (the balance of payments surplus, plus net capital transfers) fell from DKK 6.7 billion in 1995 to DKK 10.8 billion in 1998. From 1999 net lending was again positive and reached DKK 39.9 billion in 2004.

Reduction in Denmark's foreign debt

The general positive net lending over the period is reflected in the reduction in Denmark's foreign debt. Debt is also influenced by changes in the prices of stocks and shares, and currency fluctuations, changes in stock and share prices. The net lending fell during 1999 from 285 to 152 billion DKK. Since then international exchange movements raised the debt in 2000 to 218 billion DKK. By the end of 2004 the debt was 166 billion DKK.

4. Financial claims

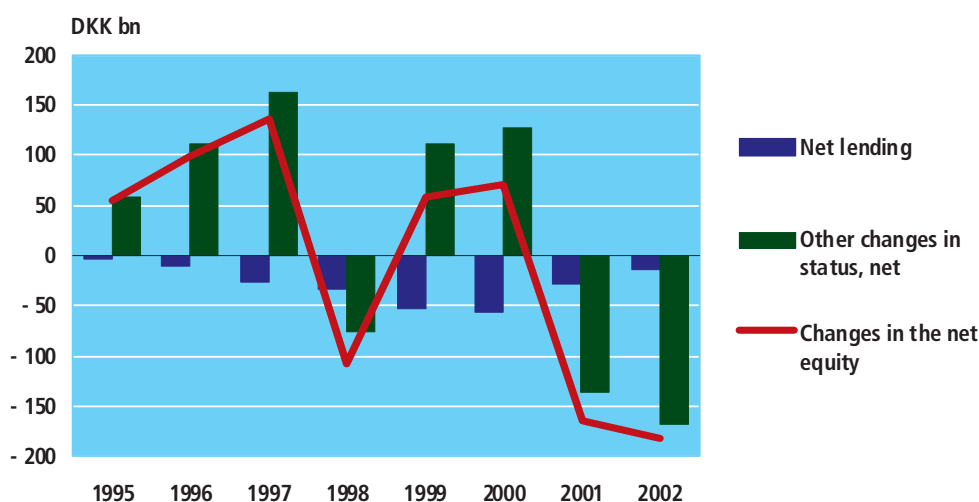
Fall in financial net equity of households

In the period 1995 to 2002 the financial net equity of households has fallen by nearly 16 pct. This is particularly due to a fall in the share prices for the sector's stocks of shares in 2001 and 2002, which has resulted in a negative trend in the financial net equity. In contrast, the adjustments of share prices in the periods

National accounts and balance of payments

1995-1997 and 1999-2000, with favourable developments in the financial markets, had a positive impact on the financial net equity of households. During these periods the positive impact from increases in share prices has outdone the negative impact from a constant deficit of savings (negative net lending).

Figure 11 Development in the net equity of households 1995-2002



In addition to the household sector, financial accounts for another 3 main sectors: corporate sector (non-financial and financial corporations), general government sector and rest of the world are compiled in the national accounts. The financial claims consist of a number of financial assets and liabilities comprising, e.g. shares, bonds and loans. The difference between the total financial assets and the total financial liabilities constitute the financial net worth.

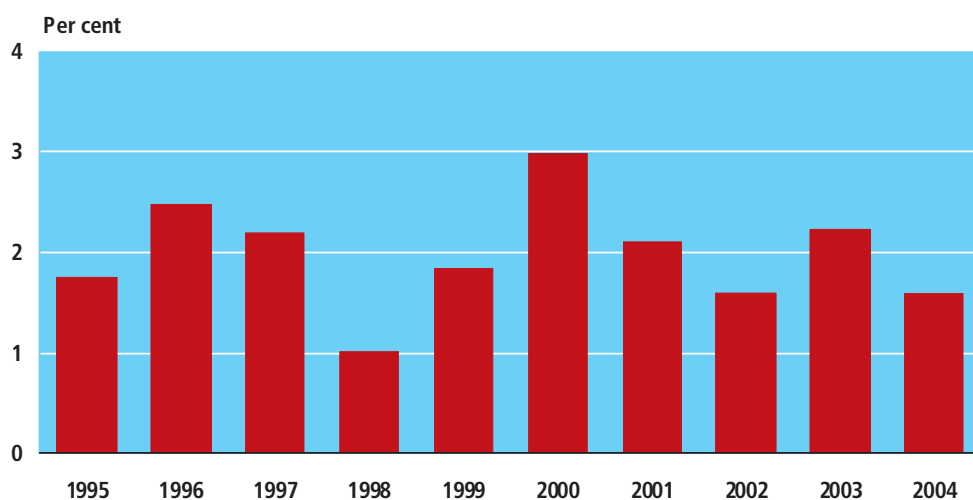
5. Inflation

Stable level of inflation in recent years

Since 1990, inflation (measured as the annual increase in the GDP deflator) has been less than 3 per cent p.a. From 1994 to 1998 annual price increases remained at just under 2 per cent. In 1999 and 2000 inflation was for a short period slightly increasing, this changed however again in 2001 and 2002 with decreasing inflation. In 2003 the inflation rose to 2.2 per cent, and in 2004 it fell to the 2002 level with a 1.6 per cent increase.

Figure 12

Inflation measured as the annual increase in the GDP deflator 1995-2004



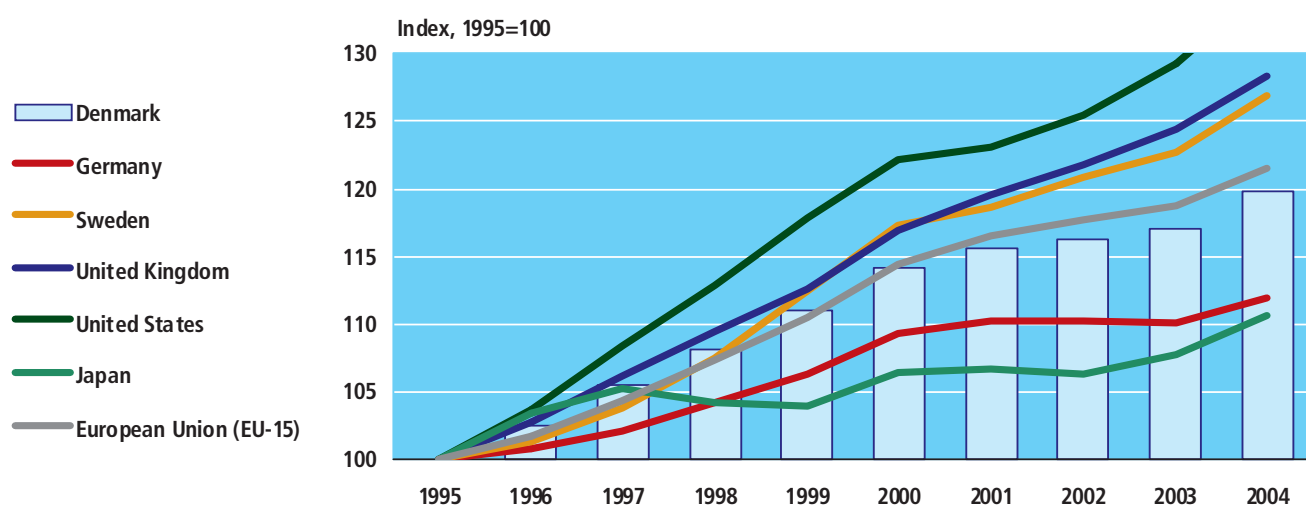
6. International comparisons

Danish growth similar to the rest of the EU

Of the countries with the greatest significance for Danish economic development, the United States, United Kingdom and Sweden in particular have had high economic growth in recent years. Growth in Germany has been weak and in Japan there have been periods of actual reductions in economic activity. Since 1995 Denmark has experienced economic growth similar to the EU average.

Figure 13

GDP in selected countries, constant prices 1995-2004



Source: Eurostat, New Cronos.

Table 389

Supply and demand

	Gross domestic product at market prices	Imports of goods and services	Resources, total	Private consumption expenditure	Government consumption expenditure	Gross capital formation	Exports of goods and services
DKK mio. in current prices							
1990	825 310	253 832	1 079 142	404 915	210 930	167 599	295 698
1991	857 652	268 677	1 126 329	423 030	220 530	163 679	319 090
1992	887 868	265 572	1 153 440	439 262	229 156	160 776	324 246
1993	900 153	257 305	1 157 458	450 158	240 918	147 805	318 577
1994	965 718	291 002	1 256 720	493 821	250 302	169 965	342 632
1995	1 009 756	316 144	1 325 900	509 551	260 299	198 596	357 454
1996	1 060 888	327 181	1 388 069	533 209	274 562	200 885	379 413
1997	1 116 324	367 685	1 484 009	560 854	284 529	231 735	406 891
1998	1 155 407	390 097	1 545 504	581 269	300 452	250 378	413 405
1999	1 207 749	401 816	1 609 565	599 497	312 129	238 312	459 627
2000	1 278 956	487 237	1 766 193	610 469	323 349	268 941	563 434
2001*	1 322 951	505 985	1 828 936	624 483	343 273	269 672	591 508
2002*	1 350 787	525 805	1 876 592	641 856	358 509	273 487	602 740
2003*	1 390 537	508 741	1 899 278	659 259	371 839	273 343	594 837
2004*	1 446 471	555 449	2 001 920	695 326	385 625	291 661	629 308
DKK mio. in 1995 prices							
1990	915 918	262 616	1 178 534	454 311	234 378	176 409	313 436
1991	926 130	270 484	1 196 614	461 622	235 799	166 606	332 587
1992	931 786	269 384	1 201 170	470 389	237 713	163 497	329 571
1993	931 773	262 228	1 194 001	472 690	247 555	148 988	324 768
1994	982 704	294 500	1 277 204	503 350	254 870	171 624	347 360
1995	1 009 756	316 144	1 325 900	509 551	260 299	198 596	357 454
1996	1 035 188	327 357	1 362 545	522 160	269 085	198 400	372 900
1997	1 065 929	360 111	1 426 040	537 195	271 334	229 185	388 326
1998	1 092 236	392 031	1 484 267	549 335	279 783	250 279	404 870
1999	1 121 019	413 591	1 534 610	553 049	285 299	241 768	454 494
2000	1 152 767	469 458	1 622 225	549 042	287 852	269 591	515 740
2001*	1 167 815	485 663	1 653 478	547 960	295 601	271 603	538 314
2002*	1 173 687	520 977	1 694 664	551 375	301 922	277 481	563 886
2003*	1 181 940	513 598	1 695 538	556 076	305 076	279 518	554 868
2004*	1 210 177	551 722	1 761 899	580 098	307 312	297 523	576 966
Annual real growth in per cent							
1990	1.0	1.2	1.0	0.1	-0.2	-3.3	6.2
1991	1.1	3.0	1.5	1.6	0.6	-5.6	6.1
1992	0.6	-0.4	0.4	1.9	0.8	-1.9	-0.9
1993	-0.0	-2.7	-0.6	0.5	4.1	-8.9	-1.5
1994	5.5	12.3	7.0	6.5	3.0	15.2	7.0
1995	2.8	7.3	3.8	1.2	2.1	15.7	2.9
1996	2.5	3.5	2.8	2.5	3.4	-0.1	4.3
1997	3.0	10.0	4.7	2.9	0.8	15.5	4.1
1998	2.5	8.9	4.1	2.3	3.1	9.2	4.3
1999	2.6	5.5	3.4	0.7	2.0	-3.4	12.3
2000	2.8	13.5	5.7	-0.7	0.9	11.5	13.5
2001*	1.3	3.5	1.9	-0.2	2.7	0.7	4.4
2002*	0.5	7.3	2.5	0.6	2.1	2.2	4.8
2003*	0.7	-1.4	0.1	0.9	1.0	0.7	-1.6
2004*	2.4	7.4	3.9	4.3	0.7	6.4	4.0

For further information visit www.statbank.dk/nat01 and [nat02](http://www.statbank.dk/nat02)

Table 390

Generation and disposition of income

	2001*	2002*	2003*	2004*
	DKK mio. at current prices			
Compensation of employees	714 646	734 918	754 518	780 208
+ Gross operating surplus and mixed income	414 002	414 685	431 319	450 567
Gross domestic income at factor cost, GDI	1 128 648	1 149 604	1 185 837	1 230 775
+ Other taxes less subsidies on production	5 229	3 937	6 138	5 376
Gross value added	1 133 877	1 153 541	1 191 975	1 236 151
+ Taxes on products	207 943	215 688	218 565	230 707
÷ Subsidies on products	18 869	18 441	20 003	20 387
Gross domestic product at market prices, GDP	1 322 951	1 350 787	1 390 537	1 446 471
+ Compensation of employees from the rest of the world	6 052	6 434	6 182	6 357
÷ Compensation of employees to the rest of the world	6 198	6 768	6 772	7 336
+ Subsidies from the rest of the world	8 882	8 701	9 007	9 299
÷ Taxes on production and import to the rest of the world	2 443	2 190	2 341	2 858
+ Property income from the rest of the world	83 628	67 097	67 415	70 158
÷ Property income paid to the rest of the world	108 247	94 013	83 955	82 229
Gross national income, GNI	1 304 626	1 330 049	1 380 074	1 439 862
+ Current taxes on income, wealth, etc. from the rest of the world	2 480	2 708	2 709	2 935
+ Other current transfers, etc. from the rest of the world	20 705	17 686	18 920	18 314
÷ Current taxes on income, wealth, etc. to the rest of the world.	1 463	1 555	1 495	1 537
÷ Other current transfers, etc. to the rest of the world.	48 456	47 456	49 915	51 145
Gross national disposable income	1 277 891	1 301 431	1 350 293	1 408 431
÷ Private final consumption expenditure	624 483	641 856	659 259	695 326
÷ General government final consumption expenditure	343 273	358 509	371 839	385 625
Gross national saving	310 135	301 066	319 195	327 480
÷ Corporations and households gross fixed capital formation	243 605	248 861
÷ General government gross fixed capital formation	24 803	23 937	23 287	27 033
Current external balance	40 463	27 579	45 853	35 819
+ Capital transfers from the rest of the world	2 096	2 709	2 253	3 061
÷ Capital transfers to the rest of the world	2 318	1 964	2 307	2 978
Net lending/net borrowing	40 240	28 324	45 799	35 902

For further information visit www.statbank.dk/nat01

Table 391

Net value added, consumption and gross fixed capital formation

	Net value added		Total consumption ¹			Gross fixed capital formation
	Constant prices	Annual increase at constant prices	Constant prices	Constant prices per inhabitant	Annual real growth per inhabitant	Constant prices
	1980=100	per cent	1980=100		per cent	1980=100
1870-1894 ² average	7	2.7	7	18	1.9	4
1895-1914 ² average	14	4.0	15	29	2.1	10
1921-1929 average	24	4.1	25	37	2.8	13
1930-1939 average	31	2.5	30	42	1.4	19
1940-1946 average	31	0.2	28	37	0.6	16
1947-1950 average	39	4.4	39	47	0.6	30
1951-1957 average	44	1.7	43	50	1.0	38
1958-1965 average	57	4.6	57	63	4.1	64
1966-1973 average	79	3.7	79	82	2.9	105
1974-1975 average	88	-2.1	88	89	-0.7	107
1976-1979 average	96	3.6	98	98	3.1	114
1980-1981 average	99	-1.1	100	100	-0.9	90
1982-1986 average	106	2.9	106	107	2.7	103
1987-1993 average	114	0.2	111	110	-0.3	117
1994-2000 average	129	2.1	128	125	2.1	147
2001-2003* average	139	-0.1	135	129	0.2	187
2004*	142	1.8	141	134	3.6	199

Note. Excl. 1915-20. With regard to the basis of calculation, see the source listed below, which also contains further information regarding the years 1870-1952. The growth rates illustrate the average annual growth rate for the period in question.

¹ Incl. Changes in stock and livestock. ² From 1921 onwards, figures include South Jutland; in 1921 the net domestic product at factor cost in South Jutland appears to have comprised 2-3 per cent of the total net domestic product at factor cost.

Source: Kjeld Bjerke and Niels Ussing: *Studier over Danmarks nationalprodukt 1870-1950*, Copenhagen 1958.

Table 392

Denmark and rest of the world (ROW)

	2001*	2002*	2003*	2004*
	DKK mio. in current prices			
Exports of goods	419 826	436 258	424 513	448 887
+ Income from tourism from ROW	33 905	38 002	35 364	34 636
+ Exports of other services	137 777	128 480	134 960	145 784
+ Compensation of employees from ROW	6 052	6 434	6 182	6 357
+ Subsidies from ROW	8 882	8 701	9 007	9 299
+ Property income from ROW	83 628	67 097	67 415	70 158
+ Current taxes on income, wealth, etc. from ROW	2 480	2 708	2 709	2 935
+ Other current transfers, etc. from ROW	20 705	17 686	18 920	18 314
Current income from ROW	713 255	705 366	699 071	736 372
+ Capital transfers, etc. from ROW	2 096	2 709	2 253	3 061
Total income from ROW	715 351	708 075	701 324	739 433
Imports of goods	371 725	390 472	374 336	408 189
+ Expenditure on tourism etc. in ROW	41 856	47 978	46 245	46 393
+ Imports of other services	92 405	87 355	88 160	100 867
+ Compensation of employees to ROW	6 198	6 768	6 772	7 336
+ Taxes on production and import	2 443	2 190	2 341	2 858
+ Property income to ROW	108 247	94 013	83 955	82 229
+ Current taxes on income, wealth, etc. to ROW	1 463	1 555	1 495	1 537
+ Other current transfers, etc. to ROW	48 456	47 456	49 915	51 145
Current expenditure to ROW, total	672 792	677 787	653 218	700 553
+ Capital transfers, etc. to ROW	2 318	1 964	2 307	2 978
Total expenditure to ROW	675 111	679 750	655 525	703 531
External balance of goods	48 101	45 786	50 177	40 698
External balance of services	37 421	31 149	35 919	33 160
External balance of goods and services	85 522	76 935	86 096	73 859
Current external balance	40 463	27 579	45 853	35 819
Net lending	40 240	28 324	45 799	35 902

Note. Figures are excluding Greenland and Faroe Islands.

For further information visit www.statbank.dk/nat01

Table 393

General government

	2001*	2002*	2003*	2004*
	DKK mio. in current prices			
Output	366 738	383 025	396 627	412 577
÷ Intermediate consumption	110 096	116 702	120 881	128 806
Gross value added, GVA	256 642	266 323	275 746	283 772
÷ Consumption of fixed capital	26 290	26 707	27 063	27 427
Net value added	230 352	239 616	248 683	256 345
Gross value added, GVA	256 642	266 323	275 746	283 772
÷ Other taxes less subsidies on production	1 291	662	178	- 794
Gross domestic product at factor cost	255 350	265 661	275 568	284 566
÷ Compensation of employees (paid by res. employers)	229 060	238 954	248 505	257 139
Gross operating surplus	26 290	26 707	27 063	27 427
+ Taxes on production and income	229 388	237 987	241 327	253 970
÷ Subsidies	28 647	30 292	29 963	31 773
+ Property income, net from ROW	-10 265	-9 415	-2 507	4 301
Gross primary income	216 766	224 987	235 920	253 925
+ Current taxes on income, wealth, etc.	397 808	399 912	411 832	435 344
+ Social contributions	42 719	36 707	38 106	39 118
+ Social benefits other than transfers in kind	•	•	•	•
+ Other current transfers	10 557	10 714	10 169	9 880
Gross total income	667 850	672 321	696 027	738 268
+ Current taxes on income, wealth, etc.	•	•	•	•
+ Social contributions	•	•	•	•
+ Social benefits other than transfers in kind	229 573	238 624	252 562	260 613
+ Other current transfers	34 829	35 383	35 453	36 841
Gross total expenditure	264 402	274 007	288 015	297 454
Gross disposable income	403 448	398 314	408 012	440 814
÷ Social transfers in kind	241 975	255 500	265 085	276 483
Gross adjusted disposable income	161 472	142 814	142 927	164 331
Gross disposable income	403 448	398 314	408 012	440 814
÷ Final consumption expenditure	343 273	358 509	371 838	385 626
Gross saving	60 175	39 805	36 173	55 188
Adjusted gross disposable income	161 472	142 814	142 927	164 331
÷ Actual collective consumption	101 298	103 009	106 754	109 143
Gross saving	60 175	39 805	36 173	55 188
+ Capital transfers, net	190	5 148	1 841	5 583
Changes in net worth due to saving and capital transfers	60 364	44 953	38 014	60 771
÷ Gross fixed capital formation	24 803	23 937	23 287	27 033
÷ Changes in inventories	11	33	- 2	1
÷ Acquisitions of non-financial non-produced assets, net.	-1 975	- 183	175	74
Net lending	37 525	21 164	14 555	33 663

For further information visit www.statbank.dk/nat03

Table 394

Corporate sector

	2000	2001*	2002*
DKK mio. in current prices			
Output	1 532 308	1 619 423	1 646 178
÷ Intermediate consumption	822 226	887 094	901 920
Gross value added, GVA	710 082	732 330	744 259
÷ Consumption of fixed capital	123 404	131 985	137 634
Net value added	586 678	600 345	606 625
Gross value added, GVA	710 082	732 330	744 259
÷ Other taxes less subsidies on production	544	2 007	1 481
Gross domestic product at factor cost,	709 538	730 322	742 778
÷ Compensation of employees (paid by resident producers)	417 677	437 717	447 037
Gross operating surplus and mixed income	291 862	292 605	295 741
+ Property income, net.	-5 720	-4 868	-2 911
÷ Financial intermediation services indirectly measured (FISIM)	36 813	40 158	42 002
Gross entrepreneurial income	343 693	324 911	310 493
Gross primary income	249 329	247 579	250 828
+ Current taxes on income, wealth, etc.	•	•	•
+ Social contributions	37 986	44 109	48 686
+ Social benefits other than transfers in kind	•	•	•
+ Other current transfers	47 804	50 818	53 724
Gross total income	335 118	342 506	353 238
+ Current taxes on income, wealth, etc.	30 707	41 449	38 581
+ Social contributions	•	•	•
+ Social benefits other than transfers in kind	28 944	30 361	32 657
+ Other current transfers	50 654	50 987	54 106
Gross total expenditure	110 305	122 797	125 344
Gross disposable income	224 813	219 708	227 894
÷ Adjustment for the change in net equity of households in pension funds reserves	9 042	13 747	16 028
Gross saving	215 771	205 961	211 865
+ Capital transfers, net.	1 437	713	-1 709
Changes in net worth due to saving and capital transfers	217 208	206 674	210 156
÷ Gross fixed capital formation, etc.	166 101	172 727	184 447
÷ Changes in inventories	10 509	270	903
÷ Acquisitions of non-financial non-produced assets, net.	- 880	1 188	- 599
Net lending	41 477	32 489	25 406

Note. Figures for the corporate sector and the household sector have been carried forward up to and including 2002. Sole proprietorships are included in the household sector.

For further information visit www.statbank.dk/nat03

Table 395

Household sector

	2000	2001*	2002*
	DKK mio. in current prices		
Output	284 212	294 711	293 170
÷ Intermediate consumption	105 097	109 648	108 209
Gross value added, GVA	179 115	185 063	184 961
÷ Consumption of fixed capital	50 605	53 012	54 195
Net value added	128 510	132 051	130 766
Gross value added, GVA	179 115	185 063	184 961
÷ Other taxes less subsidies on production	786	1 930	1 793
Gross domestic product at factor cost	178 329	183 133	183 167
÷ Compensation of employees (paid by resident producers)	46 063	47 869	48 927
Gross operating surplus and mixed income	132 266	135 264	134 240
+ Compensation of employees (received by resident employees)	680 430	714 501	734 584
+ Taxes on production and imports	•	•	•
+ Subsidies	•	•	•
+ Property income, net	-11 223	-9 486	-14 590
Gross primary income	801 472	840 279	854 234
+ Current taxes on income, wealth, etc.	•	•	•
+ Social contributions	•	•	•
+ Social benefits other than transfers in kind	250 348	260 009	271 271
+ Other current transfers	24 388	25 293	28 588
Gross total income	1 076 208	1 125 581	1 154 093
+ Current taxes on income, wealth, etc.	348 248	355 342	360 178
+ Social contributions	80 584	87 931	86 562
+ Social benefits other than transfers in kind	•	•	•
+ Other current transfers	28 149	27 572	32 129
Gross total expenditure	456 981	470 846	478 869
Gross disposable income	619 227	654 735	675 224
+ Social transfers in kind	222 831	241 975	255 500
Adjusted gross disposable income	842 058	896 711	930 724
Gross disposable income	619 227	654 735	675 224
+ Adjustment for the change in net equity in households in pension funds reserves	9 042	13 747	16 028
÷ Individual consumption expenditure	610 469	624 483	641 856
Gross saving	17 800	44 000	49 396
Adjusted gross disposable income	842 058	896 711	930 724
+ Adjustment for the change in net equity in households in pension funds reserves	9 042	13 747	16 028
÷ Actual individual consumption	833 300	866 458	897 356
Gross saving	17 800	44 000	49 396
+ Capital transfers, net	-1 343	-1 125	-2 694
Changes in net worth due to saving and capital transfer	16 457	42 875	46 702
÷ Gross fixed capital formation, etc.	70 523	70 878	64 414
÷ Changes in inventories	526	984	- 247
÷ Acquisitions of non-financial non-produced assets, net.	862	787	782
Net lending	-55 454	-29 774	-18 247

Note 1. Figures for the corporate sector and the household sector have been carried forward up to and including 2002. Sole proprietorships are included in the household sector.

Note 2. Households and non-profit institutions serving households (NPISH).

For further information visit www.statbank.dk/nat03

Table 396

Financial accounts. Denmark and rest of the world

	2000	2001*	2002*
current prices, mio. DKK			
Financial account (transactions)			
Financial assets	567 245	231 218	293 984
Monetary gold and Special Drawing Rights (SDRs)	2 142	- 1 826	1 631
Currency and deposits	93 434	- 17 500	85 200
Securities other than shares	27 406	81 444	34 372
Loans	153 989	95 314	124 097
Shares and other equity	231 093	37 304	20 954
Insurance technical reserves	- 128	1 499	- 1 798
Other accounts receivable	59 308	34 982	29 529
Financial liabilities	585 749	271 459	322 308
Monetary gold and Special Drawing Rights (SDRs)	•	•	•
Currency and deposits	- 13 058	42 483	44 697
Securities other than shares	62 550	83 739	27 384
Loans	148 571	29 726	186 121
Shares and other equity	301 406	126 150	- 2 601
Insurance technical reserves	- 5 304	- 694	1 274
Other accounts receivable	91 584	- 9 945	65 433
Net lending (+)/net borrowing (-)	- 18 504	- 40 241	- 28 324
Other changes in assets account			
Financial assets	- 162 508	- 136 936	- 238 183
Monetary gold and Special Drawing Rights (SDRs)	•	•	•
Currency and deposits	11 096	8 578	- 44 341
Securities other than shares	15 411	23 095	84 298
Loans	- 109 747	- 86 996	- 189 624
Shares and other equity*	- 29 441	- 48 618	- 68 049
Insurance technical reserves	38	- 274	- 258
Other accounts receivable	- 49 865	- 32 721	- 20 209
Financial liabilities	- 205 782	- 222 496	- 287 240
Monetary gold and Special Drawing Rights (SDRs)	•	•	•
Currency and deposits	9 329	- 103 987	9 852
Securities other than shares	37 803	- 21 655	133 553
Loans	- 40 731	- 7 240	- 142 635
Shares and other equity*	- 57 928	- 99 863	- 218 443
Insurance technical reserves	-	-	-
Other accounts receivable	- 154 253	10 248	- 69 568
Closing balance sheet			
Financial assets	2 255 428	2 351 535	2 405 705
Monetary gold and Special Drawing Rights (SDRs)	•	•	•
Currency and deposits	517 658	508 736	549 596
Securities other than shares	733 542	838 081	956 751
Loans	339 862	348 179	282 653
Shares and other equity*	594 286	582 972	535 877
Insurance technical reserves	12 210	13 435	11 379
Other accounts receivable	57 869	60 131	69 450
Financial liabilities	2 060 760	2 109 724	2 144 792
Monetary gold and Special Drawing Rights (SDRs)	•	•	•
Currency and deposits	399 426	337 921	392 470
Securities other than shares	410 543	472 628	633 565
Loans	248 909	271 395	314 881
Shares and other equity*	898 690	924 977	703 934
Insurance technical reserves	2 460	1 766	3 041
Other accounts receivable	100 733	101 036	96 901
Net financial assets	194 668	241 811	260 913

Note. The figures are non-consolidated, i.e. outstanding accounts between the individual units in the sector are not eliminated.

Financial accounts figures for the rest of the world are drawn up from the point of view of the rest of the world. Thus, a financial asset held by the rest of the world is a liability for Denmark and vice versa.

For further information visit www.statbank.dk/nat10, [nat11](http://www.statbank.dk/nat11) and [nat12](http://www.statbank.dk/nat12)

Table 397

Financial accounts. General government

	2000	2001*	2002*
current prices, mio. DKK			
Financial account (transactions)			
Financial assets	- 40	47 612	39 372
Monetary gold and Special Drawing Rights (SDRs)	•	•	•
Currency and deposits	- 4 099	8 981	4 478
Securities other than shares	9 918	- 2 203	58 812
Loans	3 966	2 946	8 420
Shares and other equity	6 925	35 771	- 45 213
Insurance technical reserves	- 5	- 26	- 37
Other accounts receivable	- 16 684	2 144	12 912
Financial liabilities	- 32 521	10 087	18 208
Monetary gold and Special Drawing Rights (SDRs)	•	•	•
Currency and deposits	1 388	892	47
Securities other than shares	- 30 620	- 9 908	12 145
Loans	2 226	3 490	- 580
Shares and other equity	•	•	•
Insurance technical reserves	•	•	•
Other accounts receivable	- 5 516	15 613	6 596
Net lending (+)/net borrowing (-)	32 481	37 525	21 164
Other changes in assets account			
Financial assets	8 194	- 12 936	- 30 682
Monetary gold and Special Drawing Rights (SDRs)	•	•	•
Currency and deposits	-	-	- 140
Securities other than shares	- 1 654	- 6 080	- 14 839
Loans	557	261	1
Shares and other equity*	10 006	- 7 161	- 13 733
Insurance technical reserves	-	-	-
Other accounts receivable	- 715	44	- 1 970
Financial liabilities	- 482	- 625	12 439
Monetary gold and Special Drawing Rights (SDRs)	•	•	•
Currency and deposits	-	-	-
Securities other than shares	1 914	1 278	4 330
Loans	- 2 455	- 1 866	8 109
Shares and other equity*	•	•	•
Insurance technical reserves	•	•	•
Other accounts receivable	59	- 36	- 36
Closing balance sheet			
Financial assets	772 610	807 286	815 976
Monetary gold and Special Drawing Rights (SDRs)	•	•	•
Currency and deposits	46 788	55 770	60 107
Securities other than shares	298 063	289 779	333 751
Loans	92 597	95 803	104 224
Shares and other equity*	254 785	283 395	224 449
Insurance technical reserves	446	420	383
Other accounts receivable	79 932	82 119	93 061
Financial liabilities	883 330	892 793	923 440
Monetary gold and Special Drawing Rights (SDRs)	•	•	•
Currency and deposits	9 257	10 149	10 195
Securities other than shares	744 988	736 358	752 833
Loans	65 744	67 368	74 898
Shares and other equity*	•	•	•
Insurance technical reserves	•	•	•
Other accounts receivable	63 341	78 918	85 514
Net financial assets	- 110 720	- 85 507	- 107 464

Note. The figures are non-consolidated, i.e. outstanding accounts between the individual units in the sector are not eliminated.

For further information visit www.statbank.dk/nat10, nat11 and nat 12

Table 398

Financial accounts. Corporate sector

	2000	2001*	2002*
current prices, mio. DKKk			
Financial account (transactions)			
Financial assets	532 231	698 332	525 355
Monetary gold and Special Drawing Rights (SDRs)	- 2 142	1 826	- 1 631
Currency and deposits	4 292	124 865	41 751
Securities other than shares	47 346	294 632	247 947
Loans	211 532	167 736	129 634
Shares and other equity	183 595	105 479	58 293
Insurance technical reserves	- 9 111	385	1 901
Other accounts receivable	96 719	3 409	47 460
Financial liabilities	490 284	667 716	504 085
Monetary gold and Special Drawing Rights (SDRs)	•	•	•
Currency and deposits	101 400	104 462	128 672
Securities other than shares	51 128	292 708	285 244
Loans	133 465	134 931	- 11 124
Shares and other equity	136 125	44 469	32 775
Insurance technical reserves	42 581	71 438	65 208
Other accounts receivable	25 586	19 708	3 309
Net lending (+)/net borrowing (-)	41 947	30 616	21 270
Other changes in assets account			
Financial assets	35 498	- 352 898	- 352 472
Monetary gold and Special Drawing Rights (SDRs)	250	297	197
Currency and deposits	- 1 437	- 112 831	54 732
Securities other than shares	6 340	3 735	42 137
Loans	- 2 174	- 38 278	- 10 121
Shares and other equity*	118 916	- 251 551	- 385 487
Insurance technical reserves	-	-	-
Other accounts receivable	- 86 398	45 731	- 53 931
Financial liabilities	214 061	- 416 381	- 514 859
Monetary gold and Special Drawing Rights (SDRs)	•	•	•
Currency and deposits	9 211	- 11 142	1 159
Securities other than shares	- 17 849	44 665	- 18 921
Loans	- 75 085	- 85 372	- 59 957
Shares and other equity*	267 359	- 325 592	- 405 305
Insurance technical reserves	11 220	- 42 672	- 25 921
Other accounts receivable	19 204	3 732	- 5 914
Closing balance sheet			
Financial assets	6 263 944	6 609 378	6 782 260
Monetary gold and Special Drawing Rights (SDRs)	5 211	7 333	5 899
Currency and deposits	843 857	855 890	952 373
Securities other than shares	1 463 207	1 761 574	2 051 658
Loans	2 033 871	2 163 329	2 282 842
Shares and other equity*	1 467 578	1 321 507	994 313
Insurance technical reserves	22 162	22 547	24 448
Other accounts receivable	428 058	477 198	470 726
Financial liabilities	7 181 344	7 432 679	7 421 906
Monetary gold and Special Drawing Rights (SDRs)	•	•	•
Currency and deposits	1 504 115	1 597 435	1 727 266
Securities other than shares	1 510 644	1 848 016	2 114 340
Loans	936 568	986 128	915 047
Shares and other equity*	2 090 797	1 809 675	1 437 146
Insurance technical reserves	869 019	897 784	937 071
Other accounts receivable	270 200	293 641	291 036
Net financial assets	- 917 400	- 823 301	- 639 646

Note. The figures are non-consolidated, i.e. outstanding accounts between the individual units in the sector are not eliminated.

For further information visit www.statbank.dk/nat10, nat11 and nat 12

Table 399

Financial accounts. Household sector

	2000	2001*	2002*
—————current prices, mio. DKK—————			
Financial account (transactions)			
Financial assets	60 501	87 957	90 051
Monetary gold and Special Drawing Rights (SDRs)	•	•	•
Currency and deposits	- 3 897	31 488	41 985
Securities other than shares	430	- 5 163	- 14 572
Loans	- 162	- 30	23
Shares and other equity	15 919	- 7 939	- 3 859
Insurance technical reserves	46 581	68 886	66 416
Other accounts receivable	1 631	714	58
Financial liabilities	116 424	115 857	104 161
Monetary gold and Special Drawing Rights (SDRs)	•	•	•
Currency and deposits	-	-	-
Securities other than shares	2 041	2 169	1 785
Loans	85 065	97 819	87 757
Shares and other equity	•	•	•
Insurance technical reserves	•	•	•
Other accounts receivable	29 318	15 868	14 620
Net lending (+)/net borrowing (-)	- 55 923	- 27 900	- 14 110
Other changes in assets account			
Financial assets	131 786	- 167 858	- 174 012
Monetary gold and Special Drawing Rights (SDRs)	•	•	•
Currency and deposits	8 881	- 10 874	761
Securities other than shares	1 770	3 537	7 367
Loans	-	-	-
Shares and other equity*	109 949	- 118 120	- 156 479
Insurance technical reserves	11 182	- 42 398	- 25 662
Other accounts receivable	4	- 3	1
Financial liabilities	4 922	- 31 426	- 5 888
Monetary gold and Special Drawing Rights (SDRs)	•	•	•
Currency and deposits	-	-	-
Securities other than shares	-	-	-
Loans	6 904	- 30 537	- 5 261
Shares and other equity*	•	•	•
Insurance technical reserves	•	•	•
Other accounts receivable	- 1 982	- 889	- 627
Closing balance sheet			
Financial assets	2 234 690	2 154 790	2 070 829
Monetary gold and Special Drawing Rights (SDRs)	•	•	•
Currency and deposits	504 495	525 109	567 855
Securities other than shares	193 049	191 423	184 218
Loans	159	129	152
Shares and other equity*	672 837	546 779	386 441
Insurance technical reserves	836 660	863 148	903 902
Other accounts receivable	27 490	28 202	28 261
Financial liabilities	1 396 028	1 480 459	1 578 733
Monetary gold and Special Drawing Rights (SDRs)	•	•	•
Currency and deposits	-	-	-
Securities other than shares	21 686	23 856	25 641
Loans	1 215 267	1 282 549	1 365 045
Shares and other equity*	•	•	•
Insurance technical reserves	•	•	•
Other accounts receivable	159 075	174 055	188 047
Net financial assets	838 662	674 331	492 096

Note. The figures are non-consolidated, i.e. outstanding accounts between the individual units in the sector are not eliminated.

Figures for the household sector includes figures for non-profit institutions serving households (NPISH).

For further information visit www.statbank.dk/nat10, [nat11](http://www.statbank.dk/nat11) and [nat 12](http://www.statbank.dk/nat12)

Table 400

Output by kind of activity

	Current prices				Constant 1995 prices			
	2001*	2002*	2003*	2004*	2001*	2002*	2003*	2004*
	DKK mio.							
Output, total	2 280 872	2 322 373	2 360 775	2 466 897	2 026 349	2 046 765	2 053 044	2 098 517
Of which: General government	366 737	383 024	396 627	412 578	314 798	321 738	324 566	328 107
Agriculture, fishing, quarrying	109 614	104 483	103 073	112 423	88 938	86 948	88 270	93 308
Agriculture, horticulture and forestry	69 130	62 592	62 323	66 676	66 289	63 998	65 659	69 377
Fishing	5 037	5 183	3 881	3 802	4 627	4 080	3 491	3 868
Mining and quarrying	35 446	36 709	36 868	41 945	18 021	18 870	19 120	20 063
Manufacturing	537 081	541 845	536 210	537 658	496 130	496 322	491 151	483 307
Manufacture of food, beverages, and tobacco	125 437	131 154	135 097	137 173	116 688	121 824	127 578	128 366
Manufacture of textiles and leather	14 954	13 505	12 924	11 926	14 403	12 993	12 352	11 433
Manufacture of wood products, printing and publishing	57 992	56 120	55 673	57 176	51 973	49 317	47 828	49 075
Manufacture of chemicals and plastic products	92 524	96 445	96 497	94 016	87 250	89 436	86 685	80 579
Manufacture of other non-metallic mineral products	19 407	19 721	19 338	20 267	17 502	17 566	16 831	17 671
Manufacture of basic metals and fabr. metal prod.	196 085	193 252	187 575	186 609	180 944	177 319	174 461	169 635
Manufacture of furniture; manufacturing n.e.c.	30 682	31 647	29 108	30 491	27 369	27 867	25 417	26 548
Electricity, gas and water supply	40 877	44 212	43 499	44 205	35 416	35 597	33 996	34 261
Construction	156 964	152 828	157 915	166 136	135 575	129 925	130 952	135 933
Wholesale and retail trade; hotels, restaurants	293 112	302 755	308 721	320 341	281 713	287 055	288 238	292 993
Sale and repair of motor vehicles, sale of auto. tuel	35 105	37 853	37 424	40 940	30 851	32 617	30 989	33 399
Wholesale except motor vehicles	151 094	155 402	158 395	159 506	153 415	156 178	157 602	155 919
Retail trade and repair work, except of motor vehicles	67 180	69 797	71 888	77 578	63 617	65 078	66 143	69 911
Hotels and restaurants	39 733	39 702	41 014	42 317	33 829	33 181	33 505	33 763
Transport, post and telecommunications	261 581	257 451	264 837	295 936	220 608	228 568	234 667	257 309
Transport	210 902	205 280	211 499	237 278	166 530	173 281	178 006	192 794
Post and telecommunications	50 679	52 171	53 337	58 658	54 079	55 287	56 661	64 515
Finance and business activities	436 961	451 613	463 191	486 088	390 932	395 963	396 598	407 228
Finance and insurance	96 369	100 877	106 986	107 478	88 547	90 872	93 729	91 188
Letting and sale of real estate	171 843	180 623	189 146	203 198	145 601	148 202	149 896	156 869
Business activities	168 748	170 114	167 059	175 412	156 784	156 889	152 973	159 171
Public and personal services	444 682	467 185	483 330	504 109	377 037	386 388	389 172	394 178
Public administration	118 372	121 551	125 307	129 601	100 599	100 490	101 232	101 793
Education	82 797	87 725	90 646	94 506	69 414	71 759	72 094	73 073
Human health activities	72 853	78 018	80 679	84 119	64 638	68 438	68 504	69 438
Social institutions etc.	88 226	93 544	96 748	100 832	75 778	77 123	78 131	79 160
Associations, culture and refuse disposal	82 434	86 347	89 949	95 052	66 609	68 579	69 211	70 714

For further information visit www.statbank.dk/nat07

Table 401

Gross value added, by kind of activity

	Current prices				Constant 1995 prices			
	2001*	2002*	2003*	2004*	2001*	2002*	2003*	2004*
	DKK mio.							
Gross value added, total	1 133 877	1 153 541	1 191 975	1 236 151	1 014 164	1 017 088	1 025 321	1 044 941
Of which: General government	256 641	266 323	275 746	284 905	218 463	222 054	223 441	223 150
Agriculture, fishing, quarrying	64 307	59 866	59 811	64 872	50 748	49 708	51 247	53 764
Agriculture, horticulture and forestry	31 097	25 522	26 259	26 936	33 751	32 607	34 400	35 939
Fishing	2 511	2 665	1 448	1 077	2 675	2 111	1 509	1 703
Mining and quarrying	30 698	31 679	32 104	36 859	14 322	14 991	15 337	16 122
Manufacturing	182 496	183 455	186 868	175 931	169 130	167 069	167 947	162 046
Manufacture of food, beverages, and tobacco	30 092	31 124	34 269	31 670	26 840	28 615	30 767	30 413
Manufacture of textiles and leather	4 931	4 245	4 212	3 992	4 738	4 141	4 017	3 899
Manufacture of wood products, printing and publishing	22 874	22 196	23 277	23 998	20 181	18 794	18 623	19 353
Manufacture of chemicals and plastic products	31 009	34 157	35 659	30 294	32 236	32 607	32 152	29 071
Manufacture of other non-metallic mineral products	7 581	7 143	7 480	7 621	7 314	6 827	6 676	7 130
Manufacture of basic metals and fabr. metal prod.	74 217	72 489	70 643	66 839	68 537	66 548	66 946	63 007
Manufacture of furniture; manufacturing n.e.c.	11 792	12 100	11 328	11 516	9 285	9 537	8 766	9 174
Electricity, gas and water supply	24 785	26 917	27 618	26 454	22 558	21 127	20 321	20 335
Construction	60 099	60 076	62 222	65 383	47 465	45 551	45 704	47 922
Wholesale and retail trade; hotels, restaurants	159 479	161 741	167 345	173 535	163 950	165 644	167 373	169 175
Sale and repair of motor vehicles, sale of auto. tuel	16 572	17 790	18 175	19 890	14 172	15 056	14 274	15 415
Wholesale except motor vehicles	81 909	82 466	84 826	84 992	93 944	94 885	96 344	94 728
Retail trade and repair work, except of motor vehicles	41 569	42 284	44 082	47 768	40 800	41 074	41 996	44 400
Hotels and restaurants	19 428	19 201	20 262	20 884	15 035	14 629	14 759	14 631
Transport, post and telecommunications	93 582	92 141	97 425	108 909	94 814	97 260	99 880	110 557
Transport	68 971	67 057	70 800	79 942	64 349	66 367	67 849	73 662
Post and telecommunications	24 611	25 084	26 625	28 966	30 465	30 894	32 030	36 895
Finance and business activities	282 415	291 533	301 504	318 360	250 521	253 217	254 579	260 606
Finance and insurance	60 058	62 142	66 962	66 805	56 350	57 387	59 638	57 128
Letting and sale of real estate	132 112	139 123	146 517	156 698	111 924	113 659	114 731	119 037
Business activities	90 245	90 268	88 024	94 857	82 247	82 171	80 211	84 442
Public and personal services	306 872	319 814	333 029	345 847	256 435	260 712	262 299	262 532
Public administration	77 117	79 803	82 235	84 122	64 184	64 683	64 771	63 764
Education	63 008	66 254	68 588	71 181	52 433	53 873	53 950	54 275
Human health activities	49 784	52 055	54 302	56 298	43 618	45 545	45 461	45 566
Social institutions etc.	67 933	71 475	74 169	76 966	58 045	58 416	59 160	59 503
Associations, culture and refuse disposal	49 031	50 227	53 735	57 281	38 155	38 196	38 958	39 424
Financial intermediation services indirectly measured (FISIM)	-40 157	-42 002	-43 847	-43 139	-41 457	-43 201	-44 028	-41 996

For further information visit www.statbank.dk/nat07

Table 402

Compensation of employees and gross operating surplus and mixed income, by kind of activity

	Compensation of employees				Gross operating surplus and mixed income			
	2001*	2002*	2003*	2004*	2001*	2002*	2003*	2004*
	DKK mio.							
Total	714 646	734 918	754 518	780 208	414 002	414 685	431 319	450 567
Of which: General government	229 060	238 954	248 506	257 139	26 290	26 707	27 063	27 427
Agriculture, fishing, quarrying	9 457	9 507	9 784	10 365	55 293	50 985	50 415	54 942
Agriculture, horticulture, and forestry	7 102	7 038	7 156	7 628	24 363	19 024	19 417	19 663
Fishing	1 032	1 053	1 026	942	1 520	1 658	461	176
Mining and quarrying	1 323	1 415	1 602	1 795	29 411	30 304	30 537	35 102
Manufacturing	127 476	128 342	129 383	128 325	56 217	56 535	58 655	48 855
Manufacture of food, beverages, and tobacco	20 848	21 707	21 887	21 730	9 496	9 718	12 628	10 203
Manufacture of textiles and leather	3 313	3 139	2 963	2 741	1 620	1 112	1 249	1 251
Manufacture of wood products, printing and publishing	17 823	16 981	16 771	16 515	5 120	5 305	6 571	7 553
Manufacture of chemicals and plastic products	16 996	17 877	19 001	19 431	14 055	16 343	16 693	10 904
Manufacture of other non-metallic mineral products	5 429	5 141	5 411	5 659	2 168	2 025	2 084	1 979
Manufacture of basic metals and fabr. metal prod.	55 470	56 037	55 917	54 944	19 539	17 360	15 515	12 731
Manufacture of furniture; manufacturing n.e.c.	7 596	7 461	7 433	7 305	4 218	4 671	3 914	4 233
Electricity, gas and water supply	5 002	5 269	5 723	5 829	19 711	21 581	21 816	20 545
Construction	47 879	47 684	47 579	49 905	12 146	12 356	14 549	15 386
Wholesale and retail trade; hotels, restaurants	110 053	113 538	118 344	123 401	49 425	48 314	48 950	50 101
Sale and repair of motor vehicles, sale of auto. tuel	12 114	12 525	13 145	13 695	4 371	5 188	4 932	6 096
Wholesale except motor vehicles	57 099	58 535	61 146	63 756	24 848	24 016	23 699	21 264
Retail trade and repair work, except of motor vehicles	30 111	31 360	32 500	33 724	11 477	10 982	11 586	14 055
Hotels and restaurants	10 729	11 119	11 553	12 226	8 729	8 128	8 733	8 686
Transport, post and telecommunications	51 557	52 412	54 814	56 738	43 125	41 019	43 694	53 323
Transport	36 986	37 534	39 281	40 514	33 395	31 119	32 934	40 924
Post and telecommunications	14 570	14 879	15 533	16 224	9 730	9 900	10 760	12 400
Finance and business activities	107 223	111 415	112 207	118 135	168 095	173 368	181 602	193 070
Finance and insurance	31 150	32 170	32 655	33 495	26 197	27 217	31 448	30 346
Letting and sale of real estate	8 853	9 327	9 752	10 308	118 208	125 034	131 270	141 499
Business activities	67 220	69 919	69 800	74 331	23 690	21 117	18 884	21 226
Public and personal services	255 999	266 751	276 684	287 510	50 146	52 531	55 486	57 483
Public administration	63 746	66 421	69 463	72 686	13 038	13 061	12 413	11 067
Education	54 765	57 190	59 306	60 896	7 709	8 530	8 716	9 699
Human health activities	40 311	41 970	42 840	45 512	9 026	9 655	10 980	10 291
Social institutions etc.	66 453	69 192	72 177	73 545	1 401	2 237	1 894	3 325
Associations, culture and refuse disposal	30 724	31 978	32 898	34 871	18 972	19 048	21 482	23 101
Financial intermediation services indirectly measured (FISIM)	-	-	-	-	-40 157	-42 002	-43 847	-43 139

For further information visit www.statbank.dk/nat07

Table 403

Hours worked, by kind of activity

	Total actual hours worked				Actual hours worked for employees			
	2001*	2002*	2003*	2004*	2001*	2002*	2003*	2004*
	1 000 hours							
Total	4 256 353	4 225 860	4 181 225	4 183 381	3 744 504	3 715 570	3 676 101	3 680 564
Of which: General government	1 174 151	1 182 520	1 184 746	1 187 469	1 174 151	1 182 520	1 184 746	1 187 469
Agriculture, fishing, quarrying	214 748	213 028	208 836	207 963	60 580	60 098	59 107	60 523
Agriculture, horticulture, and forestry	196 859	194 575	190 070	189 045	50 382	49 652	48 309	49 673
Fishing	11 898	12 220	12 007	11 653	4 372	4 371	4 190	3 717
Mining and quarrying	5 990	6 233	6 759	7 264	5 826	6 075	6 609	7 133
Manufacturing	732 000	704 618	679 342	655 036	688 695	661 215	636 031	611 710
Manufacture of food, beverages, and tobacco	116 704	115 662	111 063	106 854	112 890	111 939	107 424	103 236
Manufacture of textiles and leather	25 658	24 135	22 417	20 675	20 554	18 923	17 217	15 460
Manufacture of wood products, printing and publishing	99 641	93 238	89 379	86 043	90 888	84 334	80 431	77 053
Manufacture of chemicals and plastic products	81 478	81 819	82 219	81 063	80 260	80 603	80 995	79 845
Manufacture of other non-metallic mineral products	32 010	29 265	29 056	29 363	29 948	27 237	27 053	27 396
Manufacture of basic metals and fabr. metal prod.	322 893	309 855	296 618	284 569	305 898	292 766	279 486	267 368
Manufacture of furniture; manufacturing n.e.c.	53 617	50 644	48 591	46 469	48 256	45 414	43 426	41 353
Electricity, gas and water supply	22 384	23 074	23 510	23 172	22 384	23 074	23 510	23 172
Construction	316 883	310 169	303 700	308 190	263 303	259 208	252 392	255 982
Wholesale and retail trade; hotels, restaurants	736 438	742 920	749 645	757 973	622 594	626 381	635 489	645 079
Sale and repair of motor vehicles, sale of auto. tuel	97 800	98 510	98 716	99 340	78 484	78 525	79 362	80 327
Wholesale except motor vehicles	274 782	275 420	279 283	281 965	253 745	254 744	259 142	262 023
Retail trade and repair work, except of motor vehicles	262 008	264 762	266 524	269 669	208 308	210 236	213 026	216 752
Hotels and restaurants	101 848	104 228	105 121	106 999	82 059	82 876	83 959	85 977
Transport, post and telecommunications	300 209	291 789	295 694	297 391	278 180	271 187	275 453	277 508
Transport	220 763	215 007	218 667	218 964	198 733	194 405	198 426	199 082
Post and telecommunications	79 446	76 782	77 027	78 427	79 446	76 782	77 027	78 427
Finance and business activities	559 551	561 546	544 889	553 502	471 889	472 755	455 298	463 140
Finance and insurance	100 699	99 266	95 527	94 961	100 699	99 266	95 527	94 961
Letting and sale of real estate	69 424	69 971	69 847	71 158	52 587	52 922	52 799	54 140
Business activities	389 428	392 309	379 514	387 383	318 603	320 566	306 972	314 039
Public and personal services	1 374 140	1 378 716	1 375 610	1 380 155	1 336 879	1 341 652	1 338 820	1 343 449
Public administration	299 584	301 893	302 775	304 587	299 567	301 876	302 758	304 566
Education	278 605	278 909	278 186	277 429	274 438	274 711	273 945	273 182
Human health activities	200 820	200 767	198 011	202 108	189 666	189 893	187 360	191 587
Social institutions etc.	399 720	402 908	403 399	400 532	399 720	402 908	403 399	400 532
Associations, culture and refuse disposal	195 410	194 238	193 239	195 500	173 488	172 264	171 358	173 582

For further information visit www.statbank.dk/nat18

Table 404

Total employed and wage and salary earners, by kind of activity

	Total employed ¹				Of which, wage and salary earners ¹			
	2001*	2002*	2003*	2004*	2001*	2002*	2003*	2004*
	number of persons							
Total	2 792 190	2 782 108	2 756 703	2 758 443	2 595 073	2 586 077	2 561 632	2 564 253
Of which: General government	847 546	855 917	855 895	857 382	847 546	855 917	855 895	857 382
Agriculture, fishing, quarrying	107 194	106 589	104 405	104 355	50 738	50 770	50 010	50 795
Agriculture, horticulture, and forestry	97 280	96 612	94 360	94 338	43 872	43 854	43 032	43 890
Fishing	6 410	6 363	6 178	5 867	3 431	3 366	3 170	2 815
Mining and quarrying	3 504	3 614	3 867	4 150	3 435	3 550	3 808	4 090
Manufacturing	453 799	437 995	424 153	408 565	438 346	422 440	408 437	392 847
Manufacture of food, beverages, and tobacco	79 001	78 706	76 345	73 440	77 447	77 152	74 831	71 934
Manufacture of textiles and leather	15 083	14 036	12 979	11 868	13 217	12 134	11 049	9 933
Manufacture of wood products, printing and publishing	65 937	61 416	58 997	56 637	62 864	58 308	55 816	53 443
Manufacture of chemicals and plastic products	50 385	50 719	51 428	50 698	49 931	50 261	50 956	50 230
Manufacture of other non-metallic mineral products	19 422	17 713	17 768	17 968	18 653	16 948	17 007	17 220
Manufacture of basic metals and fabr. metal prod.	192 082	185 347	177 756	170 363	186 211	179 424	171 727	164 308
Manufacture of furniture; manufacturing n.e.c.	31 889	30 058	28 880	27 590	30 023	28 213	27 051	25 780
Electricity, gas and water supply	13 882	14 186	14 610	14 402	13 882	14 186	14 610	14 402
Construction	170 147	167 469	164 279	166 696	149 616	146 966	143 236	145 288
Wholesale and retail trade; hotels, restaurants	521 064	524 236	527 959	534 371	475 662	479 428	484 181	491 078
Sale and repair of motor vehicles, sale of auto. tuel	59 545	59 602	59 766	60 307	52 412	52 562	53 073	53 731
Wholesale except motor vehicles	176 798	177 188	178 796	180 600	169 136	169 701	171 588	173 463
Retail trade and repair work, except of motor vehicles	201 618	203 872	205 330	207 709	180 370	182 926	184 794	187 409
Hotels and restaurants	83 103	83 574	84 067	85 754	73 744	74 239	74 726	76 475
Transport, post and telecommunications	183 525	178 932	179 743	180 963	173 869	169 397	170 409	171 791
Transport	129 939	127 062	128 725	129 039	120 283	117 527	119 391	119 867
Post and telecommunications	53 586	51 870	51 018	51 924	53 586	51 870	51 018	51 924
Finance and business activities	361 963	362 772	352 432	357 859	329 188	329 808	318 515	323 657
Finance and insurance	76 530	75 595	73 333	72 937	76 530	75 595	73 333	72 937
Letting and sale of real estate	41 671	42 065	42 303	43 188	35 444	35 818	36 060	36 958
Business activities	243 762	245 112	236 796	241 734	217 214	218 395	209 122	213 761
Public and personal services	980 616	989 929	989 122	991 232	963 772	973 082	972 234	974 396
Public administration	197 985	200 003	201 537	202 628	197 978	199 996	201 530	202 621
Education	198 605	200 455	200 697	200 024	197 122	198 966	199 156	198 481
Human health activities	149 111	150 054	147 124	150 131	143 890	144 820	142 011	145 077
Social institutions etc.	298 487	302 374	303 334	300 420	298 487	302 374	303 334	300 420
Associations, culture and refuse disposal	136 428	137 043	136 430	138 029	126 295	126 926	126 203	127 797

 For further information visit www.statbank.dk/nat18

Table 405

Private consumption expenditure

	Current prices				1995 prices			
	2000	2001*	2002*	2004*	2001*	2002*	2003*	2004*
	DKK mio.							
Total private consumption expenditure	624 483	641 856	659 259	695 326	547 960	551 375	556 076	580 098
Household consumption on Danish territory	616 185	632 157	647 344	681 459	545 362	548 200	550 189	573 173
Food	68 408	69 092	70 813	71 688	62 226	61 737	62 092	63 268
Beverages and tobacco	38 637	38 465	39 147	39 027	33 844	33 325	34 393	36 044
Clothing and footwear	31 330	32 067	33 309	35 523	30 600	30 706	31 538	33 644
Housing	136 502	141 852	148 851	155 211	113 409	114 068	115 485	116 778
Electricity, gas and other fuels	39 479	40 011	39 399	39 532	30 030	29 497	28 724	28 733
Furnishing, household equipment etc.	36 142	36 890	38 527	41 542	33 126	33 278	34 405	36 181
Medical products and health services	16 414	17 249	17 960	18 772	15 757	16 321	16 970	17 817
Purchase of vehicles	22 185	26 342	23 508	32 568	21 567	24 870	21 201	28 631
Other transport and communication	60 838	63 128	65 486	69 541	53 286	54 277	55 534	58 000
Recreation and culture	65 435	65 124	66 189	70 664	67 486	67 719	68 334	72 033
Other goods and services	100 815	101 938	104 155	107 393	84 032	82 402	81 514	82 044
Balance of tourism, net	-2 339	-1 739	- 347	544	-5 995	-5 790	-3 342	-2 674
Income from tourism	-33 905	-38 002	-35 364	-34 636	-29 859	-32 763	-29 805	-28 952
Expenditure on tourism	31 565	36 263	35 017	35 181	23 864	26 974	26 463	26 279
Membership organizations etc.	10 637	11 438	12 263	13 322	8 594	8 965	9 229	9 598
Goods	311 136	318 899	322 732	341 518	288 254	292 576	293 529	311 702
Durable	59 621	63 911	61 700	72 794	66 299	71 523	68 906	78 821
Semi-durable	69 238	70 733	74 368	80 343	66 299	66 507	69 050	74 371
Non-durable	182 277	184 256	186 664	188 381	155 656	154 546	155 572	158 509
Services	305 049	313 258	324 612	339 941	257 107	255 623	256 661	261 471
Housing	136 502	141 852	148 851	155 211	113 409	114 068	115 485	116 778
Other services	168 547	171 406	175 761	184 731	143 699	141 555	141 176	144 693

For further information visit www.statbank.dk/nat05

Table 406

Capital formation by type of goods

	Current prices				1995 prices			
	2001*	2002*	2003*	2004*	2001*	2002*	2003*	2004*
	DKK mio.							
Machines and equipment	77 923	83 057	80 627	87 810	98 662	107 579	107 553	118 793
Transport	33 868	34 444	34 504	34 075	29 344	29 006	31 210	29 084
Buildings; facilities and installations	128 096	125 027	130 198	136 993	108 724	104 592	106 414	110 914
Housing	53 371	57 363	64 786	72 593	46 246	48 998	54 486	60 380
Other buildings	49 401	43 548	39 278	39 657	42 050	36 505	31 712	32 335
Civil engineering works	25 323	24 116	26 134	24 743	20 428	19 089	20 215	18 200
Livestock	- 55	- 182	- 288	- 481	- 48	- 183	108	176
Valuables, net	1 806	1 810	1 755	1 895	1 723	1 688	1 608	1 710
Purchased and own-account computer software	24 069	26 063	25 327	24 803	29 753	31 788	31 887	31 293
Entertainment, literary and artistic originals	1 570	1 564	1 561	1 661	1 405	1 375	1 349	1 414
Mineral exploration	1 132	1 015	685	787	877	766	504	531
Total gross fixed capital formation	268 408	272 799	274 369	287 542	270 440	276 612	280 632	293 915
Of which: General government acquisition of new fixed assets	25 145	24 201	23 789	25 131	24 069	22 861	22 786	24 282
+ Change in stocks, net	1 265	689	-1 027	4 120	1 162	868	-1 115	3 608
Total gross capital formation	269 673	273 487	273 342	291 662	271 602	277 481	279 518	297 523
- Consumption of fixed capital	211 287	218 536	222 182	222 018	209 138	219 006	223 889	228 948
Total net capital formation	58 386	54 951	51 160	69 644	62 464	58 475	55 629	68 575

 For further information visit www.statbank.dk/nat04

Table 407

Gross fixed capital formation by kind of activity and by type of goods

	Current prices				1995-prices			
	1997	1998	1999	2000	1997	1998	1999	2000
	DKK mio.							
Total gross fixed capital formation¹	218 810	238 293	238 790	256 303	216 509	238 224	241 671	258 921
Machinery, equipment and transport equipment	91 598	99 857	100 303	107 060	92 914	104 889	110 241	119 021
Building and construction	108 252	116 481	113 906	123 314	102 503	107 409	102 017	108 820
Other gross fixed capital formation.	18 960	21 955	24 582	25 928	21 093	25 925	29 413	31 080
Hereby: General government	21 167	19 545	20 057	21 460	20 628	19 119	19 910	21 141
Machinery, equipment and transport equipment	7 333	6 751	6 946	6 032	7 621	7 423	8 253	7 542
Building and construction	12 525	11 438	11 604	13 170	11 500	10 064	9 813	10 834
Other gross fixed capital formation.	1 309	1 356	1 507	2 258	1 506	1 632	1 844	2 765
Agriculture, fishing, quarrying	14 839	14 904	14 599	15 120	14 228	14 104	13 694	13 944
Machinery, equipment and transport equipment	7 979	6 887	6 953	7 313	7 742	6 671	6 781	7 082
Building and construction	6 067	7 245	6 595	6 786	5 694	6 639	5 859	5 868
Other gross fixed capital formation.	794	771	1 052	1 020	792	794	1 054	994
Manufacturing	29 739	30 336	30 438	33 012	29 767	30 790	31 511	34 397
Machinery, equipment and transport equipment	21 702	20 700	20 987	22 378	21 618	20 954	21 840	23 606
Building and construction	5 281	6 459	6 284	7 014	5 047	6 016	5 803	6 352
Other gross fixed capital formation.	2 755	3 177	3 167	3 621	3 102	3 819	3 868	4 438
Electricity, gas and water supply	9 681	10 181	7 950	8 084	9 199	9 460	7 284	7 221
Machinery, equipment and transport equipment	1 409	1 938	1 453	1 650	1 379	1 839	1 423	1 655
Building and construction	8 161	8 093	6 415	6 357	7 694	7 439	5 761	5 473
Other gross fixed capital formation.	111	150	82	76	125	181	101	94
Construction	5 531	4 938	6 214	5 819	5 559	4 953	6 238	5 825
Machinery, equipment and transport equipment	4 151	4 014	4 382	4 024	4 088	3 878	4 280	3 874
Building and construction	689	78	932	783	658	61	862	709
Other gross fixed capital formation.	691	846	900	1 012	814	1 014	1 096	1 241
Wholesale and retail trade; hotels, restaurants	22 250	22 324	21 998	26 403	22 883	23 546	24 000	29 282
Machinery, equipment and transport equipment	16 440	17 053	17 265	19 182	17 009	18 137	19 022	21 995
Building and construction	4 214	3 282	2 628	4 886	4 024	3 021	2 412	4 425
Other gross fixed capital formation.	1 595	1 990	2 105	2 335	1 850	2 388	2 565	2 863
Transport, post and telecommunications	31 990	37 594	33 972	40 029	31 228	36 640	33 836	38 127
Machinery, equipment and transport equipment	17 351	21 060	21 956	26 401	16 966	20 785	22 227	25 121
Building and construction	12 464	14 410	9 591	10 402	11 757	13 301	8 648	9 050
Other gross fixed capital formation.	2 176	2 124	2 425	3 226	2 505	2 555	2 961	3 956
Finance and business activities	73 450	85 255	91 517	94 995	72 987	86 333	92 607	96 773
Machinery, equipment and transport equipment	10 592	14 542	13 102	13 492	11 842	17 951	18 380	20 414
Building and construction	55 280	61 173	67 125	71 203	52 745	56 896	60 398	63 741
Other gross fixed capital formation.	7 578	9 540	11 290	10 300	8 401	11 486	13 829	12 619
Public and personal services	31 330	32 761	32 102	32 841	30 658	32 398	32 501	33 352
Machinery, equipment and transport equipment	11 974	13 663	14 205	12 620	12 270	14 674	16 288	15 274
Building and construction	16 096	15 741	14 336	15 883	14 884	14 036	12 274	13 202
Other gross fixed capital formation.	3 260	3 357	3 561	4 338	3 504	3 688	3 939	4 875

Note. Due to extraordinary revisions for construction, it has not been possible to show detailed figures for the investments of industries. 1 Ekskl. purchasing and realization of valuables.

¹ Ekskl. acquisitions less disposals of valuables.

For further information visit www.statbank.dk/nat06

Table 408 (continues) **Supply of goods 2000**

SITC	Danish turnover	Imports incl. customs duties	Exports	Domestic supply	Used for			
					Inter-mediate consumption	Household consumption	Government consumption ¹	Capital formation, stocks
DKK mio.								
0 Food and live animals	145 059	33 926	70 250	108 735	75 781	31 268	11	1 675
00 Live animals other than animals of division 03	21 620	116	949	20 787	20 503	59	-	224
01 Meat and meat preparations	36 505	3 908	26 380	14 033	5 338	8 735	-	- 39
02 Dairy products and birds' eggs	30 167	2 115	10 975	21 306	15 523	5 564	-	219
03 Fish (not marine mammals), crustaceans, molluscs, and aquatic invertebrates preparations and preparations thereof	12 359	9 232	12 742	8 849	7 734	582	-	533
04 Cereals and cereals preparations	16 245	2 651	5 725	13 171	9 464	3 323	-	385
05 Vegetables and fruit	6 808	5 379	1 617	10 571	5 045	5 487	-	39
06 Sugars, sugar preparations and honey	4 386	1 297	2 306	3 377	1 824	1 457	-	97
07 Coffee, tea, cocoa, spices and manufactures thereof	1 973	2 475	844	3 604	1 022	2 505	-	78
08 Feeding stuff for animals (not including unmilled cereals)	7 040	5 096	3 262	8 874	7 769	1 040	-	64
09 Miscellaneous edible products and preparations	7 954	1 658	5 450	4 162	1 561	2 515	11	75
1 Beverages and tobacco	10 953	4 801	3 836	11 917	3 840	8 151	-	- 74
11 Beverages	8 274	3 894	2 541	9 628	3 159	6 577	-	- 108
12 Tobacco and tobacco manufactures	2 678	906	1 295	2 289	681	1 574	-	34
2 Crude materials, inedible, except fuels	18 347	12 143	12 247	18 242	17 062	2 533	-	-1 353
21 Hides, skins and furskins, raw	2 651	737	3 367	21	264	-	-	- 243
22 Oil seeds and oleaginous fruit	653	716	77	1 292	1 311	5	-	- 25
23 Crude rubber (including synthetic and reclaimed)	43	215	22	236	236	-	-	- 0
24 Cork and wood	3 128	4 831	995	6 965	6 147	650	-	168
25 Pulp and waste paper	135	437	66	506	509	-	-	- 3
26 Textile fibres (other than wool tops and other combed wool) and their wastes (not manufactured into yarn or fabric)	879	291	678	492	477	13	-	1
27 Crude fertilizers other than those of division 56, and crude minerals (excluding coal, petroleum and precious stones)	2 112	1 179	627	2 664	2 654	83	-	- 73
28 Metalliferous ores and metal scrap	354	452	811	- 5	1 209	- 21	-	-1 192
29 Crude animals and vegetable materials, n.e.s.	8 390	3 284	5 603	6 071	4 253	1 803	-	15
3 Mineral fuels, lubricants and related materials	79 758	27 181	35 113	71 827	55 860	12 839	-	3 128
32 Coal, coke and briquettes	240	1 768	76	1 932	1 971	55	-	- 94
33 Petroleum, petroleum products and related materials	50 293	24 852	30 981	44 163	35 821	5 094	-	3 249
34 Gas, natural and manufactured	15 550	33	3 133	12 449	10 458	2 018	-	- 27
35 Electric current	13 677	528	923	13 282	7 609	5 673	-	-
4 Animal and vegetable oils, fats and waxes	2 345	1 506	1 247	2 604	2 409	169	-	26
41 Animal oils and fats	749	250	536	464	430	36	-	- 2
42 Fixed vegetable fats and oils, crude, refined or fractionated	733	811	372	1 173	1 069	105	-	- 2
43 Animal or vegetable fats and oils, processed; waxes of animal or vegetable origin, inedible mixtures or preparations of animal or vegetable fats and oils, n.e.s.	862	444	339	967	909	27	-	31
5 Chemicals and related products, n.e.c	53 725	36 508	43 685	46 548	39 349	4 791	2 476	- 69
51 Organic chemicals	7 385	3 414	6 297	4 503	4 361	62	-	80
52 Inorganic chemicals	722	2 324	495	2 551	2 542	18	-	- 9
53 Dyeing, tanning and colouring materials	4 886	3 187	3 295	4 778	4 676	86	-	16
54 Medical and pharmaceutical products	23 448	7 670	22 033	9 085	4 661	2 156	2 476	- 208
55 Essential oils and resinoids and perfume materials; toilet, polishing and cleaning preparations	2 667	3 719	2 264	4 122	1 923	2 216	-	- 16

¹ Goods for producing services in the general government sector are included in "Intermediate consumption". Goods for public consumption mainly cover subsidy schemes, e.g. for medical products.

Table 408 (continued) Supply of goods 2000

SITC	Danish turnover	Imports incl. customs duties	Exports	Domestic supply	Used for			
					Inter-mediate consumption	Household consumption	Government consumption ¹	Capital formation, stocks
DKK mio.								
56 Fertilizers (other than those of group 272)	1 217	916	579	1 555	1 573	10	-	- 28
57 Plastics in primary forms	918	6 851	894	6 874	6 884	0	-	- 10
58 Plastics in non-primary forms	5 442	4 399	2 880	6 961	6 766	103	-	92
59 Chemical materials and products, n.e.s.	7 039	4 028	4 948	6 118	5 962	140	-	16
6 Manufactured goods classified chiefly by material	77 515	59 630	38 197	98 948	88 697	5 310	291	4 649
61 Leather, leather manufactures, n.e.s. and dressed furskins	203	479	315	367	269	87	-	10
62 Rubber manufactures, n.e.s.	1 509	2 910	1 307	3 112	2 878	154	-	81
63 Cork and wood manufactures (excluding furniture)	10 625	4 024	4 038	10 611	9 727	402	-	482
64 Paper, paperboard and articles of paper pulp, of paper or of paperboard	9 447	10 068	4 095	15 420	14 430	923	291	- 224
65 Textile yarn, fabrics, made-up articles, n.e.s., and related products	6 779	8 899	6 378	9 300	7 069	1 693	-	538
66 Non-metallic mineral manufactures, n.e.s.	16 092	5 538	5 550	16 079	15 114	697	-	268
67 Iron and steel	4 995	10 916	4 746	11 165	11 092	1	-	72
68 Non-ferrous metals	3 061	5 652	2 214	6 498	6 469	0	-	29
69 Manufactures of metal, n.e.s.	24 805	11 144	9 553	26 396	21 649	1 354	-	3 393
7 Machinery and transport equipment	102 291	132 590	96 997	137 884	59 977	17 927	279	59 700
71 Power generating machinery and equipment	14 237	5 737	10 213	9 761	7 639	58	-	2 064
72 Machinery specialized for particular industries	13 895	12 267	12 453	13 709	3 236	249	-	10 223
73 Metal working machinery	1 199	1 830	1 027	2 002	550	-	-	1 452
74 General industrial machinery and equipment, n.e.s. and machine parts, n.e.s.	30 347	15 446	22 178	23 616	14 375	115	-	9 126
75 Office machines; automatic data processing machines	1 534	18 624	6 441	13 717	2 546	1 524	6	9 641
76 Telecommunications and sound recording and reproducing apparatus and equipment	10 860	19 534	17 035	13 359	7 663	3 014	-	2 682
77 Electrical machinery, apparatus and appliances, n.e.s. and electrical parts thereof (including non-electrical counterparts n.e.s. of electrical household type equipment)	16 234	21 950	11 948	26 236	19 220	2 780	1	4 235
78 Road vehicles (including air-cushion vehicles)	8 527	23 340	8 293	23 574	4 356	9 995	272	8 951
79 Other transport equipment	5 458	13 862	7 410	11 909	392	192	-	11 326
8 Miscellaneous manufactured articles	87 509	54 054	61 680	79 882	42 205	23 579	710	13 388
81 Prefabricated buildings, sanitary plumbing, heating and lighting fixtures and fittings, n.e.s.	4 162	2 147	2 071	4 238	1 966	790	7	1 475
82 Furniture and parts thereof; bedding, mattresses, mattress supports, cushions and similar stuffed furnishings	21 492	5 565	14 198	12 859	2 626	3 601	110	6 523
83 Travel goods, handbags and similar containers	87	787	228	646	50	534	-	62
84 Articles of apparel and clothing accessories	6 577	18 693	13 162	12 108	2 131	9 932	-	46
85 Footwear	1 223	3 410	1 770	2 864	786	1 928	6	144
87 Professional, scientific and controlling instruments and apparatus n.e.s.	10 163	5 351	8 859	6 655	4 046	98	11	2 501
88 Photographic apparatus, equipment and supplies and optical goods, n.e.s.; watches and clocks	5 014	3 126	4 352	3 788	2 636	836	31	285
89 Miscellaneous manufactured articles, n.e.c	38 791	14 975	17 041	36 725	27 966	5 861	545	2 353
9 Commodities and transactions not classified elsewhere in SITC	10	1 417	104	1 323	1 350	- 30	-	3
93 Special transactions and commodities not classified according to kind	-	1 283	72	1 211	1 211	-	-	-
96 Coin (other than gold coin) not being legal tender	10	5	1	14	0	4	-	10
97 Gold, non-monetary (excluding gold ores and concentrates)	-	129	31	98	139	- 34	-	- 7

Table 409

Gross domestic product by counties 2003

	Gross domestic product	Gross domestic product per capita ¹	Gross domestic product per capita ¹	Annual average real growth 1993-2003*
	current prices DKK mio.	current prices DKK 1 000	index the whole country = 100	per cent
Whole country²	1 396 608	259,1	100	2,5
Copenhagen region ³	564 892	310,3	120	2,9
Copenhagen and Frederiksberg Municipalities	244 824	412,9	159	2,6
Copenhagen County	200 458	324,3	125	3,1
Frederiksborg County	76 368	204,8	79	3,3
Roskilde County	43 242	182,8	71	3,3
West Zealand County	58 682	194,6	75	1,1
Storstrøm County	47 119	180,1	70	2,1
Bornholm County	8 318	189,4	73	0,9
Funen County	99 271	209,4	81	1,9
South Jutland County	58 488	231,1	89	2,3
Ribe County	54 616	243,3	94	1,5
Vejle County	85 202	240,4	93	2,7
Ringkøbing County	69 615	253,2	98	2,4
Århus County	147 919	227,3	88	2,4
Viborg County	55 157	235,1	91	2
North Jutland County	108 414	218,8	84	1,7
Outside the counties ⁴	38 917	•	•	8,6

¹ Outside the counties are only entered into GDP per capita for the whole country. ² Figures for the whole country correspond to earlier figures – National accounts, December version 2003. ³ Copenhagen and Frederiksberg Municipalities, Copenhagen County, Frederiksborg County and Roskilde County. ⁴ Activities that can't be allocated to any county. Primary activities in the North Sea.

For further information visit www.statbank.dk/rnat1

Table 410

Input-output table 2000

	Input in main groups of industries									Total
	Agriculture, fishing, quarrying	Manufacturing	Electricity, gas and water supply	Construction	Wholesale and retail trade; hotels, restaurants	Transport, post and telecommunications	Finance and business activities	Public and personal services	Financial intermediation services indirectly measured, FISIM	
	DKK mio. in current prices									
Agriculture, fishing, quarrying.	12 128	47 517	4 893	1 431	400	28	106	1 264	-	67 766
Manufacturing	7 718	84 248	694	31 212	15 108	7 162	15 584	9 774	-	171 500
Electricity, gas and water supply	1 018	5 689	2 652	101	2 910	795	1 097	3 547	-	17 808
Construction	1 144	2 047	2 187	642	1 522	5 167	15 415	5 681	-	33 805
Wholesale and retail trade; hotels, restaurants	5 104	30 226	301	14 731	11 433	7 832	5 525	7 608	-	82 760
Transport, post and telecommunications	1 491	15 169	336	2 215	28 873	31 033	15 584	15 379	-	110 080
Finance and business activities	5 039	24 715	1 722	19 323	36 320	13 625	57 944	29 879	36 813	225 380
Public and personal services	1 229	4 965	406	534	4 464	3 265	9 478	21 031	-	45 371
Total use of domestic products	34 870	214 576	13 190	70 190	101 028	68 907	120 733	94 163	36 813	754 470
Imports incl. customs duties	8 254	117 047	2 457	16 144	16 174	84 293	10 294	13 000	-	267 662
Taxes on products, net and VAT	- 68	2 393	124	1 219	4 958	4 247	11 387	19 072	-	43 332
Uses at market prices	43 056	334 016	15 771	87 553	122 160	157 446	142 413	126 235	36 813	1 065 464
Other taxes linked to production, net.	- 626	-1 319	53	11	- 154	-1 189	5 490	342	-	2 607
Compensation of employees	9 291	122 752	5 109	45 842	106 288	49 882	98 674	242 531	-	680 370
Gross operating surplus and mixed income	56 584	60 180	18 382	13 286	50 149	41 936	160 916	48 292	-36 813	412 913
Gross output at basic prices	108 305	515 629	39 315	146 693	278 444	248 075	407 493	417 400		- 2 161 355

Table 410 (continued)

	Final demand							Total	
	Private consumption	Government consumption	Gross fixed capital formation			Increase in stocks	Exports		Total
			Machinery and transport equipment	Building and construction	Other capital formations				
	DKK mio. in current prices								
Agriculture, fishing, quarrying.	3 290	1 471	1	-	765	397	34 616	40 539	108 305
Manufacturing	47 884	898	28 859	-	1 811	7 309	257 369	344 129	515 629
Electricity, gas and water supply	17 738	-	-	-	50	48	3 671	21 507	39 315
Construction	6 370	6 009	101	100 341	50	-	19	112 889	146 693
Wholesale and retail trade; hotels, restaurants	125 962	1 939	17 718	-	2 924	146	46 995	195 684	278 444
Transport, post and telecommunications	29 194	562	-	-	1 079	0	107 160	137 995	248 075
Finance and business activities	141 896	4 327	1 737	6 337	12 696	0	15 120	182 113	407 493
Public and personal services	64 581	303 679	6	145	2 964	0	654	372 028	417 400
Total use of domestic products	436 914	318 885	48 421	106 823	22 338	7 899	465 604	1 406 885	2 161 355
Imports incl. custom duties	91 346	2 894	47 555	-	4 951	3 392	71 825	221 963	489 625
Tourism revenues etc.	-30 297	-	-	-	-	-	30 297	-	-
Taxes on products, net. and VAT	112 506	1 570	10 964	16 492	541	- 436	-4 291	137 345	180 677
Use at market prices	610 469	323 349	106 941	123 315	27 830	10 856	563 434	1 766 193	2 831 657

Table 411

Balance of payments

	2002*	2003*	2004*
	DKK mio.		
Current receipts, total	748 006	736 875	781 512
Export of goods (fob)	436 258	424 513	448 887
Services	209 122	208 128	225 561
Sea transport	86 682	92 136	110 085
Other transportation	29 292	27 769	27 065
Travel	37 563	34 686	34 026
Communication, Information services etc.	15 648	14 073	14 204
Other business services	30 197	32 259	32 636
Financial and cultural services etc.	9 740	7 204	7 545
Compensation of employees	6 434	6 182	6 357
Investment income	67 097	67 415	70 158
Current transfers from EU	10 024	10 168	10 942
Other current transfers	19 071	20 468	19 607
Current expenditure, total	720 427	691 022	745 694
Import of goods (fob)	376 122	360 657	393 419
Services	192 322	185 888	207 170
Sea transport	76 652	79 030	92 523
Other transportation	13 499	13 476	14 438
Travel	45 920	43 861	43 681
Communication, Information services etc.	14 931	12 877	14 256
Other business services	28 956	24 934	29 683
Financial and cultural services etc.	12 364	11 710	12 590
Compensation of employees	6 768	6 772	7 336
Investment income	94 013	83 955	82 229
Current transfers to EU	15 640	15 426	16 547
Other current transfers	35 562	38 325	38 992
Surplus on current accounts	27 579	45 853	35 819
+ Capital transfers, etc. from abroad, net	745	-54	83
Net lending	28 324	45 799	35 902
+ Financial transactions, net from abroad	17 109	-15 020	-42 299
Change in Danmarks Nationalbank's reserve assets	45 433	30 779	-6 397


 For further information visit www.statbank.dk/bet6

Table 412

Balance of payments and foreign debt

	Goods and services, net ¹ DKK mio.	Investment income, net ¹ DKK mio.	Balance of payments current account, net ¹		Net foreign liabilities at end of year ²		
			DKK mio.	As percentage of gross domestic product	DKK mio.	As percentage of gross domestic product	Per capita in DKK
1960	- 458	33	- 407	- 1.0	417	1.0	90
1965	- 1 129	- 89	- 1 218	- 1.7	4 501	6.4	942
1970	- 3 452	- 334	- 4 077	- 3.4	14 929	12.6	3 016
1975	- 1 800	- 1 866	- 3 176	- 1.5	26 818	12.4	5 294
1980	- 4 090	- 9 580	- 13 400	- 3.6	99 700	26.7	19 457
1985	- 533	- 27 045	- 28 833	- 4.7	243 500	39.6	47 593
1990	41 863	- 33 891	3 425	0.4	282 000	34.2	54 795
1995	41 306	- 25 815	7 153	0.7	268 000	26.3	50 657
2000	76 197	- 32 872	18 627	1.5	218 000	17.0	40 754
2004*	73 859	- 12 071	35 819	2.5	166 000	11.5	30 676

¹ Figures for 1988 and onwards changed in accordance with the IMF fifth Balance of Payments Manual and exclusive of the Faroe Islands and Greenland. ² From 1991 and onwards figures are based on Danmarks Nationalbank's revised external debt figures.

Source (for liabilities): Danmarks Nationalbank.


 For further information visit www.statbank.dk/bet6

Table 413

Foreign debt

Per 31 december	2002	2003*	2004*
DKK bn.			
INSTRUMENTS			
Assets, total	2 182	2 342	2 527
Direct investment	615	611	544
Abroad	585	579	512
In Denmark	30	32	32
Portfolio investment	613	756	880
Equity securities	254	310	358
Debt securities	359	446	522
Other investment	758	747	884
Loans, deposits, etc	508	575	652
Other	250	172	232
Exchange reserves	197	228	219
Liabilities, total	2 408	2 520	2 693
Direct investment	587	597	537
Abroad	34	42	42
In Denmark	553	555	495
Portfolio investment	904	956	1 081
Equity securities	146	186	224
Debt securities	758	770	857
Other investment	913	964	1 073
Loans, deposits, etc	699	829	882
Other	214	135	191
Exchange reserves	4	3	2
SECTORS			
Assets, total	2 182	2 342	2 527
Private, companies and households	1 156	1 238	1 271
General government sector	138	150	162
Monetary Financial Institutions (MFI)	691	726	875
Danmarks Nationalbank	197	228	219
Liabilities, total	2 408	2 520	2 693
Private, companies and households	937	1 006	1 000
General government sector	288	249	262
Monetary Financial Institutions (MFI)	1 179	1 262	1 429
Danmarks Nationalbank	4	3	2
Net liabilities, total (liabilities-assets)	227	178	166
Private, companies and households	-218	-232	-271
General government sector	150	98	101
Monetary Financial Institutions (MFI)	488	536	554
Danmarks Nationalbank	-193	-224	-217

Source: Danmarks Nationalbank.

For further information visit www.statbank.dk/bet01 and [bet04](http://www.statbank.dk/bet04)

Table 414

Fixed capital

	Current prices				1995-prices			
	2000	2001*	2002*	2003*	2000	2001*	2002*	2003*
	DKK mio.							
Total gross capital stock, opening stock	6 511 497	6 793 700	7 067 597	7 406 795	5 964 944	6 100 895	6 240 758	6 398 713
Other machinery and equipment	874 824	894 160	942 842	995 796	887 153	920 028	956 349	989 351
Transport equipment	306 116	327 644	334 516	348 181	275 026	286 566	299 645	315 360
Buildings and structures	5 220 035	5 446 294	5 650 508	5 916 301	4 676 424	4 751 085	4 822 731	4 919 603
Dwellings	2 609 900	2 717 736	2 804 513	2 940 382	2 409 444	2 441 193	2 468 472	2 522 692
Non-residential buildings	1 782 723	1 858 716	1 945 522	2 035 474	1 586 755	1 618 666	1 651 170	1 680 710
Other structures	827 411	869 842	900 473	940 445	680 224	691 226	703 089	716 201
Livestock	7 275	8 221	8 464	8 802	8 368	8 484	8 425	8 652
Computer software	78 746	90 843	102 430	107 474	96 298	112 589	130 623	142 125
Entertainment, literary or artistic originals	8 413	8 803	9 271	9 535	7 751	7 937	8 158	8 305
Mineral exploration	16 089	17 736	19 566	20 706	13 924	14 205	14 827	15 317
Total consumption of fixed capital	199 607	211 287	218 536	...	197 761	209 138	219 006	...
Other machinery and equipment	61 167	65 775	68 824	...	71 134	77 413	82 606	...
Transport equipment	21 097	21 213	21 366	...	18 684	18 613	18 693	...
Buildings and structures	98 813	103 524	106 084	...	85 977	87 706	89 527	...
Dwellings	42 012	44 061	45 554	...	37 378	37 984	38 759	...
Non-residential buildings	35 917	37 474	37 474	...	31 582	32 287	32 883	...
Other structures	20 884	21 989	23 056	...	17 016	17 435	17 884	...
Livestock	•	•	•	•	•	•	•	•
Computer software	16 606	18 703	20 095	...	20 248	23 645	26 374	...
Entertainment, literary or artistic originals	1 353	1 429	1 484	...	1 239	1 269	1 294	...
Mineral exploration	571	642	684	...	478	492	512	...
Total net capital stock, opening stock	3 571 425	3 708 198	3 838 735	3 989 790	3 281 881	3 343 041	3 401 705	3 451 216
Other machinery and equipment	465 009	474 495	502 366	531 579	474 531	492 782	514 594	533 402
Transport equipment	177 239	201 986	210 440	222 359	166 684	177 520	188 610	198 417
Buildings and structures	2 858 802	2 952 863	3 039 225	3 147 598	2 559 761	2 582 603	2 597 873	2 614 638
Dwellings	1 418 196	1 467 462	1 504 092	1 552 179	1 305 486	1 317 995	1 323 723	1 331 568
Non-residential buildings	973 648	999 922	1 036 697	1 079 964	863 165	871 841	879 248	884 717
Other structures	466 958	485 480	498 436	515 455	391 110	392 767	394 902	398 353
Livestock	7 275	8 221	8 464	8 802	8 368	8 484	8 425	8 652
Computer software	49 391	55 941	62 180	62 613	60 411	69 394	79 403	82 956
Entertainment, literary or artistic originals	4 728	4 895	5 158	5 291	4 356	4 413	4 538	4 608
Mineral exploration	8 980	9 796	10 902	11 549	7 771	7 845	8 262	8 543

For further information visit www.statbank.dk/nat08