

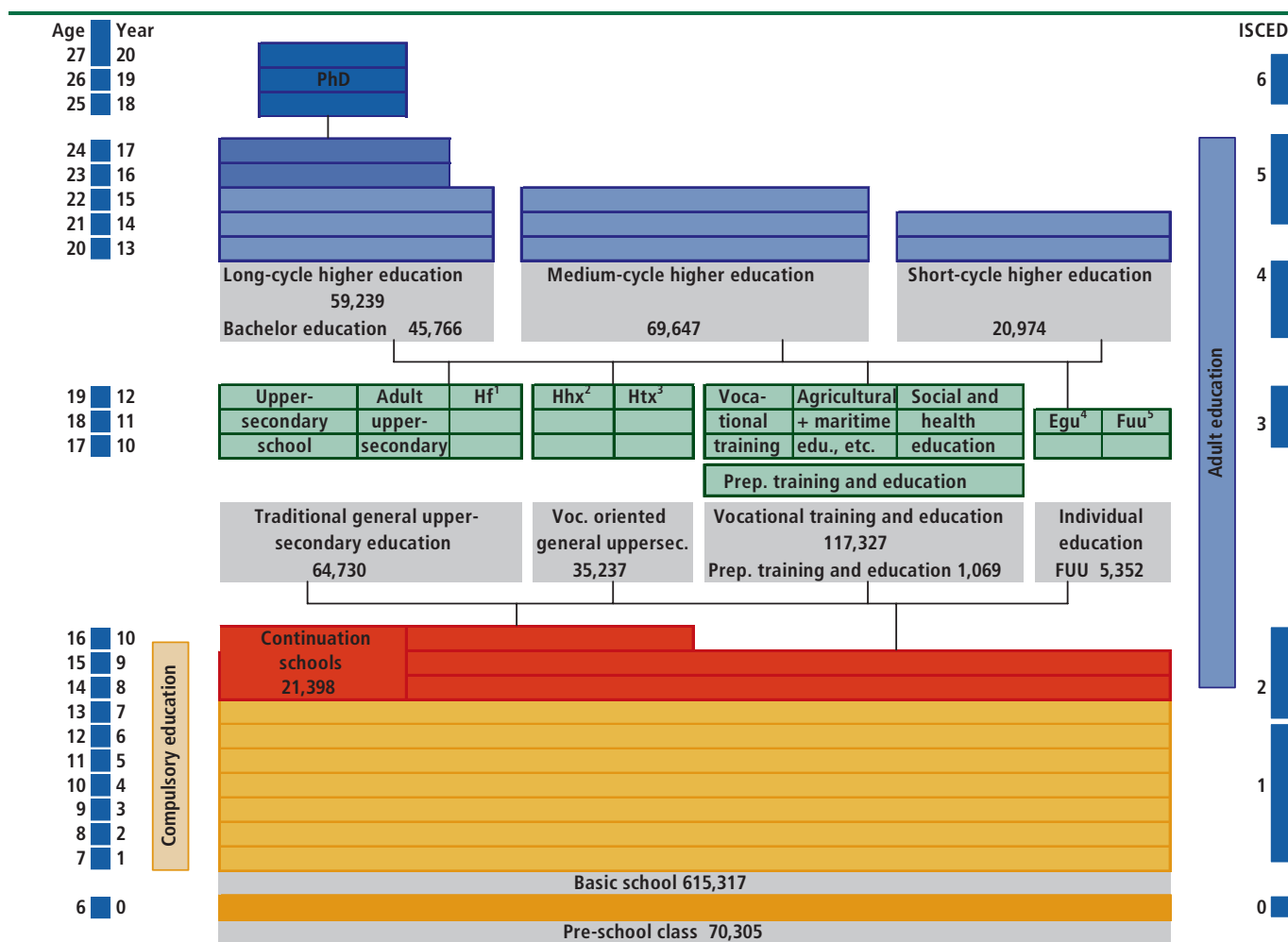
Education and culture

1. Education

Pre-school to grade 10

The first stage of the Danish educational system is the basic school, (education at first level). This begins in the optional pre-school year (education preceding the first level) and continues up to and including the optional 10th year in the Folkeskole (municipal primary and lower-secondary school). In 2002, 699,700 pupils attended education at first level and second level, first stage. Of this group, 68,450 began their education at pre-school, while 151,200 attended grades 8 to 10. Of the latter group, 21,400 students attended continuation school. Due to the changes in the age distribution in the population, the number of pupils attending pre-school has increased by 29 per cent since 1992, whereas the number of students attending grades 8 to 10 (education at second level, first stage) has fallen by 15 per cent from 1992-1999. The number of students has since then increased by 37 per cent. Figure 1 provides an overview of the structure and admission systems in the Danish educational system, from pre-school through secondary education to higher education.

Figure 1 Number of students in the educational system on 1st of October 2002



1) International Standard classification of Education

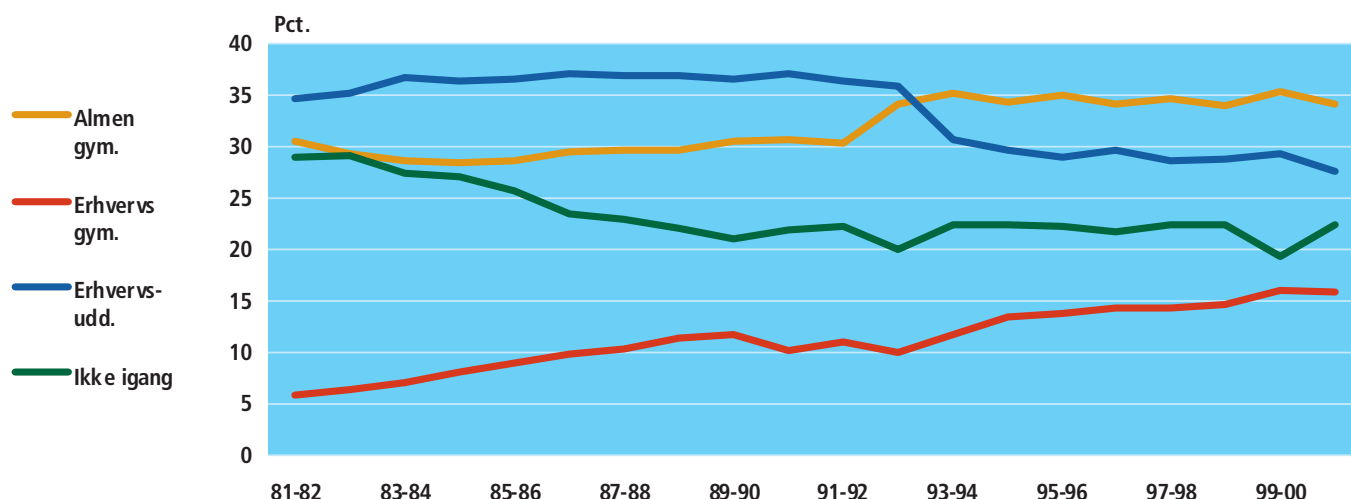
Education and culture

General/vocational upper-secondary education is popular – especially among girls

Of all students leaving school in 2000-01, 78 pct. had commenced further education after a period of 3 months. Half the students had chosen to attend general upper-secondary education or vocational education (general programmes of education at second level, second stage, hhx, htx), while 28 pct. opted for a vocational education and training, e.g. carpenters, bricklayers or hairdressers. The proportion of students who continue their education 3 months after leaving basic school has risen by 6 percentage points since the beginning of the 1980s. Especially, the number of students attending vocational education at second level has increased, while the proportion attending vocational education and training has fallen. The Gymnasium (upper-secondary school) and higher preparatory examination (general programmes of education at second level, second stage) are more frequently chosen by girls, and vocation education and training is more frequently chosen by boys immediately after leaving basic school.

Figure 2

Students 3 months after leaving basic school



Young people take a sabbatical after graduating from the upper-secondary school

Almost one third (30 pct.) of students who graduated in 1986-87 continued their education immediately after completing their second-level education. The same applied to one out of five students who graduated in 2000-01. The proportion of students commencing education immediately after graduation from secondary [N1]education was 23 per cent amongst graduates from general/vocational upper-secondary education; many of these students opted for vocational education.

Three out of four resumed their studies 3 years after graduation

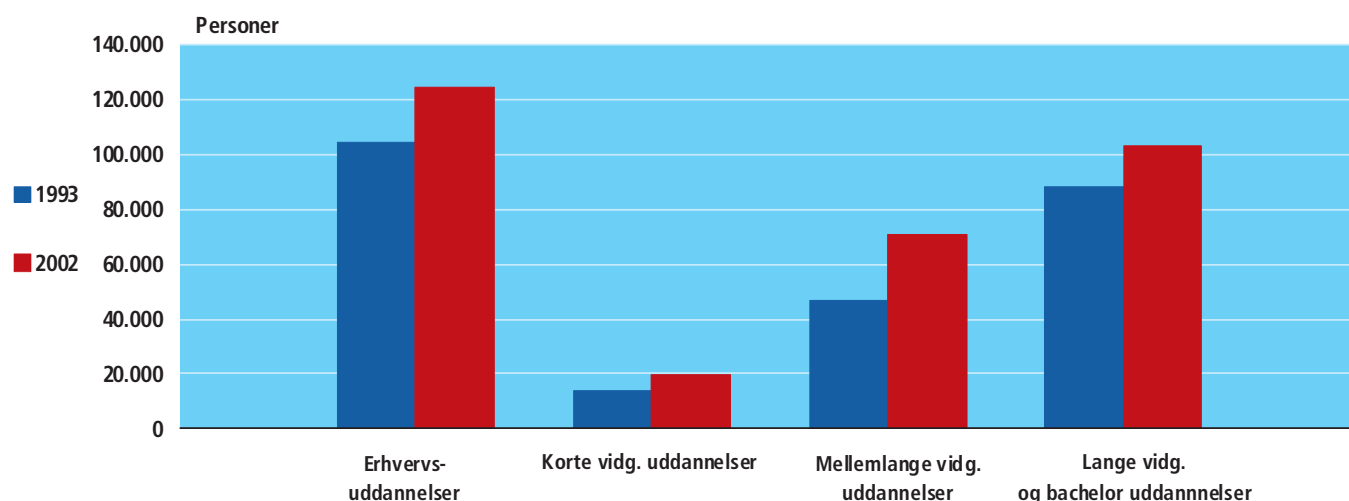
Many did not resume their studies until 3-4 years after graduation. 67 pct. of the graduates in 1986-87 resumed their studies 3 years after completing their secondary education, whereas 73 pct. of graduates in 1997-98 resumed their studies 3 years after completing their education. Graduates from the upper-secondary school mainly chose long-cycle higher education, whereas graduates from the higher preparatory examination chose medium, cycle higher education.

More students commence education and training

In 2002, the number of students attending vocational education and training was 124,000, while the total number attending higher education, e.g. police officers,

nurses or doctors, excluding 4,300 research students, reached 193,700. Since 1993, the number of students attending vocational education and training has increased by 19 pct., and by 30 pct. for long-cycle higher education. Medium-cycle higher education accounted for the largest increase by 50 pct.

Figure 3 Students attending education and training providing them with professional qualifications



Social science accounts for the highest number of students

Of the 193,700 students attending long-cycle higher education, social science, educational teaching and the humanities account for the highest number of students, with 24, 21 and 19 pct., respectively. Within social science, a large number of students attend education as marketing economists, MSc's (economics and business administration), or study law and economics, whereas educationalists and school teacher prevail within educational teaching. The humanities mainly comprise languages, history, philosophy and theology.

11 pct. of all students attend technical education, e.g. engineers or architects and 6 pct. attend natural science education, comprising mainly physics, mathematics, chemistry and biology. 13 pct. of all students attend health education, e.g. nurses, doctors and pharmacists

365,000 course participants attend at private suppliers

Outside the main educational system there are a number of courses (of short or long duration) within adult education as well as a few training courses which provide formal qualifications. These courses provide opportunities for those who have left the main educational system. Adult education courses covering almost all the levels within the ordinary educational system are available. In 2002 365,000 attended courses in adult education at private course-suppliers.

One-third of all adult education courses has upgraded the qualifications of the participants in 2002

In the school year 2001-02, 680,000 course participants or 380,000 persons completed their participation in public-managed adult or supplementary courses. 51 pct. of the participants in public courses were women, and there is a relatively

even age distribution, whereas the age distribution of men is dominated by young men. One-third of all public courses has upgraded the qualifications of the participants in relation to their highest level of education and training completed.

Six out of ten citizens has gone through supplementary training

Almost two millions Danes have attended supplementary training through public courses. 41 per cent of the students attending general adult education had completed an education course maintaining their professional qualifications, while 18 per cent has taken at least one course aimed at upgrading their qualifications.

10 years after basic school 48 pct. have professional qualifications

Ten years after leaving basic school in 1990-91, 48 per cent of all individuals had completed training, which provided them with professional qualifications. Of this group, 32 per cent had completed a vocational education course, 16 per cent had completed higher education, and 24 per cent were still studying. "The educational remainder" - young people who did not attend any educational institution or had completed an education course providing them with professional qualifications ten years after leaving basic school - accounted for 21 per cent of the year 1990-91. This proportion has fallen by 5 pct. points when compared to the year 1981-82.

2. Educational levels and employment

Increase in the level of education since 1993

In 2003, 63 pct. of the 30-69 year-olds had completed education providing them with professional qualifications. "Education courses providing professional qualifications" are defined as vocational or higher education aimed at specific types of jobs. This proportion has increased by 8 percentage points from 1993 to 2003. More men than women have completed education courses providing them with professional qualifications. Another characteristic feature is the fact that the young generation is more highly educated than their parents.

High frequency of vocational education

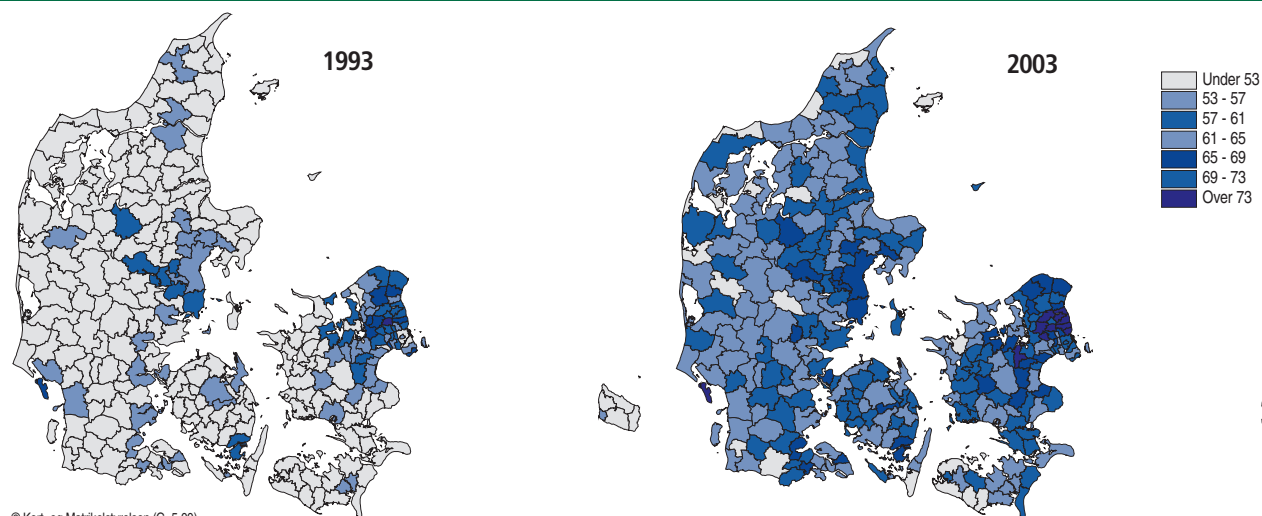
The highest level of qualifications among the 30-69-age group was most frequently a vocational education. 39 pct. had completed this type of education, while 24 pct. had completed higher education in 2003. Since 1993, the proportions have increased by 3 and 5 percentage points, respectively. Among the remaining 37 pct. of the population, 30 pct. had completed basic school education, 4 pct. general upper secondary education as the highest level of education, while there is no information for the last 2 pct.

Great regional differences

Great regional differences were evident with regard to educational patterns within the Danish population in 2003. The proportion of individuals who have completed education courses providing them with professional qualifications varied within each county. There was, however, a trend for the highest proportion completing education courses providing them with professional qualifications to be found around the large cities, with correspondingly lower proportions being evident in the provinces.

Figure 4

Education providing professional qualifications among 30-69 year olds



Differences in the educational levels are sharply evened out in a geographic perspective

The highest proportion of individuals who have completed education courses providing them with professional qualifications was in Værløse Municipality (79 per cent), while the lowest figure was in Thyborøn-Harboøre (47 per cent). Over the recent decade differences have been sharply evened out, as many outlying districts have experienced a higher increase than the major urban areas. Large differences still exist within each county.

Immigrants are in the educational system for a shorter period of time

However, the educational patterns of young immigrants were different from those of the population as a whole. Fewer immigrants attend an upper-secondary examination, higher preparatory examination, or higher commercial examination and higher technical examination, while more attended basic school. These differences were, however, less significant when compared to 1995 levels; this has implied that more immigrants attend an upper-secondary examination, higher preparatory examination, higher preparatory examination and vocational education.

Falling proportion of descendants attend university

From 1995 to 2002, the proportion of descendants, from non-western countries, aged 20-29 years attending long-cycle higher education declined in relation to the population group as a whole. The proportion of descendants from non-western countries attending medium-cycle and short-cycle higher education is much higher. The number of students have increased by 436 pct. and 650 pct. respectively, while the number of descendants, from non-western countries, aged 20-29 years have only increased by 357 pct.

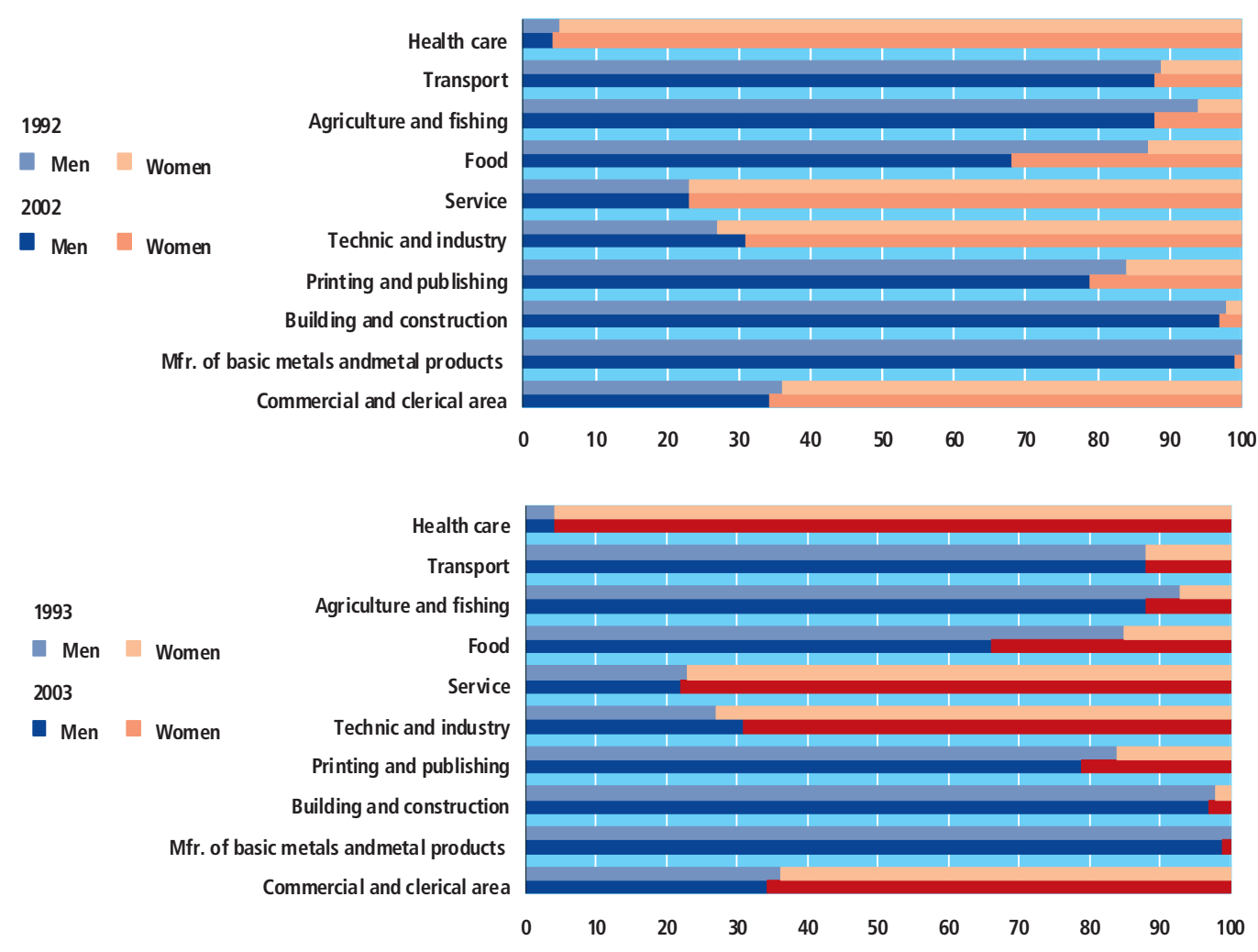
Education and culture

3. Sex and education

Sharp divisions in educational patterns, especially among men and among women with vocational education

Sharp distinctions were observed in the educational patterns for men and women with regard to both educational levels and fields. More men than women had completed vocational education or long-cycle higher education in 2003, whereas more women than men had completed short or medium-cycle higher education in the same year. This difference has become less pronounced during the last ten years. Figure 4 shows the sharp divisions between the choices made by men and women as regards field of vocational education in 1992 and 2002.

Figure 5 30-69 year-old men and women with vocational education as the highest education completed, by field (per cent)



Most medium-cycle courses are either dominated by men or women

As far as *medium-cycle education* is concerned, four out of ten disciplines were sharply dominated by men: These were technical (e.g. building technicians and engineers), agriculture (e.g. forestry and landscape engineers), transport (e.g. marine engineers and shipmasters) and public security education. However, four

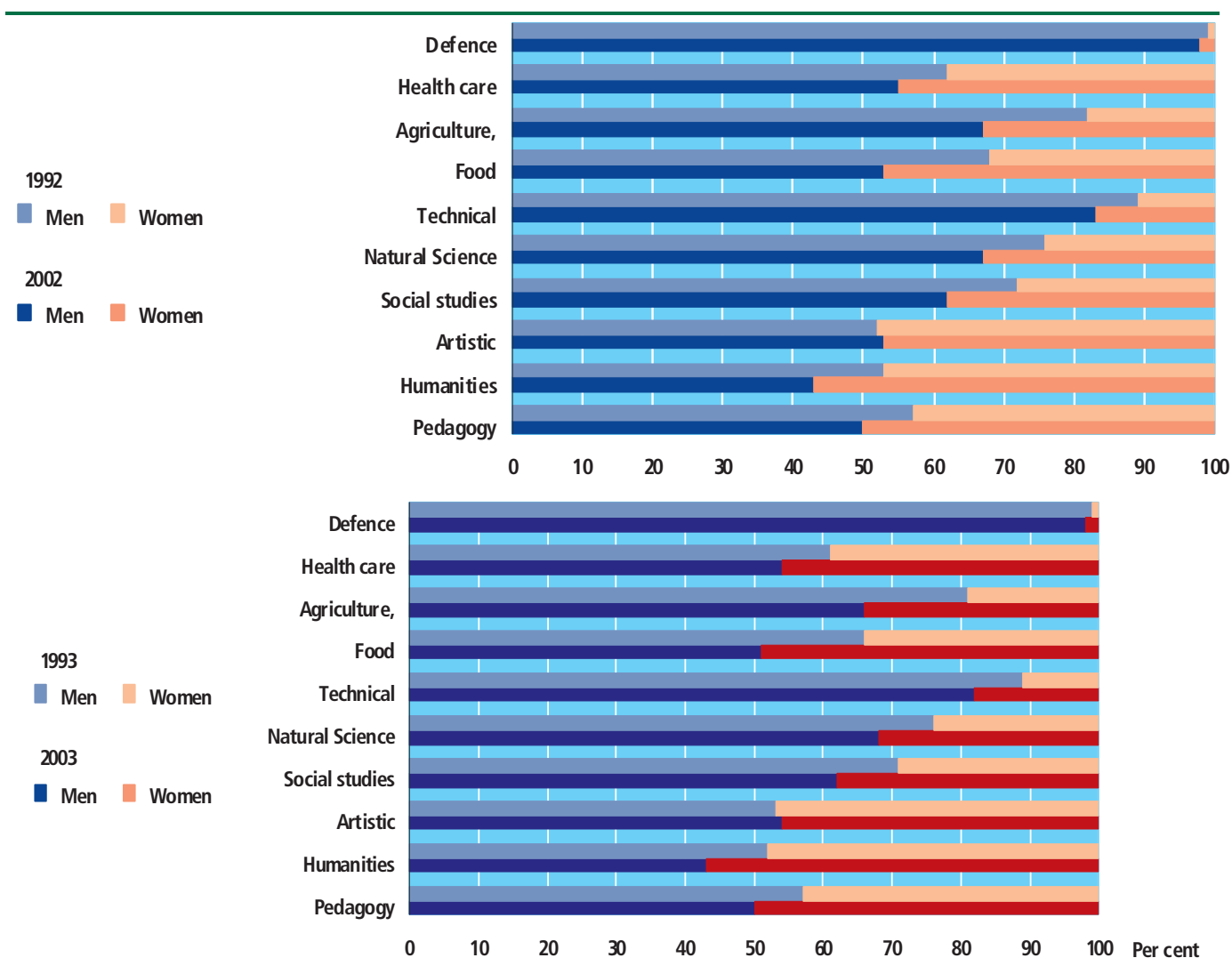
disciplines pedagogy, business language, the food sector, and the health sector are dominated by women. Among the major courses are here, e.g. school teachers, educationalists and trained nurses.

Long-cycle higher education is more mixed

As far as *long-cycle higher education* is concerned, five out of ten disciplines were dominated by men, whereas the rest were mixed. These were pedagogy, the humanities (e.g. MAs in Danish language), music (academic opera training), the food sector (MSc in dairy science), and medical studies (e.g. doctors).

Education and culture

Figure 6 30-69 year-old men and women with long-cycle higher education, by field



Women increase their foothold within certain fields

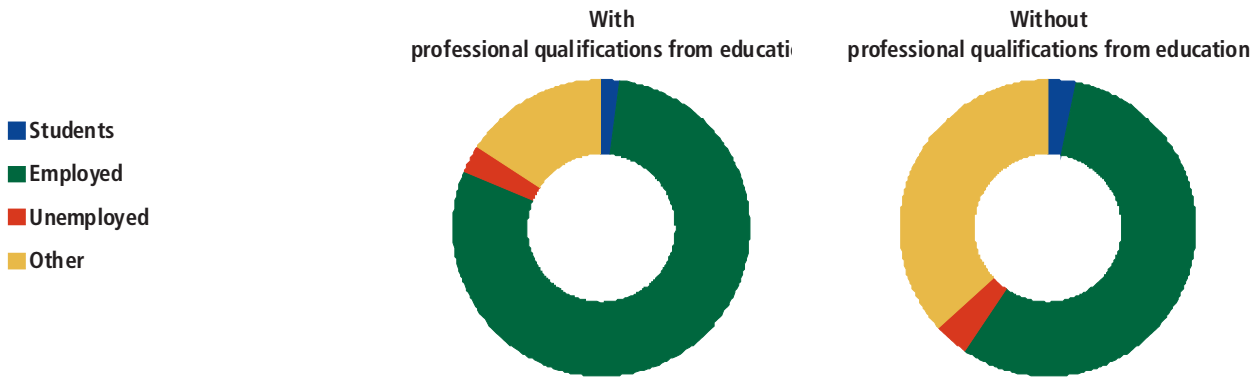
Even though the educational system continued to be highly divided in terms of gender in 2003, some progress has been made during the period from 1993 to 2003 as regards the education choices made by women and men. The dividing lines remain most rigid for vocational education and training and short and medium-cycle vocational higher education, where the proportion of women has only gone up by 2 per cent. The greatest degree of relaxation of the gender barriers was evident within long-cycle higher education, where the proportion of women increased by 7 per cent.

4. Education and employment

Education has a significant effect on the employment

Persons with professional qualifications have a higher employment rate than those with out professional qualifications. However, the significance of qualifications has decreased from 1992 to 2002.

Figure 7 The relation of the labour market to the 30-69 year old. 1st. of January 2002.



Education and culture

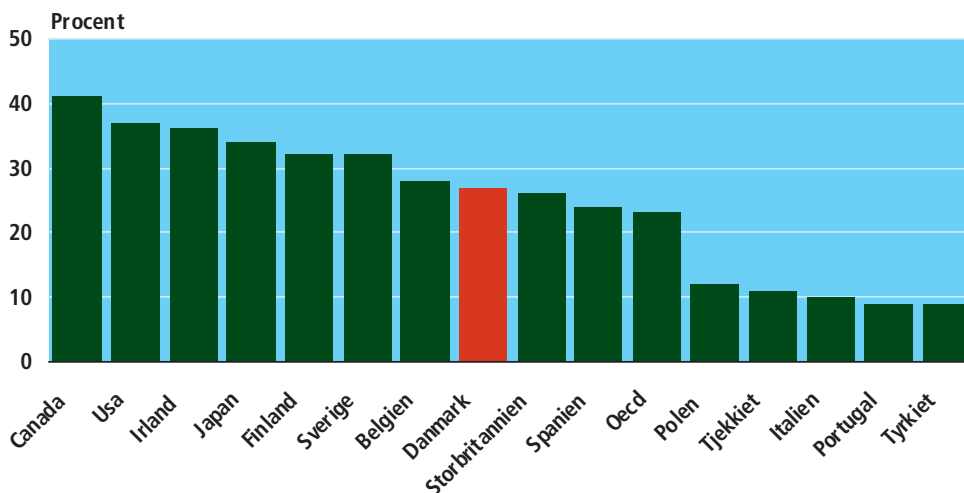
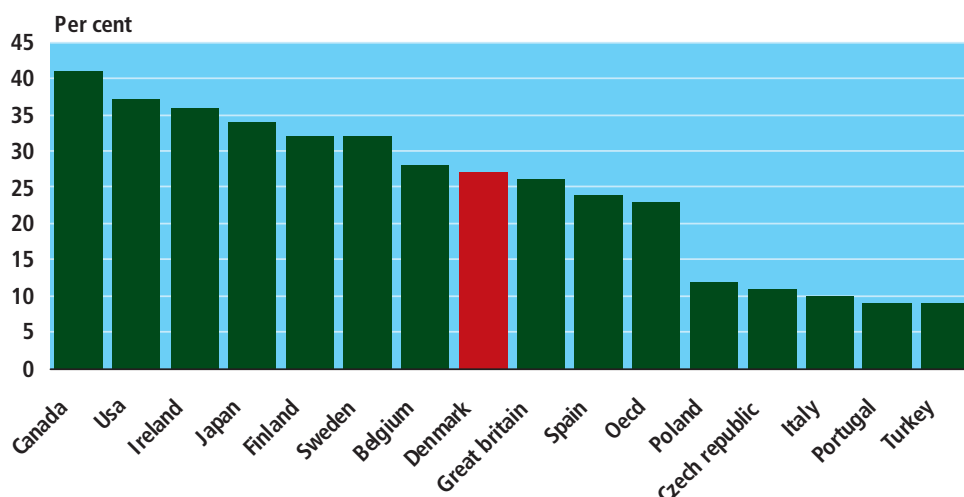
5. Education in an international perspective

Level of education in Denmark is above OECD average

In all the OECD countries, an average of 23 pct. of the 25-64 age group had completed a higher education in 2001. At 27 pct., Denmark was among those OECD countries with a high percentage. The three highest percentages were found in Canada, USA, and Ireland, while Turkey, Portugal and Italy accounted for the three lowest percentages.

Figure 8

Persons having completed further education in selected OECD countries 2001



Source: OECD, *Education at a glance 2003*.

Danes proceed through many years of education

Children beginning pre-school in Denmark in 2001 will proceed through an average of approximately 16.1 years of education before completing a full-time education course providing them with professional qualifications. Australia accounts for the highest number of years of education with 19.9 years, closely followed by Great Britain with 18.9 years. Turkey and Mexico account for the highest number of education with respectively 11.3 and 12.0 years. The average among OECD-countries was 15.8 years in 2001.

6. Culture

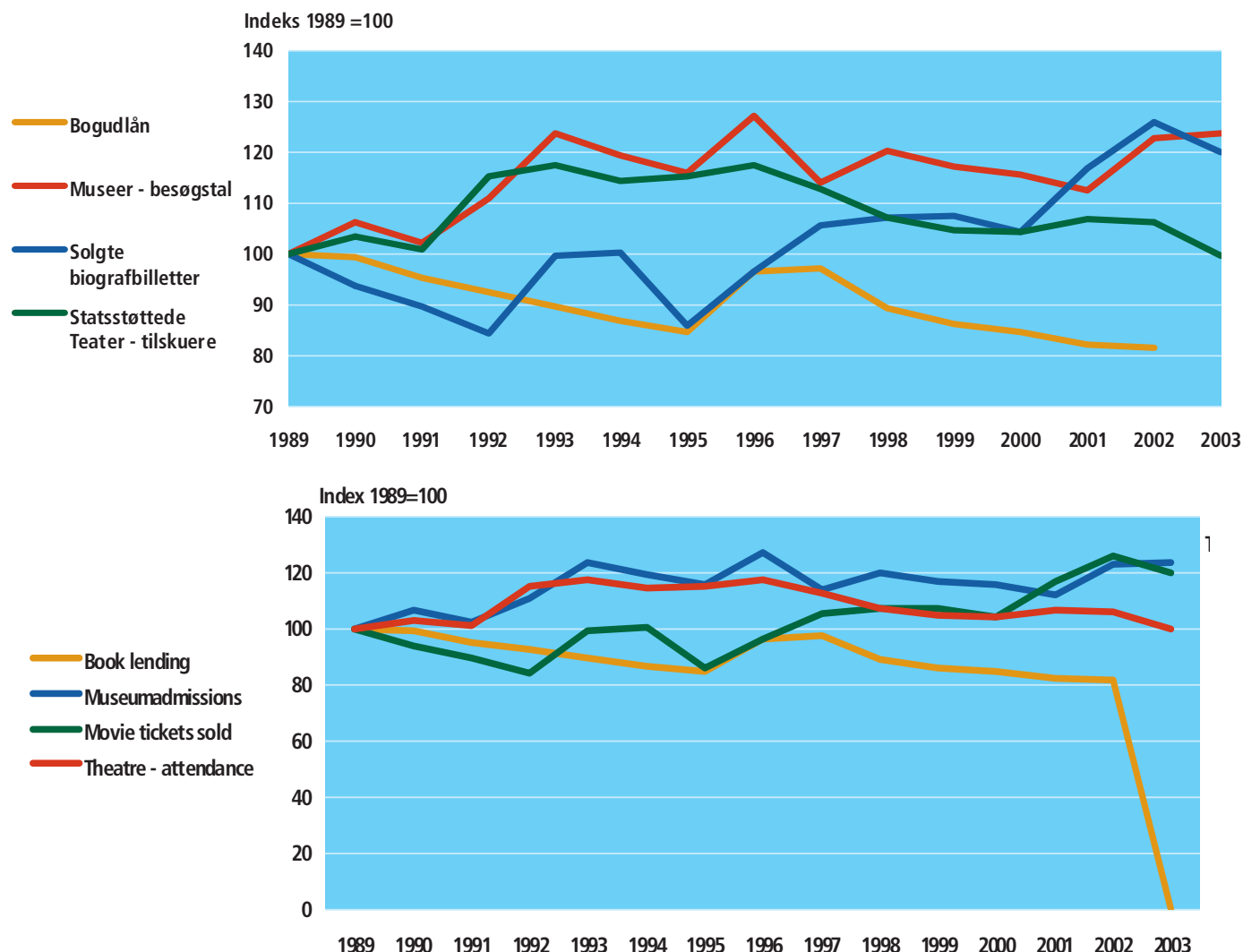
Decline in admissions to state-subsidized theatres

The attendance rate of state-subsidized theatres showed a decline of 6 pct. over the season 2002/2003 in relation to the previous season. Plays for adults accounted for 43 pct. of the 2.2 mio. tickets sold, while children's theatres accounted for 23 pct. The other types of production accounted for the remaining part of total admissions, respectively light operas/musicals (13 pct.), operas/ballad operas (9 pct.), ballets/dance (9 pct.) and revue/cabaret (1 pct.). The statistics only cover state-subsidized theatres and do not provide a complete picture of Danes' interest in theatres. In 2002/2003, 108 productions were state-subsidies, including subsidies by the Danish Theatre Council, compared to 117 the year before.

Education and culture

Figure 9

Various cultural institutions - activities



Fewer people go to the cinema

In 2003, the number of tickets sold for films screened at Danish cinemas reached 12 million, which was 5 pct. fewer tickets, compared to 2002. The fall in the number of tickets sold was accounted for by Danish as well as foreign films. The 3 most successful films in 2003 were: "Ringenes Herre: Kongen vender tilbage", "Ringenes Herre - De to tårne" and "Die Another Day". These 3 films accounted for 1.7 million tickets or 14 pct. of all tickets sold. Although, the period of screening of "Ringenes Herre: Kongen vender tilbage" was only about 3 weeks, the film accounted for the highest number of tickets sold.

Danish films accounted for 26 pct. of all tickets sold in 2003. This is an increase of 1 percentage point, compared to the previous year. The most popular Danish film was "Arven", which accounted for 374,000 tickets or the fifth-highest number of tickets sold in 2003.

Fall in admissions to museums

In 2003, admission rates of Danish museums reached 9.5 million visitors, which was a fall of 2 pct. in relation to 2002. The National Museum of Denmark saw an

increase of 14 pct., of which the branch Prince's Palace in Copenhagen alone accounted for an increase of 16 pct. The National Museum of Denmark, which is considered to be an independent museum type, was the only museum that accounted for an increase. The remaining museum types (local history museums, special-subject history museums, art museums and natural science museums) each saw a fall in the number of admissions in 2003, compared to the previous year. In 2003, the zoological gardens and the botanical gardens and aquaria had 3.6 million visitors, of which state-subsidized gardens, which was an increase of 2 pct., compared to 2002.

Education and culture

Figure 10 The ten highest admission rates

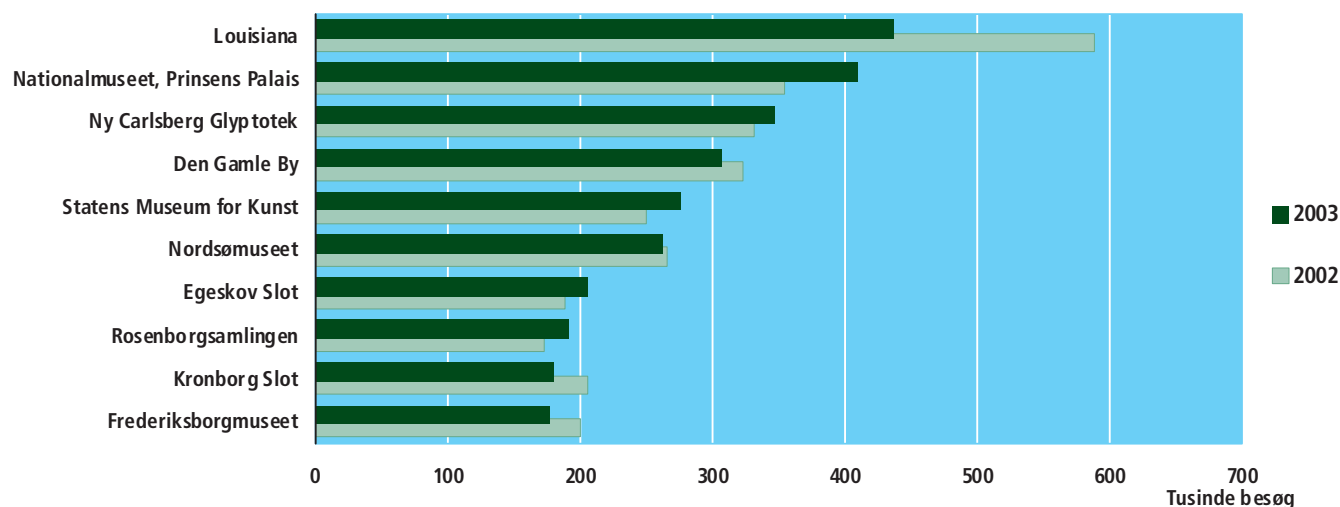
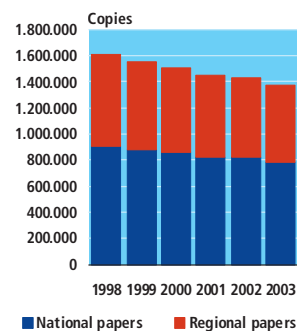
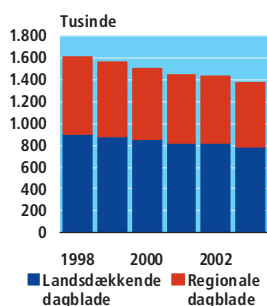


Figure 11
Average daily circulation, total



Louisiana still accounts for the highest admission rates

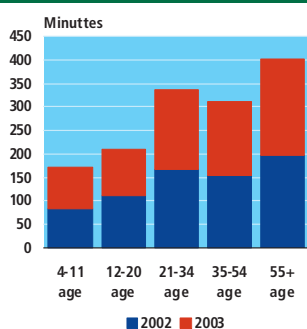
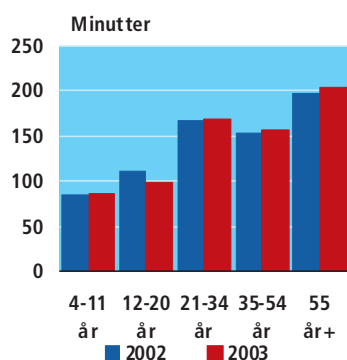
In 2003, the art museum Louisiana still accounted for the highest admission rates of 437,500 visitors, even though there was a fall of 26 pct. in the number of visitors, compared to 2002. Statens Museum for Kunst, Copenhagen saw an increase of 10 pct. although the new exhibition building was closed for 4½ months.

Fall in the number of people buying newspapers by 200,000 over the past 6 years

In 2003, the daily newspapers saw a fall in the average daily circulation of 1.4 mio. newspapers on weekdays and 1.3 mio. newspapers on Sundays, corresponding to a fall of 4 pct. and 6 pct., respectively compared to 2002. However, this fall does not include newspapers distributed free of charge, whose daily circulation was about 0.5 mio. newspapers in 2003. The average circulation of daily newspapers has fallen by about 200,000 newspapers since 1998. Book lending from public and school libraries has fallen slightly in 2002, compared to the previous year.

Education and culture

Figure 12
Average viewing rates



Older people watch more television

97 out of 100 households in Denmark have a television and most of them have access to DR1 or TV2. The average viewing rates of Danes were 2 hours and 38 minutes per day in 2003. There is a general increase in daily television consumption with age, and persons over 55 years have by far the highest television consumption reaching an average of 3 hours and 24 minutes per day. Children aged 4-11 watch on average television 1 hour and 27 minutes per day, and this age group thus accounts for the lowest television consumption. In 2003, there was an increase in television consumption for all age groups, except the age group 11-20 years, compared to 2002.

In 2003, the highest time spent on watching TV was, in the order given, accounted for by the channels TV2, DR1, TV3 and TVDanmark2. The number of people watching a TV channel naturally is widely dependent on the number of people who have access to the channel. For example, 99.7 pct. of all households in Denmark having a television set have access to DR1 and TV2, while only 75 pct and 69 pct., respectively have access to TVDanmark2 and TV3.

Table 86

Educational institutions 2002

	Number of institutions	Students		Total
		Men	Women	
Total	3 520	549 759	568 261	1 118 020
General schools	3 198	383 886	384 362	768 248
Basic schools, public	2 327	306 630	290 600	597 230
Basic schools, private	464	41 220	40 126	81 346
Continuation schools	236	10 865	11 555	22 420
Upper-secondary schools	153	24 253	40 695	64 948
Home economics, arts and crafts schools ¹	18	23	158	181
Open Youth Education	.	895	1 228	2 123
Vocational schools	164	94 852	77 113	171 965
Handicraft schools	4	321	764	1 085
Business colleges and technical schools	10	9 844	5 840	15 684
Business colleges	46	25 463	34 898	60 361
Technical schools	36	53 978	20 043	74 021
Schools of administration	1	33	78	111
Transport school	5	1 174	178	1 352
School of the graphic industries	1	72	80	152
Agricultural schools	12	480	127	607
Forestry school	1	293	42	335
Danish Meat Trade School	1	729	632	1 361
Maritime and shipmaster schools	6	255	33	288
Social and health schools	30	781	12 221	13 002
Schools of medical laboratory technicians	2	79	609	688
School of assistant dispensers	1	16	438	454
Schools of chiropodists and dental surgery assistants	3	5	706	711
Police college, the prison system schools	2	1 179	419	1 598
Defence staff colleges	3	150	5	155
Institutions of higher education	158	71 021	106 786	177 807
Universities and university centres	5	34 055	39 788	73 843
IT University of Copenhagen	1	632	355	987
Teacher training colleges	18	5 436	11 180	16 616
Institutes for social educators	35	4 168	19 079	23 247
Home economics schools	2	55	818	873
Arts and crafts schools	8	203	1 190	1 393
Educational University of Denmark	2	716	2 021	2 737
Centre for sign language	1	10	160	170
Academies of music	7	795	604	1 399
School of visual arts	1	93	93	186
Theatre schools	3	78	97	175
Danish School of Journalism	1	623	340	963
Schools of library and information science	2	300	658	958
Schools of restorers	1	23	77	100
Film schools	1	59	39	98
Business schools	7	8 843	8 511	17 354
Schools of social work	4	260	1 953	2 213
Technical colleges	6	4 418	1 349	5 767
Technical University of Denmark	1	4 780	1 455	6 235
Schools of architecture	2	1 010	1 316	2 326
Schools of marine engineering	8	980	26	1 006
Veterinary and Agricultural University	1	1 162	2 078	3 240
Navigation schools	2	190	25	215
Schools of nursing	21	459	8 902	9 361
High schools of nursing	2	11	400	411
Schools midwives	2	-	294	294
Schools of physiotherapists	9	726	3 068	3 794
Schools of radiography	1	20	51	71
College of Pharmacy	1	369	820	1 189
Military academy	3	547	39	586

For further information visit www.statbank.dk/u11

Table 87

Students in the educational system 2002

	Students	Entrance ¹	Graduates ²	Did not complete education
	1.10.2001 - 30.09.2002			
Total	1 118 020	242 578	175 148	84 926
Basic school/preparatory	704 886	71 950	66 870	14 202
General upper-secondary education	98 891	41 286	31 191	9 300
Vocational edu. and training	116 326 ³	65 024	35 080	37 725
Short-cycle higher edu.	19 674	9 104	6 798	3 471
Medium-cycle higher education	70 911	22 033	15 105	5 589
Bachelor	46 917	15 819	8 988	7 982
Long-cycle higher education	60 415	17 362	11 116	6 657
Men, total	549 759	113 819	80 086	42 136
Basic school/preparatory	359 985	36 091	33 257	6 001
General upper-secondary education	42 968	18 081	13 163	4 514
Vocational edu. and training	64 068	32 272	15 845	20 201
Short-cycle higher education	10 962	5 032	3 933	2 111
Medium-cycle higher education	20 911	6 805	4 298	1 976
Bachelor	21 607	7 341	3 978	3 960
Long-cycle higher education	29 258	8 197	5 612	3 373
Women, total	568 261	128 759	95 062	42 790
Basic school/preparatory	344 901	35 859	33 613	8 201
General upper-secondary education	55 923	23 205	18 028	4 786
Vocational edu. and training	52 258	32 752	19 235	17 524
Short-cycle higher edu.	8 712	4 072	2 865	1 360
Medium-cycle higher education	50 000	15 228	10 807	3 613
Bachelor	25 310	8 478	5 010	4 022
Long-cycle higher education	31 157	9 165	5 504	3 284

¹ Influx of students to basic schools equals pre-school class. ² Graduates from basic school equal graduates from basic school with 9th or 10th grade examination. ³ About 8.000 searching for practical training place are not included.

For further information visit www.statbank.dk/03

Table 88

Students 2002

	Basic school/ preparatory	General upper- secondary education	Vocational education and training	Short- cycle higher education	Medium- cycle higher education	Bachelor	Long-cycle higher education	Total	Total students as percentage of year group
	per cent								per cent
Total	63	9	10	2	6	4	5	1 118 020	26
06 - 14 years	100	-	-	-	-	-	-	601 762	98
15 - 19 years	43	38	18	-	-	-	-	234 492	82
20 - 24 years	2	7	31	7	21	22	11	133 195	43
25 - 29 years	1	1	15	7	28	13	35	82 879	23
30 - 34 years	-	1	-	7	29	9	31	28 083	7
35 - 39 years	-	1	32	6	34	7	21	16 434	4
40 - 66 years	-	1	35	4	28	8	23	21 175	1
Men	65	8	12	2	4	4	5	549 759	25
06 - 14 years	100	-	-	-	-	-	-	307 262	98
15 - 19 years	43	32	24	-	-	-	-	119 321	81
20 - 24 years	1	7	38	8	12	22	12	60 933	39
25 - 29 years	1	1	16	10	21	14	38	37 725	21
30 - 34 years	-	1	22	9	21	10	36	12 297	6
35 - 39 years	-	1	31	9	23	9	26	5 767	3
40 - 66 years	-	1	29	8	22	12	28	6 454	1
Women	61	10	9	2	9	4	5	568 261	27
06 - 14 years	100	-	-	-	-	-	-	294 500	99
15 - 19 years	42	44	12	-	-	-	-	115 171	82
20 - 24 years	2	6	25	6	28	22	10	72 262	47
25 - 29 years	-	1	15	6	33	13	32	45 154	25
30 - 34 years	-	1	24	5	35	8	27	15 786	8
35 - 39 years	-	1	32	4	40	6	18	10 667	5
40 - 66 years	-	1	37	2	31	7	21	14 721	2

For further information visit www.statbank.dk/03

Table 89

Students by region 2002

Place of residence on 1 January 2002	Basic school/ preparatory	General upper- secondary education	Vocational education and training	Short- cycle higher education	Medium- cycle higher education	Bachelor	Long-cycle higher education	Total
	per cent							
Total	63	9	10	2	6	4	5	1 118 020
Copenhagen Municipality	38	5	8	4	11	14	19	110 936
Frederiksberg Municipality	41	6	7	3	10	14	19	16 766
Copenhagen County	67	10	9	2	5	3	5	121 963
Frederiksborg County	73	10	8	1	4	2	2	72 143
Roskilde County	71	9	10	1	4	2	2	46 343
Vestsjælland County	70	9	12	1	5	1	1	58 467
Storstrøm County	69	10	12	1	6	1	1	48 058
Bornholm County	72	10	12	1	4	-	-	8 273
Fyn County	64	8	11	2	7	4	4	98 972
Sønderjylland County	71	10	12	1	5	1	1	50 518
Ribe County	69	9	12	1	6	1	1	47 665
Vejle County	69	9	12	2	6	1	1	70 148
Ringkøbing County	70	11	11	2	5	1	1	58 215
Århus County	58	8	10	2	7	7	8	148 104
Viborg County	71	10	12	1	5	0	1	47 731
Nordjylland County	64	9	11	1	7	3	5	105 031
Not stated ¹	7	5	13	8	11	15	41	8 687

¹ Students who live abroad, but go to school in Denmark.

For further information visit www.statbank.dk/03

Table 90

Students by national origin 2002

	Basic school ¹ / preparatory	General upper- secondary school	Vocational education and training	Short- cycle higher education	Medium- cycle higher education	Bachelor	Long-cycle higher education	Total
	per cent							
Men and women, total	28	17	20	3	12	8	11	570 305
Of whom immigrants and descendants	30	16	20	5	9	8	11	46 804
Western countries	14	11	15	7	15	15	24	11 196
Non western countries	35	17	22	5	8	6	7	35 608
Men, total	29	16	24	4	8	8	11	268 687
Of whom immigrants and descendants	32	15	22	6	7	7	12	22 287
Western countries	16	11	16	7	12	13	25	4 871
Non western countries	36	16	24	5	6	5	8	17 416
Women, total	26	19	17	3	17	8	10	301 618
Of whom immigrants and descendants	29	17	19	5	11	9	11	24 517
Western countries	12	11	14	6	17	16	24	6 325
Non western countries	34	19	21	5	9	6	6	18 192

¹ Excluding pre-school class to the 7th grade.

For further information visit www.statbank.dk/u13

Table 91

Students enrolled in general education

	Students on 1 Oct. 2001		Entrance of students ¹ 1 Oct. 2001–30 Sept. 2002		Graduates 1 Oct. 2001–30 Sept. 2002		Students on 1 Oct. 2002	
	Men	Women	Men	Women	Men	Women	Men	Women
Total	396 556	395 619	53 226	56 510	46 420	51 641	402 953	400 824
Basic school/preparatory	353 992	340 087	35 145	33 305	33 257	33 613	359 985	344 901
Upper-secondary school	20 154	32 904	7 897	12 459	6 114	9 913	20 548	33 631
Higher preparatory examination	3 527	7 045	1 995	3 623	1 226	2 713	3 396	6 547
Adult upper secondary school	304	457	212	354	101	164	316	534
Entrance course to higher education	16	53	23	126	15	45	23	128
Higher commercial examination	11 400	13 615	4 870	5 988	3 726	4 785	11 436	13 551
Higher technical examination	6 528	1 335	2 559	514	1 608	317	6 629	1 392
Entrance examination to engineers	635	123	525	141	373	91	620	140

¹ Influx to the basic school equals pre-school class.

For further information visit www.statbank.dk/03

Table 92

Students in upper-secondary education 2002

	Completed with examination		Without examination		Average mark		Total
	Men	Women	Men	Women	Men	Women	
Total	13 163	18 028	4 514	4 786	•	•	40 491
Upper-secondary school	6 114	9 913	1 389	1 819	8.3	8.3	19 235
Higher preparatory examination	1 226	2 713	900	1 408	7.9	7.7	6 247
Adult upper-secondary school	101	164	99	113	8.3	8.5	477
Entrance course to higher education	15	45	1	6	67
Higher commercial examination	3 726	4 785	1 108	1 267	8.0	8.0	10 886
Higher technical examination	1 608	317	850	140	8.0	8.3	2 915
Entrance examination to engineers	373	91	167	33	664


 For further information visit www.statbank.dk/03

Table 93

Students in vocational education and training

	Students on 1 Oct. 2001		Entrance of students 1 Oct. 2001–30 Sept. 2002		Graduates ¹ 1 Oct. 2001–30 Sept. 2002		Students on 1 Oct. 2002	
	Men	Women	Men	Women	Men	Women	Men	Women
Total	67 842	56 265	32 272	32 752	15 845	19 235	64 068	52 258
Educational	263	1 662	196	1 043	146	961	260	1 560
Commerce, clerical trades	11 556	23 971	5 239	10 424	3 030	6 228	10 826	21 944
Construction	22 061	2 063	8 917	1 291	4 585	365	21 186	1 941
Iron and metal	20 407	1 343	8 218	1 294	4 326	231	18 676	1 468
Graphic	1 712	1 075	866	304	310	172	1 620	896
Technical and other industry	825	1 803	651	561	207	432	848	1 363
Service	646	3 621	422	2 385	194	579	612	3 703
Food industry and home economics	5 328	5 888	2 790	3 314	1 046	1 261	4 973	5 385
Agriculture and fishing	2 266	1 694	2 678	1 370	1 299	510	1 954	1 573
Transport, etc.	2 206	280	1 694	224	363	62	2 519	308
Health care	564	12 864	601	10 542	339	8 434	586	12 116
Public security	8	1	-	-	-	-	8	1

¹ With vocational qualifications

For further information visit [1www.statbank.dk/u14](http://www.statbank.dk/u14)

Table 94

Students in vocational education and training 2002

	Graduates		Without examination		Total
	Men	Women	Men	Women	
Total	15 845	19 235	20 201	17 524	72 805
Educational	146	961	53	184	1 344
Commerce, clerical trades	3 030	6 228	2 939	6 223	18 420
Technical	4 585	365	5 207	1 048	11 205
Iron and metal	4 326	231	5 623	938	11 118
Construction	310	172	648	311	1 441
Graphic	207	432	421	569	1 629
Service	194	579	262	1 724	2 759
Food industry and home economics	1 046	1 261	2 099	2 556	6 962
Agriculture and fishing	1 299	510	1 691	981	4 481
Transport, etc.	363	62	1 018	134	1 577
Health care	339	8 434	240	2 856	11 869


 For further information visit www.statbank.dk/u34

Table 95

Students in higher education

	Students 1 Oct. 2001		Entrance of students 1 Oct. 2001–30 Sept. 2002		Graduates 1 Oct. 2001–30 Sept. 2002		Students 1 Oct. 2002	
	Men	Women	Men	Women	Men	Women	Men	Women
Total	84 604	114 701	27 375	36 943	17 821	24 186	82 738	115 179
Short-cycle higher education	12 974	8 865	5 032	4 072	3 933	2 865	10 962	8 712
Communication and applied language	1 868	1 432	757	539	628	509	1 668	1 145
The artistic	331	638	98	196	83	160	335	655
Social sciences	6 160	3 843	2 363	1 874	1 802	1 283	5 410	3 764
Technical	1 639	1 212	969	766	532	273	1 743	1 495
Food industry and home economics	203	309	90	147	95	167	149	243
Agriculture and fishing	411	245	310	104	335	109	355	212
Transport, etc.	139	17	71	7	130	15	73	7
Health care	43	704	27	310	8	196	50	772
Public security	1 180	465	347	129	320	153	1 179	419
Medium-cycle higher education	20 380	49 192	6 805	15 228	4 298	10 807	20 911	50 000
Educational	9 507	30 236	2 884	8 708	1 904	6 608	9 603	30 524
Communication and applied language	900	933	239	268	194	232	841	835
The artistic	148	355	75	124	45	135	176	330
Social sciences	322	2 061	101	760	102	538	287	2 169
Technical	7 085	1 744	2 515	679	1 467	368	7 377	1 830
Food industry and home economics	42	629	30	408	11	142	56	838
Agriculture and fishing	138	20	38	15	23	5	148	27
Transport, etc.	591	7	225	3	160	4	609	6
Health care	1 172	13 170	467	4 247	212	2 761	1 298	13 403
Public security	475	37	231	16	180	14	516	38
Bachelor	22 204	25 864	7 341	8 478	3 978	5 010	21 607	25 310
The humanities	6 994	12 569	2 244	3 862	1 080	2 260	6 801	11 984
Natural sciences	4 698	2 782	1 367	753	614	472	4 454	2 608
Social sciences	9 709	9 102	3 425	3 185	2 166	2 049	9 452	9 039
Food industry and home economics	46	122	15	77	6	37	51	154
Agriculture and fishing	422	493	95	160	83	110	391	485
Health care	335	796	195	441	29	82	458	1 040
Long-cycle higher education	30 046	30 780	8 197	9 165	5 612	5 504	29 258	31 157
Educational	265	651	180	509	9	30	377	950
The humanities, theology	5 043	9 180	1 549	2 744	790	1 686	4 931	8 730
The artistic	866	719	166	149	136	117	861	724
Natural sciences	3 552	2 198	1 166	887	798	520	3 353	2 287
Social sciences	9 617	8 208	2 887	2 791	2 060	1 763	9 288	8 484
Technical	6 469	2 933	1 626	827	1 042	382	6 587	3 179
Food industry and home economics	37	164	13	72	8	52	40	181
Agriculture and fishing	782	1 238	134	280	196	209	655	1 225
Health care	3 358	5 488	445	905	516	744	3 135	5 396
Public security	57	1	31	1	57	1	31	1

For further information visit www.statbank.dk03

Table 96

Students in higher education 2002

	Graduates		Without examination		Total
	Men	Women	Men	Women	
Total	17 821	24 186	11 420	12 279	65 706
Short-cycle higher education	3 933	2 865	2 111	1 360	10 269
Communication and applied language	628	509	329	317	1 783
The artistic	83	160	11	19	273
Social sciences	1 802	1 283	1 311	670	5 066
Technical	532	273	333	210	1 348
Food industry and home economics	95	167	49	46	357
Agriculture and fishing	335	109	31	28	503
Transport, etc.	130	15	7	2	154
Health care	8	196	12	46	262
Public security	320	153	28	22	523
Medium-cycle higher education	4 298	10 807	1 976	3 613	20 694
Educational	1 904	6 608	884	1 812	11 208
Communication and applied language	194	232	104	134	664
The artistic	45	135	2	14	196
Social sciences	102	538	34	114	788
Technical	1 467	368	756	225	2 816
Food industry and home economics	11	142	5	57	215
Agriculture and fishing	23	5	5	3	36
Transport, etc.	160	4	47	-	211
Health care	212	2 761	129	1 253	4 355
Public security	180	14	10	1	205
Bachelor	3 978	5 010	3 960	4 022	16 970
The humanities	1 080	2 260	1 357	2 187	6 884
Natural sciences	614	472	997	455	2 538
Social sciences	2 166	2 049	1 516	1 199	6 930
Food industry and home economics	6	37	4	8	55
Agriculture and fishing	83	110	43	58	294
Health care	29	82	43	115	269
Long-cycle higher education	5 612	5 504	3 373	3 284	17 773
Educational	9	30	59	180	278
The humanities and theology	790	1 686	871	1 508	4 855
The artistic	136	117	35	27	315
Natural sciences	798	520	567	278	2 163
Social sciences	2 060	1 763	1 156	752	5 731
Technical	1 042	382	466	199	2 089
Food industry and home economics	8	52	2	3	65
Agriculture and fishing	196	209	65	84	554
Health care	516	744	152	253	1 665
Public security	57	1	-	-	58

For further information visit www.statbank.dk/03

Table 97

Highest general education completed by population 2003

	1 - 8 grade or not known	9 – 10 grade	Upper- secondary school, higher preparatory examination, adult upper- secondary school	Higher commercial education, higher tech. education, and entrance examination for technical colleges	Total
Age on 1 Jan. 2003					
Total	1 219 067	1 653 638	698 500	229 763	3 800 968
15 - 24 years	119 733	320 880	106 591	47 951	595 155
25 - 29 years	25 463	168 927	112 842	58 064	365 296
30 - 39 years	63 782	442 523	223 018	87 530	816 853
40 - 49 years	155 040	400 291	168 623	28 075	752 029
50 - 59 years	495 564	196 449	58 808	6 412	757 233
60 - 69 years	359 485	124 568	28 618	1 731	514 402
Men	646 937	856 112	296 011	116 071	1 915 131
15 - 24 years	63 684	174 928	38 954	24 777	302 343
25 - 29 years	13 163	99 856	43 053	27 831	183 903
30 - 39 years	36 870	247 052	90 786	40 978	415 686
40 - 49 years	90 927	197 561	76 424	16 362	381 274
50 - 59 years	265 452	80 399	30 338	4 764	380 953
60 - 69 years	176 841	56 316	16 456	1 359	250 972
Women	572 130	797 526	402 489	113 692	1 885 837
15 - 24 years	56 049	145 952	67 637	23 174	292 812
25 - 29 years	12 300	69 071	69 789	30 233	181 393
30 - 39 years	26 912	195 471	132 232	46 552	401 167
40 - 49 years	64 113	202 730	92 199	11 713	370 755
50 - 59 years	230 112	116 050	28 470	1 648	376 280
60 - 69 years	182 644	68 252	12 162	372	263 430

Table 98

Highest education completed analysed by age and sex 2003

Age on 1 Jan. 2003	Basic school or not known	General upper- secondary education	Vocational education and training	Short-cycle higher education	Medium-cycle higher education	Bachelor	Long-cycle higher education	Total
per cent								
Total	32.1	4.4	38.7	4.5	13.5	0.8	6.2	2 840 517
30 - 39 years	23.9	7.6	39.9	5.5	13.2	1.9	8.0	816 853
40 - 49 years	30.2	4.8	37.7	4.9	15.4	0.5	6.5	752 029
50 - 59 years	32.1	2.6	41.0	4.2	14.3	0.2	5.6	757 233
60 - 69 years	47.8	1.2	34.7	2.7	10.0	0.1	3.5	514 402
Men	29.8	4.4	42.5	4.8	10.2	0.7	7.6	1 428 885
30 - 39 years	25.7	6.9	41.9	6.3	9.1	1.5	8.6	415 686
40 - 49 years	28.7	5.1	42.6	5.0	10.1	0.6	7.9	381 274
50 - 59 years	28.3	3.0	44.7	4.4	11.8	0.3	7.6	380 953
60 - 69 years	40.4	1.4	40.0	2.9	9.8	0.1	5.4	250 972
Women	34.4	4.3	34.8	4.1	16.8	0.8	4.7	1 411 632
30 - 39 years	22.0	8.4	37.9	4.6	17.3	2.3	7.5	401 167
40 - 49 years	31.8	4.6	32.7	4.7	20.8	0.4	5.0	370 755
50 - 59 years	36.0	2.1	37.2	4.0	16.9	0.1	3.6	376 280
60 - 69 years	54.9	1.0	29.6	2.6	10.2	0.0	1.7	263 430

For further information visit www.statbank.dk/hfu1

Table 99**Highest education completed analysed by county of residence 2003**

30-69 year-olds Place of residence on 1 Jan. 2003	Basic school or not known	General upper- secondary education	Vocational education and training	Short-cycle higher education	Medium-cycle higher education	Bachelor	Long-cycle higher education	Total
Total	911 575	124 140	1 097 955	127 415	382 877	21 485	175 070	2 840 517
Copenhagen Municipality	72 812	21 281	66 992	11 541	34 230	4 605	30 816	242 277
Frederiksberg Municipality	10 172	4 242	12 961	2 662	7 912	986	8 983	47 918
Copenhagen County	89 433	18 761	125 544	16 366	45 770	2 850	32 467	331 191
Frederiksborg County	52 901	10 988	80 980	11 186	33 675	1 660	18 753	210 143
Roskilde County	36 037	5 863	58 894	6 884	17 851	869	7 968	134 366
West Zealand County	58 279	4 915	66 912	6 537	20 091	658	5 235	162 627
Storstrøm County	54 067	3 973	59 767	5 127	16 505	445	4 034	143 918
Bornholm Municipality	9 480	626	9 920	811	2 798	44	638	24 317
Funen county	83 850	8 886	99 247	10 706	34 852	1 310	10 333	249 184
South Jutland County	48 905	3 500	55 484	5 628	15 973	679	4 122	134 291
Ribe County	42 761	3 289	47 609	5 091	14 645	550	3 203	117 148
Vejle County	64 014	6 007	74 878	8 784	24 604	1 066	6 377	185 730
Ringkøbing County	53 499	4 321	57 859	5 452	16 882	669	3 884	142 566
Århus County	96 573	16 119	128 189	16 008	50 851	3 250	23 720	334 710
Viborg County	45 244	3 804	49 516	4 736	14 384	453	4 159	122 296
North Jutland County	93 548	7 565	103 203	9 896	31 854	1 391	10 378	257 835

 For further information visit www.statbank.dk/hfu1

Table 100

Highest completed education, by labour market 2002

30 - 69 year-olds	Students	Non-students			Total
		Employed	Unem- ployed	Not in the labour force	
Total	63 658	1 999 662	83 181	670 134	2 816 635
Basic school ¹	15 416	502 593	34 137	371 788	923 934
General upper-secondary education	11 215	86 251	3 777	17 826	119 069
Vocational education and training	18 688	838 291	31 980	201 256	1 090 215
Higher education	18 339	572 527	13 287	79 264	683 417
Men	23 564	1 069 669	40 718	283 429	1 417 380
Basic school ¹	5 162	266 905	15 856	139 615	427 538
General upper-secondary education	4 893	45 220	1 855	8 159	60 127
Vocational education and training	6 090	481 911	16 587	100 783	605 371
Higher education	7 419	275 633	6 420	34 872	324 344
Women	40 094	929 993	42 463	386 705	1 399 255
Basic school ¹	10 254	235 688	18 281	232 173	496 396
General upper-secondary education	6 322	41 031	1 922	9 667	58 942
Vocational education and training	12 598	356 380	15 393	100 473	484 844
Higher education	10 920	296 894	6 867	44 392	359 073


¹ Incl. not known.
 For further information visit www.statbank.dk/hfu2

Table 101

Students in courses of adult and supplementary education 2002

	Students by highest completed level of education							
	Basic school or not stated	General upper secondary education	Vocational education and training	Short-cycle higher education	Medium-cycle higher education	Bachelor	Long-cycle higher education	Total number of courses
Public courses								
Total ¹	231 456	48 172	286 541	29 511	70 580	3 059	10 669	679 988
General education (9/10 grade).	105 336	15 466	52 060	5 274	13 064	501	3 042	194 743
Preparatory education	53 400	3 088	32 825	2 812	7 972	118	1 342	101 557
Higher preparatory examination	48 634	9 356	18 589	2 408	4 923	353	1 653	85 916
Folk and youth high schools	3 302	3 022	646	54	169	30	47	7 270
Adult vocational training centres	99 848	16 499	178 463	14 207	6 235	847	1 274	317 373
Educational	3 561	375	3 176	142	118	22	10	7 404
Commercial and clerical	19 762	6 963	55 520	4 914	2 494	484	531	90 668
Construction	5 575	298	7 183	518	327	3	56	13 960
Iron and metal	51 135	5 229	81 683	5 354	2 050	185	402	146 038
Printing and publishing	104	55	559	60	48	4	7	837
Other technical and manufacturing	2 827	398	3 277	1 633	266	13	50	8 464
Services	5 382	1 196	7 862	580	310	48	81	15 459
Food industry and home economic	7 239	1 621	8 216	675	402	57	91	18 301
Agriculture and fishing	2 859	237	4 044	235	115	23	40	7 553
Health	1 404	127	6 943	96	105	8	6	8 689
Vocational schools	24 468	13 846	53 093	8 950	16 539	1 372	4 428	122 696
Higher commercial examination	462	646	745	187	225	76	196	2 537
Higher technical examination	81	46	140	34	51	4	24	380
Commercial and clerical	9 843	3 086	17 369	2 435	6 197	321	1 268	40 519
Construction	10	-	25	7	8	-	-	50
Other technical and manufacturing	6 429	1 815	11 368	2 433	5 245	241	1 340	28 871
Food industry and home economic	9	2	36	1	-	-	-	48
Agriculture and fishing	191	40	212	24	35	1	5	508
Other courses	200	82	707	78	572	6	37	1 682
Communication and business languages (short-cycle)	3	11	25	6	10	-	9	64
Social science (short-cycle)	6 984	7 946	21 604	3 489	4 093	718	1 510	46 344
Technical (short-cycle)	252	172	846	255	103	5	39	1 672
Food industry and home economics (short-cycle)	-	-	9	-	-	-	-	9
Technical (medium-cycle)	4	-	7	1	-	-	-	12
Institutions of higher education²	1 804	2 361	2 925	1 080	34 742	339	1 925	45 176
Teacher train. courses (medium-cycle)	1 600	1 227	1 509	488	34 089	105	1 316	40 334
Ling. Merc. Bachelor's degree, ED	14	32	42	61	36	51	29	265
Bachelor of Science (economics); HD	190	1 102	1 374	531	617	183	580	4 577

¹ Includes only courses which is public financed and supervised ² Includes only teacher training colleges, The Danish University of Education and at The Business Schools: Ling. Merc. Bachelor's degree, Bachelor of Science (economics).

For further information visit www.statbank.dk/veu21

Table 102**Participants in courses by private course organizers**

	2001	2002	Change
Total	385 700	350 900	- 34 800
Private commercial organizers of courses	157 100	130 200	- 26 900
Employer and trade organizations	34 900	39 900	5 000
Employee organizations	56 300	54 300	- 2 000
Associations of Graduates	20 800	22 000	1 200
Non-profit institutions, associations and societies	71 800	61 500	- 10 300
Schools of public administration	30 000	31 300	1 300
Adult education associations	14 800	11 700	- 3 100

Table 103

Participants in courses by private course organizers, by type of course

	2001	2002	Change
Total	385 700	350 900	- 34 800
Management and human resource development	72 400	59 700	- 12 700
Law, economics, insurance and financing	23 600	27 900	4 300
Purchasing, sales and service	50 000	36 600	- 13 400
Exports	100	800	700
Edp	62 900	53 700	- 9 200
Presentation and training technique	4 100	3 000	- 1 100
Communication and media technique	6 200	10 400	4 200
Environment and safety	8 400	6 700	- 1 700
Personal development and training	27 100	16 100	- 11 000
Language	2 800	2 800	0
Politics, cooperation, etc.	49 500	53 100	3 600
Public administration	22 300	20 500	- 1 800
Other courses, including special training	41 600	47 800	6 200
General courses, not further specified	14 800	11 700	- 3 100

Table 104

Books published 2003

Decimal classification		Books and pamphlets						
		Type		Edition		Total	Of which	
							School text books ^{1,2}	Children's books ¹
		Pamphlets (17-48 pages)	Books (over 48 pages)	First editions	Revised editions			
number of titles								
	Total	4 726	10 117	12 411	2 432	14 843	982	1 543
82-88	Fiction, total	1 024	2 052	2 433	643	3 076	428	1 134
	Novels and short stories	38	1 287	846	479	1 325	49	999
	Plays	3	27	29	1	30	1	12
	Poetry	75	91	161	5	166	-	42
	Comics, etc.	11	32	42	1	43	-	81
	Books for children and young persons	897	615	1 355	157	1 512	378	.
	00-81,89-99	Non-fiction, total	3 702	8 065	9 978	1 789	11 767	554
00-07	General	75	321	376	20	396	8	6
10-19	Philosophy	287	486	687	86	773	13	14
20-29	Religion	75	272	299	48	347	13	28
30-39, 59	Sociology	1 130	1 872	2 510	492	3 002	78	54
40-49	Geography and travel	131	291	309	113	422	22	29
50-58	Natural sciences	355	558	831	82	913	112	88
60-69	Applied sciences	1 043	2 344	2 807	580	3 387	45	87
70-79	Arts, games, sports	325	728	934	119	1 053	24	52
80-81,89	Literature, languages	142	367	433	76	509	202	10
90-99	History	139	826	792	173	965	37	41

Note. The table shows the number of titles registered by the Danish Bibliographic Centre on the basis of the Danish National Bibliography, and because of the time taken to register titles may vary by up to 5 per cent in relation to the number of titles published during the year. Unchanged editions, newspapers, journals, and annual publications, as well as foreign books under commission and publications in microfilm (5 210 titles in 2003) have not been included.

¹ No books are included in statistics for both school text books and children's books. ² Not including text books for higher-education establishments, further education, adult education, and self-study.

Source: Danish Bibliographic Centre.

Table 105

Books translated 2003

	Original language								Translations, total
	Swedish	Norwegian	Other Nordic languages ¹	English/ American	German	French	Russian	Other languages	
	number of titles								
Translations, total	301	106	15	1 925	136	123	11	135	2 752
Fiction	147	48	10	1 120	54	69	7	101	1 556
Non-fiction	154	58	5	805	82	54	4	34	1 196

¹ Finnish, Faroese, Greenlandic, Icelandic and Oldicelandic.

Source: Danish Bibliographic Centre.

Table 106

Daily newspapers 2003

	Number of daily newspapers		Circulation	
	Weekdays	Sundays	Weekdays	Sundays
	thousands			
Daily newspapers, total¹	32	10	1 378	1 251
By size of cir. per issue:				
Under 10 000	6	-	36	-
10 000-19 999	10	-	150	-
20 000-29 999	5	-	122	-
30 000-49 999	-	-	-	-
50 000-99 999	6	5	397	383
100 000 +	5	5	673	868

¹ Average circulation (papers per day) measured in the first half year of 2003.

Source: *Dansk Oplagsbulletin 2003* (Bulletin of the Danish Audit Bureau of Circulations).

Table 107

The 20 largest daily newspapers 2003

	Circulation ¹	
	Weekdays	Sundays
	thousands	
Jyllands-Posten, Morgenavisen	172	231
Berlingske Tidende	142	165
Politiken	137	173
B.T.	110	154
Ekstra Bladet	110	145
JydskeVestkysten	82	94
Nordjyske Stiftstidende	82	93
Fyens Stiftstidende	62	79
Børsen	62	•
Århus Stiftstidende	55	54
Dagbladet/Frederiksborg Amts Avis	54	•
Næstved Tidende/Sjællands Tidende	30	•
Vejle Amts Folkeblad/Fredericia Dagblad	26	•
Lolland-Falsters Folketidende	24	•
Information	21	•
Kristelig Dagblad	22	•
Fyns Amts Avis	19	•
Horsens Folkeblad	17	•
Holbæk Amts Venstreblad	18	•
Midtjyllands Avis	17	•

Note. In addition to the figure above there are following newspapers: 10 Minutter, ErhvervsBladet, MetroXpress and Urban. The average circulation per day was 24.126, 102.821, 184.009 and 182.462 respectively.

¹ Average circulation (papers per day) measured in the first half year of 2003.

Source: *Dansk Oplagsbulletin 2003* (Bulletin of the Danish Audit Bureau of Circulations).

Table 108

Journals, periodicals and magazines 2003

	By size of circulation per issue					Total
	Under 10 000	10 000 -19 999	20 000 -49 999	50 000 -99 999	100 000 +	
Journals and periodicals¹	32	10	6	2	3	53
By frequency:						
Weekly	-	-	1	1	-	2
Fortnightly	6	-	1	-	-	7
Monthly	14	5	3	-	1	23
Under 10 issues annually	12	5	1	1	2	21
Magazines²	3	14	18	12	9	56
By frequency:						
Weekly	1	2	-	4	8	15
Fortnightly	1	2	1	3	-	7
Monthly	1	9	14	4	1	29
Under 10 issues annually	-	1	3	1	-	5

¹ 1st July 2002 - 30th June 2003. ² Verified circulation, first half year.

Source: *Dansk Oplagsbulletin 2003* (Bulletin of the Danish Audit Bureau of Circulations).

Table 109

Magazines (excluding free magazines) 2003

	Circulation		Circulation
	thousands		thousands
Major magazines¹			
Familie Journalen	231	Bo Bedre	76
SE og Hør	195	Anders And og Co.	66
Hjemmet	192	Komputer for alle	64
Billed Bladet	183	Illustreret Videnskab	63
Ude og Hjemme	170	Hendes verden	55
Her og nu	131	Mad og Bolig	51
Kig ind	108	Woman	50
Ugebladet SØNDAG	101	Vi unge	49
Femina	87	Ingelise - alt om håndarbejde	48
Alt for Damerne	85	I form	48

¹ Circulation monitored.

Source: *Dansk Oplagsbulletin 2003* (Bulletin of the Danish Audit Bureau of Circulations).

Table 110

Advertising expenditure

	2001		2002	
	DKK mio.	per cent	DKK mio.	per cent
Advertising expenditure, total	24 454	100.0	24 395	100.0
Press advertising turnover, total	8 359	34.2	7 636	31.3
Daily papers	2 983	12.2	2 697	11.0
Magazines	364	1.5	333	1.4
Professional journals, etc.	1 107	4.5	911	3.7
Local papers	2 255	9.2	2 097	8.6
Other	1 650	6.8	1 598	6.6
Other advertising activities, total	16 095	65.8	16 759	68.7
Radio	234	1.0	222	0.9
TV	1 747	7.1	1 675	6.9
Cinemas	50	0.2	70	0.3
Printed matter	6 704	27.4	6 864	28.1
Sports sponsorship	680	2.8	776	3.2
Outdoor advertising	343	1.4	336	1.4
Internet	310	1.3	418	1.7
Telemarketing	418	1.7	428	1.8
Exhibitions and conferences	1 132	4.6	1 422	5.8
Commercial articles	412	1.7	448	1.6
Costs for administration and production	4 299	17.6	4 100	16.8

Note. Advertising expenditure is calculated at factor prices, i.e. the price the purchaser of an advertisement pays, excluding taxes.

Source: *The advertising expenditure survey in Denmark 2002*, Danish Audit Bureau of Circulation.

Table 111

The Danish Broadcasting Corporation and TV 2/DANMARK, revenue and expenditure

	Danish Broadcasting Corporation		TV 2/DANMARK	
	2001	2002	2001	2002
	— thousands —			
Radio and TV licenses¹				
Combined radio and TV licences	2 156 ²	2 154 ³	2 156 ²	2 154 ³
Of which: Black-and-white TV licences	10	9	10	9
Colour TV licences	2 146	2 145	2 146	2 145
Licences for radio only	91	93	•	•
Radio licences, total	2 247²	2 247³	•	•
	— mio. kr. —			
Annual accounts				
Revenue, total	2 924	2 990	1 608	1 658
Of which: Licenses	2 675	2 765	537	556
Commercial, sponsors	11	4	1 007	1 028
Other	238	221	64	74
Total expenditure	2 738	2 877	1 488	1 533

¹ The Danish Broadcasting Corporation collects the total TV license fees for the Danish Broadcasting Corporation and TV 2/DANMARK. ² 1 Jan. 2002. ³ 1 Jan. 2003.

Source: Danish Broadcasting Corporation and TV 2/DANMARK.

Table 112

Hours of radio broadcasting

	Danish Broadcasting Corporation			
	2001		2002	
	Analog	Digital	Analog	Digital
	hours			
Radio hours of broadcasting, total	56 634	28 825	55 912	57 792
Channel 1	8 760		8 760	
Channel 2	8 760		8 760	
Channel 3	8 760		8 760	
Channel 4	24 833		24 242	
Channel 5/6	1 871		1 740	
Short wave	3 650		3 650	
Democracy		600		600
DR Jazz				3 336
DR Classical		8 377		8 760
DR Plus				5 832
DR Rock				4 080
Boogie Skum		8 760		8 760
Ghetto Skum		5 544		8 760
Electric Skum		5 544		8 760
DR Soft				4 080
DR Sport				72
DR News				4 752
By kind of programme	56 634	28 825	55 912	57 792
News service	8 245	421	7 946	5 158
Current affairs	16 076	695	16 294	5 284
Information and culture	5 080	120	5 169	1 182
Drama/Fiction	553	3	560	-
Music	15 139	27 545	14 208	42 747
Entertainment	8 784	29	8 535	3 342
Sports	941	-	974	72
Presentation and Service	1 816	12	2 226	7

Source: Danish Broadcasting Corporation.

Table 113

Hours of television broadcasting

	DR (Danish Broadcasting Corporation)		TV 2/DANMARK	
	2001	2002	2001	2002
	hours			
Television hours of broadcasting, total	8 832	9 775	7 842	8 456
National TV, total	8 832	9 775	5 509¹	5 895¹
News service ²	789	1 152	491	462
Current affairs	1 120	1 198	744	910
Information and culture	2 663	2 673	578	357
Education	437	336	-	-
Music	216	528	49	55
Entertainment	537	647	413	264
Danish drama	423	434	233	224
Foreign drama	1 851	1 953	2 232	2 570
Sports	480	533	495	781
Programme introduction & service	316	321	274	272
Other	-	-	-	-
Regional TV, total	•	•	1 652	1 596
Advertising	•	•	681	965
By kind of production³				
Own productions	2 619	2 770	1 768	2 226
Other productions	1 783	1 954	4 602	5 457
Repeat broadcasts	4 430	5 051	2 997	3 190

¹ Excl. TV 2 Zulu. ² Excl. Text-TV. ³ For TV 2/DANMARK excl. regional TV and advertising.

Source: DR (Danish Broadcasting Corporation) and TV 2/DANMARK.

Table 114

Average television viewing per day: Danish and other TV-channels 2003

	4-11 years	12-20 years	21-34 years	35-54 years	55 years +	Total	Men	Women
	hours : minutes per day							
All stations	01:27	01:39	02:48	02:37	03:24	02:38	02:33	02:42
Danish Broadcasting Corporation	00:36	00:22	00:38	00:48	01:07	00:47	00:45	00:49
DR2	00:01	00:02	00:05	00:06	00:11	00:06	00:06	00:06
TV 2	00:17	00:32	00:55	00:57	01:19	00:55	00:50	01:00
TV 2 Zulu	00:01	00:03	00:06	00:03	00:02	00:03	00:04	00:03
TV3	00:05	00:09	00:18	00:11	00:07	00:10	00:09	00:11
TV3+	00:02	00:06	00:09	00:05	00:05	00:06	00:06	00:05
TVD1	00:01	00:03	00:05	00:03	00:03	00:03	00:03	00:03
TVD2	00:03	00:08	00:12	00:07	00:07	00:07	00:06	00:09
Other TV	00:21	00:14	00:20	00:17	00:23	00:21	00:24	00:16

Source: Gallup A/S and the Danish Broadcasting Corporation's media research.

Table 115

Household access to TV-channels 2003

	Number of house- holds	Number of house- holds with television- sets		Number of house- holds	Number of house- holds with television- sets
	thousands	per cent		thousands	per cent
Total number of households per 1 Jan. 2003	2 467		Service / InfoChannel	751	31
Of which households with television sets	2 401	100	RTL+ (Germany)	721	30
DR 1	2 395	100	NDR (Germany)	687	29
TV 2	2 393	100	NRK/Norway 1	645	27
DR 2	1 945	81	Sat1 (Germany)	617	26
TvDanmark 2	1 798	75	Fox Kids	546	23
TV3	1 657	69	TV5 (France)	546	23
3+	1 561	65	Ønskekanalen	412	17
TvDanmark 1	1 313	55	VH-1 (Great Britain)	389	16
Discovery Channel	1 281	53	Pro 7 (Germany)	364	15
Eurosport (Great Britain)	1 223	51	RTL2 (Germany)	284	12
Sweden 1	1 206	50	Sky News (Great Britain)	215	9
TV 2 Zulu	1 186	49	TV3 Sweden	202	8
Sweden 2	1 170	49	TV6	197	8
CNN (Great Britain)	1 167	49	Disney Channel	162	7
DK4	1 102	46	ZTV	152	6
ARD (Germany)	1 098	46	TV3 Norway	144	6
MTV	1 080	45	Super RTL (Germany)	142	6
TV4 Sweden	1 074	45	VOX	133	6
BBC World (Great Britain)	995	41	CNBC	132	5
Animal Planet (Great Britain)	961	40	TV1000	123	5
BBC Prime (Great Britain)	956	40	Canal+ (Denmark)	116	5
Cartoon Network	946	39	TV1000 Cinema	110	5
TV2 Norway	923	38	DSF	101	4
ZDF (Germany)	884	37	Playboy Channel	85	4
Viasat Sport DK	836	35	Discovery Travel and adventure channel	65	3
National Geographic Channel (Great Britain)	820	34	Discovery Civilization Channel	51	2
TCM	802	33	Viasat Ticket	49	2
Hallmark	782	33	Discovery Science Channel	35	1

Note. Figures are based on question: Which of the following TV channels can permanently or occasionally be received by at least one of the television sets in the household.

Source: Gallup A/S, *Annual Survey 2003*.

Table 116

Cinemas 2003

	Copenhagen and Frederiks- berg Munici- palities	Other islands	Jutland	Cinemas, total	Of which multi-screen cinemas ¹
Cinemas at end of year					
Number of cinemas	12	78	76	166	71
Number of cinema screens	55	153	171	379	284
Seating capacity (thousands)	10	24	24	58	43
Cinema activity					
Paid admissions (thousands)	4 034	4 050	4 213	12 297	10 468
Admissions takings excl. VAT (DKK mio.)	203	182	197	582	498
Film hire (DKK mio.)	91	82	91	264	225

Note. Includes public showings of feature films.

¹ More than one screens operated by the same owner in the same building.

Table 117

Films by nationality 2003

	Number of films shown	Paid admissions	Admission takings total	Film hire	Film hire as percentage of admissions takings
		thousands	DKK thousands		per cent
Films shown in cinemas, total	629	12 297	582 108	264 313	45
Danish	133	3 167	134 869	59 057	44
Foreign, total	496	9 130	447 239	205 256	46
Of which European	170	1 246	55 365	24 078	43
American	279	7 591	378 893	176 157	46
Other	47	293	12 981	5 021	39

Note. Includes public showings of feature films.

Table 118

Films, by year when first shown 2003

	Number of films shown	Paid admissions	Admissions takings, total	Film hire	Film hire as percentage of admissions takings
		thousands	DKK thousands		per cent
Films shown in cinemas, total	629	12 297	582 108	264 313	45
2003	209	10 909	513 086	234 126	46
2002	130	1 264	65 020	28 605	44
2001	59	38	1 371	529	39
1996-2000	119	31	672	289	43
1991-1995	33	6	207	90	44
1981-1990	28	34	1 268	465	37
1971-1980	21	6	255	109	43
1961-1970	7	1	43	18	41
1960 and before	23	8	186	82	45

Note. Includes public showings of feature films.

Table 119

Films, by censor rating 2003

	Number of films shown	Paid ad- missions	Admissions takings, total	Film hire	Film hire as percentage of admissions takings
		thousands	DKK thousands		per cent
Films shown in cinemas, total	629	12 297	582 108	264 313	45
Permitted for all ¹	258	4 852	205 645	89 142	43
Permitted for children over 11	154	5 573	285 713	135 028	47
Permitted for children over 15	87	1 590	78 965	35 815	45
Uncensored or not stated	130	282	11 785	4 328	37

Note. Includes public showings of feature films. According to The Film Censorship Act, all films for public showing to children under 11 or 15 years old must be approved by the Media Council for Children and Young People.

¹ Incl. films which after 1 August 1980 are approved for all, but children under 7 years old are advised not to see them.

Table 120

The 10 most popular films shown in cinemas

1976-2003			2003		
Week and year when first shown	Film titles	Total number of paid admissions	Week and year when first shown	Film titles	Total number of paid admissions
		thousands			thousands
1 04-98	Titanic	1 363	1 51-03	The Lord of the Rings: The Return of the King	620
2 51-01	The Lord of the Rings: The Fellowship of the Ring	1 324	2 51-02	Lord of the Rings: The Two Towers	600
3 40-76	Olsen banden ser rødt ¹	1 201	3 04-03	Die Another Day	458
4 11-76	One Flew over the Cuckoo's Nest	1 120	4 21-03	The Matrix Reloaded	406
5 51-02	Lord of the Rings: The Two Towers	1 115	5 08-03	Arven ¹	374
6 39-77	Olsen banden deruda ¹	1 045	6 14-03	Anja efter Viktor ¹	346
7 51-82	E.T. –The Extra Terrestrial	1 019	7 46-03	Finding Nemo	318
8 37-78	Grease	1 006	8 37-03	Pirates of the Caribbean: The Curse of the Black Pearl	311
9 40-78	Olsen banden går i krig ¹	1 006	9 27-03	Bruce Almighty	309
10 08-86	Out of Africa	999	10 41-03	Møgunger ¹	298

¹ Danish film.

Table 121

Music sales 2003

	Sales		Turnover	
	2002	2003	2002	2003
	number		thousand DKK	
Total¹	12 242 315	9 925 148	798 144	673 170
CD-albums	10 379 755	7 996 162	672 164	517 454
LP	6 778	7 004	597	641
MC	27 361	40 337	1 469	1 559
DVD-audio	280	12 410	28	1 166
CD-sets ²	1 209 731	1 501 145	110 529	143 860
Mini-disc	166	2 642	13	21
CD-maxi	559 995	300 467	12 345	6 525
CD-single	47 713	48 548	717	705
Other	10 536	16 433	282	1 239

Note. The members of IFPI Denmark are Danish and foreign record companies. The turnover of these record companies account for more than 95 per cent of the total sale in Denmark.

¹ Incl. Greenland and The Faeroe Islands. ² Double-albums and similar products containing more than one phonogram in one product.

Source: IFPI Denmark.

Table 122

Danish National Archives and provincial archives 2003

	Collections		Material received under delivery schemes	Reading rooms		Long-distance loans Circulation	Staff paid out of own budget
	Total shelf capacity	Size at the end of the year		Visitors	Circulation		
	thousand metres		metres	thousands		number	
Archives total	343	335	7 589	86	231	15 929	194
Danish National Archives	161	155	4 943	24	67	7 996	96
Provincial archives in:							
Copenhagen	50	48	-	21	44	1 381	20
Odense	24	16	615	12	8	646	12
Viborg	47	50	1 466	16	90	3 874	31
Aabenraa	14	17	108	5	12	492	8
Industrial Archives	47	49	457	8	10	1 540	15
Danish Data Archives	-	-	-	-	-	-	12

Source: Danish National Archives.

Table 123

The Danish Arts Foundation 2002

	3-year scholarships	Lump sum grants	Competitions and prizes	Purchases	Other grants	Total
DKK thousands						
Total	16 560	32 895	1 630	6 208	2 878	60 171
Visual arts	5 760	8 319	560	2 481	2 579	19 699
Literature	2 160	6 745	400	380	-47	9 638
Composers, contemporary music	1 440	2 802	225	989	-42	5 414
Composers, classical music	1 440	2 190	145	1 531	231	5 537
Applied arts and designing	4 320	5 562	100	310	64	10 356
Architecture	-	3 218	-	-	97	3 315
Film and theatre	1 440	4 059	200	517	-4	6 212

Note. Awards, etc. under the Danish Arts Foundation Act of 12 April 1978 and later amendments.

Source: Annual report of the Danish Arts Foundation.

Table 124

Libraries 2002

	Full-time staff at end of year		Expenditure (Accounts figures)		Books, periodicals and other media	
	Total	Of whom librarians	Total	Of which salaries	Stock at the end of the year	Circulation during the year
	number		DKK mio.		thousands units	
Public libraries, total	5 142	2 326	2 656	1 556	30 647	72 236
Central libraries	1 921	850	961	569	10 130	29 349
Other full-time libraries	3 221	1 476	1 695	987	20 517	42 887
School libraries	2 750	2 272	27 910	22 193
Research libraries, total	1 583	812	828	512	41 828	8 313
The Royal Library, Copenhagen	343	155	159	115	17 177	1 290
University libraries and libraries at institutes of higher education	871	418	495	289	14 357	5 147
Other libraries at institutes of higher education	149	99	48	34	1 566	1 288
Libraries at institutes	32	18	2 407	173
Special libraries	220	140	94	56	6 321	415

Source: Danish National Library Authority and information from the Ministry of Education (School libraries).

Table 125

Public libraries: lending of books per capita 2002

	Places of service open to the public	Stock			Lendings		
		Books per capita	Books per adult (14 years+)	Books per child (0-13 years)	Books per capita	Books per adult (14 years+)	Books per child (0-13 years)
Public libraries	764	4.98	4.08	9.18	9.41	7.23	19.56
Copenhagen Municipality	23	3.69	3.13	7.05	9.47	7.78	19.78
Frederiksberg Municipality	5	3.92	3.53	6.49	11.48	9.46	25.01
Copenhagen County	61	5.86	4.89	10.26	10.99	8.68	21.44
Frederiksborg County	39	5.82	4.57	11.09	10.02	7.27	21.62
Roskilde County	31	5.38	4.38	9.62	10.07	7.34	21.70
West Zealand County	43	5.35	4.36	9.91	9.06	7.05	18.33
Storstrøm County	43	5.26	4.24	10.55	7.92	6.28	16.41
Bornholm County	8	7.14	5.57	15.17	9.39	6.64	23.44
Funen County	74	5.19	4.08	10.50	8.93	6.77	19.19
South Jutland County	36	5.04	3.91	10.09	8.12	6.03	17.53
Ribe County	51	5.20	4.52	8.12	8.51	6.53	16.95
Vejle County	43	4.73	3.93	8.28	8.32	6.46	16.54
Ringkøbing County	48	5.40	4.53	9.12	10.05	7.31	21.68
Århus County	90	3.64	2.99	6.62	9.73	7.56	19.59
Viborg County	62	5.62	4.53	10.32	9.01	6.22	21.14
North Jutland County	107	5.03	4.21	8.88	8.87	6.87	18.30

Source: Danish National Library Authority.

Table 126

Admissions to museums 2002-2003

	2002	2003		2002	2003
				— thousands —	
Total number of museums	271	267			
Museums under the National Museum	5	5	Moesgård Museum	70	98
Local history museums	130	127	Hjerl Hede Open Air Museum	100	96
Special-subject history museums	65	65	Danish Agricultural Museum, Gl. Estrup	90	84
Art museums	54	53	Jutland Manor House Museum, Gl. Estrup	90	84
Natural science museums	11	11	Danmarks Railway Museum	69	75
Other museums	6	6	Tøjhusmuseet (Danish Defence Museum)	68	70
			Museum of Amalienborg	47	62
Admissions	— thousands —		Valdemar Castle	66	62
a. Museums under the National Museum	531	606	Workers Museum, Copenhagen	92	50
Of which:			Danish Museum of Electricity	58	50
National Museum Prince's Palais	354	410	National Museum of Science and Technology	53	48
Industrial Works of Brede/Open Air Museum, Lyngby	105	122	Danish Maritime Museum	40	41
Resistance Museum	40	39	Women's Museum in Denmark	43	40
			Danish Museum of Printing/Danish Press Museum	25	39
b. Local historical museums, total	2 517	2 496	Steno Museum	37	35
Of which:			Industrimuseet, Horsens	30	33
Museum at Koldinghus	99	114	Spøttrup Borgmuseum	35	33
Skjern-Egvad Museum	96	103	Sporvejsmuseet	26	32
H.C. Andersens House	112	97			
Funen Village	83	89	d. Art museums, total	2 646	2 461
Museum of Langeland	83	79	Of which:		
Hanstholm Museum	58	60	Louisiana	588	438
Den Antikvariske samling, Ribe	55	53	Ny Carlsberg Glyptotek	332	347
Andelslandsbyen Nyvang	50	49	National Museum of Art	250	276
Haderslev Museum	47	47	Arken	180	146
Museum at Sønderborg Castle. Culture-Hist. Dep.	49	43	Skagens Museum	147	138
Lützhøfs Købmandsgård	34	40	Thorvaldsens Museum	63	69
Københavns Bymuseum	36	39	Danish Museum of Decorative Art	61	59
Aalborg Historical Museum	11	39	Kunstmuseet Trapholt	58	52
Morsland Historical Museum	36	38	North Jutlands Art Museum	44	48
House of Fisheries	32	37	Johannes Larsen Museum	46	47
Strandingsmuseum "St. George"	42	36	Museet for Fotokunst	29	45
Silkeborg Museum	30	36	Århus Art Museum	55	44
Karen Blixen-Museum	51	35	Michael and Anna Anchers Hus and Saxilds Gaard	50	43
Tirpitz Stillingen	39	34	Museet at Sønderborg Castle, Art Gallery	49	43
Hellebæk-Ålsgårde Museum and Hammermøllen	33	31	Glasmuseum, Ebeltoft	34	33
Helsingør Municipality Museums	29	31	Silkeborg Art Museum	35	33
			Køge Skitsesamling	27	32
c. Special-subject historical museums, total	3 557	3 520	Bornholms Art Museum	46	32
Of which:			Den Hirschsprungske Samling	41	31
Den Gamle By	323	307			
North Sea Museum	266	263	e. Natural science museums, total	298	271
Egeskov Slot, Park, Veteranmuseum	188	206	Of which:		
Rosenborg Collection	173	191	Universitetets Zoological Museum	110	98
Kronborg Slot	206	181	Natural History Museum	57	53
Frederiksborgmuseet	200	177	Fur Museum	30	31
Fisheries and Maritime Museum	163	157			
PTT Museum of Denmark	148	145	f. Other museums, total	137	140
Viking Ship Museum	120	134	Of which:		
Fregatten Jutland	118	109	Lejre Experimental Centre	58	56
Danish Film Institute	109	105			
Museum Erotica	104	102	a-f. Total number of visitors¹	9 687	9 494

Note. Figures for total visitors only include museums for which number of visitors has been stated for both years. Double museums include both a cultural-historical department and an art department, and it is not possible to divide the figures between the two departments. The table includes museums with more than 30.000 visitors in 2003 only.

¹ The figures for total number of visitors only include visitors to double museums once.

Table 127

Admissions to zoological gardens

	2002	2003
Total number of zoological gardens	16	16
Admissions total	3 511 193	3 586 878
Copenhagen Zoo, Frederiksberg	1 130 534	1 196 803
Odense Zoo	390 505	417 370
Aalborg Zoological Garden	363 871	365 265
Løveparken/Givskud Zoo	325 772	338 005
Kattegatcentret	287 498	239 767
Jutlands Park Zoo	192 420	188 650
Denmarks Aquarium	164 500	160 805
Fjord- & Bælt, Kerteminde	89 803	71 000
Ebeltoft Zoo and Safari	72 000	70 169
Odsherred Zoo Dyrepark	40 000	40 335
Øresundsakvariet	32 759	33 375
Bornholms Sommerfuglepark & Tropeland	24 500	24 900
Skærup Mini Zoo	17 000	20 000

Note. Figures do not tally as some of the new zoological gardens want full discretion.

Table 128

State-subsidized theatres 2002/2003

	Permanent stages	Performances	Number of seats	Number of productions staged				Audience	
				Total	Of which Danish	New productions		Total	Paid admissions
						Total	Of which Danish		
			number					thousands	
State-subsidized theatres, total:	74	11 593	19 758	437	304	277	171	2 220	...
The Royal Theatre, total	3	607	2 193	40	9	25	5	437	401
Plays	...	360	...	12	3	11	3	174	153
Operas	...	115	...	14	2	7	2	132	127
Ballets	...	110	...	13	4	6	-	106	98
Operetta and musical	...	22	...	1	-	1	-	25	23
The regional theatres, total	20	2 080	6 412	62	29	61	29	624	540
Theatre cooperation of greater Copenhagen	8	892	3 606	21	11	21	11	337	293
Regional theatres outside Copenhagen	12	1 188	2 806	41	18	40	18	287	246
Other state-subsidized theatres, total	51	8 906	11 153	335	266	191	137	1 158	...
The Danish National Opera and Det Danske Teater	2	473	1 877	12	5	12	5	177	...
Local city-theatres	20	2 469	2 621	82	57	68	45	294	...
Local theatres	22	2 378	5 837	96	75	50	34	359	...
The touring children's theatre and itinerant theatres	3	1 496	371	47	41	11	10	125	...
Theatres subsidized by the Danish Arts Council	4	2 090	447	98	88	50	43	204	...

Note. Theatres' activities are excluding guest performances. The statistics concerns the season, running from 1 July to 30 June.

Table 129

Sports federations and youth and outdoor activities organizations

	Number of members	
	2002	2003
	thousands	
Youth organizations, total¹	107	102
The Danish Scout Association	30	29
Voluntary Christian Boys' and Girls' Association, FDF	30	29
YMCA Girl Guides in Denmark	8	7
YMCA Scouts in Denmark	31	30
Danish Baptists' Scout Organisation	2	1
DUI - LEG og VIRKE Children's Organisation	6	6
Sports Federations ²		
The Danish Sports Federations²	1 653	1 665
Badminton	128	124
Football (DBU)	293	308
Golf	104	113
Gymnastics	148	150
Handball	135	130
Riding	73	73
Sailing	55	56
Swimming	123	128
Tennis	73	71
Other federations	520	512
The Danish Gymnastics and Athletics Federations	1 483	...
Badminton	183	...
The Danish Rifle Federation	143	...
Football	250	...
Gymnastics	294	...
Handball	130	...
Swimming	154	...
Tennis	57	...
Other federations	217	...
Sports for families with children and disabled persons, etc.	28	...
Continuation schools, etc.	24	...
The Danish Firms' Sports Federations	325	315
Badminton	28	26
Football	53	49
Handball	6	6
Other sports	238	234
Other outdoor activities organizations		
The Danish Camping Association	165	195
The Danish Cyclist Federation	23	22
The Danish Society for the Conservation of Nature	145	143
The Danish Hunting Federation	93	93
The Danish Garden Society	56	56

¹ Includes members of the uniformed groups under the Børne- og Ungdomsorganisationernes Samråd (association for children's and youth organizations). ² Includes active members. If a person takes part in more than one sport, the person will usually be counted more than once.

Source: The organizations.

Table 130

The Danish Pools and Lotto Company

	2001	2002	2003
	DKK mio.		
Betting stakes and receipts, total¹	6 569	7 662	9 006
Expenditure	6 221	6 483	7 232
Of which to:			
Winnings after deduction of tax	2 765	2 917	3 572
Operating expenses etc.	1 087	1 123	1 138
State tax	940	981	1 016
Remaining surplus paid out for specific purposes:			
Athletics	543	567	583 ²
Culture	246	257	252
Societies	192	200	209
Youth and information work	175	183	188
Other	273	255	274

Note. C.f. Gaming, Lottery, and Betting Act consolidated in Consolidated Act no. 438 of 26 June 1998. In the period before this Act, previous statutory subsidies were distributed from the surplus left over.

¹ Incl. amounts provided for trusts and reserves under the Finance Act. ² Of which DKK 248 mio. for the Danish Sports Federation, DKK 226 mio. for the Danish Gymnastics and Sports Federations, and DKK 34 mio. for the Danish Firm's Sports Federation.

Source: Danish Pools and Lotto Company (Annual Report).

Table 131

Public expenditure on individual cultural areas 2001

	Constructive and creative activities				Preservation and dissemination of the cultural heritage			Further and higher educa-tions	Other cultural expen-diture ²	Culture total
	Grants to artists ¹	Music	Theatre	Films	Libraries	Archives etc.	Museums			
	DKK mio.									
Total expenditure	326	751	902	360	2 952	139	912	761	1 083	8 185
Central government	326	292	633	350	674	139	513	761	500	4 188
Counties	...	47	138	-	-	...	79	...	54	318
Municipalities	...	412	131	10	2 278	...	320	...	529	3 679
	DKK per citizen									
Total expenditure	61	140	169	67	552	26	170	142	202	1 530
Central government	61	55	118	65	126	26	96	142	93	783
Counties	...	9	26	-	-	...	15	...	10	59
Municipalities	...	77	24	2	426	...	60	...	99	688

Note. Public expenditure includes gross operating expenditure less any income and reimbursements from central government.

¹ Including authors etc. ² Including National Accounts account number 21.11 excl. 21.11.71-79, 21.81 (Radio and TV) and the Ministry of Cultural Affairs' share of pools and lottery money for general cultural purposes. Municipal expenditure includes account number 3.64 (other cultural tasks) in municipal accounts.

Source: National accounts and municipal accounts.