

Income, consumption and prices

1. Developments in income and consumption

Concepts of income

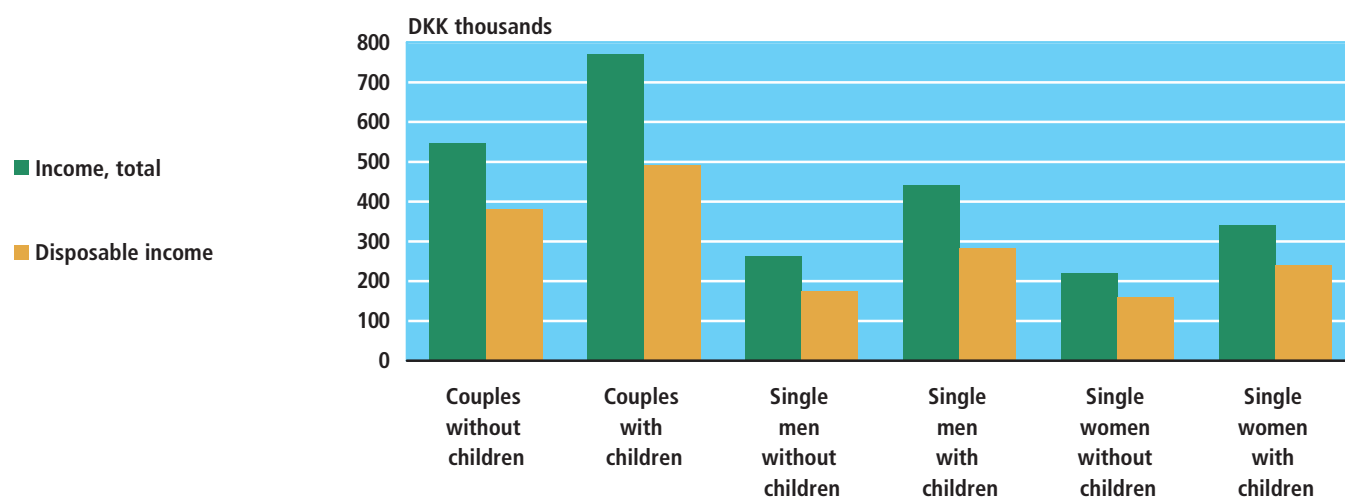
Income statistics comprise family-related as well as person-related statistics. The central concepts are *family income* and *personal income*. Family income is the sum of the following income types: Earned income, property income, transfer income and other family income and personal income is the sum of: Earned income, property income, transfer income and other personal income.

Couples with children earn most

When considering families, couples with children had the highest average income of DKK 770,900 in 2007. The corresponding figure for couples without children was DKK 545,500. When making such comparisons, it should be noted that couples without children are normally older than couples with children and that children may contribute to total family income to some extent.

Figure 1

Average family income. 2007



See table 215.

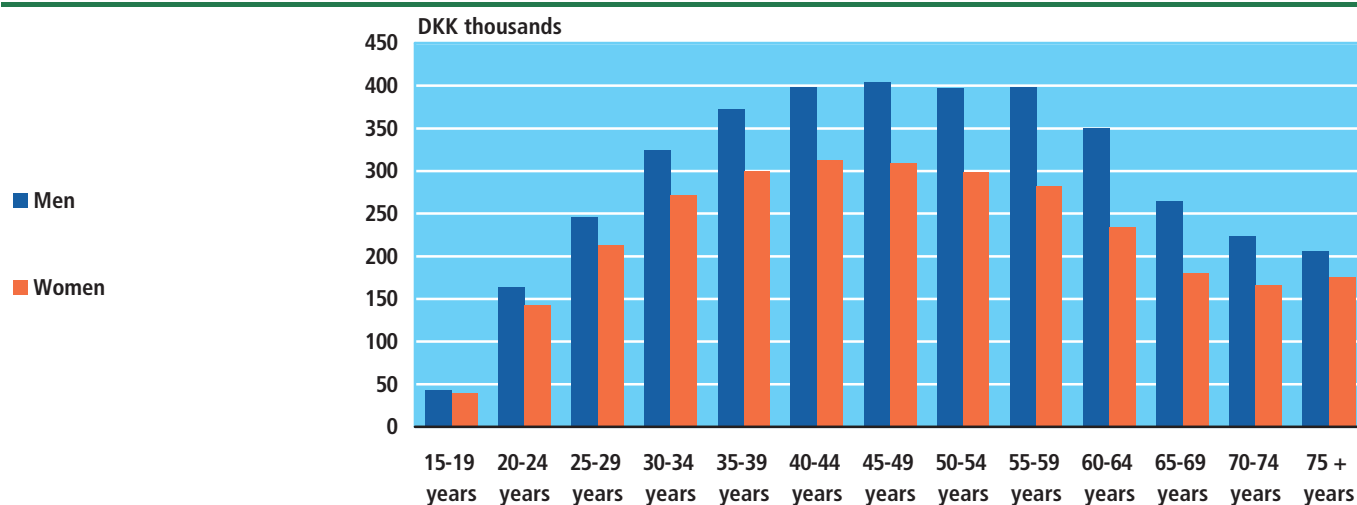
Men earn more than women

In 2007, the average personal income for persons aged 15 and above was DKK 274,100. Men had larger incomes than women as men's average income was DKK 318,200, while that of women was DKK 231,600.

Income, consumption and prices

Figure 2

Average personal income by age group. 2007



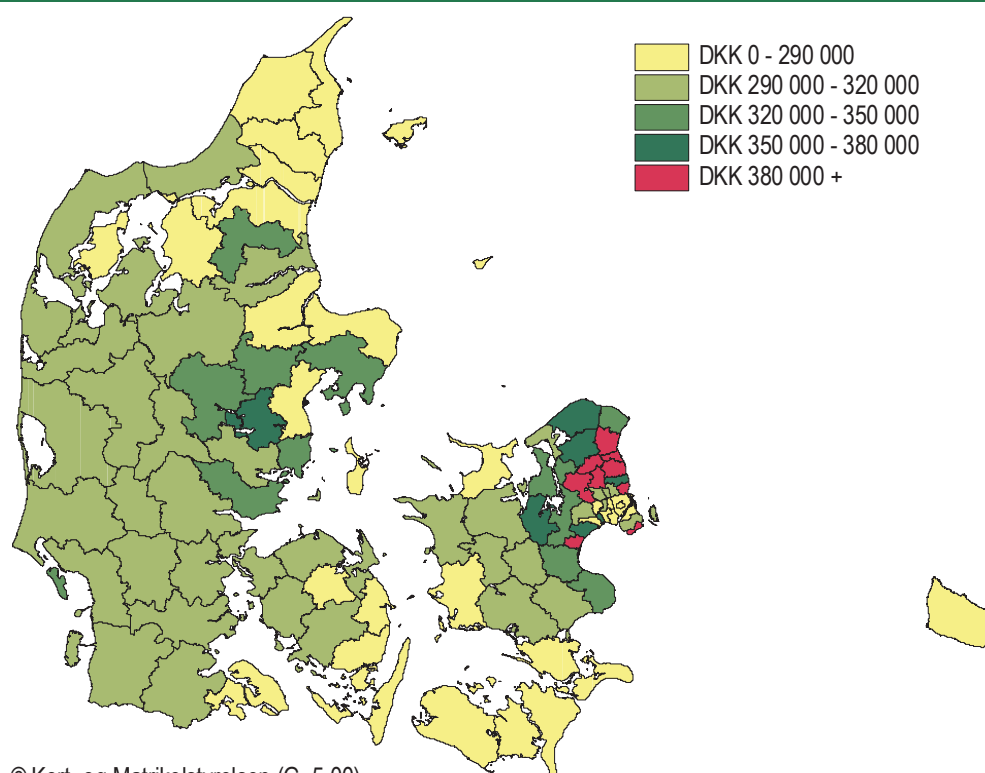
See table 224.

Wealthiest municipalities north of Copenhagen

Average family income after taxes, i.e. the disposable family income, was DKK 298,300 in 2007. The highest average disposable family incomes were recorded in the municipalities north of Copenhagen Municipality. Family income was DKK 513,100 in Hørsholm and DKK 505,500 in Rudersdal. The lowest average family incomes were found in Copenhagen with DKK 227,500 and in Lolland with DKK 247,100.

Figure 3

Average family income in municipalities in DKK. 2007



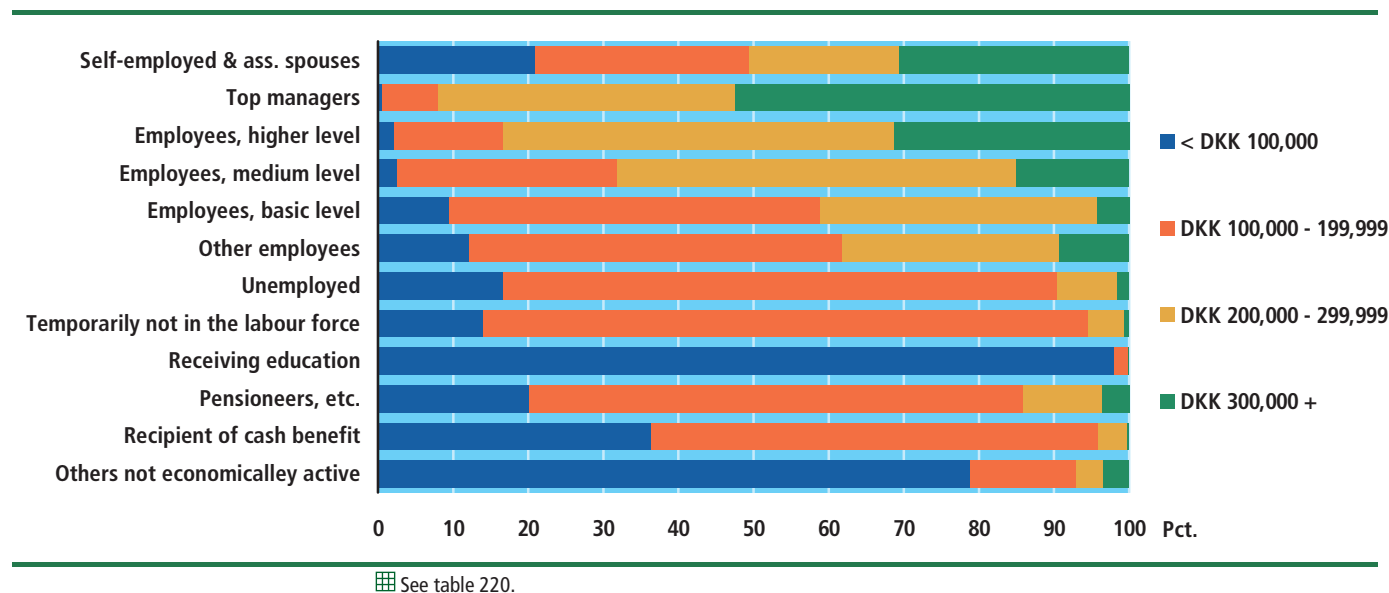
© Kort- og Matrikelstyrelsen (G. 5-00)

Income, consumption and prices

Personal income by socio-economic status

When considering disposable personal incomes as they relate to socio-economic status, it is seen that only 0.6 per cent of all top-level managers (salaried employees at upper levels) made less than DKK 100,000 in 2007. When considering the other end of the scale, 98.1 per cent of all students and 36.3 per cent of all recipients of cash benefits had incomes of less than DKK 100,000.

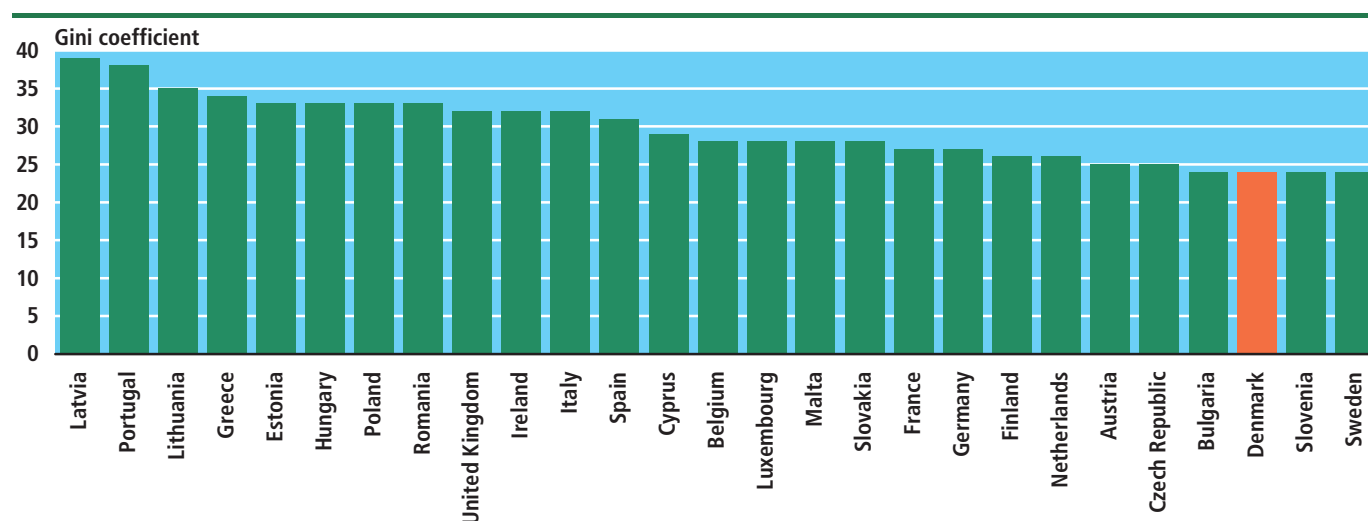
Figure 4 Distribution of disposable personal income by socio-economic groups. 2007



Denmark accounts for the greatest even income distribution

The Gini coefficient is used for measuring the way in which income in a society is distributed. The Gini coefficient shows the share of total incomes that has to be redistributed in order to achieve complete evenness. The more uneven the distribution, the greater the Gini coefficient is in the country.

Figure 5 Gini coefficients in EU27. 2007



Source: Eurostat.

Income, consumption and prices

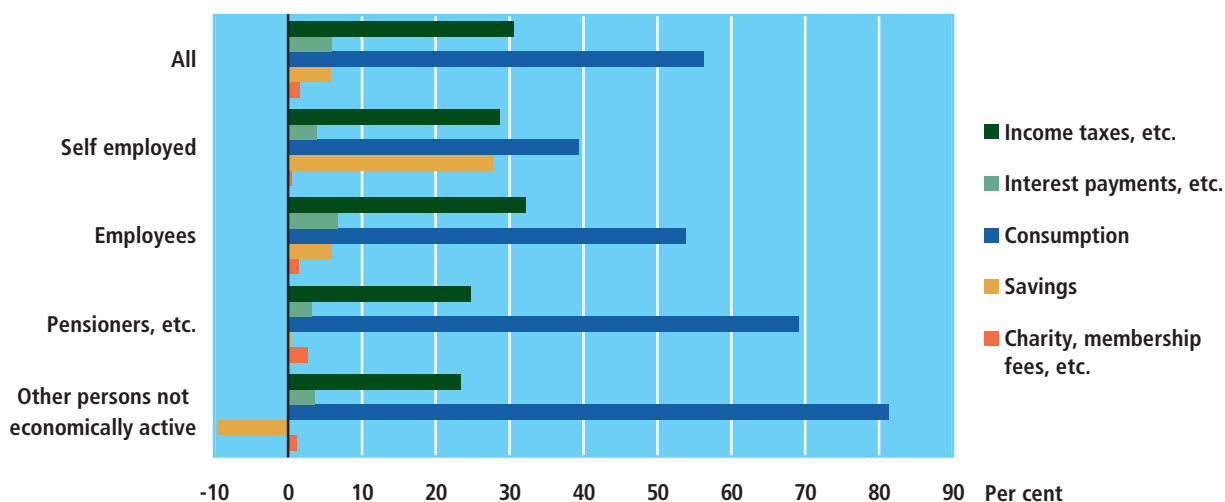
If the value of the Gini coefficient is 0, incomes are completely evenly distributed – i.e. everybody has exactly the same income. However, if the value is 100, incomes are completely unevenly distributed, i.e. one person accounts for all income in the country. The figures show that Denmark, Slovenia and Sweden account for the most evenly distributed income in Europe, while the most uneven income distribution is accounted for by Latvia and Portugal.

2. How is income spent?

The main part is spent on consumption

The household budget survey carried out by Statistics Denmark, which involves a study of private household finances, makes it possible to see how total household income is spent. According to the somewhat wider concept of income in the household budget survey, an average household had a total income of DKK 524,481 in 2006. However, a large part of this income was not at disposal of the household due to income tax, etc., and any interest payable on household debts (including mortgages) – DKK 190,660. The amount left to average households was DKK 333,821. The main part of this amount was spent on consumption – DKK 295,286 – while DKK 30,096 was used for savings (including pension savings and savings tied up in real property). The remaining DKK 8,439 was spent on membership fees, gifts, and charity.

Figure 6 How income is spent in selected households – per cent of total income. 2006



Self-employed and employee households accounted for the highest income taxes

In 2006, self-employed and employee households constituted the groups where income taxes, etc. accounted for the largest percentage of the total income.

Pensioner households and other households made up of persons not economically active (social security recipients, students, etc.) were characterized by spending a considerably greater percentage of their income on consumption than self-

Income, consumption and prices

employed and employee households. Pensioners were also characterized by having the lowest savings.

Great differences in households

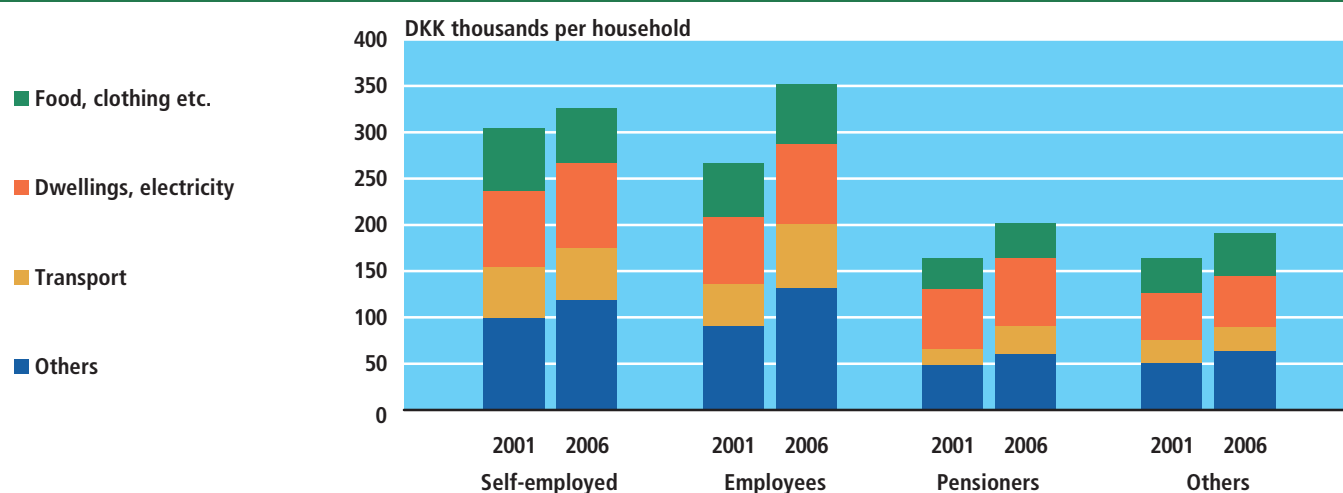
When assessing these differences, it should be noted that households vary greatly in nature. Households in which the main breadwinner is an employee or self-employed are significantly larger than other households. These types of households are home to 2.5 and 2.2 persons per household on average, respectively, whereas the corresponding figure for pensioners' households is 1.5 persons and for other households 2.1 persons per household. Total income is significantly lower in households not economically active: The average income of pensioners' households is DKK 291,542, while that of households with other persons not economically active is DKK 234,997.

Employee households have the highest increase in consumer spending

From 2001 to 2006, employee households have accounted for the greatest increase in consumer spending (32 per cent), followed by pensioners (22 per cent) and households not economically active (17 per cent), while the consumer spending of the self-employed has increased by 7 per cent. The varying developments for the different groups can largely be attributed to the varying developments of the groups as a whole and to a lesser extent to the possible changes in the composition of each group. The statistical data are compiled at current prices, implying that inflation is not taken into account.

Figure 7

Change in consumer spending from 2001 to 2006



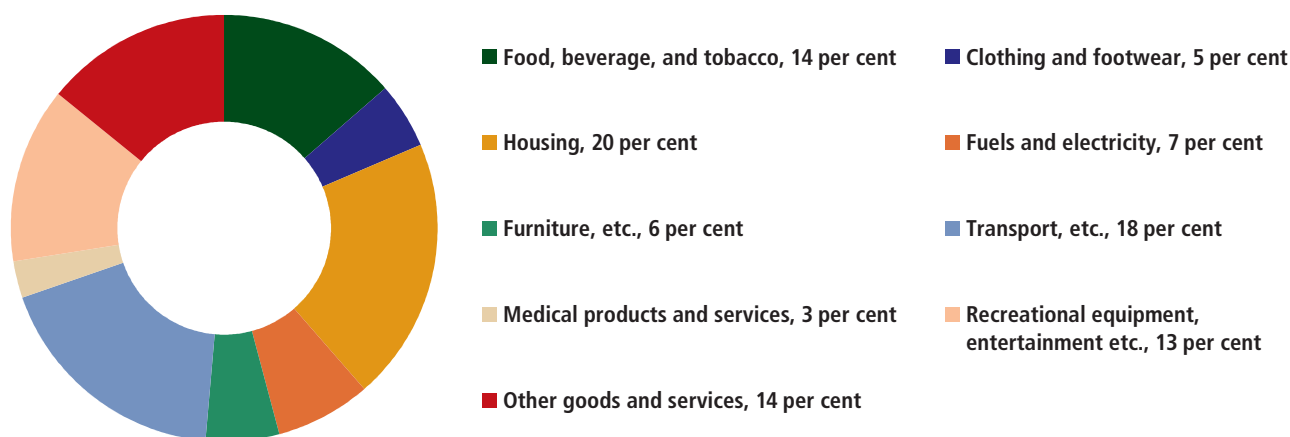
Most money was spent on housing

Housing constituted the largest single consumption item as housing consumption accounted for 20 per cent of total consumption in 2006, i.e. rent in rented accommodation and imputed rent in owner-occupied housing, plus maintenance, etc., not including an additional 7 per cent for heating and electricity. 18 per cent was spent on transport, etc., while food, beverages, and tobacco accounted for 14 per cent, the same as the item other goods and services, which includes expenditure on education and child care, restaurants and hotels, various services, insurance, etc.

Income, consumption and prices

Recreational equipment and entertainment accounted for 13 per cent, while clothing and footwear accounted for only 5 per cent.

Figure 8 Consumption by goods/services. 2006

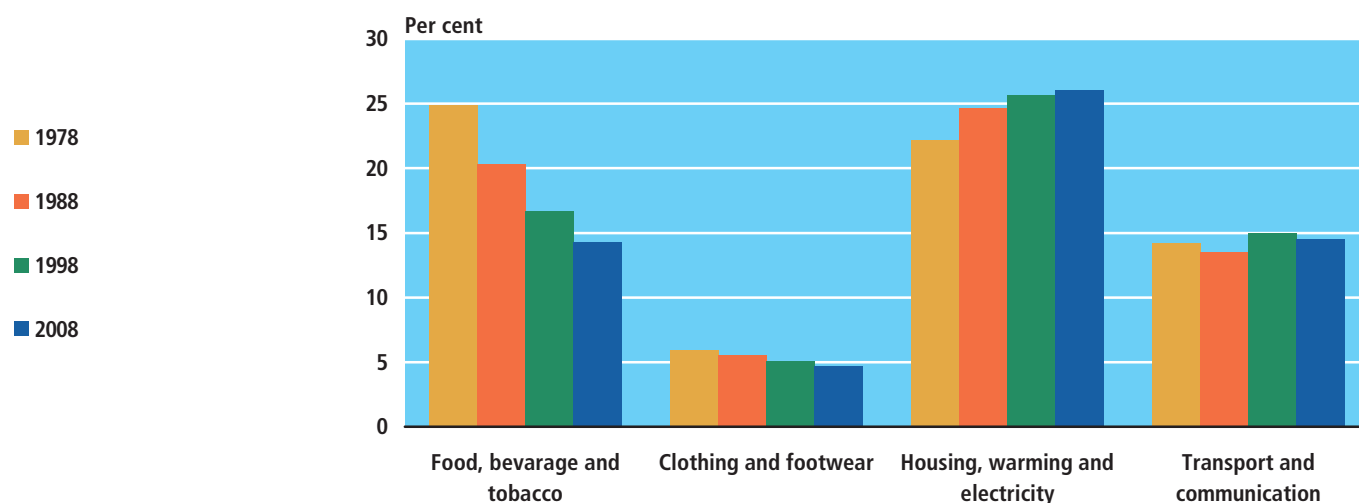


For further information visit www.statbank.dk/fu5.

Danes spend less on food and more on housing

The composition of consumption has undergone major changes over a long period of time. Since 1978, the consumption of food, beverages and tobacco has fallen from 25 per cent of the total consumption of private households to 14 per cent in 2008. Conversely, expenditure on housing, heating, and electricity has increased from 22 per cent in 1978 to 26 per cent in 2008. The consumption of clothing and footwear has fallen from 6 per cent in 1978 to 4.6 per cent in 2008, while expenditure on transport and communications is relatively unchanged.

Figure 9 The share of selected consumption items of total consumption



For further information visit www.statbank.dk/nat05.

Income, consumption and prices

The consumption of beer, wine and spirits was unchanged in 2007

The average consumption of pure alcohol per citizen over 14 years was 12.1 litres in 2007 – the same as the year before. But the consumption of alcohol was strikingly less than in 2003, the year where the largest consumption has been calculated. In 2003, the consumption of pure alcohol was one litre more than in 2003.

While the quantity of pure alcohol per citizen over 14 years was unchanged between 2006 and 2007, the composition of the consumption was changed. The consumption of beer decreased from 554 million litres to 542 million litres. The consumption of wine increased from 172 million litres to 178 million litres and spirits and alcopops increased from 30 to 32 million litres in 2007.

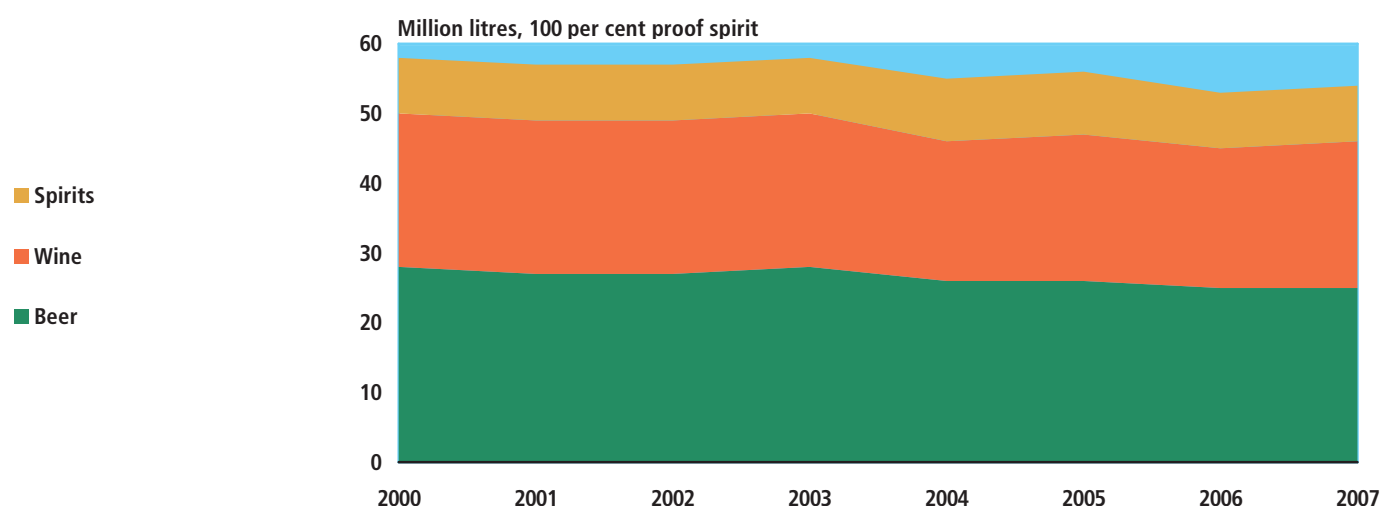
2003 was the year where the Danes had the highest consumption of beer, wine, spirits etc. in the period where the consumption has been calculated.

The Danes drank 10 percent less in 2007 compared with the time when the consumption of beer was 601 million litres. Almost the same change occurred for spirits and alcopops. In 2007 the Danes drank 9 per cent less.

In comparison, the decrease for wine has only been on 2 per cent in the same period.

Figure 10

Total consumption of dutiable alcohol



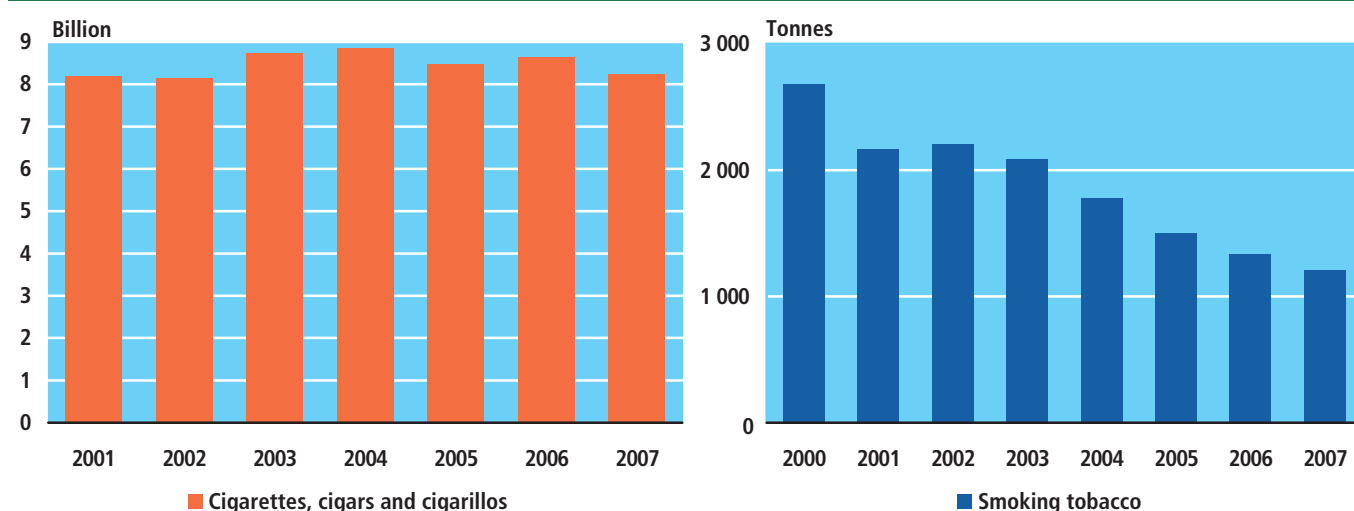
For further information visit www.statbank.dk/alko4.

Average cigarette consumption per citizen over 14 years fell in 2007

Total consumption of cigarettes, cigarillos and cigars decreased 4.8 per cent in 2007 compared to last year, due to decreased domestic sales. The average cigarette consumption per citizen over 14 years was 1,832 units. In 2006 the average consumption was 1,924 units.

Income, consumption and prices

Figure 11 Consumption of tobacco



For further information visit www.statbank.dk/alko4.

3. Households and the public sector

Indirect subsidies from the public sector

The household budget survey also calculates the value of the indirect public subsidies that households may be said to receive insofar as they utilize free or cost-reduced services in healthcare, education, and childcare. On the other hand, part of all household consumption actually constitutes payments to the public sector insofar as such consumption is liable to VAT or other taxes/duties. The net result of such transfers back and forth between individual households and the public sector can be calculated as shown below.

Household transfers to and from the public sector. 2006

	Age group					
	All	17-29	30-49	50-59	60-66	67 +
	DKK thousands					
Transfers to the public sector	230	148	295	291	209	122
Income taxes, etc.	160	95	211	209	137	79
VAT, duties, property taxes, etc.	70	53	84	82	72	43
Transfers from the public sector	146	134	155	87	148	190
Transfer income	81	58	61	54	122	136
Selected indirect transfers	65	76	94	33	26	53
Net transfers to the public sector	84	14	140	204	61	-68
Average household income	524	328	675	656	467	293

Income, consumption and prices

Here, households are divided into categories according to the age of the main breadwinner. When assessing these statistics, it should be noted that households in the younger as well as the older categories are relatively small, whereas households in the 30-59 age group are larger, usually comprising two economically active adults.

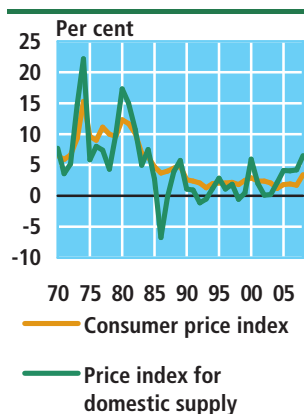
Income taxes, etc., also include subscriptions to unemployment insurance funds. Income transfers comprise a number of transfer incomes, including old-age pensions, cash benefits, sickness benefits, unemployment benefits, housing/rent benefits, and family allowances. As mentioned above, *selected indirect transfers* include the most important services offered in healthcare, education, and childcare; subsidies for medical products have not, however, been included for practical reasons.

Net transfers to the public sector increase with age

It is clear that net transfers from households to the public sector increase with age until the age of 60. From this age onwards, it becomes common to receive early retirement benefits and old-age pension benefits, so for the oldest age group public transfers to households exceed the transfers made from households to the public sector in the form of taxes and duties.

4. Prices

Figure 12
Annual changes in price indices



For further information visit www.statbank.dk/pris9 and [pris10](http://www.statbank.dk/pris10).

Consumer price index and price index for domestic supply

The consumer price index shows the trend of the prices typically charged to consumers for goods and services. Real prices, including VAT and duties charged to consumers, are used for estimating price trends. The trend in the consumer price index reflects a country's rate of inflation, whereas the price trend in the first chain of turnover is reflected by the price index for domestic supply. Importers' real purchase prices, excluding VAT and duties, as well as producers' real sales prices, excluding VAT and duties, are used as the basis for estimating the price index for domestic supply.

Greater fluctuation in the price index for domestic supply

Generally, the price index for domestic supply fluctuates more than the consumer price index. This is mainly due to the fact that the price index for domestic supply includes a number of raw materials for which there are relatively great price fluctuations, and which are not comprised by the consumer price index.

Inflation peaked in 1974

In 1974, inflation peaked with an annual change in the consumer price index of approximately 15 per cent and a change in the price index for domestic supply of approximately 22 per cent. In 1980, the annual change in the consumer price index was approximately 12 per cent, while the corresponding figure for the price index for domestic supply was approximately 17 per cent. The huge oil price increases during these periods affected the price index for domestic supply to a greater degree than the other indices due to the greater weight of fuels. The repeated devaluation of the Danish krone at the end of the 1970s was also instrumental in increasing import prices, which also have greater weight in the price index for domestic supply.

Income, consumption and prices

There was a fall in the price index for domestic supply in 1986-1987, 1992-1993 and 1998, while the consumer price index has increased during the entire period since 1970, which has resulted in higher prices charged to consumers.

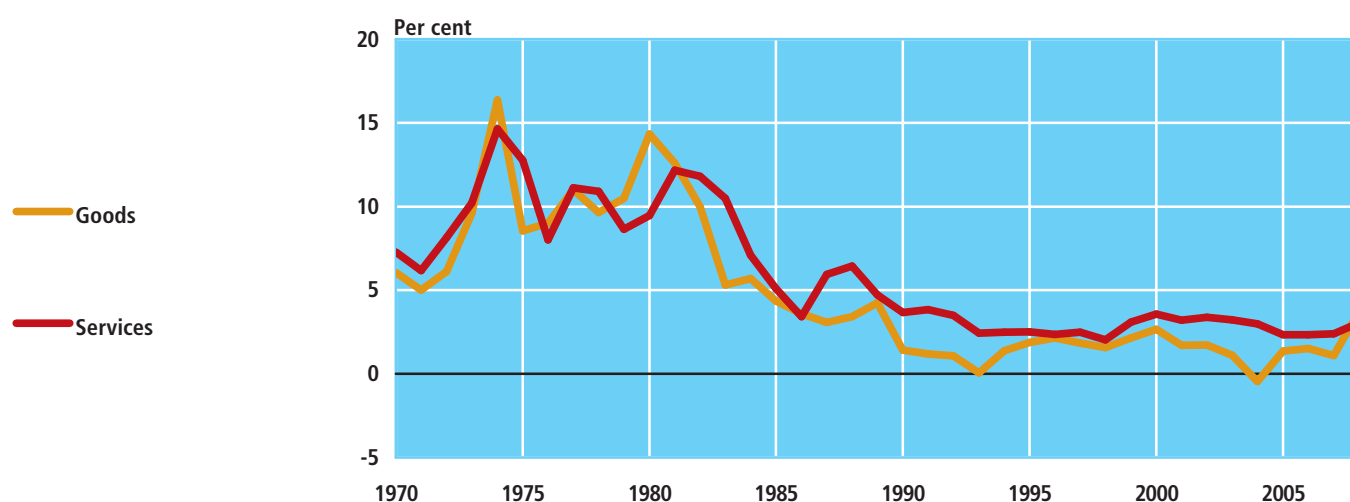
Sub-indices for goods and services

Figure 13 illustrates the annual changes in the consumer price index by goods and services. Similar to the overall consumer price index, these indices reflect the high levels of inflation from the early 1970s to the early 1980s. The increases in the services index were greater than those in the goods index during the periods before and after the oil crises.

Since the end of the 1980s, the services index has been higher than the goods index. This may be partly attributed to the fact that the services index to a greater extent than the goods index is influenced by developments in wages and salaries.

Figure 13

Annual changes in price indices



For further information visit www.statbank.dk/pris6.

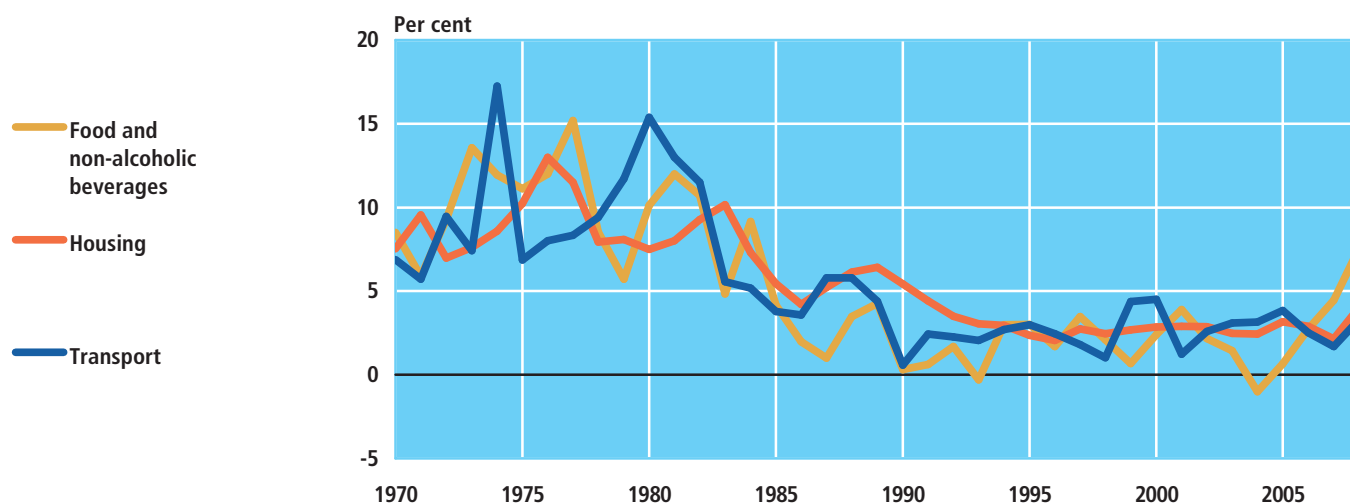
The housing index, the food index, and the transport index

Figure 14 shows the annual changes in three of the sub-indices of the consumer price index: The housing index, the food index, and the transport index. Generally, these sub-indices show the same overall trend as the consumer price index, i.e. greatest change during the period around the two oil crises. From 2002 to 2006, the growth rate on food prices has been lower than that of housing and transport. In 2004, food prices were decreasing, while they in the following years have increased more and more. In 2008, the food prices increased somewhat more than the prices for housing and transport. The price development of transport and housing has remained steady in the period from 2002 until 2008.

Income, consumption and prices

Figure 14

Annual changes in selected sub-indices



For further information visit www.statbank.dk/pris6.

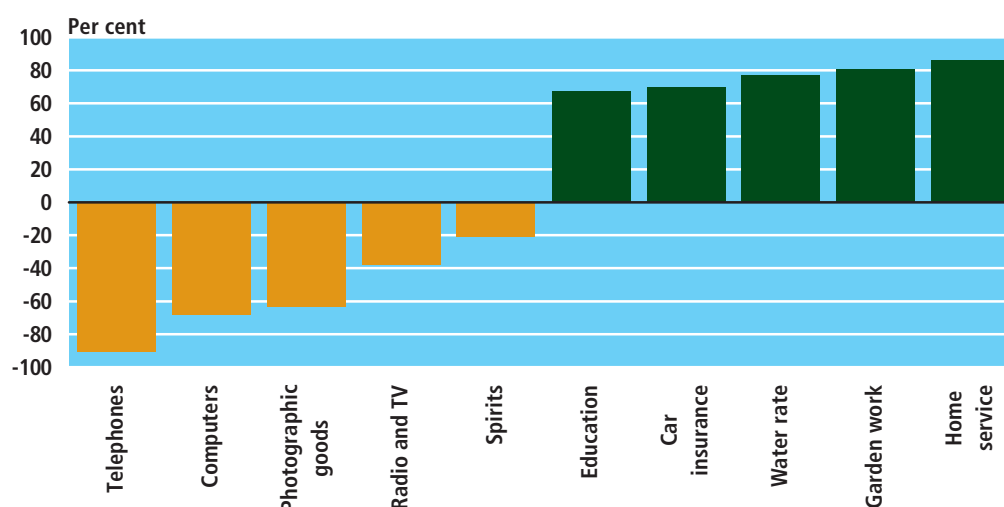
Greatest changes in consumer prices since 2000

Figure 15 shows the commodity and service groups that account for the greatest falls or increases in prices from January 2000 to January 2009. During the period, there was a fall of 91 per cent for telephones. Especially, mobile phones have been instrumental in reducing prices.

There is also a sharp fall in computers (-68 per cent) and photographic equipment (-63 per cent). During the period, radio and TV accounts for a fall of 38 per cent, while there was a fall in prices for spirits of 21 per cent, mainly due to a reduction in duties in October 2003.

Figure 15

Percentage change in consumer prices. Jan. 2000 – Jan. 2009



Income, consumption and prices

Education increased by 67 per cent, due to, among other things, a reduction in subsidies allocated to evening schools. Car insurance has increased by 70 per cent since 2000. During the period, water rates increased by 77 per cent, and garden work, etc. has increased by 81 per cent and home service (e.g. cleaning activities and window cleaning) has increased by 86 per cent. The increase for the last two service groups is mainly due to the abolition of subsidies allocated to home service.

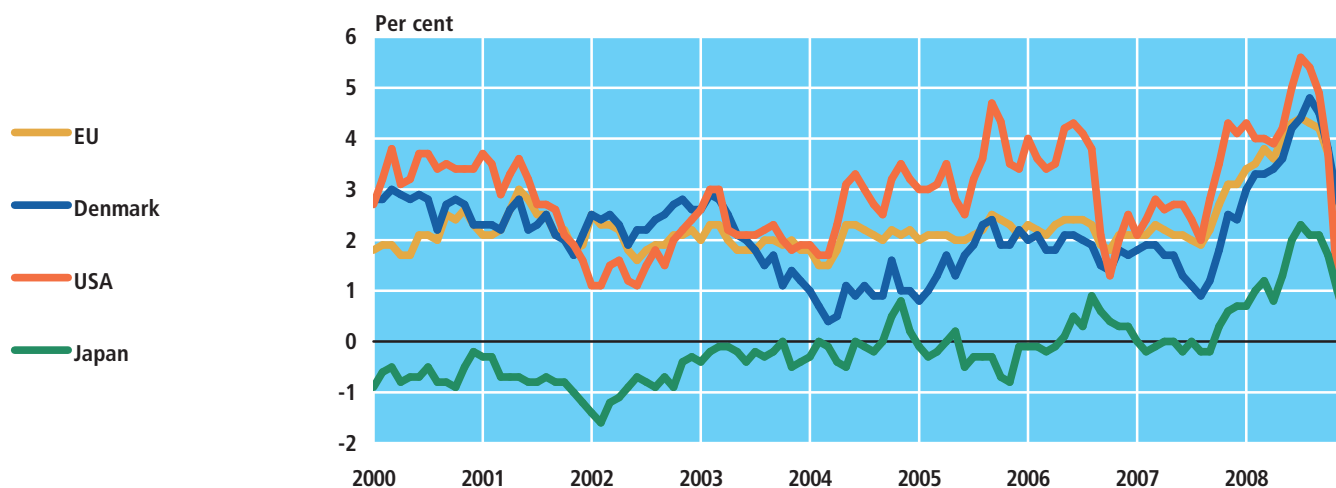
Generally speaking, goods with a highly technological content account for the highest falls in prices since 2000, while services account for the highest increases.

International comparison of price trends

Until the middle of 2001, inflation in the EU and the United States ranged around 2 per cent and 4 per cent. From 2001 onwards, inflation has ranged at a lower level, between 1 per cent and 4 per cent. Since the beginning of 2004 and until the middle of 2006, inflation has been somewhat higher in the United States, compared to the EU, while Denmark has, on average, accounted for a considerably lower rate of inflation than in the EU. In the second half of 2007, the inflation in the United States, the EU, Denmark and Japan rose considerably. This increase in inflation is mainly due to globally rising food and energy prices and has decreased in the last months of 2008.

Figure 16

Inflation in EU, Denmark, United States and Japan



5. Price trends for sales of property

Stagnating and falling prices replace sharp growth in dwellings

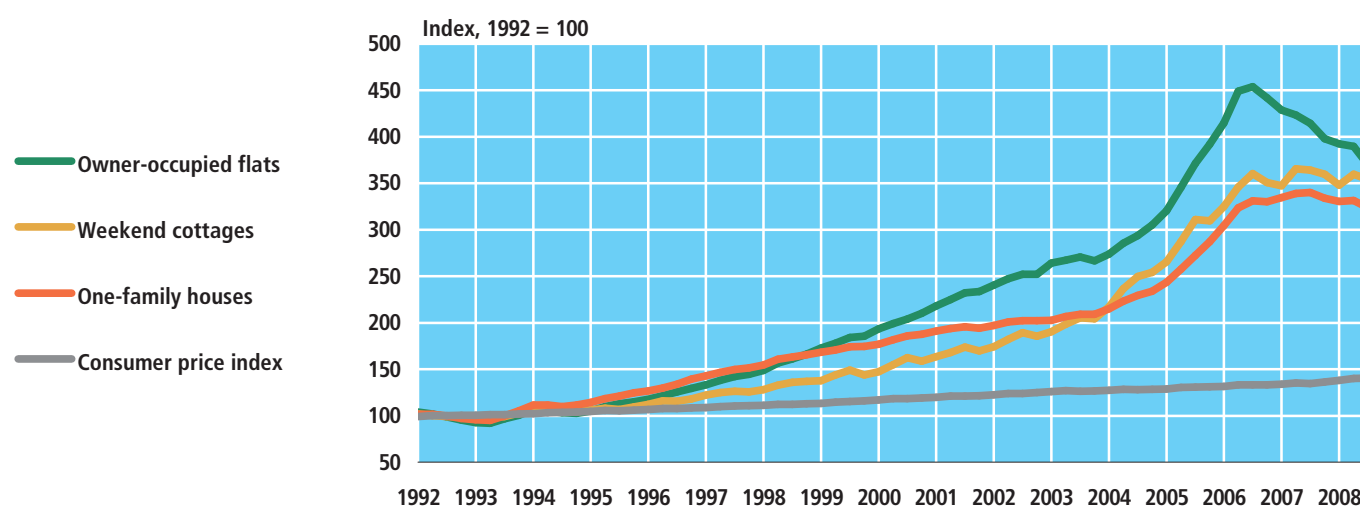
In the middle of the 1990s, prices for owner-occupied dwellings started to increase by far more than the usual price trends in society (as indicated by the consumer price index). The increase lasted up until 2006 when the first indications of obvious price falls began to appear.

Income, consumption and prices

From the 3rd quarter 2006 to the 3rd quarter 2008, prices for owner-occupied flats have fallen by 18.5 per cent. In the same period, prices for one-family houses and weekend cottages are stagnating.

Figure 17

Price trends for owner-occupied dwellings



For further information visit www.statbank.dk/ejen5 and pris12.

Table 215

Income, total. 2007

	Number of families	Lower quartile	Median	Upper quartile	Average
	thousands	DKK thousands			
Families, total	2 741.5	197.5	335.5	590.3	443.2
Without children	1 989.1	172.9	265.7	430.4	352.6
With 1 child	304.1	363.0	562.9	741.6	612.1
With 2 children	323.6	504.4	661.2	834.1	723.0
With 3 or more children	124.7	489.4	666.5	854.3	750.5
Couples, total	1 323.9	396.0	582.6	757.1	646.3
Without children	731.7	309.6	469.6	645.4	545.5
With 1 child	210.9	528.5	656.6	816.0	730.1
With 2 children	271.9	581.3	704.0	873.6	789.4
With 3 or more children	109.3	559.6	702.0	887.6	803.6
Single persons, total	1 417.6	156.2	211.6	311.8	253.5
Without children	1 257.4	150.9	195.8	293.1	240.3
With 1 child	93.2	235.4	313.5	404.6	345.0
With 2 or more children	67.0	272.2	339.7	423.2	373.6

For further information visit www.statbank.dk/06

Table 216

Income, total by family type and level of income. 2007

	Families total			Singles				Couples				
	Total	Without children	With children	Total	Without children	With 1 child	With 2 or more children	Total	Without children	With 1 child	With 2 children	With 3 or more children
	thousands											
Number of families	2 741.5	1 989.1	752.4	1 417.6	1 257.4	93.2	67.0	1 323.9	731.7	210.9	271.9	109.3
Income, total												
Under 50 000 DKK	57.8	54.8	3.0	53.8	52.5	0.9	0.4	4.0	2.3	0.6	0.7	0.4
50 000 - 99 999 DKK	70.5	68.4	2.1	67.9	66.6	0.9	0.4	2.7	1.8	0.3	0.3	0.2
100 000 - 149 999 DKK	198.9	195.0	3.9	192.6	189.8	2.2	0.7	6.2	5.2	0.5	0.4	0.2
150 000 - 199 999 DKK	371.7	358.7	13.0	347.3	336.6	8.5	2.2	24.4	22.0	1.2	0.8	0.3
200 000 - 249 999 DKK	277.4	250.2	27.2	197.5	174.6	15.0	8.0	79.9	75.6	2.0	1.5	0.8
250 000 - 299 999 DKK	238.8	204.7	34.0	167.6	140.9	14.9	11.9	71.1	63.9	3.7	2.3	1.3
300 000 - 349 999 DKK	212.3	172.4	39.9	136.6	109.0	15.1	12.4	75.7	63.4	5.2	4.1	3.0
350 000 - 399 999 DKK	165.9	127.3	38.6	92.9	70.7	11.6	10.6	73.0	56.5	7.0	5.6	3.9
400 000 - 449 999 DKK	131.3	94.7	36.6	55.7	40.6	7.9	7.1	75.6	54.1	9.6	7.7	4.2
450 000 - 499 999 DKK	116.8	77.6	39.2	33.6	24.0	5.3	4.3	83.2	53.6	13.2	11.4	5.0
500 000 - 599 999 DKK	237.8	131.0	106.8	33.9	23.6	5.6	4.7	203.9	107.4	38.1	43.1	15.3
600 000 - 699 999 DKK	217.2	95.8	121.5	15.3	10.7	2.5	2.1	201.9	85.1	41.1	55.9	19.7
700 000 - 799 999 DKK	154.5	58.0	96.5	7.4	5.4	1.1	0.9	147.1	52.6	31.4	46.0	17.1
800 000 - 899 999 DKK	98.1	33.3	64.8	4.3	3.3	0.6	0.5	93.8	30.0	20.6	31.3	11.9
900 000 - 999 999 DKK	59.3	19.0	40.3	2.6	2.1	0.3	0.3	56.7	17.0	12.3	19.8	7.7
1 000 000 - 1 999 999 DKK	115.3	39.4	75.9	6.4	5.2	0.7	0.5	108.9	34.2	21.5	37.0	16.2
2 000 000 - 2 999 999 DKK	10.1	4.6	5.6	1.0	0.9	0.1	0.1	9.1	3.7	1.5	2.6	1.3
3 mio DKK +	7.7	4.3	3.5	1.1	1.0	0.1	0.0	6.7	3.3	1.0	1.6	0.8

For further information visit www.statbank.dk/06

Table 217

Family incomings by type of dwelling. 2007

	Type of dwelling					Type of ownership		
	Detached	Terraced or semi- detached	Apartment houses	Student hostels	Other dwellings ¹	Total	Own dwelling	Rented ²
DKK thousands								
Income, total								
Families, total	584.4	390.8	315.1	118.4	338.9	443.2	603.2	295.7
Without children	462.5	322.8	282.3	115.5	276.0	352.6	488.9	257.3
With 1 child	724.2	544.1	448.4	247.0	624.4	612.1	740.4	433.1
With 2 children	793.5	630.9	514.6	314.7	738.1	723.0	806.2	507.5
With 3 or more children	836.4	624.7	494.5	363.2	819.4	750.5	857.1	514.4
Couples, total	700.4	581.7	515.1	233.9	660.7	646.3	706.0	495.9
Without children	589.4	491.3	468.3	222.2	567.6	545.5	598.6	434.9
With 1 child	778.0	697.0	597.8	295.2	761.9	730.1	787.5	580.2
With 2 children	822.1	747.0	627.7	369.5	816.4	789.4	828.6	627.7
With 3 or more children	861.5	712.5	560.9	404.0	888.4	803.6	873.7	590.3
Singles, total	297.5	256.5	242.2	106.4	203.9	253.5	337.7	224.1
Without children	279.7	237.5	233.1	105.7	196.6	240.3	321.6	212.1
With 1 child	412.9	347.0	311.6	189.8	337.8	345.0	449.1	307.5
With 2 or more children	425.6	373.3	337.3	198.6	367.0	373.6	473.4	336.3
All income including net interest recieved								
Families, total	591.0	395.1	311.0	116.9	330.0	444.8	614.5	288.4
Without children	483.5	330.4	279.8	114.1	275.5	360.4	514.9	252.3
With 1 child	712.2	538.5	436.5	241.7	584.6	600.5	732.0	416.9
With 2 children	781.6	626.9	502.0	306.4	676.0	711.1	797.4	487.4
With 3 or more children	801.7	618.5	483.1	351.5	728.9	721.8	825.2	492.5
Couples, total	704.1	587.5	506.8	230.9	631.0	647.0	713.0	480.6
Without children	613.6	504.0	463.9	219.6	563.5	560.5	625.2	425.6
With 1 child	764.3	690.7	581.6	289.6	709.0	716.0	777.0	556.7
With 2 children	809.3	743.6	612.2	361.0	744.9	776.1	818.7	600.5
With 3 or more children	825.2	706.5	547.7	391.1	786.1	771.9	840.5	562.8
Singles, total	311.5	259.9	239.5	105.1	203.7	256.1	360.3	219.6
Without children	296.0	242.4	231.0	104.4	197.1	243.9	346.5	208.3
With 1 child	410.4	342.4	303.6	184.7	325.1	339.0	453.8	297.7
With 2 or more children	423.8	367.6	329.5	190.7	350.6	367.9	478.3	326.7
Disposable income								
Families, total	393.6	268.6	209.8	85.5	226.4	298.3	408.8	196.5
Without children	329.0	228.4	188.6	83.4	191.6	245.2	349.5	172.3
With 1 child	463.8	354.3	290.5	178.8	385.8	393.6	475.9	278.7
With 2 children	506.3	412.4	338.8	223.3	444.2	464.0	515.9	329.5
With 3 or more children	530.4	420.6	345.3	255.5	496.1	483.8	544.1	350.3
Couples, total	466.8	391.0	336.4	166.1	424.9	429.4	472.2	321.2
Without children	417.0	343.8	309.5	158.3	386.4	379.8	424.2	287.3
With 1 child	496.6	446.2	377.3	208.4	463.8	464.8	504.1	362.3
With 2 children	522.6	478.9	401.2	255.1	486.3	501.9	528.4	392.9
With 3 or more children	543.9	468.2	380.5	276.8	531.0	512.3	552.8	388.8
Singles, total	212.8	182.6	163.6	77.1	143.1	176.0	244.8	151.9
Without children	202.0	169.9	156.6	76.5	138.5	166.9	235.6	143.0
With 1 child	274.0	235.9	211.1	143.7	222.9	232.3	301.6	207.4
With 2 or more children	300.3	268.6	246.2	157.3	249.8	268.2	332.4	244.2

¹ Includes unknown types of dwelling. ² Dwellings which are part of a housing association are included as rented.

For further information visit www.statbank.dk/06

Table 218

Family incomings for families with children. 2007

	Number of families	Age of youngest child						Total
		0-2 years	3-6 years	7-12 years	13-14 years	15-17 years	18-24 years	
	thousands	DKK thousands						
Income, total								
Families, total	752.4	626.7	660.2	694.5	714.7	714.6	759.2	682.8
With 1 child	304.1	575.7	533.2	548.5	580.1	629.3	737.0	612.1
With 2 children	323.6	657.4	693.2	725.2	765.5	822.8	918.4	723.0
With 3 or more children	124.7	670.2	724.2	791.6	935.0	974.3	939.5	750.5
Couples, total	592.2	668.4	746.6	806.6	837.2	842.5	878.2	770.9
With 1 child	210.9	626.1	670.3	729.1	740.9	775.4	858.6	730.1
With 2 children	271.9	690.8	758.5	811.7	850.4	903.6	1 001.6	789.4
With 3 or more children	109.3	706.5	781.3	854.9	1 009.0	1 052.3	1 003.0	803.6
Singles, total	160.2	256.0	312.6	351.5	374.8	393.1	454.6	357.0
With 1 child	93.2	233.3	284.0	321.2	343.2	366.0	443.7	345.0
With 2 or more children	67.0	280.3	336.5	376.8	416.0	469.9	574.7	373.6
All income including net interest recieved								
Families, total	752.4	601.0	641.0	682.4	706.9	707.8	757.0	668.2
With 1 child	304.1	551.4	516.5	538.4	571.7	622.9	735.0	600.5
With 2 children	323.6	635.4	677.7	717.0	761.1	817.2	916.1	711.1
With 3 or more children	124.7	634.5	695.6	767.2	913.0	947.4	907.0	721.8
Couples, total	592.2	640.8	724.9	792.6	828.0	834.8	876.1	753.9
With 1 child	210.9	599.5	649.4	716.4	730.1	768.9	856.9	716.0
With 2 children	271.9	667.6	741.7	802.7	845.5	897.0	998.9	776.1
With 3 or more children	109.3	668.1	749.6	827.9	983.7	1 020.5	963.3	771.9
Singles, total	160.2	247.8	303.8	345.5	371.1	388.4	452.2	351.1
With 1 child	93.2	225.2	275.0	314.5	338.3	359.9	441.1	339.0
With 2 or more children	67.0	272.0	327.9	371.3	413.9	469.0	573.7	367.9
Disposable income								
Families, total	752.4	394.6	419.9	447.0	464.7	467.2	499.7	438.8
With 1 child	304.1	358.3	338.5	351.2	375.2	410.1	484.7	393.6
With 2 children	323.6	415.8	438.6	465.6	499.4	540.6	606.9	464.0
With 3 or more children	124.7	427.0	465.5	514.5	607.6	630.6	622.4	483.8
Couples, total	592.2	418.1	469.0	512.9	539.0	546.5	576.8	490.6
With 1 child	210.9	387.1	417.8	458.5	473.0	501.1	563.6	464.8
With 2 children	271.9	434.6	475.2	515.3	549.6	589.3	659.9	501.9
With 3 or more children	109.3	445.7	495.7	549.6	649.4	674.0	658.3	512.3
Singles, total	160.2	186.3	222.1	245.3	258.8	268.0	302.4	247.3
With 1 child	93.2	162.8	194.5	216.2	231.0	246.2	294.5	232.3
With 2 or more children	67.0	211.5	245.2	269.6	295.1	329.4	389.0	268.2

For further information visit www.statbank.dk/06

Table 219

Gross family income. 2007

	Number of families	1st quartile group	2nd quartile group	3rd quartile group	4th quartile group	Maximum equalization percentage
	thousands	per cent				
Income, total						
Families, total	2 741.5	7.7	14.8	25.5	52.0	29.2
Without children	1 989.1	8.6	15.2	23.8	52.4	28.3
With 1 child	304.1	10.4	19.1	26.4	44.1	20.8
With 2 children	323.6	12.0	20.4	25.6	42.0	18.1
With 3 or more children	124.7	11.5	19.5	25.0	44.0	19.8
Couples	1 323.9	10.7	19.2	25.7	44.4	20.6
Without children	731.7	10.7	17.7	25.4	46.1	22.3
With 1 child	210.9	13.8	20.3	25.0	40.9	16.6
With 2 children	271.9	14.5	20.4	24.7	40.4	16.0
With 3 or more children	109.3	13.0	19.7	24.4	42.9	18.4
Singles, total	1 417.6	10.3	17.7	25.5	46.4	22.9
Without children	1 257.4	10.3	17.9	25.1	46.7	23.0
With 1 child	93.2	13.1	20.0	25.7	41.2	17.4
With 2 or more children	67.0	14.7	20.5	25.3	39.5	15.4
All income including net interest recieved						
Families, total	2 741.5	7.6	15.0	25.6	51.8	28.9
Without children	1 989.1	8.4	15.3	24.0	52.2	28.3
With 1 child	304.1	10.1	18.8	26.5	44.6	21.5
With 2 children	323.6	11.5	20.1	25.8	42.6	18.8
With 3 or more children	124.7	10.8	19.4	25.4	44.3	20.4
Couples	1 323.9	10.9	19.1	25.6	44.3	20.5
Without children	731.7	10.9	18.0	25.3	45.7	21.9
With 1 child	210.9	13.2	20.1	25.2	41.5	17.3
With 2 children	271.9	13.8	20.3	25.0	40.9	16.6
With 3 or more children	109.3	12.1	19.7	24.9	43.3	19.0
Singles, total	1 417.6	10.2	17.9	25.5	46.4	22.9
Without children	1 257.4	10.1	18.0	25.2	46.7	23.0
With 1 child	93.2	12.8	19.7	25.7	41.7	18.0
With 2 or more children	67.0	14.2	20.3	25.3	40.2	16.1
Disposable income						
Families, total	2 741.5	8.4	16.0	26.1	49.5	26.8
Without children	1 989.1	9.2	16.4	24.3	50.1	26.2
With 1 child	304.1	11.1	19.5	26.7	42.7	19.6
With 2 children	323.6	12.8	21.0	26.0	40.3	16.5
With 3 or more children	124.7	12.3	20.3	25.5	41.9	17.8
Couples	1 323.9	12.2	20.0	25.8	42.1	18.3
Without children	731.7	12.3	19.0	25.4	43.3	19.3
With 1 child	210.9	14.1	20.8	25.4	39.8	15.6
With 2 children	271.9	14.8	21.1	25.2	38.9	14.6
With 3 or more children	109.3	13.3	20.6	25.0	41.1	16.8
Singles, total	1 417.6	11.0	19.5	25.8	43.7	20.1
Without children	1 257.4	11.0	19.8	25.6	43.6	19.8
With 1 child	93.2	14.5	20.9	25.7	38.9	14.9
With 2 or more children	67.0	15.7	21.4	25.5	37.4	13.2

For further information visit www.statbank.dk/06

Table 220

Disposable income by sex and socio-economic group. 2007

	Number of persons	Lower quartile	Median	Upper quartile	Average
	thousands	DKK thousands			
Men and women					
Self-employed, total¹	195.0	115.7	202.3	347.0	320.5
Self-employed, with employees	46.6	145.2	272.7	508.7	404.4
Self-employed, without employees	140.2	109.6	191.6	316.1	301.8
Assisting spouses	8.2	119.3	153.4	193.8	162.6
Employees, total	2 437.7	162.2	204.9	253.4	220.5
Top managers, total	73.2	247.0	306.9	405.3	389.6
Employees, highest level, total	333.9	218.5	260.7	318.1	281.0
Employees, medium level, total	481.3	189.8	224.8	269.0	238.2
Employees, basic level, total	986.6	150.4	188.1	224.3	189.4
Other employees	197.5	137.0	170.4	205.6	172.8
Employees, not further specified	365.2	140.8	188.0	243.6	217.8
Unemployed	58.4	111.8	134.0	162.2	141.8
Temporarily outside the labour force	45.3	114.0	130.2	151.7	135.4
Not economically active					
Pensioners and others	1 140.9	107.1	132.8	167.3	149.2
Recipients of cash benefits	87.9	88.0	113.9	143.8	119.9
Other persons not economically active ²	452.3	8.7	25.7	50.7	41.8
Men					
Self-employed, total¹	136.1	122.2	222.0	389.9	355.6
Self-employed with employees	36.2	147.4	284.0	530.3	420.8
Self-employed without employees	99.2	116.7	206.9	346.7	333.5
Assisting spouses	0.8	98.7	132.5	171.2	139.8
Employees, total	1 259.9	171.3	216.6	271.8	238.9
Top managers	52.9	260.6	327.0	437.3	424.1
Employees, highest level, total	175.1	227.9	276.3	340.8	300.9
Employees, medium level, total	183.0	207.8	250.3	304.1	269.3
Employees, basic level, total	502.5	160.3	199.5	236.6	200.3
Other employees	117.1	148.3	183.8	219.4	185.1
Employees, not further specified	229.3	149.6	198.6	258.7	236.7
Unemployed	26.2	103.5	127.7	156.9	138.4
Temporarily outside the labour force	13.9	108.9	124.7	142.4	130.6
Not economically active					
Pensioners and others	484.6	115.3	141.3	184.4	165.3
Recipients of cash benefits	35.4	81.1	97.5	116.2	102.8
Other persons not economically active ²	213.7	7.2	23.1	46.0	40.4
Women					
Self-employed, total¹	58.8	105.2	170.1	263.1	239.2
Self-employed with employees	10.4	139.9	241.9	427.1	347.7
Self-employed without employees	41.0	96.5	163.1	252.3	225.1
Assisting spouses	7.4	123.0	155.7	195.4	164.9
Employees, total	1 177.8	155.0	194.0	236.0	200.8
Top managers	20.4	227.1	266.1	328.8	300.4
Employees, highest level, total	158.8	209.8	247.4	293.8	259.0
Employees, medium level, total	298.3	182.4	213.3	248.5	219.1
Employees, basic level, total	484.1	143.7	177.4	210.6	178.0
Other employees	80.4	125.2	155.3	182.5	154.9
Employees, not further specified	135.9	129.7	171.8	219.6	185.9
Unemployed	32.2	118.3	138.7	165.2	144.6
Temporarily outside the labour force	31.4	116.5	133.5	154.5	137.6
Not economically active					
Pensioners and others	656.3	99.3	127.7	155.8	137.2
Recipients of cash benefits	52.4	101.7	129.1	157.4	131.4
Other persons not economically active ²	238.7	10.1	28.2	54.4	43.1

¹ Includes assisting spouses. ² Includes unknown.

For further information visit www.statbank.dk/06

Table 221

Personal income by type of income. 2007

	Primary income			Transfer income				Property income, net	Disposable income
	Wages and salaries, etc.	Entrepre- neurial income etc.	Total	Unemploy- ment bene- fits etc.	Pensions etc.	Social benefits	Total ³		
	DKK thousands								
Men and women	175.9	18.5	194.4	2.5	43.5	7.4	61.8	16.7	184.3
Self-employed, total ¹	28.6	387.4	416.0	1.5	17.4	7.0	30.2	18.9	320.5
Self-employed with employees	13.7	632.2	645.9	0.2	7.2	6.1	16.4	-64.9	404.4
Self-employed without employees	34.6	320.0	354.6	1.9	20.8	7.3	34.7	46.7	301.8
Assisting spouses	12.2	145.4	157.6	0.5	16.7	5.9	31.6	20.8	162.6
Employees, total	311.4	2.1	313.5	2.0	3.7	3.9	16.8	13.2	220.5
Top managers	588.0	6.7	594.6	0.5	5.6	0.8	9.8	87.6	389.6
Employees, highest level	415.4	4.6	420.0	1.8	4.4	2.7	15.8	20.6	281.0
Employees, medium level	345.7	1.6	347.2	1.4	2.7	3.4	16.0	9.7	238.2
Employees, basic level	264.5	1.1	265.6	2.1	2.2	4.2	15.7	2.9	189.4
Other employees	238.2	0.9	239.1	3.3	3.1	5.6	18.5	1.2	172.8
Employees, not further specified	281.5	3.3	284.8	2.3	8.7	4.9	22.5	30.4	217.8
Unemployed	48.5	3.8	52.3	79.2	4.5	38.1	132.6	4.9	141.8
Temporarily outside the labour force	10.4	-0.3	10.1	27.9	6.8	115.4	165.3	-0.9	135.4
Not economically active									
Pensioners and others	2.3	0.4	2.7	0.1	154.4	1.1	163.9	29.8	149.2
Recipients of cash benefits	6.4	0.1	6.4	0.2	3.0	127.3	149.8	-3.0	119.9
Others persons not economically active ²	12.9	0.3	13.2	0.1	5.6	4.3	23.2	8.3	41.8

¹ Includes assisting spouses. ² Includes unknown. ³ Includes other transfer income.

For further information visit www.statbank.dk/06

Table 222

Disposable income by sex and level of income. 2007

	thousands			per cent		
	Men	Women	Total	Men	Women	Total
Persons, total	2 169.8	2 247.6	4 417.5	49	51	100
Disposable income						
Less than 50 000 DKK	192.0	185.8	377.8	51	49	100
DKK 50 000 – DKK 99 999	214.6	327.6	542.1	40	60	100
DKK 100 000 – DKK 149 999	397.2	553.6	950.8	42	58	100
DKK 150 000 – DKK 199 999	432.1	540.8	973.0	44	56	100
DKK 200 000 – DKK 249 999	402.3	367.2	769.4	52	48	100
DKK 250 000 – DKK 299 999	230.6	157.3	387.9	59	41	100
DKK 300 000 – DKK 349 999	118.4	58.9	177.2	67	33	100
DKK 350 000 – DKK 399 999	62.2	24.4	86.6	72	28	100
DKK 400 000 – DKK 449 999	34.8	11.8	46.6	75	25	100
DKK 450 000 – DKK 499 999	21.4	6.4	27.8	77	23	100
DKK 500 000 – DKK 599 999	23.4	6.0	29.4	80	20	100
DKK 600 000 – DKK 699 999	12.2	2.6	14.8	82	18	100
DKK 700 000 – DKK 799 999	7.1	1.5	8.6	83	17	100
DKK 800 000 – DKK 899 999	4.6	0.9	5.5	84	16	100
DKK 900 000 – DKK 999 999	3.3	0.6	3.8	85	15	100
DKK 1 000 000 – DKK 1 999 999	9.3	1.7	11.0	85	15	100
DKK 2 000 000 – DKK 2 999 999	2.0	0.3	2.4	86	14	100
DKK 3 mio +	2.3	0.4	2.7	87	13	100

For further information visit www.statbank.dk/06

Table 223

Disposable income by sex and socio-economic group. 2007

	Number of persons	1st quartile group	2nd quartile group	3rd quartile group	4th quartile group	Maximum equalization percentage
	thousands	per cent				
Men and women	4 417.5	7.9	18.9	26.6	46.5	23.5
Self-employed, total¹	195.0	-0.8	12.4	20.5	68.0	43.1
Self-employed with employees	46.6	-6.2	12.9	23.0	70.2	46.2
Self-employed without employees	140.2	1.2	12.5	20.3	66.0	41.1
Assisting spouses	8.2	12.6	21.2	26.4	39.8	16.4
Employees, total	2 437.7	13.4	20.9	25.8	40.0	16.1
Top managers	73.2	12.6	17.7	22.4	47.3	22.3
Employees, highest level	333.9	15.3	21.3	25.5	37.9	13.8
Employees, medium level	481.3	16.1	21.8	25.7	36.5	12.4
Employees, basic level	986.6	14.5	22.5	27.1	35.9	13.0
Other employees	197.5	14.4	22.4	27.0	36.1	13.2
Employees, not further specified	365.2	10.8	19.0	24.5	45.8	21.3
Unemployed	58.4	14.8	21.8	25.9	37.6	13.7
Temporarily not in the labour force	45.3	16.8	22.6	25.8	34.7	10.7
Not in the labour force						
Pensioners and others	1 140.9	14.0	20.2	24.7	41.1	16.6
Recipient of cash benefit	87.9	15.3	21.1	26.7	37.0	13.8
Others not in the labour force ²	452.3	-0.3	10.0	22.1	68.2	44.0
Men	2 169.8	7.0	18.3	26.0	48.7	25.2
Self-employed, total¹	136.1	-1.8	12.0	20.5	69.2	44.4
Self-employed with employees	36.2	-7.5	12.8	23.2	71.5	47.5
Self-employed without employees	99.2	0.9	12.1	20.0	67.0	42.1
Assisting spouses	0.8	11.7	21.2	26.6	40.5	17.4
Employees, total	1 259.9	12.7	20.4	25.3	41.7	17.5
Top managers	52.9	11.9	17.3	22.1	48.8	23.8
Employees, highest level	175.1	14.9	20.9	25.4	38.8	14.6
Employees, medium level	183.0	15.3	21.3	25.5	37.9	13.8
Employees, basic level	502.5	14.2	22.7	27.1	36.0	13.1
Other employees	117.1	14.5	22.6	27.1	35.9	13.0
Employees, not further specified	229.3	10.3	18.5	23.8	47.4	22.8
Unemployed	26.2	13.6	21.1	25.4	39.9	15.7
Temporarily not in the labour force	13.9	15.9	22.6	25.2	36.3	11.8
Not in the labour force						
Pensioners and others	484.6	14.1	19.4	24.2	42.3	17.8
Recipient of cash benefit	35.4	16.7	21.6	25.6	36.1	11.9
Others not in the labour force ²	213.7	-1.3	9.3	20.8	71.3	46.6
Women	2 247.6	9.1	20.2	27.7	43.0	20.8
Self-employed, total¹	58.8	2.5	14.5	22.0	61.0	36.2
Self-employed with employees	10.4	-0.7	13.7	22.9	64.2	40.0
Self-employed without employees	41.0	2.7	14.5	22.6	60.3	35.6
Assisting spouses	7.4	12.8	21.2	26.4	39.6	16.2
Employees, total	1 177.8	14.4	21.8	26.6	37.2	13.9
Top managers	20.4	16.0	20.5	24.4	39.1	14.5
Employees, highest level	158.8	15.9	22.1	25.9	36.0	12.1
Employees, medium level	298.3	17.0	22.6	26.2	34.2	10.5
Employees, basic level	484.1	15.0	22.7	27.1	35.2	12.3
Other employees	80.4	14.9	22.9	27.1	35.0	12.2
Employees not further specified	135.9	12.2	20.4	26.1	41.3	17.7
Unemployed	32.2	15.9	22.3	26.1	35.7	11.9
Temporarily not in the labour force	31.4	17.3	22.8	26.0	33.9	10.0
Not in the labour force						
Pensioners and others	656.3	14.2	21.0	25.5	39.4	15.2
Recipient of cash benefit	52.4	15.2	22.2	27.1	35.5	12.7
Others not in the labour force ²	238.7	0.6	10.7	23.4	65.3	41.6

¹ Includes assisting spouses. ² Includes unknown.For further information visit www.statbank.dk/06

Table 224

Disposable income by sex and age. 2007

	Number of persons	Lower quartile	Median	Upper quartile	Average
	thousands	DKK thousands			
Men and women					
Total	4 417.5	112.0	167.4	227.3	184.3
15-19 years	330.7	11.0	24.8	48.1	34.0
20-24 years	289.9	71.0	99.1	136.6	106.4
25-29 years	308.5	103.7	153.8	192.3	150.2
30-34 years	360.8	149.4	189.2	227.9	191.8
35-39 years	382.4	163.9	205.6	251.8	216.8
40-44 years	425.8	167.3	212.1	262.8	230.9
45-49 years	377.3	163.8	210.5	264.0	234.3
50-54 years	361.5	159.0	207.8	263.2	232.8
55-59 years	354.4	153.0	204.0	263.7	234.7
60-64 years	373.7	126.4	172.4	242.8	214.5
65-69 years	266.1	101.4	137.1	196.9	178.3
70-74 years	203.9	96.2	128.9	175.3	160.3
74 years +	382.4	107.1	131.4	165.2	154.6
Men					
Total	2 169.8	118.3	183.5	248.3	206.1
15-19 years	170.0	11.1	25.0	50.6	35.6
20-24 years	148.0	72.0	105.3	151.5	113.7
25-29 years	154.7	107.5	164.7	204.9	159.0
30-34 years	180.6	153.3	198.8	241.5	202.3
35-39 years	193.2	167.7	214.8	268.1	230.3
40-44 years	216.0	171.7	221.3	282.3	249.2
45-49 years	190.7	172.5	223.8	287.6	258.4
50-54 years	181.7	172.5	225.7	289.8	261.5
55-59 years	176.9	172.1	228.1	295.3	272.2
60-64 years	186.2	144.5	202.7	281.1	256.5
65-69 years	129.7	118.8	159.9	237.0	217.2
70-74 years	95.2	111.5	143.6	211.0	192.1
74 years +	146.9	110.1	136.4	189.4	175.4
Women					
Total	2 247.6	106.1	154.9	208.4	163.2
15-19 years	160.7	10.9	24.5	46.0	32.3
20-24 years	142.0	70.2	94.5	124.5	98.8
25-29 years	153.9	100.8	145.8	179.7	141.4
30-34 years	180.1	146.9	181.2	215.5	181.3
35-39 years	189.2	161.2	198.0	237.8	202.9
40-44 years	209.8	164.2	204.1	247.1	212.2
45-49 years	186.6	157.8	199.2	244.1	209.6
50-54 years	179.8	150.4	192.6	239.0	203.9
55-59 years	177.5	142.3	183.6	233.0	197.4
60-64 years	187.5	116.6	149.9	204.3	172.7
65-69 years	136.5	87.3	122.2	161.8	141.4
70-74 years	108.6	81.0	119.1	149.6	132.3
74 years +	235.4	103.9	129.5	154.6	141.6

For further information visit www.statbank.dk/06

Table 225 (page 1 of 2) **Average income in municipalities. 2007**

Municipality-code		Men			Women			Total		
		Primary income	Transfer income	Disposable income	Primary income	Transfer income	Disposable income	Primary income	Transfer income	Disposable income
DKK thousands										
	All Denmark	239.2	53.2	206.1	151.1	70.1	163.2	194.4	61.8	184.3
	Copenhagen city	229.7	49.3	187.1	162.9	65.7	162.7	195.3	57.7	174.6
101	Copenhagen	220.4	47.4	177.4	159.3	63.9	157.1	189.3	55.8	167.1
147	Frederiksberg	270.3	56.0	222.7	176.4	72.9	181.8	219.7	65.1	200.7
155	Dragør	297.1	64.5	266.5	190.4	70.0	204.9	241.7	67.4	234.5
185	Tårnby	237.5	54.6	207.9	166.1	68.4	173.0	200.4	61.8	189.8
	Copenhagen surburban	266.5	56.6	231.3	169.8	72.5	184.0	216.2	64.9	206.7
165	Albertslund	211.3	52.3	180.6	151.8	68.3	156.5	181.2	60.4	168.4
151	Ballerup	233.3	60.6	202.3	161.3	73.9	169.0	196.2	67.4	185.1
153	Brøndby	206.9	59.7	182.9	141.5	76.2	156.4	172.9	68.3	169.1
157	Gentofte	431.8	64.7	394.2	209.2	75.8	250.8	311.5	70.7	316.7
159	Gladsaxe	247.6	52.8	209.7	170.8	71.2	177.5	207.7	62.3	193.0
161	Glostrup	245.2	53.0	205.8	161.2	71.7	169.0	201.2	62.8	186.5
163	Herlev	227.5	57.2	199.3	156.2	73.2	168.7	190.1	65.6	183.2
167	Hvidovre	228.8	53.0	196.1	159.6	69.9	166.3	192.9	61.7	180.7
169	Høje-Taastrup	245.4	50.0	202.8	166.0	66.5	168.5	205.2	58.3	185.5
183	Ishøj	218.5	48.2	181.4	151.4	67.6	157.7	184.6	58.0	169.4
173	Lyngby-Taarbæk	313.7	63.1	272.9	187.1	78.3	210.8	246.7	71.2	240.0
175	Rødovre	225.6	55.6	194.6	153.5	75.7	168.7	187.9	66.1	181.1
187	Vallensbæk	281.4	53.8	238.0	195.9	61.6	190.3	238.4	57.7	214.0
	Nordsjælland	301.4	59.5	264.0	182.7	70.0	195.0	240.2	64.9	228.4
201	Allerød	340.3	54.8	273.6	211.4	61.0	207.4	274.1	58.0	239.6
240	Egedal	309.5	45.4	246.5	205.1	56.6	191.3	256.6	51.1	218.5
210	Fredensborg	303.8	56.4	255.9	183.3	68.5	193.1	241.3	62.7	223.3
250	Frederikssund	258.4	52.2	221.3	169.3	67.8	175.8	213.2	60.1	198.2
190	Furesø	316.2	64.7	271.7	200.6	71.6	205.6	256.1	68.3	237.3
270	Gribskov	252.8	55.9	230.8	166.5	67.9	185.7	209.1	62.0	208.0
260	Halsnæs	218.3	58.1	199.9	153.2	72.8	167.5	185.5	65.5	183.5
217	Helsingør	253.4	62.7	235.2	158.9	75.3	177.4	204.4	69.2	205.2
219	Hillerød	288.2	53.2	238.3	185.2	65.2	184.7	234.8	59.4	210.5
223	Hørsholm	434.4	77.4	396.5	193.1	80.2	227.9	304.3	78.9	305.6
230	Rudersdal	403.0	75.1	374.5	201.7	78.2	237.8	297.2	76.7	302.7
	Bornholm	178.4	66.3	173.2	115.5	81.1	145.0	146.3	73.9	158.8
	Østsjælland	277.7	50.4	233.0	179.9	64.0	183.6	227.6	57.4	207.7
253	Greve	281.2	51.5	239.3	186.0	63.2	193.8	232.5	57.5	216.0
259	Køge	258.4	48.1	213.2	167.9	66.0	171.0	212.0	57.3	191.6
350	Lejre	283.1	47.1	236.9	185.9	59.6	182.7	234.2	53.4	209.7
265	Roskilde	277.7	53.3	234.6	178.2	65.8	183.7	226.4	59.7	208.4
269	Solrød	316.5	47.1	261.0	198.0	59.0	194.8	255.9	53.2	227.2
	Vest- og Sydsjælland	218.6	56.9	194.7	140.2	73.5	156.2	178.8	65.3	175.1
320	Faxe	246.0	49.3	203.9	152.7	68.3	158.5	198.8	58.9	180.9
376	Guldborgsund	191.6	62.8	184.3	125.2	77.3	150.8	157.9	70.2	167.3
316	Holbæk	241.2	49.5	203.4	156.6	67.2	163.6	198.0	58.6	183.1
326	Kalundborg	225.5	55.3	198.0	142.4	73.3	156.2	183.8	64.3	177.0
360	Lolland	170.2	70.6	169.2	110.3	84.6	139.9	140.2	77.6	154.6
370	Næstved	230.8	52.7	200.9	147.2	70.8	158.2	188.0	62.0	179.1
306	Odsherred	195.9	68.2	187.8	127.9	80.1	153.7	161.7	74.2	170.6
329	Ringsted	249.0	46.6	210.5	159.8	65.6	164.5	203.7	56.2	187.2
330	Slagelse	214.7	57.9	193.5	136.0	74.7	155.1	174.5	66.5	173.9
340	Sorø	241.9	51.0	202.9	153.6	69.7	161.3	197.0	60.5	181.8
336	Stevns	245.7	51.2	211.0	154.9	67.5	165.9	200.2	59.3	188.4
390	Vordingborg	202.8	62.6	186.3	132.2	77.6	154.8	166.9	70.2	170.3

For further information visit www.statbank.dk/06

Table 225 (page 2 of 2) **Average income in municipalities. 2007**

Municipality-code		Men			Women			Total		
		Primary income	Transfer income	Disposable income	Primary income	Transfer income	Disposable income	Primary income	Transfer income	Disposable income
DKK thousands										
	Fyn	212.0	56.7	190.4	134.1	74.2	153.2	172.4	65.6	171.5
420	Assens	222.2	52.5	192.6	140.1	70.8	151.0	180.9	61.7	171.6
430	Faaborg-Midtfyn	214.7	55.2	187.9	134.3	74.1	151.8	174.2	64.7	169.7
440	Kerteminde	228.8	55.6	202.2	137.2	73.8	154.8	182.4	64.8	178.2
482	Langeland	168.7	70.9	175.0	106.0	83.4	142.1	137.0	77.2	158.4
410	Middelfart	238.5	55.1	205.5	148.3	71.4	159.9	192.8	63.4	182.4
480	Nordfyns	220.0	50.1	189.4	137.8	70.3	149.5	179.1	60.2	169.5
450	Nyborg	209.2	61.8	187.4	132.0	77.1	150.9	170.1	69.5	168.9
461	Odense	208.3	56.0	187.0	134.1	74.0	154.4	170.0	65.3	170.2
479	Svendborg	203.8	59.9	193.9	130.3	75.7	153.8	166.5	67.9	173.5
492	Ærø	173.8	71.7	190.5	100.0	84.7	147.3	137.0	78.2	169.0
	Syddjylland	233.3	51.5	201.4	141.9	69.6	154.0	187.3	60.6	177.5
530	Billund	243.2	46.2	210.1	143.9	68.6	154.2	193.7	57.3	182.3
561	Esbjerg	229.6	53.8	200.4	138.6	71.3	151.9	183.7	62.6	176.0
563	Fanø	228.7	70.4	230.0	142.9	74.7	168.8	185.1	72.6	198.9
607	Fredericia	233.9	56.7	199.5	142.3	74.2	156.5	187.8	65.5	177.8
510	Haderslev	225.6	53.8	195.7	138.2	72.1	151.7	181.6	63.0	173.5
621	Kolding	249.8	47.4	205.7	150.8	66.2	157.4	199.6	56.9	181.3
540	Sønderborg	211.9	56.0	187.8	136.5	71.0	149.6	173.8	63.6	168.5
550	Tønder	217.8	52.7	196.3	126.6	72.4	146.7	171.8	62.6	171.3
573	Varde	239.3	47.0	208.1	143.0	66.3	154.6	191.5	56.6	181.6
575	Vejen	237.0	45.9	196.7	137.0	68.4	149.5	187.4	57.1	173.3
630	Vejle	249.1	49.2	212.0	155.2	67.6	162.9	201.5	58.5	187.1
580	Aabenraa	222.0	52.4	198.8	134.5	68.7	150.3	177.8	60.6	174.3
	Østjylland	239.6	50.4	204.4	147.6	68.5	160.8	192.9	59.6	182.3
710	Favrskov	262.4	42.3	212.9	162.6	62.1	163.9	212.6	52.2	188.5
766	Hedensted	256.4	40.9	214.9	153.6	63.9	160.9	205.3	52.3	188.1
615	Horsens	236.3	48.1	199.2	146.7	67.4	156.1	191.3	57.8	177.5
707	Norddjurs	211.5	55.7	191.5	127.5	73.6	147.5	169.6	64.7	169.5
727	Odder	243.1	50.8	213.8	151.5	67.7	165.0	196.4	59.4	188.9
730	Randers	224.0	53.3	191.4	135.7	73.3	152.2	179.3	63.4	171.5
741	Samsø	178.4	68.5	183.8	113.8	85.4	147.9	145.1	77.2	165.3
746	Skanderborg	276.5	44.1	226.7	173.8	60.9	174.1	224.6	52.6	200.2
706	Syddjurs	232.6	55.8	207.4	141.6	71.3	175.1	186.9	63.6	191.2
751	Århus	227.7	53.1	199.9	146.2	69.5	161.0	185.8	61.6	179.9
	Vestjylland	240.7	47.6	204.8	143.7	67.7	154.6	192.3	57.6	179.8
657	Herning	243.7	44.8	206.5	144.6	65.9	155.5	194.1	55.4	181.0
661	Holstebro	246.0	47.5	209.7	144.4	66.8	155.5	194.7	57.2	182.4
756	Ikast-Brande	234.1	44.8	208.5	141.7	67.0	152.9	188.4	55.7	181.0
665	Lemvig	240.2	51.5	208.9	129.7	71.3	148.4	185.6	61.3	179.1
760	Ringkøbing-Skjern	250.1	45.2	210.4	145.0	65.7	156.5	198.2	55.3	183.8
740	Silkeborg	276.0	47.1	218.7	152.6	66.7	162.7	213.5	57.0	190.3
779	Skive	225.5	51.7	194.2	135.7	70.7	149.1	181.1	61.1	171.9
671	Struer	228.7	52.9	195.7	138.0	70.7	150.6	183.6	61.7	173.3
791	Viborg	242.7	48.4	202.2	151.3	68.4	158.0	196.8	58.4	180.0
	Nordjylland	220.5	53.3	190.7	134.5	72.2	150.4	177.4	62.8	170.5
810	Brønderslev	221.1	53.2	186.9	132.5	73.4	148.4	176.9	63.3	167.7
813	Frederikshavn	212.5	58.1	190.7	125.8	76.3	148.1	168.8	67.2	169.3
860	Hjørring	215.6	55.3	185.7	130.4	74.2	148.3	172.6	64.8	166.8
849	Jammerbugt	218.3	52.3	189.1	134.9	72.3	150.7	176.8	62.2	170.0
825	Læsø	188.3	66.5	189.3	106.0	82.6	141.0	147.5	74.5	165.4
846	Mariagerfjord	228.1	50.8	193.7	137.3	71.0	151.5	182.8	60.9	172.6
773	Morsø	208.7	55.3	181.7	121.7	74.4	143.6	165.3	64.8	162.7
840	Rebild	254.5	43.7	205.2	154.5	63.7	157.1	205.2	53.6	181.5
787	Thisted	226.9	50.9	197.7	133.2	70.3	148.5	180.0	60.6	173.1
820	Vesthimmerlands	221.7	50.3	189.9	132.7	71.6	147.5	177.6	60.9	168.8
851	Aalborg	218.6	53.9	190.2	138.2	71.5	152.8	178.0	62.8	171.3

Table 226

Income, consumption and taxation by household income. 2006

	Total household income					Total
	Under DKK 150 000	DKK 150 000- 299 999	DKK 300 000- 499 999	DKK 500 000- 799 999	DKK 800 000 +	
	DKK per household					
A. Earned income (B+C)	15 803	47 014	218 867	504 089	904 477	358 958
B. Wages and salaries, etc.	30 421	46 770	211 924	488 104	832 168	340 721
C. Entrepreneurial income, etc.	-14 618	243	6 944	15 985	72 309	18 237
D. Property income	3 265	16 063	29 484	41 600	106 846	41 700
E. Private transfers	4 552	26 355	39 492	31 656	51 447	33 814
F. Transfers from the public sector	72 051	124 677	92 938	61 948	33 033	80 768
G. Other income and reconciliation	3 850	3 353	7 380	6 429	7 483	5 847
H. Gross income (A+D+E+F+G)	99 521	217 461	388 160	645 723	1 103 286	521 087
I. Capital transfers to the household	157	925	1 006	3 992	10 157	3 394
J. Total income (H+I)	99 678	218 386	389 166	649 715	1 113 443	524 481
K. Income taxes, etc.	23 554	51 768	109 622	195 703	376 854	159 969
L. Private interest payments, etc.	2 557	6 861	20 295	44 566	69 146	30 691
M. Disposable amount (J-K-L)	73 567	159 758	259 250	409 447	667 443	333 822
N. Payments from capital pensions	0	972	3 696	1 584	4 283	2 301
O. Tax on payments from capital pensions	0	389	1 478	633	1 713	920
P. Disposable amount (M+N-O)	73 567	160 341	261 467	410 397	670 013	335 203
Q. Fines	181	199	345	437	653	375
R. Gifts, charity	3 216	4 873	6 405	2 889	7 679	5 148
S. Membership fees	910	1 190	3 548	6 470	8 007	4 297
T. Net saving (U+V+X+Y)	-57 234	-20 517	-2 240	55 418	140 092	30 096
U. Pension and ATP contributions	2 606	4 041	22 055	49 277	115 546	40 330
V. Payments to private life insurance, etc.	52	303	923	3 309	4 921	2 041
X. Value of conversion, etc. of buildings	5 081	2 148	18 561	19 644	45 073	18 555
Y. Other saving, including residual	-64 972	-27 009	-43 778	-16 812	-25 448	-30 829
Z. Consumption (P-Q-R-S-T)	126 494	174 595	253 410	345 184	513 583	295 286
Food	14 822	18 245	26 538	36 367	45 329	29 475
Beverages and tobacco	6 391	8 051	9 933	12 647	13 651	10 549
Clothing and footwear	9 981	7 428	11 267	17 862	28 433	15 042
Rent (housing)	32 892	47 455	54 602	66 744	80 502	59 024
Electricity and fuels	9 865	15 627	20 322	23 885	29 513	20 937
Furniture, furnishings, household services	5 810	8 085	12 614	19 529	34 023	16 687
Medical products, services of physicians	3 899	7 198	6 310	9 577	11 131	8 084
Purchase of vehicles	2 139	4 221	17 131	28 405	39 489	19 644
Other transport services and communications	12 841	18 777	29 442	41 894	63 134	34 871
Recreation, entertainment, travel	13 581	21 040	29 211	37 255	88 560	39 165
Other goods and services	14 273	18 468	36 041	51 022	79 818	41 809
Indirect transfers from the public sector, total	89 094	51 714	48 493	71 038	87 694	65 309
Child care	8 984	4 801	11 936	19 063	32 196	15 440
Education	42 311	15 237	24 866	37 974	45 773	30 804
Health	37 799	31 676	11 692	14 001	9 725	19 066
Taxes on production and imports, total	24 792	37 134	61 420	86 089	122 458	69 984
VAT	17 565	22 251	36 378	48 365	75 662	41 682
Excise duty	5 914	12 033	21 354	32 270	37 283	23 469
Real property tax	3	159	383	340	994	402
Stamp duties	1 310	2 692	3 305	5 114	8 518	4 432
	number					
Persons per household	1.3	1.4	2.0	2.7	3.1	2.2
of whom adults	1.1	1.3	1.6	2.0	2.1	1.7
Households in the survey	164	601	630	671	498	2 564
Households in Denmark - thousands	181	647	561	603	468	2 459

For further information visit www.statbank.dk/fu5 and [fu6](http://www.statbank.dk/fu6)

Table 227

Income, consumption and taxation, by socio-economic status. 2006

	Socio-economic status of head of household								Total
	Self-employed	Employees - upper level	Employees - medium level	Employees - basic level	Unemployed	Receiving education	Pensioners, early retirement	Other not economically active	
	DKK per household								
A. Earned income (B+C)	618 452	768 766	589 800	446 968	96 823	64 576	23 369	89 630	358 958
B. Wages and salaries, etc.	189 570	766 537	595 480	442 258	95 221	64 009	21 698	78 638	340 721
C. Entrepreneurial income, etc.	428 883	2 230	-5 679	4 711	1 602	568	1 671	10 993	18 237
D. Property income	55 817	46 734	44 391	47 136	8 968	2 246	39 449	6 508	41 700
E. Private transfers	105 855	26 109	15 429	13 623	5 601	10 219	66 054	19 024	33 814
F. Transfers from the public sector	34 020	31 499	34 280	49 889	141 858	60 605	154 913	145 611	80 768
G. Other income and reconciliation	10 478	9 896	6 763	4 162	1 200	945	4 135	19 436	5 847
H. Gross income (A+D+E+F+G)	824 622	883 005	690 664	561 778	254 450	138 592	287 920	280 209	521 087
I. Capital transfers to the household	5 532	3 515	4 001	3 096	2 729	4 018	3 622	44	3 394
J. Total income (H+I)	830 154	886 520	694 664	564 874	257 178	142 610	291 542	280 253	524 481
K. Income taxes, etc.	237 812	307 984	230 787	172 143	67 019	26 278	72 212	67 017	159 969
L. Private interest payments, etc.	32 396	56 694	53 277	36 332	7 617	3 361	9 159	11 930	30 691
M. Disposable amount (J-K-L)	559 947	521 843	410 600	356 399	182 542	112 971	210 171	201 306	333 822
N. Payments from capital pensions	3 059	142	-	1 942	8	-	5 118	-	2 301
O. Tax on payments from capital pensions	1 224	57	-	776	3	-	2 047	-	920
P. Disposable amount (M+N-O)	561 782	521 928	410 600	357 564	182 547	112 971	213 243	201 306	335 203
Q. Fines	394	443	458	466	161	324	168	698	375
R. Gifts, charity	2 084	7 624	3 101	3 172	246	224	9 185	248	5 148
S. Membership fees	3 210	7 618	5 990	5 572	1 741	1 659	1 361	2 447	4 297
T. Net saving (U+V+X+Y)	229 506	52 639	30 482	36 110	9 893	-48 794	1 213	-19 839	30 096
U. Pension and ATP contributions	110 288	90 224	58 409	42 953	10 565	2 846	8 843	7 753	40 330
V. Payments to private life insurance, etc.	7 507	4 635	2 405	2 269	71	55	309	416	2 041
X. Value of conversion, etc. of buildings	31 279	34 813	33 611	22 374	3 825	152	2 947	6 745	18 555
Y. Other saving, including residual	80 432	-77 033	-63 943	-31 487	-4 569	-51 848	-10 885	-34 753	-30 829
Z. Consumption (P-Q-R-S-T)	326 588	453 604	370 569	312 244	170 506	159 559	201 316	217 751	295 286
Food	33 165	42 361	33 991	31 184	22 624	18 672	21 284	26 591	29 475
Beverages and tobacco	10 465	12 912	11 107	11 384	10 230	5 813	8 799	9 816	10 549
Clothing and footwear	15 744	23 004	21 025	16 862	3 116	17 478	7 318	15 275	15 042
Rent (housing)	64 386	74 821	70 016	57 315	48 392	33 382	53 712	46 059	59 024
Electricity and fuels	27 992	22 400	26 014	21 405	13 573	8 011	18 950	14 707	20 937
Furniture, furnishings, household services	18 197	26 450	27 350	18 004	6 969	5 310	8 482	11 416	16 687
Medical products, services of physicians	5 834	14 011	5 353	6 931	2 624	4 983	9 337	6 226	8 084
Purchase of vehicles	24 232	22 968	29 634	25 769	692	911	10 323	4 537	19 644
Other transport services and communications	31 556	53 269	45 991	39 956	20 798	19 679	19 720	27 056	34 871
Recreation, entertainment, travels	48 175	90 933	43 316	36 218	19 240	22 867	22 874	26 140	39 165
Other goods and services	46 844	70 474	56 771	47 215	22 247	22 454	20 519	29 928	41 809
Indirect transfers from the public sector, total	47 488	87 595	68 929	67 246	55 802	111 817	47 255	96 358	65 309
Child care	8 962	32 249	23 631	17 860	30 779	20 036	97	27 553	15 440
Education	31 592	46 765	37 944	39 011	17 689	87 705	3 513	57 586	30 804
Health	6 934	8 581	7 354	10 375	7 334	4 076	43 644	11 219	19 066
Taxes on production and import, total	81 157	101 223	88 653	78 475	35 703	28 316	46 024	42 742	69 984
VAT	43 803	66 471	54 138	45 845	21 618	21 192	25 173	29 177	41 682
Excise duty	30 504	26 832	27 451	28 487	12 172	5 874	16 818	11 398	23 469
Stamp duties	383	1 105	656	323	69	9	210	5	402
Real property tax	6 467	6 815	6 408	3 820	1 844	1 241	3 823	2 163	4 432
	number								
Persons per household	2.2	2.8	2.5	2.4	2.1	1.5	1.5	2.4	2.2
of whom adults	1.6	1.9	1.8	1.8	1.4	1.3	1.4	1.6	1.7
Households in the survey	91	405	393	820	42	59	668	86	2 564
Households in Denmark - thousands	92	289	297	886	39	56	706	95	2 459

For further information visit www.statbank.dk/fu5 and [fu6](#)

Table 228

Consumption for selected years

	DKK per household			Percentage		
	2000	2003	2006	2000	2003	2006
Total income	417 529	435 414	524 481	100,0	100,0	100,0
Income taxes etc.	129 964	138 579	159 969	31.1	31.8	30.5
Private interest payments, etc.	27 977	28 034	30 691	6.7	6.4	5.9
Disposable amount	259 589	268 801	333 822	62.2	61.7	63.6
Consumption expenditure	227 283	238 555	295 286	100.0	100.0	100.0
Food	25 605	26 428	29 475	11.3	11.1	10.0
Rice, bread, pasta, cookies, flour etc.	4 737	4 852	5 200	2.1	2.0	1.8
Meat, fish and spread/sandwich filling	7 569	7 483	9 087	3.3	3.1	3.1
Milk products, eggs, margarine etc.	4 690	4 819	4 962	2.1	2.0	1.7
Fruit	1 662	1 991	2 443	0.7	0.8	0.8
Vegetables	2 860	3 048	3 426	1.3	1.3	1.2
Sugar, jam, chocolate, sweets, ice etc.	3 291	3 345	3 447	1.4	1.4	1.2
Salt, spices, bouillon etc.	795	891	911	0.3	0.4	0.3
Beverages and tobacco	12 053	11 176	10 549	5.3	4.7	3.6
Beverages without alcol	2 939	2 732	2 904	1.3	1.1	1.0
Beverages with alcol	4 851	4 561	3 761	2.1	1.9	1.3
Cigarettes and tobacco	4 263	3 883	3 884	1.9	1.6	1.3
Clothing and footwear	12 356	11 595	15 042	5.4	4.9	5.1
Clothing etc.	10 075	9 433	11 753	4.4	4.0	4.0
Footwear etc.	2 281	2 162	3 290	1.0	0.9	1.1
Housing, heating etc.	66 033	71 499	79 961	29.1	30.0	27.1
Rent etc.	40 113	42 885	47 604	17.6	18.0	16.1
Repairs, upkeep	4 833	4 496	5 159	2.1	1.9	1.7
Water supply, refuse collection etc.	5 691	6 227	6 260	2.5	2.6	2.1
Electricity, gas, district heating etc.	15 397	17 891	20 937	6.8	7.5	7.1
Furnishings, household services etc.	14 226	14 836	16 687	6.3	6.2	5.7
Furnishing, furniture, fabrics etc.	6 600	6 533	7 701	2.9	2.7	2.6
White goods, kitchen ware etc.	3 071	3 761	3 964	1.4	1.6	1.3
Tools, equipment for house and garden	1 548	1 760	1 903	0.7	0.7	0.6
Cleaning equipment and household services	3 007	2 783	3 119	1.3	1.2	1.1
Medical products and health services	5 131	6 305	8 084	2.3	2.6	2.7
Medical products, vitamins, etc.	1 919	1 939	2 582	0.8	0.8	0.9
Spectacles, plasters, thermometers etc.	703	1 120	1 769	0.3	0.5	0.6
Dentists, physician, hospital etc.	2 509	3 246	3 733	1.1	1.4	1.3
Purchase of vehicles	10 072	10 423	19 644	4.4	4.4	6.7
Cars, motor cycles etc.	9 619	9 932	18 985	4.2	4.2	6.4
Bicycles	453	491	659	0.2	0.2	0.2
Other transport and communication	26 624	27 014	34 871	11.7	11.3	11.8
Petrol and lubricants	8 027	7 681	10 890	3.5	3.2	3.7
Repairs, spare parts and other services	9 867	9 565	12 525	4.3	4.0	4.2
Bus, train, taxi, aeroplane, ferry etc.	3 813	4 180	5 153	1.7	1.8	1.7
Postage, telephone, telephone rentals etc.	4 917	5 588	6 304	2.2	2.3	2.1
Equipment for leisure time and entertainment and travels	25 207	26 539	39 165	11.1	11.1	13.3
Radio, TV, CD, PC, photo equipment etc.	5 178	5 343	7 960	2.3	2.2	2.7
Caravan, boat, musical instruments etc.	968	1 294	6 242	0.4	0.5	2.1
Sports equipment, Toys, plants, pets etc.	5 299	6 215	7 260	2.3	2.6	2.5
Entertainments, licence fee etc.	6 913	7 170	8 161	3.0	3.0	2.8
Newspapers, books, drawing materials etc.	3 479	3 221	4 043	1.5	1.4	1.4
Package holidays	3 370	3 294	5 500	1.5	1.4	1.9
Other goods and services	29 975	32 740	41 809	13.2	13.7	14.2
Educations etc.	855	911	1 435	0.4	0.4	0.5
Expenditure on restaurants, hotels etc.	10 050	9 530	13 167	4.4	4.0	4.5
Hairdressers etc.	5 169	5 314	6 628	2.3	2.2	2.2
Jewellery, bags, prams etc.	1 385	1 685	1 989	0.6	0.7	0.7
Social protection services	2 671	2 987	3 720	1.2	1.3	1.3
Insurances and other services etc.	9 845	12 314	14 869	4.3	5.2	5.0

For further information visit www.statbank.dk/fu5 and [fu6](http://www.statbank.dk/fu6)

Table 229

Consumption expenditure of households by type of household. 2006

	Single persons under 60 years without children	Single persons 60 years + without children	Single persons with children	2 adults, head of household under 60 years without children	2 adults, head of household 60 years + without children	2 adults with children	Households with at least 3 adults	Total
	DKK per household							
A. Earned income (B+C)	262 595	29 356	222 215	526 575	151 214	665 639	609 458	358 958
B. Wages and salaries, etc.	240 549	28 236	212 973	495 712	134 104	643 653	593 895	340 721
C. Entrepreneurial income, etc.	22 046	1 121	9 242	30 863	17 110	21 986	15 563	18 237
D. Property income	46 778	34 400	10 755	35 491	53 328	41 989	53 675	41 700
E. Private transfers	6 540	76 348	33 182	22 995	74 208	14 424	22 633	33 814
F. Transfers from the public sector	35 015	114 583	79 917	56 920	156 369	63 405	98 369	80 768
G. Other income and reconciliation	1 806	2 278	12 935	7 342	8 025	7 803	8 062	5 847
H. Gross income (A+D+E+F+G)	352 734	256 965	359 004	649 321	443 143	793 260	792 197	521 087
I. Capital transfers to the household	1 753	2 716	645	4 923	6 293	2 880	4 127	3 394
J. Total income (H+I)	354 488	259 681	359 649	654 244	449 435	796 140	796 324	524 481
K. Income taxes, etc.	112 976	72 639	92 215	200 730	124 558	256 250	238 822	159 969
L. Private interest payments, etc.	19 491	5 569	18 771	40 231	18 762	61 917	41 312	30 691
M. Disposable amount (J-K-L)	222 021	181 472	248 663	413 284	306 116	477 973	516 190	333 822
N. Payments from capital pensions	-	2 377	587	14	13 943	1	148	2 301
O. Tax on payments from capital pensions	-	951	234	6	5 576	1	59	920
P. Disposable amount (M+N-O)	222 021	182 899	249 016	413 292	314 483	477 974	516 279	335 203
Q. Fines	426	119	662	401	217	524	434	375
R. Gifts, charity	2 746	11 364	518	2 512	9 242	2 703	6 152	5 148
S. Membership fees	2 750	982	3 142	5 777	2 904	7 708	6 653	4 297
T. Net saving (U+V+X+Y)	20 564	8 095	-10 539	64 952	13 737	44 302	46 165	30 096
U. Pension and ATP contributions	28 037	11 103	21 056	54 533	33 810	67 887	57 302	40 330
V. Payments to private life insurance, etc.	1 802	232	1 836	3 525	754	3 137	2 906	2 041
X. Value of conversion, etc. of buildings	7 625	2 362	4 465	44 856	9 090	36 131	8 162	18 555
Y. Other saving, including residual	-16 901	-5 603	-37 896	-37 962	-29 916	-62 853	-22 204	-30 829
Z. Consumption (P-Q-R-S-T)	195 536	162 339	255 233	339 650	288 384	422 737	456 875	295 286
Food	15 589	16 238	28 722	32 467	29 191	44 732	49 851	29 475
Beverages and tobacco	8 976	6 030	7 780	12 658	12 614	12 111	13 950	10 549
Clothing and footwear	9 815	5 936	25 997	13 417	12 661	26 854	18 620	15 042
Rent (housing)	43 029	51 351	57 389	63 817	62 605	71 678	70 700	59 024
Electricity and fuels	14 636	16 706	17 500	20 423	23 144	28 660	26 300	20 937
Furniture, furnishings, household services	10 241	7 662	14 716	22 739	14 210	26 954	19 643	16 687
Medical products, services of physicians	4 437	5 773	4 511	10 180	13 930	8 420	9 743	8 084
Purchase of vehicles	12 378	2 581	5 465	26 126	23 920	24 598	49 274	19 644
Other transport services and communications	24 170	13 745	27 740	43 820	30 484	55 036	49 368	34 871
Recreation, entertainment, travels	22 978	19 038	32 417	48 158	34 070	50 207	89 507	39 165
Other goods and services	29 286	17 278	32 996	45 844	31 556	73 487	59 919	41 809
Indirect transfers from the public sector, total	24 071	58 698	128 508	33 021	22 361	145 029	87 659	65 309
Child care	-	-	54 783	-	-	63 068	2 290	15 440
Education	18 035	766	65 224	24 948	1 169	67 721	73 981	30 804
Health	6 036	57 933	8 502	8 073	21 192	14 240	11 388	19 066
Taxes on production and import, total	43 279	33 284	51 752	87 163	73 645	99 416	111 853	69 984
VAT	26 290	19 745	33 859	52 055	37 413	63 358	63 782	41 682
Excise duty	14 157	9 743	14 391	30 291	30 386	29 294	41 532	23 469
Stamp duties	395	107	92	419	477	702	291	402
Real property tax	2 436	3 688	3 410	4 399	5 369	6 062	6 248	4 432
	number							
Persons per household	1.0	1.0	2.5	2.0	2.0	3.9	3.7	2.2
of whom adults	1.0	1.0	1.0	2.0	2.0	2.0	3.1	1.7
Households in the survey	585	340	118	453	402	540	126	2 564
Households in Denmark - thousands	523	402	117	395	330	493	199	2 459

For further information visit www.statbank.dk/fu5 and [fu6](http://www.statbank.dk/fu6)

Table 230

Consumption expenditure of households by type of dwelling. 2006

	Owner occupied detached house	Owner- occupied flat	Rented detached house	Rented flat	Flat in housing co- operative	Rented room	Dwelling free of charge ¹	Total
	DKK per household							
Total income	689 279	562 290	398 868	331 677	418 482	130 566	1 001 859	524 481
Income taxes, etc.	211 790	177 685	124 806	94 770	136 309	28 469	349 603	159 969
Disposable amount	429 766	334 234	264 782	230 502	268 674	100 757	601 399	335 203
Net saving	51 748	28 304	14 014	12 563	-8 499	-25 070	134 178	30 096
Total consumption	366 520	297 310	236 375	212 005	265 750	123 410	461 564	295 286
A Food	34 410	27 740	26 565	23 889	27 220	16 033	38 410	29 475
B Beverages and tobacco	11 031	11 128	11 890	9 877	9 549	6 007	11 466	10 549
C Clothing and footwear	17 245	15 882	7 463	14 059	13 852	9 493	50 811	15 042
D Housing, total	68 236	61 209	50 110	50 067	54 030	24 528	47 202	59 024
Rent	601	392	42 873	43 949	45 465	22 047	27 826	20 208
Stamp duties, loans in owner-occupied dwelling	-	-	-	-	268	-	-	20
Permanent renting of secondary dwelling, etc.	73	126	232	131	103	2	10	106
Imputed rent, owner-occupied dwelling	42 820	29 106	-	-	-	-	741	22 176
Land tax, owner-occupied dwelling	6 260	4 367	3	62	34	-	-	3 267
Stamp duties, loans in owner-occupied dwelling	347	635	-	-	-	-	-	199
Value of dwelling free of charge	74	-	-	36	-	-	8 424	62
Imputed rent, secondary dwelling	1 346	1 625	447	1 084	1 402	-	4 477	1 182
Land tax, secondary dwelling	412	597	163	308	680	-	1 883	382
Stamp duties, loans in secondary dwelling	-	-	-	5	12	-	-	2
Materials for maintenance of dwelling	1 837	430	551	281	422	756	-	1 089
Materials for repair of dwelling	1 034	3 990	657	276	241	1	-	849
Flagstones, etc. for gardens	528	-	80	13	5	-	-	267
Repair, etc. workman, dwelling	4 910	5 421	780	437	1 626	-	-	2 955
Water supply	1 731	1 789	1 038	846	1 315	516	1 685	1 366
Refuse collection	2 036	1 723	1 498	1 465	1 144	762	885	1 713
Water drainage, sewerage	2 104	2 200	1 033	825	1 118	396	1 267	1 541
Miscellaneous maintenance	1 854	1 070	720	234	137	29	-	1 089
Payments to homeowners' association, etc.	269	7 738	36	115	55	18	3	550
E Electricity and fuels	26 733	18 359	17 565	14 739	17 091	5 789	29 089	20 937
F Furniture, furnishings, household services	21 170	22 331	12 449	10 743	13 906	7 470	24 016	16 687
G Medical products, services of physicians	9 983	8 995	6 859	5 672	6 758	4 538	8 325	8 084
H Purchase of vehicles	29 241	15 316	14 797	7 700	17 135	-1 633	38 412	19 644
I Transport services and communications	45 251	33 262	29 566	21 982	29 591	14 137	42 834	34 871
J Recreation, entertainment, travels	51 305	34 094	29 662	23 996	37 306	19 249	67 055	39 165
K Other goods and services	51 916	48 995	29 449	29 281	39 312	17 799	103 944	41 809
Interest on mortgage loans	38 021	40 482	169	1 452	1 141	-	-	20 908
Extension, etc. of dwelling	32 698	28 173	1 085	1 904	9 541	-	108	18 555
Total income per person	264 091	305 592	204 548	193 963	243 303	102 808	291 238	242 815
Total consumption per person	140 429	161 581	121 218	123 979	154 506	97 173	134 175	136 707
	number							
Size of dwelling, square metre	149	96	100	86	90	53	171	118
Year of construction	1943	1948	1951	1957	1961	1965	1930	1950
Persons per household	2.6	1.8	1.9	1.7	1.7	1.3	3.4	2.2
of whom adults	1.9	1.4	1.5	1.4	1.5	1.2	2.0	1.7
Households in the survey	1 215	160	175	713	230	66	5	2 564
Households in Denmark - thousands	1 191	121	217	677	183	66	5	2 459
Persons in Denmark - thousands	3 106	222	421	1 160	314	84	16	5 324

¹ The figures are subject to uncertainty due to the small number of households in the sample.

For further information visit www.statbank.dk/fu5 and [fu6](http://www.statbank.dk/fu6)

Table 231 (page 1 of 2) **Price index for domestic supply**

2005/ HS ¹ chapter		Weight	2007 Average	2008 Average
		per cent	2005=100	
02	Meat and edible meat offals	1.76	103.4	108.5
03	Fish and crustaceans	1.44	110.3	106.3
04	Milk and dairy produce, etc.	3.57	105.5	114.2
05	Products of animal origin n.e.s.	0.20	112.5	117.5
07	Vegetables	0.68	124.2	130.4
08	Fruit, nuts, citrus fruit, melons	0.52	100.3	101.9
09	Coffee, tea, spices	0.24	107.6	119.3
10	Cereals	0.74	157.6	198.7
11	Products of the milling industry, malt, starch, inulin and wheat gluten	0.27	130.1	165.9
12	Oil seeds, oleaginous fruit; other seeds and fruit, etc.	0.67	110.4	124.8
13	Shellac, hydrated rubber and resin, etc.	0.15	106.9	104.4
15	Animal and vegetable fats and oils	0.67	127.6	154.8
16	Preparations of meat, fish and crustaceans	1.38	105.5	105.2
17	Sugar and sugar confectionery	0.58	104.2	107.6
18	Cocoa and other cocoa preparations	0.37	101.9	107.8
19	Preparations of cereals, flour, starch or milk, bakery products	1.00	102.7	114.8
20	Preparations of vegetables, fruit, nuts or other plants	0.59	127.5	121.3
21	Miscellaneous edible preparations	0.74	105.0	111.8
22	Beverages, ethanol and vinegar	1.66	106.3	109.8
23	Residual products from the food processing industry, preparations of animal feedstuffs	2.02	125.0	136.7
24	Tobacco and manufactured tobacco substitutes	0.44	105.7	109.3
25	Salt, sulphur, soil and stones; plaster, lime, cement	0.61	109.9	116.2
27	Mineral fuels, mineraloil and distillery products thereof	7.95	121.7	155.4
28	Inorganic chemicals	0.40	107.8	143.2
29	Organic chemicals	1.14	101.0	108.7
30	Pharmaceutical products	2.22	102.7	102.6
31	Fertilizers	0.17	114.5	169.8
32	Dyes, colours, paints	0.76	101.9	104.4
33	Volatile vegetable oils and essential oils; perfumery, cosmetics, toilet preparations	0.56	104.1	116.0
34	Soap, washing and cleaning preparations	0.53	103.0	108.2
35	Albuminoidal substances, modified starch, glues, and enzymes	0.38	100.0	99.8
37	Photographic and cinematographic goods	0.19	101.8	101.9
38	Miscellaneous chemical products	1.11	104.7	104.5
39	Artificial resins and plastic materials	4.78	107.3	112.2
40	Rubber and articles thereof	0.70	103.3	105.4
41	Raw hides and skins and leather	0.09	107.5	100.6
42	Articles of leather; saddlery; luggage and bags, etc.	0.41	102.6	105.6
44	Wood and articles of wood	3.19	116.6	118.4
48	Paper and paperboard, articles thereof	2.64	103.2	104.7
51	Wool and animal hair; yarn and textiles fabrics of horsehair	0.11	99.7	96.2
54	Continuous man-made fibers	0.20	103.8	104.3
55	Discontinuous man-made fibers	0.12	102.9	96.6
56	Cotton wool, nonwovens; cordage and rope, and articles thereof	0.16	98.7	100.8
57	Carpets and other flooring of textile materials	0.13	105.3	107.7
59	Impregnated, knitted or crocheted textile articles, technical textile articles	0.09	102.5	106.5
61	Articles of apparel and accessories, of knitwear	1.30	97.9	97.0
62	Articles of apparel and accessories, except knitwear	1.62	97.4	97.0
63	Other made up textile articles	0.36	99.2	98.4
64	Footwear, leggings and related parts	0.66	103.3	103.1
68	Articles of stone, plaster, cement, etc.	1.47	115.0	121.2
69	Ceramic products	0.39	108.6	113.0
70	Glass and glassware	0.87	108.6	115.0
71	Precious metals and articles thereof	0.27	130.5	144.8
72	Iron and steel	2.21	121.8	130.4
73	Articles of iron and steel	4.85	108.7	114.2
74	Copper and articles thereof	0.49	129.7	121.2

¹ HS chapter is the nomenclature of the Customs Cooperation Council (Harmonized System).

For further information, visit www.statbank.dk/pris11

Table 231 (page 2 of 2) **Price index for domestic supply**

2005/ HS ¹ chapter		Weight	2007 Average	2008 Average
		Per cent	———— 2005 =100 ————	
76	Aluminium and articles thereof	1.36	120.4	119.5
79	Zinc and articles thereof	0.07	266.6	189.5
82	Tools and implements of base metal	0.34	100.5	102.7
83	Miscellaneous articles of base metal	0.61	108.2	115.6
84	Machinery and appliances; mechanical, implements and spare parts	12.48	95.7	95.7
85	Electrical machinery and equipment and related parts	10.03	103.7	104.5
87	Vehicles and spare parts	6.18	102.7	105.4
90	Optical photo and measuring equipment	2.59	101.5	100.8
91	Clocks and watches and related parts	0.07	94.1	86.6
94	Furniture and specified lightning equipment	2.72	104.8	107.1
95	Toys; games, sport goods, etc.	0.72	101.2	100.9

Table 232

Persons by the welfare of the family. 2007

	0-15 years	16-19 years	20-24 years	25-29 years	30-39 years	40-49 years	50-59 years	60-69 years	69+ years	Total
How easy is it for the family to live within their income?	per cent									
Total	100	100	100	100	100	100	100	100	100	100
Very easy	17	17	12	15	18	23	31	28	22	21
Easy	36	39	32	36	40	39	40	42	54	40
Fairly easy	27	23	25	26	25	22	18	18	16	22
Somewhat difficult	13	13	16	15	11	10	5	8	6	10
Difficult or very difficult	9	8	15	8	7	6	5	4	2	7
Do the family think that expenditure on housing is a burden?										
Total	100	100	100	100	100	100	100	100	100	100
Not a problem	61	68	57	61	64	70	83	87	90	72
A burden to some extent	31	25	36	29	28	24	14	11	9	22
A heavy burden	8	7	7	9	8	7	3	3	1	6

For further information visit www.statistikbank.dk/ifv1 and ifv5

Table 233

Price index for domestic supply by categories of use

	Weight	2007 Average	2008 Average
	per cent	— 2005 = 100 —	
Price Index for Domestic Supply total	100.00	108.4	115.4
Producers' materials	62.84	110.1	119.1
Raw materials for agriculture	3.08	128.5	149.5
Raw materials for other industries	42.33	112.1	120.8
Fuels and lubricants	4.46	117.6	145.3
Machinery and tools; goods transport equipment	12.98	97.6	98.1
Consumer goods	37.16	104.3	106.8
Foods of animal origin, excl. fish	6.56	105.1	111.0
Fish and fish products	1.94	107.6	102.1
Foods of vegetable origin	2.81	113.4	118.3
Beverages and tobacco	2.81	106.1	109.9
Other consumer goods	23.04	101.7	103.4
Distribution by origin:			
Danish goods	36.77	111.9	122.4
Danish producers' materials	25.35	114.2	127.7
Danish consumer goods	11.43	106.4	110.4
Imported goods	63.23	105.8	110.1
Imported producers' materials	37.49	107.0	112.6
Imported consumer goods	25.74	102.7	104.0
Imported unprocessed raw materials, total			
= Raw material price index¹ total	9.27	121.7	136.8
Unprocessed materials for agriculture	0.61	124.0	148.1
Unprocessed materials for other industries	6.17	121.7	129.8
Fuels and lubricants	2.49	120.9	153.4

¹ The raw materials price index includes unprocessed, imported raw materials and fuels.

For further information visit www.statbank.dk/pris10 and [pris11](http://www.statbank.dk/pris11)

Table 234

Domestic supply of some important food stuffs

	Supply, total		
	2006	2007	2008
	thousand tonnes		
Milk and cream			
Whole and partly skimmed milk ¹	226	230	220
Skim- and buttermilk	271	279	296
Junket and yoghurt	107	111	106
Other milk products ²	72	73	62
Cream (incl. cultured cream)	47	51	48
Fats			
Butter ³	9	10	10
Margarine	47	45	43
Cheese
Eggs	92	92	..
Meat			
Beef and veal ⁴	147	150	144
Pork ⁴	240	208	195
Poultry meat	117	124	124
Horse meat	1	0	0
Mutton and lamb	7	8	8
Game meat	4	4	4
Flour and groats, etc.			
Wheat flour	330	313	...
Durum wheat e.g. pasta products	33	38	...
Rye flour	84	84	...
Oat-meal	26	26	...
Rice and rice flour	33	35	...
Other flours and groats, etc.	68	66	...
Sugar	205	246	236
Potatoes	299	299	302
Organic products⁵			
Milk and cream	148	166	182
Eggs	7	8	8

Note: The figures shows the supply available for human consumption in Denmark.

¹ Excl. natural milk at producers for consumption. ² Includes various cultured-milk products, chocolate milk and skimmed chocolate milk. ³ In addition, there are mixed products which comprise about 27 mio. kg a year since 1996. ⁴ The figures exclude consumption of edible offals. New calculation method for pork from 2005. ⁵ Part of total supply.

For further information visit www.statbank.dk/fvf1 and [fvf11](http://www.statbank.dk/fvf11)

Table 235

Consumption of beverages and tobacco

	2005	2006	2007
	— mio. litres —		
Consumption of beer	574	554	542
Dutiable sales of lager equivalents	484	474	462
Estimated cross-border shopping (net)	90	80	80
Consumption of wine	173	172	178
Dutiable sales	164	162	168
Estimated cross-border shopping (net)	9	10	10
Consumption of spirits	33	25	27
Dutiable sales	28	23	25
Estimated cross-border shopping (net)	5	2	2
Consumption of alcoholic soft drinks	-	5	6
Dutiable sales	-	5	6
Estimated cross-border shopping (net)	-	-	-
	— avg. litres —		
Consumption of pure alcohol per capita	10.4	10.0	10.0
Consump. of pure alcohol per capita over 14 years	12.8	12.1	12.1
	— mio. units —		
Consumption of cigarettes, cigarillos, etc.	8 469	8 635	8 226
Dutiable sales	8 069	8 335	8 026
Estimated cross-border shopping (net)	400	300	200
	— units —		
Avg. consumption of cigarettes, cigarillos, etc.			
Per capita	1 564	1 589	1 510
Per capita over 14 years	1 925	1 924	1 832
	— tonnes —		
Consumption of smoking tobacco	1 497	1 332	1 208
Dutiable sales	1 122	1 032	908
Estimated cross-border shopping (net)	375	300	300

Note: Up to and including 2005, the statistics of dutiable sales of beer, wine and spirits also contain alcoholic soft drinks based on the type of alcohol in question. The figures on sales and thereby also consumption before and after 2006 are not strictly comparable. This applies especially to spirits.

For further information visit www.statbank.dk/alko2, [alko3](http://www.statbank.dk/alko3) and [alko4](http://www.statbank.dk/alko4)

Table 236

Average prices for foods

		1970	1980	1990	2000	2008
Amount		DKK in current prices				
Rye bread	1 kg	1.43	4.56	7.46	13.63	17.86
White bread	300 g	1.16	3.23	5.81	7.38	8.90
Rolls	1 stk	0.38	1.10	2.12	2.99	4.29
Danish pastry	1 stk	0.68	2.05	4.43	6.51	8.72
Dry cakes	1 stk	0.83	2.78	6.10	8.83	11.03
Minced beef	1 kg	15.09	43.44	77.73	98.71	129.92
Saddle of pork	1 kg	22.96	40.72	70.31	57.30	63.10
Sausages	1 kg	13.16	31.17	53.46	47.89	61.90
Liver paste	1 kg	11.80	22.34	31.18	30.33	41.14
Mettwurst	1 kg	11.61	23.70	35.73	38.27	49.72
Cod, medium-sized	1 kg	4.44	15.30	38.97	60.80	106.40
Plaice, medium-sized	1 kg	8.26	24.21	57.42	88.76	120.42
Full milk	1/1 l	1.29	3.49	6.39	6.19	8.36
Double cream	1/2 l	4.57	9.71	12.84	12.84	12.74
Cheese, 45%	1 kg	10.70	39.15	65.27	62.93	82.87
Eggs, large	10 stk	5.40	9.71	14.12	18.32	23.52
Butter, salted	1 kg	12.52	23.85	41.20	45.40	57.60
Apples	1 kg	3.42	7.58	12.06	13.13	15.85
Grapes	1 kg	7.77	23.55	33.67	28.82	34.93
Oranges	1 kg	3.10	7.96	11.27	11.43	12.99
Bananas	1 kg	3.62	9.02	13.46	14.53	16.26
Carrots	1 kg	2.60	7.28	8.34	8.58	8.30
Onions	1 kg	3.60	8.07	8.49	8.35	7.30
Tomatoes	1 kg	7.90	20.27	25.33	25.29	28.04
Cucumbers	1 kg	6.92	13.98	18.75	21.27	22.06
Cabbages	1 kg	1.35	2.88	4.75	5.14	7.97
Cauliflowers	1 kg	4.19	10.19	12.91	12.51	14.78
Potatoes, Danish	1 kg	1.18	2.82	4.49	7.11	10.09
Coffee	1 kg	26.55	60.97	51.87	61.25	60.44

Table 237

Net price index

	Jan.	Feb.	March	April	May	June	July	Aug.	Sept.	Oct.	Nov.	Dec.	Annual average	Percentage annual increase
	— 2000=100 —													
2000	98.1	98.9	99.5	99.7	100.1	100.4	100.0	99.8	100.6	100.8	101.0	100.9	100.0	3.1
2001	100.4	101.4	102.0	102.5	102.9	102.9	102.4	102.3	102.8	103.0	102.8	103.0	102.4	2.4
2002	103.1	104.1	104.7	105.1	105.2	105.1	104.8	104.8	105.5	105.7	105.6	105.6	104.9	2.5
2003	105.8	107.0	107.8	107.8	107.6	107.5	106.9	106.9	107.5	107.6	107.8	107.6	107.3	2.3
2004	107.4	108.3	108.9	109.0	109.4	109.1	108.7	108.4	109.0	109.4	109.1	108.9	108.8	1.4
2005	108.7	109.9	110.6	111.2	111.1	111.2	111.0	111.0	111.9	111.8	111.5	111.6	111.0	2.0
2006	111.3	112.4	112.8	113.4	113.5	113.7	113.5	113.5	113.8	113.6	113.6	113.6	113.2	2.0
2007	113.3	114.7	115.1	115.4	115.6	115.5	115.1	114.9	115.6	116.0	116.8	116.7	115.4	1.9
2008	117.1	118.6	119.1	119.5	120.1	120.4	120.2	120.3	120.7	120.5	120.2	119.8	119.7	3.7

For further information visit www.statbank.dk/pris7

Table 238**Consumer price index, annual average**

Year	Index	Per cent ¹	Year	Index	Per cent ¹	Year	Index	Per cent ¹	Year	Index	Per cent ¹
1900=100											
1901	100	-0.2	1931	178	-5.7	1961	555	4.5	1991	4 353	2.4
1902	101	1.3	1932	177	-0.7	1962	591	6.6	1992	4 445	2.1
1903	101	-0.2	1933	181	2.7	1963	622	5.2	1993	4 500	1.3
1904	102	1.3	1934	188	3.9	1964	645	3.6	1994	4 590	2.0
1905	102	-0.5	1935	196	3.8	1965	686	6.4	1995	4 686	2.1
1906	103	0.7	1936	198	1.2	1966	733	6.8	1996	4 785	2.1
1907	106	3.5	1937	205	3.6	1967	787	7.4	1997	4 890	2.2
1908	107	0.9	1938	207	1.2	1968	850	8.0	1998	4 980	1.8
1909	108	0.7	1939	213	2.9	1969	880	3.5	1999	5 104	2.5
1910	109	0.7	1940	266	24.4	1970	937	6.5	2000	5 253	2.9
1911	109	0.2	1941	305	14.7	1971	992	5.9	2001	5 377	2.4
1912	113	3.8	1942	315	3.5	1972	1 058	6.6	2002	5 507	2.4
1913	116	2.6	1943	318	0.8	1973	1 156	9.3	2003	5 622	2.1
1914	119	2.3	1944	325	2.2	1974	1 333	15.3	2004	5 687	1.2
1915	140	18.0	1945	328	1.1	1975	1 461	9.6	2005	5 790	1.8
1916	165	17.8	1946	326	-0.7	1976	1 592	9.0	2006	5 900	1.9
1917	191	15.8	1947	335	2.9	1977	1 769	11.1	2007	6 001	1.7
1918	223	16.8	1948	344	2.5	1978	1 946	10.0	2008	6 205	3.4
1919	264	18.6	1949	352	2.4	1979	2 133	9.6			
1920	315	19.3	1950	384	9.1	1980	2 396	12.3			
1921	268	-15.0	1951	429	11.7	1981	2 677	11.7			
1922	228	-15.0	1952	439	2.2	1982	2 948	10.1			
1923	237	4.2	1953	436	-0.5	1983	3 152	6.9			
1924	251	6.0	1954	444	1.9	1984	3 350	6.3			
1925	244	-2.8	1955	474	6.7	1985	3 507	4.7			
1926	207	-15.0	1956	498	5.0	1986	3 636	3.7			
1927	200	-3.4	1957	504	1.2	1987	3 782	4.0			
1928	199	-0.6	1958	509	0.9	1988	3 953	4.5			
1929	198	-0.6	1959	519	2.1	1989	4 142	4.8			
1930	188	-4.8	1960	531	2.3	1990	4 251	2.6			

¹ Percentage annual increase.For further information visit www.statbank.dk/pris8 and [pris9](http://www.statbank.dk/pris9)**Table 239****Consumer price index**

	Jan.	Feb.	March	April	May	June	July	Aug.	Sept.	Oct.	Nov.	Dec.	Annual average	Percentage annual increase
2000=100														
2000	98.3	98.9	99.6	99.7	100.1	100.4	100.0	99.9	100.6	100.8	100.9	100.8	100.0	2.9
2001	100.6	101.3	101.9	102.4	102.8	102.7	102.4	102.4	102.9	103.0	102.8	103.0	102.4	2.3
2002	103.1	103.8	104.5	104.9	105.0	105.0	104.7	104.8	105.4	105.6	105.6	105.6	104.8	2.4
2003	105.8	106.8	107.5	107.5	107.3	107.3	106.7	106.6	107.4	107.1	107.2	107.1	107.0	2.1
2004	107.0	107.8	108.3	108.4	108.7	108.5	108.1	107.9	108.6	108.9	108.6	108.4	108.3	1.2
2005	108.1	109.2	109.8	110.4	110.3	110.4	110.3	110.3	111.2	111.1	110.8	110.8	110.2	1.8
2006	110.4	111.5	111.9	112.4	112.5	112.8	112.5	112.5	112.9	112.8	112.7	112.8	112.3	1.9
2007	112.4	113.6	114.1	114.3	114.5	114.4	113.9	113.7	114.3	114.7	115.5	115.4	114.2	1.7
2008	115.7	117.1	117.6	118.0	118.4	118.8	118.4	118.6	119.1	118.9	118.6	118.2	118.1	3.4

For further information visit www.statbank.dk/pris12

Table 240

Consumer price index and its sub-indices

	Weights at Jan. 2006	2007 average	2008 average
	—2000=100—		
Consumer price index, total	100.00	114.2	118.1
Food and non-alcoholic beverages	12.47	115.1	123.8
Food	11.01	114.8	123.5
Non-alcoholic beverages	1.46	117.6	126.5
Alcoholic beverages and tobacco	4.49	101.1	105.5
Alcoholic beverages	2.31	95.2	101.6
Tobacco	2.18	107.7	109.7
Clothing and footwear	5.21	97.4	96.9
Clothing	4.29	94.1	93.4
Footwear	0.92	113.6	114.3
Housing, water, electricity, gas and other fuels	29.27	120.4	125.3
Actual and imputed rentals for housing	19.72	118.6	121.5
Maintenance and repair of the dwelling	0.89	117.7	122.4
Water supply and miscellaneous services relating to the dwelling	2.12	139.3	148.5
Electricity, gas and other fuels	6.54	121.5	130.9
Furnishings, household etc.	6.08	110.8	113.1
Furniture and furnishings, carpets etc.	2.14	105.8	107.9
Household textiles	0.50	107.5	108.8
Household appliances and repair of this	0.98	102.7	103.6
Glassware, tableware and household utensils	0.89	114.5	117.7
Tools and equipment for house and garden	0.56	107.7	109.3
Goods and services for routine household maintenance	1.01	130.2	134.9
Health	2.76	109.7	110.2
Medical products, appliances and equipment	1.31	94.7	92.2
Out-patient services	1.12	126.7	130.8
Hospital services	0.33	122.4	124.5
Transport	12.01	119.5	123.5
Purchase of vehicles	4.09	112.5	111.3
Operation of personal transport equipment	6.54	121.9	128.5
Transport services	1.38	126.7	133.4
Communication	2.18	87.6	87.7
Recreation and culture	10.25	102.9	103.4
Audio-visual, photographic and information processing equipment	2.26	63.0	57.6
Other major durables for recreation and culture	0.39	108.8	111.3
Other recreational items and equipment, gardens and pets	2.31	102.8	104.4
Recreational and cultural services	2.78	126.0	129.7
Newspapers, books and stationery	1.67	125.6	130.1
Package holidays	0.83	123.1	127.2
Education	0.81	152.7	159.1
Restaurants and hotels	4.63	118.8	124.6
Catering services	4.32	118.7	124.6
Accommodation services	0.32	123.3	127.1
Miscellaneous goods and services	9.83	122.9	125.5
Personal care	2.20	118.7	122.0
Personal effects n.e.c.	0.77	113.7	119.1
Social protection	2.15	119.1	122.8
Insurance	2.46	138.6	141.0
Financial services n.e.c.	1.60	123.4	120.6
Other services n.e.c.	0.64	123.7	130.6
Goods	52.68	108.3	112.4
Services	47.32	121.6	125.3

For further information visit www.statbank.dk/pris6

Table 241

Price index for sales of property. 2007

	One-family houses	Summer houses	Owner-occupied flats
	2006=100		
All Denmark	104.9	104.4	95.3
Landsdel København by	96.1	..	91.8
Landsdel Københavns omegn	95.3	..	91.4
Landsdel Nordsjælland	100.9	99.9	98.2
Landsdel Bornholm	112.2	112.4	..
Landsdel Vest- og Sydsjælland	107.4	103.2	106.0
Landsdel Fyn	111.1	113.7	105.2
Landsdel Syddanmark	110.6	105.2	109.1
Landsdel Østjylland	106.4	109.8	96.3
Landsdel Vestjylland	110.6	105.2	111.2
Region Hovedstaden	98.3	100.6	92.3
Region Sjælland	105.4	103.5	103.3
Bornholms Regionskommune	101.6	104.5	100.3
Region Syddanmark	110.6	107.3	107.1
Region Midtjylland	107.5	107.6	98.2
Region Nordjylland	108.2	104.8	104.6

For further information visit www.statbank.dk/ejen66

Table 242

Forced sales of real property

	2007	2008
Total	1 392	2 840
Agricultural properties	38	74
One-family houses	867	1 586
Owner-occupied flats	148	381
Holiday dwellings	94	215
Multi-family houses	39	124
Combined residential and business properties	68	152
Building sites	33	92
Business properties	57	136
Farm closures, etc.	48	80

For further information visit www.statbank.dk/tvang1

Table 243

Indices for price trends, ordinary free trade

	2000	2007
	index, 2006 = 100	
One-family houses	56.9	104.9
Residential properties with 2 flats	56.5	104.6
Residential properties with 3 flats	63.5	109.1
Residential properties with 4-8 flats	38.9	114.5
Residential properties with 9 flats and over	34.3	100.0
Residential and business properties	46.6	116.5
Business properties	72.9	114.6
Industrial properties and warehouses	83.0	115.1
Agricultural properties, total	51.5	114.0
Weekend cottages	45.3	104.4
Building sites under 2000 m ²	73.7	104.9
Owner-occupied flats	46.1	95.3

Note: Calculations are made thus: The ratio between the cash purchase price and the cash valuation is indexed. When the valuation is changed, the first quarter in the year of valuation is chained.

For further information visit www.statbank.dk/ejen6

Table 244

Assessment of real property

	General assessment 2006			General assessment 2007		
	Assessments	Property values	Land values	Assessments	Property values	Land values
	number	DKK mio.		number	DKK mio.	
All Denmark	2 031 495	4 871 017	1 244 762	2 062 245	5 602 332	1 527 594
One-family houses	1 153 321	1 701 139	492 976	1 165 264	2 270 259	712 498
Two- and three-family houses	26 780	55 542	14 512	26 495	75 806	19 842
Multi-dwelling houses and commercial properties with or without residence	96 882	1 234 340	264 981	96 996	1 228 997	264 243
Owner-occupied flats	206 636	292 322	40 506	217 475	356 181	56 150
Holiday dwellings on own land	192 181	222 894	63 878	193 838	273 218	93 143
Industrial properties and warehouses	18 625	190 622	35 497	18 769	190 099	35 460
Agricultural properties	91 832	452 628	120 434	90 400	451 916	119 650
Nurseries and horticultural properties, fruit orchards, etc.	2 084	7 879	1 137	2 067	7 791	1 126
Forests and orchards separately assessed	5 385	22 613	6 115	5 488	25 207	6 696
Building sites	108 925	81 366	63 250	114 691	92 632	73 073
Government and municipal properties	13 519	258 788	64 463	13 549	266 476	65 600
Other assessed properties	115 325	350 884	77 014	117 213	363 750	80 112

Note: Due to rounding, comparison of individual figures will not always result in the totals stated.

Source: Central Tax Administration.

For further information visit www.statbank.dk/06

Table 245

Sales of real property in ordinary free trade

	Total number of sales		Average price per property DKK thousands		As percentage of public assessment ¹	
	2006	2007	2006	2007	2006	2007
One-family houses						
All Denmark	52 564	51 686	1 748	1 819	132.0	138.5
Region Hovedstaden	8 782	8 596	3 382	3 279	138.1	135.8
Region Sjælland	10 399	9 134	1 727	1 819	129.0	136.0
Region Syddanmark	13 522	13 833	1 296	1 422	128.4	142.1
Region Midtjylland	12 843	13 011	1 490	1 613	132.5	142.4
Region Nordjylland	7 018	7 112	1 099	1 196	125.0	135.3
Province København by	1 085	1 110	3 917	3 743	139.6	134.1
Province Københavns Omegn	2 793	2 968	3 921	3 549	137.6	131.2
Province Nordsjælland	3 995	3 662	3 440	3 455	138.7	139.9
Province Bornholm	909	856	886	1 000	129.3	145.0
Province Østsjælland	2 118	1 892	2 865	2 890	137.0	139.2
Province Vest- og Sydsjælland	8 281	7 242	1 437	1 538	125.2	134.4
Province Fyn	5 624	5 432	1 365	1 510	133.2	148.0
Province Sydjylland	7 898	8 401	1 246	1 364	124.8	138.1
Province Østjylland	7 607	7 330	1 770	1 930	137.1	145.8
Province Vestjylland	5 236	5 681	1 087	1 208	122.8	135.8
Province Nordjylland	7 018	7 112	1 099	1 196	125.0	135.3
Owner-occupied flats						
All Denmark	19 341	18 539	1 764	1 675	124.6	118.7
Region Hovedstaden	9 938	9 883	2 256	2 035	125.5	115.9
Region Sjælland	1 928	1 728	1 273	1 265	121.1	125.1
Region Syddanmark	2 194	2 058	1 086	1 121	125.6	134.5
Region Midtjylland	3 629	3 447	1 295	1 358	120.0	117.8
Region Nordjylland	1 652	1 423	1 093	1 049	128.8	134.7
Province København by	5 686	5 962	2 471	2 110	123.3	113.2
Province Københavns Omegn	2 525	2 357	1 957	1 856	129.1	118.0
Province Nordsjælland	1 624	1 499	1 976	1 989	131.1	128.6
Province Bornholm	103	65	712	760	133.4	141.5
Province Østsjælland	714	693	1 727	1 694	126.1	126.5
Province Vest- og Sydsjælland	1 214	1 035	1 030	1 040	116.9	123.9
Province Fyn	962	924	1 161	1 181	130.3	137.1
Province Sydjylland	1 232	1 134	1 020	1 073	121.2	132.3
Province Østjylland	2 915	2 687	1 403	1 469	120.2	115.7
Province Vestjylland	714	760	872	930	118.9	132.2
Province Nordjylland	1 652	1 423	1 093	1 049	128.8	134.7
Other properties:						
Residential properties with 2 flats	1 692	1 606	1 796	1 811	99.8	104.3
Residential properties with 3 flats	390	418	1 742	1 826	106.2	115.8
Residential properties with 4-8 flats	745	708	4 311	4 098	111.8	128.1
Residential properties with 9 flats and over	447	307	26 849	19 994	111.2	111.1
Residential and business properties	3 004	2 694	5 524	5 317	117.6	137.0
Business properties	1 842	1 812	9 391	10 172	115.8	132.7
Industrial properties and warehouses	1 567	1 378	10 148	10 914	108.1	124.4
Agricultural properties	4 192	4 011	197	229	123.1	140.4
Weekend cottages	8 900	7 624	1 344	1 428	122.8	128.2
Grounds under 2,000 m ²	11 894	9 394	484	400	130.9	137.2
Grounds over 2,000 m ²	2 623	1 893	106	126	120.0	92.3

Note: For land, average prices are per m², for agriculture, average prices are per hectare, and for other categories, prices are per item.

¹For 2006 and 2007 is used 2006-tax assessment.

Source: Central Tax Administration.

For further information visit www.statbank.dk/ejen88