

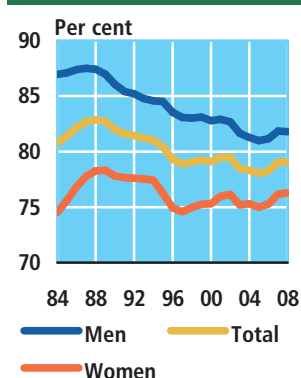
Labour market

1. The Danish labour market

Men and women's activity rate – the difference decreases

Labour market statistics are based on the basic concepts adopted by the International Labour Organization (ILO), according to which the population is divided into three groups: The employed, the unemployed (which combined constitute the labour force) and those outside the labour force.

Figure 1
Activity rate of
16-64-year-olds



For further information visit
www.statbank.dk/ras1f1.

Developments from 1981 to 2008 show significant differences between men and women. The part of the population that is of working age (16-64-year-olds) has increased by 9.5 per cent for men and 9.1 per cent for women following the general population change.

The actual labour force has increased by 1.7 per cent for men and 14.7 per cent for women in the same period. In other words, there has generally speaking been an increase in the female part of the labour force, while there – generally speaking – has been a decrease in the male part of the labour force.

Women's activity rate increased primarily in the 1980s, while that of men decreased. In the 1990s, in which Denmark had a period of recession, the activity rate of both men and women decreased during most of the period.

However, the fall in women's activity rate stopped in 1997, while the activity rate of men continued to fall. The activity rate is the labour force's proportion of the total population.

Immigrants and their descendants in the labour market

The number of immigrants and their descendants of working age has increased from 108,000 to 358,000 in the period 1981-2008. Especially, the number of immigrants and their descendants from non-western countries has increased.

There were 36,000 immigrants and descendants from non-western countries aged 16-64 in 1981, while the figure was 236,000 in 2008.

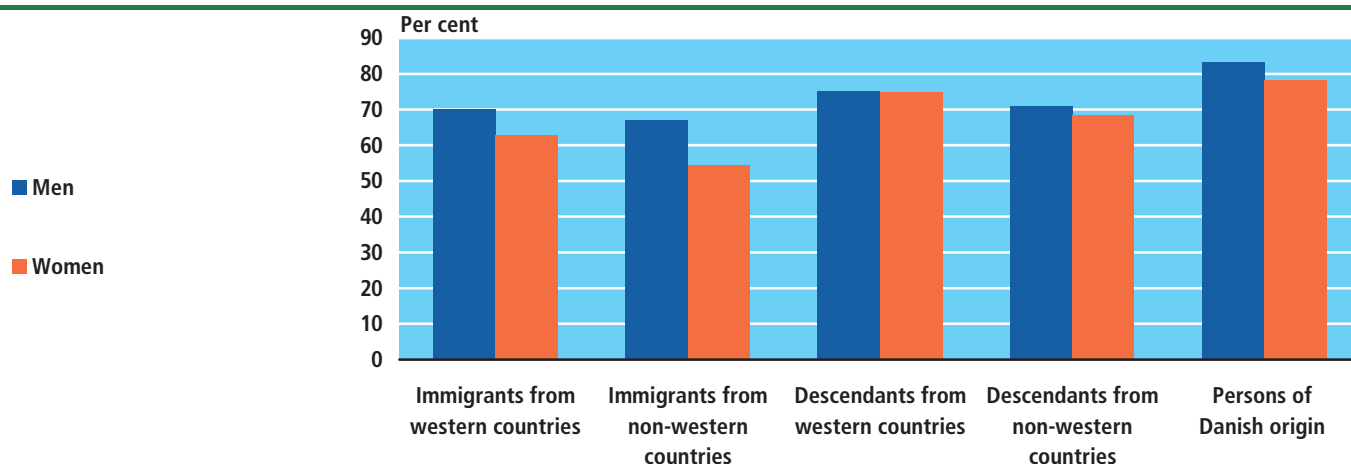
Immigrants' activity rate is lower than that of persons of Danish origin. Immigrants from non-western countries account for the lowest activity rate of 60.7 per cent in 2008. Simultaneously, the difference between men's and women's activity rate is relatively large for immigrants from non-western countries.

Descendants from non-western countries have a higher activity rate (70.0 per cent) than immigrants from non-western countries, and the difference between men's and women's activity rate is smaller than that of immigrants.

The group of descendants from non-western countries mainly consists of persons who are between 16 and 30 years old, for which reason a substantial proportion of the group still attend an education. Consequently it is not possible to draw clear conclusions regarding their labour market integration.

Figure 2

Activity rate of immigrants and their descendants. 2008



For further information visit www.statbank.dk/ras1f1.

2. Unemployment, persons not in ordinary employment and persons receiving early retirement pay

Historically low rate of unemployment in 2008

In 2008 the number of unemployed decreased to 51,300 persons, converted into full-time. This is equivalent to 1.8 per cent of the labour force which makes the unemployment rate in 2008 the lowest in 34 years.

However, 2008 saw a sharp reversal in the number of unemployed persons and from the low point of 47,100 full-time persons in June 2008 (seasonally adjusted) unemployment increased by 13,500 persons up until December 2008 taking seasonal adjustment into account.

Unemployment is now higher among men than among women

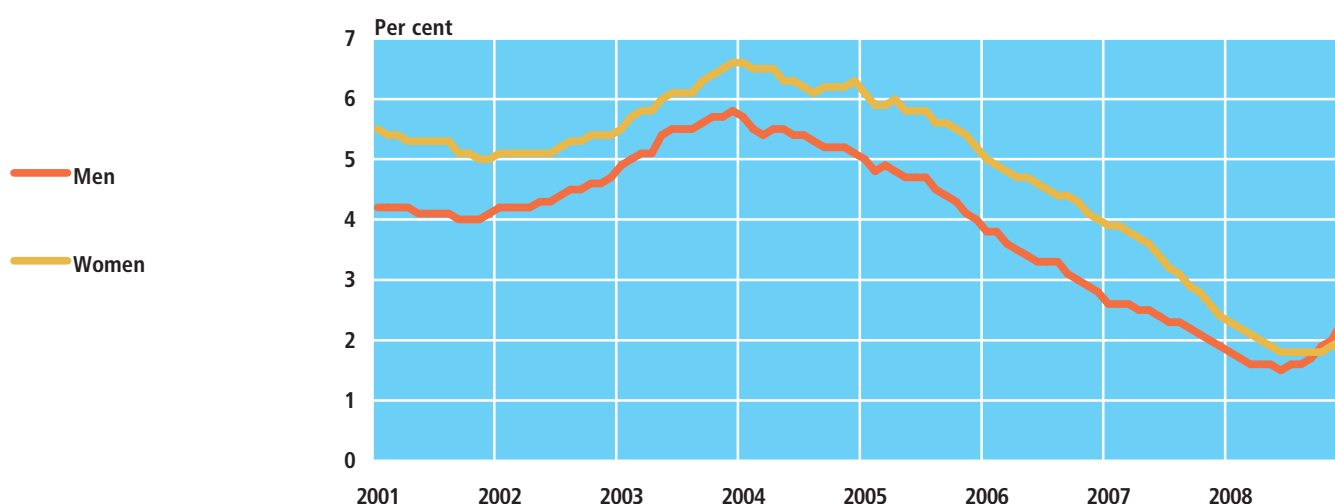
The increase in the seasonally adjusted unemployment since the middle of 2008 is mainly accounted for by men. In per cent of the labour force, the seasonally adjusted unemployment for men increased by 0.8 per cent during the last six months of 2008, whereas the corresponding increase for women was only 0.2 percentage point.

These differences imply that the seasonally adjusted unemployment (in per cent of the labour force) is now higher among men than among women. In a historical perspective, women have predominately accounted for the highest unemployment rate.

We have to go back as far as 1976 in order to find a similar situation where unemployment (in per cent of the labour force) was higher among men than among women.

Figure 3

Seasonally adjusted unemployment in per cent of the labour force



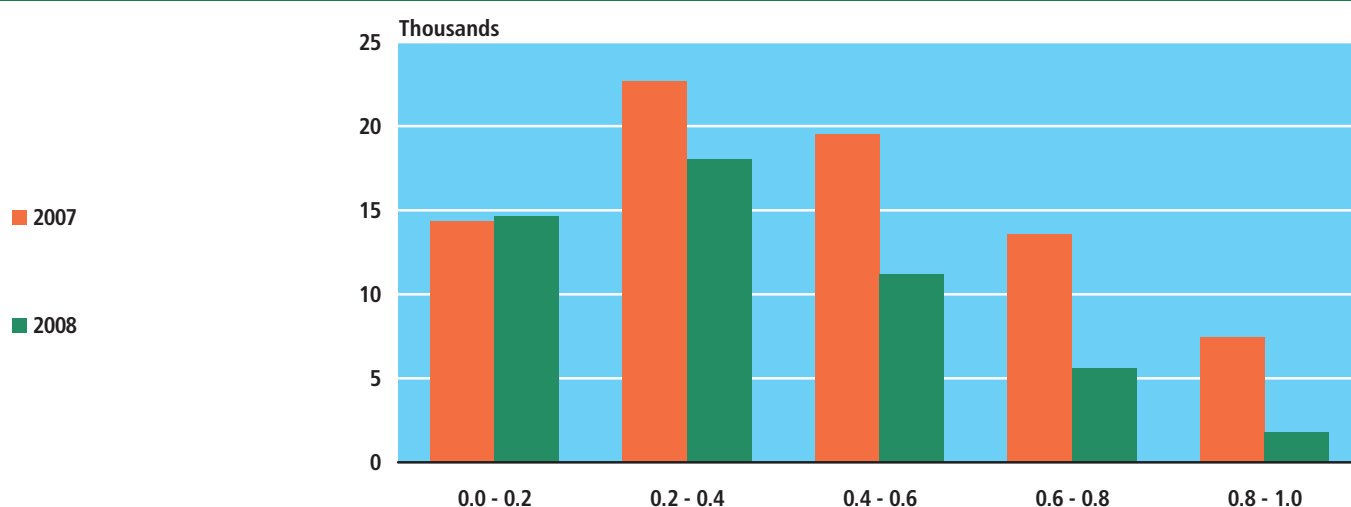
For further information visit www.statbank.dk/aus01.

Low number of long-term unemployed persons

Only a relatively low number of the 51,300 full-time unemployed persons in 2008 experienced long-term unemployment. In 2008, 1,830 full-time persons were unemployed for more than 292 days, equivalent to an unemployment degree of at least 80 per cent of the year. In 2008 the number of long-term unemployed persons made up 3.6 per cent of the total unemployment rate, while the corresponding share was 9.6 per cent in 2007. It should be noted that the periods in which a person participated in job activation are excluded from the delimitation of long-term unemployment.

Figure 4

Full-time unemployed persons by degree of unemployment



For further information visit www.statbank.dk/auaar02.

Labour market

Figure 5
Full-time participants by
type of benefit. 2008



Persons who are not in ordinary employment

In 2008, the statistics on *persons who are not in ordinary employment* cover unemployed persons, participants in subsidized employment receiving pay and participants who are temporarily outside the labour force (subsidized employment without pay, education measures, leave from unemployment, etc.).

In the light of this delimitation, 256,100 full-time persons were not in ordinary employment in 2008. Of whom 31.6 per cent were in subsidized employment, 20.2 per cent were registered unemployed persons, 16.4 per cent participated in measures concerning guidance activities or special activities upgrading skills, while other recipients of benefits made up 31.8 per cent.

Subsidized employment and changes in the number of persons in flex jobs

As mentioned above, subsidized employment make up 31.6 per cent of the total number of persons who are not in ordinary employment in 2008. This is equivalent to 81,000 full-time persons, of whom 49,600 full-time persons are in flex jobs.

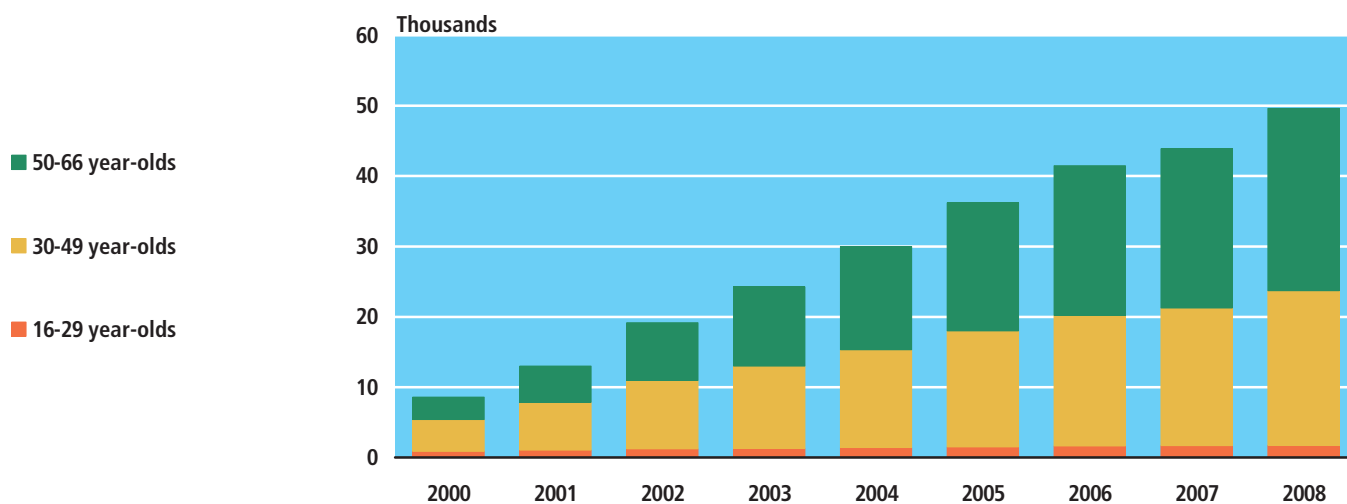
The remaining number of 31,400 full-time persons comprise adult apprentices, light jobs, business in-service training, employment subject to wage subsidies, etc.

The number of full-time persons in flex jobs has, as stated above, increased steadily since 2000, from a level of 8,600 to 49,600 persons. This increase is attributed to all age groups, but the 50-66 year-olds accounted for the largest increase.

In 2000, persons aged 50-66 made up 37 per cent of the total number of full-time participants in flex jobs, while this share had increased to 52 per cent in 2008.

Figure 6

Full-time participants in flex jobs by age

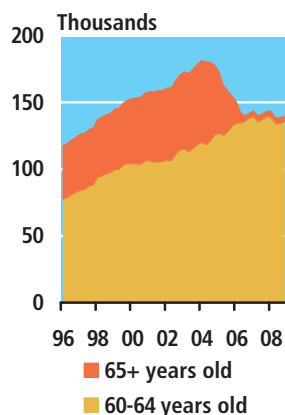


Changes in the number of persons receiving early retirement pay

The number of persons receiving early retirement pay increased steadily during the period from 1996 to 2004, when the number reached just over 180,000 full-time persons. By the end of 2008 (4th quarter), the number of persons receiving early retirement pay decreased to 139,600 full-time persons and is consequently

Labour market

Figure 7
Number of persons receiving early retirement pay



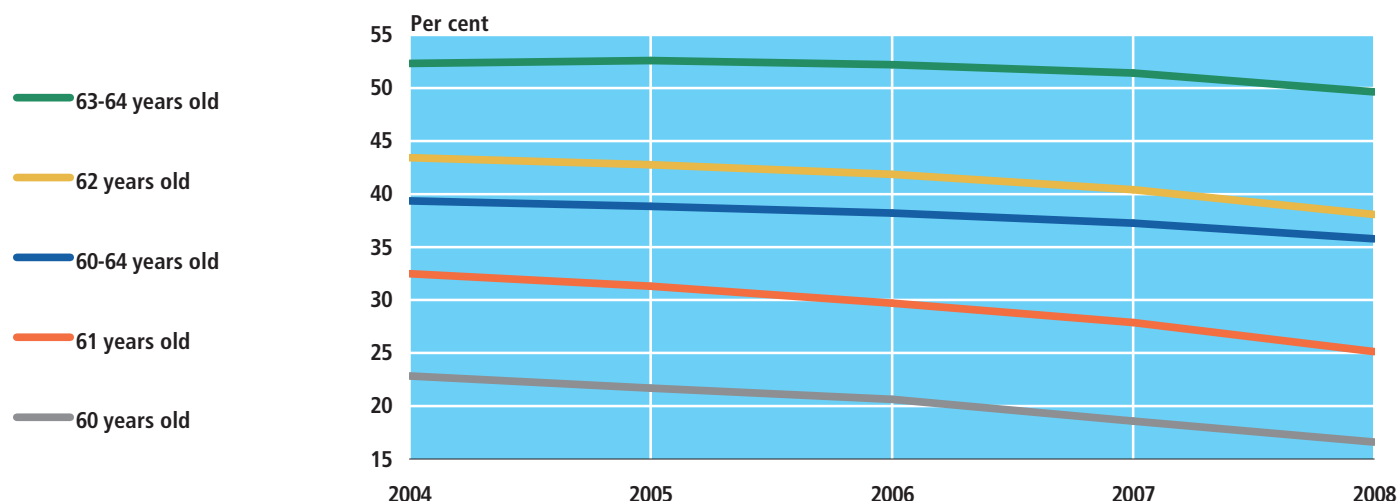
41,800 lower than the “highest point” in 2004. The fall in the number of persons receiving early retirement pay is particularly reflected in the reduction of the retirement age from 67 to 65 years for persons born after 1 July 1939. The number of persons receiving early retirement pay has more or less remained steady throughout 2007 and 2008.

Seen in the context of the relatively sharp increase in the number of persons who have reached the early retirement age (60-64 years) during recent years, the stabilization of the number of persons receiving early retirement pay indicates that a falling share of the persons aged 60-64 is receiving early retirement pay. From 2004 to 2008, this share decreased from 39.3 per cent to 35.8 per cent.

It is especially the share of 60-62 year-olds who accounts for the fall in the number of persons who are receiving early retirement pay. For example, 22.8 per cent of the persons aged 60 (converted into full-time) received early retirement pay in the 4th quarter of 2004, while this share had fallen to 16.6 per cent in the 4th quarter of 2008 – i.e. a fall of 6.2 percentage points.

Figure 8

Share of the population receiving early retirement pay by age



Note: Shares are estimated as the number of full-time persons receiving early retirement pay in the 4th quarter in relation to the population number at the end of the year (in each age group).

3. Commuting

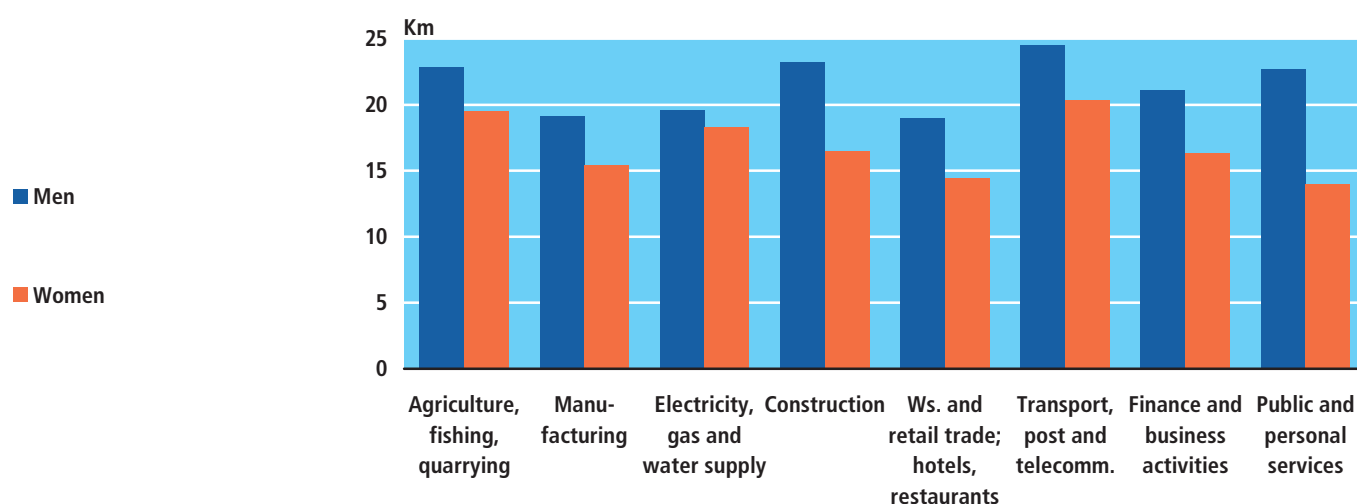
Longer commuting distances

In 2007, every Dane travelled, on average, a distance of 18.1 km to and from the home and work. Compared to 2005, this is 0.6 km longer and 1.0 km longer in relation to 2003.

On average, men are working 21.2 km away from their home, while women only need to travel 14.8 km to their job. This implies that the average commuting distance between men and women is 6.4 km, which is slightly shorter than in 2003, when it was 6.6 km.

Figure 9

Commuting distances. 2007



Note: Commuting distances are the shortest distance between the residence and the workplace for employees not living and working on the same address.

The commuting distance is calculated as the shortest road distance between the home and work. The statistics cover all employed persons who are not living and working at the same address. Commuting usually involves a daily journey between the home and work, but in some cases the journey takes place at more irregular intervals.

Commuters from Copenhagen account for the shortest distance – commuters from Vest- and Sydsjælland account for the longest distance

People living in Vest- and Sydsjælland account for the longest commuting distance to their work, i.e. 25.9 km. In addition to employed persons living in Vest- and Sydsjælland, employed persons living in Østsjælland and in Bornholm have an average commuting distance of more than 20 km.

However, the commuting distance of employed persons living in København By and Københavns Omegn is only 12.1 km and 12.2 km, respectively, to their work.

Considerable differences among industries

There are considerable differences with respect to how far a person commutes from the home and work, which depends on the industry in which the person is employed. Employed persons within *transport, post and telecommunications* commute on average 23.3 km, followed by *construction* with 22.6 km and *agriculture, fishing and quarrying* accounting for 22.0 km.

The shortest average commuting distance of 16.7 km is accounted for by persons within *public and personal services*. But this industry also accounts for the greatest difference in the commuting distance between the sexes: Men employed within *public and personal services* commute on average 8.7 km longer than women to their work. The smallest difference is seen within *electricity, gas and water supply* where men's commuting distance is, on average, 1.3 km longer than that of women.

4. Earnings

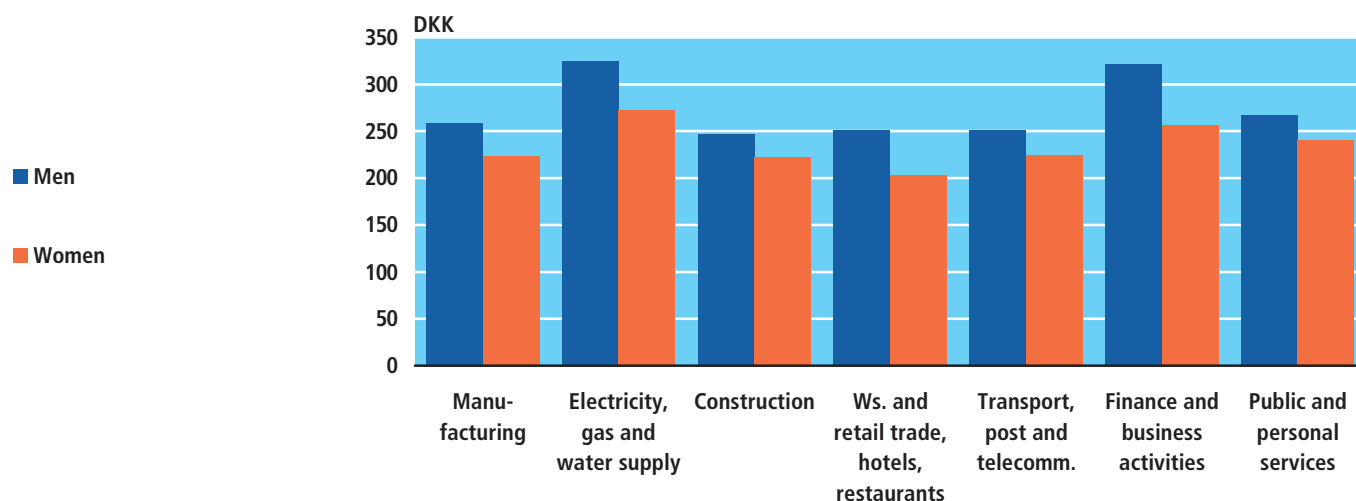
Men in the financial sector account for the highest earnings

Women earn less than men regardless of their business, even when employed in the same industry. The greatest difference between men and women's earnings is seen in *finance and business activities* with 20.5 per cent and the smallest occurs in *construction* with 9.8 per cent.

However, it is important to be careful in drawing firm conclusions regarding the gender pay gap. There are great differences in the types of jobs men and women occupy in the different industries. The number of men employed in managerial positions is generally higher, compared to women.

Figure 10

Hourly earnings for employees in the private sector. 2007



For further information visit www.statbank.dk/lon04.

5. Hours worked

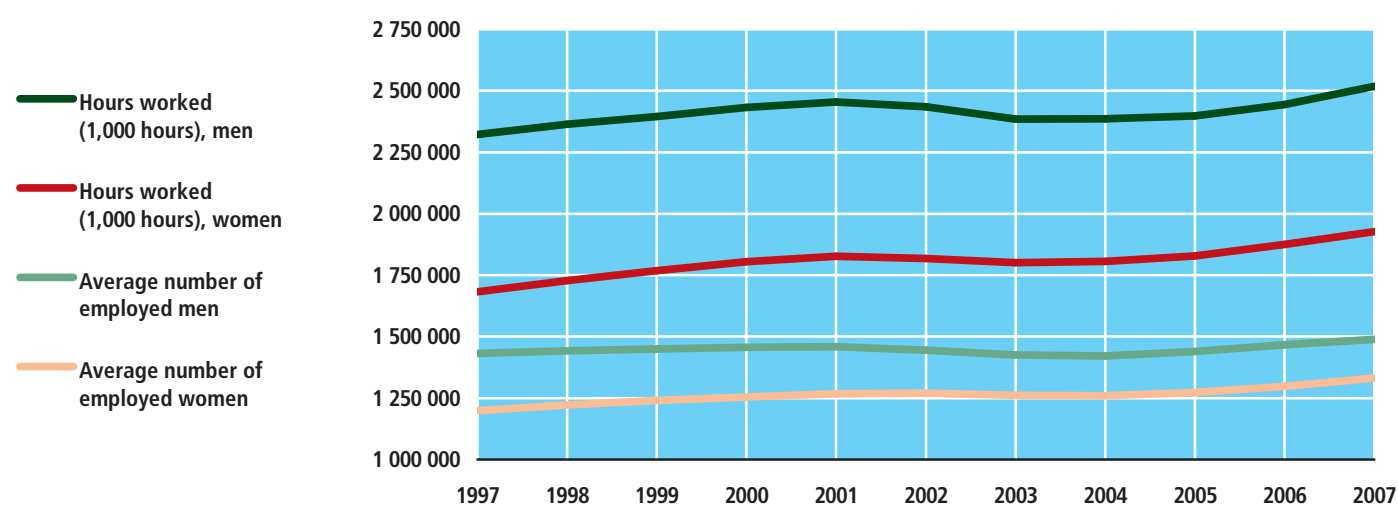
From 2006 to 2007, the number of hours worked by employed persons increased by 2.9 per cent. During the same period, the number of persons employed increased by 2.0 per cent. Consequently, an employed person worked, on average, slightly more hours in 2007 than in 2006.

Especially part-time employed persons, defined as persons working less than 27 hours per week, contributed to the overall increase in the number of hours worked, as part-time employees account for 20 per cent of all persons in employment, but accounted for 26 per cent of the increase in the number of hours worked from 2006 to 2007.

Labour market

Figure 11

Hours worked and average employment



For further information visit www.statbank.dk/atr1.

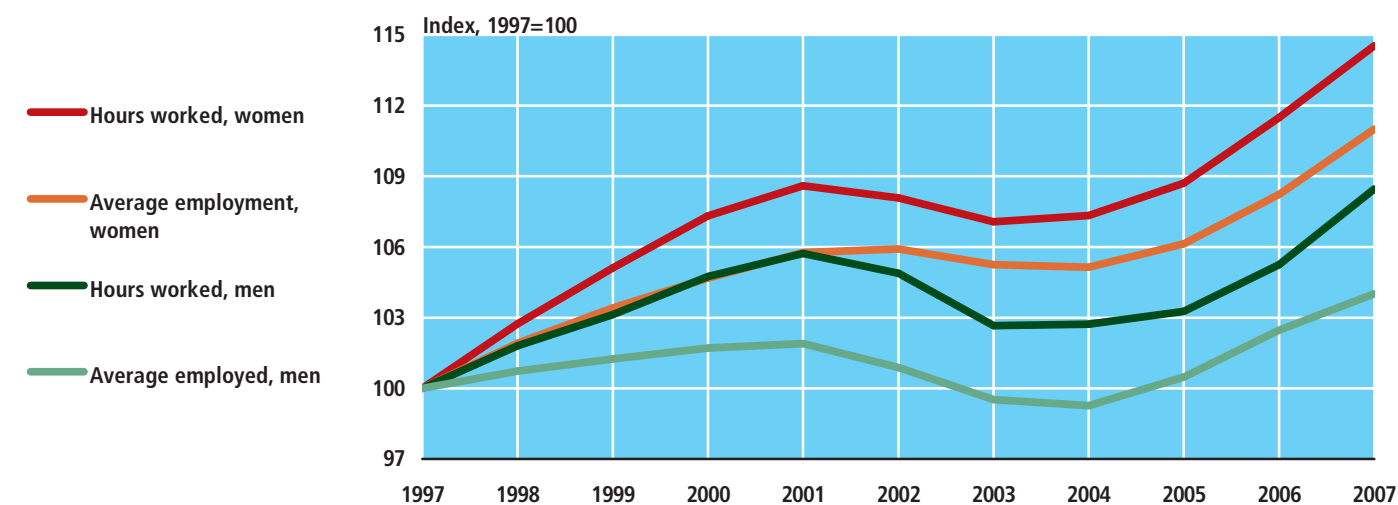
Particularly men worked more hours in 2007. From 2006 to 2007, the number of hours worked increased by 3.1 per cent for men while the employment increased by 1.5 per cent.

Women also worked more hours, but the increase in the hours worked by 2.7 per cent for women is predominantly ascribed to the increase in employment by 2.6 per cent.

One of the most important reasons why men accounted for the highest increase in the number of hours worked was due to the favourable economic trends for the male-dominated industry *construction*.

Figure 12

Hours worked and employment



For further information visit www.statbank.dk/atr1.

Seen in a longer perspective, it is women who have attributed to the largest increase in the number of hours worked. During the period 1997 to 2007, the number of hours worked by women increased by 14.5 per cent, while the number of hours worked by men increased by 8.5 per cent during the same period.

However, the increase in the number of hours worked is mainly due to an increase in employment by 11.0 per cent for women while the corresponding increase in employment for men was only 4.0 per cent.

In 2007, 23.8 per cent of women and 17.0 per cent of men were working part-time. In 1997, the corresponding percentages were 26.0 per cent for women and 15.4 per cent for men.

6. Absence

Women are more absent due to sickness than men

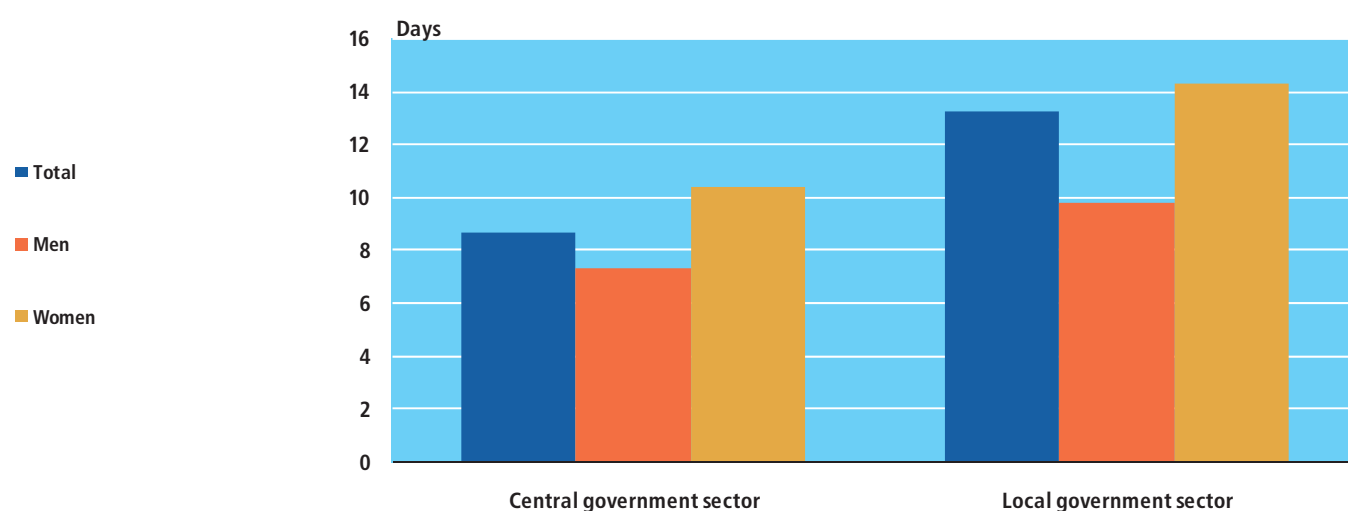
The employees in the regions and the municipalities were on average absent from work 13.3 days due to sickness in 2007. In the central government sector, employees were, on average, absent 8.6 days due to sickness.

In both sectors women are more absent from work due to sickness than men are, and therefore the different absence figures between the sectors are partly due to the different proportions of men and women in the sectors.

Within regions and municipalities 78 per cent of the employees are women. The proportion of women is 43 per cent in the central government sector.

Figure 13

Absence caused by own sickness. 2007 – corrected



For further information visit www.statbank.dk/fra05.

7. A European perspective

Denmark has the highest employment rate in the European Union

With 77.1 per cent of the population in the age 15-64 years in employment, Denmark has the highest employment rate in the European Union according to the labour force survey.

The Labour Force Survey collects data according to the same guidelines and with similar methods in all European Union countries. Therefore information from the Danish Labour Force Survey is directly comparable with information from similar surveys in other European Union countries.

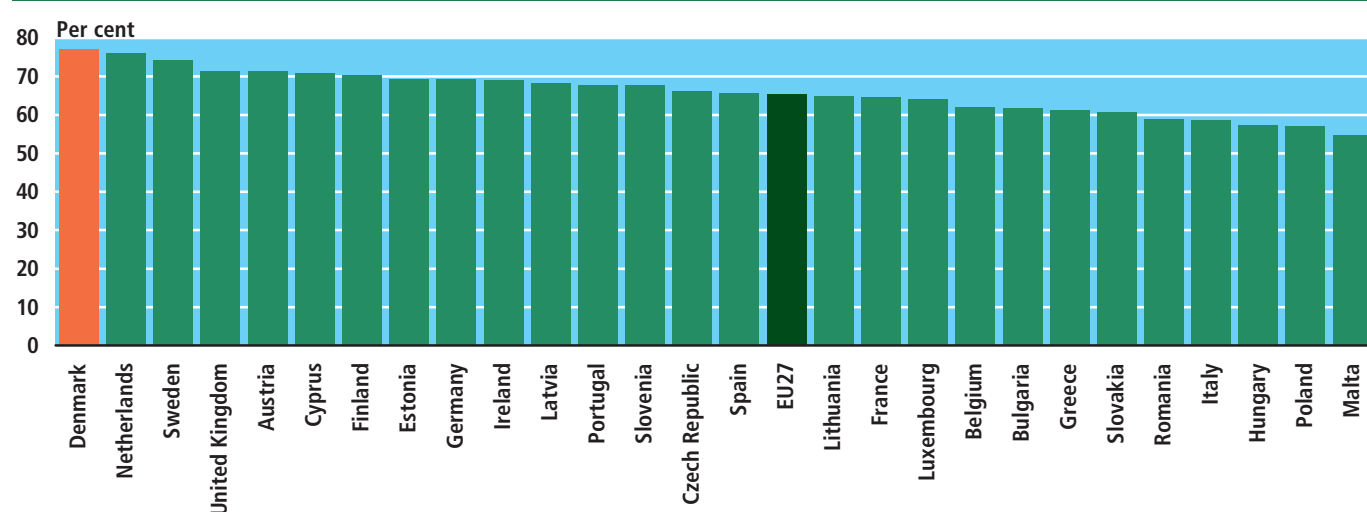
In 2007 the Danish employment rate was above the European Union average of 65.4 per cent – ahead of the Netherlands and Sweden, where the employment rates are 76.0 per cent and 74.2 per cent, respectively.

Poland and Malta have the lowest employment rates in the European Union at 57.0 per cent and 54.6 per cent, respectively.

The employment rate is defined as the percentage of employed persons in a specific age group in the population.

The chapter *International statistics* contains further employment figures for a wider range of countries.

Figure 14 Employment rate in the EU27. 2007



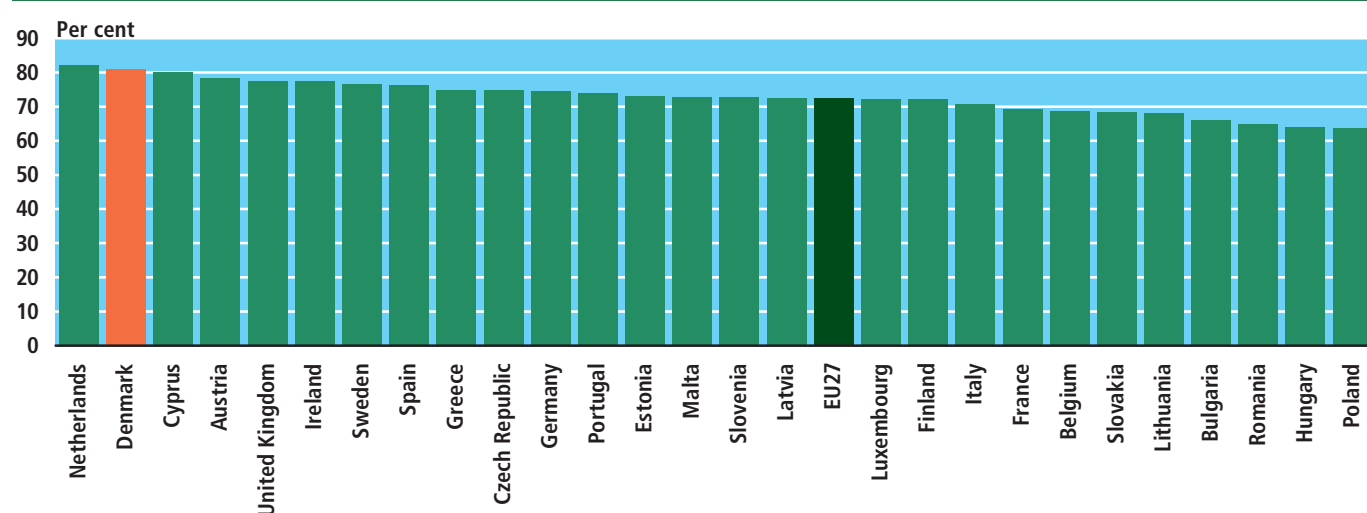
Source: Eurostat.

The Netherlands has the highest employment rate for men

With 82.2 per cent the Netherlands has the highest employment rate for men among the 27 countries in the European Union. Denmark is second at 81.0 per cent followed by Cyprus where 80.0 per cent of the men are employed.

With 64.0 per cent and 63.6 per cent, respectively, Hungary and Poland have the lowest employment rates for men in the European Union. Latvia is, with 72.5 per cent, exactly on the EU average.

Figure 15 Employment rate in the EU27, men. 2007

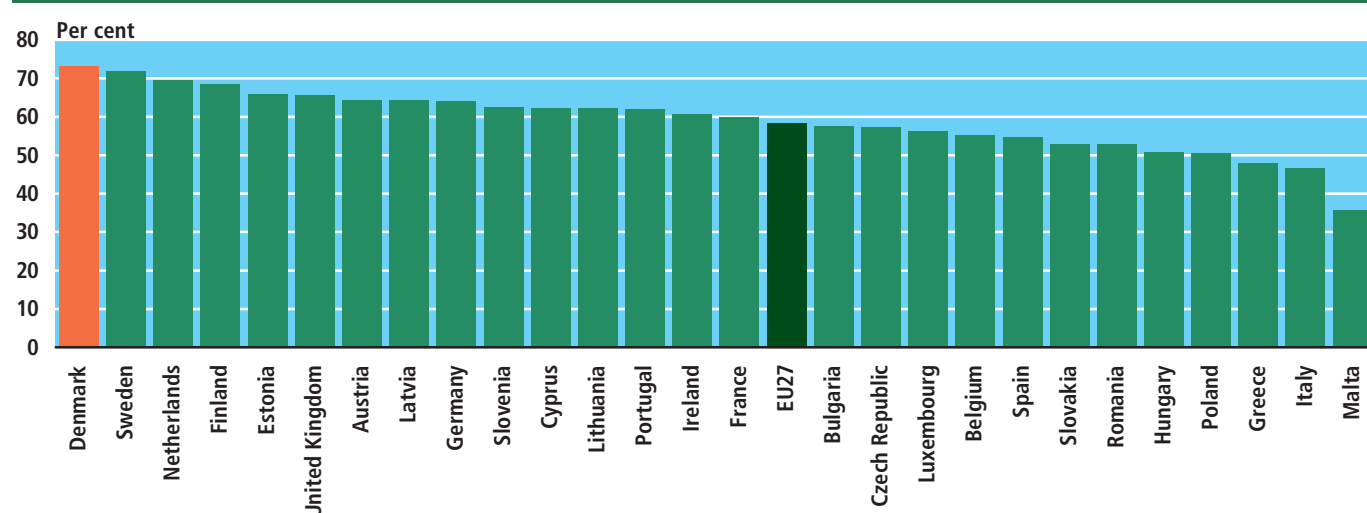


Source: Eurostat.

Denmark has the highest employment rate for women

Since 2004 Denmark has had the highest employment rate for women in the European Union. With 73.2 per cent of the women in employment this was also the case in 2007.

Figure 16 Employment rate in the EU27, women. 2007



Source: Eurostat.

Denmark is ahead of Sweden and the Netherlands where female employment rates are 71.8 per cent and 69.6 per cent respectively. The EU average is 58.3 per cent.

At 46.6 per cent and 35.7 per cent, Italy and Malta have the lowest employment rates for women in the European Union.

Denmark has the second lowest unemployment rate in the EU

Among the 27 countries of the European Union, only the Netherlands has a lower unemployment rate than Denmark.

The unemployment rate among those aged 15-64 years in 2007 was 3.8 per cent in Denmark whereas it was 3.2 per cent in the Netherlands. Denmark is followed by Cyprus, where the unemployment rate is 4 per cent.

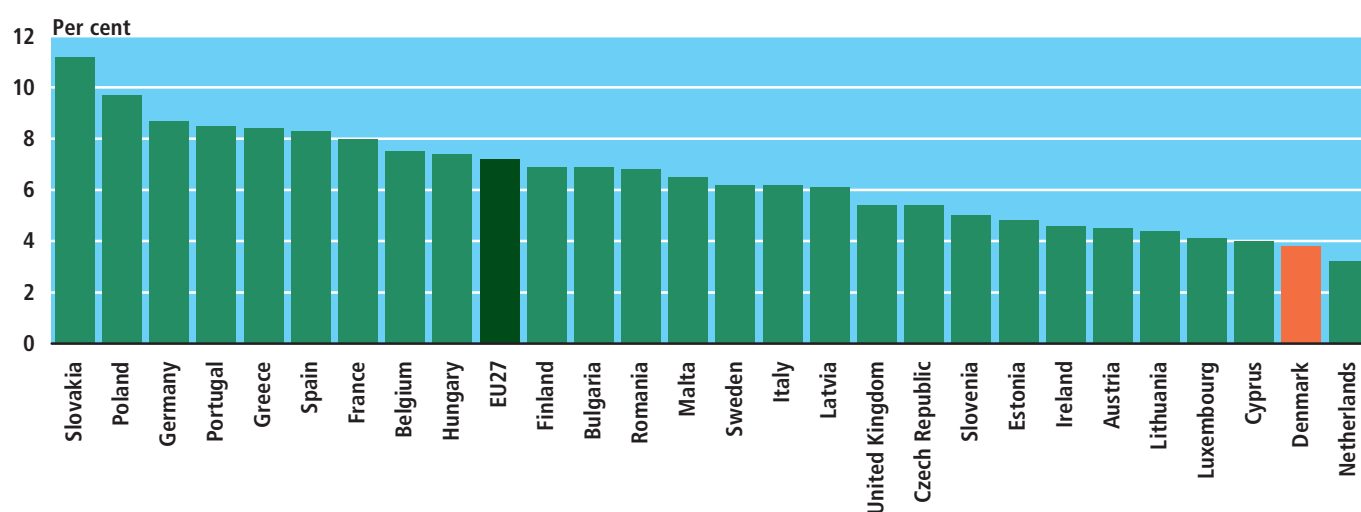
Slovakia and Poland have the highest unemployment rates in the EU with 11.2 per cent and 9.7 per cent, respectively. The EU average unemployment rate is 7.2 per cent.

The unemployed are considered to be those without a job who wish to get a job, who have looked for a job within the last four weeks and who can begin a new job within two weeks.

The chapter *International statistics* contains further unemployment figures for a wider range of countries.

Figure 17

Unemployment rate in the EU27. Age 15-64 years. 2007



Source: Eurostat.

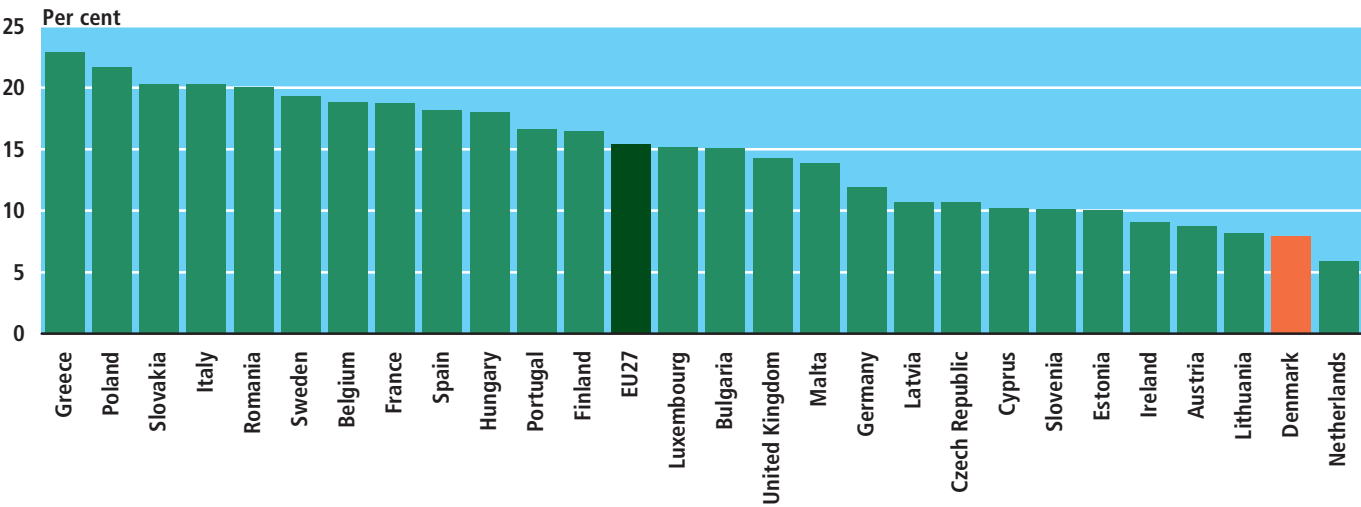
Youth unemployment in the EU

Considering the youth unemployment rate in the European Union, defined as the unemployment rate for those aged 15-24 years, Denmark is also placed relatively low at 7.9 per cent. Again, it is the Netherlands who have the lowest unemployment rate at 5.9 per cent.

In our neighbouring country Sweden the youth unemployment rate is surprisingly high at 19.3 per cent while the unemployment rate for those aged 15-64 years is 6.2 per cent.

Greece and Poland has the highest youth unemployment rates in the European Union with 22.9 per cent and 21.7 per cent, respectively. The EU average is 15.4 per cent.

Figure 18 Youth unemployment rate. Age 15-24 years. 2007



Source: Eurostat.

Table 113

Population by industry in the censuses

	1834	1840	1845	1855	1860	1870	1880	1890	1901
	thousands people								
Total population	1 224	1 283	1 350	1 500	1 601	1 785	1 969	2 172	2 450
Agriculture	704	720	744	816	853	934	1 006	997	1 015
Fishing and shipping	34	35	37	40	45	47	54	59	73
Trades and industry	261	302	334	389	423	460	511	606	721
Trade and sales	51	56	60	78	95	121	152	214	277
Non-material activities	81	82	83	86	92	106	132	159	194
Property	48	48	52	58	58	69	81	92	113
Assistance	45	41	40	33	35	48	33	45	56
	per cent								
Total population	100	100	100	100	100	100	100	100	100
Agriculture	58	56	55	54	53	52	51	46	41
Fishing and shipping	3	3	3	3	3	3	3	3	3
Trades and industry	21	24	25	26	26	26	26	28	29
Trade and sales	4	4	4	5	6	7	8	10	11
Non-material activities	7	6	6	6	6	6	7	7	8
Property	4	4	4	4	4	4	4	4	5
Assistance	3	3	3	2	2	3	2	2	2

Note: Grouping by industry is per the census in 1890. Children living at home and married women, as well as people who are employed as domestic help are placed in the same industry group as the head of the household. The total population indicates the number of people in the region that belongs to Denmark proper at the time of the census. Due to rounding up/down, the totals are not precise.

Table 114

Population by industry in the censuses

	1901	1906	1911	1930	1940	1950	1960	1965	1970
	thousands people								
Total population	2 450	2 589	2 757	3 551	3 844	4 281	4 585	4 768	4 938
Agriculture, etc.	975	999	1 041	1 127	1 066	1 012	861	703	495
Manufacturing	721	737	788	1 091	1 285	1 492	1 674	1 776	1 758
Trade and sales	238	291	310	421	484	557	631	661	681
Transport	126	138	162	236	249	306	335	331	330
Administration and professions	118	135	141	223	268	363	480	605	770
Industry not stated	53	68	73	86	73	63	31	43	69
Pension, property, assistance	219	220	241	367	418	487	574	649	834
	per cent								
Total population	100	100	100	100	100	100	100	100	100
Agriculture, etc.	40	39	38	32	28	24	19	15	10
Manufacturing	29	28	29	31	33	35	37	37	36
Trade and sales	10	11	11	12	13	13	14	14	14
Transport	5	5	6	7	7	7	7	7	7
Administration and professions	5	5	5	6	7	8	10	13	16
Industry not stated	2	3	3	2	2	1	1	1	1
Pension, property, assistance	9	8	9	10	11	11	13	14	17

Note: Children living at home and married women with no commercial employment as well as domestic help are placed in the same industry group as the head of the household. Grouping by occupation is per the census in 1950. 1901-1911 is excl. North Schleswig. Due to rounding up/down, the totals are not precise.

Source: Lars Bugge Andersen, et al. *Erhvervsstrukturens udvikling i Danmark 1901-1976*.

Table 115

Employed persons by industry

	1981	1990	2000	2008
	thousands			
Total	2 552	2 674	2 759	2 858
Agriculture, fishing, quarrying	200	157	108	89
Manufacturing	481	504	464	397
Electricity, gas and water supply	16	19	16	14
Construction	180	167	168	194
Wholesale and retail trade, hotels, restaurants	436	461	503	537
Transport, post and telecommunications	179	182	183	174
Finance and business activities	176	282	344	450
Public and personal services	871	886	962	991
Activity not stated	12	15	11	12

For further information visit www.statbank.dk/ras9 and [rasb1x](http://www.statbank.dk/rasb1x)

Table 116

Employed persons by sex, industry and socio-economic status. 2008

	Self-employed persons	Assisting spouses	Salaried employees						Salaried employees total	Employment total
			Top managers	Upper levels	Intermediate levels	Basic levels	Other	Not further specified		
	thousands									
Males and females, total	187.9	6.6	73.6	347.5	490.8	1 054.9	236.7	459.6	2 663.1	2 857.6
Agriculture, fishing, quarrying	37.0	2.8	0.2	1.1	1.3	12.5	2.9	30.9	48.8	88.6
Manufacturing	8.8	0.4	14.1	29.3	52.3	206.7	30.8	54.9	388.1	397.3
Electricity, gas and water supply	0.7	0.0	0.4	1.7	3.1	4.7	1.2	2.1	13.2	13.8
Construction	20.5	0.5	4.4	3.5	8.7	106.9	19.4	30.2	173.0	194.0
Wholesale and retail trade, hotels, restaurants	37.7	1.5	17.1	11.0	60.7	216.9	53.7	138.8	498.2	537.4
Transport, post and telecommunications	9.5	0.3	2.8	6.2	24.7	76.4	12.8	40.9	163.8	173.6
Finance and business activities	35.1	0.7	10.8	73.0	106.1	86.2	51.0	87.2	414.1	450.0
Public and personal services	27.4	0.3	23.9	221.8	233.9	344.4	64.9	74.1	962.9	990.7
Activity not stated	11.1	0.1	0.0	0.1	0.1	0.1	0.0	0.6	0.9	12.1
Males, total	139.3	0.7	53.4	182.2	187.5	531.0	136.7	281.1	1 371.8	1 511.7
Agriculture, fishing, quarrying	33.5	0.1	0.2	0.8	0.8	9.7	2.3	22.6	36.5	70.1
Manufacturing	7.1	0.0	12.1	20.8	30.0	146.3	19.9	35.9	265.0	272.2
Electricity, gas and water supply	0.6	0.0	0.3	1.3	2.2	3.3	1.1	1.7	9.9	10.5
Construction	19.8	0.0	4.0	3.0	6.3	97.9	18.6	26.1	155.9	175.7
Wholesale and retail trade, hotels, restaurants	26.0	0.3	13.2	6.5	34.5	108.3	31.2	74.1	267.8	294.1
Transport, post and telecommunications	8.7	0.0	2.2	4.4	17.2	51.2	10.6	33.2	118.9	127.6
Finance and business activities	25.4	0.1	8.6	51.2	52.4	33.8	24.8	53.2	224.0	249.5
Public and personal services	11.5	0.1	12.7	94.0	44.0	80.4	28.2	34.0	293.3	304.9
Activity not stated	6.6	0.0	0.0	0.0	0.0	0.1	0.0	0.4	0.5	7.2
Females, total	48.6	6.0	20.3	165.3	303.3	523.9	100.0	178.5	1 291.3	1 345.9
Agriculture, fishing, quarrying	3.5	2.6	0.0	0.3	0.5	2.8	0.5	8.3	12.4	18.6
Manufacturing	1.8	0.3	2.0	8.5	22.3	60.4	11.0	19.0	123.1	125.2
Electricity, gas and water supply	0.1	0.0	0.0	0.4	1.0	1.4	0.1	0.4	3.3	3.4
Construction	0.7	0.5	0.3	0.5	2.4	9.0	0.7	4.1	17.1	18.3
Wholesale and retail trade, hotels, restaurants	11.7	1.3	3.9	4.4	26.2	108.6	22.5	64.7	230.4	243.4
Transport, post and telecommunications	0.7	0.3	0.6	1.8	7.5	25.2	2.2	7.8	45.0	46.0
Finance and business activities	9.7	0.6	2.2	21.7	53.7	52.4	26.2	34.0	190.1	200.5
Public and personal services	15.9	0.3	11.2	127.8	189.8	264.0	36.7	40.1	669.6	685.8
Activity not stated	4.5	0.1	0.0	0.0	0.0	0.1	0.0	0.2	0.3	4.9

For further information visit www.statbank.dk/ras9x

Table 117

Employed population, by sex, region and industry. 2008

	Agriculture, fishing, quarrying	Manufacturing	Electricity, gas and water supply	Construction	Wholesale and retail trade, hotels, restaurants	Transport, post and telecommunications	Finance and business activities	Public and personal services	Activity not stated	Total
	— thousands —									
Men og women, total	88.6	397.3	13.8	194.0	537.4	173.6	450.0	990.7	12.1	2 857.6
Region Hovedstaden	6.6	75.6	3.7	46.2	159.4	58.7	190.0	326.4	4.4	871.1
Region Sjælland	13.4	48.1	2.5	38.3	79.2	26.2	62.1	146.2	1.7	417.6
Region Syddanmark	27.5	107.0	3.1	43.2	117.5	37.9	72.5	200.9	2.4	612.1
Region Midtjylland	25.7	116.5	3.2	43.7	126.0	35.2	89.8	218.1	2.4	660.6
Region Nordjylland	15.4	50.1	1.5	22.6	55.3	15.6	35.6	99.0	1.2	296.1
Province København by	1.3	23.8	1.1	14.5	62.9	27.4	84.6	145.5	1.8	362.8
Province Københavns omegn	1.1	22.9	1.2	15.2	49.9	18.5	56.5	91.9	1.1	258.4
Province Nordsjælland	3.2	26.5	1.3	15.0	42.8	11.5	47.3	81.2	1.3	230.1
Province Bornholm	1.0	2.4	0.1	1.5	3.8	1.4	1.5	7.9	0.1	19.8
Province Østsjælland	1.8	13.1	0.6	9.5	25.7	8.2	24.3	41.3	0.4	124.7
Province Vest- og Sydsjælland	11.6	35.0	1.9	28.8	53.5	18.0	37.8	105.0	1.3	292.9
Province Fyn	10.3	35.7	0.9	18.0	45.4	14.0	30.2	86.6	1.1	242.0
Province Sydjylland	17.3	71.4	2.2	25.2	72.1	23.9	42.3	114.3	1.4	370.1
Province Østjylland	12.2	64.9	1.9	27.4	84.8	25.5	65.2	148.6	1.7	432.2
Province Vestjylland	13.5	51.6	1.3	16.3	41.3	9.7	24.5	69.5	0.7	228.4
Province Nordjylland	15.4	50.1	1.5	22.6	55.3	15.6	35.6	99.0	1.2	296.1
Men, total	70.1	272.2	10.5	175.7	294.1	127.6	249.5	304.9	7.2	1 511.7
Region Hovedstaden	5.1	46.4	2.6	41.7	88.4	42.2	107.8	111.1	2.5	447.8
Region Sjælland	10.4	33.0	1.9	34.8	44.2	19.4	33.2	42.9	1.1	220.9
Region Syddanmark	21.3	75.8	2.4	39.0	63.5	28.1	38.9	58.0	1.4	328.5
Region Midtjylland	20.4	81.1	2.4	39.6	68.7	26.2	50.1	63.6	1.5	353.5
Region Nordjylland	12.7	35.8	1.1	20.7	29.3	11.7	19.6	29.3	0.7	161.1
Province København by	1.0	14.7	0.7	13.3	33.6	19.1	48.0	54.0	1.1	185.4
Province Københavns omegn	0.8	14.1	0.8	13.5	28.6	13.6	31.8	29.3	0.6	133.2
Province Nordsjælland	2.4	15.9	0.9	13.5	24.2	8.4	27.2	25.2	0.7	118.6
Province Bornholm	0.9	1.7	0.1	1.4	1.9	1.0	0.8	2.6	0.1	10.5
Province Østsjælland	1.3	8.5	0.4	8.5	14.6	5.8	13.1	12.3	0.2	64.6
Province Vest- og Sydsjælland	9.1	24.6	1.5	26.3	29.6	13.7	20.1	30.6	0.8	156.3
Province Fyn	7.4	26.3	0.7	16.3	24.3	10.7	16.5	26.1	0.6	128.8
Province Sydjylland	13.9	49.6	1.7	22.7	39.2	17.5	22.4	31.9	0.8	199.6
Province Østjylland	9.5	45.1	1.5	24.7	46.4	18.8	37.0	44.2	1.0	228.4
Province Vestjylland	10.9	36.0	1.0	14.8	22.3	7.4	13.0	19.4	0.4	125.2
Province Nordjylland	12.7	35.8	1.1	20.7	29.3	11.7	19.6	29.3	0.7	161.1
Women, total	18.6	125.2	3.4	18.3	243.4	46.0	200.5	685.8	4.9	1 345.9
Region Hovedstaden	1.5	29.2	1.1	4.5	71.1	16.5	82.2	215.3	1.9	423.4
Region Sjælland	2.9	15.0	0.6	3.5	35.0	6.8	28.9	103.3	0.7	196.7
Region Syddanmark	6.2	31.2	0.7	4.2	54.0	9.7	33.6	142.9	1.0	283.6
Region Midtjylland	5.3	35.4	0.7	4.2	57.3	9.1	39.7	154.5	1.0	307.1
Region Nordjylland	2.7	14.3	0.3	1.9	26.0	3.9	16.0	69.7	0.4	135.1
Province København by	0.3	9.2	0.4	1.2	29.3	8.3	36.6	91.5	0.7	177.4
Province Københavns omegn	0.3	8.8	0.4	1.7	21.3	4.9	24.8	62.6	0.5	125.2
Province Nordsjælland	0.7	10.6	0.3	1.5	18.6	3.0	20.1	56.0	0.6	111.4
Province Bornholm	0.1	0.7	0.0	0.1	1.9	0.4	0.8	5.2	0.1	9.3
Province Østsjælland	0.5	4.6	0.1	1.0	11.1	2.4	11.2	29.0	0.2	60.2
Province Vest- og Sydsjælland	2.4	10.4	0.4	2.5	23.9	4.4	17.7	74.3	0.5	136.6
Province Fyn	2.9	9.4	0.2	1.7	21.1	3.3	13.7	60.5	0.4	113.2
Province Sydjylland	3.3	21.8	0.5	2.5	32.9	6.4	20.0	82.4	0.5	170.4
Province Østjylland	2.6	19.8	0.4	2.7	38.3	6.7	28.2	104.4	0.7	203.9
Province Vestjylland	2.6	15.6	0.3	1.5	19.0	2.3	11.5	50.1	0.3	103.2
Province Nordjylland	2.7	14.3	0.3	1.9	26.0	3.9	16.0	69.7	0.4	135.1

For further information visit www.statbank.dk/rasb1x

Table 118

Population by sex, age, and socio-economic status. 2008

	Labour force population					Persons outside the labour force				Population Total
	Self- employed persons	Assisting spouses	Employees	Un- employed persons	Total	Tem- porarily outside the labour force	Retire- ment pen- sioners	Pen- sioners	Other persons outside the labour force	
— thousands —										
Males and females, total	187.9	6.6	2 663.1	59.9	2 917.4	93.5	138.2	985.1	1 341.6	5 475.8
16-64 years, total	158.2	5.5	2 576.7	59.9	2 800.3	93.3	138.2	223.7	286.6	3 542.0
Under 16 years	0.0	0.0	35.5	0.0	35.5	0.0	0.0	0.0	1 050.2	1 085.7
16-19 years	0.3	0.0	160.9	1.7	162.8	2.7	0.0	4.4	93.3	263.2
20-24 years	2.6	0.0	230.4	5.7	238.8	7.2	0.0	4.0	53.7	303.7
25-29 years	7.8	0.1	251.1	7.9	266.8	11.3	0.0	4.5	37.6	320.3
30-34 years	14.8	0.3	299.7	8.6	323.4	14.4	0.0	7.6	23.1	368.5
35-39 years	20.3	0.5	314.7	7.9	343.5	13.8	0.0	11.9	18.1	387.3
40-44 years	25.3	0.8	345.7	7.3	379.1	13.2	0.0	19.8	16.6	428.7
45-49 years	23.2	0.8	300.2	5.5	329.6	10.9	0.0	26.1	12.4	379.0
50-54 years	21.7	0.8	279.9	4.9	307.2	9.2	0.0	35.8	10.5	362.8
55-59 years	21.9	1.1	258.9	8.3	290.3	8.3	0.0	46.6	10.1	355.3
60-64 years	20.2	1.0	135.3	2.1	158.7	2.3	138.2	63.0	11.3	373.5
65-66 years	6.6	0.3	18.7	0.0	25.6	0.1	0.0	88.4	1.2	115.2
67 years +	23.0	0.8	32.2	0.0	56.1	0.0	0.0	673.1	3.6	732.8
Males, total	139.3	0.7	1 371.8	28.4	1 540.1	33.5	58.1	408.0	673.0	2 712.7
Males 16-64 years, total	114.7	0.5	1 317.6	28.4	1 461.2	33.5	58.1	100.0	134.0	1 786.7
Under 16 years	0.0	0.0	19.3	0.0	19.3	0.0	0.0	0.0	536.9	556.2
16-19 years	0.2	0.0	81.9	0.8	83.0	1.4	0.0	2.3	48.4	135.1
20-24 years	2.1	0.0	119.6	2.7	124.5	2.9	0.0	2.2	24.8	154.4
25-29 years	5.8	0.0	129.1	3.5	138.4	3.5	0.0	2.5	16.2	160.6
30-34 years	10.8	0.0	152.9	3.6	167.3	4.0	0.0	3.9	9.7	184.9
35-39 years	14.4	0.0	160.2	3.5	178.2	4.1	0.0	5.9	7.9	196.1
40-44 years	17.8	0.1	174.4	3.4	195.8	4.6	0.0	9.6	7.9	217.9
45-49 years	16.6	0.1	149.8	2.8	169.2	4.2	0.0	12.0	6.2	191.7
50-54 years	15.6	0.1	139.5	2.7	157.8	3.8	0.0	15.8	5.0	182.4
55-59 years	16.0	0.1	130.4	4.0	150.4	3.6	0.0	19.3	4.2	177.5
60-64 years	15.5	0.1	79.7	1.3	96.6	1.3	58.1	26.4	3.7	186.1
65-66 years	5.4	0.0	12.3	0.0	17.8	0.0	0.0	38.2	0.5	56.6
67 years +	19.1	0.1	22.6	0.0	41.8	0.0	0.0	269.8	1.5	313.2
Females, total	48.6	6.0	1 291.3	31.5	1 377.4	59.9	80.2	577.1	668.6	2 763.1
Females 16-64 years, total	43.5	5.0	1 259.1	31.5	1 339.1	59.9	80.2	123.7	152.6	1 755.4
Under 16 years	0.0	0.0	16.2	0.0	16.2	0.0	0.0	0.0	513.3	529.5
16-19 years	0.1	0.0	78.9	0.9	79.8	1.3	0.0	2.0	44.9	128.1
20-24 years	0.5	0.0	110.8	3.0	114.3	4.3	0.0	1.8	28.9	149.2
25-29 years	1.9	0.1	122.0	4.4	128.4	7.8	0.0	2.0	21.4	159.7
30-34 years	4.0	0.3	146.8	4.9	156.1	10.4	0.0	3.6	13.4	183.6
35-39 years	5.9	0.5	154.5	4.4	165.3	9.7	0.0	6.0	10.2	191.2
40-44 years	7.5	0.7	171.3	3.9	183.4	8.5	0.0	10.2	8.7	210.8
45-49 years	6.6	0.7	150.4	2.6	160.3	6.7	0.0	14.0	6.2	187.3
50-54 years	6.1	0.7	140.3	2.3	149.4	5.4	0.0	20.1	5.5	180.3
55-59 years	6.0	1.0	128.5	4.3	139.9	4.7	0.0	27.3	6.0	177.8
60-64 years	4.7	0.9	55.5	0.8	62.0	1.0	80.2	36.7	7.5	187.4
65-66 years	1.2	0.3	6.4	0.0	7.9	0.0	0.0	50.2	0.6	58.7
67 years +	3.9	0.7	9.6	0.0	14.2	0.0	0.0	403.3	2.0	419.6

For further information visit www.statbank.dk/ras207

Table 119

Population by sex, region and socio-economic status. 2008

	Labour force population					Persons outside the labour force				Population Total
	Self- employed persons	Assisting spouses	Employees	Un- employed persons	Total	Tem- porarily outside the labour force	Retire- ment pen- sioners	Pen- sioners	Other persons outside the labour force	
	thousands									
Men and woman, total	187.9	6.6	2 663.1	59.9	2 917.4	93.5	138.2	985.1	1 341.6	5 475.8
Region Hovedstaden	52.9	1.2	817.0	22.8	893.9	27.8	33.5	276.6	414.1	1 645.8
Region Sjælland	30.8	1.0	385.8	9.7	427.4	12.2	24.5	159.2	196.2	819.4
Region Syddanmark	39.8	1.8	570.4	10.5	622.6	21.0	32.4	230.1	288.5	1 194.7
Region Midtjylland	43.0	1.7	616.0	9.8	670.4	21.5	30.8	209.1	305.2	1 237.0
Region Nordjylland	21.3	0.9	273.9	7.0	303.2	10.9	17.1	110.2	137.5	578.8
Men, total	139.3	0.7	1 371.8	28.4	1 540.1	33.5	58.1	408.0	673.0	2 712.7
Region Hovedstaden	36.8	0.2	410.7	11.4	459.1	10.5	13.9	112.3	208.6	804.5
Region Sjælland	23.0	0.1	197.8	4.4	225.3	4.3	10.6	67.6	98.5	406.3
Region Syddanmark	30.1	0.2	298.2	4.8	333.3	7.5	13.8	96.0	144.1	594.6
Region Midtjylland	32.7	0.1	320.7	4.5	358.0	7.4	12.6	86.2	152.7	616.9
Region Nordjylland	16.6	0.1	144.4	3.2	164.3	3.8	7.2	46.0	69.1	290.4
Woman, total	48.6	6.0	1 291.3	31.5	1 377.4	59.9	80.2	577.1	668.6	2 763.1
Region Hovedstaden	16.1	1.0	406.3	11.4	434.7	17.3	19.5	164.3	205.5	841.3
Region Sjælland	7.8	0.9	188.0	5.3	202.0	7.9	13.9	91.6	97.7	413.1
Region Syddanmark	9.7	1.6	272.3	5.7	289.4	13.6	18.6	134.1	144.4	600.1
Region Midtjylland	10.2	1.6	295.3	5.3	312.4	14.0	18.2	123.0	152.6	620.1
Region Nordjylland	4.7	0.9	129.5	3.8	138.9	7.1	9.9	64.1	68.4	288.4

¹ Incl. Christiansø.For further information visit www.statbank.dk/ras207

Table 120

16-64-year-old persons analysed by ancestry and labour market attachment

	2007					2008				
	Population	Labour force	Persons employed	Activity rate	Employment rate	Population	Labour force	Persons employed	Activity rate	Employment rate
	persons			per cent		persons			per cent	
Total population	3 530 083	2 789 845	2 709 577	79.0	76.8	3 542 047	2 800 250	2 740 391	79.1	77.4
Immigrants from:										
The Western World	105 148	69 697	67 301	66.3	64.0	114 416	76 051	74 215	66.5	64.9
The non-Western World	200 886	119 641	107 270	59.6	53.4	208 698	126 634	116 769	60.7	56.0
Bosnia-Herzegovina	14 954	9 180	8 583	61.4	57.4	15 644	9 643	9 198	61.6	58.8
Iraq	16 433	7 419	6 075	45.2	37.0	17 235	8 181	7 016	47.5	40.7
Iran	10 597	6 450	5 879	60.9	55.5	10 699	6 631	6 197	62.0	57.9
Yugoslavia (former)	9 951	6 021	5 502	60.5	55.3	10 029	6 058	5 526	60.4	56.1
Lebanon	11 332	4 859	4 017	42.9	35.5	11 347	5 044	4 407	44.5	38.8
Pakistan	9 422	5 581	4 840	59.2	51.4	9 465	5 488	4 947	58.0	52.3
Somalia	8 411	3 905	2 909	46.4	34.6	8 627	4 295	3 501	49.8	40.6
Turkey	28 719	18 843	16 479	65.6	57.4	28 993	19 223	17 335	66.3	59.8
Descendants	33 434	23 697	22 637	70.9	67.7	34 638	24 553	23 502	70.9	67.9
Persons of Danish origin	3 190 615	2 576 810	2 512 369	80.8	78.7	3 184 295	2 573 012	2 525 905	80.8	79.3

For further information visit www.statbank.dk/ras1f and ras207

Table 121

Employees by sex, sector and working time

	2007		2008	
	Men	Women	Men	Women
	persons			
Total¹	1 356 142	1 270 249	1 371 771	1 291 287
Full-time	1 171 082	1 059 683	1 179 887	1 074 400
Part-time	185 060	210 566	191 884	216 887
Private sector, total	1 055 047	633 745	1 078 296	661 893
Full-time	904 039	484 365	920 370	506 102
Part-time	151 008	149 380	157 926	155 791
Public sector, total	301 021	636 481	293 475	629 393
Full-time	266 974	575 300	259 517	568 297
Part-time	34 047	61 181	33 958	61 096
Public corporations, etc.	52 012	31 232	50 062	31 922
Full-time	48 337	28 230	46 545	28 990
Part-time	3 675	3 002	3 517	2 932
General government, total	249 009	605 249	243 413	597 471
Full-time	218 637	547 070	212 972	539 307
Part-time	30 372	58 179	30 441	58 164
Central government sector	97 454	84 518	103 036	94 676
Full-time	84 600	73 461	90 044	82 232
Part-time	12 854	11 057	12 992	12 444
Social security funds	690	1 798	672	1 754
Full-time	666	1 737	635	1 689
Part-time	24	61	37	65
Regions	47 102	147 374	27 697	105 177
Full-time	42 419	137 424	25 402	99 021
Part-time	4 683	9 950	2 295	6 156
Municipalities	103 763	371 559	112 008	395 864
Full-time	90 952	334 448	96 891	356 365
Part-time	12 811	37 111	15 117	39 499
Foreign sector	3	2	-	1
Full-time	3	1	-	1
Part-time	-	1	-	-

¹ Including not known and persons employed abroad.

For further information visit www.statbank.dk/rasoff11

Table 122

Commuting to and from work for employed population. 2007

	Commu- ting, total	No commu- ting	Until 5 km	5-10 km	10-20 km	20-30 km	30-40 km	40-50 km	Over 50 km estimated	Not	Average
Men and women, total	2 821 641	228 275	899 840	514 675	525 855	258 045	133 902	75 500	177 642	7 907	18.1
Region Hovedstaden	861 113	53 503	286 729	194 213	180 636	72 470	32 413	14 915	24 525	1 709	14.2
Region Sjælland	415 140	38 414	104 451	50 922	69 286	47 245	32 454	19 110	52 527	731	24.4
Region Syddanmark	605 280	53 448	197 703	111 732	106 014	55 315	24 792	13 534	39 956	2 786	18.6
Region Midtjylland	648 469	56 102	214 083	111 828	118 204	55 622	30 251	19 858	41 268	1 253	18.1
Region Nordjylland	291 639	26 808	96 874	45 980	51 715	27 393	13 992	8 083	19 366	1 428	19.9
Province Copenhagen Town	355 860	17 339	155 824	96 128	51 462	14 031	7 093	2 487	10 587	909	12.1
Province Copenhagen Suburbs	256 014	14 838	74 257	65 233	76 300	15 770	3 469	1 376	4 448	323	12.1
Province Nordsjælland	229 435	19 411	49 207	29 875	49 089	40 498	21 399	11 047	8 562	347	19.5
Province Bornholm	19 804	1 915	7 441	2 977	3 785	2 171	452	5	928	130	21.5
Province Østsjælland	124 672	9 696	26 512	14 175	22 353	22 049	17 136	7 973	4 627	151	21.1
Province Vest- og Sydsjælland	290 468	28 718	77 939	36 747	46 933	25 196	15 318	11 137	47 900	580	25.8
Province Fyn	238 465	20 814	77 050	46 490	40 913	19 724	9 539	5 987	16 367	1 581	19.2
Province Sydjylland	366 815	32 634	120 653	65 242	65 101	35 591	15 253	7 547	23 589	1 205	18.2
Province Østjylland	423 105	34 108	133 704	79 650	77 306	34 811	20 449	14 046	28 166	865	18.5
Province Vestjylland	225 364	21 994	80 379	32 178	40 898	20 811	9 802	5 812	13 102	388	17.1
Province Nordjylland	291 639	26 808	96 874	45 980	51 715	27 393	13 992	8 083	19 366	1 428	19.9
Men, total	1 496 911	148 004	421 366	258 098	275 534	141 297	77 473	46 165	122 081	6 893	21.2
Region Hovedstaden	443 441	34 971	126 444	95 241	98 287	41 460	19 578	9 577	16 523	1 360	16.5
Region Sjælland	220 044	24 882	46 812	24 000	33 417	24 725	18 288	11 575	35 698	647	28.9
Region Syddanmark	325 811	34 207	95 500	57 124	55 762	30 250	14 291	8 044	28 054	2 579	21.9
Region Midtjylland	348 486	36 218	104 481	57 361	61 292	29 995	17 462	12 212	28 380	1 085	20.8
Region Nordjylland	159 129	17 726	48 129	24 372	26 776	14 867	7 854	4 757	13 426	1 222	23.4
Province Copenhagen Town	182 181	11 542	70 381	48 174	30 338	8 819	4 237	1 494	6 529	667	13.8
Province Copenhagen Suburbs	132 036	9 741	31 427	32 236	42 217	9 543	2 390	974	3 235	273	14.1
Province Nordsjælland	118 668	12 424	21 075	13 289	23 760	21 923	12 695	7 105	6 094	303	22.5
Province Bornholm	10 556	1 264	3 561	1 542	1 972	1 175	256	4	665	117	27.2
Province Østsjælland	64 520	6 267	10 968	6 394	10 890	11 990	9 886	4 898	3 098	129	24.0
Province Vest- og Sydsjælland	155 524	18 615	35 844	17 606	22 527	12 735	8 402	6 677	32 600	518	31.0
Province Fyn	127 458	13 093	36 443	23 471	21 656	10 892	5 501	3 434	11 510	1 458	23.0
Province Sydjylland	198 353	21 114	59 057	33 653	34 106	19 358	8 790	4 610	16 544	1 121	21.2
Province Østjylland	224 524	21 701	63 225	40 078	40 027	18 965	12 028	8 683	19 063	754	21.5
Province Vestjylland	123 962	14 517	41 256	17 283	21 265	11 030	5 434	3 529	9 317	331	19.5
Province Nordjylland	159 129	17 726	48 129	24 372	26 776	14 867	7 854	4 757	13 426	1 222	23.4
Women, total	1 324 730	80 271	478 474	256 577	250 321	116 748	56 429	29 335	55 561	1 014	14.8
Region Hovedstaden	417 672	18 532	160 285	98 972	82 349	31 010	12 835	5 338	8 002	349	11.9
Region Sjælland	195 096	13 532	57 639	26 922	35 869	22 520	14 166	7 535	16 829	84	19.5
Region Syddanmark	279 469	19 241	102 203	54 608	50 252	25 065	10 501	5 490	11 902	207	14.9
Region Midtjylland	299 983	19 884	109 602	54 467	56 912	25 627	12 789	7 646	12 888	168	15.0
Region Nordjylland	132 510	9 082	48 745	21 608	24 939	12 526	6 138	3 326	5 940	206	15.9
Province Copenhagen Town	173 679	5 797	85 443	47 954	21 124	5 212	2 856	993	4 058	242	10.3
Province Copenhagen Suburbs	123 978	5 097	42 830	32 997	34 083	6 227	1 079	402	1 213	50	10.1
Province Nordsjælland	110 767	6 987	28 132	16 586	25 329	18 575	8 704	3 942	2 468	44	16.4
Province Bornholm	9 248	651	3 880	1 435	1 813	996	196	1	263	13	15.3
Province Østsjælland	60 152	3 429	15 544	7 781	11 463	10 059	7 250	3 075	1 529	22	18.1
Province Vest- og Sydsjælland	134 944	10 103	42 095	19 141	24 406	12 461	6 916	4 460	15 300	62	20.2
Province Fyn	111 007	7 721	40 607	23 019	19 257	8 832	4 038	2 553	4 857	123	15.2
Province Sydjylland	168 462	11 520	61 596	31 589	30 995	16 233	6 463	2 937	7 045	84	14.8
Province Østjylland	198 581	12 407	70 479	39 572	37 279	15 846	8 421	5 363	9 103	111	15.4
Province Vestjylland	101 402	7 477	39 123	14 895	19 633	9 781	4 368	2 283	3 785	57	14.4
Province Nordjylland	132 510	9 082	48 745	21 608	24 939	12 526	6 138	3 326	5 940	206	15.9

Note: Regions and provinces indicates the area of residence.

For further information visit www.statbank.dk/afstb1 and afstb2

Table 123

Commuting to and from work in major municipalities. 2008

	Persons with workplace in the area			Employed persons resident in the area			Incoming commuters, net		
	Men	Women	Total	Men	Women	Total	Men	Women	Total
	persons								
Region Hovedstaden	492 314	452 584	944 898	447 750	423 350	871 100	44 564	29 234	73 798
Region Sjælland	180 653	169 699	350 352	220 897	196 730	417 627	-40 244	-27 031	-67 275
Region Syddanmark	322 715	283 981	606 696	328 471	283 606	612 077	-5 756	375	-5 381
Region Midtjylland	352 174	304 646	656 820	353 524	307 088	660 612	-1 350	-2 442	-3 792
Region Nordjylland	157 664	133 858	291 522	161 060	135 089	296 149	-3 396	-1 231	-4 627
Province Copenhagen Town	208 162	206 183	414 345	185 428	177 420	362 848	22 734	28 763	51 497
Copenhagen	173 147	172 624	345 771	145 812	137 988	283 800	27 335	34 636	61 971
Frederiksberg	17 976	21 550	39 526	25 517	25 887	51 404	-7 541	-4 337	-11 878
Province Copenhagen Suburbs	177 815	145 621	323 436	133 202	125 182	258 384	44 613	20 439	65 052
Ballerup	22 386	18 367	40 753	12 007	11 331	23 338	10 379	7 036	17 415
Gentofte	18 434	20 438	38 872	17 824	17 771	35 595	610	2 667	3 277
Gladsaxe	18 621	15 760	34 381	16 473	15 656	32 129	2 148	104	2 252
Høje-Taastrup	18 514	13 840	32 354	13 155	11 712	24 867	5 359	2 128	7 487
Lyngby-Taarbæk	18 459	15 670	34 129	13 402	12 871	26 273	5 057	2 799	7 856
Province Nordsjælland	96 109	91 580	187 689	118 640	111 447	230 087	-22 531	-19 867	-42 398
Helsingør	11 810	11 851	23 661	15 659	14 708	30 367	-3 849	-2 857	-6 706
Province Bornholm	10 228	9 200	19 428	10 480	9 301	19 781	-252	-101	-353
Province Østsjælland	51 919	48 843	100 762	64 577	60 161	124 738	-12 658	-11 318	-23 976
Roskilde	20 905	21 178	42 083	22 282	20 941	43 223	-1 377	237	-1 140
Province Vest- og Sydsjælland	128 734	120 856	249 590	156 320	136 569	292 889	-27 586	-15 713	-43 299
Guldborgsund	13 518	13 095	26 613	16 222	14 150	30 372	-2 704	-1 055	-3 759
Holbæk	14 749	15 063	29 812	19 096	17 055	36 151	-4 347	-1 992	-6 339
Næstved	17 332	17 727	35 059	22 228	19 652	41 880	-4 896	-1 925	-6 821
Slagelse	18 719	16 777	35 496	20 379	17 984	38 363	-1 660	-1 207	-2 867
Province Fyn	120 177	110 161	230 338	128 826	113 178	242 004	-8 649	-3 017	-11 666
Odense	50 834	51 466	102 300	49 353	45 284	94 637	1 481	6 182	7 663
Province Sydjylland	202 538	173 820	376 358	199 645	170 428	370 073	2 893	3 392	6 285
Esbjerg	33 750	28 606	62 356	31 755	27 421	59 176	1 995	1 185	3 180
Kolding	28 140	23 783	51 923	25 271	22 196	47 467	2 869	1 587	4 456
Sønderborg	19 632	18 312	37 944	20 084	17 552	37 636	-452	760	308
Vejle	28 983	27 458	56 441	29 861	26 234	56 095	-878	1 224	346
Aabenraa	15 935	14 378	30 313	16 257	13 877	30 134	-322	501	179
Province Østjylland	221 739	199 057	420 796	228 364	203 883	432 247	-6 625	-4 826	-11 451
Horsens	23 123	20 003	43 126	22 835	19 839	42 674	288	164	452
Randers	23 062	21 951	45 013	26 020	22 390	48 410	-2 958	-439	-3 397
Silkeborg	22 328	20 333	42 661	24 997	22 015	47 012	-2 669	-1 682	-4 351
Skanderborg	13 429	11 445	24 874	16 118	14 571	30 689	-2 689	-3 126	-5 815
Århus	95 023	87 429	182 452	82 361	77 543	159 904	12 662	9 886	22 548
Province Vestjylland	130 435	105 589	236 024	125 160	103 205	228 365	5 275	2 384	7 659
Herning	26 318	21 305	47 623	24 909	20 804	45 713	1 409	501	1 910
Holstebro	16 841	15 399	32 240	16 678	14 292	30 970	163	1 107	1 270
Ringkøbing-Skjern	18 931	14 410	33 341	17 759	14 168	31 927	1 172	242	1 414
Viborg	29 578	23 960	53 538	26 968	22 681	49 649	2 610	1 279	3 889
Province Nordjylland	157 664	133 858	291 522	161 060	135 089	296 149	-3 396	-1 231	-4 627
Frederikshavn	17 533	14 432	31 965	17 104	14 430	31 534	429	2	431
Hjørring	16 863	15 168	32 031	18 315	15 616	33 931	-1 452	-448	-1 900
Aalborg	56 885	50 177	107 062	53 412	46 493	99 905	3 473	3 684	7 157

For further information visit www.statbank.dk/rasa1 and [rasb1](http://www.statbank.dk/rasb1)

Table 124

Absence due to own sickness. 2007 – corrected

	Governmental sector			Municipalities			Private sector		
	Men	Woman	Total	Men	Woman	Total	Men	Woman	Total
	average no. of absence days per full-time employed								
Age, total	7.35	10.38	8.64	9.80	14.27	13.27
- 19 years	7.19	8.58	7.60	7.23	11.76	10.93
20-24 years	7.56	11.25	8.54	9.70	14.28	13.33
25-29 years	6.60	9.23	7.71	9.26	15.97	14.76
30-34 years	5.80	8.78	7.21	9.32	15.76	14.43
35-39 years	6.04	9.44	7.71	9.74	14.87	13.83
40-44 years	6.80	10.78	8.66	9.70	14.00	13.15
45-49 years	7.59	10.86	8.96	9.61	13.57	12.74
50-54 years	7.76	11.45	9.22	10.04	13.83	12.92
55-59 years	8.83	11.71	10.01	10.75	13.94	13.09
60 years +	8.42	9.83	8.94	9.43	12.05	11.16

Note: Comparison between the public and the private sector must be treated with caution, since the statistics are still new and the method continuously improved.

For further information visit www.statistikbanken.dk/fra05

Table 125

Absence due to own sickness by occupation. 2007 – corrected

	Governmental sector	Municipalities	Private sector
	average no. of absence days per full-time employed		
Total	8.64	13.27	...
Armed forces occupations	7.40
Chief executives, senior officials and the public sector	4.68	7.49	...
High level of qualifications	6.05	9.84	...
Medium high level of qualifications	10.18	13.69	...
Clerical support workers	12.11	11.62	...
Retail trade, service and personal care workers	11.81	15.88	...
Agricultural and horticultural workers, etc.	9.94	13.05	...
Craft and related trades workers	11.43	9.71	...
Process and machine operator work, transport and civil engineering	11.39	17.18	...
Other types of occupation	12.62	14.45	...

Note: Comparison between the public and the private sector must be treated with caution, since the statistics are still new and the method continuously improved.

For further information visit www.statbank.dk/fra01

Table 126

Earnings by occupation, private sector. 2007

	Number employed	Per hour worked, all hourly-paid and fixed-salary workers					Per month, fixed-salary earners ¹	
		Earnings including nuisance bonus Average	Earnings excluding nuisance bonus				Number of fixed- salary earners	Earnings excluding nuisance bonus Average ²
		Average	Lower quartile	Median	Upper quartile			
		amount in DKK					DKK	
Total	1 193 835	255.70	251.10	180.05	219.80	284.10	718 185	36 732
Men	774 410	268.29	262.61	185.93	225.76	298.56	412 760	40 122
Women	419 425	230.08	227.70	169.11	207.93	260.41	305 425	31 539
Legislators, senior officials and managers	54 665	423.98	423.24	257.59	352.06	504.21	54 052	56 534
Men	43 512	443.97	443.19	268.03	370.47	529.58	43 037	59 333
Women	11 153	339.51	338.93	227.62	290.54	399.48	11 015	44 694
Professionals	118 777	342.12	340.65	254.33	320.00	399.29	112 406	45 516
Men	81 868	355.96	354.36	266.67	334.77	412.96	76 765	47 693
Women	36 909	309.76	308.60	233.42	286.12	360.64	35 641	40 450
Technicians and associate professionals	243 583	286.23	284.18	215.90	260.78	325.68	232 455	37 849
Men	136 367	309.88	306.98	229.48	282.27	354.25	127 942	41 274
Women	107 216	254.58	253.66	203.27	238.57	286.81	104 513	33 342
Clerks	138 831	218.52	216.90	175.63	203.93	243.80	117 118	29 099
Men	52 249	222.37	219.46	171.98	199.44	249.16	39 164	30 171
Women	86 582	216.58	215.62	177.76	205.83	241.97	77 954	28 590
Service workers and shop and market sales workers	135 342	185.53	180.64	139.71	169.57	205.99	73 487	25 509
Men	60 249	195.88	189.64	146.05	180.20	217.78	29 826	27 548
Women	75 093	176.15	172.48	136.20	161.89	194.17	43 661	23 734
Skilled agricultural and fishery workers	1 821	197.75	191.69	161.81	183.52	210.58	696	27 419
Men	1 395	200.37	193.39	162.69	184.86	211.28	489	28 283
Women	426	188.82	185.92	157.24	180.87	207.41	207	25 122
Craft and related trades workers	148 371	229.49	222.96	191.92	214.54	243.94	31 071	31 451
Men	139 996	231.36	224.67	193.77	215.97	245.16	28 581	31 852
Women	8 375	196.62	192.71	163.15	185.49	211.44	2 490	26 464
Plant and machine operators and assemblers	150 034	211.64	199.35	167.67	189.55	218.92	33 887	27 979
Men	115 391	215.95	202.88	170.35	192.76	223.34	26 022	28 833
Women	34 643	194.74	185.51	160.97	178.41	200.56	7 865	24 566
Elementary occupations	162 508	194.20	187.97	153.88	178.10	209.99	38 853	26 586
Men	115 389	201.30	194.17	158.88	185.69	218.03	25 570	27 733
Women	47 119	175.18	171.35	148.03	161.71	185.15	13 283	23 986

Note: The table includes all employees excluding young people under 18 and trainees.

¹ Calculated for a working week of 37 hours. ² Earnings include contributions to pension schemes.

For further information visit www.statbank.dk/lon02

Table 127

Earnings by industry, private sector. 2007

	Number employed	Per hour worked, all hourly-paid and fixed-salary workers					Per month, fixed-salary earners ¹		
		Earnings including nuisance bonus Average	Earnings excluding nuisance bonus				Number of fixed- salary earners	Earnings excluding nuisance bonus Average ²	
			Average	Lower quartile	Median	Upper quartile			
		amount in DDK						DKK	
Total	1 193 835	255.70	251.10	180.05	219.80	284.10	718 185	36 732	
Men	774 410	268.29	262.61	185.93	225.76	298.56	412 760	40 122	
Women	419 425	230.08	227.70	169.11	207.93	260.41	305 425	31 539	
Agriculture, fishing, quarrying ³	4 503	322.45	307.73	218.27	259.96	362.64	2 488	48 126	
Men	3 894	327.56	311.36	219.29	259.82	371.95	1 934	50 432	
Women	609	288.48	283.57	213.57	261.18	323.58	554	38 343	
Manufacturing	312 265	248.81	241.19	181.87	212.90	263.01	143 964	37 419	
Men	220 954	258.48	249.73	187.33	218.82	272.50	92 768	40 268	
Women	91 311	223.72	219.03	171.06	198.13	241.32	51 196	31 837	
Electricity, gas and water supply	8 639	310.70	304.11	222.76	264.90	354.35	8 531	40 402	
Men	6 157	324.38	315.97	227.69	275.23	367.43	6 066	42 245	
Women	2 482	272.27	270.78	211.60	243.50	308.07	2 465	35 267	
Construction	99 802	244.87	240.57	197.03	223.25	263.91	22 409	37 384	
Men	91 835	246.84	242.21	198.48	224.42	265.37	17 015	39 472	
Women	7 967	222.70	222.14	181.11	207.80	245.54	5 394	30 280	
Ws. and retail trade; hotels, restaurants	263 044	233.63	231.36	161.57	202.61	260.51	180 498	32 872	
Men	156 438	251.49	248.81	172.90	214.29	281.93	101 572	36 297	
Women	106 606	203.52	201.93	148.79	183.18	228.38	78 926	27 816	
Transport, post and telecommunications	117 402	243.89	235.71	171.45	201.38	257.03	83 697	33 591	
Men	80 378	251.29	241.59	170.94	201.97	261.96	52 361	35 811	
Women	37 024	224.87	220.61	172.69	200.42	247.25	31 336	29 440	
Finance and business activities	292 883	294.79	293.12	197.82	261.45	349.98	206 366	41 696	
Men	170 723	321.84	319.62	206.91	289.39	386.61	111 479	46 599	
Women	122 160	255.81	254.93	188.54	237.08	295.52	94 887	35 025	
Finance and insurance	90 502	332.04	330.80	246.38	300.03	378.51	87 311	43 081	
Men	42 158	377.65	375.93	279.78	345.81	432.24	40 167	49 460	
Women	48 344	288.18	287.39	231.47	269.87	320.64	47 144	36 971	
Letting and sale of real estate	19 914	251.38	250.02	180.09	214.77	274.76	15 051	34 761	
Men	13 485	261.81	259.92	180.19	214.35	287.49	9 402	37 121	
Women	6 429	233.08	232.65	179.80	215.33	259.48	5 649	31 194	
Business activities	182 467	285.39	283.51	183.13	247.62	343.16	104 004	41 935	
Men	115 080	312.01	309.60	196.10	277.05	377.23	61 910	46 707	
Women	67 387	241.16	240.17	168.42	217.81	278.04	42 094	34 265	
Public and personal services	95 048	253.36	249.92	182.79	226.15	282.59	70 033	34 547	
Men	43 867	267.64	262.55	185.04	231.73	299.73	29 431	37 117	
Women	51 181	240.44	238.50	180.82	222.82	269.52	40 602	32 330	
Activity not stated	228	241.33	240.55	185.74	222.28	269.58	190	33 918	
Men	145	247.89	247.35	187.74	222.37	276.32	127	34 592	
Women	83	227.54	226.26	175.77	222.28	252.24	63	32 387	

Note: The table includes all employees excluding young people under 18 and trainees.

¹ Calculated for a working week of 37 hours. ² Earnings include contributions to pension schemes. ³ Agriculture and fishing not included.

For further information www.statbank.dk/lon04

Table 128

Earnings by level of education, private sector. 2007

	Number employed	Per hour worked, all hourly-paid and fixed-salary workers					Per month, fixed-salary earners ¹		
		Earnings including nuisance bonus Average	Earnings excluding nuisance bonus				Number of fixed- salary earners	Earnings excluding nuisance bonus Average	
			Average	Lower quartile	Median	Upper quartile			
		amount in DKK						DKK	
Total	1 193 835	255.70	251.10	180.05	219.80	284.10	718 185	36 732	
Men	774 410	268.29	262.61	185.93	225.76	298.56	412 760	40 122	
Women	419 425	230.08	227.70	169.11	207.93	260.41	305 425	31 539	
Basic school 8-10 grade	297 621	210.83	203.82	160.39	188.43	225.22	111 559	29 815	
Men	193 813	218.77	210.43	165.74	193.48	231.04	60 906	31 868	
Women	103 808	194.63	190.35	152.62	177.75	212.34	50 653	26 992	
General upper secondary school	77 290	248.01	242.81	155.02	202.14	281.80	40 172	36 350	
Men	43 653	270.46	264.00	160.95	212.25	314.39	21 424	40 704	
Women	33 637	216.22	212.78	147.99	189.90	249.84	18 748	30 633	
Vocational upper secondary school	42 943	244.48	241.32	165.31	210.85	278.29	27 053	34 502	
Men	25 082	261.05	256.97	164.28	216.41	305.05	13 975	38 261	
Women	17 861	223.04	221.06	166.59	205.91	254.25	13 078	30 324	
Vocational education and training	464 547	243.85	239.22	186.36	218.39	265.25	293 389	33 601	
Men	309 445	253.40	247.53	192.44	223.31	272.71	165 398	36 188	
Women	155 102	222.44	220.59	173.13	206.09	249.92	127 991	29 741	
Short-cycle higher education	75 821	268.60	266.06	202.96	244.39	303.24	64 254	36 502	
Men	45 247	283.39	279.97	208.89	257.25	321.88	35 773	39 493	
Women	30 574	245.30	244.12	195.93	228.16	275.00	28 481	32 390	
Medium-cycle higher education	86 688	335.33	333.11	235.68	303.33	387.62	77 828	45 402	
Men	58 115	361.96	359.51	257.77	329.64	412.65	51 952	49 427	
Women	28 573	275.21	273.52	209.08	252.09	315.96	25 876	36 449	
Bachelor	22 772	286.19	284.51	193.41	243.92	324.03	17 556	39 464	
Men	11 962	321.16	318.97	199.70	267.33	375.83	8 507	45 664	
Women	10 810	249.33	248.18	188.57	230.06	281.68	9 049	33 415	
Long-cycle higher education	69 861	376.63	375.19	260.90	335.53	436.94	66 239	50 284	
Men	44 863	402.42	400.80	276.82	357.97	465.01	42 066	54 231	
Women	24 998	327.13	326.03	239.86	299.21	379.61	24 173	42 820	
Phd-degree	3 353	418.72	417.78	327.37	389.38	472.87	3 258	55 924	
Men	2 489	430.18	429.22	334.65	398.48	484.82	2 406	57 660	
Women	864	384.61	383.76	313.32	367.79	428.99	852	50 754	
Unknown	52 939	225.17	218.12	151.94	182.56	232.32	16 877	36 789	
Men	39 741	229.82	221.75	154.56	184.53	230.88	10 353	39 974	
Women	13 198	210.57	206.69	146.09	172.67	236.85	6 524	31 138	

Note: The table includes all employees excluding young people under 18 and trainees.

¹ Calculated for a working week of 37 hours. ² Earnings include contributions to pension schemes.

For further information visit www.statbank.dk/lon01

Table 129

Earnings by occupation, local government. 2007

	Number employed	Per hour worked, all hourly-paid and fixed-salary workers					Per month, fixed-salary earners ¹	
		Earnings including nuisance bonus Average	Earnings excluding nuisance bonus				Number of fixed- salary earners	Earnings excluding nuisance bonus Average ²
			Average	Lower quartile	Median	Upper quartile		
		amount in DKK						DKK
Total	784 967	226.36	218.08	176.72	205.99	241.28	729 060	28 982
Men	171 212	250.41	241.86	186.20	222.82	266.43	157 596	32 923
Women	613 755	219.11	210.91	174.77	201.83	233.44	571 464	27 797
Legislators, senior officials and managers	21 192	340.00	336.70	253.22	300.96	368.28	21 160	46 022
Men	10 480	381.46	376.55	287.09	334.41	416.59	10 451	51 748
Women	10 712	301.32	299.52	242.37	268.93	323.64	10 709	40 683
Professionals	159 632	283.26	276.37	234.48	256.67	289.42	154 949	36 862
Men	56 737	300.77	290.90	239.13	262.06	308.90	54 553	39 458
Women	102 895	273.20	268.02	232.26	254.04	280.46	100 396	35 375
Technicians and associate professionals	228 946	226.14	218.29	194.98	214.54	233.23	223 889	28 561
Men	34 045	231.65	224.88	198.48	219.70	244.53	33 053	30 140
Women	194 901	225.12	217.07	194.39	213.78	231.52	190 836	28 269
Clerks	44 713	205.32	202.84	185.16	200.24	214.91	43 649	26 836
Men	3 896	204.49	202.13	182.53	201.64	220.27	3 574	27 521
Women	40 817	205.40	202.90	185.36	200.16	214.42	40 075	26 774
Service workers and shop and market sales workers	259 568	188.41	175.96	158.31	174.26	190.06	220 035	23 252
Men	33 183	183.97	170.59	145.43	168.49	190.00	24 990	22 964
Women	226 385	189.00	176.68	159.80	174.73	190.07	195 045	23 287
Skilled agricultural and fishery workers	1 921	212.97	208.28	187.19	204.93	224.90	1 912	27 718
Men	1 494	215.86	210.77	190.51	206.87	226.33	1 487	28 175
Women	427	200.87	197.86	174.98	193.47	219.30	425	25 812
Craft and related trades workers	4 952	224.99	216.16	198.66	212.85	229.65	4 887	29 216
Men	4 603	225.59	216.36	199.28	213.12	229.68	4 557	29 301
Women	349	214.99	212.71	187.91	207.86	227.57	330	27 791
Plant and machine operators and assemblers	1 122	197.87	186.02	163.89	182.67	200.02	1 094	25 487
Men	1 013	196.86	185.09	162.84	181.83	199.79	989	25 551
Women	109	208.53	195.86	175.81	190.74	203.29	105	24 817
Elementary occupations	62 667	179.92	174.88	155.98	170.74	188.84	57 241	23 391
Men	25 647	191.23	185.20	166.84	182.88	200.39	23 829	25 109
Women	37 020	169.47	165.34	151.02	162.63	174.64	33 412	21 780

Note: The table includes all employees excluding young people under 18 and trainees.

¹ Calculated for a working week of 37 hours. ² Earnings include contributions to pension schemes.

For further information visit www.statbank.dk/lon42

Table 130

Earnings by industry, local government. 2007

	Number employed	Per hour worked, all hourly-paid and fixed-salary workers					Per month, fixed-salary earners ¹	
		Earnings including nuisance bonus Average	Earnings excluding nuisance bonus				Number of fixed- salary earners	Earnings excluding nuisance bonus Average ²
		Average	Lower quartile	Median	Upper quartile			
		amount in DKK					DKK	
Total	784 967	226.36	218.08	176.72	205.99	241.28	729 060	28 982
Men	171 212	250.41	241.86	186.20	222.82	266.43	157 596	32 923
Women	613 755	219.11	210.91	174.77	201.83	233.44	571 464	27 797
Public administration	69 734	255.35	253.13	204.99	229.38	277.59	69 208	33 908
Men	20 424	293.52	289.49	221.76	265.39	322.80	20 250	39 452
Women	49 310	238.06	236.67	201.05	221.17	251.39	48 958	31 400
Education	132 678	245.15	241.85	215.66	242.54	262.55	127 021	32 147
Men	43 903	252.80	249.14	219.51	247.05	267.96	41 395	33 631
Women	88 775	241.24	238.10	213.56	240.01	260.14	85 626	31 391
Human health activities	131 803	260.71	244.57	189.54	217.69	256.78	128 665	32 100
Men	23 352	330.01	306.85	199.61	257.38	402.83	22 593	41 752
Women	108 451	245.00	230.45	188.28	214.32	242.64	106 072	29 921
Social institutions etc.	391 382	200.95	192.51	166.13	186.31	212.54	348 755	25 502
Men	53 885	205.97	198.31	163.65	193.56	223.63	45 279	26 857
Women	337 497	200.16	191.59	166.35	185.42	210.89	303 476	25 294
Associations, culture and refuse disposal	31 861	214.94	209.68	176.28	198.73	234.16	30 228	28 412
Men	19 195	214.06	207.45	176.69	196.37	226.18	18 327	28 255
Women	12 666	216.57	213.83	175.25	205.91	245.15	11 901	28 706
Other activity	27 509	206.72	200.08	164.00	187.04	220.74	25 183	26 908
Men	10 453	218.87	210.49	173.06	197.06	230.60	9 752	28 748
Women	17 056	196.86	191.63	159.59	177.61	212.12	15 431	25 393

Note: The table includes all employees excluding young people under 18 and trainees.

¹ Calculated for a working week of 37 hours. ² Earnings include contributions to pension schemes.

For further information visit www.statbank.dk/lon44

Table 131

Earnings by level of education, local government. 2007

	Number employed	Per hour worked, all hourly-paid and fixed-salary workers					Per month, fixed-salary earners ¹		
		Earnings including nuisance bonus Average	Earnings excluding nuisance bonus				Number of fixed- salary earners	Earnings excluding nuisance bonus Average ²	
			Average	Lower quartile	Median	Upper quartile			
		amount in DKK						DKK	
Total	784 967	226.36	218.08	176.72	205.99	241.28	729 060	28 982	
Men	171 212	250.41	241.86	186.20	222.82	266.43	157 596	32 923	
Women	613 755	219.11	210.91	174.77	201.83	233.44	571 464	27 797	
Basic school 8-10 grade	122 301	186.41	179.78	157.10	174.52	195.36	103 678	24 035	
Men	28 408	196.54	188.96	161.74	182.70	206.04	23 974	25 563	
Women	93 893	182.99	176.67	156.14	172.25	191.26	79 704	23 514	
General upper secondary school	49 448	189.33	181.87	138.79	172.66	212.88	36 035	24 765	
Men	13 063	204.08	196.39	142.45	180.79	226.74	9 773	27 097	
Women	36 385	183.30	175.94	137.41	170.32	205.43	26 262	23 798	
Vocational upper secondary school	10 943	187.49	182.08	143.37	177.71	212.04	8 393	24 760	
Men	3 474	192.88	186.81	141.81	175.27	220.24	2 574	25 678	
Women	7 469	184.94	179.83	144.20	178.67	208.42	5 819	24 333	
Vocational education and training	229 189	204.66	194.59	169.64	186.93	209.39	218 860	25 711	
Men	38 652	218.39	209.85	177.40	200.02	227.85	36 540	28 425	
Women	190 537	201.44	191.02	168.49	184.58	205.13	182 320	25 078	
Short-cycle higher education	17 853	218.99	213.22	181.50	209.09	233.16	16 763	28 574	
Men	4 799	228.86	221.40	185.01	215.98	244.49	4 416	30 247	
Women	13 054	215.11	210.00	180.50	206.82	229.08	12 347	27 923	
Medium-cycle higher education	290 723	241.08	234.23	204.44	227.08	254.39	284 452	30 813	
Men	57 357	256.05	251.00	217.58	246.15	271.42	56 023	33 804	
Women	233 366	237.26	229.95	201.96	223.46	249.41	228 429	30 050	
Bachelor	7 347	215.93	209.19	172.13	204.44	234.97	6 162	28 385	
Men	2 428	220.53	213.35	169.43	207.16	242.66	1 961	29 726	
Women	4 919	213.71	207.18	173.40	203.16	231.67	4 201	27 771	
Long-cycle higher education	44 056	347.36	334.08	250.00	302.93	393.46	43 386	44 952	
Men	18 938	383.39	364.48	265.17	325.94	461.12	18 683	49 840	
Women	25 118	316.61	308.14	240.22	289.39	342.08	24 703	40 777	
Phd-degree	2 321	425.46	402.31	310.58	402.88	485.08	2 301	54 713	
Men	1 251	438.06	411.72	314.91	417.91	492.65	1 239	56 534	
Women	1 070	409.44	390.35	305.73	389.06	476.19	1 062	52 395	
Unknown	10 786	209.96	197.25	150.39	177.74	215.74	9 030	26 568	
Men	2 842	238.13	222.81	162.25	192.70	243.77	2 413	30 732	
Women	7 944	197.57	186.01	146.33	172.03	205.59	6 617	24 703	

Note: The table includes all employees excluding young people under 18 and trainees.

¹ Calculated for a working week of 37 hours. ² Earnings include contributions to pension schemes.

For further information visit www.statbank.dk/lon41

Table 132

Earnings by occupation, central government. 2007

	Number employed	Per hour worked, hourly-paid and fixed-salary workers					Per month, fixed-salary earners ¹	
		Earnings including nuisance bonus Average	Earnings excluding nuisance bonus				Number of fixed- salary earners	Earnings excluding nuisance bonus Average ²
		Average	Lower quartile	Median	Upper quartile			
		amount in DKK					DKK	
Total	191 178	265.35	258.94	204.01	245.09	297.48	182 176	34 884
Men	107 923	274.77	265.94	208.75	252.07	304.32	104 789	35 977
Women	83 255	252.21	249.18	199.17	233.26	287.05	77 387	33 318
Military services	22 473	256.93	240.80	188.57	223.21	272.34	22 473	32 301
Men	21 295	257.99	241.63	189.01	224.16	273.37	21 295	32 463
Women	1 178	237.15	225.44	177.10	208.23	253.55	1 178	29 284
Legislators, senior officials and managers	3 683	425.33	424.61	329.65	410.93	494.20	3 678	57 746
Men	2 352	441.79	440.96	343.28	422.64	509.07	2 350	60 295
Women	1 331	394.14	393.64	304.70	383.00	463.72	1 328	52 913
Professionals	71 290	301.80	299.19	254.00	291.02	325.86	70 986	40 407
Men	38 680	307.81	305.03	257.76	297.03	332.68	38 565	41 566
Women	32 610	294.10	291.72	248.65	283.99	317.09	32 421	38 922
Technicians and associate professionals	29 867	245.89	242.53	205.04	228.29	264.38	29 407	32 120
Men	11 582	270.71	264.54	221.03	255.19	286.71	11 361	35 585
Women	18 285	229.64	228.13	199.31	218.31	241.59	18 046	29 855
Clerks	21 976	211.88	208.95	184.97	204.25	224.81	20 522	27 471
Men	5 093	217.63	211.45	182.07	206.62	232.77	4 409	28 571
Women	16 883	210.24	208.23	185.64	203.87	223.02	16 113	27 163
Service workers and shop and market sales workers	17 367	233.08	216.44	183.50	208.25	248.52	17 166	28 704
Men	13 056	238.95	222.48	188.82	218.05	251.48	13 017	29 588
Women	4 311	213.22	196.01	170.06	188.03	212.38	4 149	25 666
Skilled agricultural and fishery workers	911	195.61	193.37	172.75	185.68	204.59	856	25 472
Men	678	192.85	190.59	172.12	183.40	202.54	654	25 361
Women	233	206.86	204.72	181.00	195.56	209.96	202	25 943
Craft and related trades workers	4 405	232.69	224.30	203.75	218.95	237.13	4 380	29 721
Men	4 061	233.33	224.45	204.23	219.41	237.62	4 043	29 778
Women	344	224.12	222.30	198.17	211.46	228.67	337	28 941
Plant and machine operators and assemblers	3 657	247.28	216.31	195.92	213.83	229.72	3 648	28 943
Men	3 469	248.04	216.60	196.78	214.13	229.79	3 460	29 005
Women	188	231.58	210.22	185.66	206.43	228.32	188	27 666
Elementary occupations	15 549	197.95	193.16	157.09	180.66	211.78	9 060	27 225
Men	7 657	212.57	205.72	173.76	192.47	223.03	5 635	27 887
Women	7 892	179.88	177.65	144.46	161.66	188.05	3 425	25 853

Note: The table includes all employees excluding young people under 18 and trainees.

¹ Calculated for a working week of 37 hours. ² Earnings include contributions to pension schemes.

For further information visit www.statbank.dk/lon32

Table 133

Earnings by industry, central government. 2007

	Number employed	Per hour worked, hourly-paid and fixed-salary workers					Per month, fixed-salary earners ¹	
		Earnings including nuisance bonus Average	Earnings excluding nuisance bonus				Number of fixed- salary earners	Earnings excluding nuisance bonus Average ²
			Average	Lower quartile	Median	Upper quartile		
		amount in DKK						DKK
Total	191 178	265.35	258.94	204.01	245.09	297.48	182 176	34 884
Men	107 923	274.77	265.94	208.75	252.07	304.32	104 789	35 977
Women	83 255	252.21	249.18	199.17	233.26	287.05	77 387	33 318
Agriculture, horticulture and forestry	787	220.95	219.68	174.12	190.86	262.67	736	29 488
Men	652	218.67	217.31	173.28	187.67	261.85	622	29 296
Women	135	236.58	235.95	185.21	211.73	285.16	114	30 837
Construction	968	249.46	219.84	186.48	208.55	238.75	963	30 210
Men	886	250.60	218.84	185.17	207.41	237.82	883	30 132
Women	82	235.03	232.51	201.97	217.04	253.36	80	31 196
Transport	14 271	255.40	234.53	190.79	217.84	252.00	13 638	31 397
Men	9 624	262.29	239.20	197.84	221.09	253.84	9 231	32 212
Women	4 647	237.12	222.15	166.95	203.07	245.31	4 407	29 233
Business activities	7 948	279.32	275.93	212.03	260.39	323.25	7 583	36 602
Men	3 888	296.19	291.66	221.68	286.65	336.53	3 725	39 168
Women	4 060	261.12	258.96	205.91	232.82	300.96	3 858	33 803
Public administration	92 773	263.90	257.04	201.62	238.51	289.02	90 923	34 179
Men	56 475	271.12	261.41	203.31	245.95	293.82	55 851	35 056
Women	36 298	252.20	249.98	199.36	227.29	280.88	35 072	32 752
Education	68 201	269.94	266.73	216.43	260.49	305.43	63 188	36 621
Men	33 546	284.93	281.18	234.21	274.02	313.94	32 074	38 558
Women	34 655	254.13	251.48	202.60	246.17	292.62	31 114	34 468
Social institutions etc.	1 122	231.98	224.52	185.88	212.48	246.69	867	30 737
Men	423	234.66	224.67	184.36	208.97	245.16	316	30 910
Women	699	230.20	224.42	188.24	215.97	249.17	551	30 626
Associations, culture and refuse disposal	4 029	244.48	242.75	193.31	225.67	277.55	3 429	33 073
Men	2 038	250.46	248.33	195.70	230.37	288.86	1 770	33 922
Women	1 991	238.08	236.79	192.37	221.64	265.87	1 659	32 138
Other activity	1 079	254.83	249.68	187.27	238.79	295.33	849	34 213
Men	391	276.57	268.46	191.22	258.21	312.79	317	37 051
Women	688	243.18	239.62	185.69	234.16	279.60	532	32 642

Note: The table includes all employees excluding young people under 18 and trainees.

¹ Calculated for a working week of 37 hours. ² Earnings include contributions to pension schemes.

For further information visit www.statbank.dk/lon34

Table 134

Earnings by level of education, central government. 2007

	Number employed	Per hour worked, hourly-paid and fixed-salary workers					Per month, fixed-salary earners ¹		
		Earnings including nuisance bonus Average	Earnings excluding nuisance bonus				Number of fixed- salary earners	Earnings excluding nuisance bonus Average	
			Average	Lower quartile	Median	Upper quartile			
		amount in DKK						DKK	
Total	191 178	265.35	258.94	204.01	245.09	297.48	182 176	34 884	
Men	107 923	274.77	265.94	208.75	252.07	304.32	104 789	35 977	
Women	83 255	252.21	249.18	199.17	233.26	287.05	77 387	33 318	
Basic school 8-10 grade	22 291	219.20	209.17	173.69	200.55	233.02	20 104	28 271	
Men	13 129	228.84	215.43	179.65	204.20	239.29	12 671	28 855	
Women	9 162	204.46	199.60	161.23	194.86	223.93	7 433	27 226	
General upper secondary school	11 024	249.15	239.95	177.33	215.09	274.98	9 698	32 679	
Men	6 907	253.14	242.31	177.79	214.67	277.02	6 349	33 027	
Women	4 117	241.67	235.50	176.01	215.70	271.50	3 349	31 997	
Vocational upper secondary school	4 488	221.41	212.35	175.63	200.46	234.11	4 151	28 502	
Men	2 683	223.44	210.38	172.92	193.55	232.87	2 512	28 515	
Women	1 805	218.50	215.16	183.90	206.20	235.59	1 639	28 483	
Vocational education and training	50 367	230.05	222.58	192.48	215.08	242.48	48 476	29 567	
Men	25 645	240.66	228.58	197.20	221.14	250.01	25 037	30 646	
Women	24 722	218.06	215.80	188.10	208.76	232.52	23 439	28 320	
Short-cycle higher education	23 902	252.15	242.50	206.26	240.34	264.19	23 528	32 186	
Men	16 810	260.21	248.69	213.14	247.68	268.40	16 636	33 188	
Women	7 092	231.70	226.82	197.51	216.91	244.14	6 892	29 625	
Medium-cycle higher education	17 018	279.68	275.00	234.18	262.04	302.61	16 479	37 106	
Men	8 978	294.61	287.98	244.23	276.02	319.55	8 767	39 146	
Women	8 040	262.36	259.94	227.48	249.77	278.85	7 712	34 722	
Bachelor	5 588	237.33	234.36	195.22	219.07	261.90	4 595	31 946	
Men	2 395	247.19	243.05	195.91	229.98	274.51	1 991	33 540	
Women	3 193	228.97	227.00	194.87	212.78	249.87	2 604	30 593	
Long-cycle higher education	46 481	322.32	319.01	271.26	305.12	343.02	45 651	43 154	
Men	24 934	332.31	328.54	278.40	310.53	356.82	24 583	44 847	
Women	21 547	309.91	307.18	263.80	298.18	328.45	21 068	41 050	
Phd-degree	6 442	336.65	336.25	288.06	317.78	359.26	6 382	45 436	
Men	4 351	340.80	340.41	291.79	320.67	368.40	4 318	46 310	
Women	2 091	327.79	327.38	281.77	310.83	344.10	2 064	43 567	
Unknown	3 577	250.65	246.96	192.34	247.61	280.37	3 112	34 451	
Men	2 091	265.88	261.46	205.53	256.69	295.50	1 925	36 040	
Women	1 486	227.54	224.98	174.90	216.27	262.51	1 187	31 756	

Note: The table includes all employees excluding young people under 18 and trainees.

¹ Calculated for a working week of 37 hours. ² Earnings include contributions to pension schemes.

For further information visit www.statbank.dk/lon31

Table 135**Total labour costs in the private sector by industry. 2007**

	Total labour costs	Other labour costs	Total earnings	Of which				
				Nuisance bonus	Sickness with pay etc.	Holiday allo- wances	Fringe benefits	Pension including ATP
DKK per hour								
Total	266.19	10.49	255.70	4.60	7.28	32.24	1.98	29.42
Manufacturing	258.39	9.59	248.81	7.62	7.94	30.41	1.68	28.50
Electricity, gas and water supply	322.95	12.24	310.70	6.59	8.20	39.02	1.88	42.36
Construction	253.74	8.87	244.87	4.30	6.17	31.94	1.34	27.44
Ws, and retail trade, hotels, restaurants	240.18	6.55	233.63	2.28	6.47	28.74	3.43	24.72
Transport, post and telecommunications	250.49	6.61	243.89	8.17	6.01	29.81	1.41	28.39
Finance and business activities	313.30	18.50	294.79	1.67	8.23	38.88	1.96	36.34
Finance and insurance	373.77	41.72	332.04	1.24	10.87	48.51	1.21	49.94
Letting and sale of real estate	265.88	14.51	251.38	1.36	7.00	33.26	2.31	27.30
Business activities	293.92	8.54	285.39	1.87	7.34	35.77	2.21	32.08
Personal services and social institutions	261.72	8.37	253.36	3.44	7.58	32.72	0.65	28.55

Note: The statistics exclude apprentices and young people below 18 years of age. Other labour costs are costs that cannot be characterized as employee's earnings. Examples are contributions to social schemes and funds, staff canteens, direct and indirect taxes calculated on the basis of the number of employees or total wage and salary costs. Total labour costs are calculated net of deductions for any subsidies, etc.

For further information www.statbank.dk/sao11

Table 136**Total labour costs in the private sector by occupation. 2007**

	Total labour costs	Other labour costs	Total earnings	Of which				
				Nuisance bonus	Sickness with pay etc.	Holiday allo- wances	Fringe benefits	Pension including ATP
				DKK per hour				
Total	266.19	10.49	255.70	4.60	7.28	32.24	1.98	29.42
Legislators, senior officials and managers	436.61	12.63	423.98	0.74	9.30	52.45	13.77	62.48
Professionals	354.97	12.86	342.12	1.46	8.87	43.84	2.11	43.58
Technicians and associate professionals	300.68	14.44	286.23	2.05	8.12	37.08	3.16	34.55
Clerks	229.20	10.68	218.52	1.62	7.10	28.39	0.56	23.69
Service workers and shop and market sales workers	190.62	5.09	185.53	4.89	5.12	22.60	0.42	17.20
Skilled agricultural and fishery workers	203.93	6.18	197.75	6.06	5.86	24.58	0.13	16.97
Craft and related trades workers	237.74	8.25	229.49	6.53	6.73	28.69	0.22	24.57
Plant and machine operators and assemblers	220.58	8.94	211.64	12.29	7.30	25.35	0.06	21.94
Elementary occupations	201.05	6.85	194.20	6.23	5.56	24.31	0.16	18.32

Note: The statistics exclude apprentices and young people below 18 years of age. Other labour costs are costs that cannot be characterized as employee's earnings. Examples are contributions to social schemes and funds, staff canteens, direct and indirect taxes calculated on the basis of the number of employees or total wage and salary costs. Total labour costs are calculated net of deductions for any subsidies, etc.

For further information www.statistikbanken.dk/sao31

Table 137

Average hours of work per week in main job. 2008

	Usual hours			Actual hours		
	Men	Women	Total	Men	Woman	Total
	hours					
Total	37.9	32.4	35.3	32.9	26.2	29.7
Age						
15-29 years	31.1	25.0	28.2	26.8	19.4	23.3
30-54 years	40.5	35.4	38.1	35.2	28.6	32.1
55-66 years	38.6	32.9	36.2	33.4	27.8	31.0
Industry						
Agriculture, fishing, quarrying	43.2	35.7	41.7	40.6	29.1	38.2
Manufacturing	38.8	34.1	37.2	33.8	27.8	31.9
Electricity, gas and water supply	39.0	36.1	38.3	33.0	32.1	32.8
Construction	40.2	33.2	39.5	34.2	27.4	33.6
Wholesale and retail trade, hotels and restaurant	34.9	27.6	31.6	31.2	22.9	27.5
Transport, storage and communication	40.7	33.7	38.8	34.9	26.5	32.5
Financial intermediation, business activities	38.8	33.7	36.7	32.9	27.7	30.8
Public and personal services	36.0	33.2	34.1	30.8	26.5	27.8
Activity not stated	37.8	17.4	30.3	31.5	14.4	24.9
Socio-economic status						
Self-employed	47.3	39.9	45.4	42.4	35.0	40.5
Assisting spouses	15.2	31.4	27.8	13.5	25.9	23.1
Salaried employees	36.7	32.1	34.5	31.7	25.8	28.8
Top managers	45.2	40.7	44.1	39.4	34.7	38.2
At upper level	39.1	36.7	38.1	33.4	29.0	31.5
At intermediate levels	38.1	34.3	35.8	32.3	26.9	29.1
At basic levels	36.3	30.5	33.4	31.6	24.9	28.3
Other employees	29.0	24.2	27.0	25.2	19.6	22.9

For further information visit www.statbank.dk/aku7, [aku8](http://www.statbank.dk/aku8) and [aku9](http://www.statbank.dk/aku9)

Table 138

Unemployed persons, and unemployed persons as a percentage of the labour force. 2008

	Unemployed persons			Unemployed persons as percentage of the labour force		
	Men	Women	Total	Men	Women	Total
	number of persons			per cent		
Total	25 272	26 007	51 279	1.7	1.9	1.8
16-24 years	2 519	2 419	4 937	1.2	1.2	1.2
25-29 years	3 008	3 417	6 425	2.2	2.7	2.4
30-34 years	3 271	4 163	7 434	2.0	2.7	2.3
35-39 years	3 174	3 758	6 932	1.8	2.3	2.0
40-44 years	3 239	3 419	6 658	1.7	1.9	1.8
45-49 years	2 714	2 533	5 247	1.6	1.6	1.6
50-54 years	2 552	2 125	4 676	1.6	1.4	1.5
55-59 years	3 000	2 687	5 687	2.0	1.9	2.0
60-64 years	1 796	1 487	3 283	1.9	2.4	2.1

Note: The figures in the table are based on information for the relevant persons at the end of December.

For further information visit www.statbank.dk/ru12207 and ras3307

Table 139

Unemployed persons by sex, age and region. 2008

	Unemployed			Unemployed in per cent of the labour force		
	Men	Woman	Total	Men	Woman	Total
	number of persons			per cent		
Denmark, total	25 272	26 007	51 279	1.7	1.9	1.8
Region Hovedstaden	9 665	9 164	18 828	2.2	2.2	2.2
Region Sjælland	3 555	3 679	7 234	1.7	1.9	1.8
Region Syddanmark	4 465	4 819	9 283	1.4	1.7	1.6
Region Midtjylland	4 478	4 911	9 388	1.3	1.6	1.5
Region Nordjylland	3 021	3 364	6 385	2.0	2.5	2.2
Denmark, total	25 272	26 007	51 279	1.7	1.9	1.8
Province København by	5 605	5 196	10 801	3.0	2.9	2.9
Province Københavns omegn	2 206	2 126	4 332	1.7	1.7	1.7
Province Nordsjælland	1 460	1 416	2 877	1.3	1.3	1.3
Province Bornholm	393	425	819	3.8	4.5	4.2
Province Østsjælland	835	842	1 677	1.3	1.4	1.4
Province Vest- og Sydsjælland	2 721	2 837	5 557	1.8	2.1	1.9
Province Fyn	2 297	2 350	4 646	1.9	2.1	2.0
Province Sydjylland	2 168	2 469	4 637	1.1	1.5	1.3
Province Østjylland	3 232	3 389	6 621	1.5	1.7	1.6
Province Vestjylland	1 246	1 521	2 767	1.1	1.5	1.3
Province Nordjylland	3 021	3 364	6 385	2.0	2.5	2.2

For further information visit www.statbank.dk/auaar01 and ras3307

Table 140

Unemployed persons as a percentage of the labour force by sex, age and region. 2008

	Men			Women			Men and women, total		
	Under 30 years	30 years +	Total	Under 30 years	30 years +	Total	Under 30 years	30 years +	Total
Denmark, total	1.6	1.8	1.7	1.8	2.0	1.9	1.7	1.9	1.8
Region Hovedstaden	1.9	2.3	2.2	1.8	2.3	2.2	1.9	2.3	2.2
Region Sjælland	1.8	1.6	1.7	2.1	1.8	1.9	2.0	1.7	1.8
Region Syddanmark	1.3	1.5	1.4	1.7	1.7	1.7	1.5	1.6	1.6
Region Midtjylland	1.2	1.4	1.3	1.5	1.7	1.6	1.3	1.5	1.5
Region Nordjylland	1.9	2.0	2.0	2.4	2.5	2.5	2.1	2.2	2.2
Province København by	2.2	3.3	3.0	2.0	3.4	2.9	2.1	3.4	2.9
Province Københavns omegn	1.5	1.7	1.7	1.7	1.7	1.7	1.6	1.7	1.7
Province Nordsjælland	1.5	1.3	1.3	1.4	1.3	1.3	1.4	1.3	1.3
Province Bornholm	2.7	4.1	3.8	3.9	4.6	4.5	3.3	4.3	4.2
Province Østsjælland	1.5	1.3	1.3	1.4	1.4	1.4	1.5	1.4	1.4
Province Vest- og Sydsjælland	1.9	1.8	1.8	2.4	2.0	2.1	2.1	1.9	1.9
Province Fyn	1.5	1.9	1.9	1.8	2.2	2.1	1.7	2.1	2.0
Province Sydjylland	1.2	1.1	1.1	1.6	1.4	1.5	1.3	1.3	1.3
Province Østjylland	1.3	1.5	1.5	1.5	1.7	1.7	1.4	1.6	1.6
Province Vestjylland	1.0	1.1	1.1	1.4	1.5	1.5	1.2	1.3	1.3
Province Nordjylland	1.9	2.0	2.0	2.4	2.5	2.5	2.1	2.2	2.2

For further information visit www.statbank.dk/auaar01 and [ras3307](#)

Table 141

Unemployed persons by sex and country of origin

	Men		Woman		Total	
	2007	2008	2007	2008	2007	2008
	number of persons					
Total	33 881	25 272	43 791	26 007	77 671	51 279
Denmark	26 873	20 177	36 165	20 919	63 038	41 095
Rest of the world, total	6 986	5 077	7 614	5 079	14 600	10 156
Of which: Western country's	1 148	832	1 443	940	2 592	1 771
Non-western country's	5 838	4 246	6 171	4 139	12 009	8 385
EU countries (EU 27)	942	664	1 102	731	2 044	1 395
Of which: Poland	124	94	274	185	398	278
United Kingdom	188	130	93	48	281	178
Sweden	107	77	190	116	297	194
Germany	184	130	177	121	361	251
Europe ekscl. EU 27, total	2 163	1 593	2 507	1 646	4 669	3 240
Of which: Bosnia and Herzegovina	205	152	282	161	486	312
Yugoslavia (former)	268	183	286	182	554	365
Norway	74	53	170	91	243	144
Turkey	1 383	1 030	1 324	898	2 707	1 928
Africa, total	1 052	826	930	645	1 982	1 471
Of which: Somalia	453	377	423	284	876	661
North America, total	68	54	61	35	128	89
South and Central America, total	106	88	163	108	268	196
Asia, total	2 608	1 822	2 822	1 893	5 429	3 715
Of which: Iraq	615	435	515	350	1 130	785
Iran	291	186	202	138	494	324
Lebanon	373	276	350	219	724	495
Pakistan	409	273	442	302	851	574
Sri Lanka	102	83	163	101	265	184
Viet Nam	161	117	241	172	402	289
Oceania, total	16	11	9	6	25	17
Stateless	15	9	9	8	24	17
Unknown	17	9	12	8	29	17
Unknown country of origin	22	18	11	10	33	27

For further information visit www.statbank.dk/auaar03

Table 142

Insured persons unemployed by sex and unemployment insurance fund. 2008

	Insured persons unemployed			Rates of unemployment in per cent		
	Men	Women	Total	Men	Women	Total
Total	20 875	21 459	42 333	2.0	2.1	2.1
Academics (AAK)	657	879	1 537	2.0	2.1	2.1
Business	297	102	399	1.4	2.2	1.6
Builder	325	83	409	2.4	2.9	2.5
Early Childhood Teachers & Youth Educators	129	656	785	1.6	1.4	1.4
Danish Employees (DLA)	615	575	1 190	1.8	2.2	2.0
Danish Health Organizations (DSA)	17	201	218	0.4	0.3	0.3
Electrical Trade	113	2	115	0.5	0.9	0.5
Trade and labour (FOA)	319	1 833	2 153	1.6	1.3	1.3
General Workers (3FA)	6 648	4 162	10 810	3.7	4.9	4.1
Independent Employees (FFA)	93	177	270	1.2	1.3	1.3
Salaried Employees and Service Ind.	245	91	336	1.8	2.0	1.8
Salaried Employees and Public Servants (FTF-A)	770	1 043	1 813	1.6	1.4	1.5
Commercial and Clerical Employees (HK)	1 316	3 797	5 113	2.4	2.1	2.2
Engineers (IAK)	545	172	718	1.0	1.6	1.1
Computer Professionals (PROSA)	160	48	207	1.7	1.5	1.6
Journalism, Communications and Languages	272	476	748	3.9	3.9	3.9
The Christian Unemployment Fund	1 935	2 321	4 256	2.3	2.7	2.5
Managers and Executives	501	198	699	0.8	1.1	0.9
School teachers (DLF-A)	266	623	889	1.2	1.3	1.3
Masters (MA)	796	1 188	1 984	3.5	4.3	4.0
Metal Workers	1 146	76	1 222	1.4	2.9	1.4
Danish Food and Allied Workers (NNF)	392	294	686	2.5	3.8	2.9
Workers in Social Education (SLA)	108	339	447	1.4	1.4	1.4
Self-employed Persons (DANA)	341	192	534	1.4	1.7	1.5
Self-employed Persons (ASE)	1 068	870	1 938	1.2	1.9	1.4
Government Officials and Telecom. Workers (STA)	181	150	331	0.9	1.5	1.1
Technicians and Engineers	262	468	730	1.9	3.7	2.7
Wood, Industry and Building Workers (TIB)	1 017	188	1 205	2.7	4.5	2.9
Business Economists (CA)	340	253	592	1.9	1.9	1.9

Note: The number of insured persons is measured at the end of the year, excl. persons on transitional allowances and voluntary early-retirement pay.

Table 143**Unemployment benefits, early retirement pay and transitional allowance**

	2007	2008
Average number of people receiving unemployment benefits	61 100.0	39 447.0
Unemployment benefits paid (excl. holiday pay), in DKK mio.	10 406.6	6 945.1
Benefits paid, DKK mio.	11 595.5	7 943.2
Early retirement pay paid, DKK mio. ¹	20 618.6	21 896.0
Transitional allowances paid, DKK mio.	0.2	0.0
Net grants from central government: DKK mio.	19 322.5	16 710.5
Percentage of total paid	60.0	56.0

¹ Excl. tax-exempt premium paid out.

Source: The National Directorate of Labour.

Table 144**Recipients of unemployment benefits by reason for unemployment.
2008**

	Men	Women	Total
Total	25 272	26 007	51 279
Recipients of social assistance	5 897	5 935	11 832
Recipients of unemployment	19 375	20 072	39 447
Of which: Made redundant by employer	13 178	11 007	24 185
Temporarily sent home	103	67	170
Resigned	888	1 627	2 515
Certificate of release work sharing	46	104	149
School leaver or completed national service	942	1 457	2 399
Completed activation	1 321	1 891	3 212
Education, parental or maternity leave	327	766	1 093
Temporary absence from the labour market	206	592	798
Stopped self-employment	550	429	979
Other	1 754	2 017	3 772
Reason for unemployment unknown	60	115	175

For further information visit www.statbank.dk/auh01

Table 145

Persons who are not in ordinary employment. 2008

	Men			Women			Total		
	Under 30 years	30 years +	Total	Under 30 years	30 years +	Total	Under 30 years	30 years +	Total
	number of full-time participants								
Total	23 995	88 743	112 738	27 940	115 433	143 373	51 935	204 176	256 111
Registered unemployed persons, total¹	5 723	20 054	25 777	5 881	20 025	25 906	11 604	40 079	51 683
Unemployed recipients of unemployment benefits ¹	3 412	16 398	19 809	3 114	16 873	19 986	6 525	33 270	39 795
Unemployed recipients of social assistance ¹	2 312	3 656	5 968	2 767	3 152	5 920	5 079	6 809	11 888
Persons receiving holiday benefits	218	1 468	1 685	576	3 214	3 790	794	4 682	5 476
Guidance and activities upgrading skills, total	5 589	11 788	17 377	6 385	18 138	24 523	11 974	29 926	41 900
Guidance and clarification activities (s)	71	466	538	77	553	630	149	1 019	1 168
Guidance and clarification activities (k)	1 270	2 823	4 093	1 383	3 493	4 876	2 653	6 316	8 969
Specially adapted projects and educational activities (s)	10	45	54	10	54	64	20	99	119
Specially adapted projects and educational activities (k)	3 284	5 413	8 697	3 420	7 399	10 818	6 704	12 811	19 515
ordinary education (s)	292	1 758	2 051	479	3 837	4 316	771	5 595	6 367
Ordinary education (k)	582	1 191	1 773	926	2 630	3 556	1 508	3 820	5 329
Special activities upgrading skills (k)	79	92	172	90	172	262	169	265	434
Subsidized employment, total	5 443	31 761	37 204	3 601	40 203	43 805	9 045	71 964	81 009
Business in-service training ² (s)	29	168	198	46	245	291	75	414	489
Business in-service training (k)	800	1 954	2 754	921	3 116	4 037	1 721	5 070	6 791
Employment subject to wage subsidies (s)	260	2 045	2 305	383	2 758	3 141	643	4 803	5 446
Employment subject to wage subsidies (k)	391	823	1 214	202	603	805	593	1 426	2 019
Flex jobs ³	1 091	19 266	20 357	620	28 631	29 250	1 711	47 897	49 608
Sheltered jobs ³	340	2 711	3 051	170	2 001	2 171	510	4 713	5 222
Service jobs ⁴	0	194	194	0	330	330	0	524	524
Adult apprenticeship support	2 533	4 599	7 132	1 259	2 519	3 779	3 792	7 119	10 911
Integration education, total	284	479	764	564	1 099	1 663	848	1 578	2 426
Danish lessons (k)	257	458	715	527	1 058	1 585	784	1 516	2 300
Separately planned Danish lessons (k)	28	21	49	37	40	77	65	62	126
Child-care leave, etc. total	10	427	437	45	1 566	1 611	55	1 994	2 049
Parental leave ⁵	3	412	415	37	1 548	1 585	40	1 960	2 000
Experiments (k)	7	15	22	8	18	27	15	34	49
Other social benefits, total	6 727	22 768	29 494	10 888	31 188	42 075	17 614	53 955	71 569
Social assistance	5 932	18 504	24 437	9 732	21 786	31 518	15 665	40 291	55 955
Introductory benefits	146	279	425	210	415	625	356	694	1 050
Other rehabilitation	496	1 434	1 930	771	3 481	4 253	1 267	4 916	6 183
Unemployment benefits	153	2 550	2 702	174	5 505	5 679	327	8 055	8 381

Note: Excl. early retirement pay, disability pension, sickness benefit and maternity leave.

¹The number of registered unemployed differ slightly from table 138-145 due to different reference period (from 16-12-2007 to 21-12-2008) and calendar year in this table. ² Persons participating in job training may also be included. ³ The calculation of the number of full-time recipients is here exclusively conducted on the basis of reductions in relation to the number of full days recipients have participated in subsidized employment during the quarter. ⁴ Additions to *service jobs* were discontinued at the beginning of 2002. ⁵ Can only be granted to children born or adopted before 27 March 2002. The numbers are underestimated due to incomplete registration in fourth quarter of 2008.

For further figures and information visit www.statbank.dk/auh01

Table 146

Persons who are not in ordinary employment by region. 2008

	Men			Women			Total		
	Under 30 years	30 years +	Total	Under 30 years	30 years +	Total	Under 30 years	30 years +	Total
number of full-time participants									
Denmark, total	23 995	88 743	112 738	27 940	115 433	143 373	51 935	204 176	256 111
Region Hovedstaden	6 761	27 709	34 469	7 360	31 748	39 107	14 120	59 456	73 577
Region Sjælland	3 289	12 151	15 440	4 123	16 281	20 403	7 411	28 432	35 843
Region Syddanmark	5 351	19 530	24 881	6 476	26 614	33 089	11 827	46 144	57 970
Region Midtjylland	5 514	18 848	24 362	6 511	26 775	33 286	12 025	45 624	57 649
Region Nordjylland	2 926	9 813	12 739	3 323	13 477	16 800	6 249	23 290	29 538
Province København by	3 525	15 055	18 580	3 795	15 293	19 088	7 320	30 348	37 668
Province Københavns omegn	1 916	6 926	8 842	2 120	8 869	10 989	4 036	15 795	19 831
Province Nordsjælland	1 137	4 672	5 808	1 209	6 355	7 565	2 346	11 027	13 373
Province Bornholm	183	1 056	1 239	236	1 230	1 466	419	2 286	2 705
Province Østsjælland	698	2 711	3 409	791	3 887	4 678	1 489	6 598	8 088
Province Vest- og Sydsjælland	2 591	9 440	12 031	3 331	12 394	15 725	5 922	21 834	27 756
Province Fyn	2 288	8 958	11 245	2 656	11 588	14 244	4 944	20 546	25 490
Province Sydjylland	3 063	10 572	13 636	3 820	15 026	18 845	6 883	25 598	32 481
Province Østjylland	3 860	13 265	17 124	4 562	18 707	23 269	8 421	31 972	40 393
Province Vestjylland	1 654	5 584	7 238	1 949	8 068	10 018	3 604	13 652	17 256
Province Nordjylland	2 926	9 813	12 739	3 323	13 477	16 800	6 249	23 290	29 538

Note: Excl. early retirement pay, disability pension, sickness benefit and maternity leave.

For further information visit www.statbank.dk/auk01

Table 147 (page 1 of 2) **Membership of employees' trade unions. 2009**

	Number of members			Number of members	
	Total	Of whom women		Total	Of whom women
1 January					
Danish Confederation of Trade Unions (LO)¹	1 224 108	600 431	Danske Afspændingspædagoger	787	748
			Association of Medical Laboratory Technologists	5 512	5 216
Plumbers' Organisation in Denmark	8 460	26	Organisation of Danish Insurance Employees	7 065	5 269
The Danish Artist Union	1 387	590	The Danish Physiotherapist Association	8 544	6 661
Danish Union of Electricians	29 923	291	Danish Association of Occupational Therapists	5 946	5 667
Danish Hairdressers' and Beauticians' Union	4 969	4 769	Danish Pharmacopeia Commission	4 421	4 377
Danish Railway Union	5 870	857	Danish Film and TV Workers' Union	746	298
Danish Metal Workers' Union	128 888	5 716	The Financial Services' Union	47 221	25 563
The Danish Federation of Salaried Employees	17 864	4 357	Foreningen af Mejeriledere og Funktionærer	505	64
Fagligt Fælles Forbund	332 835	109 712	The Radiographers' Union in Denmark	1 394	1 003
Danish Trade Union of Public Employees	202 242	177 788	Ass. of Teachers for Private Independent Schools	8 420	5 215
Wood Industry and Building Workers' Union	63 767	6 725	Funktionærforeningen Carlsberg Tuborg	817	301
Union of Commercial and Clerical Employees in Denmark	320 150	238 668	Funktionærforeningen i FDB/COOP Danmarks	544	215
Union of Enlisted Privates and Corporals in the Danish Army	5 003	301	Halinspektørforeningen	562	33
Union of Painters in Denmark	12 336	3 432	JID	1 201	372
Danish Food and Allied Workers' Union	27 845	9 154	Jordmoderforeningen	1 465	1 460
National Federation of Social Educators	34 211	25 658	Danish Association of Constructing Architects	3 753	593
Spillerforening	831	91	Kort- og Landmålingsteknikernes Forening	625	188
Danish Association of Professional Technicians	27 527	12 296	Kost og Enæringsforbundet	6 941	6 808
			Københavns Kommunale Embedsmandsforening	571	280
Salaried Employees' and Civil Servants' Confederation (FTF)	357 845	244 978	Landsforeningen af statsaut. Fodterapeuter	1 320	1 254
			Lederforeningen i TeleDanmark	1 205	504
Attorfillit Kattuffiat, Greenland	779	456	Lederforum – Social & Sundhedssektoren	726	660
Federation of Early Childhood Teachers	53 601	43 953	Association of Academy and Market Economists	1 180	637
CO II – group in FTF	24 394	8 053	PROSA – Association of Computer Professionals	8 362	1 331
Of which:			SAFU Association of Salaried Employees	1 418	752
Danmarks Kordegneforening	544	390	Uddannelsesforbundet	8 773	3 623
Dansk Kirkemusiker Forening	399	279	Other unions	4 766	2 147
Dansk Told- og Skatteforbund	4 662	2 564	Danish Association of Managers and Executives	79 585	18 373
Erhvervsskolelederne i Danmark	501	114	Danish Association of Managers and Executives	79 585	18 373
Foreningen af Præliminære Organister	637	304			
Association of Technical and Administrative Public Employees	1 000	523			
Union of Public Servants within Armed Forces	1 249	258			
Association of Commercial College Teachers	1 574	775			
The Police Union in Denmark	11 694	2 050			
Trafikforbundet	731	211			
Other unions	1 403	585			
Cabin Union Denmark	1 622	1 161			
Association of Permanent Defence Personnel	6 108	388			
The Danish Union of Teachers	66 570	46 276			
Danish Musicians' Union	3 000	660			
Danish Actors Association	1 662	889			
Danish Association of Social Workers	10 398	8 846			
Danish Nurses' Organisation	53 825	51 995			
Dansk Tandplejerforening	1096	1062			

Note: Figures are exclusive Danmarks Frie Fagforening, due to lack of data reports.

¹ Incl. sleeping members (pensioners and people on early-retirement pay), conscripts, etc. ² Only employees. ³ Incl. 1548 members with double membership under Confederation of Professional Associations (AC)

Source: Main organizations and unions outside of the main organizations.

Table 147 (page 2 of 2) **Membership of employees' trade unions. 2009**

1 January	Number of members			Number of members	
	Total	Of whom women		Total	Of whom women
Confederation of Professional Associations (AC)²	133 212	69 010	Outside joint organisations	260 112	100 765
Federation of Danish Architects	4 529	2 129	Brancheafdelingen Trafik & Jernbane	3 359	1 680
Danish Union of Librarians	4 119	3 183	Business Danmark	29 681	5 225
Association of Danish Lawyers and Economists	9 273	3 428	Dansk Formands Forening	1 287	28
Danish Union of Journalists	1 548	619	Danish Prison Officers' Union	3 326	1 051
Dansk Musikpædagogisk Forening	817	443	Danish Union of Journalists ³	11 492	4 755
The Association of Food Scientists in Denmark and the Danish Veterinary Surgeons	1 651	933	Den Danske Landinspektørforening	856	639
Defence group in AC	3 554	144	Fagforeningen Danmark	31 884	11 886
National Union of Upper Secon. School Teachers	10 915	5 652	Forbundet af Kirke- og Kirkegårdsansatte	1 581	700
Danish Federation of Graduates in Agriculture, Horticulture, Forestry and Landscape Architecture	3 625	1 669	Forbundet for Tjenestemænd ved Fødevarer- og Undervisningsministeriet m.fl.	455	55
Jurist- og Økonomforbundet	32 437	15 522	Funktionærkartellet/Teknikersammenslutningen	23 802	12 741
Communications and Languages	5 560	5 104	Ingeniørforeningen i Danmark	47 764	8 777
Danish Medical Association	15 303	6 718	Kristelig Fagforening	97 715	53 184
Danish Association of Masters and PhDs	26 327	14 588	Maskinmestrenes Forening	6 910	44
Pharma-Danmark	3 388	2 607			
The Danish Association of Clergy	2 530	1 265			
Danish Psychologists' Association	4 317	3 200			
Tandlægeforeningen	1 505	771			
Tandlægerne Ny Landsforening	754	633			
Other unions	1060	403			

Table 148 **Members of unemployment insurance funds**

	2008 ¹	2009 ¹
Number of funds	29	29
Number insured against unemployment, total	2 086 488	2 058 623
Full-time insured	2 061 776	2 035 801
Of which: LO ²	978 993	941 608
FTF ³	335 300	331 286
Managers ⁴	79 201	81 362
AC ⁵	237 719	242 498
Other organizations ⁶	430 563	439 047
Part-time and combination-insured	24 712	22 822
Of which: LO ²	13 122	11 865
FTF ³	4 165	3 810
Managers ⁴	32	35
AC ⁵	649	629
Other organizations ⁶	6 744	6 483

¹ Figures are from 1 January. ² Danish Confederation of Trade Unions. ³ Salaried Employees' and Civil Servants' Confederation. ⁴ Danish Association of Management and Executives. ⁵ Danish Confederation of Professional Organisations. ⁶ Incl. unemployment insurance funds which are members of different confederations.

Source: The National Directorate of Labour.

For further informations visit www.statbank.dk/04

Table 149

Work stoppages

	Work stoppages		Number of employees involved		Number of working days lost	
	2007	2008	2007	2008	2007	2008
	Number					
Total	862	335	61 113	91 409	91 700	1 869 100
Agriculture, fishing and quarrying	-	-	-	-	-	-
Manufacturing, total	306	138	24 599	10 813	39 900	14 300
Manufacture of food, beverages and tobacco	40	16	2 644	759	3 600	900
Mfr. of textiles and leather	2	-	65	-	-	-
Mfr. of wood products, printing and publ.	28	6	1 154	96	5 900	300
Mfr. of chemicals and plastic products	22	11	899	716	1 900	800
Mfr. of other non-metallic mineral products	18	13	1 143	1 071	2 100	1 400
Mfr. of basic metals and fabricated products	169	80	17 884	7 616	25 100	10 000
Mfr. of furniture, manufacturing n.e.c.	27	12	810	555	1 300	1 000
Electricity, gas and water supply	-	-	-	-	-	-
Construction	103	33	2 751	795	4 200	1 000
Wholesale and retail trade	106	40	4 097	2 365	6 500	4 000
Hotels and restaurants	4	1	479	21	-	-
Transport, post and telecomm.	214	68	8 407	4 962	19 000	9 000
State, counties and municipalities	80	41	17 400	72 041	18 600	1 839 500
Other	49	14	3 380	412	3 500	1 300
Activity not stated	-	-	-	-	-	-

For further information visit www.statbank.dk/abst1