

TWINNING CONTRACT

Support to Statistics

Kosovo



MISSION REPORT

on

**Information Technology System and Dissemination
Development of Dissemination Database II**

Component no 4.5.2

Mission carried out by
Jesper Ellemose Jensen and Annegrete Wulff, Statistics Denmark
9-12 September 2014

IPA 2012

Author's name, address, e-mail (keep the relevant information)

*Annegrete Wulff
Statistics Denmark
Sejrøgade 11
DK-2100 Copenhagen Ø
Denmark
Tel: +45 39173155
Email: awu@dst.dk*

*Jesper Ellemose Jensen
Statistics Denmark
Sejrøgade 11
DK-2100 Copenhagen Ø
Denmark
Tel: +45 39173244:
Email: jej@dst.dk*

Table of contents

Executive Summary	4
1. General comments.....	5
2. Assessment and results.....	5
3. Conclusions and recommendations	7
Annex 1. Terms of Reference	9
Annex 2. Program, - September 2014	12
Annex 3. Persons met.....	13
Annex 4. Creation of PX-File with two digit trade statistics.....	14

List of Abbreviations

KAS	Kosovo Agency for Statistics
ToR	Terms of Reference

Executive Summary

This activity was originally scheduled and planned to be co-located and conducted side by side to an activity regarding Geographic Information Software. As the KAS staff member on GIS was not available for the scheduled period this part of the ToR was canceled. The activities regarding GIS will be carried out at a later time- but most likely not before early 2015.

It was agreed that staff from IT and Dissemination units should present a prototype of the PX-Web solution on the user meeting to be conducted by KAS on October 22.

It is stressed by the consultants that IT and Dissemination can't make an internet database alone. It must be made in corporation with the statistical subject matter units. It is therefore imperative that KAS creates a project group that takes responsibility for the procedures, coordination and availability of data.

On the KAS website data is currently available as old fashion PDF publications and as Excel files. The Excel files are not updated to the same time as the Excel files. This reflects badly on the public image and professionalism of KAS. KAS is therefore encouraged to either remove the Excel files totally or make sure they are simultaneously updated with the same content / periods as the PDF files. When the database is ready the Excel files should be removed totally.

Annex 4 contains a detailed step by step description of the work need to produce PX-files with trade data. PX-files and the basic excel files used in the Annex 4 example are part of the report, but will not be published on the project website- www.dst.dk/kosovo.

1. General comments

This mission report was prepared within the Twinning Project „Support to Statistics”. It was the second mission to be devoted to Improvement of Internet Dissemination (4.5.2) within Component 4 of the project.

The concrete objectives of the mission were:

- Finalising the PX-Web pilot installation.
- Quality assurance of produced files. During activity 4.5.1 it was agreed that KAS should install PX-web on a virtual web server. BC and MS staff will finalize this installation. A number of files were produced (see Annex to mission report from 4.5.1 - Ellemose Jensen and Wulff.) these files will be further developed. Currently trade data for Kosovo is also disseminated by the customs and tax authority. The functionality of this solutions will also be discussed
- The mission was planned to be a mixed mission with the GIS 4.3.2. However the GIS part did not take place because of other activities by the KAS GIS expert.

The consultant would like to express their thanks to all officials and individuals met for the kind support and valuable information which he/she received during the stay in Kosovo, and which highly facilitated the work of the consultant.

This views and observations stated in this report are those of the consultants and do not necessarily correspond to the views of EU, KAS or Statistics Denmark.

2. Assessment and results

Training during the activity

During the mission the KAS staff was trained in the production routines for creating tables from Excel. Editing metadata in PX-Edit, adding footnotes and cell notes and creating multi lingual files was discussed and demonstrated.

Language

For political and strategic reasons statistical tables and the user interface of the web application should be available in 3 languages (Albanian, Serbian and English). A translation of the user interface into Albanian is most likely to be available from the Albanian Statistical office. The user interface has been translated into Serbian in a Twinning project with the statistical offices in Bosnia-Herzegovina. However this translation is based on the Serbian Cyrillic charset. For various reasons the Serbian Cyrillic translation is not applicable to the situation in KAS. KAS must either translate the interface themselves to Serbian Latin or if the no resources are available the Twinning project can source an external translator to do the work. However the translation must then be tested and correct by someone in Dissemination / IT to ensure that the translation is appropriate for the context.

Central administration

It was discussed and agreed that a central administration of the database is required, and that the statistical units are expected to create and be responsible for the data files and the continuous updates. The metadata will be created in cooperation between the statistical production units and the PX-Web database administrator.

Standardised metadata

In order to get standardised metadata it was suggested that a list with global variables (municipalities, settlements, age, sex etc.) is agreed where codes and spelling of the single values are unique. This is

important to keep coherence across the database. More examples of not unique codes or texts were discovered during the work with creating PX-files from the Excel files found on the KAS website.

This type of inconsistencies in public available data needs to be found and to be fixed as soon as soon as possible. PX-Edit is an excellent tool as it clearly identifies this type of inconsistencies.

The standard list of metadata must of course be prepared in the 3 different languages (Albanian, Serbian – Latin and English) required by KAS.

Content of initial PX-Web database - CPI

It was agreed to start the building of the PX-web database with the most used statistics: monthly CPI and External Trade. During the mission an example of a CPI table (without data) was created in Albanian and English.

Content of initial PX-Web database -Trade

KAS produces foreign trade statistics using the EuroTrace soft¹.

The import/export table with about 200 countries and 98 commodities was prepared, so was the 8 digits HS commodities with import/export for 2 years taken from EuroTrace. It was demonstrated how a table can be updated with a new period.

The active use of the keyword Elimination was exemplified, meaning that a variable is eliminated, and the user do not need to make selections from that (Typical a total will give the eliminated value).

Trade is usually disseminated at 2, 4, 6 and 8 digit levels. Data at the 2 digit level can easily be converted to PX-Web and presented on the internet. Extracting data at a more detailed level (4,6, and 8 digits) is more difficult and time consuming mainly due to the lack of performance from the Eurotrace software. A detailed example of creating a PX-file with two digit foreign trade data is attached to this report as Annex4.

Content of initial PX-Web database –Census data

It was discussed from which sources it would be best to get data to describe the population in Kosovo. Data from the 2011 Population and Housing Census is available from the KAS website in a system known as DaWinci. As this solution is not particularly user friendly user would benefit from this data being available in PX-Web.

Retrieving data from the existing DaWinci database is not a solution, as the data cannot be retrieved into one single file. Instead a file from each municipality/settlement must be created which is both time consuming and a source for errors. It will therefore be more efficient to go back to the source / original data that was originally loaded into DaWinci.

Virtual Server

PX-Web was installed on a virtual server at KAS. This installation will allow It and Dissemination units to showcase the solution to other staff members of KAS,

The database was prepared with KAS logo and subject area folders (12, however, only two will hold tables so far).

Differences on current website

When looking for data on CPI in a machine readable form on the KAS website English speaking users will find this amount of information.

¹ Eurotrace software is provided by Eurostat free of charge for collection, cleaning and compilation of trade statistics.

REPUBLIC OF KOSOVO
OFFICE OF THE PRIME MINISTER
KOSOVO AGENCY OF STATISTICS

Home Publications Metadata Latest news FAQ Sitemap About KAS

Statistics by theme

- » Agriculture
- » Education
- » Environment
- » Energy
- » External trade
- » Health
- » Justice
- » Hotel statistics
- » Household Budget Survey
- » National account
- » Labour market
- » Prices
- » Metadata
- » **Tables**

CPI tables

- » ANNUAL CONSUMER PRICE INDEX (CPI) CHANGES IN PERCENT 2002-2011 May 2002=100
- » AVERAGE PRICES IN EURO FOR SOME GOODS AND SERVICES INCLUDED IN THE CPI 2002 - 2011
- » CONSUMER PRICE INDEX MAY 2002 - DECEMBER 2012 ,MONTHLY AND ANNUAL CHANGES OF PRICES IN PERCENT
- » CONSUMER PRICE INDEX MAY 2002 - DECEMBER 2012 ANNUAL CHANGES OF PRICES IN PERCENT
- » ANNUAL CONSUMER PRICE INDEX FOR GROUPS AND SUBGROUPS TO COICOP 2002-2011 May 2002=100

Last updated 25.07.2012

Indicating that no data has been published since the middle of 2012.

However the english speaking users consults the list of publications this is the available information.

REPUBLIC OF KOSOVO
OFFICE OF THE PRIME MINISTER
KOSOVO AGENCY OF STATISTICS

Home Publications Metadata Latest news FAQ Sitemap About KAS

Statistics by theme

- » Agriculture
- » Education
- » Environment
- » Energy
- » External trade
- » Health
- » Justice
- » Hotel statistics
- » Household Budget Survey
- » National account
- » Labour market
- » Prices
- » Metadata

Consumer Price Index

Publications by theme

Publication	Files
Consumer Price Index 2014	8
Consumer Price Index 2013	12
Consumer Price Index 2012	11
Consumer Price Index 2011	13
Consumer Price Index for 2010	12
Consumer Price Index for 2009	12
Consumer Price Index for 2008	12
Consumer Price Index for 2006	12

Shqip English Srpski

DO NOT MISS...

- » External Trade Statistics July 2014
- » Output Price Index and Prices in Agriculture Q2-2014
- » Kosovan Migration
- » External Trade 2013
- » Quarterly Bulletin July 2014

It is of course positive that the CPI is published every month and available on the internet as PDF. But it's nearly impossible for users to use the CPI in their own calculations over time as it is simply impossible to extract the data from the PDF documents. That the PDF files and Excel files are not in sync confuses the users and KAS look uncoordinated. It is important that Dissemination and the subject matter units take a common responsibility to ensure that data is updated and of the highest quality.

3. Conclusions and recommendations

The KAS staff shows interest and competence in setting up the software, the server as well as understanding what's necessary to create tables for an output database.

What is needed is an organisation around the cooperation with the statistical units, who will be responsible for updating the internet files.

It should not be neglected, as the on-line service is/will be the far most interesting for the users to consult if the need to work with data. Today the pdf-publications are more updated in files on the web.

KAS should strive having 2-4 tables ready for demonstration at the user meeting currently scheduled for 22 October 2014.

Next mission is expected in the beginning of 2015

It, statistical units and Dissemination Planning group established	25 September	Meets once a week until end December, then monthly to follow up plans and development
Standard lists of structural metadata agreed	1 October	
Prioritising the input tables	25 September	
4 tables ready for demo	15 October	
PX-web interface in Albanian		
PX-web interface in Serbian (latin)		The project could pay translation

Annex 1. Terms of Reference

Terms of Reference:

Component 4: Information Technology System and Dissemination

Activity 4.3.2a&4.5.2: Combined mission: 1. Strategy for presentation of geographic information and 2. Development of Dissemination Database II – Organization of workflows and update procedures

Scheduling:

Tor –ready date: 1 September 2014

Start / end of activity: 9 September – 12 September 2014

Reporting time: 19 September 2014

Mandatory result of the component:

Mandatory Result	Intervention logic	Benchmarks	Sources of information	Assumptions
Mandatory Result 4.2, 4.3, and 4.5.2	Developing IT system and Web dissemination Development of Dissemination Database	<ul style="list-style-type: none"> KAS website and its user-friendliness improved by 8th project quarter Dissemination database installed and available to the public by 7th project quarter. Mission report uploaded on project homepage Recommendations on future work discussed and work plan updated Description of workflows / work share between IT staff, Dissemination staff and subject matter statisticians discussed 	<ul style="list-style-type: none"> KAS website Dissemination database Twinning quarterly reports Mission Reports 	<ul style="list-style-type: none"> Sufficient absorption capacity Functioning IT-technology Low turn-over of staff involved in implementation Staff works on project related tasks in between missions

Subject / purpose of activity: 4.3.2a activity

Description of current state of play regarding the use of GIS software to improve dissemination via the website.

Expected output of the 4.3.2a activity

Activity 4.3.2a will ensure the following outputs:

Mission report with detailed review of the current and future use of GIS software for dissemination at KAS and recommendations on future work. KAS will brief the MS experts on the current strategy for the use of GIS within KAS.

KAS will brief the MS experts on the current technical platform used for GIS and problems that may be associated with it

The MS -experts will brief KAS staff on Member States strategies on GIS and on Eurostat plans for this issue.

KAS and the MS representatives will generate a roadmap agreeing on the strategy for the use of GIS in the future years.

Subject / purpose of activity: 4.5.2 activity

Finalising the PX-Web pilot installation. Quality assurance of produced files. During activity 4.5.1 it was agreed that KAS should install PX-web on a virtual web server. BC and MS staff will finalize this installation. A number of files were produced (see Annex to mission report from 4.5.1 - Ellemose Jensen and Wulff.) these files will be further developed. Currently trade data for Kosovo is also disseminated by the customs and tax authority. The functionality of this solution will also be discussed.

Updated work plan for the implementation of the dissemination database. Description of workflows and work share between IT, dissemination and subject matter statisticians

Expected output of the 4.5.2 activity

Activity 4.5.2 will ensure the following outputs:

KAS and the MS representatives will agree on an updated work plan for the implementation of the dissemination database. Including who will do what before the next mission.

The plan must ensure that a demonstration version of PX-Web version data on trade and consumer prices can be made externally available before the end of November 2014.

KAS resources:

1. Mr. Burim Limolli, Head of IT - Division, burim.limolli@rks-gov.net KAS
2. Mr. Idriz Shala, GIS expert, idrizz.shala@rks-gov.net, KAS
3. Mr. Dardan Gjoshi, IT Administrator, dardan.gjoshi@rks-gov.net, KAS
4. Mr. Mentor Shala, Software Developer, mentor.shala@rks-gov.net, KAS
5. Mr. Liridon Uka, IT Expert, liridon.uka@rks-gov.net, SIDA
6. Ms. Hazbije Qeriqi, Communication Officer, hazbije.qeriqi@rks-gov.net, KAS
7. Ms. Drita Sylejmani, Dissemination Officer, Drita.sylejmani@rks-gov.net, KAS

KAS Twinning team:

Project Leader Mr. Ilir T. Berisha, Director of Economic Statistics and National Accounts, Ilir.T.Berisha@rks-gov.net

RTA Counterpart Ms. Teuta Zyberi, International Relations Officer, teuta.zyberi@rks-gov.net

Member state resources:

Ms Annegrete Wulff, Head of Division, Statistics Denmark, awu@dst.dk

Mr Jesper Ellemose Jensen, Chief Adviser, Statistics Denmark, jej@dst.dk

Mr Troels Vestergaard, Head of Section, Statistics Denmark, tav@dst.dk

Twining resources:

Mr Per Knudsen, RTA, pkn@dst.dk

Ms Nora Zogaj, RTA assistant, nzogaj@yahoo.com

Background

The AGA report 2012 states that there is a strong need to improve KAS' website to make it a more user-friendly and flexible dissemination tool.

Component 4 within the Twinning Project has three mandatory results to meet these needs:

Tender specification for internal network (Handled by SIDA)

KAS website and user friendliness improved

Dissemination Database installed and available

In general the activities in component 4 will address the following issues:

- Improve web dissemination for selected statistics including improvement of ASK' website to make it a more user-friendly and flexible dissemination tool;
- Develop guidelines for the design of tables and graphs, also to be applied for dissemination on the web;
- Develop a dissemination database, including more complete metadata covering different aspects related to data quality;
- Develop a strategy and recommendations for presentation of geographic visualizing statistics
- Updated work plan for the implementation of the dissemination database
- Description of workflows and work share between IT, dissemination and subject matter statisticians

Activities to be undertaken in preparation for the mission:

List of attached documents

- Adapted Global Assessment report (AGA)
- Program of official statistics 2013 -2017
- Strategic Development Plan 2009- 2013
- Swedish Support to Statistics development at the Kosovo Agency of Statistics
- ICT in the Kosovo National Statistical System – Baseline review and Recommendations for development (Dekker)

Annex 2. Program, - September 2014

Day	Place	Time	Event
1	KAS	09:30	Introductory remarks to this part of component 4
		09:45	KAS will brief the experts on the current state of the use of GIS within KAS
		10:30	Coffee
		11:00	KAS will have a presentation about National Geoportal
		11:30	Lunch
		13:00	MS; GIS in Statistics Denmark- the organization of the work and the data sources.
		14:30	Coffee
		15:00 – 16:00	Preparing the program for the rest of the week
2	KAS	09:00-16:00	Continued development of Dissemination Database Continued knowledge sharing on GIS subjects
3	KAS	09:00-16:00	Continued development of Dissemination Database Continued knowledge sharing on GIS subjects
4	KAS	09:00-12:00	Agreeing on recommendations, time plan and implied work program for BC on GIS and dissemination database Report writing Debriefing: Experts, KAS Project Leader, Component Leader, and RTA

Annex 3. Persons met

KAS:

1. Mr. Burim Limolli, Head of IT - Division, burim.limolli@rks-gov.net KAS
2. Mr. Mentor Shala, Software Developer, mentor.shala@rks-gov.net, KAS
3. Ms. Drita Sylejmani, Senior Dissemination Officer, drita.sylejmani@rks-gov.net, KAS
4. Mr. Bekim Canolli, Head of Methodology Division; bekim.canolli@rks-gov.net, [KAS](#)
5. Ms. Mensure Cerkezi, External Trade Officer, mensure.cerkezi@rks-gov.net, KAS

RTA Team:

Per Knudsen, RTA

Nora Zogaj, RTA Assistant

Annex 4. Creation of PX-File with two digit trade statistics

To create a PX-file with foreign trade data on 2 digit level, the data must be extracted from the Eurotrace software and into Excel. The associated Excel file will look like this.

The file is called EX_IM 2013 by 2 dig. // You know more about Eurotrace than I do so you should develop you own documentation of the extraction-//

TradeType	TotalTradeG:										
Year	2013:										
UnitsXK	tutusu:										
Office	tot office3:										
CustProc	tutucpc:										
TrspMode	modtot2013:										
=====											
Commodity	01: CHAPTER 1 - LIVE	02: CHAPTER 2 - ME	03: CHAPTER 3 - FIS	04: CHAPTER 4 - DAIF	05: CHAPTER 5 - PRC	06: CHAPTER					
PartnerC \	NetWeight	StatValue:	NetWeight	StatValue:	NetWeight	StatValue:	NetWeight	StatValue:	NetWeight	StatValue:	NetWeight St
AD:ANDOI	0	0	0	0	0	0	0	0	0	0	0
AE:UNITEI	0	0	0	0	0	0	0	0	0	0	0
AF:AFGHA	0	0	0	0	0	0	0	0	0	0	0
AG:ANTIG	0	0	0	0	0	0	0	0	0	0	0
AI:ANGUIL	0	0	0	0	0	0	0	0	0	0	0
AL:ALBAN	0	0	1.004	5.706	0	0	203.074	107.024	0	0	0
AM:ARME	0	0	0	0	0	0	0	0	0	0	0
AN:NETHE	0	0	0	0	0	0	0	0	0	0	0
AO:ANGO	0	0	0	0	0	0	0	0	0	0	0
AQ:ANTAF	0	0	0	0	0	0	0	0	0	0	0
AR:ARGEI	0	0	0	0	0	0	0	0	0	0	0
AS:AMER	0	0	0	0	0	0	0	0	0	0	0
AT:AUSTR	0	0	0	0	0	0	0	0	0	0	3.200
AU:AUSTF	0	0	0	0	0	0	0	0	0	0	0
AW:ARUB	0	0	0	0	0	0	0	0	0	0	0
AZ:AZERE	0	0	0	0	0	0	0	0	0	0	0
BA:BOSNI	0	0	0	0	0	0	0	0	0	0	0
BB:BARBA	0	0	0	0	0	0	0	0	0	0	0
BD:BANGI	0	0	0	0	0	0	0	0	0	0	0
BE:BELGI	0	0	0	0	0	0	0	0	0	0	0

The file is in principle “well structured” and suitable for reading by PX-Edit with commodities in the head (columns) and countries in the stub (rows).

The extraction information from Eurotrace at the beginning and end of the file must be removed. PX-Edit will only read a single tab from an Excel file. In this case there are two tabs (IM and EX).

To easily read the file it is therefore recommendable to rearrange the Excel file (use copy paste to a new file). It should look like this:

	A	B	C	D	E	F	G	H	I	J	K
1	Import and Export - Main Chapters 2 Digits										
2	Commodity			01:CHAPTER 1 - LIVE/02:CHAPTER 2 - ME/03:CHAPTER 3 - FIS/04:CHAPTER 4 - DAIL							
3	Unit			NetWeight StatValue: NetWeight StatValue: NetWeight StatValue: NetWeight StatValue:							
4	PartnerC \ Indicators	Trade	Time	0	0	0	0	0	0	0	0
5	AD:ANDORRA	Import	2013	123	3.741	0	0	0	0	0	0
6	AE:UNITED ARAB EMIRATES	Import	2013	0	0	0	0	0	0	0	0
7	AF:AFGHANISTAN	Import	2013	0	0	0	0	0	0	0	0
8	AG:ANTIGUA AND BARBUDA	Import	2013	0	0	0	0	0	0	0	0
9	AI:ANGUILLA	Import	2013	0	0	0	0	46.573	187.684	630.351	504.650
10	AL:ALBANIA	Import	2013	0	0	0	0	0	0	0	0
11	AM:ARMENIA	Import	2013	0	0	0	0	0	0	0	0
12	AN:NETHERLANDS ANTILLES	Import	2013	0	0	0	0	0	0	0	0
13	AO:ANGOLA	Import	2013	0	0	0	0	0	0	0	0
14	AQ:ANTARCTICA	Import	2013	0	0	0	0	261.841	430.287	0	0
15	AR:ARGENTINA	Import	2013	0	0	0	0	0	0	0	0
16	AS:AMERICAN SAMOA	Import	2013	73.895	153.440	40.257	92.907	0	0	266.247	844.439
17	AT:AUSTRIA	Import	2013	0	0	68.852	232.397	0	0	0	0
18	AU:AUSTRALIA	Import	2013	0	0	0	0	0	0	0	0
19	AW:ARUBA	Import	2013	0	0	0	0	0	0	0	0
20	AZ:AZERBAIJAN	Import	2013	0	0	16.235	114.537	1.021	3.605	4.477.774	3.500.703
21	BA:BOSNIA AND HERZEGOVINA	Import	2013	0	0	0	0	0	0	0	0
22	BB:BARBADOS	Import	2013	0	0	0	0	0	0	0	0
23	BD:BANGLADESH	Import	2013	0	0	696.032	457.434	9.847	17.768	2.675	6.918
24	BE:BELGIUM	Import	2013	0	0	0	0	0	0	0	0

The first cell in the first line should contain the title of the table that we are going to create. On the second line in the first cell – we have the name of the variable *Commodity* (This being the 99 chapters that the trade statistics is aggregated to.) In line 3 (A3) we have a variable called *Unit* (Net Weight and StatValue). In cell A4 we have the variable *Country* (This being the countries that trade with Kosovo).

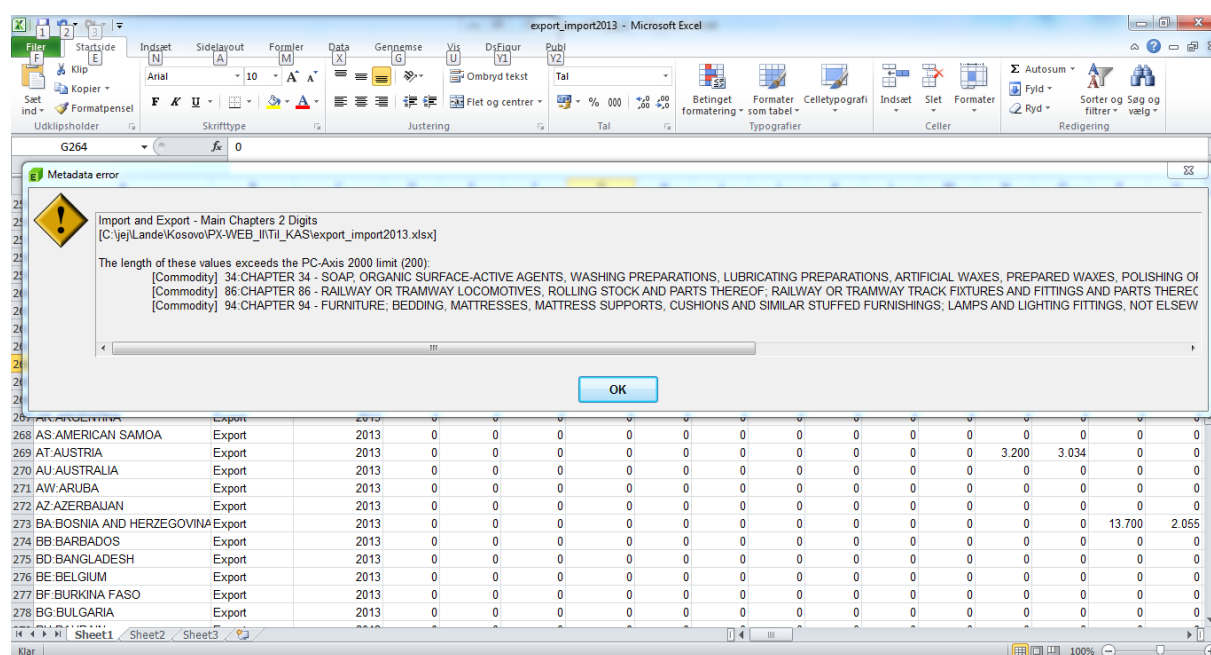
In column B we now add a new variable to be named as *Trade*. The *Trade* variable will allow us to give the users the possibility of choosing both import and export. For each value of the variable *Country* (each row) the value Import is added in column b. As we have foreign trade data for the year 2013 we will use column C to add *Time* as variable (dimension) to our table also. This excel file (export_import_2013) can be read directly by PX-Edit.

To add data for export we can make a copy of all country's and add these as new rows. See the illustration below.

	A	B	C	D	E	F	G
255	ZW:ZIMBABWE	Import	2013	0	0	0	0
256	ZZ:	Import	2013				
257	AD:ANDORRA	Export	2013	0	0	0	0
258	AE:UNITED ARAB EMIRATES	Export	2013	0	0	0	0
259	AF:AFGHANISTAN	Export	2013	0	0	0	0
260	AG:ANTIGUA AND BARBUDA	Export	2013	0	0	0	0
261	AI:ANGUILLA	Export	2013	0	0	0	0
262	AL:ALBANIA	Export	2013	0	0	1.004	5.706
263	AM:ARMENIA	Export	2013	0	0	0	0
264	AN:NETHERLANDS ANTILLES	Export	2013	0	0	0	0
265	AO:ANGOLA	Export	2013	0	0	0	0
266	AQ:ANTARCTICA	Export	2013	0	0	0	0
267	AR:ARGENTINA	Export	2013	0	0	0	0
268	AS:AMERICAN SAMOA	Export	2013	0	0	0	0
269	AT:AUSTRIA	Export	2013	0	0	0	0
270	AU:AUSTRALIA	Export	2013	0	0	0	0
271	AW:ARUBA	Export	2013	0	0	0	0
272	AZ:AZERBAIJAN	Export	2013	0	0	0	0
273	BA:BOSNIA AND HERZEGOVINA	Export	2013	0	0	0	0
274	BB:BARBADOS	Export	2013	0	0	0	0
275	BD:BANGLADESH	Export	2013	0	0	0	0
276	BE:BELGIUM	Export	2013	0	0	0	0
277	BF:BURKINA FASO	Export	2013	0	0	0	0
278	BG:BULGARIA	Export	2013	0	0	0	0

As long as the export data (from Eurotrac) has the same countries and the same chapters (2 digit values) the data can be inserted from the Excel file using copy – paste.

In screen dump below you can see that some of the texts for the different chapters in the trade statistics are longer than the 200 characters allowed by the PX-format. PX-Edit will just truncate the texts and in PX-Edit you can change them to something shorter.



When the Excel file is imported we are ready to add the relevant metadata.

[1] Import and Export - Main Chapters 2 Digits by Country, Trade, Time, Commodity and Unit

			01: CHAPTER 1 - LIVE ANIMALS		02: CHAPTER 2 - MEAT AND EDIBLE MEAT OF...		03: CHAPTER 3 - FISH AND CRUSTACEANS, M...		04: CHAPTER 4 - ...	
			NetWeight:Net weight	StatValue:Statistical value	NetWeight:Net weight	StatValue:Statistical value	NetWeight:Net weight	StatValue:Statistical value	NetWeight:Net weight	StatValue:Statistical value
AD:ANDORRA	Import	2013	123.00	3740.84	0.00	0.00	0.00	0.00	0.00	0.00
	Export	2013	0.00	0.00	0.00	0.00	0.00	0.00	0.00	0.00
AE:UNITED AR...	Import	2013	0.00	0.00	0.00	0.00	0.00	0.00	0.00	0.00
	Export	2013	0.00	0.00	0.00	0.00	0.00	0.00	0.00	0.00
AF:AFGHANIST...	Import	2013	0.00	0.00	0.00	0.00	0.00	0.00	0.00	0.00
	Export	2013	0.00	0.00	0.00	0.00	0.00	0.00	0.00	0.00
AG:ANTIGUA...	Import	2013	0.00	0.00	0.00	0.00	0.00	0.00	0.00	0.00
	Export	2013	0.00	0.00	0.00	0.00	0.00	0.00	0.00	0.00
AI:ANGUILLA	Import	2013	0.00	0.00	0.00	0.00	46573.00	187684.37	630350	0.00
	Export	2013	0.00	0.00	0.00	0.00	0.00	0.00	0.00	0.00
AL:ALBANIA	Import	2013	0.00	0.00	0.00	0.00	0.00	0.00	0.00	0.00
	Export	2013	0.00	0.00	1003.56	5706.33	0.00	0.00	0.00	203072
AM:ARMENIA	Import	2013	0.00	0.00	0.00	0.00	0.00	0.00	0.00	0.00
	Export	2013	0.00	0.00	0.00	0.00	0.00	0.00	0.00	0.00
AN:NETHERLA...	Import	2013	0.00	0.00	0.00	0.00	0.00	0.00	0.00	0.00
	Export	2013	0.00	0.00	0.00	0.00	0.00	0.00	0.00	0.00
AO:ANGOLA	Import	2013	0.00	0.00	0.00	0.00	0.00	0.00	0.00	0.00
	Export	2013	0.00	0.00	0.00	0.00	0.00	0.00	0.00	0.00
AQ:ANTARCTICA	Import	2013	0.00	0.00	0.00	0.00	261841.01	430286.61	0.00	0.00
	Export	2013	0.00	0.00	0.00	0.00	0.00	0.00	0.00	0.00
AR:ARGENTINA	Import	2013	0.00	0.00	0.00	0.00	0.00	0.00	0.00	0.00
	Export	2013	0.00	0.00	0.00	0.00	0.00	0.00	0.00	0.00
AS:AMERICAN ...	Import	2013	73895.00	153440.00	40256.77	92906.69	0.00	0.00	0.00	266246
	Export	2013	0.00	0.00	0.00	0.00	0.00	0.00	0.00	0.00

504 rows x 196 columns = 98 784 figures

The edit window is ready.

[1] Import and Export - Main Chapters 2 Digits by Country, Trade, Time, Commodity and Unit

Variable: Country

Keywords Meta part View Select Sort Edit Add Anonymize

Table	keyword	
Variables	CHARSET	ANSI
	AXIS-VERSION	2013
	LANGUAGE	en
	LANGUAGES	en,sq,sr
	CREATION-DATE	20140918 09:00
	NEXT-UPDATE	20140918 09:00
	PX-SERVER	
	DIRECTORY-PATH	
	UPDATE-FREQUENCY	
	TABLEID	
Values	SYNONYMS	
	DECIMALS	2
	SHOWDECIMALS	
	ROUNDING	
	MATRIX	IMPEX_Y_01
	AGGREGALLOWED	
	SUBJECT-CODE	KAU
	SUBJECT-AREA	Trade
	COPYRIGHT	YES
	DESCRIPTION	Import and Exports - Yearly
Cellnotes	TITLE	Import and Export - Main Chapters 2 Digits by Country, Trade, Time, Commodity and Unit
	DESCRIPTIONDEFAULT	


As stressed in the report and said during the 2 activities – it is extremely important that the meta-data about the table is taken from a controlled and agreed list so everything is named, written and spelled the same way.

UNITS	Kg and Euro
-------	-------------

In this case it is especially important to get UNITS correct. If the data is in Tons and million Euros data will be orders of magnitude in error if UNIT is written as Kg and Euro.

How the file (export_import_2013.px) is placed on the Web server see report from previous activity and the general documentation of PX-Web as available from www.scb.se/pc-axis. When the file is placed on the webserver it should look like this.

English ▼



AGJENCIA E STATISTIKAVE TË KOSOVËS
AGENCIJA ZA STATISTIKU KOSOVA
KOSOVO AGENCY OF STATISTICS

» KAS Demonstration Database 2014 » Trade_2 » Import and Exports - Yearly

1
Choose table

2
Choose variable

3
Show table

Import and Exports - Yearly

Select variable
About table

Mark your selections and choose between table on screen and file format. Markeringstips
For variables marked * you need to select at least one value

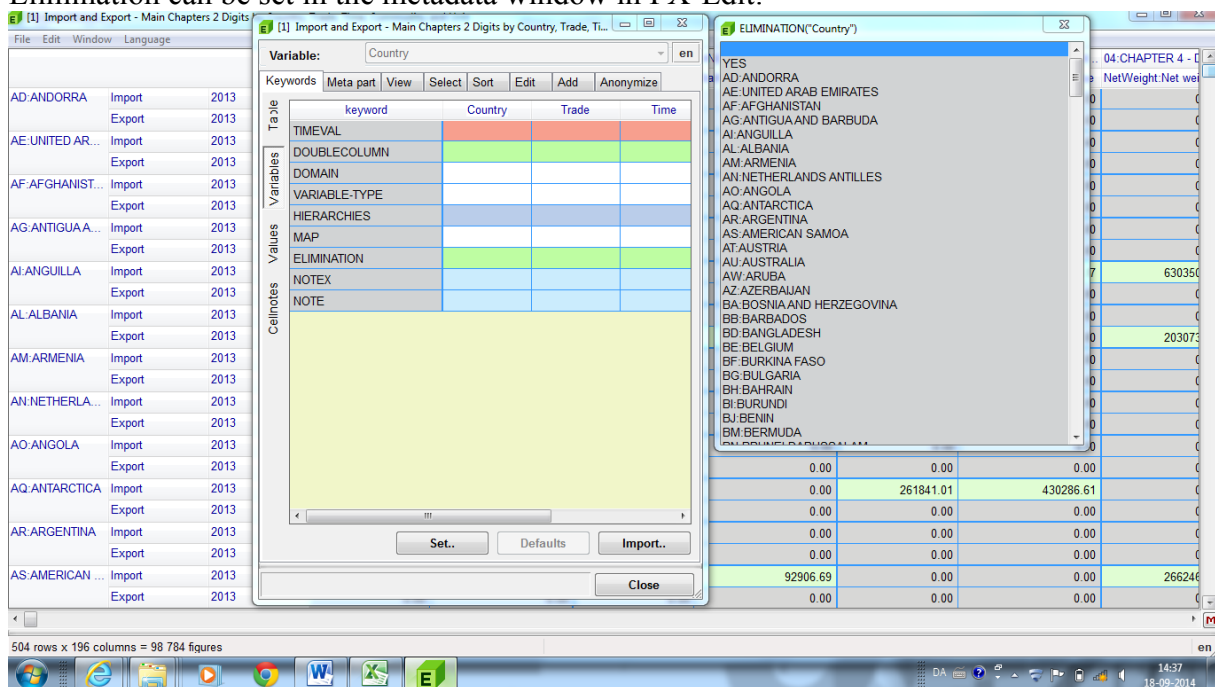
Country *	Trade *	Time *
<div style="display: flex; align-items: center;"> <input checked="" type="checkbox"/> <input type="checkbox"/> <input type="checkbox"/> <input type="checkbox"/> </div> <div style="display: flex; align-items: center;"> I alt 252 Vælg 0 </div> <div style="border: 1px solid #ccc; padding: 2px; font-size: x-small;"> AD:ANDORRA AE:UNITED ARAB EMIRATES AF:AFGHANISTAN AG:ANTIGUA AND BARBUDA AI:ANGUILLA AL:ALBANIA </div> <div style="display: flex; align-items: center;"> <input style="width: 50px; font-size: x-small;" type="text"/> <input style="width: 15px; height: 15px; border: 1px solid #ccc; margin-left: 5px;" type="button"/> </div>	<div style="display: flex; align-items: center;"> <input checked="" type="checkbox"/> <input type="checkbox"/> <input type="checkbox"/> <input type="checkbox"/> </div> <div style="display: flex; align-items: center;"> I alt 2 Vælg 0 </div> <div style="border: 1px solid #ccc; padding: 2px; font-size: x-small;"> Import Export </div> <div style="display: flex; align-items: center;"> <input style="width: 50px; font-size: x-small;" type="text"/> <input style="width: 15px; height: 15px; border: 1px solid #ccc; margin-left: 5px;" type="button"/> </div>	<div style="display: flex; align-items: center;"> <input checked="" type="checkbox"/> <input type="checkbox"/> <input type="checkbox"/> <input type="checkbox"/> </div> <div style="display: flex; align-items: center;"> I alt 1 Vælg 0 </div> <div style="border: 1px solid #ccc; padding: 2px; font-size: x-small;"> 2013 </div> <div style="display: flex; align-items: center;"> <input style="width: 50px; font-size: x-small;" type="text"/> <input style="width: 15px; height: 15px; border: 1px solid #ccc; margin-left: 5px;" type="button"/> </div>

In this table / example (see below) it can be useful to use elimination. The variable *Commodity* can be eliminated to the sum of all commodities thereby giving the user the total import / export for Kosovo. Also variable *Country* can be eliminated to the total of all countries.

Country * <input checked="" type="checkbox"/> <input type="checkbox"/> <input type="checkbox"/> <input type="checkbox"/> <input type="checkbox"/>	Trade * <input checked="" type="checkbox"/> <input type="checkbox"/> <input type="checkbox"/> <input type="checkbox"/> <input type="checkbox"/>	Time * <input checked="" type="checkbox"/> <input type="checkbox"/> <input type="checkbox"/> <input type="checkbox"/> <input type="checkbox"/>
I alt 252 Vælg 0	I alt 2 Vælg 0	I alt 1 Vælg 0
AD:ANDORRA AE:UNITED ARAB EMIRATES AF:AFGHANISTAN AG:ANTIGUA AND BARBUDA AI:ANGUILLA AL:ALBANIA	Import Export	2013
Søg <input type="text"/> <input type="button" value="→"/> <input type="checkbox"/> Beginning of row	Søg <input type="text"/> <input type="button" value="→"/> <input type="checkbox"/> Beginning of row	Søg <input type="text"/> <input type="button" value="→"/> <input type="checkbox"/> Beginning of row

Commodity * <input checked="" type="checkbox"/> <input type="checkbox"/> <input type="checkbox"/> <input type="checkbox"/> <input type="checkbox"/>
I alt 98 Vælg 0
01:CHAPTER 1 - LIVE ANIMALS 02:CHAPTER 2 - MEAT AND EDIBLE MEAT OFFAL 03:CHAPTER 3 - FISH AND CRUSTACEANS, MOLLUSCS AND OTHER AQUATIC INVERTEBRATES 04:CHAPTER 4 - DAIRY PRODUCE; BIRDS' EGGS; NATURAL HONEY; EDIBLE PRODUCTS OF ANIMAL ORIGIN, NOT ELSEWHERE SPECIFIED 05:CHAPTER 5 - PRODUCTS OF ANIMAL ORIGIN, NOT ELSEWHERE SPECIFIED OR INCLUDED 06:CHAPTER 6 - LIVE TREES AND OTHER PLANTS; BULBS, ROOTS AND THE LIKE; CUT FLOWERS AND ORNAMENTAL FOLIAGE
Søg <input type="text"/> <input type="button" value="→"/> <input type="checkbox"/> Beginning of row

Elimination can be set in the metadata window in PX-Edit:



Choose variables and then select YES.

The screenshot shows the PX-Edit software interface. At the top, there is a title bar with the text "[1] Import and Export - Main Chapters 2 Digits by Country, Trade, Ti...". Below the title bar, there is a "Variable:" dropdown menu set to "Country" and a language button labeled "en". Below this, there is a row of buttons: "Keywords", "Meta part", "View", "Select", "Sort", "Edit", "Add", and "Anonymize". The main area of the interface is a table with the following structure:

	keyword	Country	Trade	Time
Table	TIMEVAL			
	DOUBLECOLUMN			
	DOMAIN			
	VARIABLE-TYPE			
Variables	HIERARCHIES			
	MAP			
	ELIMINATION	YES		
Values	NOTEX			
	NOTE			
Cellnotes				

The variable imported as Unit –

The screenshot shows the "Unit" dialog box in the PX-Edit software. It has a title bar with the text "Unit *". Below the title bar, there are four buttons: a checkmark, a minus sign, an up arrow, and a down arrow. Below these buttons, there is a text field containing the text "I alt 2 Vælg 0". At the bottom of the dialog box, there is a list of variables: "NetWeight: Net weight" and "StatValue: Statistical value".

When preparing the PX-file. We took the values directly from Eurotrace giwing us Net weight and Statistical value. Both are meaningless unless you and the user knows if its Kg, Tons, Euros or millions of Euros. You can changes this either in Excel when you prepare the file but perhaps easier in PX-Edit. In the screen shown below ALWAYS remember to click on OK when you have made changes. Otherwise the changes will disappear.

Variable: Unit en

Keywords Meta part View Select Sort Edit Add Anonymize

Variable: Unit OK

text [2]	code [0]
Wheight - Kg	
Value - Euros	

1 / 2

Select..

☒ all
☐ selected
☐ repeated
☐ Allow duplicates

OK
Reset
Close

Adding a new year:

Data for 2012 can be added to the file in 2 different ways. Either by adding import / export data and the year 2012 to the Excel and importing 2012 and 2013 in to PX-Edit as a single file. Copy the rows with county / import and export and the add 2012 so the excel file looks like below. As long as the units, chapters and countries are the same this will work when you copy paste the actual figures from excel.

	A	B	C	D	E	F	G	H	I
498	XS:SERBIA 06/2005	Export	2013	0	0	0	0	0	0
499	XX:	Export	2013	0	0	0	0	0	0
500	XY:	Export	2013	0	0	0	0	0	0
501	XZ:	Export	2013	0	0	0	0	0	0
502	YE:YEMEN	Export	2013	0	0	0	0	0	0
503	YT:MAYOTTE	Export	2013	0	0	0	0	0	0
504	YU:	Export	2013	0	0	0	0	0	0
505	ZA:SOUTH AFRICA	Export	2013	0	0	0	0	0	0
506	ZM:ZAMBIA	Export	2013	0	0	0	0	0	0
507	ZW:ZIMBABWE	Export	2013	0	0	0	0	0	0
508	ZZ:	Export	2013	0	0	0	0	0	0
509	AD:ANDORRA	Import	2012						
510	AE:UNITED ARAB EMIRATES	Import	2012						
511	AF:AFGHANISTAN	Import	2012						
512	AG:ANTIGUA AND BARBUDA	Import	2012						
513	AI:ANGUILLA	Import	2012						
514	AL:ALBANIA	Import	2012						
515	AM:ARMENIA	Import	2012						
516	AN:NETHERLANDS ANTILLES	Import	2012						
517	AO:ANGOLA	Import	2012						
518	AQ:ANTARCTICA	Import	2012						
519	AR:ARGENTINA	Import	2012						
520	AS:AMERICAN SAMOA	Import	2012						
521	AT:AUSTRIA	Import	2012						

The file above is saved as export_import_2013_2012.

When imported to PX-Wed it looks like the illustration below:

[1] Import and Export - Main Chapters 2 Digits by Country, Trade, Time, Commodity and Unit								
File Edit Window Language								
			01: CHAPTER 1 - LIVE ANIMALS		02: CHAPTER 2 - MEAT AND EDIBLE MEAT OF ...		03: CHAPTER 3 - FISH AND CRUSTACEANS, M...	
			NetWeight:Net weight	StatValue:Statistical value	NetWeight:Net weight	StatValue:Statistical value	NetWeight:Net weight	StatValue:Statistical value
AD:ANDORRA	Import	2013	123.00	3740.84	0.00	0.00	0.00	0.00
		2012	0.00	0.00	0.00	0.00	0.00	0.00
	Export	2013	0.00	0.00	0.00	0.00	0.00	0.00
		2012	0.00	0.00	0.00	0.00	0.00	0.00
AE:UNITED AR...	Import	2013	0.00	0.00	0.00	0.00	0.00	0.00
		2012	0.00	0.00	0.00	0.00	0.00	0.00
	Export	2013	0.00	0.00	0.00	0.00	0.00	0.00
		2012	0.00	0.00	0.00	0.00	0.00	0.00
AF:AFGHANIST...	Import	2013	0.00	0.00	0.00	0.00	0.00	0.00
		2012	0.00	0.00	0.00	0.00	0.00	0.00
	Export	2013	0.00	0.00	0.00	0.00	0.00	0.00
		2012	0.00	0.00	0.00	0.00	0.00	0.00
AG:ANTIGUA...	Import	2013	0.00	0.00	0.00	0.00	0.00	0.00
		2012	0.00	0.00	0.00	0.00	0.00	0.00
	Export	2013	0.00	0.00	0.00	0.00	0.00	0.00
		2012	0.00	0.00	0.00	0.00	0.00	0.00
AI:ANGUILLA	Import	2013	0.00	0.00	0.00	0.00	46573.00	187684.37
		2012	0.00	0.00	0.00	0.00	0.00	0.00
	Export	2013	0.00	0.00	0.00	0.00	0.00	0.00
		2012	0.00	0.00	0.00	0.00	0.00	0.00

You can reuse the metadata from the first file by importing them:

keywords			C:\jevlance\Kosovo\KAS-VV\B_01111_KAS\export_import_2013.px		[1] Import and Export - Main Chapters 2 Digits by Country, Trade, Time, C...	
<input type="checkbox"/>	VALUES("Time")		2013		2013, 2012	
<input checked="" type="checkbox"/>	AXIS-VERSION		2013			
<input checked="" type="checkbox"/>	LANGUAGE		en			
<input checked="" type="checkbox"/>	CREATION-DATE		20140918 09:00			
<input checked="" type="checkbox"/>	NEXT-UPDATE		20140918 09:00			
<input checked="" type="checkbox"/>	MATRIX		IMPEX_Y_01			
<input checked="" type="checkbox"/>	SUBJECT-CODE		KAU			
<input checked="" type="checkbox"/>	SUBJECT-AREA		Trade			
<input checked="" type="checkbox"/>	COPYRIGHT		YES			
<input type="checkbox"/>	DESCRIPTION		Import and Exports - Yearly			
<input checked="" type="checkbox"/>	UNITS		Kg and Euro			
<input checked="" type="checkbox"/>	LAST-UPDATED		20140918 09:00			
<input checked="" type="checkbox"/>	CONTACT		KAS - Kosovo Agency for Statistics			
<input checked="" type="checkbox"/>	SOURCE		Eurotrace			

However the additional year can also be added directly in PX-edit. –
Use Edit Metadata - > Values -> Add – Empty>

Variable: Time en

Keywords Meta part View Select Sort Edit Add Anonymize

New value

Code: **Add empty**

☐ Dots equal zero **Aggregate**

☐ Remove the aggregated v **Fill item: ..** **Calculator..**

2013 0 / 1

☐ Codes **Select..**

Remove **Fill**

New variable

Add

Value: Code:

Close

We now have a PX-file that looks like this:

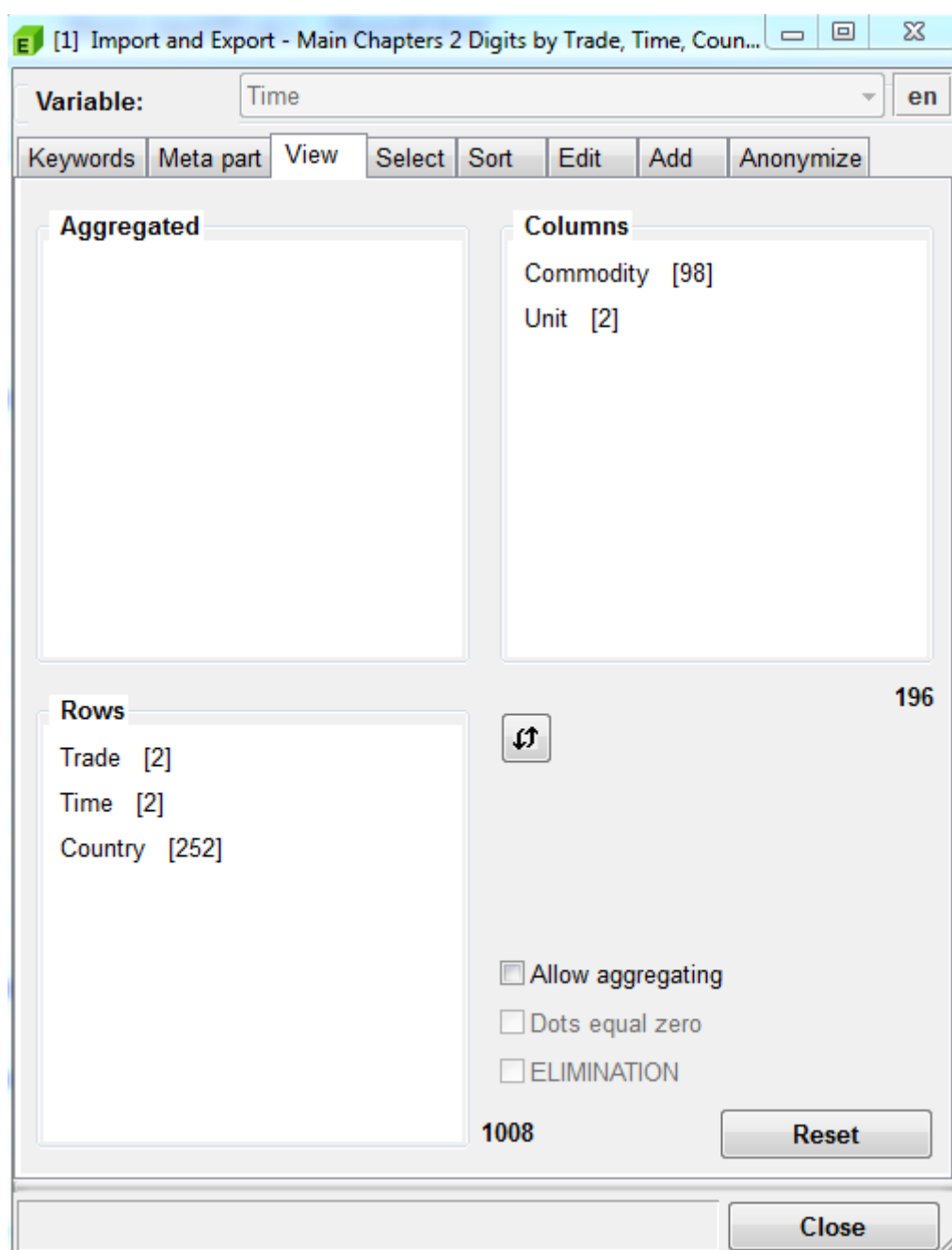
			01: CHAPTER 1 - LIVE ANIMALS		02: CHAPTER 2 - MEAT AND EDIBLE MEAT OF		03: CHAPTER 3 - FISH AND CR	
			NetWeight:Net weight	StatValue:Statistical value	NetWeight:Net weight	StatValue:Statistical value	NetWeight:Net weight	StatVal
AL: ALBANIA	Export	2012						
AM: ARMENIA	Import	2013	0.00	0.00	0.00	0.00	0.00	
		2012						
	Export	2013	0.00	0.00	0.00	0.00	0.00	
		2012						
AN: NETHERLANDS ANTILLES	Import	2013	0.00	0.00	0.00	0.00	0.00	
		2012						
	Export	2013	0.00	0.00	0.00	0.00	0.00	
		2012						
AO: ANGOLA	Import	2013	0.00	0.00	0.00	0.00	0.00	
		2012						
	Export	2013	0.00	0.00	0.00	0.00	0.00	
		2012						
AQ: ANTARCTICA	Import	2013	0.00	0.00	0.00	0.00	261841.01	
		2012						
	Export	2013	0.00	0.00	0.00	0.00	0.00	
		2012						
AR: ARGENTINA	Import	2013	0.00	0.00	0.00	0.00	0.00	
		2012						
	Export	2013	0.00	0.00	0.00	0.00	0.00	
		2012						

In this structure is nearly impossible to copy-paste the data for 2012. This is an argument for adding the data in Excel and then reusing the metadata from the old file. Especially if you have translated the variable / values into the 3 languages used in Kosovo.

However the structure of the PX-file (head and stub) can be changed so it is easier to copy paste the new data into PX-Edit.

Edit metadata- > Variables -> View ->

In this window you can move the variables around freely



If you arrange the variables like in the illustration above it is possible to copy paste from the Excel file into PX-Edit

[1] Import and Export - Main Chapters 2 Digits by Trade, Time, Country, Commodity and Unit												
			01:CHAPTER 1 - LIVE ANIMALS				02:CHAPTER 2 - MEAT AND EDIBLE MEAT OF...				03:CHAPTER 3 - FISH	
			NetWeight	Net weight	StatValue	Statistical value	NetWeight	Net weight	StatValue	Statistical value	NetWeight	Net weight
Export	2013	XC:XC: CEUTA		0.00		0.00		0.00		0.00		0.00
		XK:Kosovo 06/2005		0.00		0.00		0.00		0.00		0.00
		XL:XL: MELITA		0.00		0.00		0.00		0.00		0.00
		XM:Montenegro 06/2005		0.00		0.00		0.00		0.00		0.00
		XS:SERBIA 06/2005		0.00		0.00		0.00		0.00		0.00
		XX:		0.00		0.00		0.00		0.00		0.00
		XY:		0.00		0.00		0.00		0.00		0.00
		XZ:		0.00		0.00		0.00		0.00		0.00
		YE:YEMEN		0.00		0.00		0.00		0.00		0.00
		YT:MAYOTTE		0.00		0.00		0.00		0.00		0.00
		YU:		0.00		0.00		0.00		0.00		0.00
		ZA:SOUTH AFRICA		0.00		0.00		0.00		0.00		0.00
		ZM:ZAMBIA		0.00		0.00		0.00		0.00		0.00
		ZW:ZIMBABWE		0.00		0.00		0.00		0.00		0.00
		ZZ:		0.00		0.00		0.00		0.00		0.00
	2012	AD:ANDORRA			
		AE:UNITED ARAB EMIRATES	
		AF:AFGHANISTAN	
		AG:ANTIGUA AND BARBUDA	
		AI:ANGUILLA	
		AL:ALBANIA	
		AM:ARMENIA	

Placing the mouse / marker in the first empty cell Export – 2012 - net weight – Andorra will make this cell an anchor for a multiple cell copy from the Excel file.

[1] Import and Export - Main Chapters 2 Digits by Trade, Time, Country, Commodity and Unit

FileEditWindowLanguage

		01:CHAPTER 1 - LIVE ANIMALS		02:CHAPTER 2 - MEAT AND EDIBLE MEAT OF...		03:CHAPTER 3 - FISH	
		NetWeight:Net weight	StatValue:Statistical value	NetWeight:Net weight	StatValue:Statistical value	NetWeight:Net weight	
Export	2013	XC:XC: CEUTA	0.00	0.00	0.00	0.00	0.00
		XK:Kosovo 06/2005	0.00	0.00	0.00	0.00	0.00
		XL:XL: MELITA	0.00	0.00	0.00	0.00	0.00
		XM:Montenegro 06/2005	0.00	0.00	0.00	0.00	0.00
		XS:SERBIA 06/2005	0.00	0.00	0.00	0.00	0.00
		XX:	0.00	0.00	0.00	0.00	0.00
		XY:	0.00	0.00	0.00	0.00	0.00
		XZ:	0.00	0.00	0.00	0.00	0.00
		YE:YEMEN	0.00	0.00	0.00	0.00	0.00
		YT:MAYOTTE	0.00	0.00	0.00	0.00	0.00
		YU:	0.00	0.00	0.00	0.00	0.00
		ZA:SOUTH AFRICA	0.00	0.00	0.00	0.00	0.00
		ZM:ZAMBIA	0.00	0.00	0.00	0.00	0.00
		ZW:ZIMBABWE	0.00	0.00	0.00	0.00	0.00
		ZZ:	0.00	0.00	0.00	0.00	0.00
	2012	AD:ANDORRA	0.00	0.00	0.00	0.00	0.00
		AE:UNITED ARAB EMIRATES	0.00	0.00	0.00	0.00	0.00
		AF:AFGHANISTAN	0.00	0.00	0.00	0.00	0.00
		AG:ANTIGUAAND BARBUDA	0.00	0.00	0.00	0.00	0.00
		AI:ANGUILLA	0.00	0.00	0.00	0.00	0.00
		AL:ALBANIA	57236.00	6520135.00	1773.00	45942.00	0.00
		AM:ARMENIA	0.00	0.00	0.00	0.00	0.00

Repeat the process for the import data and save the file.

The file is saved as export_import_2013_2012.px