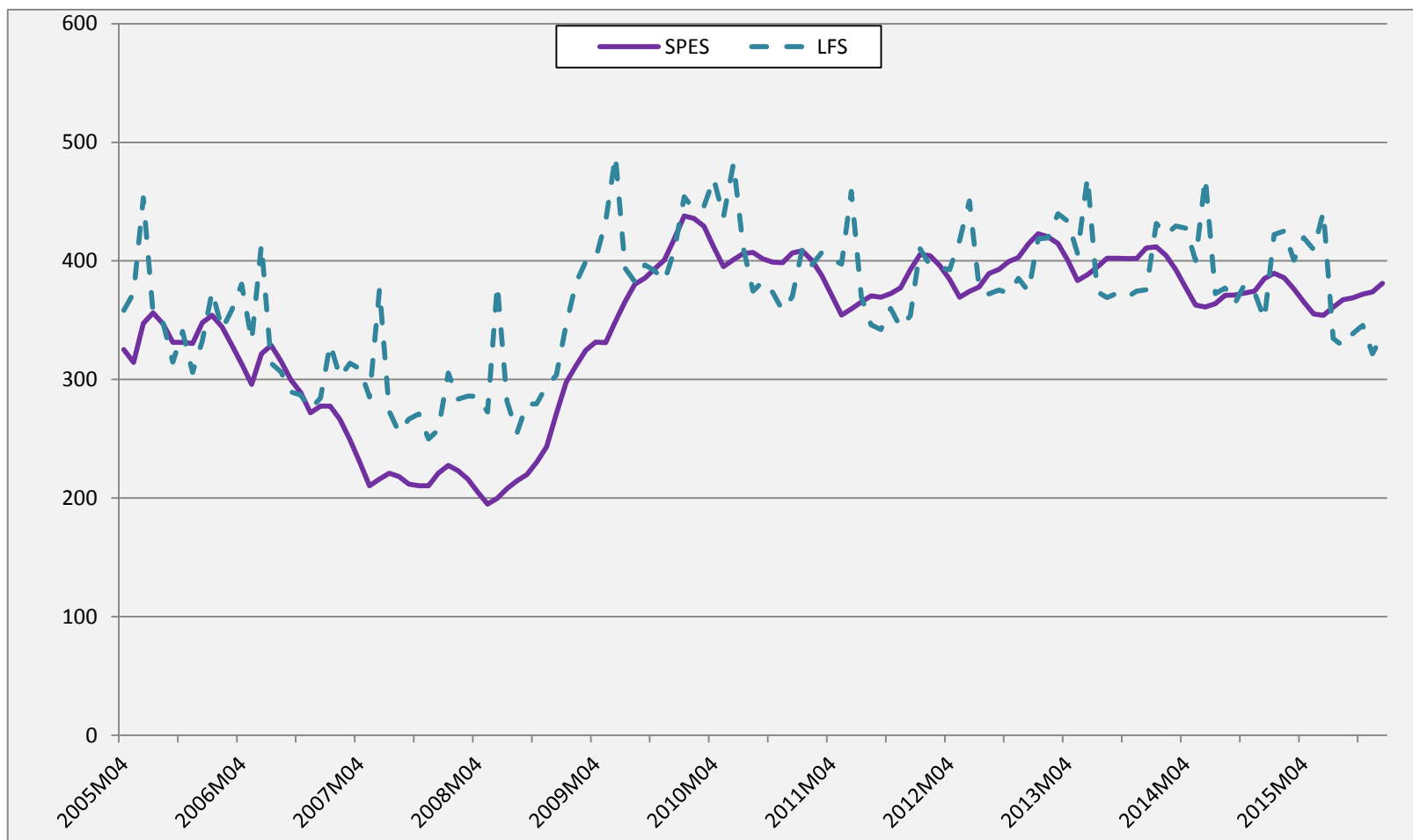


Unemployment statistics from the Labour Force Surveys (LFS) and the Swedish Public Employment Service 2015 – A comparative study

Krister Näsén, Statistics Sweden

Unemployed in the LFS and registered unemployed SPES aged 16-64 years, 2005-2015. Thousands.



Purpose of the study

- Show similarities and differences between the LFS's and SPES's unemployment statistics
- Show which groups were classified as unemployed in the LFS but was not registered as unemployed at the SPES
- Show which groups were registered as unemployed at the SPES but not classified as unemployed in the LFS

LFS - Definitions

A person is employed given that he/she:

- Did at least 1 hour work during the reference week
- **or** was absent from work.

LFS– Definitions (cont.)

A person is unemployed in the LFS given that he/she:

- Did not have a job
- **Was** available for work
- Had been **looking** for work

or

- Waited to start a job within 3 months

SPES - Definitions

The unemployed at the SPES is made up of two parts

- “Openly” unemployed (those receiving unemployment benefit)
- Registered in programmes with development allowance or activity grant

“Openly” unemployed (SPES)

- Are “without work”
- Looking actively for work
- Are able to take a job
- Are not participating in a labour market trainee program
 - BUT may work 7 hours per week as a monthly average

SPES – Definitions (cont.)

Registered in programmes with development allowance or activity grant (SPES)

- Are "without work"
- Looking actively for work
- No explicit demand on what constitutes as "actively" in the different programmes
- The amount of work that is allowed differ between the programmes

Method

- The study was based on interlinking data of the respondents in the LFS with the SPES register for the period January-December 2015
- The LFS weights have been used and have proven to be numerically quite consistent with the SPES register







Method (cont)

	Registered by categories (grouped)							
	Registered unem- ployed	thereof Openly unem- ployed	In progra- mme with activity grant	Jobseeker employed without support	Jobseeker employed with support	Nystarts- jobb categories	Other categories	Total
SPES register	371,2	194,7	176,5	99,7	91,6	45,9	57,9	666,4
LFS	366,7	191,1	175,6	99,5	82,0	50,1	52,4	650,8
(error)	(6,0)	(1,2)	(5,9)	(4,6)	(3,6)	(3,7)	(3,5)	(9,2)
Difference	-4,5	-3,6	-0,9	-0,2	-9,6	4,2	-5,6	-15,6
Difference, %	-1,2%	-1,9%	-0,5%	-0,2%	-10,5%	9,3%	-9,6%	-2,3%

Results

Labour status	Registered by categories (grouped)								Total
	Registered unemployed	thereof		Jobseeker employed without support	Jobseeker employed with support	Nystarts-jobb categories	Other categories	Un-registered at SPES	
		Openly unemployed	In programme with activity grant						
Employed at work	61,4 16,8%	31,5 16,5%	30,0 17,1%	77,3	68,0	43,7	5,5	3 652,1	3 908,0
Employed absent	11,2 3,0%	6,7 3,5%	4,5 2,5%	8,9	11,3	4,2	3,4	703,9	742,7
Unemployed	223,7	118,2	105,5	9,1	1,4	1,6	7,4	133,6	
Percent row	(59,4%) 61,0%	(31,4%) 61,8%	(28,0%) 60,1%	(2,4%)	(0,4%)	(0,4%)	(2,0%)	(35,5%)	(100,0%)
Inactive	70,5 19,2%	34,7 18,2%	35,7 20,3%	4,3	1,4	0,6	36,0	924,3	1 037,1
Total		191,1 100,0%	175,6 100,0%	99,5	82,0	50,1	52,4	5 413,8	6 064,6

Net-differences

Sex/age/ education/ native-/foreign born	Data source		Net-difference
	LFS	SPES	
16-64 years	376 700	366 700	10 000
Men	201 700	197 400	4 300
Women	175 000	169 300	5 700
16-24 years	127 000	67 000	
25-54	201 800	239 200	
55-64	48 000	60 600	-12 600
<u>Education</u>			
Primary and secondary	113 300	89 500	
Upper secondary	153 200	172 700	
Post-secondary	108 500	102 700	5 800
Native born	218 900	186 400	
Foreign born	157 800	180 300	

Gross differences

Labour status	Registered by categories (grouped)								Total
	Registered unemployed	thereof		Jobseeker employed without support	Jobseeker employed with support	Nystarts-jobb categories	Other categories	Un-registered at SPES	
		Openly unemployed	In programme with activity grant						
Employed at work		31,5 16,5%	30,0 17,1%	77,3	68,0	43,7	5,5	3 652,1	3 908,0
Employed absent		6,7 3,5%	4,5 2,5%	8,9	11,3	4,2	3,4	703,9	742,7
Unemployed	223,7	118,2	105,5						376,7
Percent row	(59,4%) 61,0%	(31,4%) 61,8%	(28,0%) 60,1%						(100,0%)
Inactive		34,7 18,2%	35,7 20,3%	4,3	1,4	0,6	36,0	924,3	1 037,1
Total	366,7 100,0%	191,1 100,0%	175,6 100,0%	99,5	82,0	50,1	52,4	5 413,8	6 064,6

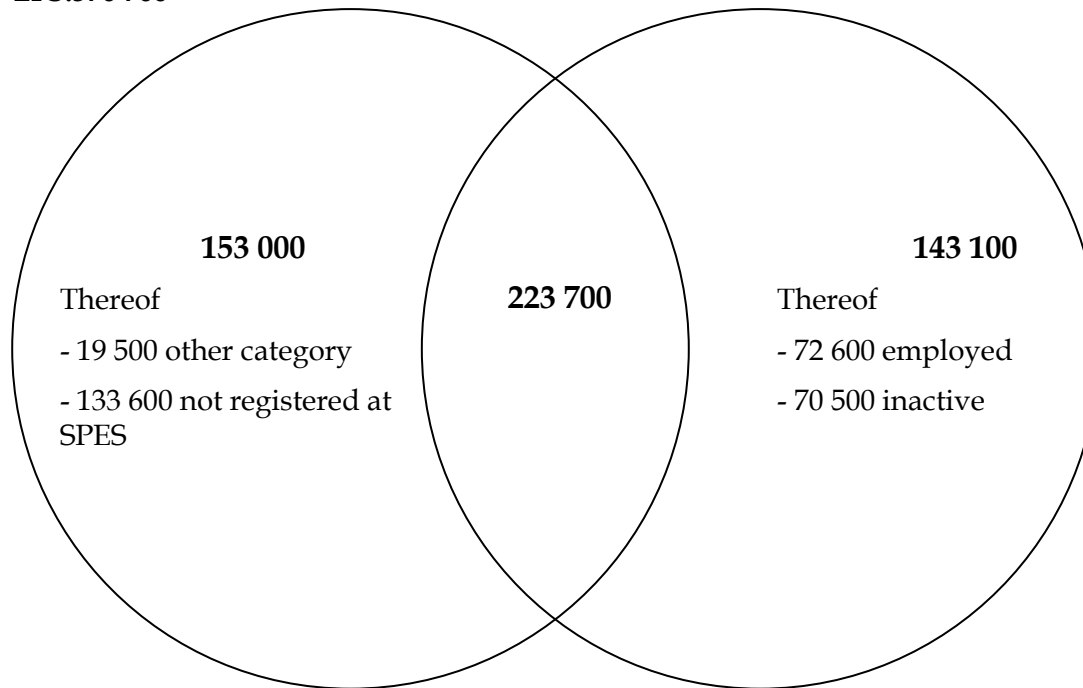
Differences

- Numerically the consistency is good with small net differences (for the total)
- There are however big gross differences
- Unemployed in the LFS are not necessarily registered at the SPES
- Registered unemployed at the SPES can be both employed and inactive in the LFS

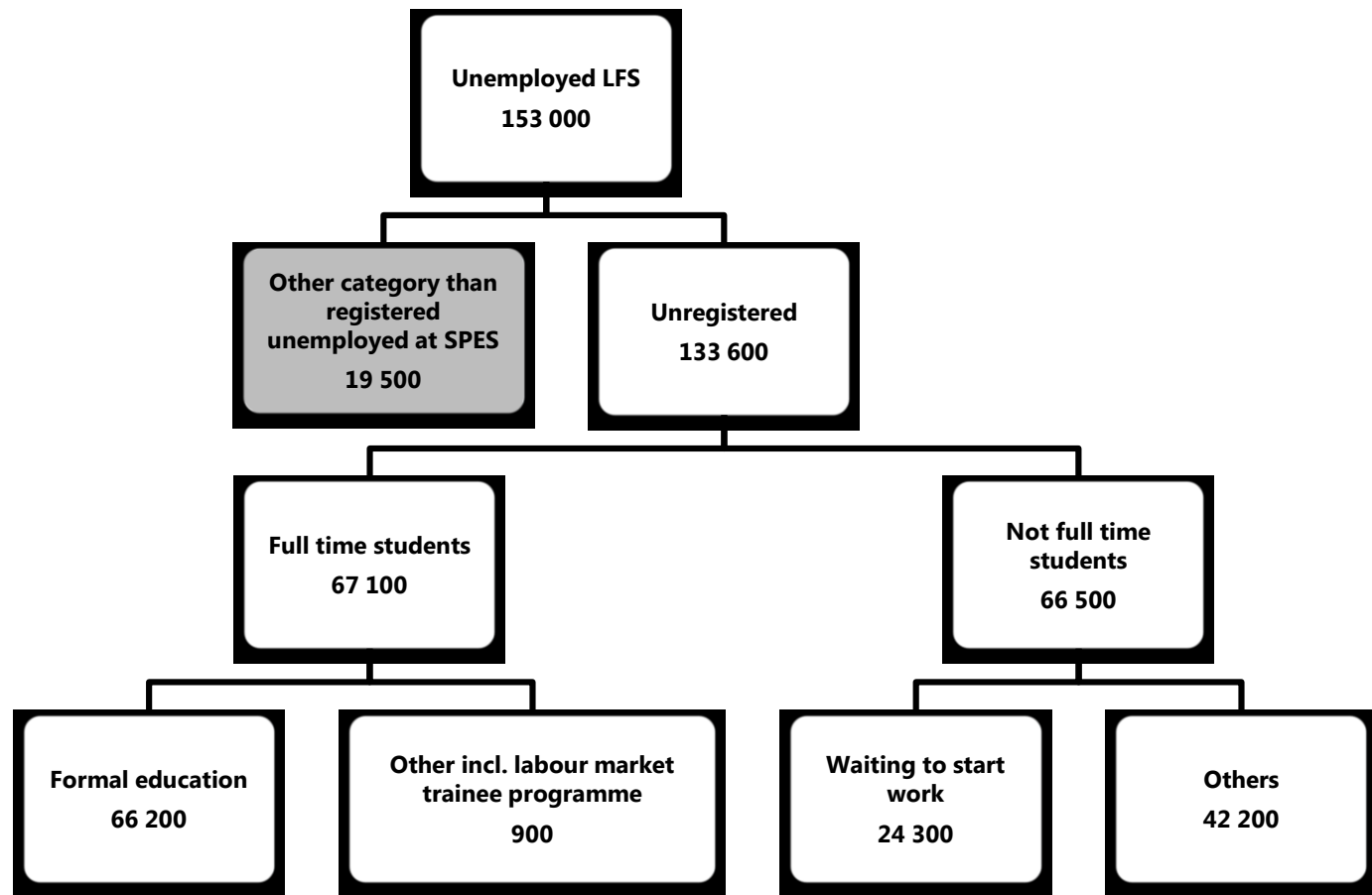
Unemployed in the LFS and registered unemployed at the SPES

**Unemployed
LFS: 376 700**

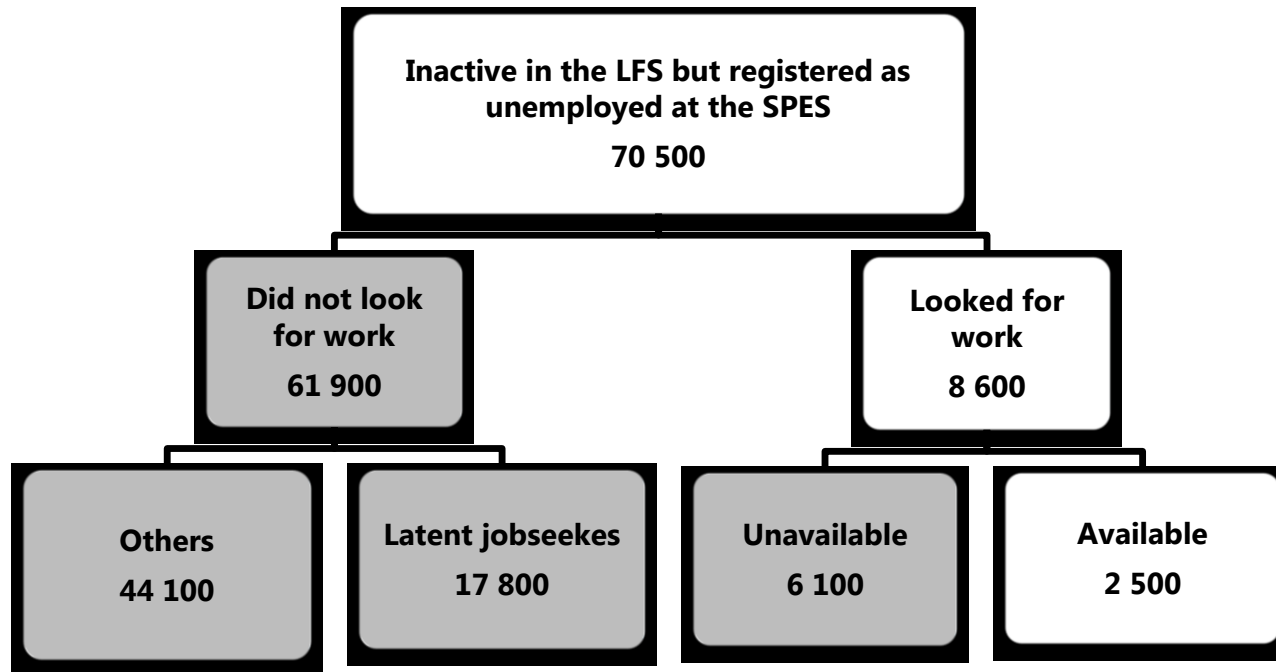
**Registered unemployed SPES:
366 700**



Unemployed in the LFS but not registered as unemployed at the SPES



Inactive in the LFS but registered as unemployed at the SPES



Employed in the LFS but registered as unemployed at the SPES

- Different definitions of what constitutes as “employed”
- 7 percent worked usually shorter than 8 hours a week
- The majority could not be explained by the differing definitions

Summary

- The LFS and the SPES statistics on unemployed differ
- Small net differences
- Big gross differences
 - Even though they seem numerically consistent they include very different groups
- Thank you for listening!