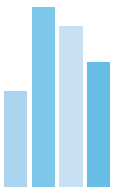


Dissemination Database and its use

ICBS 2014

Lars Knudsen
Statistics Denmark



Presentation plan

Experiences with PX-Products in Statistics Denmark

- History with PC-Axis
- SQL-datamodel or PX-files
- About our setup
- Special features
- Future setup ...



Presentation plan (continued)

Development of PX-Products by Statistics Denmark

- Before .Net
- .Net developments
- Question and answers
- Comming days ...



Experiences with PX-Products

Some history

- Online access to **mainframe** databank (AXIS) in 1986
- Produced **cd-roms** with px-files during 1990's and beginning of 2000's
- Created **PX-Make**
- And introduced **PX-Publ** and **PC-Axis SQL**
- Lunched free online web access to **StatBank interface** in 2001



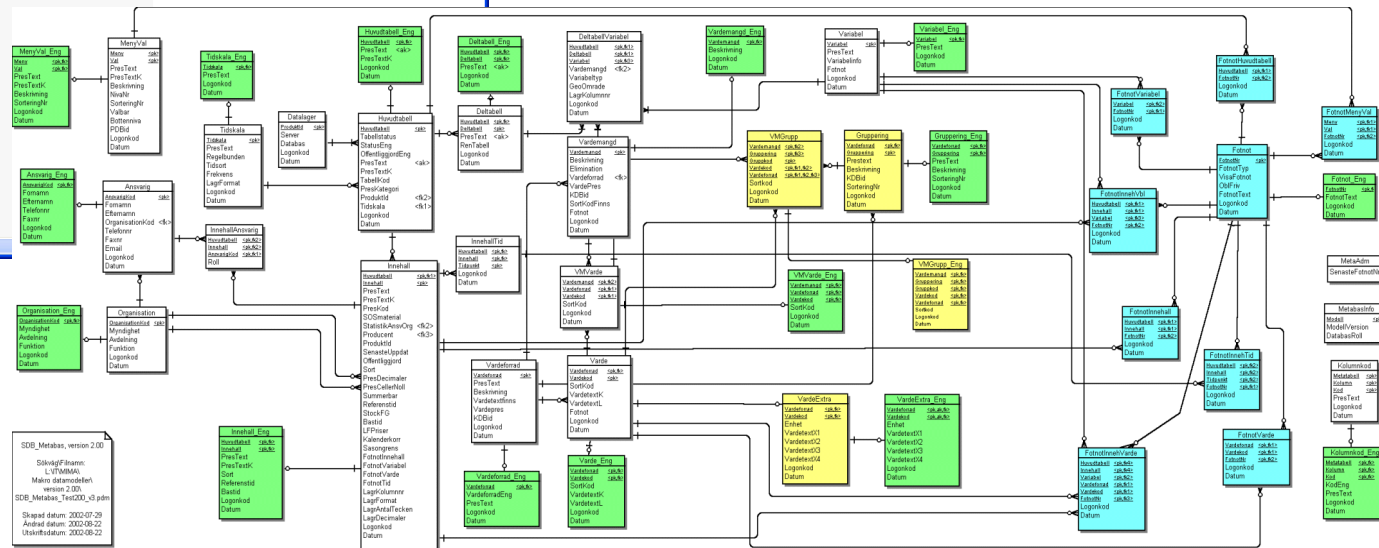
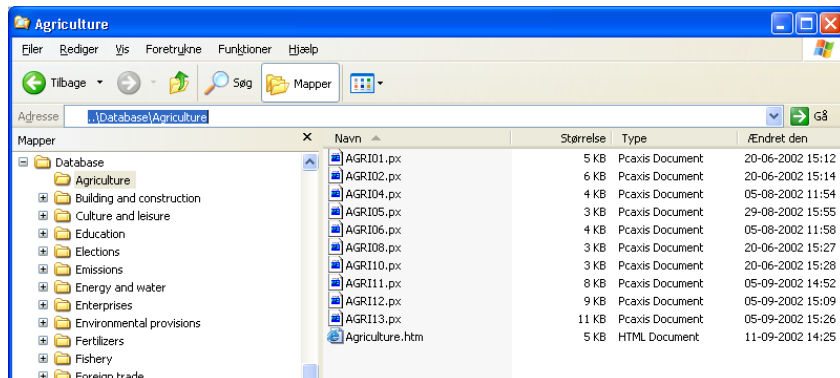
Experiences with PX-Products

Some history

- Opened for **saved queries** via web interface (in XML) around 2003
- Introduced **DataShooting** (e-mail service)
- Using **PX-Web** for external sites in 2004
- Created **PX-iGraph** for web interface
- Opened **StatHost** service for statistical producers
- Started **.Net** developments around 2008
- Also been using **PX-Edit**, **PX-Batch** but only limited



SQL Datamodel or PX-files



SQL Datamodel or PX-files

Datamodel

- + Re-use of metadata
- + Large datasets (e.g. 10-20 GB)
- No common interface for updating data and metadata
- Complicated to setup and use



SQL Datamodel or PX-files

PX-files

- + Easy to create and manage, due to PX-Edit and PX-Make
- + Easy to share, overview and change
- Redundant metadata information
- More difficult to search and query



SQL Datamodel or PX-files

- Many different setups around the world
- Important to use a setup that suits your production process best



Features of the StatBank system

- Search: Adwords, synonyms, misspellings etc.
- Aggregate Time periods on the fly
- Manual Pivot: Drag and Drop
- Saved Queries
- Re-select from selection
- Time Series output / program
- DataShooting: One mail per day
- Comming up: Calculations



Services for Dynamic Updating

We offer:

- Saved queries
- Graphs and Maps – wrapped in XML
- XML feed through URL
- Web Service – HTML wrapped in XML
- Standardized deep links / Web queries
- [Example?](#)



Data and Metadata administration in SQL Datamodel

- Using in-house developed tools
- SumTimes: for databank administrators (centrally used)
- SumTools: for statisticians (decentrally used)
- Not easy to share with other countries



Dynamic web pages #1

- 200 topic sites built and automatically maintained via 300-400 saved queries and web service

EMPLOYED PERSONS

Area of workplace: All Denmark | Unit: Number

	2008	2009	2010	2011	2012
Commuting, total	2 857 565	2 801 519	2 684 992	2 667 424	2 673 552
No commuting	231 267	185 395	179 754	179 537	179 933
Up to 5 km	900 641	893 927	850 497	839 326	831 435
5-10 km	516 490	504 525	480 940	475 630	475 064
10-20 km	534 814	526 920	502 036	497 832	501 216
20-30 km	265 069	266 368	256 558	257 684	261 358
30-40 km	138 313	139 127	135 943	137 145	140 002
40-50 km	77 755	78 539	76 789	78 331	80 459
More than 50 km	185 939	199 832	195 522	195 315	197 210
Unknown	7 277	6 886	6 953	6 624	6 875

Footnote

In connection with the publishing of register-based labour force 2012 the statistics have been reviewed for the years 2009-2011. This matrix will also be reviewed for 2009-2011 as soon as possible.

Get your own statistics:

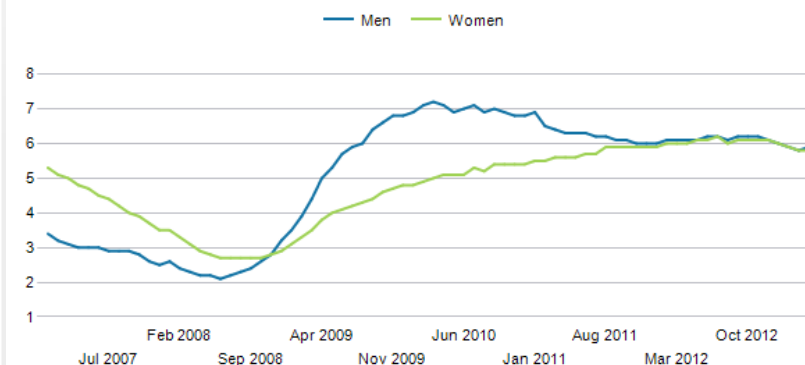
REGISTERED UNEMPLOYMENT

Key Figures

Documentation

SEASONALLY ADJUSTED FIGURES

Seasonal adjustment and actual figures: Seasonally adjusted figures in percent of the labour force for Benefits, sex and age:



Get your own statistics:

Dynamic web pages #2

- 42 indicators

SHORT TERM TRENDS

	Period	Value	Dev.		
National accounts			t/(t-1)		
Gross domestic product, real growth (DKK million, 2005-price level chain figures)	Q1/13	387,164	0.2		
Private consumption, real growth (DKK million, 2005-price level chain figures)	Q1/13	194,411	0.1		
Government consumption, real growth (DKK million, 2005-price level chain figures)	Q1/13	107,152	-2.1		
Investments in buildings and civil engineering works, real growth (DKK million, 2005-price level chain figures)	Q1/13	29,814	-2.1		
Other gross fixed capital formation, real growth (DKK million, 2005-price level chain figures)	Q1/13	42,097	0.7		
Imports of goods and services, real growth (DKK million, 2005-price level chain figures)	Q1/13	204,686	1.6		
Exports of goods and services, real growth (DKK million, 2005-price level chain figures)	Q1/13	214,802	-0.4		
Employment. National accounts (1000 persons)	Q1/13	2,788	-0.3		
Labour market			t/(t-4)		
Jobs. WTA (number)	Q4/12	2,890,593	-0.1		
Jobs. Hours worked, WTA (1000 hours)	Q4/12	924,467	-0.9		
Indices of average earnings in the private sector (1. qtr. 2005=100)	Q4/12	123.7	1.4		
Indices of average earnings in the public sector, central government (1. qtr 2005=100)	Q1/13	126.6	2.0		
Indices of average earnings in the public sector, local government (1. qtr. 2005=100)	Q1/13	126.1	0.6		
Registered unemployment			t/(t-12)		
Gross unemployment (converted into full-time) per cent of the labour force ²⁾	Apr/13	5.9	-0.1		

SumTools

SumTools1 Test Ver. 1.1.34

Files Actions Settings Help

Metadata

- Generel
- Variables**
 - OMRÅDE
 - ALDER
 - KØN
 - INDKOMSTTYPE
 - Tid
- Info
- Footnotes

Start load

- Load overview
- Load to database

Check data

- Check NRD

Generel

Table reference

Table: IB811

Table contains: 4 variables (excl. time)

Unit: Danish
1000 kr.

Base period:

Prices: I = Ikke relevant

Short presentation text: Indkomstbeløb for personer (i 1000 kr)

Long presentation text: Indkomstbeløb for personer (i 1000 kr) efter område, alder, køn og indkomsttype.

Subject: 06: Indkomst, forbrug og priser

Documentation: 001075 = Indkomster

Stored decimals: 0

Presented decimals: 0

Missing observations: N = Vises som Nul

Tables in databasen

- IA933U
- IA933UA
- IA951
- IA953
- IB811**
- IB812
- IB821
- IB821U

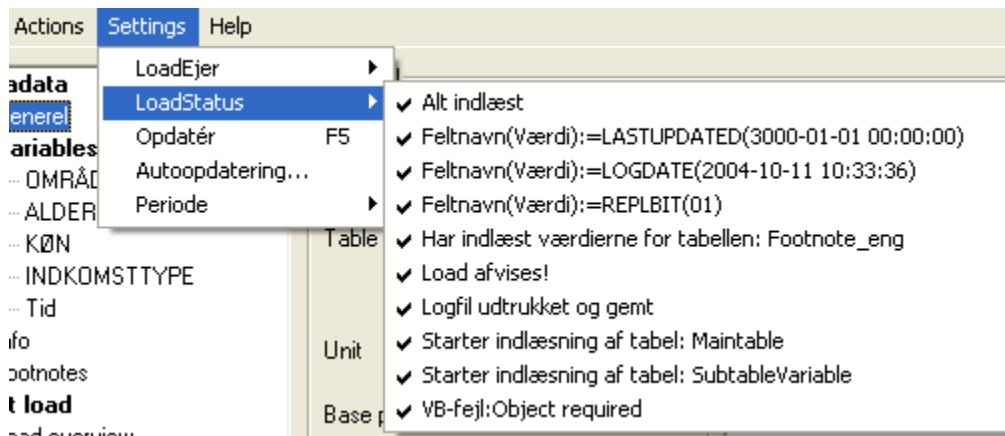
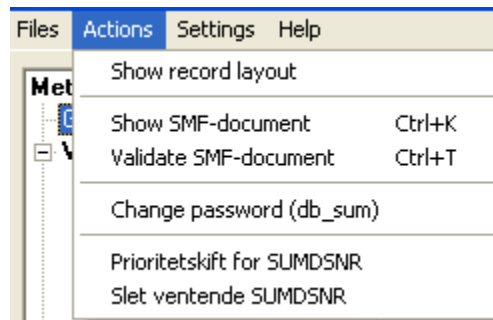
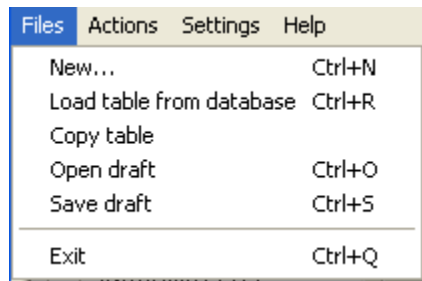
Income (personal)

Automatisk præsentationstekst

Income (personal) by region, age, sex and type of income.

Emneundergrupper

25-01-2005 11:09 LAK db_sux Klar



Metadata

General

Variables

OMRÅDE

ALDER

KØN

INDKOMSTTYPE

Tid

Info

Footnotes

Start load

Load overview

Load to database

Check data

Check NRD

Variables

Presentation text

alder

age

Code for variable

ALDER1

Value pool (VP)

ALDER

271

Value set (VS)

ALDER25

76

Apply

There are 13 values in ALDER25.

Kode	Tekst
15-19	15-19 år
20-24	20-24 år
25-29	25-29 år
30-34	30-34 år
35-39	35-39 år
40-44	40-44 år
45-49	45-49 år
50-54	50-54 år
55-59	55-59 år
60-64	60-64 år
65-69	65-69 år
70-74	70-74 år
75-	75+ år

Metadata

General

[-] **Variables**

OMRÅDE

ALDER

KØN

INDKOMSTTYPE

Tid

[+] **Info**

Footnotes

Start load

Load overview

Load to database

Check data

Check NRD

Info

Time period info

Code for time scale

år

Presentation text

år

Format

yyyy

Tabellen blev sidst opdateret 2003-05-28 00:00:00 af JZU.

Contact information

Organisation

DST

DST

Kontor

17

17

Kontaktperson

JZU

JZU

Metadata

General

☐ **Variables**

OMRÅDE

ALDER

KØN

INDKOMSTTYPE

Tid

Info

Footnotes

Start load

Load overview

Load to database

Check data

Check NRD

Footnotes

Dansk fodnote

Engelsk fodnote

This could be the footnote for the table, which will be included in the PC-Axis files, and consequently in the online databanks as well.

☐ Vis altid fodnote før tabel

Footnotes in both languages...

Metadata

General

[-] **Variables**

OMRÅDE

ALDER

KØN

INDKOMSTTYPE

Tid

Info

Footnotes

Start load[Load overview](#)

Load to database

Check data

Check NRD

Overview

SumDSNr	Tabelreference	Start	Stop	Status	Ident	Rækker
105322	TEST102	2005-01-25 10:06:21	2005-01-25 10:06:48	Load afvises!	TIB	2
105320	TEST101	2005-01-25 09:12:11	2005-01-25 09:12:46	Alt indlæst	TIB	2
105318	TEST100	2005-01-24 15:16:03	2005-01-24 15:16:31	Load afvises!	TIB	
105297	TIBAKAS	2005-01-20 15:15:49	2005-01-20 15:16:25	Alt indlæst	TIB	
105065	MLP3	2004-12-01 11:51:05		Har indlæst værdierne for tabellen: ...	MLP	(*)12

Metadata

General

- Variables

OMRÅDE

ALDER

KØN

INDKOMSTTYPE

Tid

Info

Footnotes

Start load

Load overview

Load to database

Check data

Check NRD

Transfer

Read data from...

☒ SDF-file on disk☐ Table or view in database

SDF-file on disk

Find DataFil

Skille tegn: Tabulator

Table or view in database

Database

DB_USY

Table or view

Off.dato (åååå-mm-dd)

2005-01-25

IB811 bliver/blev offentliggjort
2003-03-13

Priority

1. Alm. prioritet

Table status

Access

Offentlig

Copy to

☒ Statistikbanken

First time a table is loaded, it must be decided where it should be published in the future (cannot be changed without admin rights).

Load to database

Udvælgelse af undergrupper til områderne

06: Indkomst, forbrug og priser

Ok

Annuller

06: Indkomst, forbrug og priser

07: Generel erhvervsstatistik

08: Landbrug

09: Industri

10: Byggeri og boligforhold

11: Serviceerhverv

12: Transport

13: Udenrigshandel

☐ Familieindkomster

☐ Familier med skattepligt (1983-90)

☐ Forbrug

☐ Forbrugsundersøgelsen 1987 (husstande, personer)

☐ Funktionærløn

☐ Huslejestatistik

☐ Indkomster/fradrag fra selvangivelsen

☐ Informationsteknologi

☐ Løn

☐ Personbeskatning. Kommunale udskrivningsprocenter

☒ Personindkomster

☐ Prisindeks

☐ Skattepligtige personer

☐ Skattepligtige/bruttoindkomster

☐ Tvangsauktioner

☐ Historiske tal - afsluttede serier

Antal valgte undergrupper:

1

Future setup ...

- Using as much of PX-Web.Net as possible
- Develop part we need in-house
- Re-write administration tools to .Net



Development of PX-Products

- StatBank web interface towards SQL datamodel
- PX-Make
- PX-iGraph
- PX-Publ
- .Net: Menu object model and new PX-iGraph



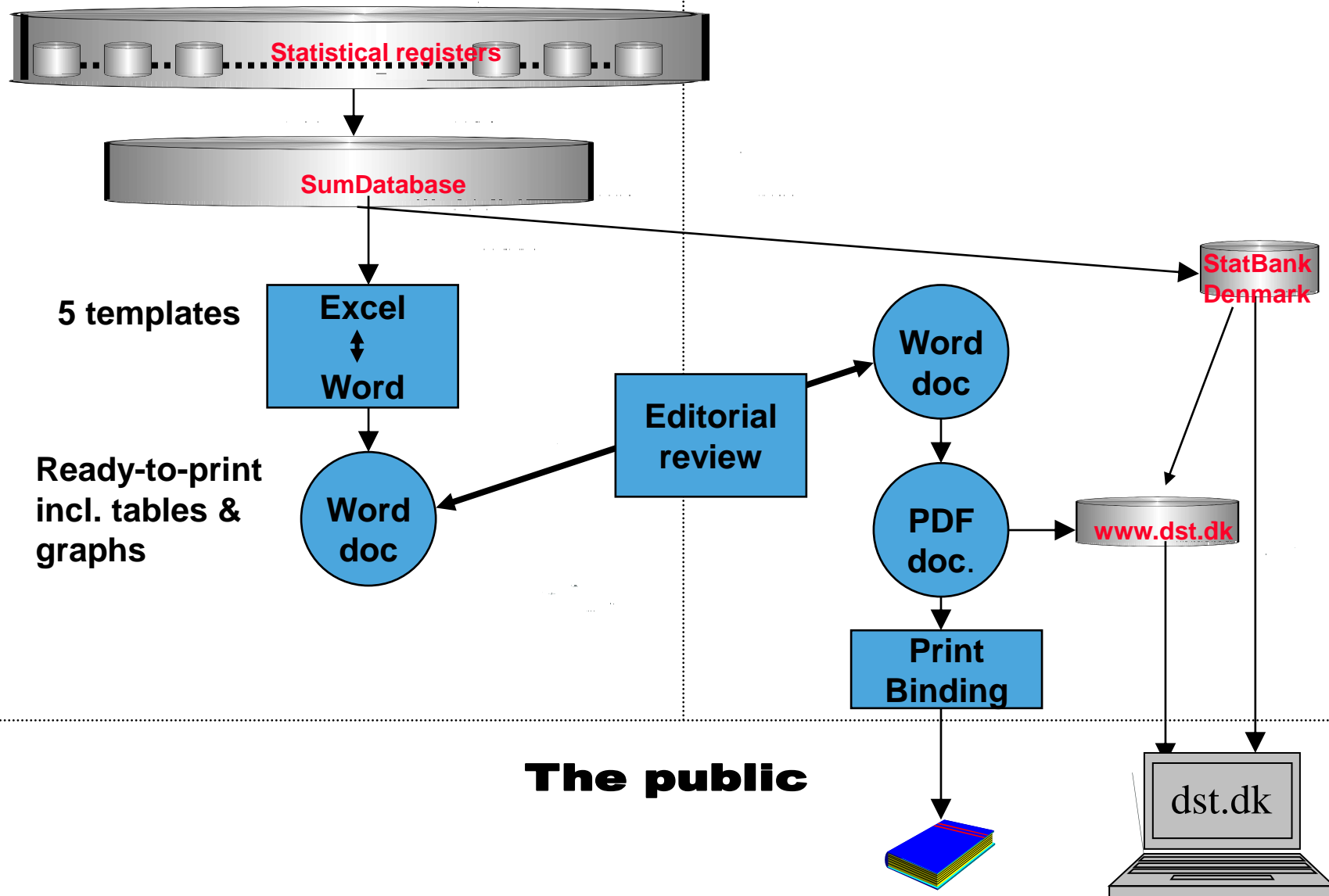
From Database to publications

- PX-Publ: Retrieves data from SQL Datamodel, into Excel and Word



Author (Subject matter division)

Publishing & IT Centers



Features of PX-Publ

- Retrieve data dynamically from database
- Easy updating of data tables in publications
- Ensure relationship between databank table and publication
- Make table editing in Excel possible
- Ensure consistency between web and paper releases

