

# **Support to the Israeli Central Bureau of Statistics in Improving the Quality of Official Statistics**

## **Activity D.6: Design specifications of a geo-spatial application to allocate interviewers' workload in multi-field surveys and to manage and monitor field surveys**

**10-12 September 2017**

# Vision

**One system:**

**Multi Surveys System (MSS)**

**That allow multi collection methods**

# T+5 years Goals

## The system (MSS)

The survey department will work with multi-surveys collection system (MSS)

- MSS will combine all needs into one management system for all data collection surveys and stages
- MSS will provide a platform for all field collection methods
- MSS will work online
- MSS system will interface with service systems

# T+5 years Goals Flexibility

MSS will be flexible in varies aspects:

- moving sample units between data collection methods
- Moving sample units between data collection field staff, including transfer between districts
- Moving interviewers between districts and managers

# T+5 years Goals

## User interface

- The user interface will be user friendly
- MSS will allow visualize data using: maps, graphs and tables that are integrated and respond to each other
- MSS will work with GPS tools: for navigating, work plan and monitoring interviewers in the field

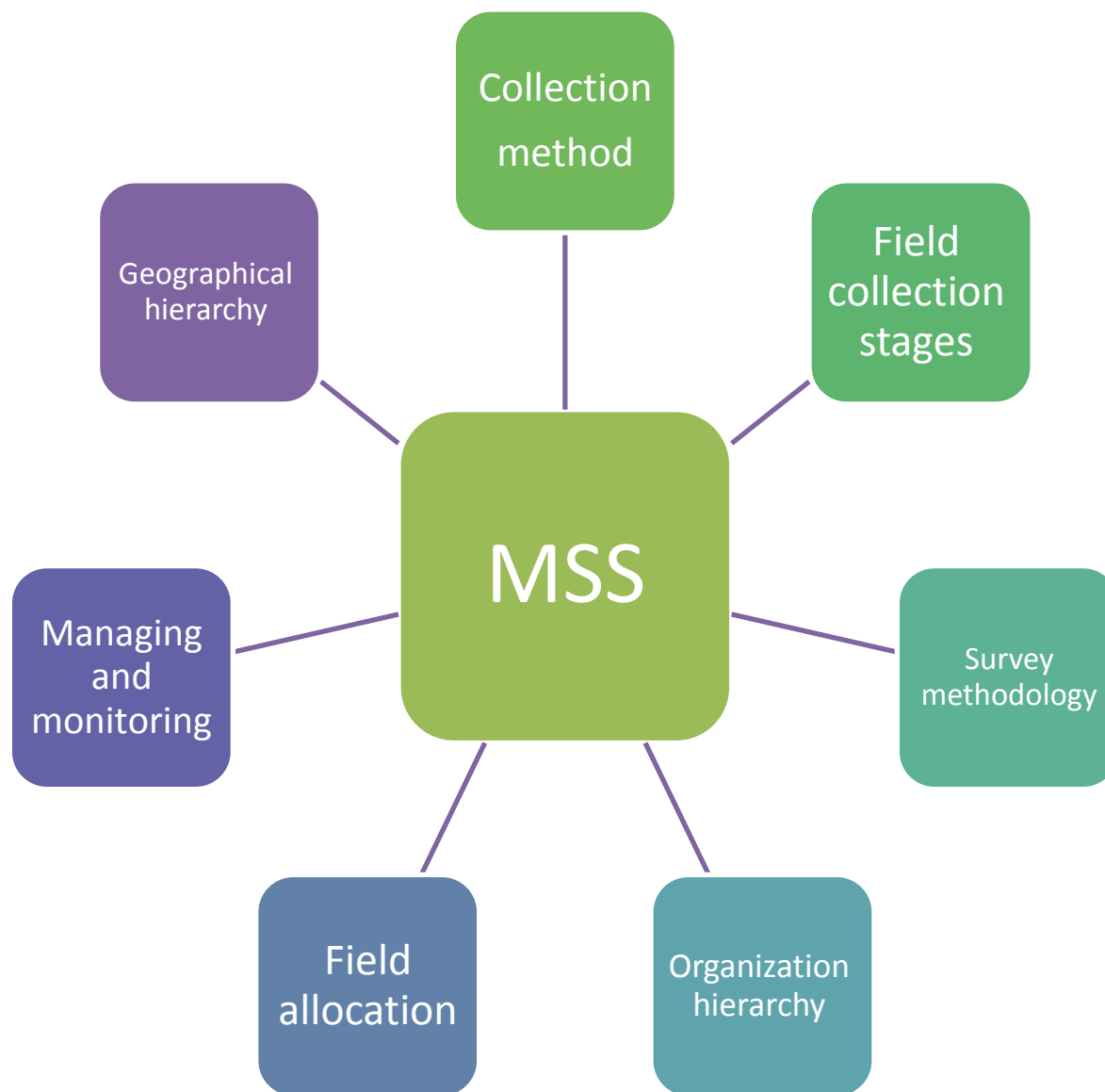
# MSS Interfaces



# MSS Principals

- MSS is an hierarchal system:
  - Every Player will have access to his function
  - Every player will have access to the function of the plyer below him
- MSS allows monitoring of one survey or more
- MSS based on geographical infrastructure and allows manage through geography
- MSS allows managing by periods of time

# The Multi Survey System - MSS





# Field collection stages

Pre Field collection

Field collection

Closing field collection

# Field collection stages

- 1. Pre Field collection**-All the preparation in the office before real time data collection.
- 2. Field collection**-Real time data collection using different collecting methods and combining several surveys.
- 3. Closing field collection**-The closure is per survey, For every survey.

# Pre field collection main activities

Preparing the field work:

- Survey parameters definition
- Training
- Enumeration products preparation (letters exec)
- Questionnaire design
- Pretest

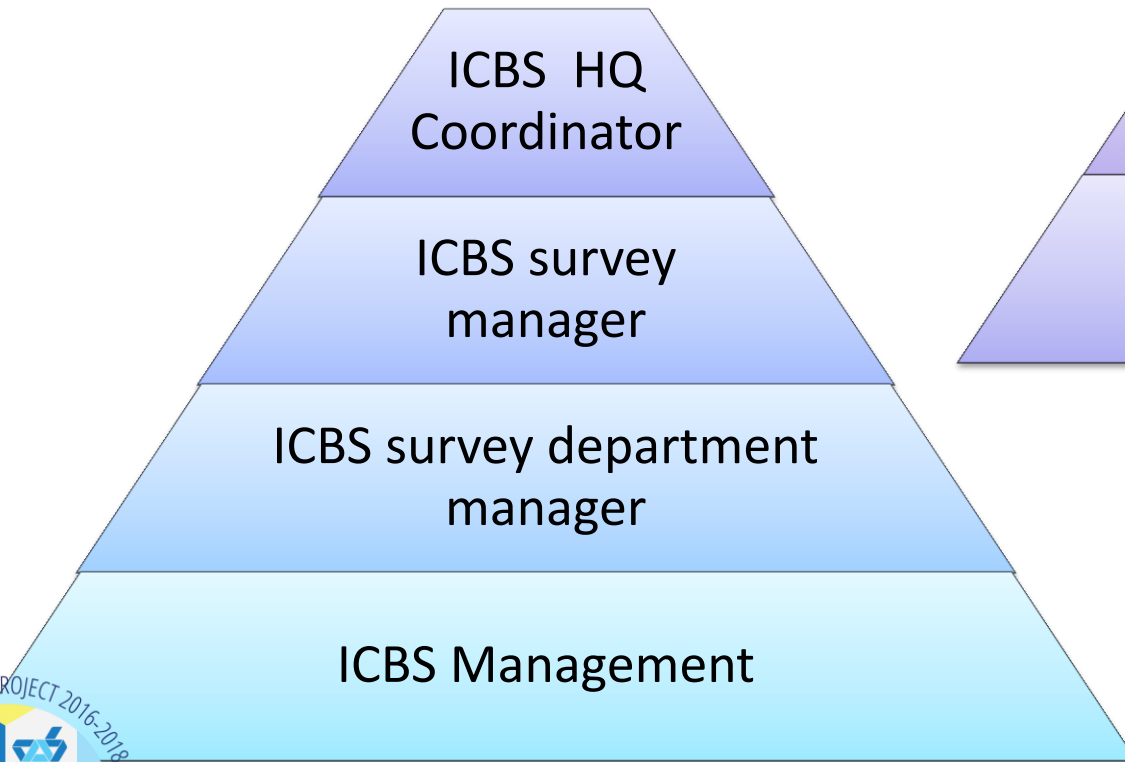
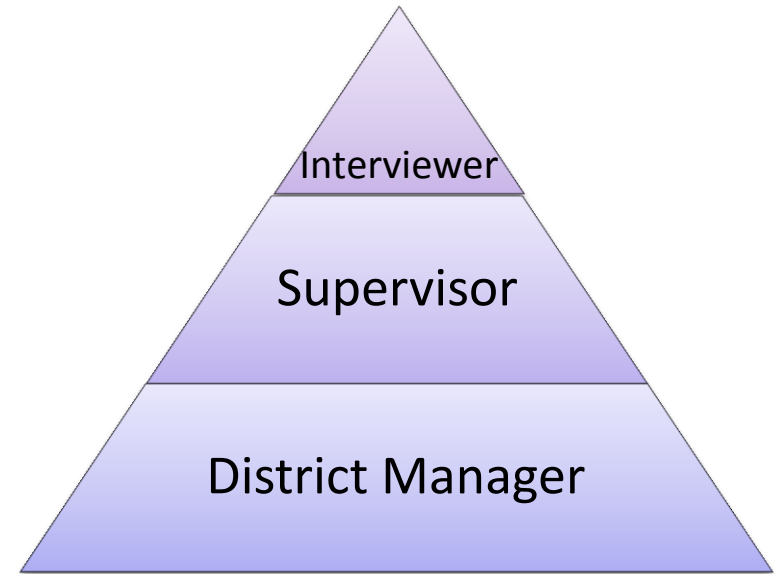
# Field collection main activities

- Data collection (Questionnaires)
- Data collection statuses: reports and visualization tools for managing and monitoring
- Quality analysis of the data collection: Via administrative files and telephone; Help desk

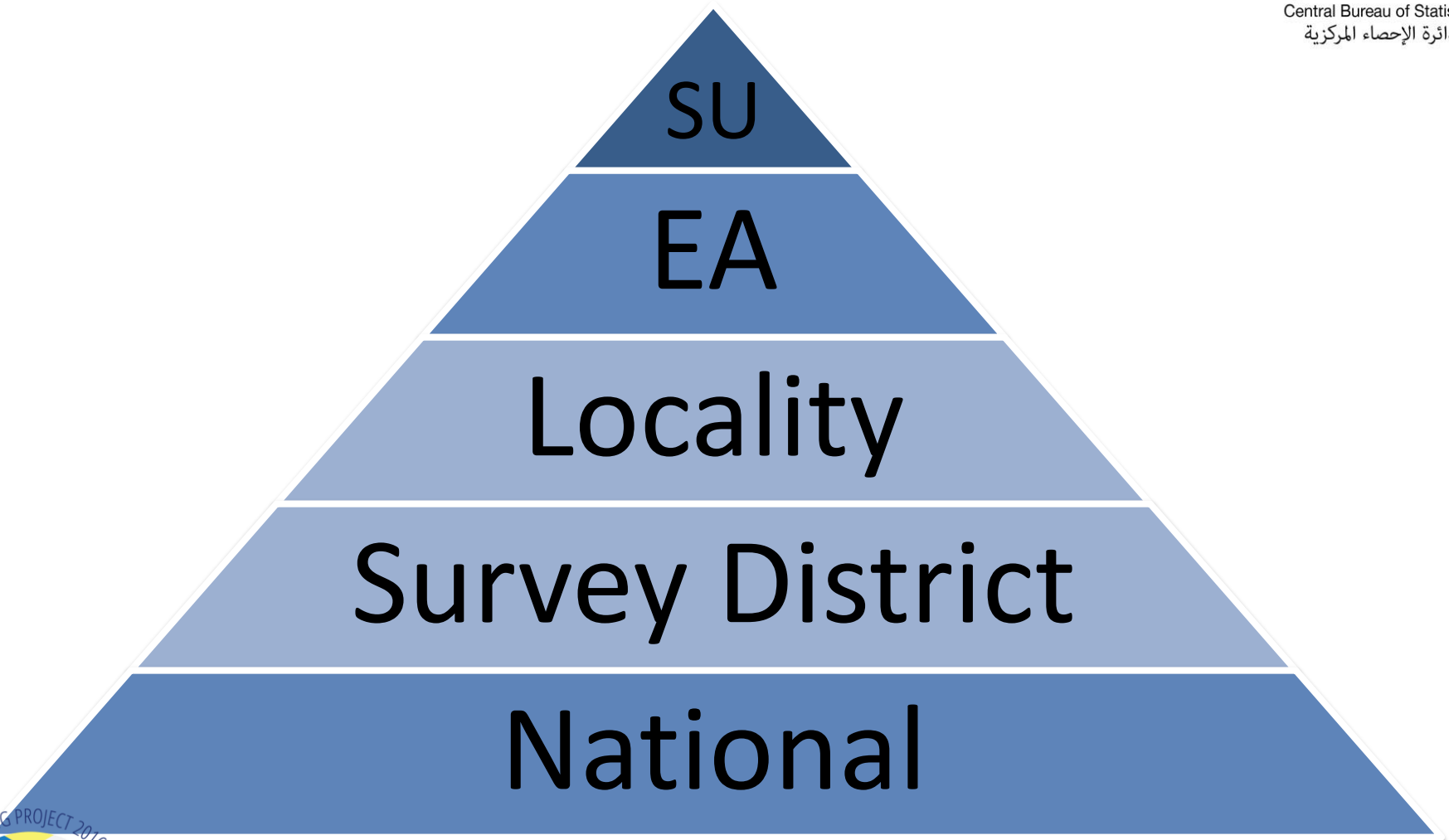
# Closing field collection main activities

- Final reports and future recommendations
- Closure of non respondents
- Closure of database and final editing

# Organization hierarchy



# Geographical hierarchy



# The structure of the story board

- Each presentation will present one player
- By work flow stages (before, during and after)
- In each stage we'll present the functionality
- In each function we'll show the input, the output put and the process





Player

# Functionality: Full questionnaire

input

output

Survey and  
stage of  
Questionnaire

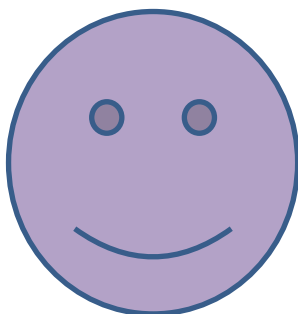
Full  
questionnaire

work completed

Process

Example

# Main Players in the MSS



ICBS survey  
manager



District  
Manager



ICBS  
Coordinator



Supervisor



Interviewer

# Thank you

## Questions ???