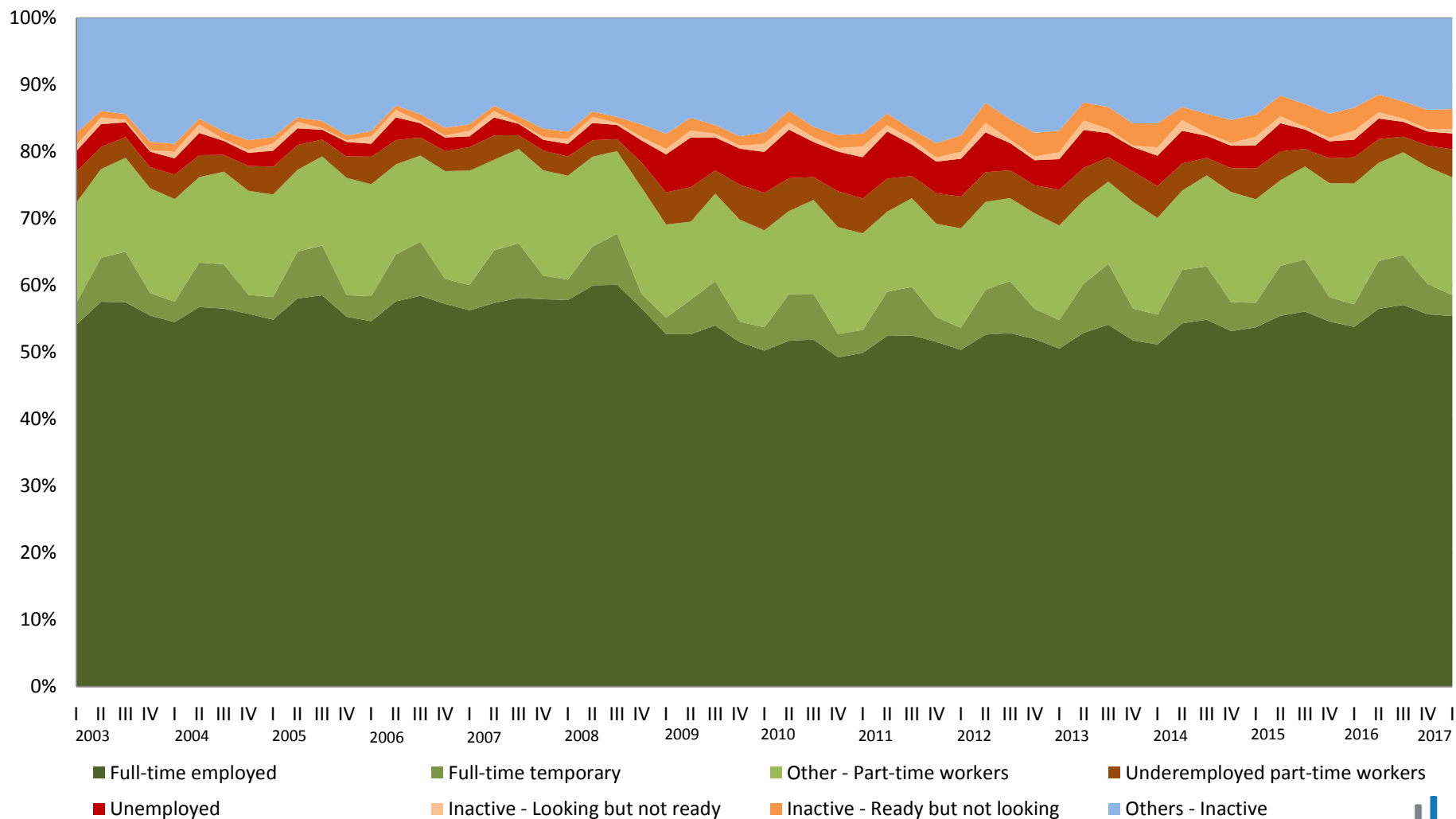


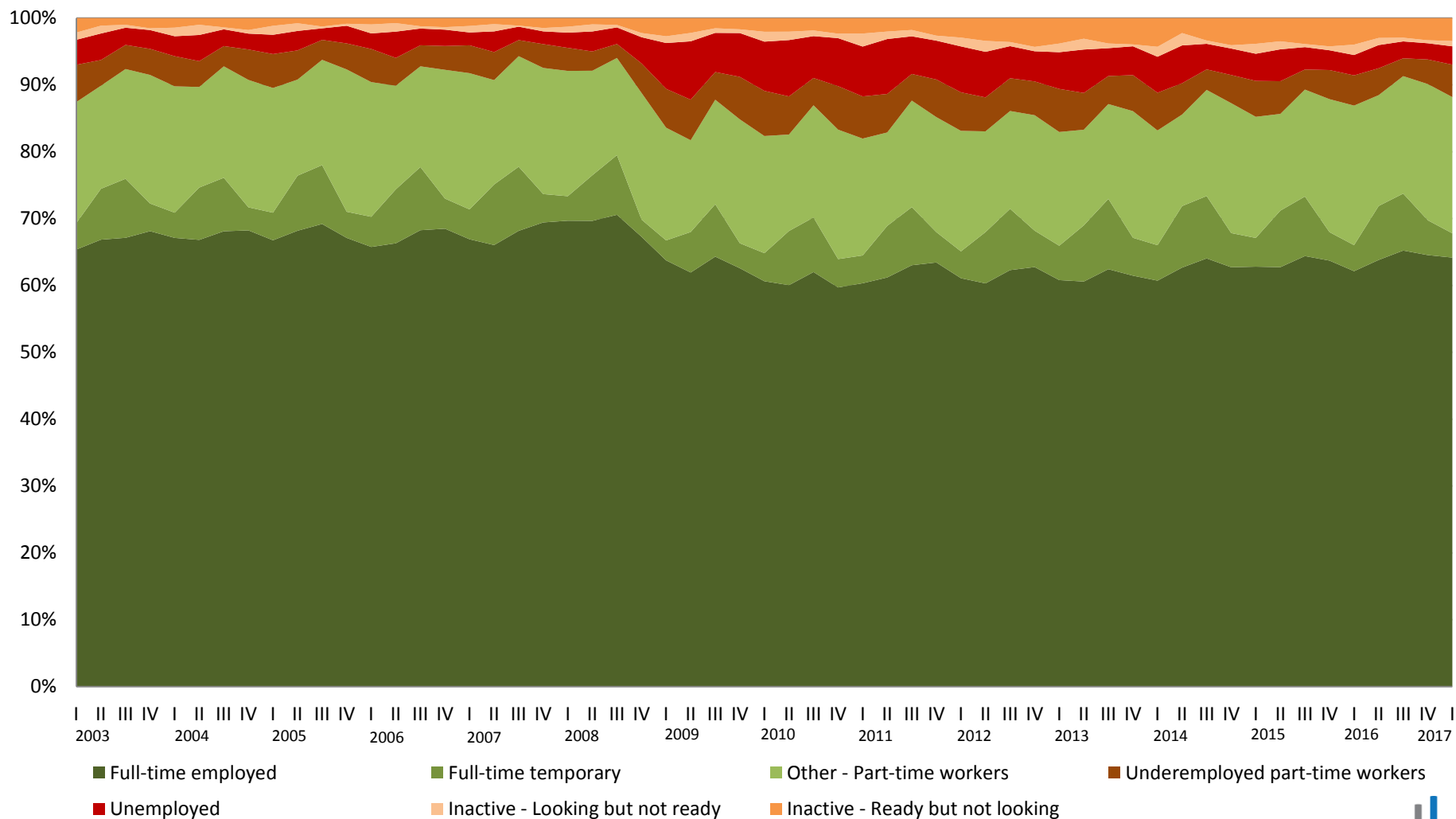
# Accuracy in the IS-LFS



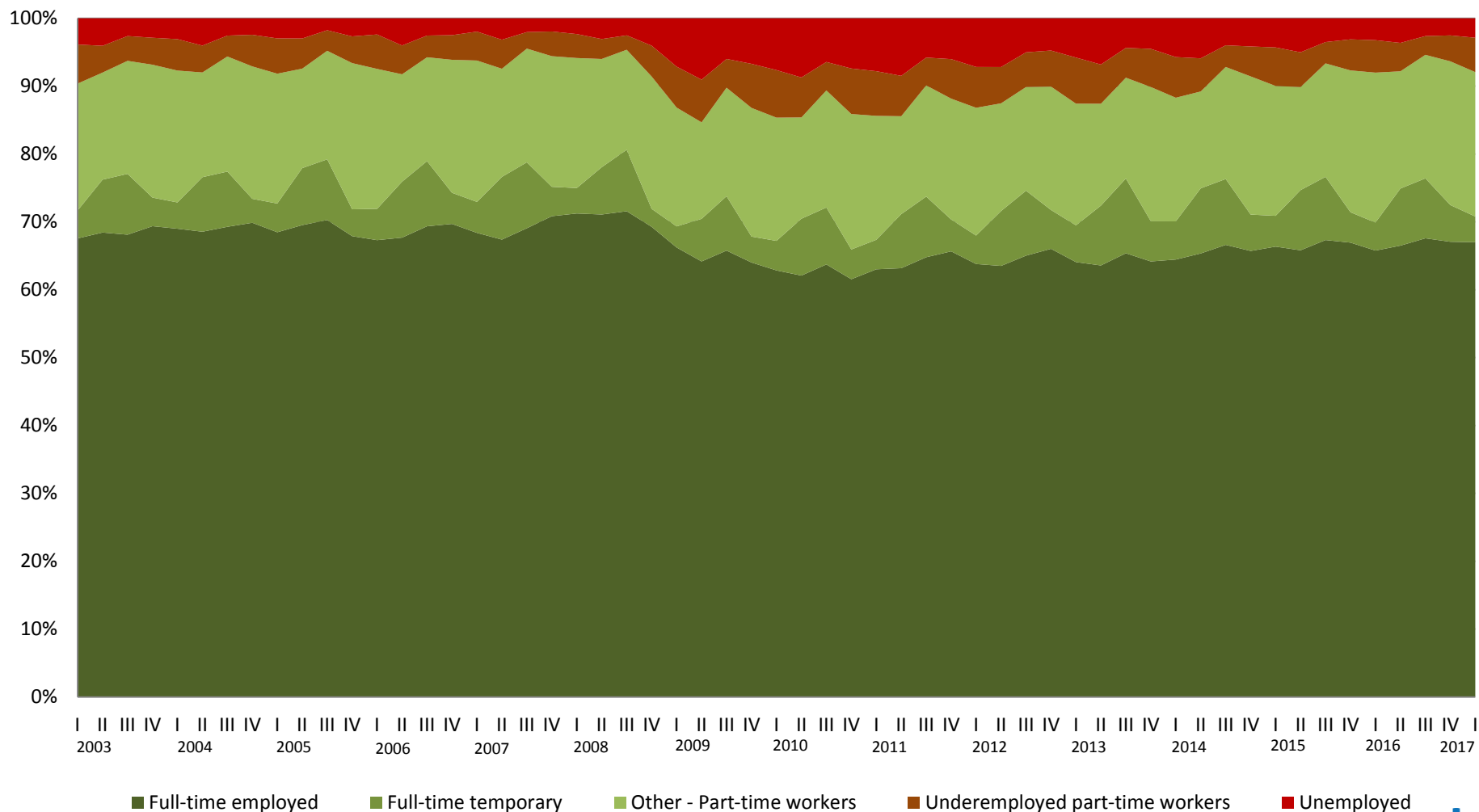
# The landscape of Icelandic population



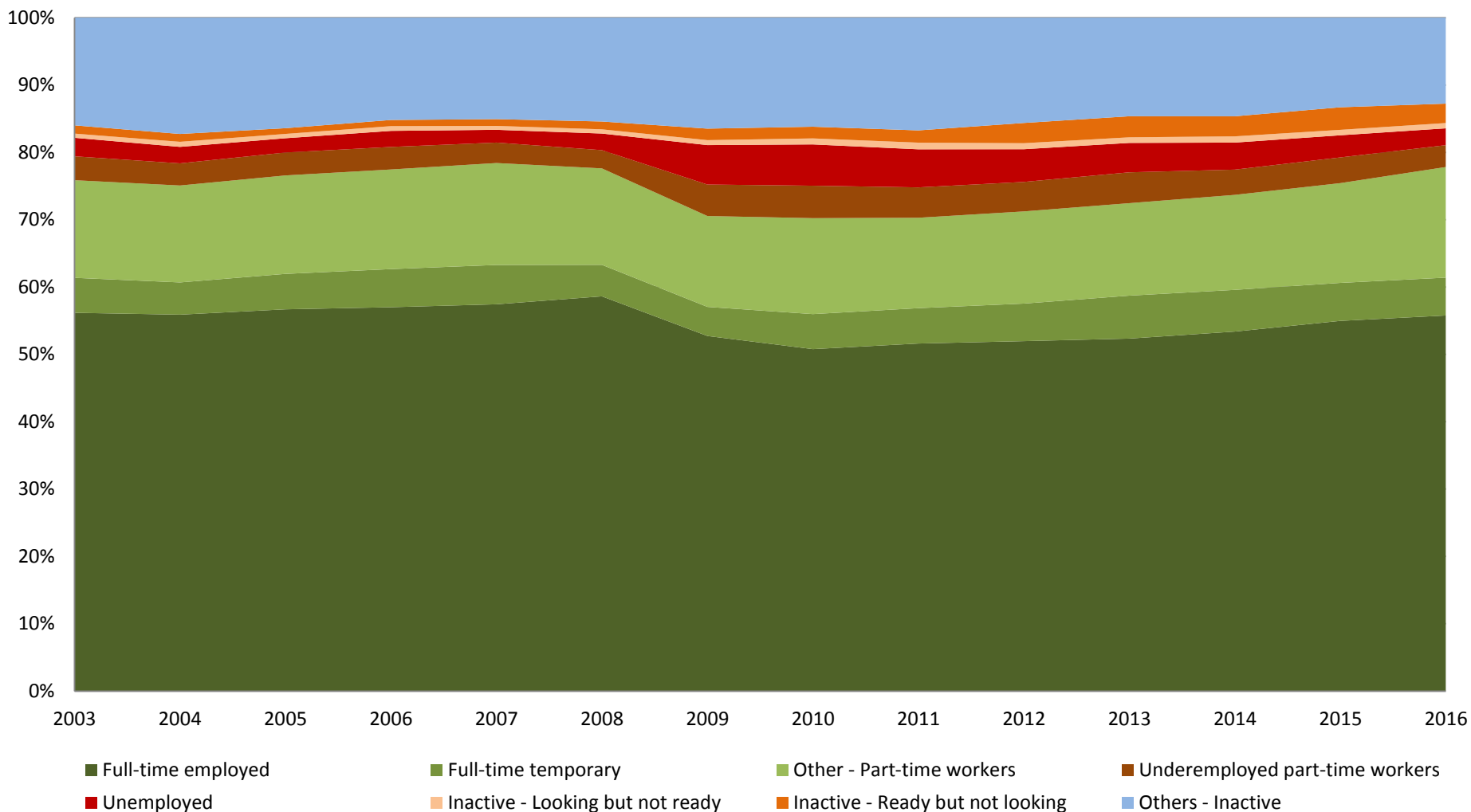
# Labour force and potential labour force



# Icelandic labour force



# Yearly estimates – “New ILO”

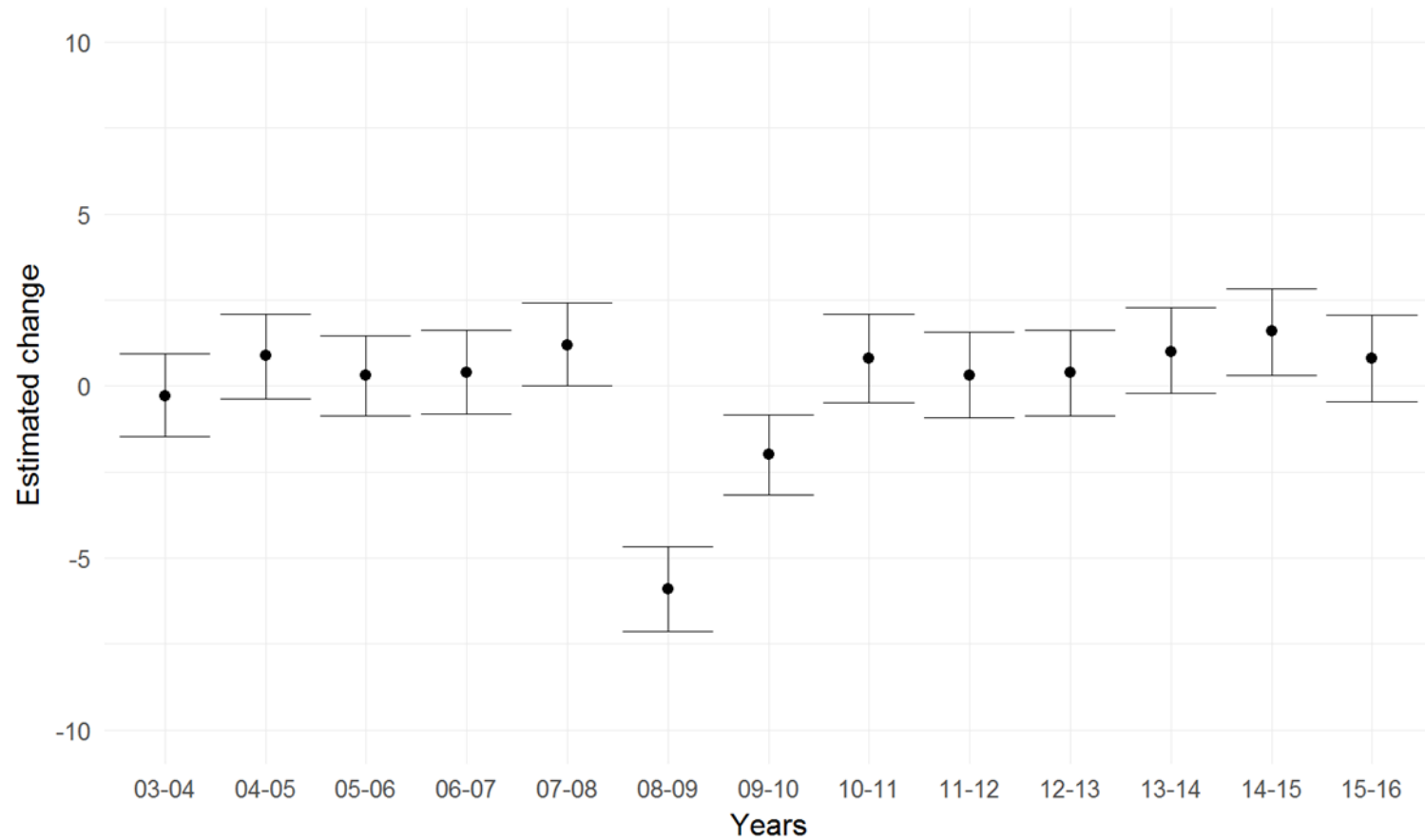


# Method

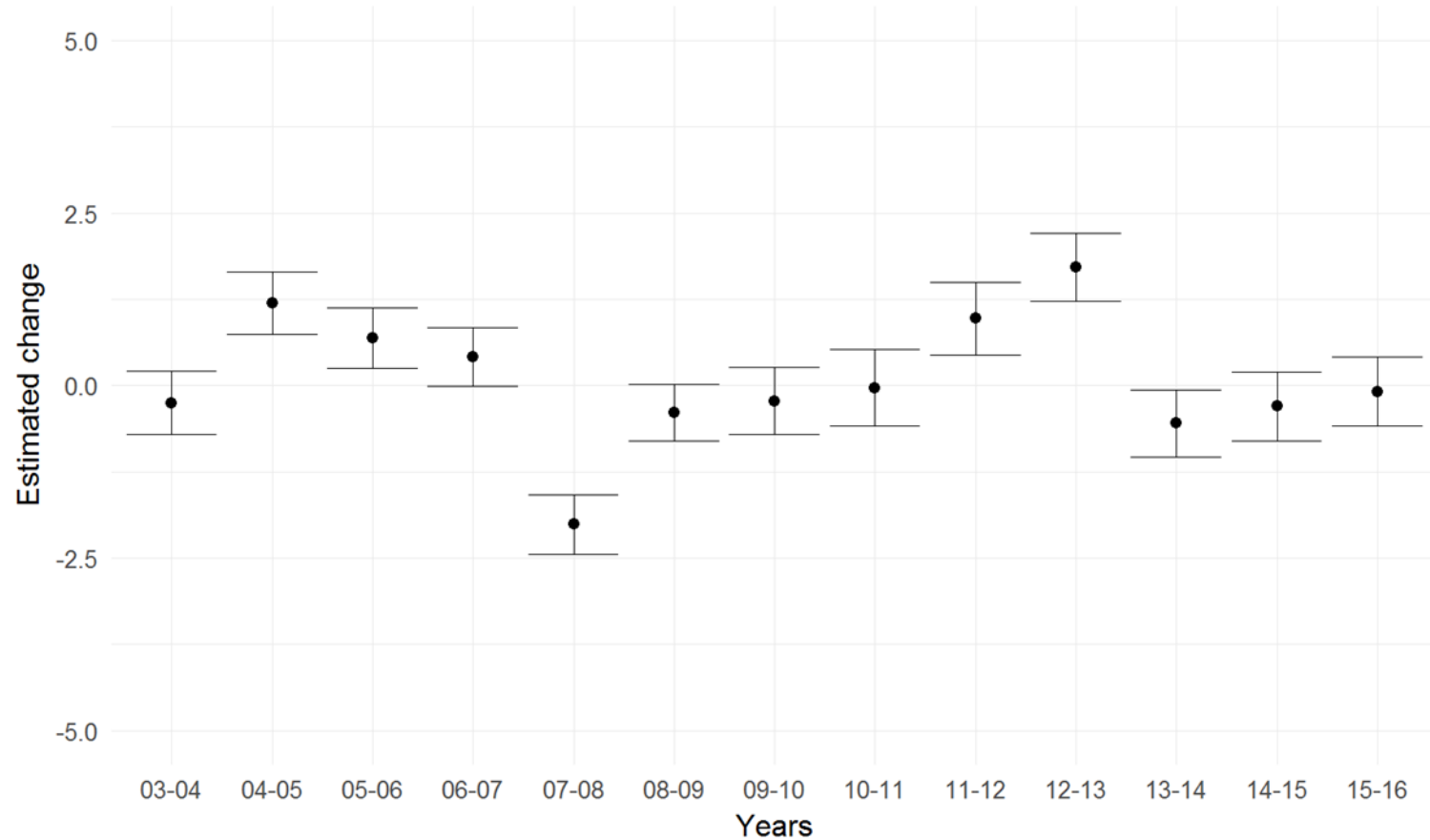
- Full-time employment
- Full-time temporary employment
- Part-time employment
- Underemployment

Bootstrap – 1000 replicates

# Full-time employment

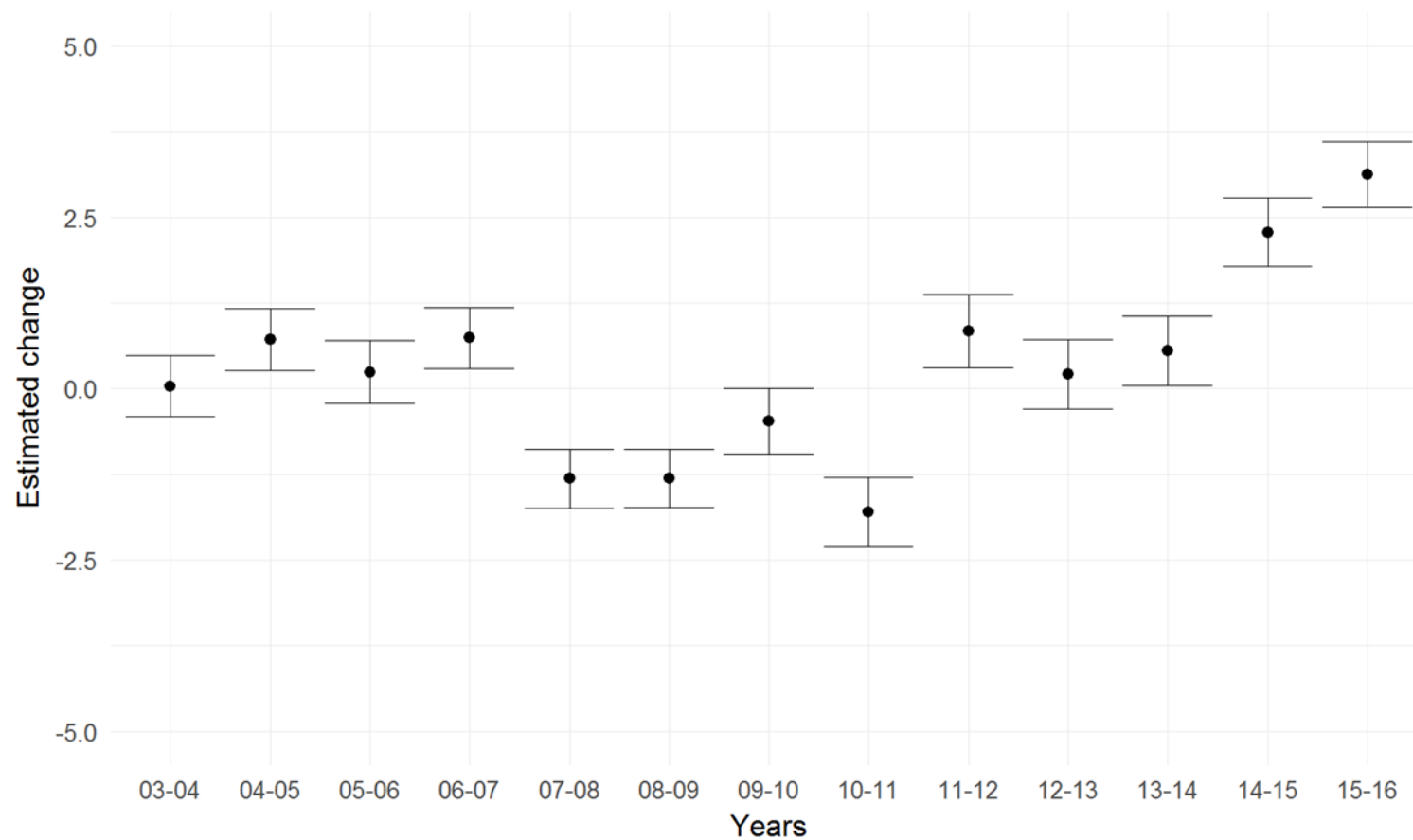


# Full-time temporary employment

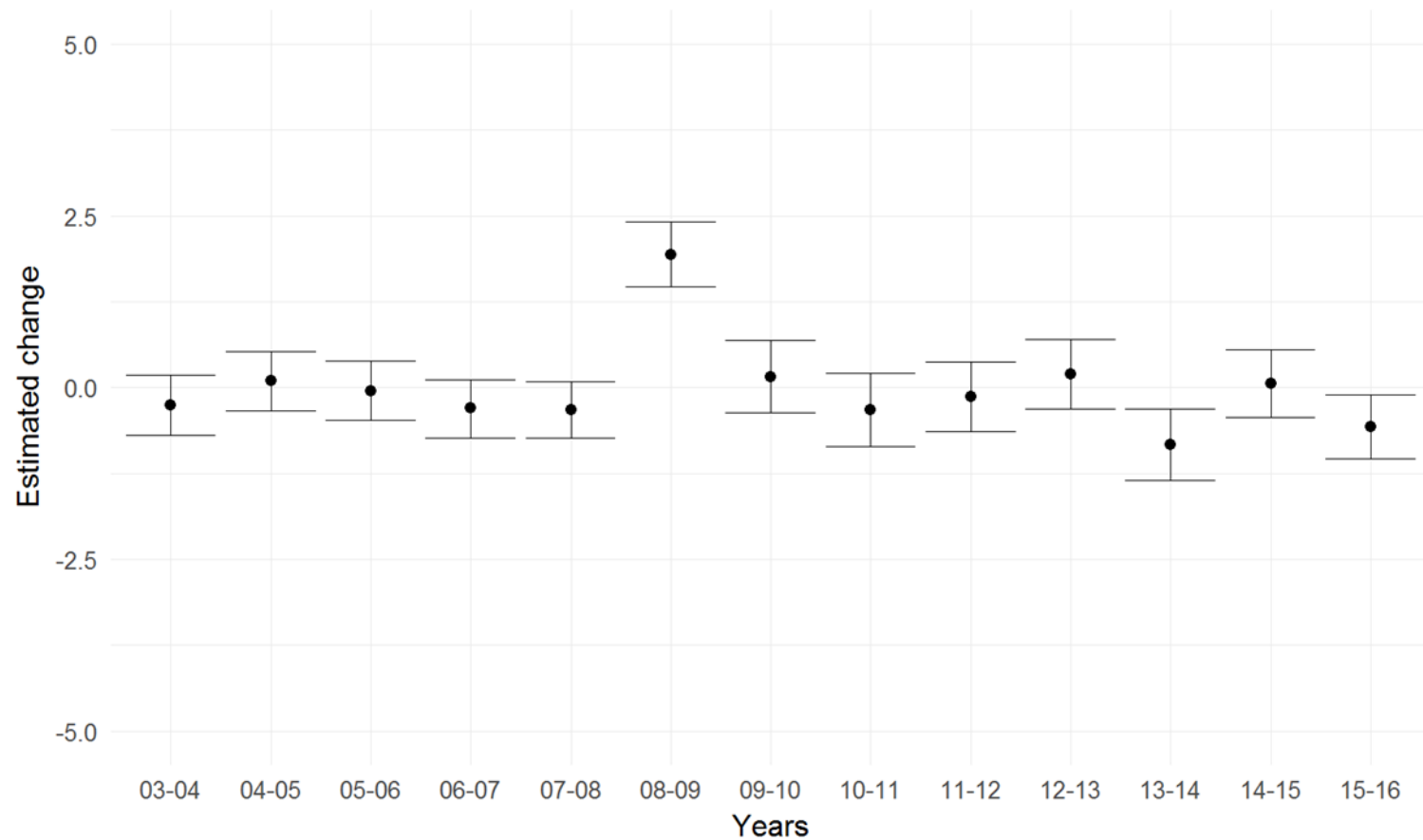




# Part-time employment



# Underemployment



# Conclusion/Discussion

- Paints a better picture of the annual changes
- Better chance to examine the data more accurately and draw more “valid” conclusions
- “Sound” methodology

BUT!

- Not perfect