



הלשכה המרכזית לסטטיסטיקה  
Central Bureau of Statistics  
دائرة الإحصاء المركزية

# **Israel Central Bureau of Statistics**

**It's All in the Numbers**



# The Central Bureau of Statistics

- Unit affiliated with the Prime Minister's Office
- An apolitical independent entity
- Statistics Ordinance [New Version] – 1972
- Public Advisory Council for Statistics
- Official statistics in accordance with the standards of international organizations (UN, IMF, OECD)



# Roles of the CBS

Data and information collection on the topics of  
demographics, society and economics,  
processing the data and publication

**The collected information is the basis for  
the State of Israel's official statistics**



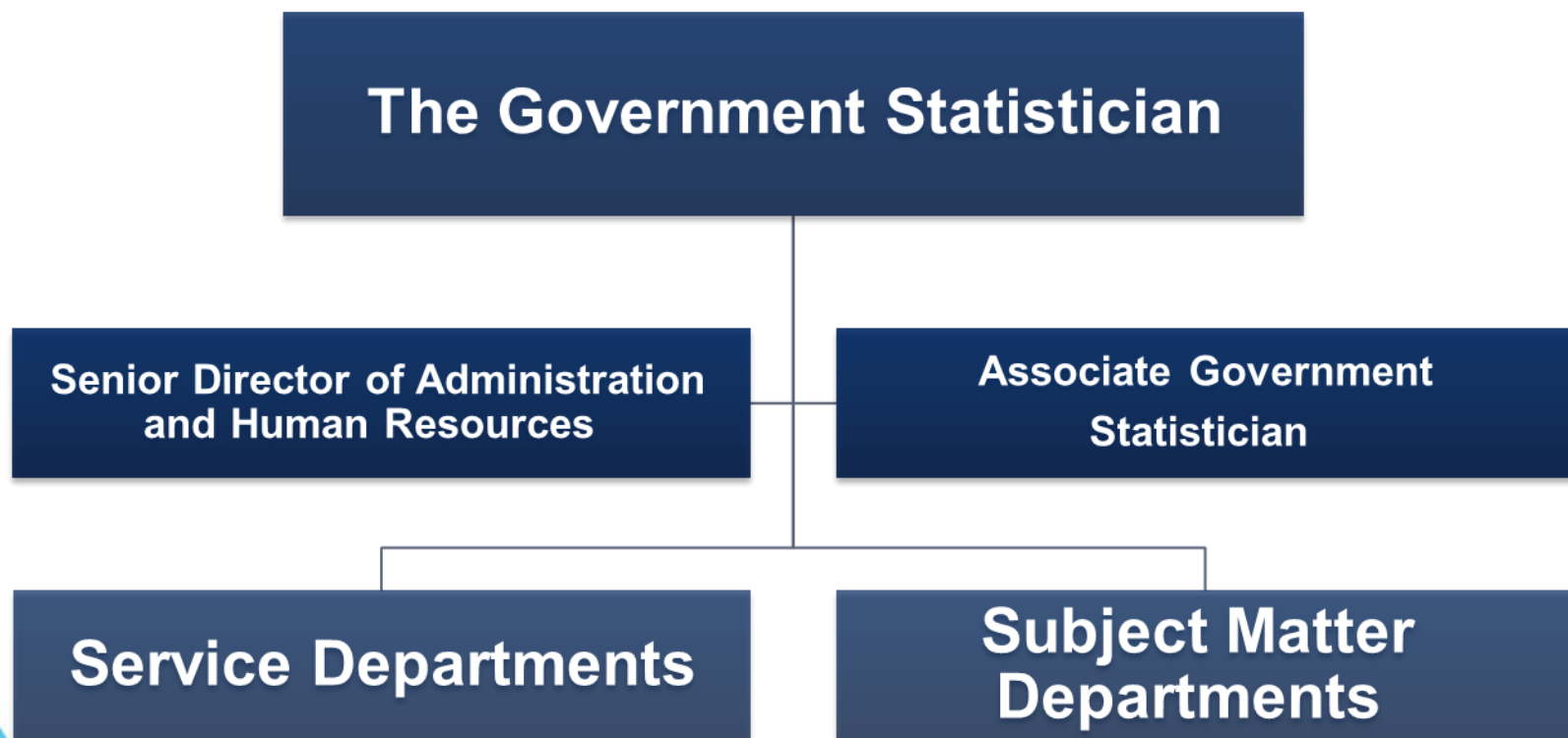
# Roles of the CBS

Based on the Statistics Ordinance, the CBS is obligated to keep the information confidential and the public is obligated to cooperate with the CBS interviewers.

**Cooperation with CBS interviewers is vital for updated and reliable statistical information**



# The Organizational Structure of the CBS





# The Government Statistician

Senior Director of Administration  
and Human Resources

Associate Government Statistician

Service Departments

Subject Matter  
Departments

Infrastructure Statistics  
Department

Business Statistics  
Department

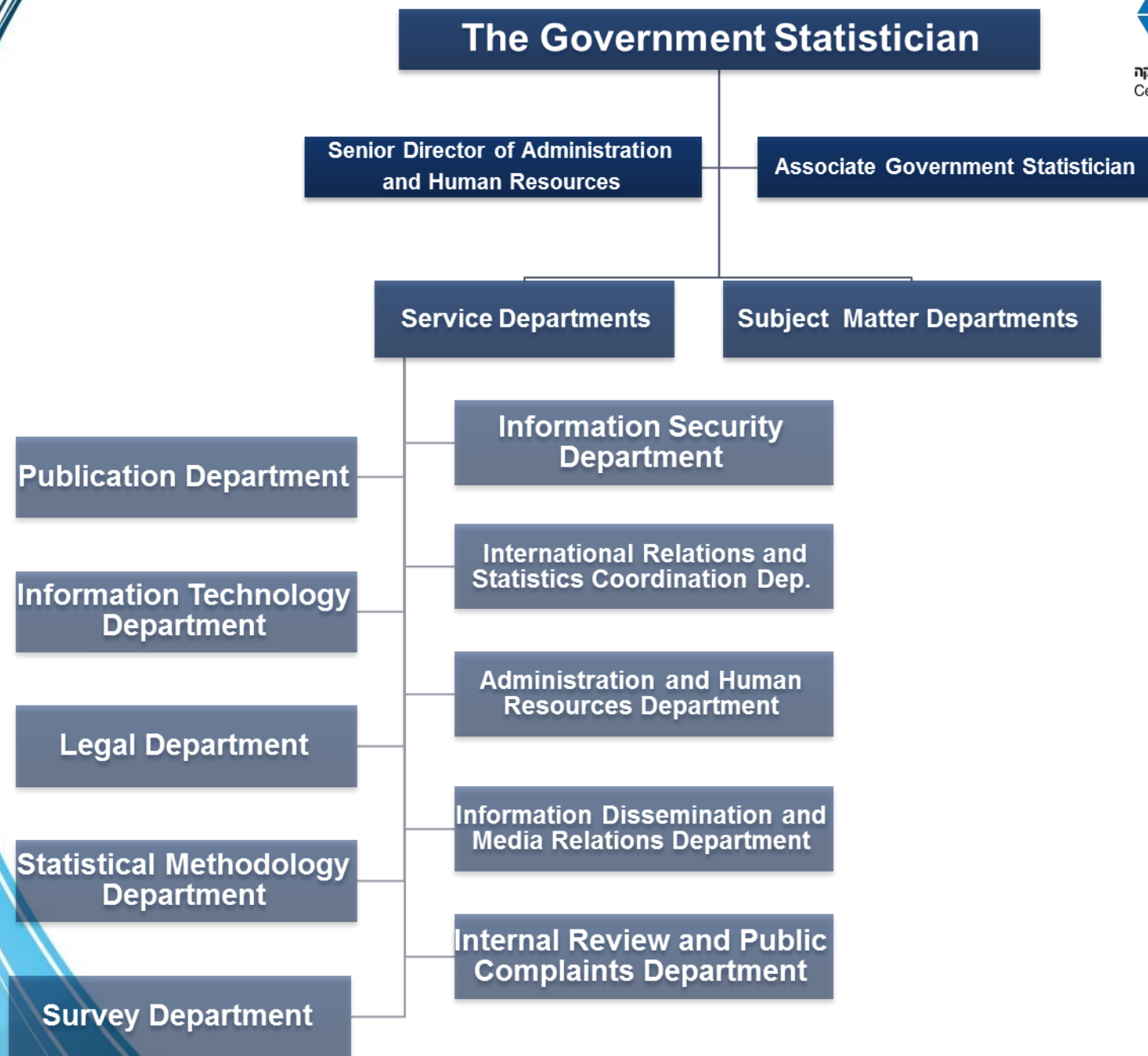
Demography and Census  
Department

Macro-Economic Statistics  
Department

Department of the Chief  
Scientist

Micro-Economic Statistics  
Department







# How are Data Collected?



Administrative Files



Surveys



# Administrative Files

The CBS receives administrative files from state institutions:

- National Insurance Institute
- Ministry of the Interior
- Local Authorities
- Universities
- Israel Police
- And more....

**The CBS processes and publishes the data  
that is obtained from these files  
as statistical summaries**



# Surveys

## Household Surveys

- Household Expenditure
- Labour Force Survey
- Social Survey
- Population Census
- And more

## Business Surveys

- Price Indices
- Manufacturing Indices
- Construction Surveys
- Job Vacancy Survey
- And more

**CBS surveys are conducted face to face,  
by telephone, on the Internet,  
by post and by fax**



# Users of CBS Data

- The governmental sector and local authorities
- Research institutes
- Private and public companies
- The media
- International organizations
- Students and pupils
- The public at large