

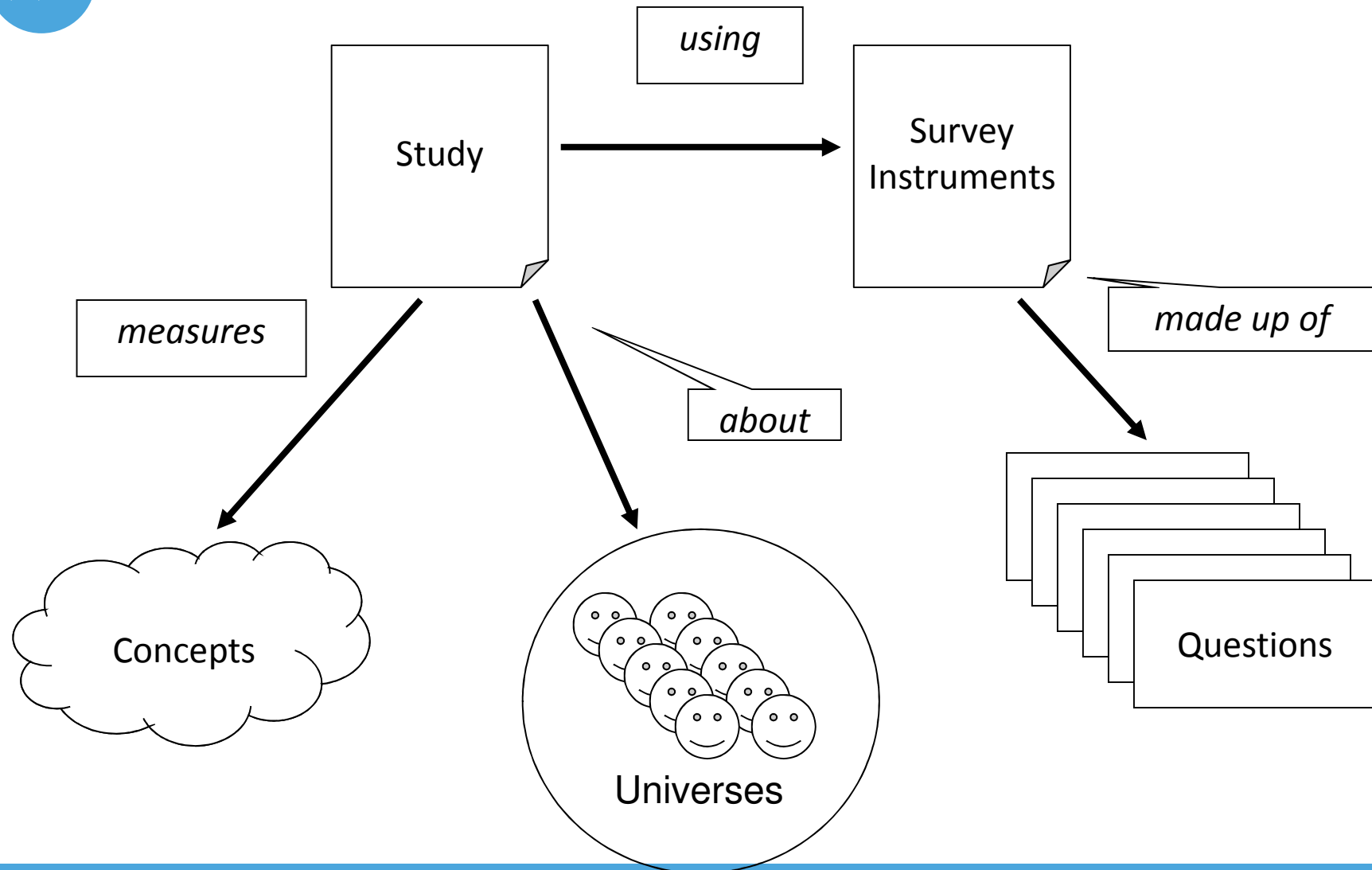
DDI and SDK

Bosnia

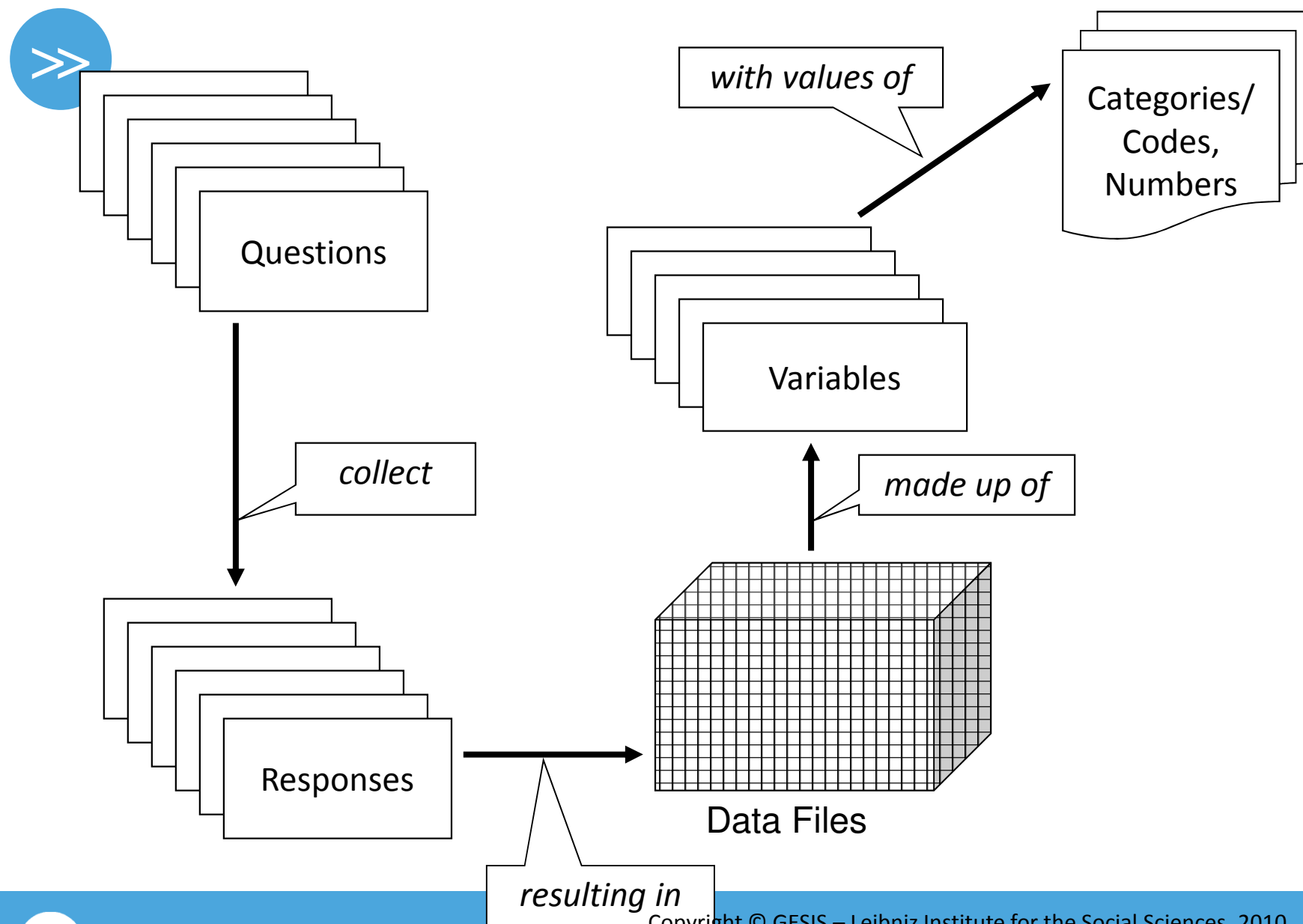
20 June 2013



Statistics and DDI in 60 seconds



Statistics and DDI in 60 seconds



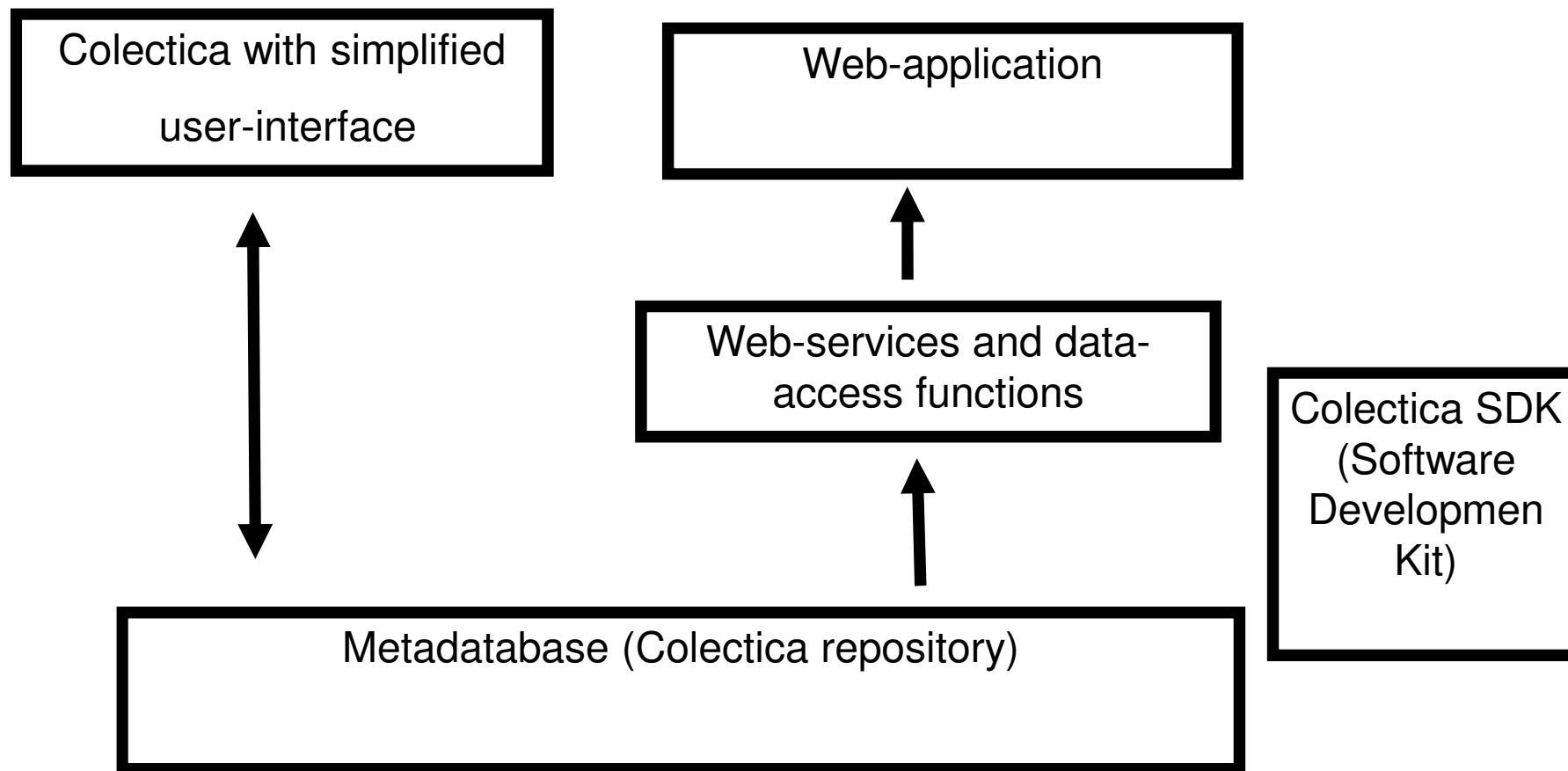


DDI-structure combined with ESMS/ESQRS – using Colectica

Project (DDI instance)

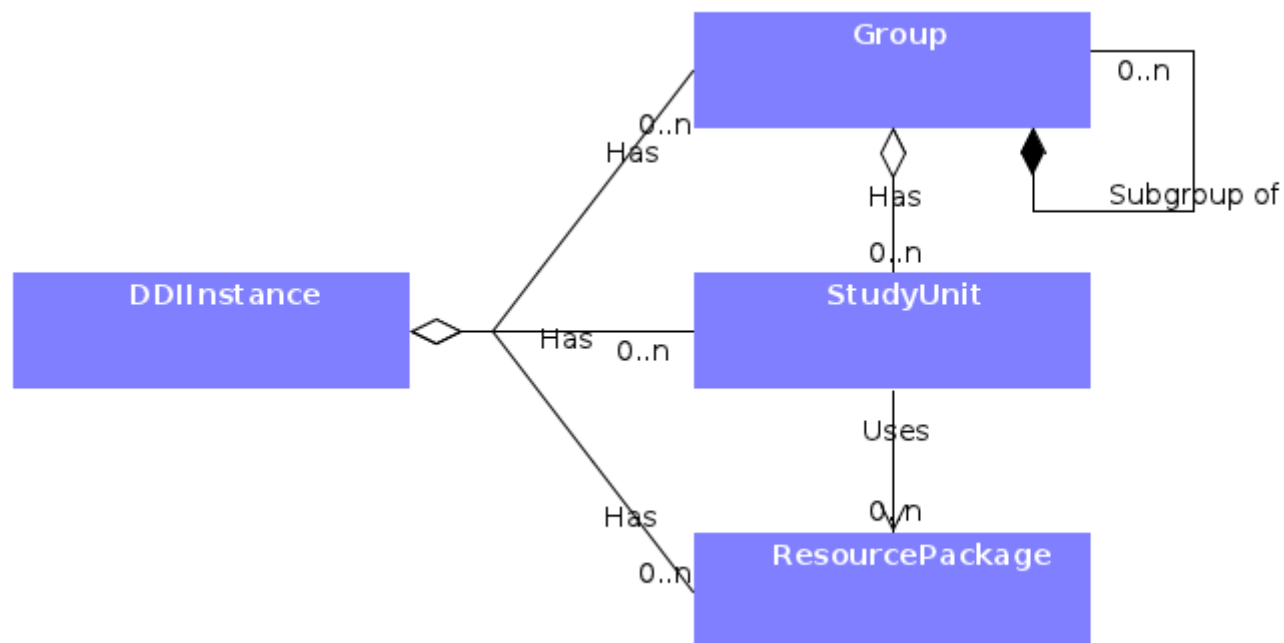
- Universe-scheme → Universe
- Group (in Colectica: a serie for each survey)
 - Study unit
 - Universe-reference
 - Variablescheme-reference
 - Ressource-package
 - Conceptscheme → Conceptw
 - Categoryscheme → Category
 - Codescheme → Code
 - Variablescheme → Variable
 - Quality Declarations(quality statement) with references to concepts, universe etc.

>> Metadatabase and software





DDI – top-level





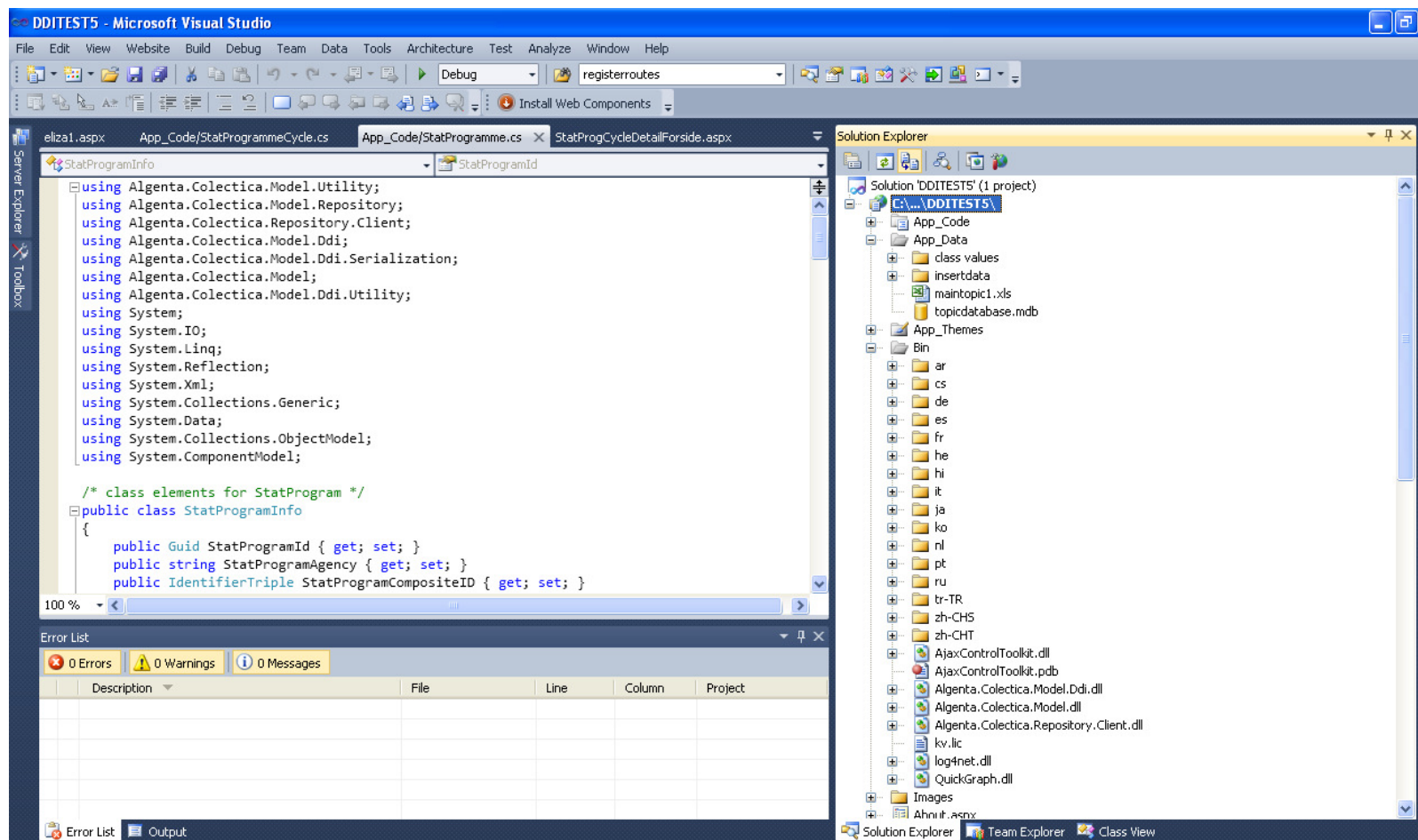
DDI – top-level

Top Level Elements

- DDIInstance
 - Top level wrapper for any DDI element
- Study Unit
 - Data set description with citation and sampling universe
 - Surveys, collections, data sets, samples, censuses, trials, experiments, etc.
- Resource packages for general reuse
 - Allows packaging of any maintainable item as a resource item
- Grouping of studies and longitudinal description
 - Informal, formal, mixed



SDK





SDK

