

Comparison of unemployment from the LFS with other data sources in Ireland

Dr. Edel Flannery
Central Statistics Office (CSO)
Ireland

Presentation at LFS Methodology Workshop
Copenhagen
May 2017

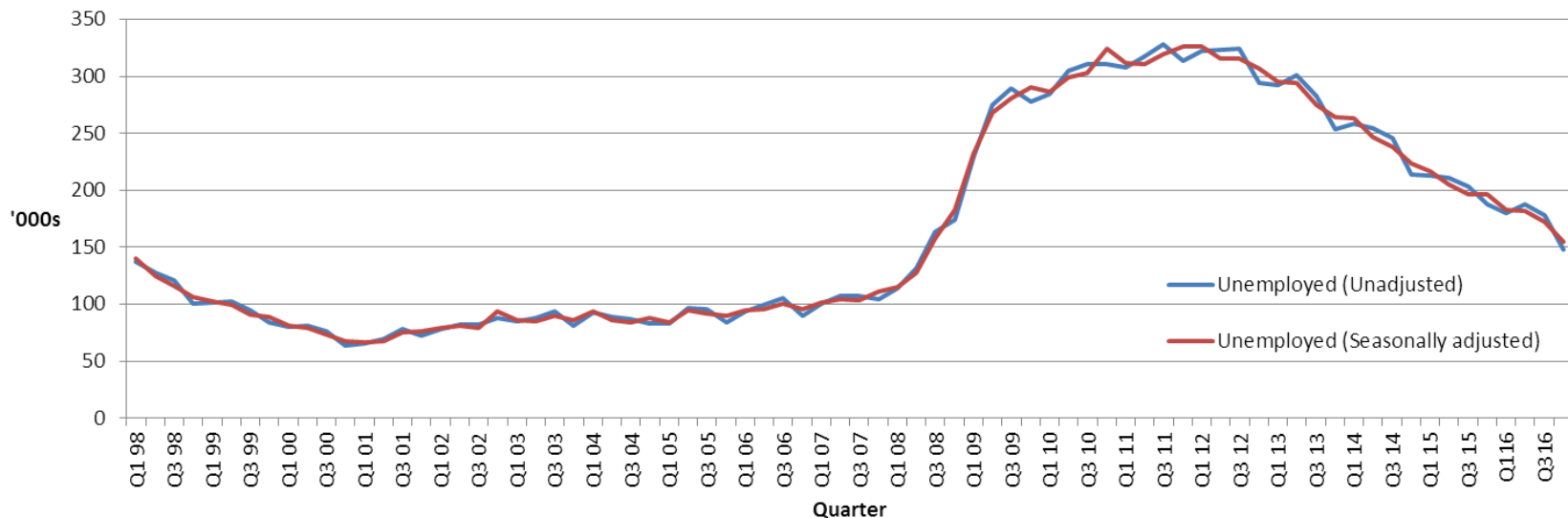


Labour Force Survey (LFS)

- Provides official measures of employment and unemployment in Ireland
- Published quarterly at T+51 days from the end of the final reference week
- Due to sampling and reliability constraints data is not released below NUTS3 (regional) level

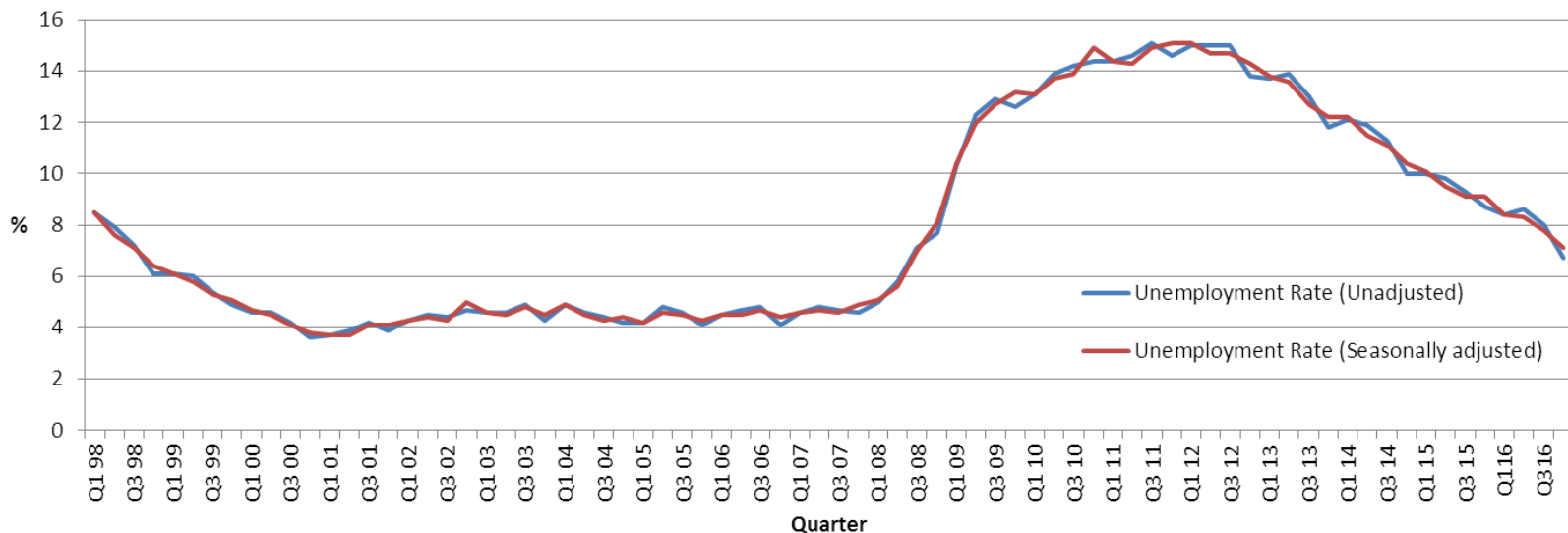
Labour Force Survey (LFS)

Number of persons aged 15-74 years unemployed in Ireland, Q1 1998 to Q4 2016



Labour Force Survey (LFS)

Unemployment rate for persons aged 15-74 years in Ireland, Q1 1998 to Q4 2016





Labour Force Survey (LFS)

User issues with the LFS in Ireland

- **Timeliness and periodicity:** The LFS is published quarterly at T+51 days following the end of the reference quarter but there is a strong demand from users to get data more regular (monthly rather than quarterly) and on a more timely basis.
- **Geographical Level:** The LFS does not publish data below NUTS3 level but there is a strong demand from users for data at a more detailed regional level.



Live Register (LR)

- Administrative count of the numbers of people aged less than 65 years who are registered for statutory entitlements
- Register is maintained by the Department of Social Protection (DSP)
- Published at detailed regional level including county level as well as local office level
- Published monthly



An Roinn Coimirce Sóisialaí
Department of Social Protection
Helping you build a better life

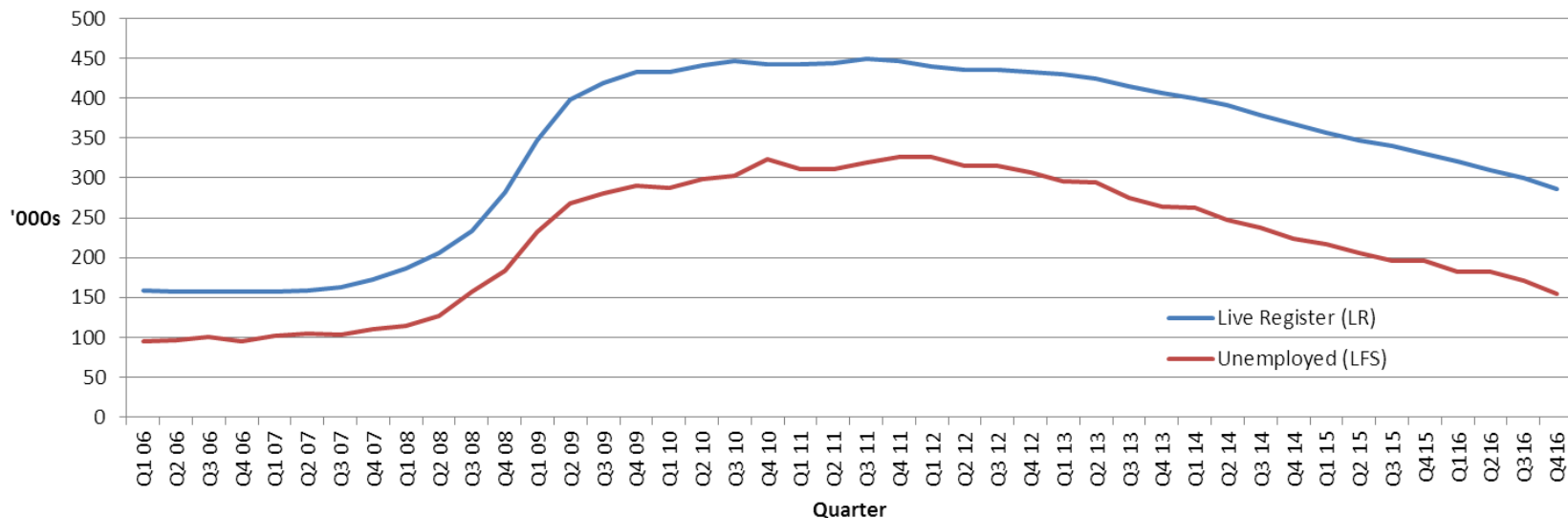


Live Register (LR) contd.

- Not designed to measure unemployment as it includes:
 - part-time workers (those who work up to three days a week)
 - seasonal and casual workers who are entitled to benefits

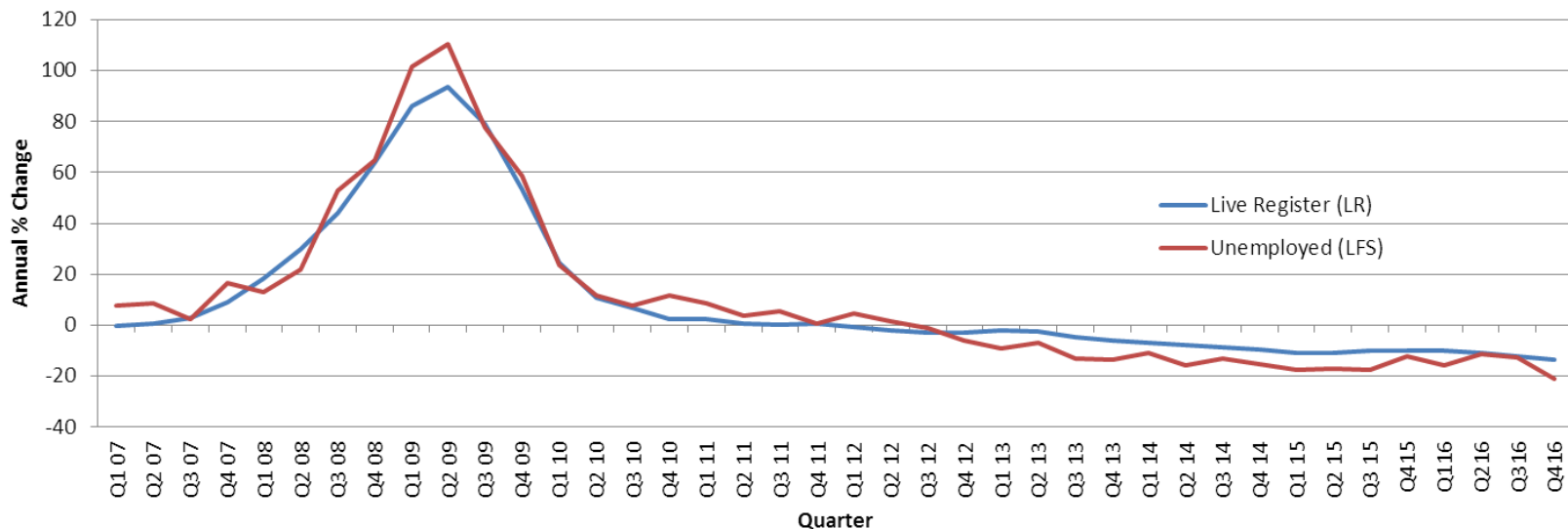
LFS Unemployed and LR Comparison

Number of unemployed persons aged 15-74 years (LFS) and number of persons aged less than 65 years on the Live Register (LR), Q1 2006 to Q4 2016 (Seasonally Adjusted)



LFS Unemployed and LR Comparison

Annual percentage change in the number of unemployed persons aged 15-74 years (LFS) and number of persons aged less than 65 years on the Live Register (LR), Q1 2007 to Q4 2016
(Seasonally Adjusted)





Live Register (LR) contd.

- Historically commentators have referred to the number of persons on the LR as the number of persons unemployed in Ireland.
Addressed through continual education of users
- There are two main reasons for this:
 - Lack of understanding of the difference between the official measure of unemployment from the LFS and the number of persons on the LR
 - Demand for more regular and/or more timely data on unemployment
Provided opportunity to create new Monthly Unemployment series



Monthly Unemployment (MU)

- Detailed series of monthly unemployment estimates
- Contains both volumes and rates of monthly unemployment for those aged 15 to 74 years
- Published monthly within a week following the last Thursday of the reference month
- State totals only – no regional breakdowns provided



Monthly Unemployment (MU) contd.

- Benchmark estimates provided by the LFS
- Proportional Denton method used to compile monthly data from quarterly benchmark estimates
- For months where the quarterly data is not yet available from the LFS, the ratio of the LFS monthly estimate to the LR monthly estimate (i.e. the benchmark to indicator ratio) is forecast forward in order to extrapolate a monthly LFS estimate
- Monthly series is revised when the latest quarterly LFS data becomes available



Monthly Unemployment (MU) contd.

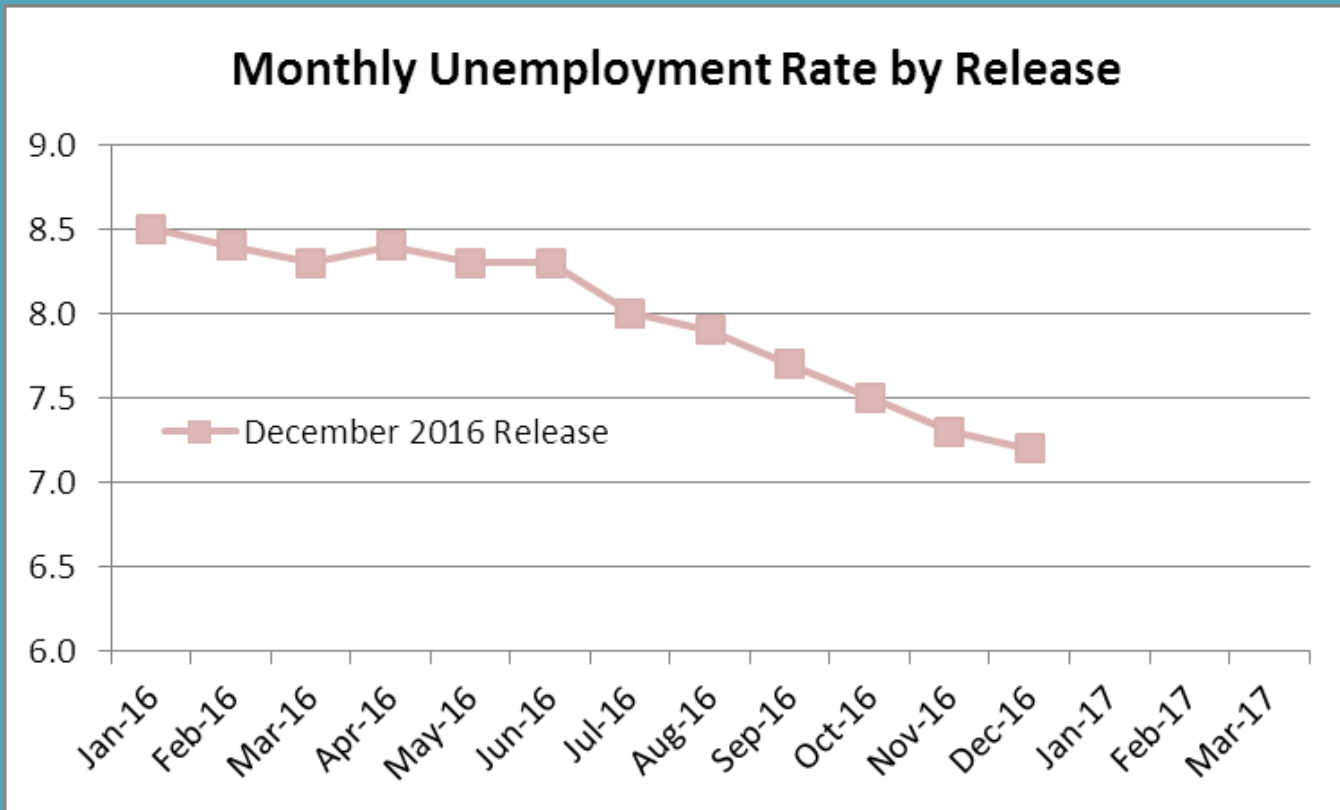
Note on Monthly Unemployment (MU) release:

- The data in this release are subject to revision, caused by updates to the seasonally adjusted series whenever new monthly data are added.
- In addition it should be noted that larger revisions can occur when the most recent LFS data are included in the calculation process.
- Revised figures will be produced upon the publication of each new set of benchmark figures from the LFS and these revisions will be included in the LFS release.



Monthly Unemployment (MU) contd.

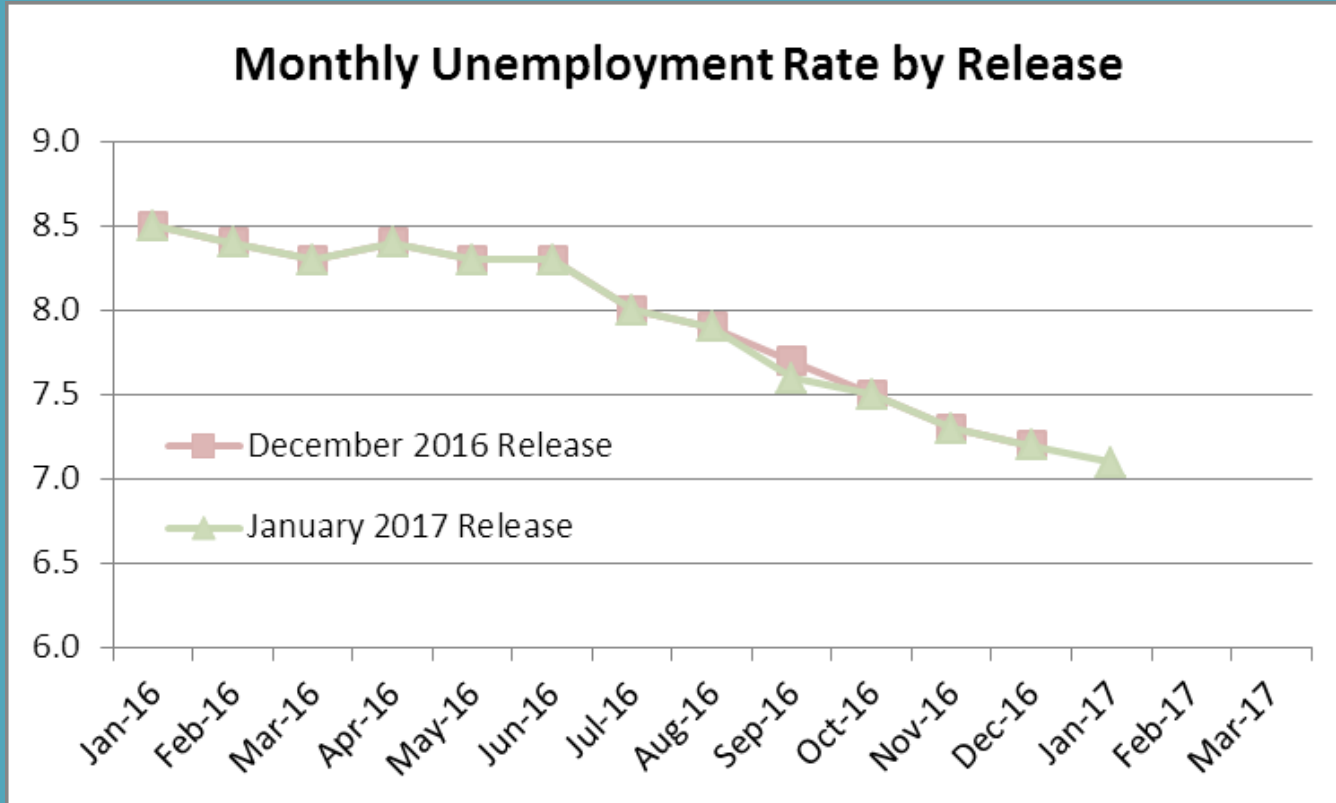
Revisions:





Monthly Unemployment (MU) contd.

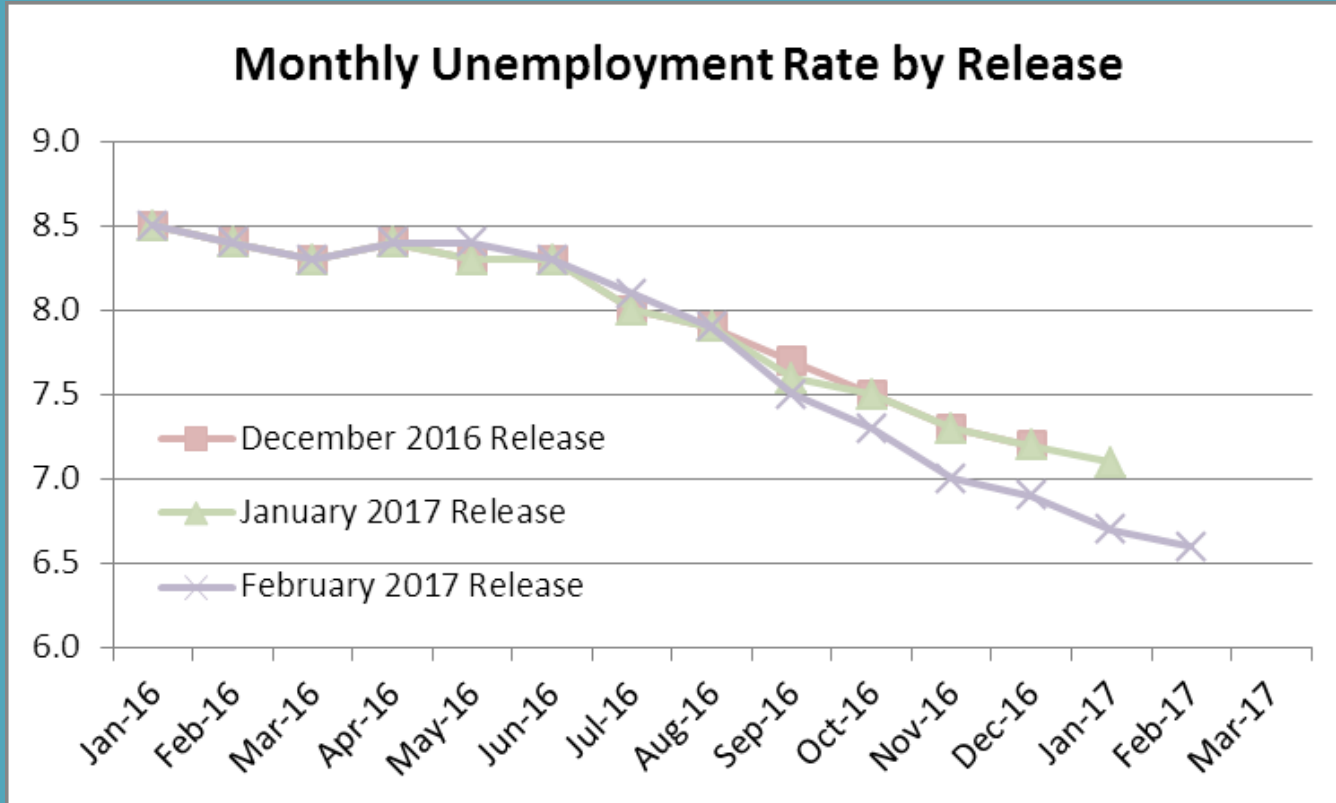
Revisions:





Monthly Unemployment (MU) contd.

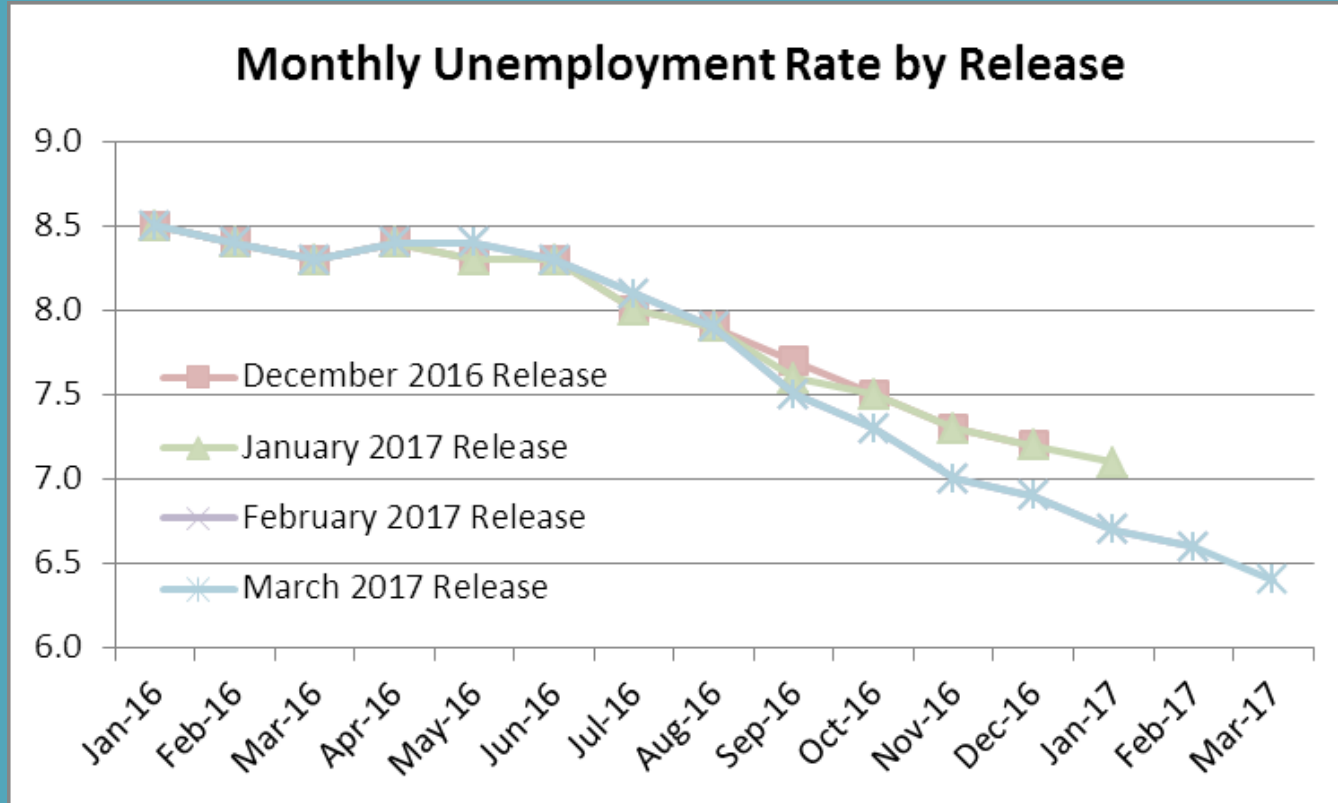
Revisions:





Monthly Unemployment (MU) contd.

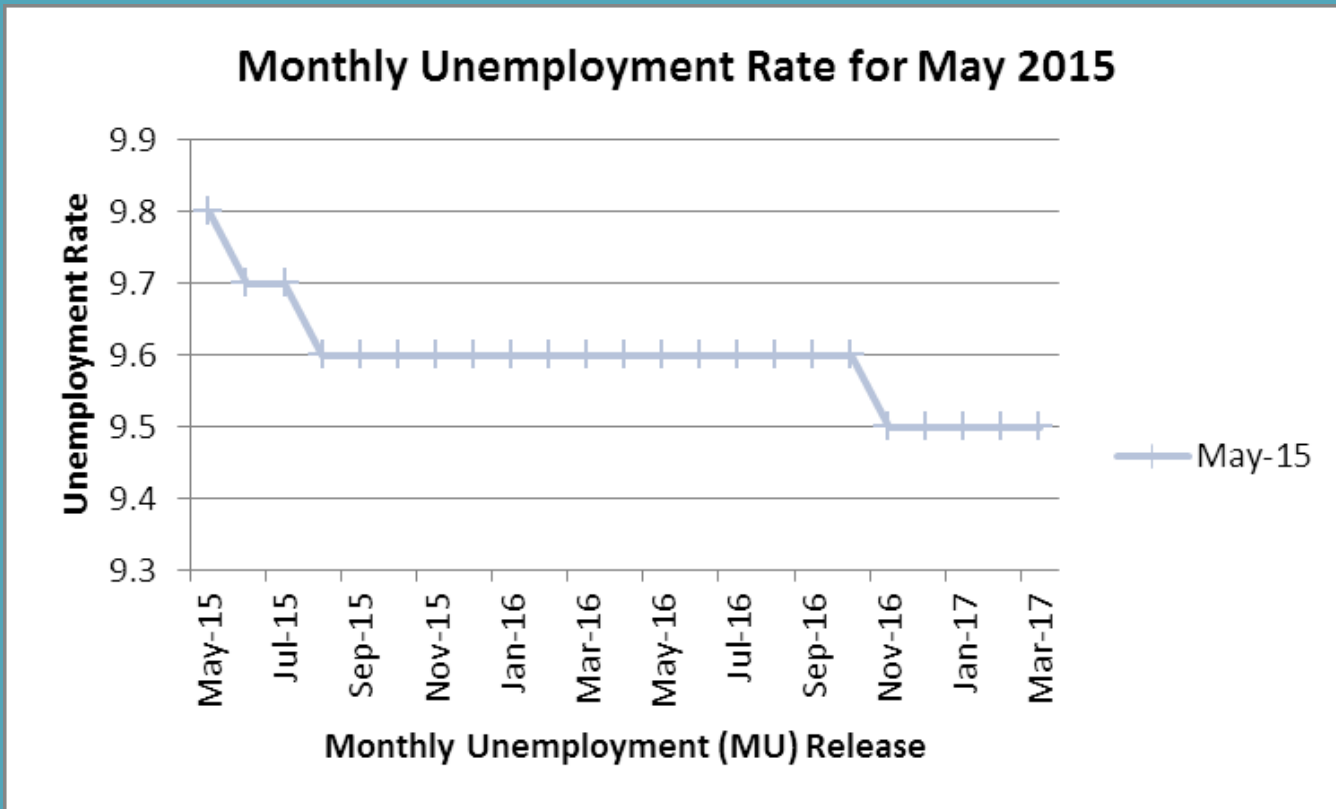
Revisions:





Monthly Unemployment (MU) contd.

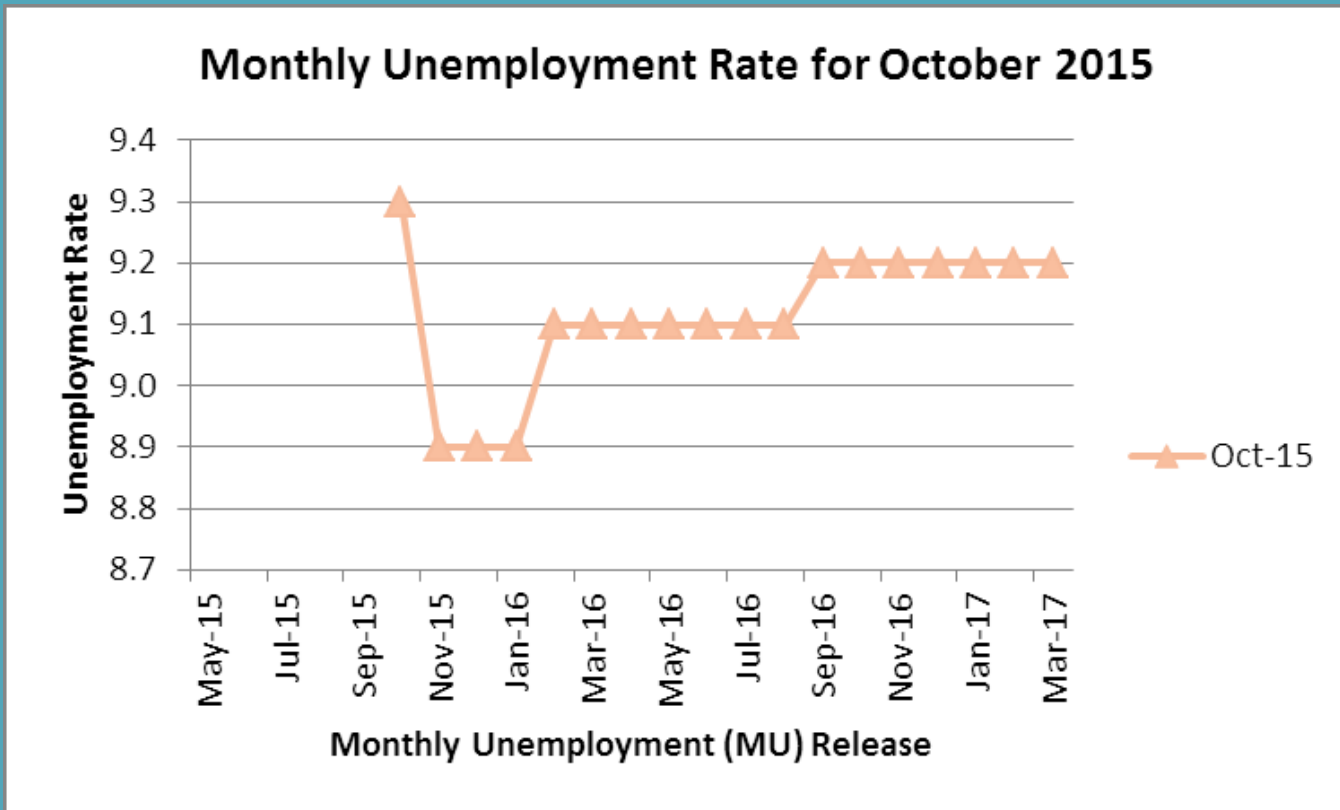
Revisions:





Monthly Unemployment (MU) contd.

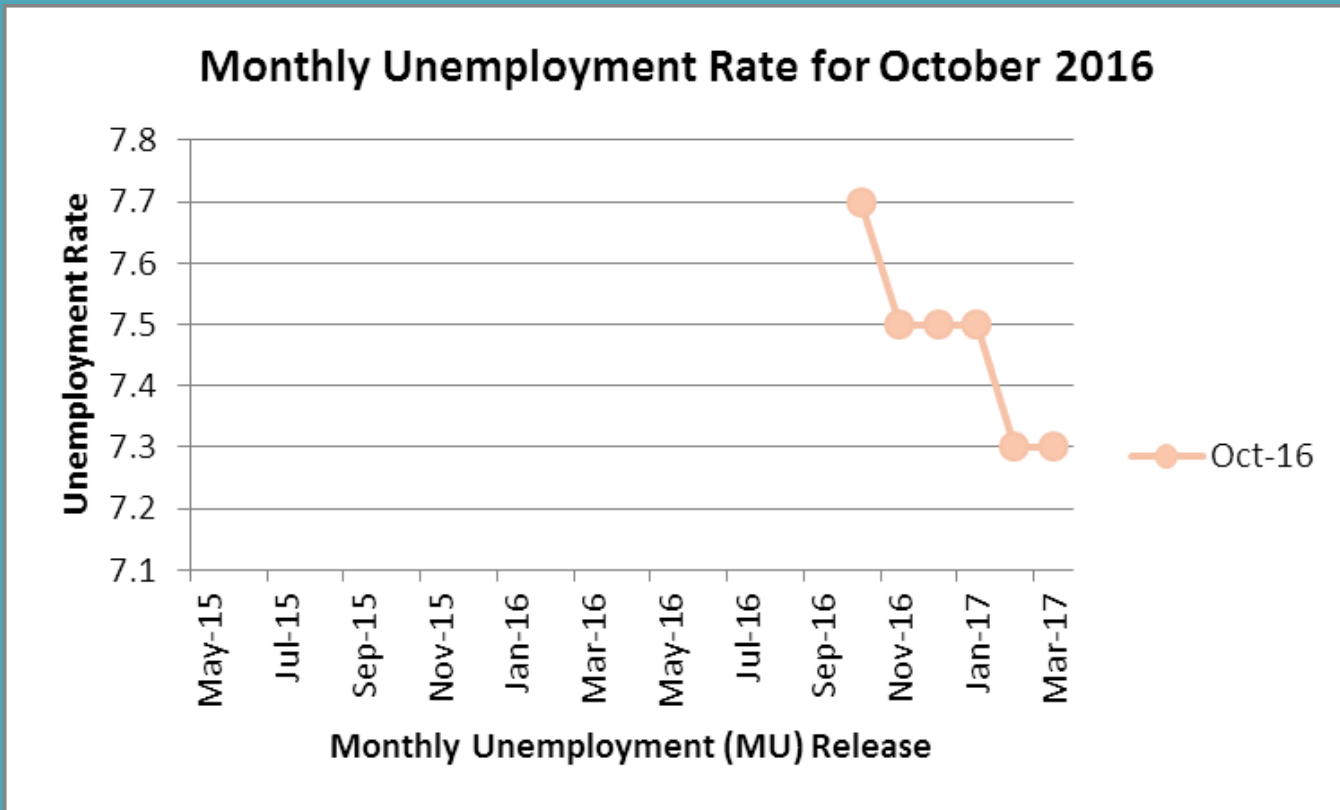
Revisions:





Monthly Unemployment (MU) contd.

Revisions:





Current and Future Work

- Development of thematic releases from LFS data
- Methodological and sampling changes will allow the CSO to use the actual monthly LFS data in the future to produce the estimates of monthly unemployment.
- Restructuring of the Social and Demographic Statistics Directorate; there is now a Division within it with responsibility for Labour Market and Earnings which will allow more focus on these themes.



Current and Future Work contd.

- User education through:
 - Responses to ad hoc queries
 - Communication at quarterly LFS press conference
 - Communication at quarterly briefing for government officials
 - Information note on Monthly Unemployment (MU) release
 - Conducting analysis to identify what differences exist between different CSO measures and explaining why those differences occur



Conclusions

While the Labour Force Survey (LFS) In Ireland provides users with a wealth of labour market data and indicators on a quarterly basis, users have some issues with the LFS:

- **Timeliness and periodicity**
- **Geographical Level**



Conclusions contd.

Timeliness and periodicity

- Addressed in part by the publication of the Monthly Unemployment (MU) release

Geographical Level

- CSO is currently investigating ways to publish labour market statistics at a more detailed regional level

Thank you

Questions?

A series of overlapping, wavy lines in shades of teal, blue, and light grey sweep across the bottom of the slide, creating a dynamic, flowing effect.