



NADABAS and its Environment

Report from a remote mission to the National Statistical Institute of Mozambique, Maputo Mozambique

8 March - 1 April 2011

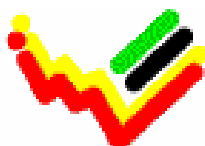
within the frame work of the

*AGREEMENT ON CONSULTING ON
INSTITUTIONAL CAPACITY BUILDING,
ECONOMIC STATISTICS AND RELATED AREAS*

between

INE and Scanstat

Søren Netterstrøm



Instituto Nacional de Estatística

Søren Netterstrøm
sne@viv.dk

Table of contents

| | |
|-------------------------------------|---|
| Executive summary in English | 1 |
| Resumo executivo em Português | 1 |
| Appendix A..... | 2 |
| Appendix B | 4 |

Executive summary in English

The purpose of this mission was to re-establish the NADABAS system that was lost due to a server failure and to implement procedures in order to avoid such a situation in the future.

To reach the goal communication with INE IT staff was established using the Team Viewer software. After inspection and discussions with INE IT staff and Scanstat long and short term consultants it was decided that the server should be reinstalled with MS Windows 2003 Server and MS SQL 2008. This was done by INE IT staff.

Despite this reinstallation the Nadabas system still refused to work and it was not until the rights management routines were verified and updated that the system became available again.

The INE IT staffs were very supporting during the whole process and this model of assisting from distance seems to have a big potential.

The staffs at the National Account have now verified the content of the database and are working to have it up to date as soon as possible.

The plan for backing up both data and the database that was set up in cooperation with the IT department last year has still to be verified. If carried out it should make it possible in the future for INE to re-establish the system in case of loss without any further assistance.

Resumo executivo em Português

O objectivo desta missão foi a de restabelecer o sistema NADABAS, que foi perdido devido a uma falha no servidor, e implementar procedimentos de modo a evitar tal situação no futuro.

Para alcançar o objectivo uma linha de comunicação com a equipe de TI do INE foi estabelecida usando o software TeamViewer. Após inspecção e discussões com a equipe de TI do INE e os consultores de longo e curto prazo do Scanstat foi decidido que o servidor deve ser reinstalado com MS Windows 2003 Server e MS SQL 2008. Este trabalho foi feito pela equipe de TI do INE.

Depois esta reinstalação o sistema Nadabas ainda se recusou a trabalhar, e não foi até as rotinas de gerenciamento de direitos foram verificadas e actualizadas que o sistema se tornou disponível novamente.

A cooperação com o pessoal do INE funcionou bem durante todo o processo e este modelo de assistência de longa distância parece ter um grande potencial.

A equipa na Contas Nacionais já está verificando o conteúdo do banco de dados trabalhando para tê-lo até à data o mais cedo possível.

O plano para fazer backup dos dados e o banco de dados que foi criado em colaboração com o departamento de TI no ano passado ainda não foi verificada. Se realizada, deve tornar possível no futuro para INE para restabelecer o sistema em caso de perda, sem qualquer assistência.



INSTITUTO NACIONAL DE ESTATÍSTICA
DIRECÇÃO DAS CONTAS NACIONAIS E INDICADORES GLOBAIS

Appendix A

March 08, 2011

TERMS OF REFERENCE

For a Short-term Distance Assistance on NADABAS and its Environment

8 – 31 March, 2011

within the

AGREEMENT ON CONSULTING IN INSTITUTIONAL CAPACITY BUILDING, ECONOMIC STATISTICS AND RELATED AREAS BETWEEN INE AND SCANSTAT.

Consultants: Jesper Ellemose Jensen, Niels Poulin, Søren Netterstrøm

Counterparts: Salomão Muianga, Monica Magaua

1. Background

In the on-going rebasing and revision of the national accounts the IT-solution has been improved by integrating the database software Microsoft SQL Server Express in the system.

2. Main Reasons for the Mission

The application NADABAS (National Accounts Database System) do not work since beginning of January. The SQL part has been set up on another server and help is now needed to make it all work again.

3. Beneficiaries of the Mission

The mission will primarily benefit the staff at the National Accounts Department and, besides, selected staff at the IT-Department by providing knowledge of the software (NADABAS) for national accounts compilation. The beneficiaries in the long run will be the users of NA through improved regularity, timeliness and contents quality of the National Accounts.

4. Objectives of the Mission

Secure, adjust and modify the system in co-operation with the IT staff and the national accounts staff.

5. Expected Results

An adjusted version of NADABAS, running within its dedicated secure and stable environment.

6. Work to be carried out by the Consultants

See point 4 above. The work will be done through Remote Desktop.

7. Agenda for the Mission

Remote working sessions, sometimes with INE IT staff.

8. Tasks to be done by INE to facilitate the Mission

- Elaborate the Terms of Reference for the mission
- Prepare and supply the consultant with necessary documents and information
- Arrange meetings with key persons
- Supply good working conditions for the consultant

9. Timing of the mission

The work starts immediately and should be concluded as soon as possible. The consultants might use up to 40 hours of work. If more is time will be needed INE will be noted in advance.

10. Source of Funding

Project: MPD008-04-MPD-2008-0013 – Contas Nacionais
PAAO11 – 1.3.1 Contas Nacionais Anuais, Trimestrais e Provinciais

11. Report

The consultant will prepare a short draft Technical Report. A final draft will be submitted to INE for final comments within one week of the end of the mission.

Approved by Saide Dade INE/DCNIG

Day / /

Confirmed by Tomás Bernardo INE/DICRE

Day / /

Confirmed by Luis Mungamba, Contract Manager for the INE – Scanstat Contract

Day / /

NADABAS – Installation at INE

Version 2011-03-15 R

This guide describes how NADABAS is installed at INE.

The Server

All the spread sheets and documents that make up the NADABAS system reside on a common server (NADABAS1).

On this server, in the Root Folder, is **ContasNacionais** with subfolder **ContasNacionais**.

For the system to work properly, on each computer used, the folder **ContasNacionais/ContasNacionais** (located on **NADABAS1**) in the network, must be assigned to the drive letter V.

V: = //NADABAS1/ContasNacionais/ContasNacionais

So in “My Computer”, you should be able to see Drive V, and when opening get the base folder of ContasNacionais, which is a list of the folders below this level (CN2003, CN2009 etc.).

ContasNacionais has the subfolders CN2003 and CN2009. These are the base for all data files, all the Excel sheets that make up the national account (distributed in different folders, Fontes, Produtos etc) for CN2003 and CN2009 respectively.

All of this is needed for the menu system in NADABAS to work properly, as the database in a table of workbooks keeps their name relative to the base directory, that is set to V:\CN2003 (or for 2009 to V:\CN2009)

The SQL database

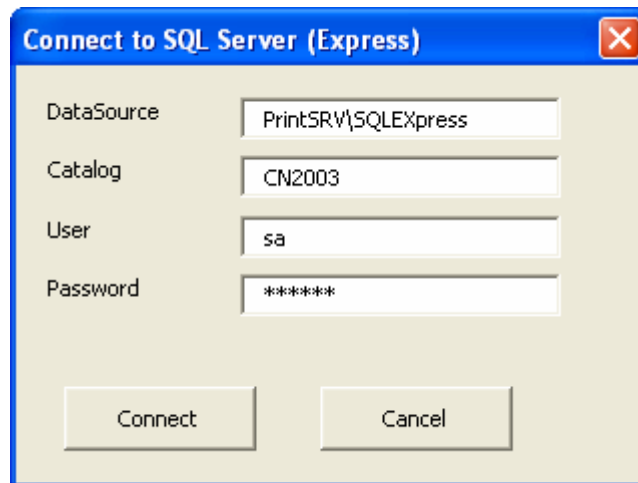
NADABAS also has a database part. At INE there are two such databases, CN2003 and CN2009.

They are located at the NADABAS server, but could be located on any server in the system.

Each database has a user account name **sa** with password *********. This is an account set up as system administrator, so it can create alter and delete tables, views and rows. All users of NADABAS are using this common account, as it makes the administration simpler (easier to add a new user).

Within NADABAS the user ID from Windows logon is then used to control rights (access to certain spread sheets etc.), but that is internal to the NADABAS add in software.

First time NADABAS is started on a new machine, you must select type of database (.mdb or SQL-SERVER), and then logon to the SQL_SERVER DB as below



Password is: *****

Note DataSource is ServerName\SQLEXPRESS. So it is likely to be NADABAS1\SQLEXPRESS or where the database is located.

Note. UpperCase/Lowercase matters for User and Password

Nadabas saves information about the database in the registry

(Computer\HKEY_CURRENT_USER\Software\VB and VBA program settings\NADABAS)

Next time the user logs on, this database is automatically selected.

Multiple databases

Nadabas has the option, that a user may use two or more databases. Each time the system is initiated, the user is then asked to select the current database.

In the NADABAS menu, the items Nadabas\Change Database\Administer Multiple Databases

Gives the option to connect another database, setting up a list of databases, from which the user can chose.

So far, it is only a limited set of users that should have access to both databases.

Password needed

To change database or to get right to administer multiple databases, you may need a special password.

This password is: *****