

User-friendly presentation of statistics:

Graphs

Jan Erik Kristiansen

Senior adviser

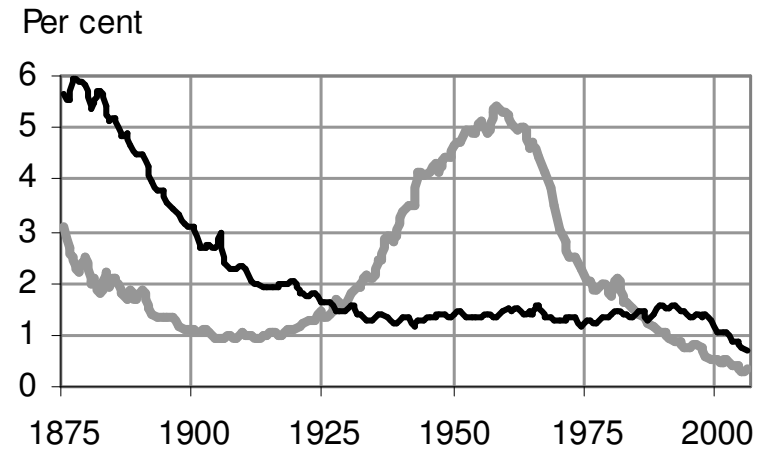
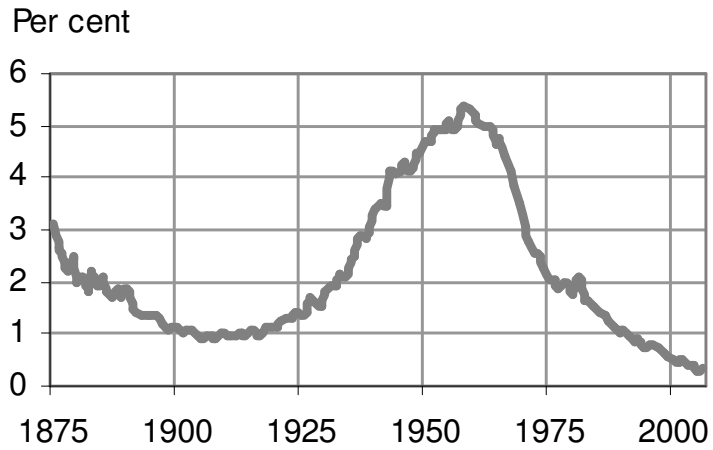
Statistics Norway

From tables to graphs:

Why?

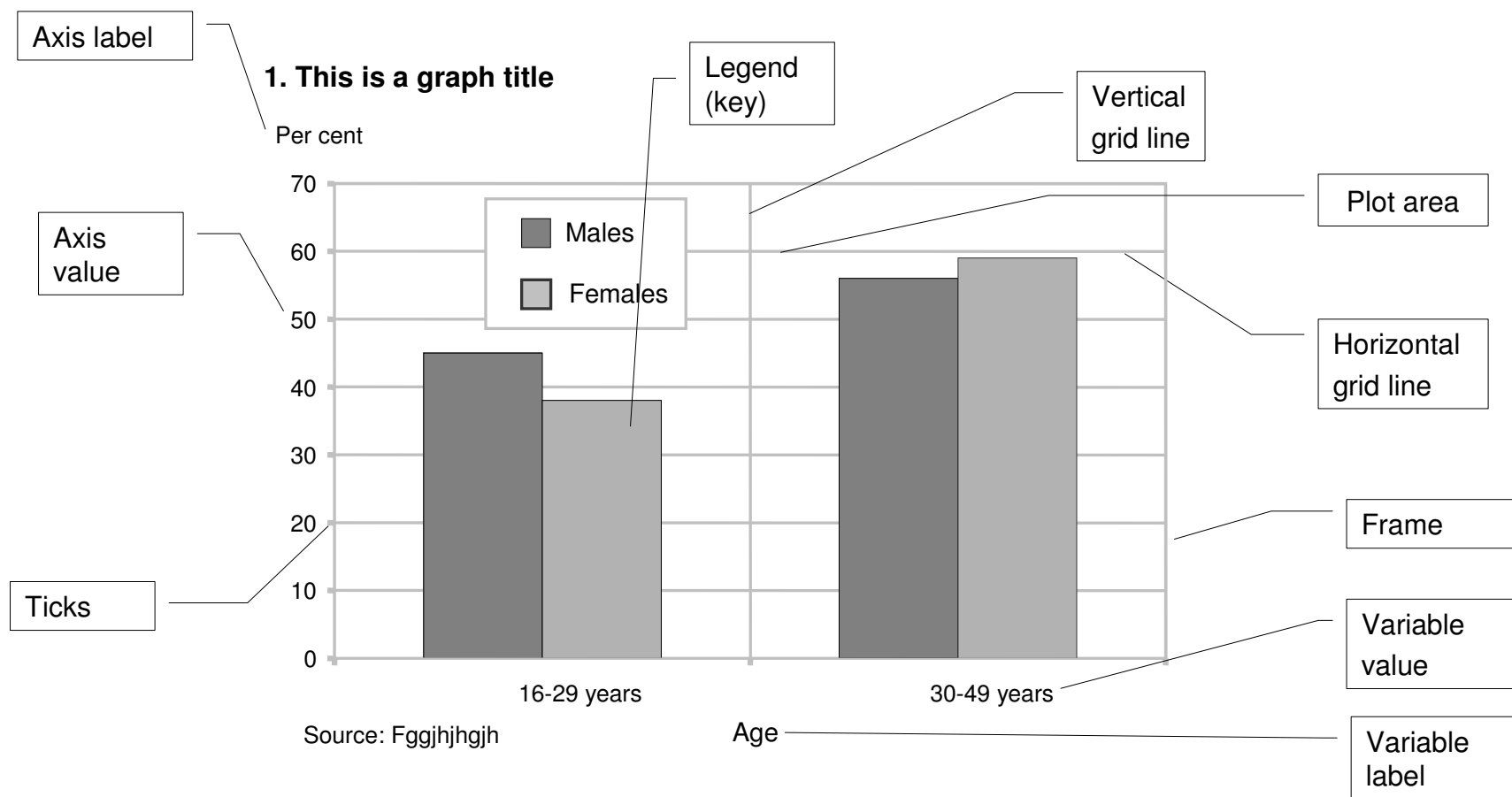
Per cent girls given the first name *Anne* each year

Year:	Pct.:	Year:	Pct.:	Year:	Pct.:	Year:	Pct.:	Year:	Pct.:	Year:	Pct.:
1875	3,11	1897	1,17	1919	1,12	1941	3,52	1963	4,99	1985	1,39
1876	2,67	1898	1,10	1920	1,16	1942	3,47	1964	4,63	1986	1,36
1877	2,53	1899	1,13	1921	1,24	1943	4,14	1965	4,74	1987	1,23
1878	2,20	1900	1,11	1922	1,31	1944	4,06	1966	4,44	1988	1,14
1879	2,48	1901	1,03	1923	1,31	1945	4,15	1967	4,16	1989	1,03
1880	1,97	1902	1,09	1924	1,43	1946	4,29	1968	3,83	1990	1,05
1881	2,07	1903	1,05	1925	1,36	1947	4,13	1969	3,49	1991	0,96
1882	1,80	1904	0,96	1926	1,41	1948	4,41	1970	3,05	1992	0,85
1883	2,22	1905	0,93	1927	1,70	1949	4,45	1971	2,77	1993	0,88
1884	1,95	1906	0,94	1928	1,61	1950	4,68	1972	2,52	1994	0,76
1885	2,12	1907	0,97	1929	1,55	1951	4,72	1973	2,49	1995	0,78
1886	1,82	1908	0,91	1930	1,81	1952	4,95	1974	2,29	1996	0,81
1887	1,70	1909	1,04	1931	1,91	1953	4,95	1975	2,06	1997	0,73
1888	1,84	1910	0,99	1932	1,95	1954	4,90	1976	2,04	1998	0,61
1889	1,70	1911	0,97	1933	2,16	1955	5,12	1977	1,88	1999	0,54
1890	1,85	1912	0,94	1934	2,10	1956	4,91	1978	1,99	2000	0,52
1891	1,50	1913	1,01	1935	2,42	1957	5,30	1979	1,94	2001	0,45
1892	1,39	1914	0,98	1936	2,47	1958	5,40	1980	1,77	2002	0,51
1893	1,36	1915	1,06	1937	2,91	1959	5,33	1981	2,07	2003	0,42
1894	1,36	1916	1,01	1938	2,81	1960	5,23	1982	1,66	2004	0,38
1895	1,36	1917	0,98	1939	2,93	1961	5,04	1983	1,65	2005	0,29
1896	1,36	1918	1,13	1940	3,40	1962	4,97	1984	1,53	2006	0,36



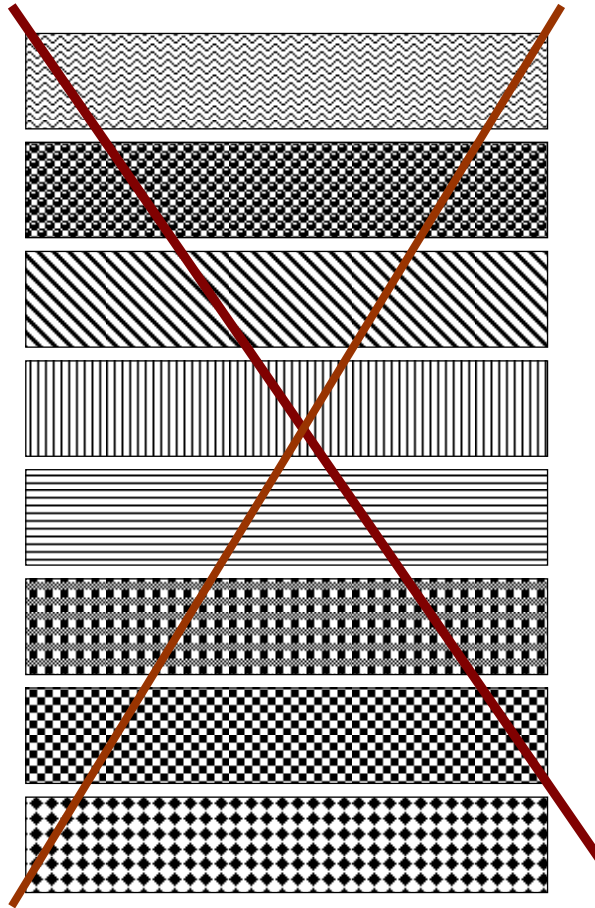
Charts speak directly to the eye!

Elements of a graph:



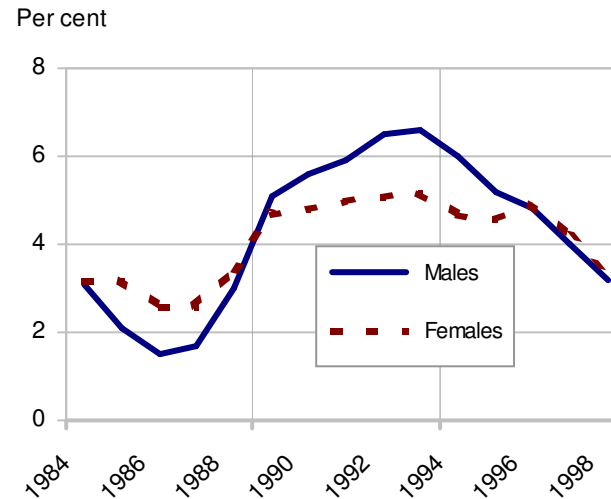
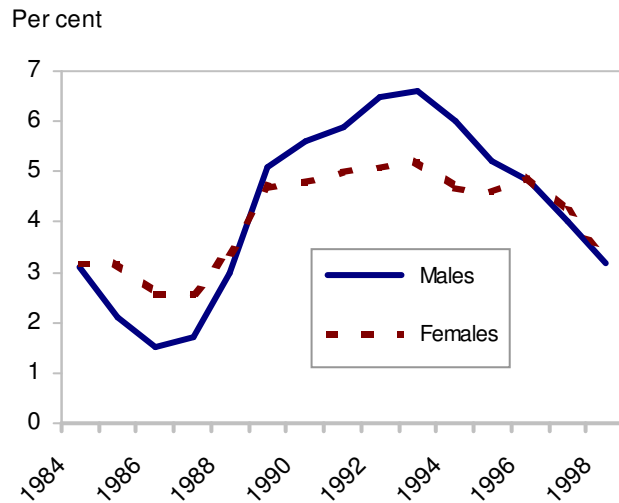
Graphs: Issues and solutions

- Use of patterns

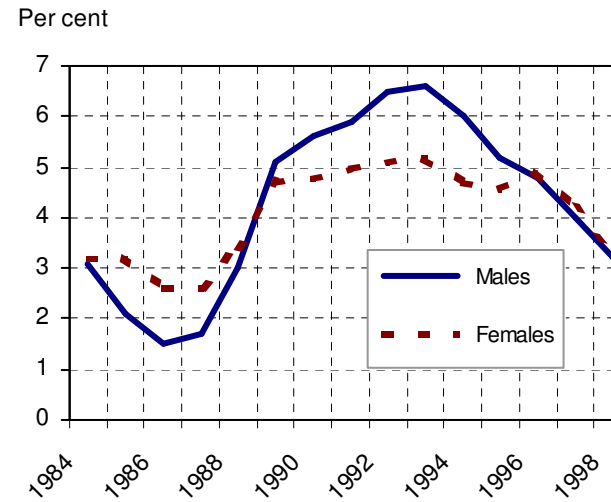
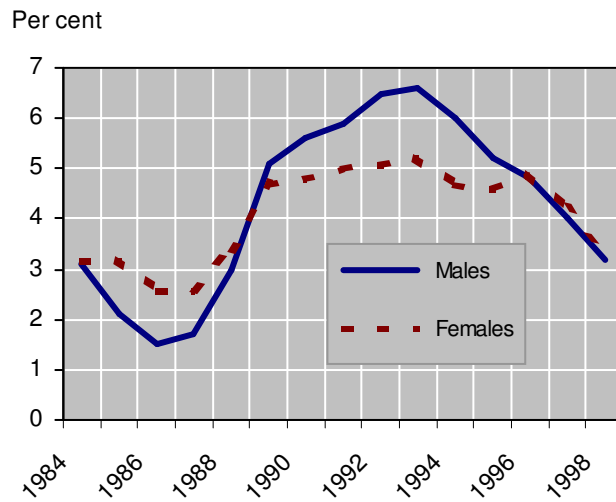
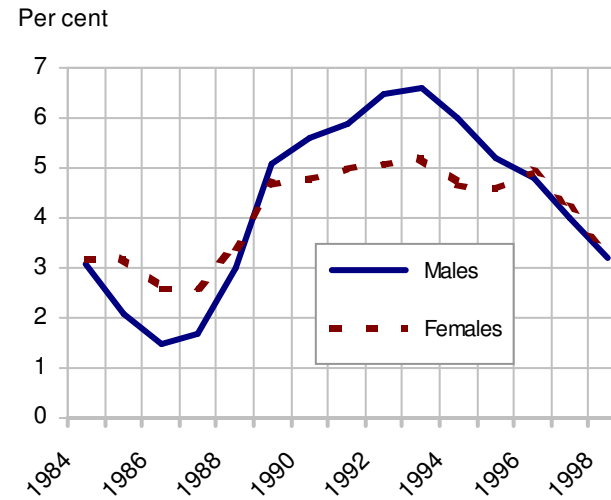
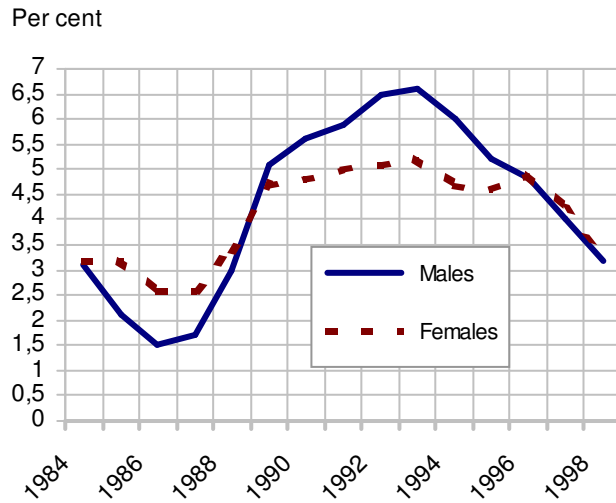


Graphs: Issues and solutions (cont.)

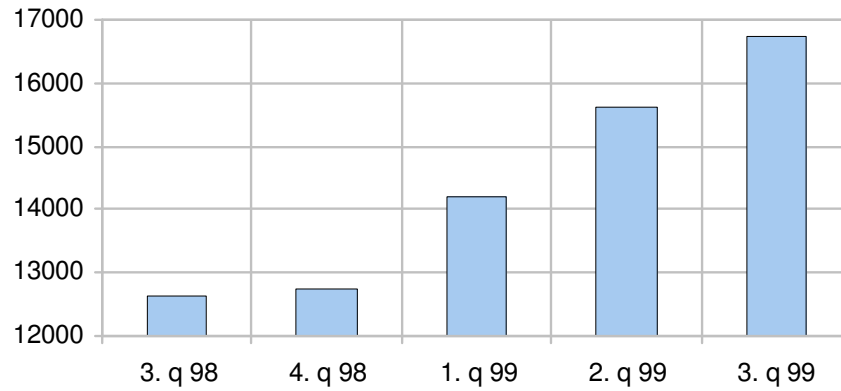
- Use gridlines to improve readability
- But how many?



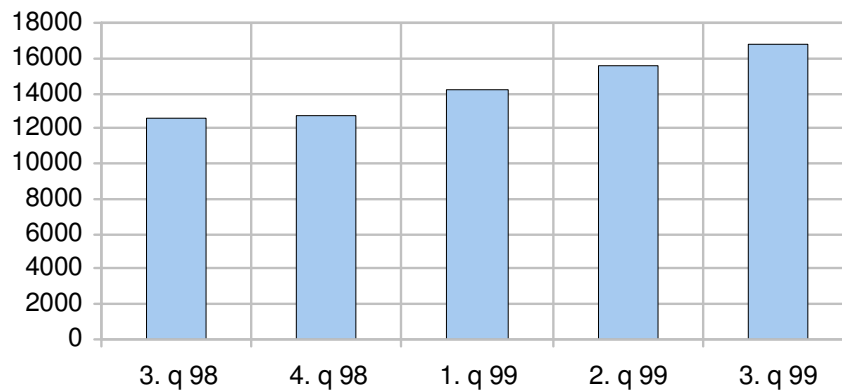
- Use of gridlines (cont.):



How to lie with graphs

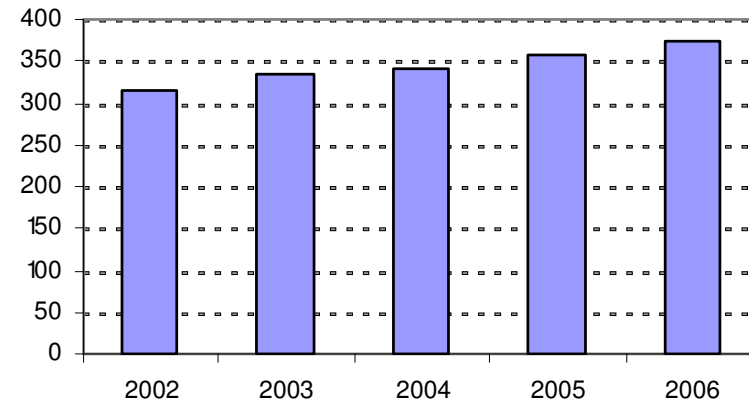
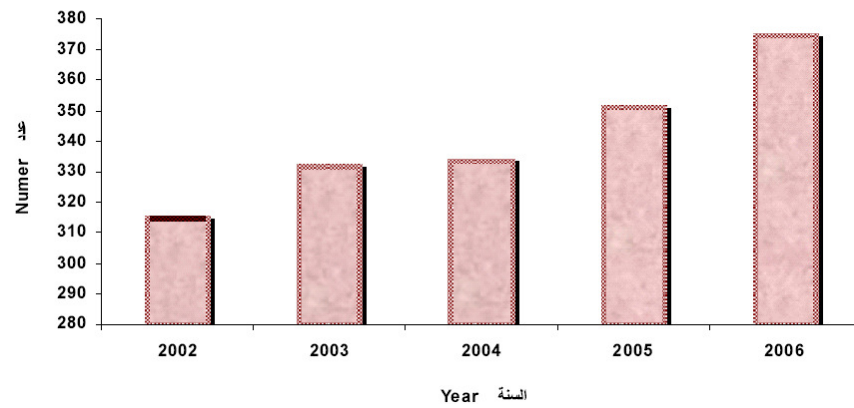


- Increase of 600 % ?!



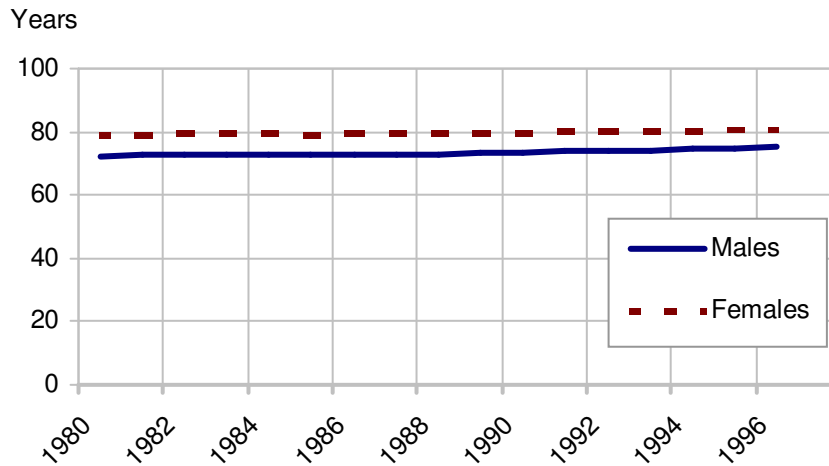
- No, only 35%!

Number of Hospitals عدد المستشفيات

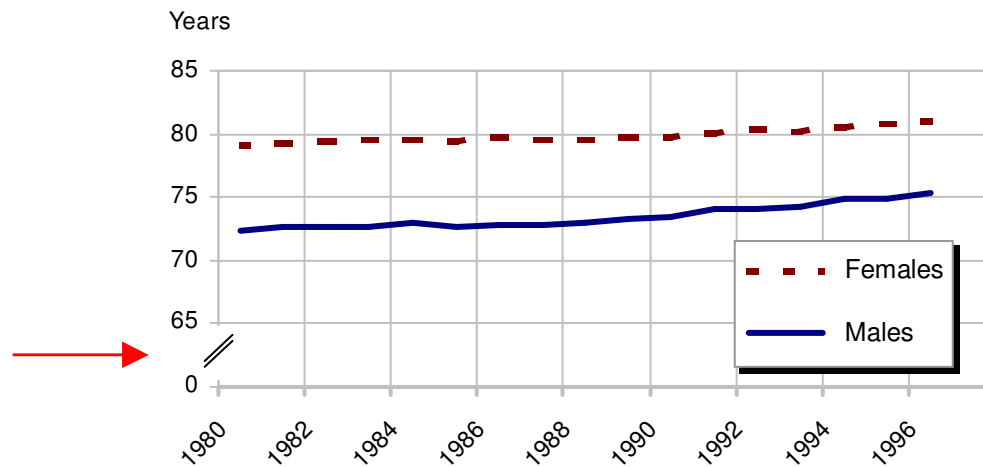


From: Sudan in Figures 2006

But:

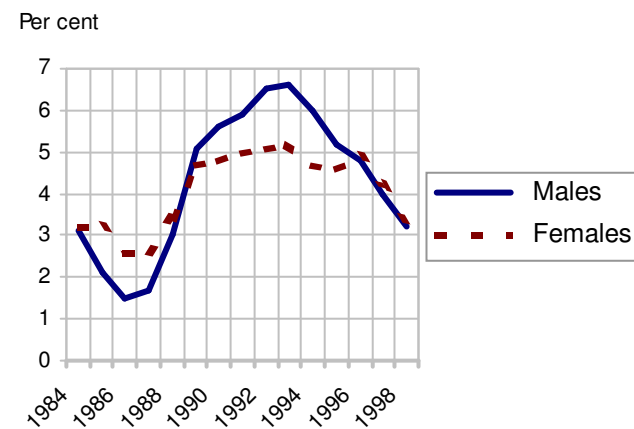
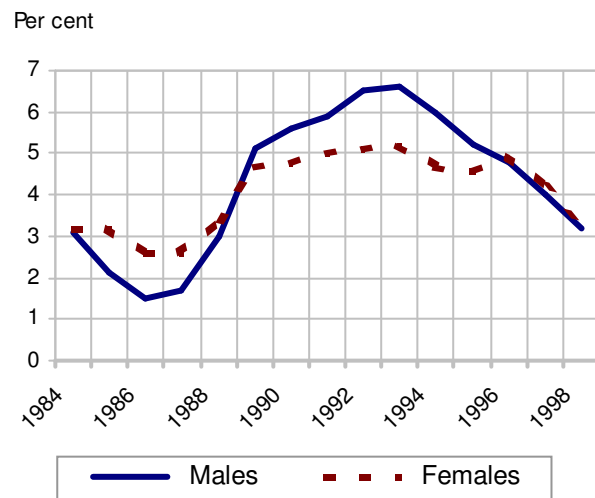


- When you compare groups...

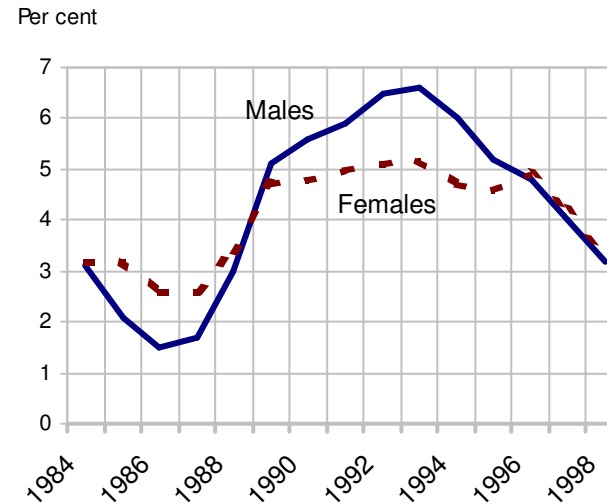
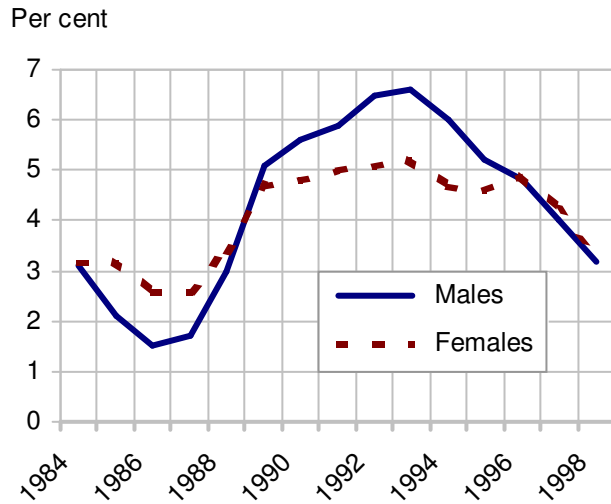


Graphs: Issues and solutions

- Legend: Where to place it?



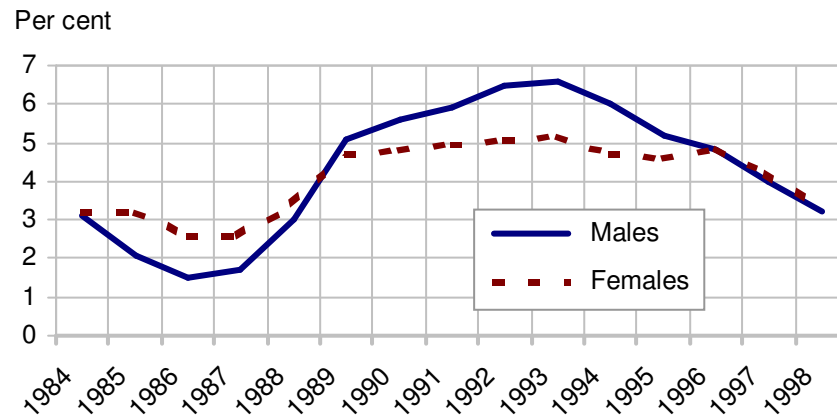
- Legend: Where to place it? (cont.)



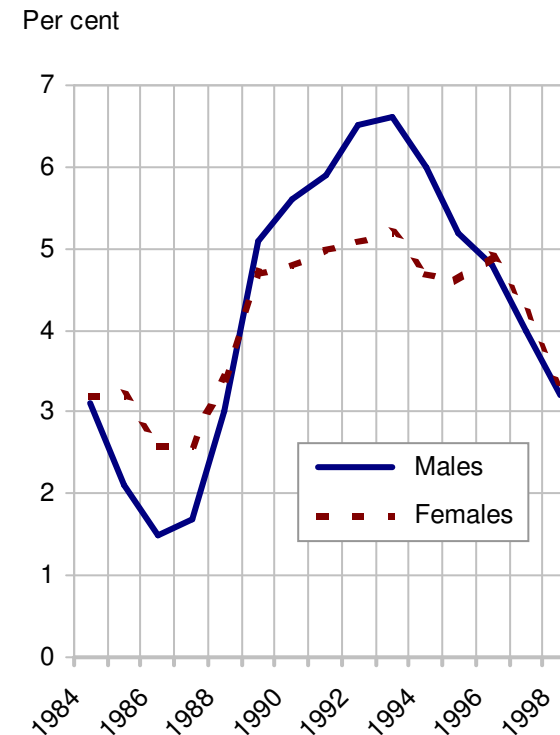
Best solution!

Graphs: Issues and solutions (cont.)

- Format/proportions

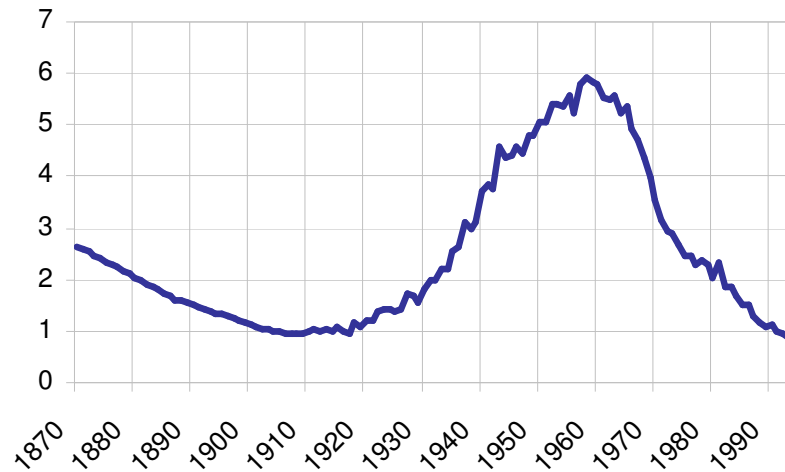


Landscape



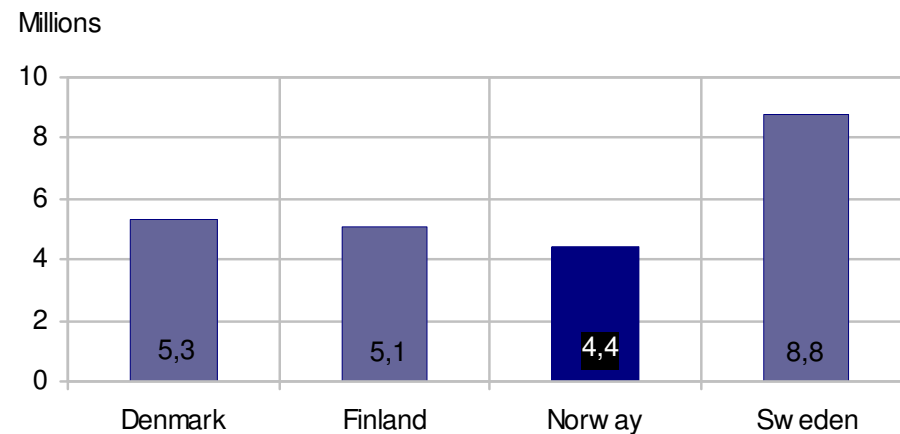
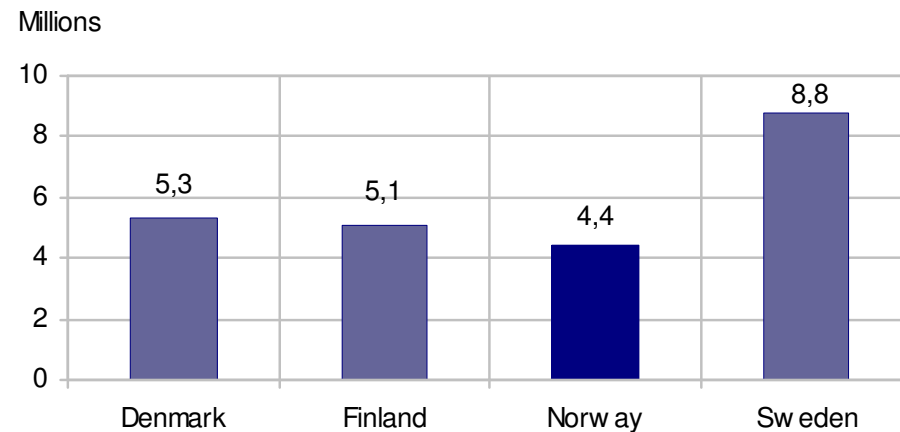
Portrait

- Format/proportions
 - The most usual format is probably landscape; width x height = ca. 1.5 x 1



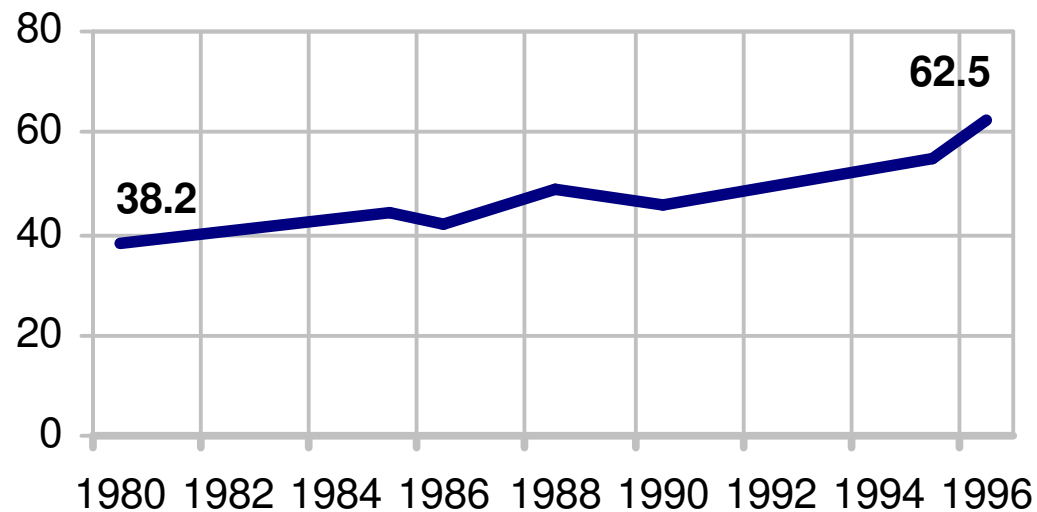
Graphs: Issues and solutions (cont.)

- Should values be given in the graph?



Graphs: Issues and solutions (cont.)

- In line charts, it is often useful to give the first and the latest value:



Main types of graphs:

- Bar charts (vertical)
 - Grouped
 - Stacked
- Bar charts (horizontal)
 - Grouped & stacked
- Line charts + area charts
- Pie charts
- Other types/ combinations

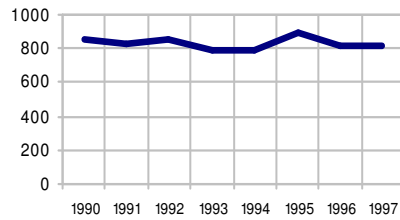
Which type of graph to use?:

Number of adopted children 1990-1997

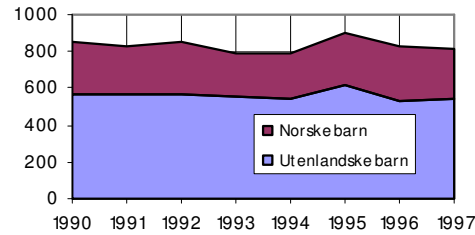
	Total				Norwegian			Foreign		
	Total	Under 3 years	3 - 11 years	12 years and over	Total	Boys	Girls	Total	Boys	Girls
1990	855	397	303	155	283	137	146	572	309	263
1991	833	418	263	152	271	131	140	562	309	253
1992	851	442	251	158	279	149	130	572	284	287
1993	786	397	246	143	236	125	111	550	312	238
1994	788	426	231	131	239	115	124	549	273	276
1995	898	490	257	151	284	141	143	614	272	342
1996	822	418	206	198	295	134	161	527	240	287
1997	814	469	189	156	272	126	146	542	244	298

Possible charts from the above table:

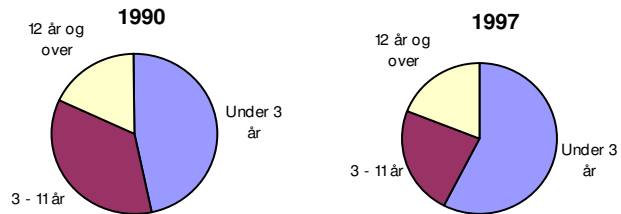
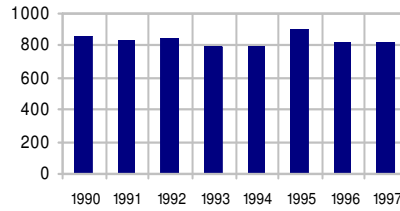
No. of adopted children 1990-1997



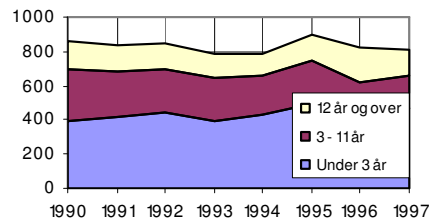
No. of adopted children. Norwegian and foreign 1990-1997



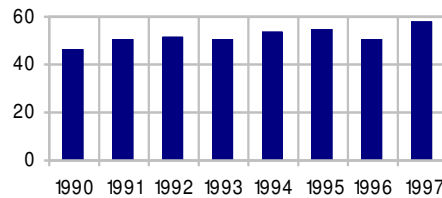
No. of adopted children 1990-1997



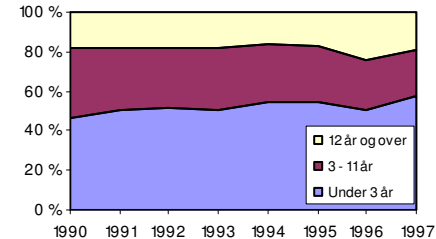
No. of adopted children by age 1990-1997



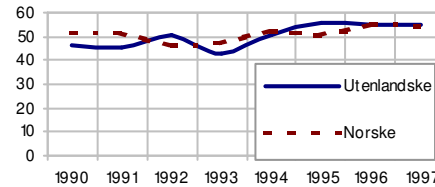
Adopted children. Percentage under the age of 3. 1990-1997



Adopted children by age 1990-1997

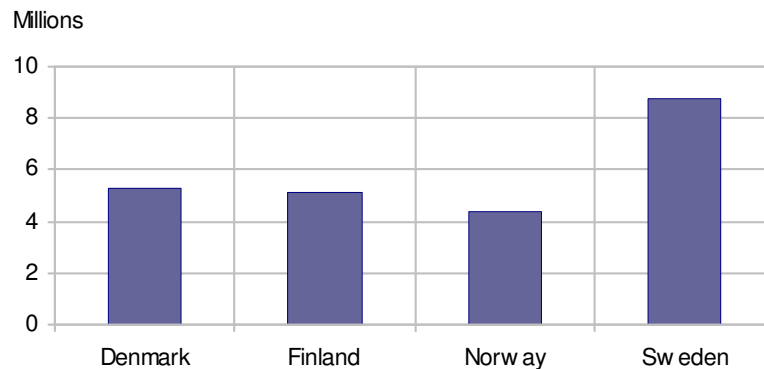


Adopted children. Percentage girls.

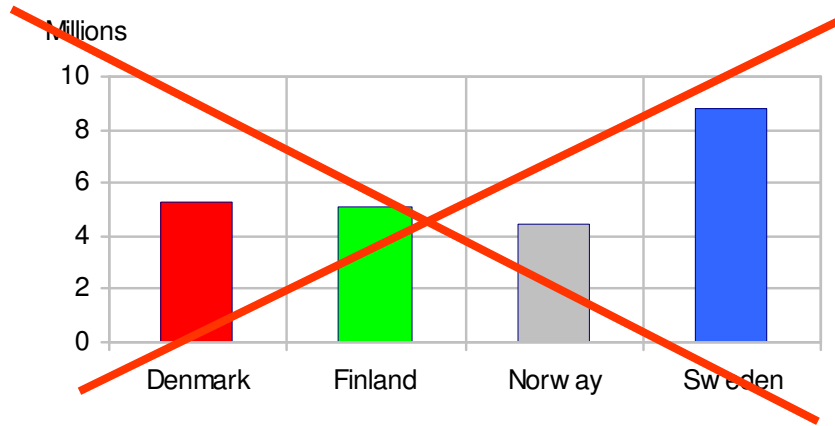


Bar charts (vertical):

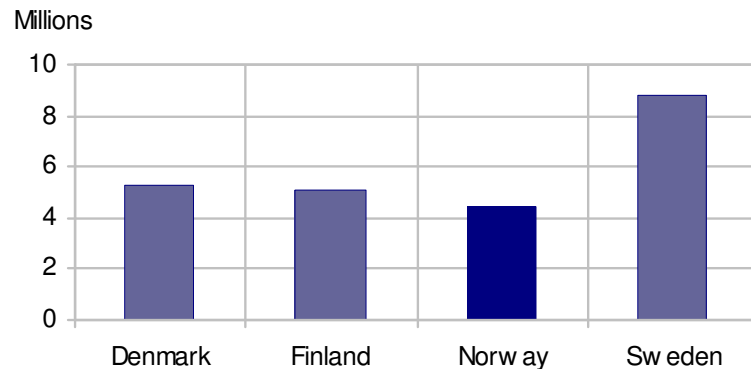
- Also called: Column charts
- The simplest and most basic chart type
- Used to show absolute or relative frequencies, percentages, averages
- Example: *Population in the Nordic countries*



Bar charts (vertical) (cont.):

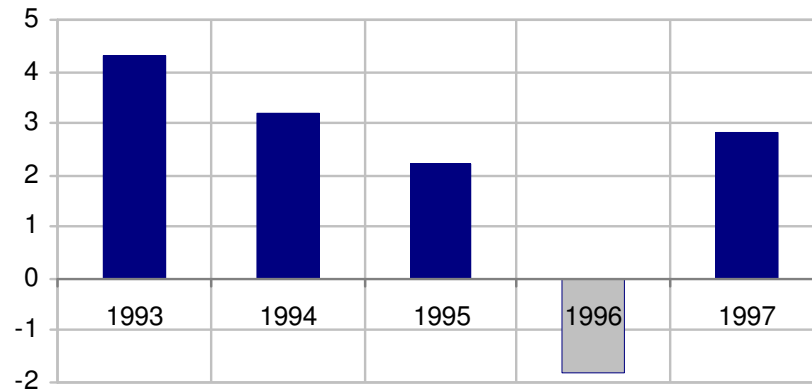


- With only one classification variable it is best to use only one colour/pattern



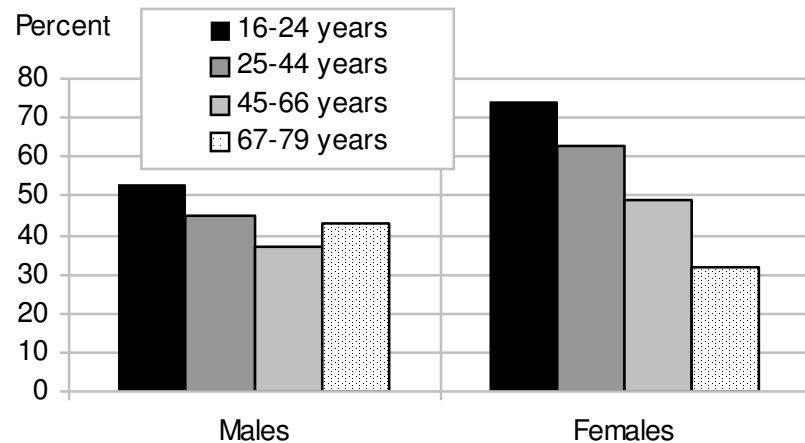
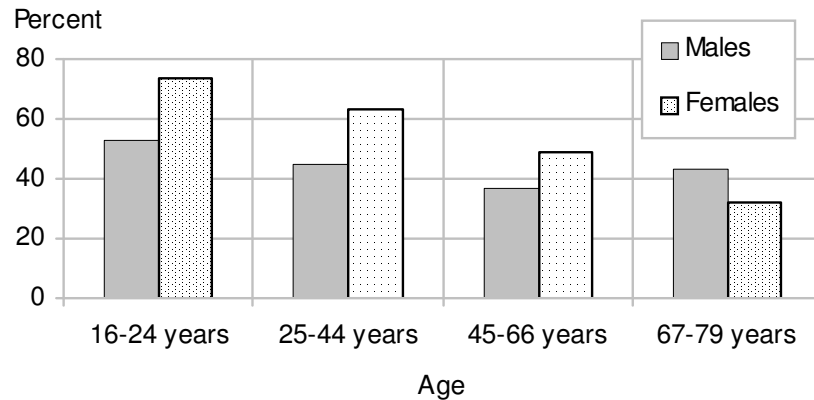
- If you want to focus on one class/group, this can be done by using a different colour/pattern

Bar charts (vertical) (cont.):



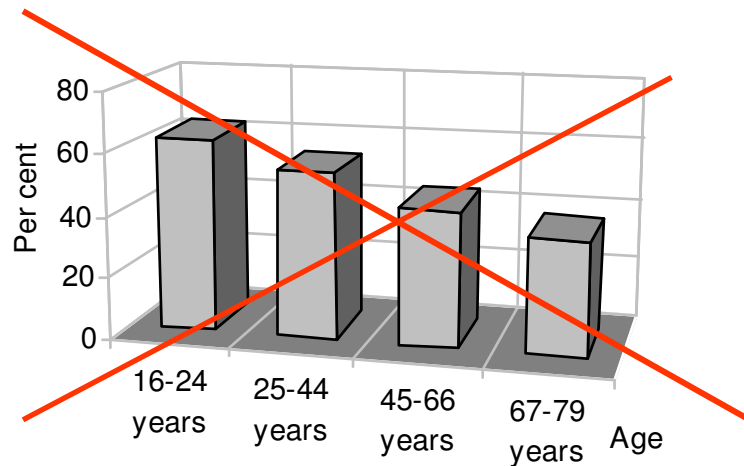
- When both positive and negative values are plotted, use different colours/ patterns

Grouped bar charts:

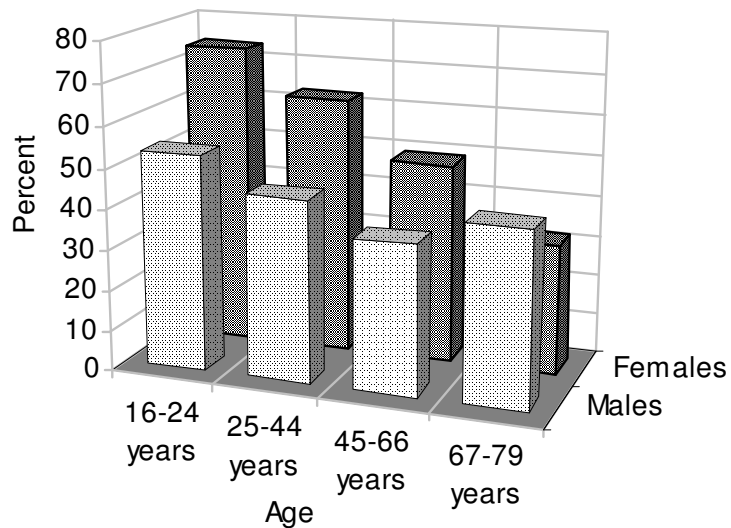


- Two (or more) categories
Example: *Percent using a library last year, by sex and age*
- With two categories, we have two ways of grouping, inviting to different comparison

“3D” bar charts:

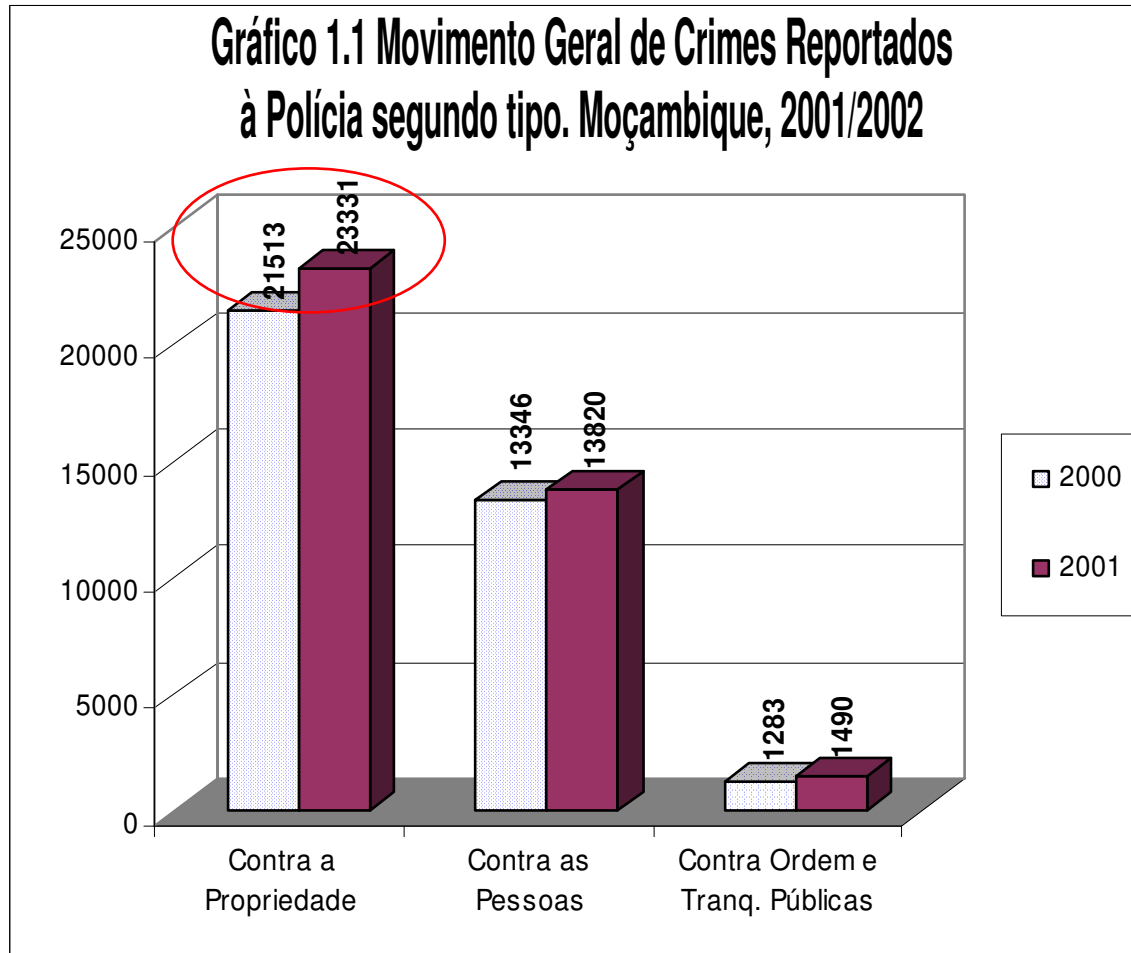


- Popular, but not recommended

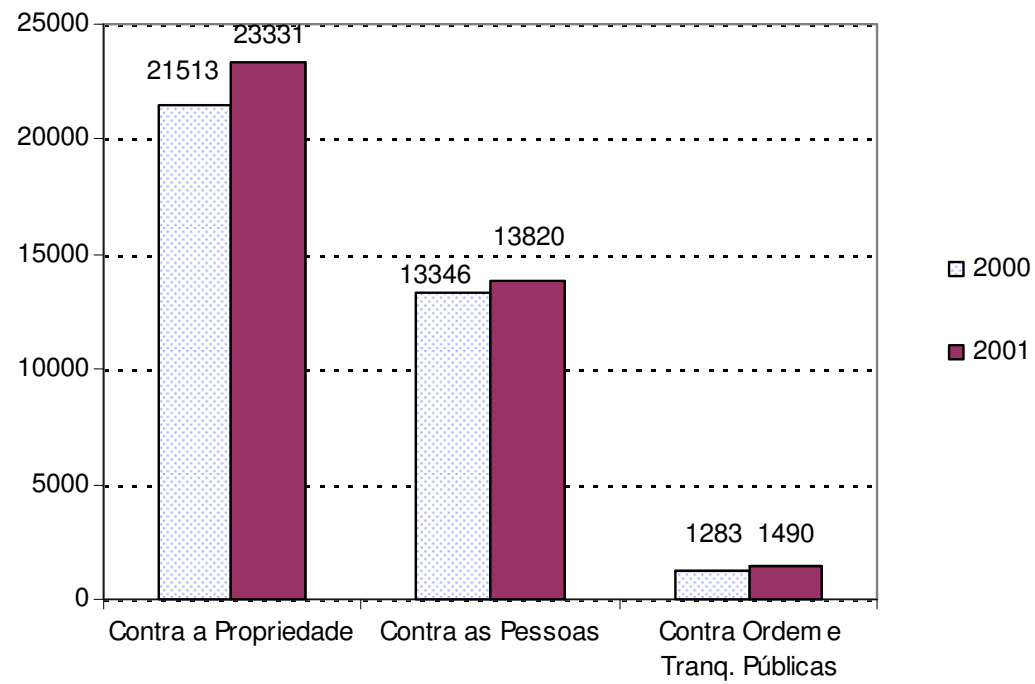


- “Genuine” 3D-chart (3 variables)

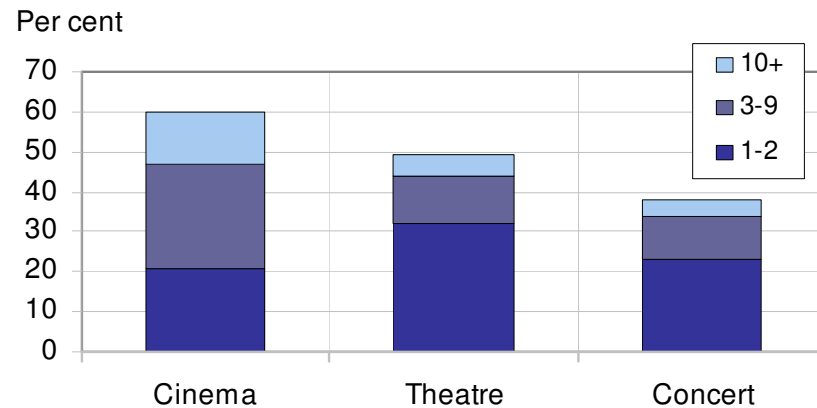
Gráfico 1.1 Movimento Geral de Crimes Reportados à Polícia segundo tipo. Moçambique, 2001/2002



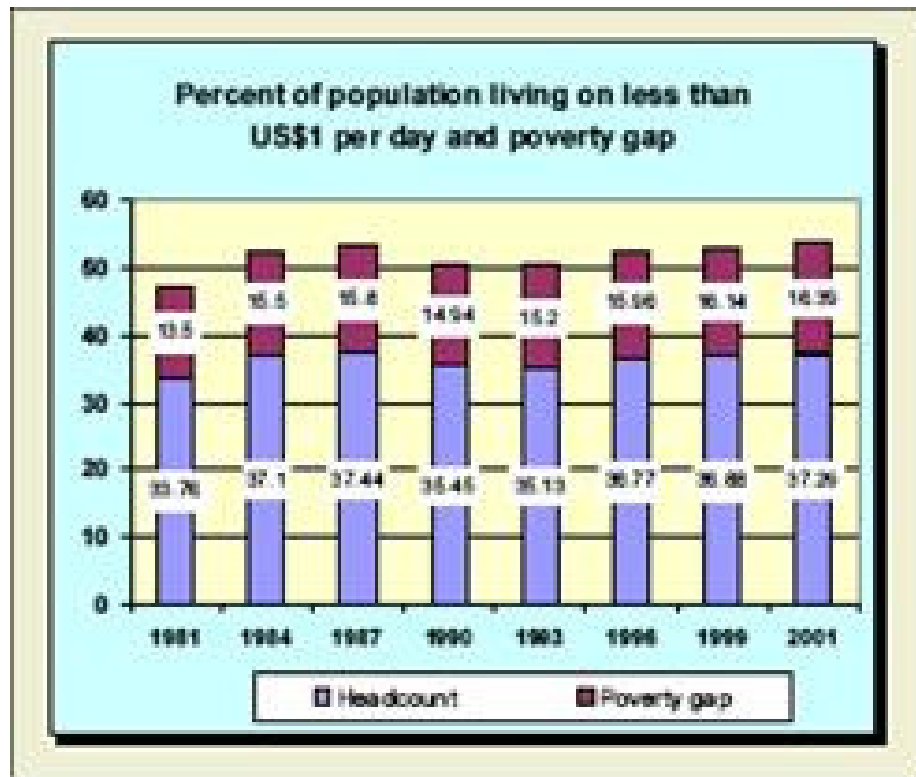
**Gráfico 1.1: Crimes Reportados à Polícia segundo tipo.
2000 - 2001**



Stacked bar charts

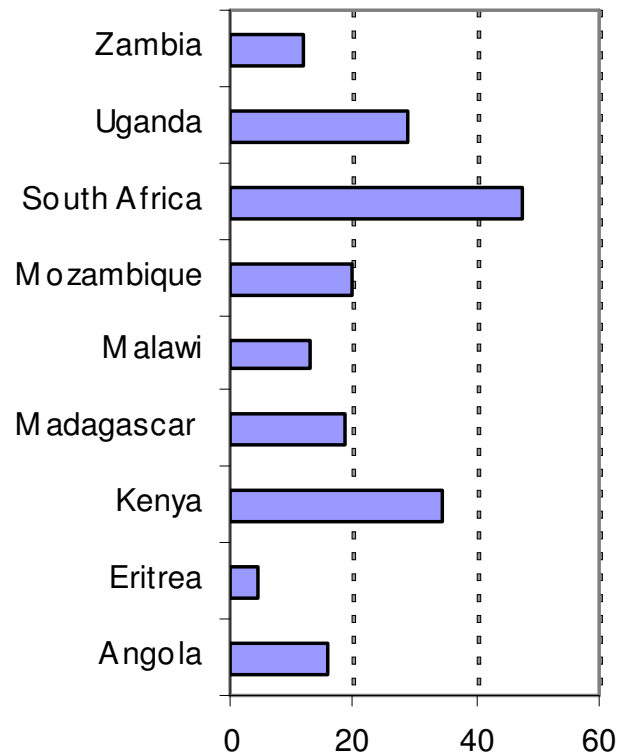


- Show total frequency and how the total is divided into different components



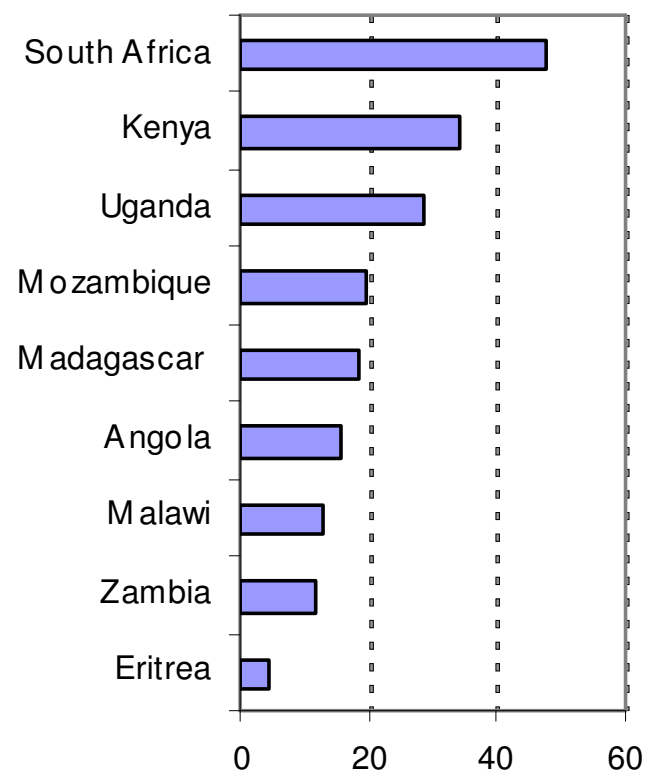
From: African Development Bank 2006. Gender, Poverty and Environmental Indicators on African Countries, page 37

Horizontal bar charts:



- Often used
 - when labels (variable names) are long
 - when there are many variables or classifications
- Here, text should be right justified

Horizontal bar charts:

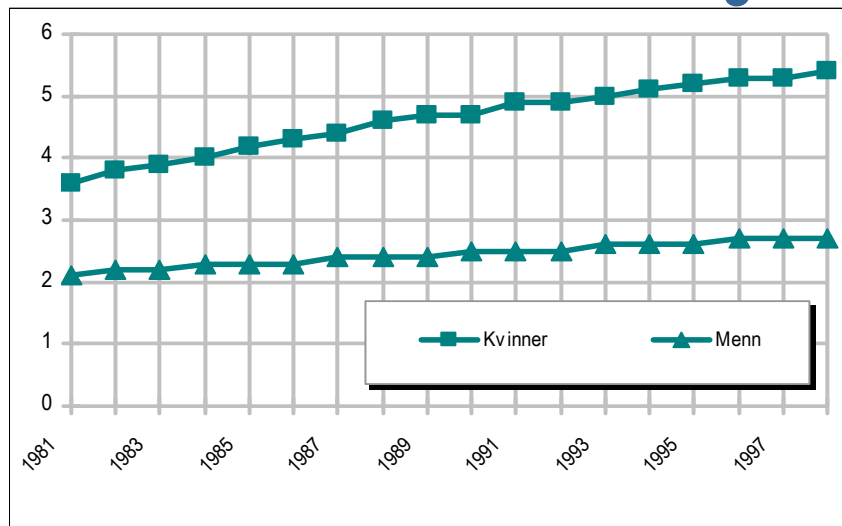


- Often it is better to sort by the value of the indicator (dependent variable)

Line charts:

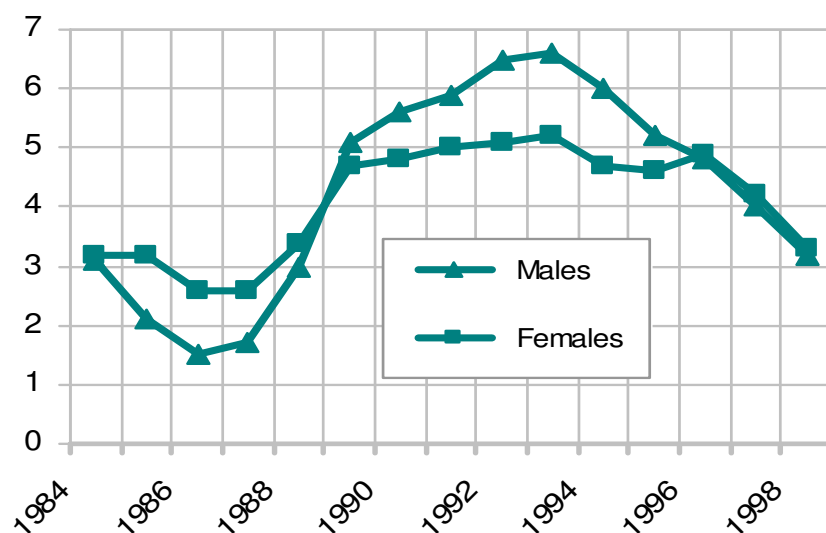
- Most often used for time series
- Time = years, quarters, months, weeks, days, hours and minutes + age
- What is a time “series”? Minimum = 4 data points?
Up to 4, use vertical bar chart
- The longer series, the better?!

Line charts: Symbols?

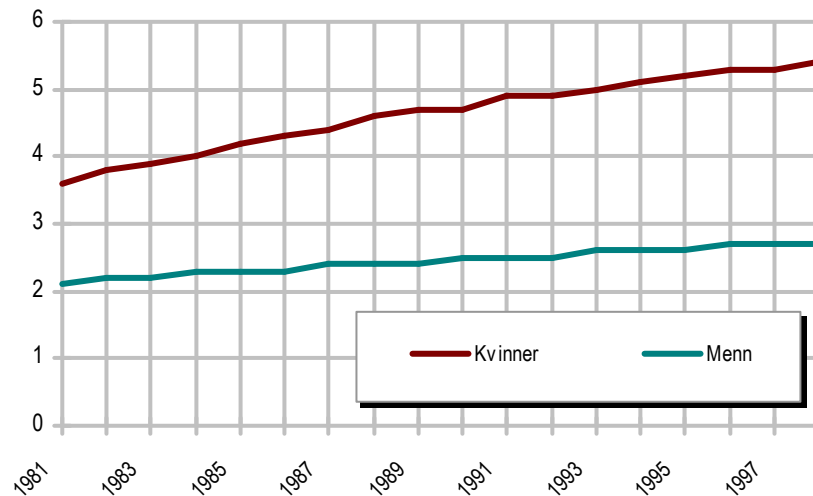


- Indicators or symbols (■ ▽) are often used to differentiate between series, but these symbols overload the chart, especially with crossing time series

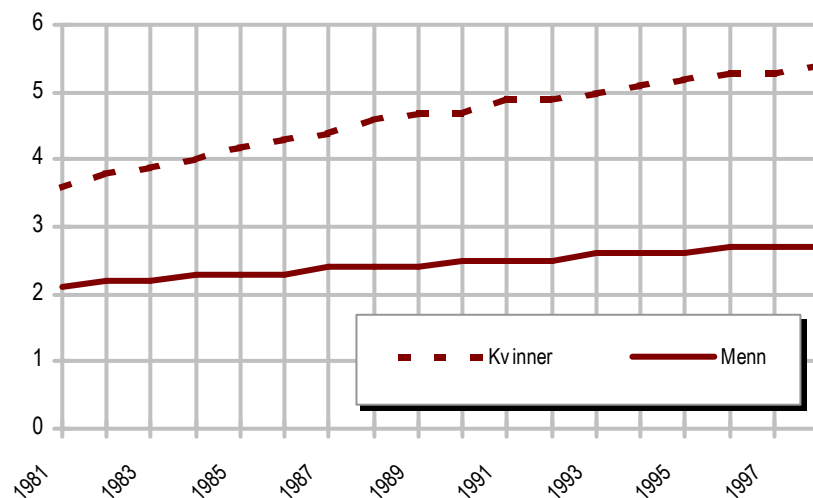
Per cent



Line charts:

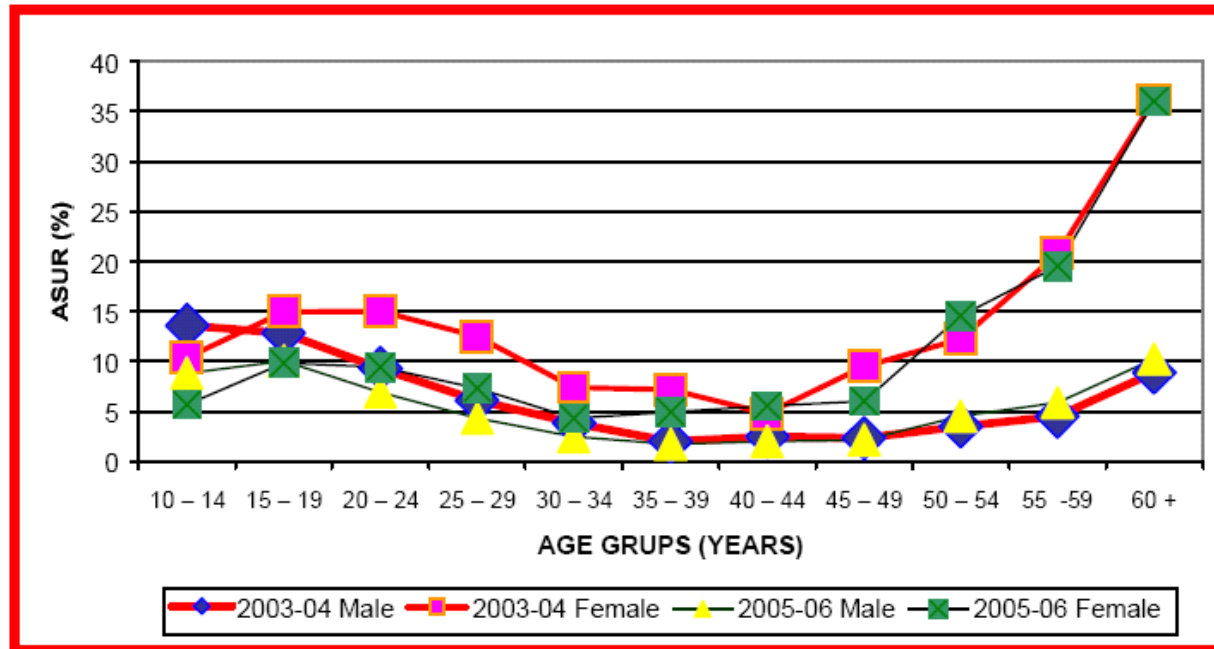


- Better to use different colours ...

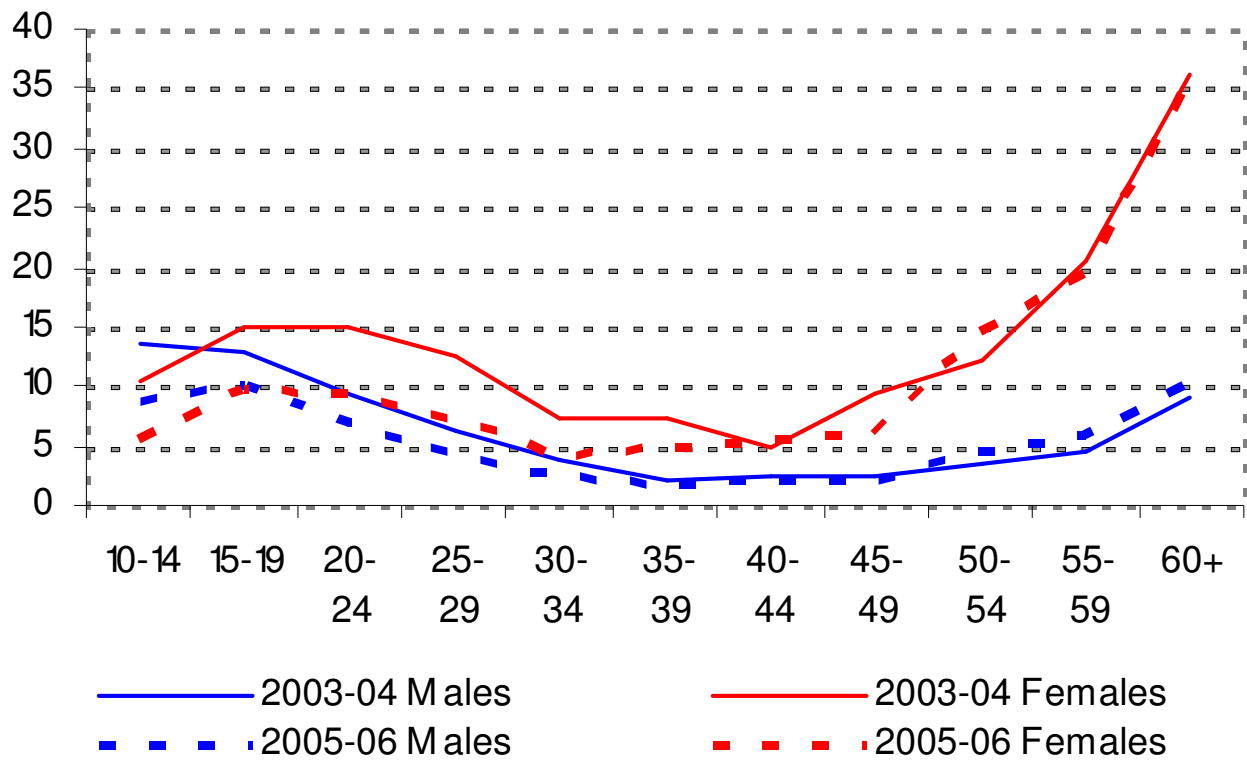


- ... and/or line styles

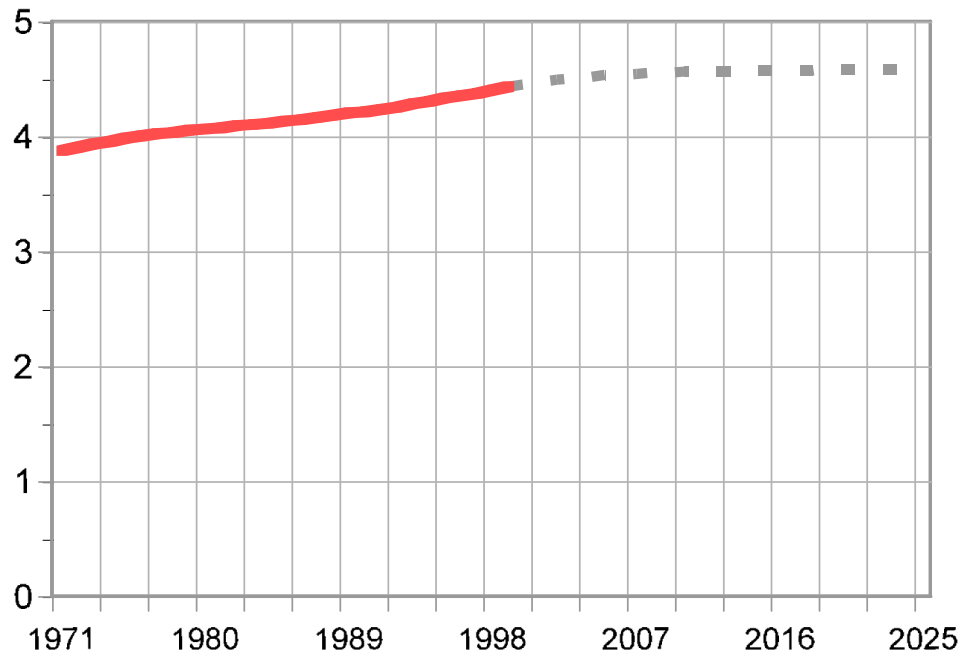
FIGURE-5: AGE SPECIFIC UNEMPLOYMENT RATES (ASUR) BY SEX FOR PAKISTAN



From: Pakistan Labour Force Survey 2005-2006

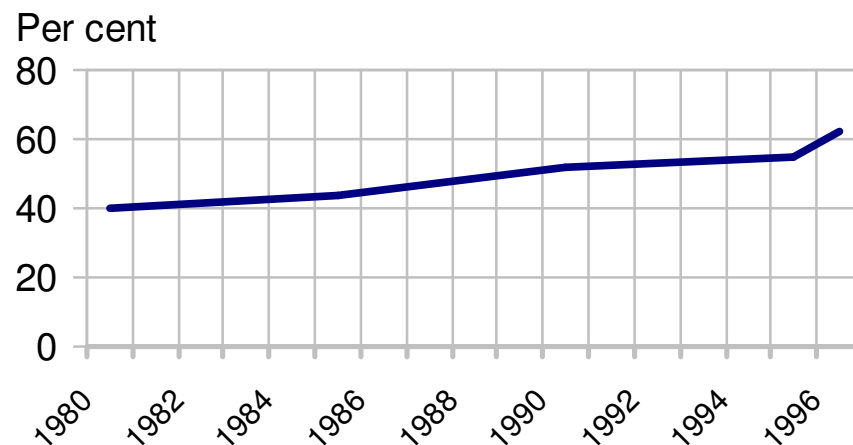
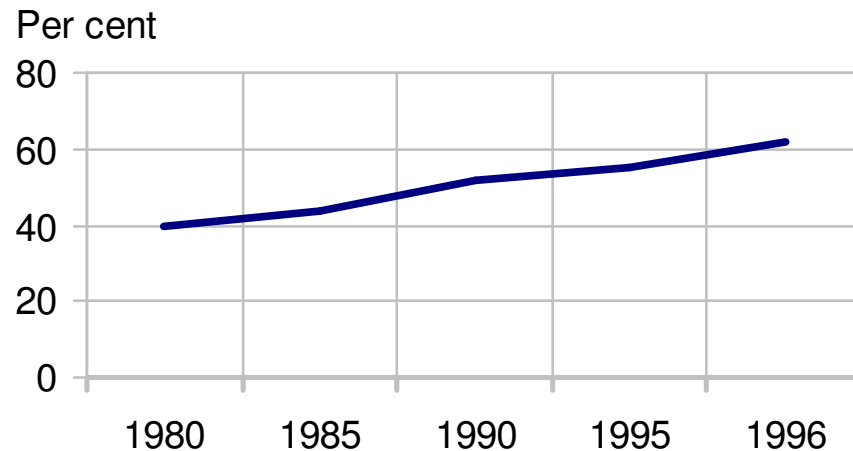


Line charts:



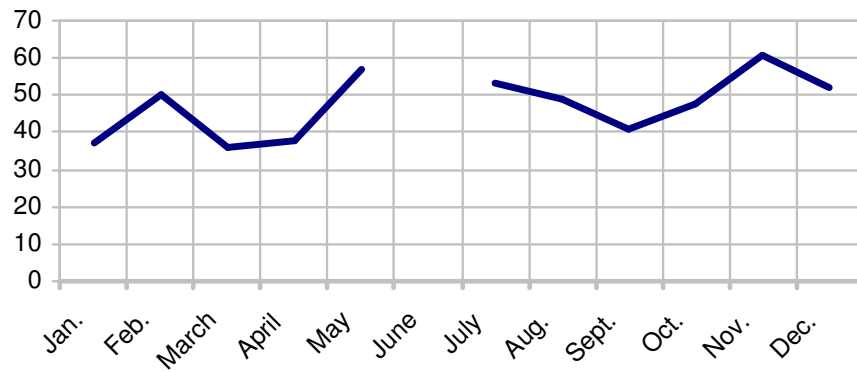
- When showing projections, the projection portion should be clearly differentiated graphically from the rest of the curve

Standard line charts

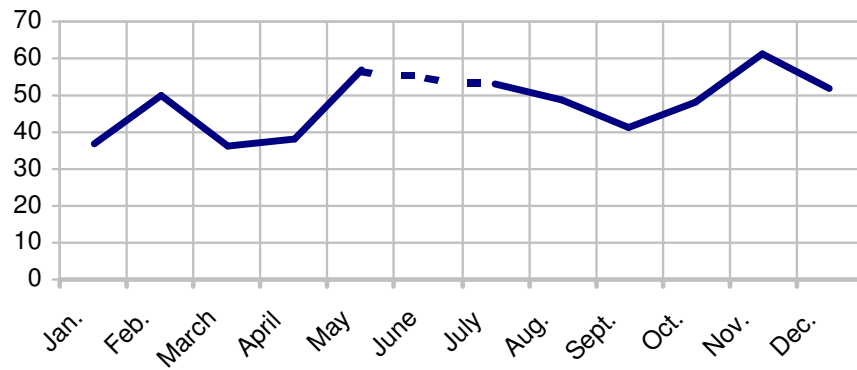


- “A time series” requires at least 4? data points (if not: use bar chart)
- Be careful when the data points are not evenly spaced; like 1980, 1985, 1990, 1995 and 1996

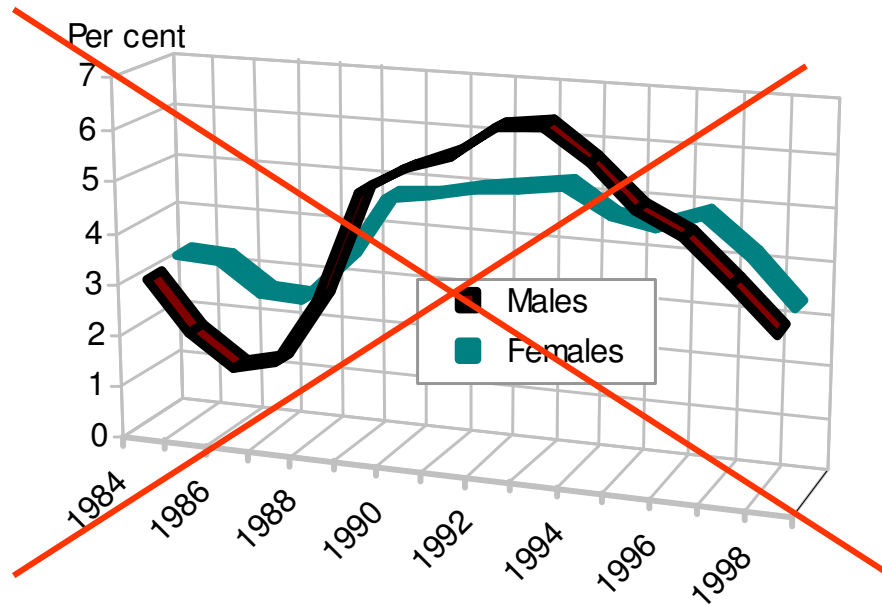
Missing data in time series



- The gap should be bridged with a dashed line

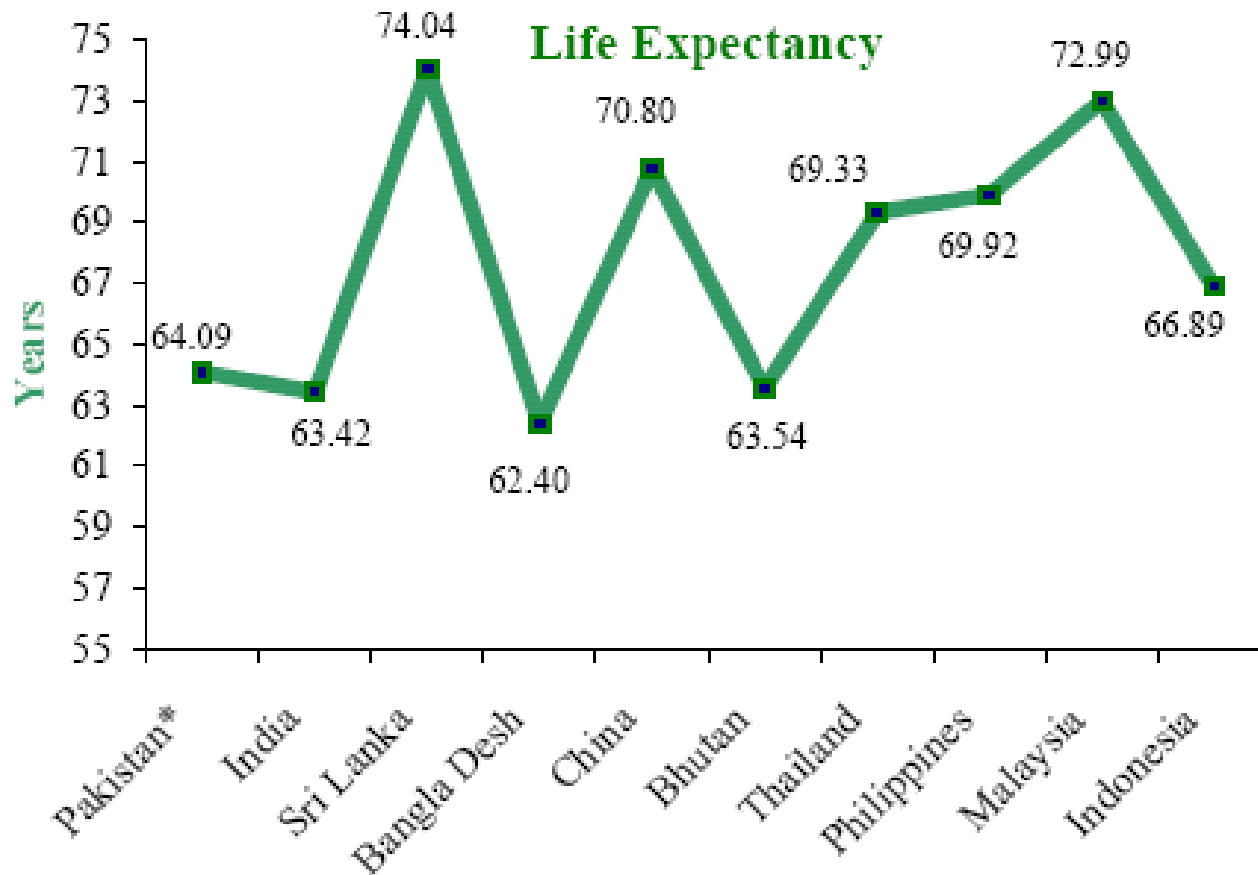


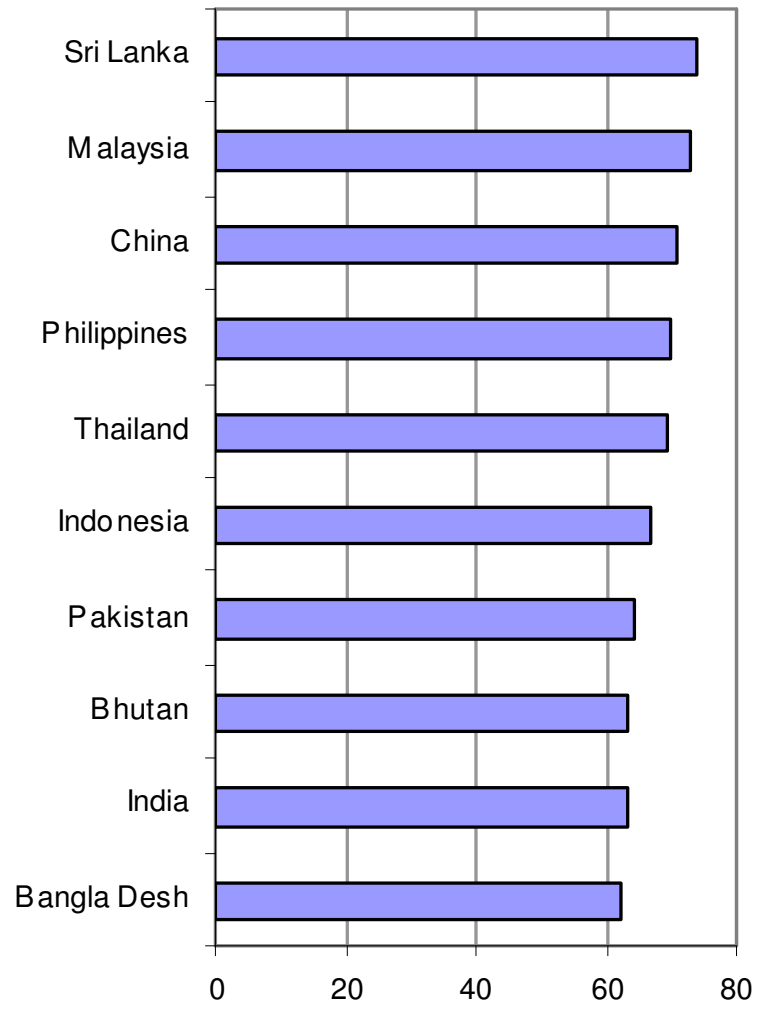
“3D” line charts?



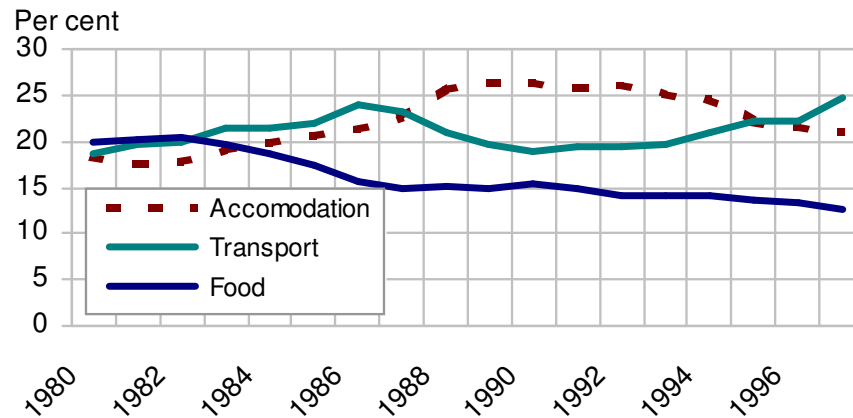
- NO!!

Should *never* be uses to illustrate differences between group, for instance countries

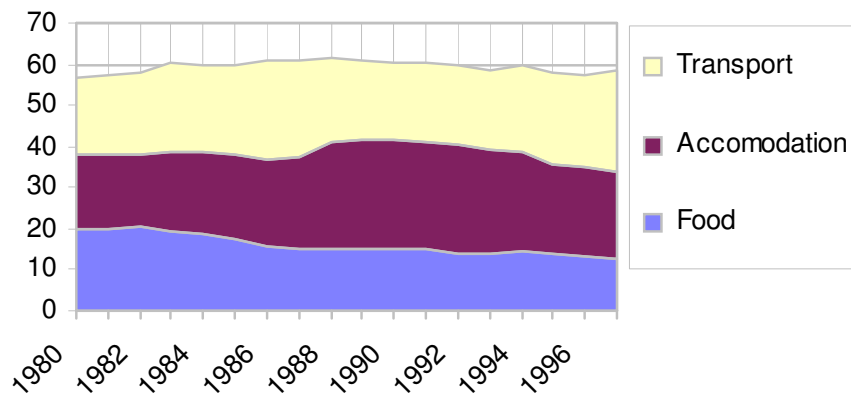




Area chart

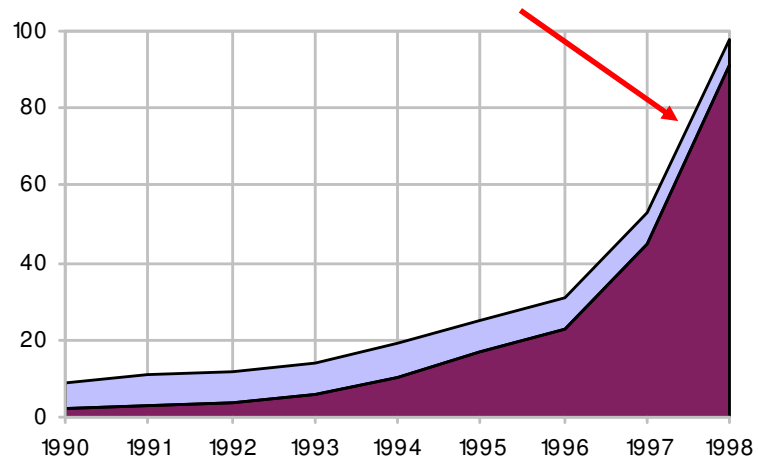


- Area charts are accumulated line charts; like stacked bars.

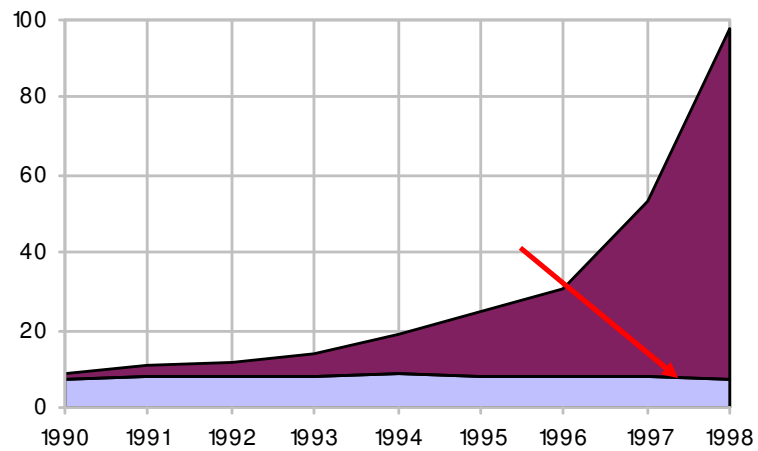


- Shows total and parts
- Don't use with too many groups/values

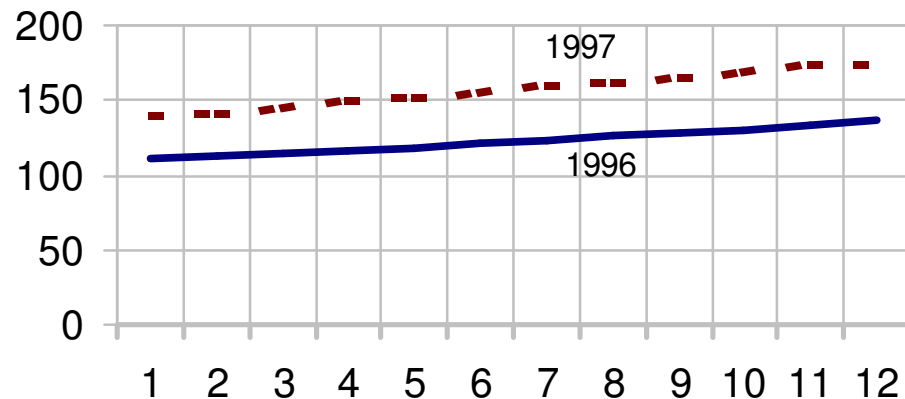
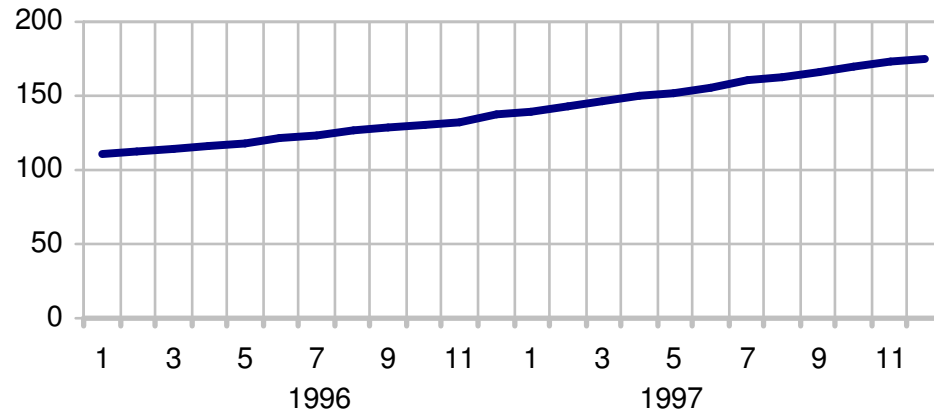
Area chart



- Order of series may be important

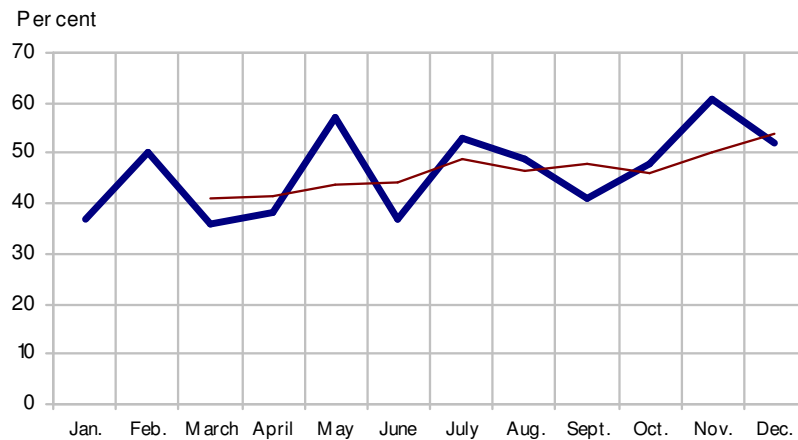


Periodical data



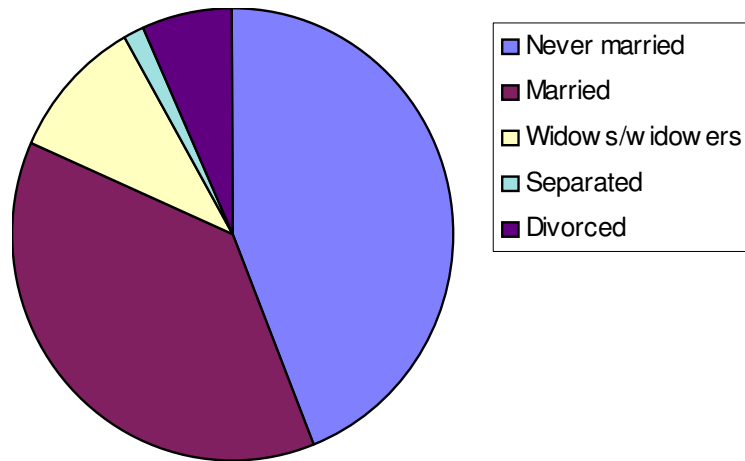
- Weekly, monthly and quarterly data. Monthly data for one year can be presented as a standard line chart
- With two or more years, we have two alternatives

Curve smoothing



- Often used with periodical data
- Moving average (here: 3 years)

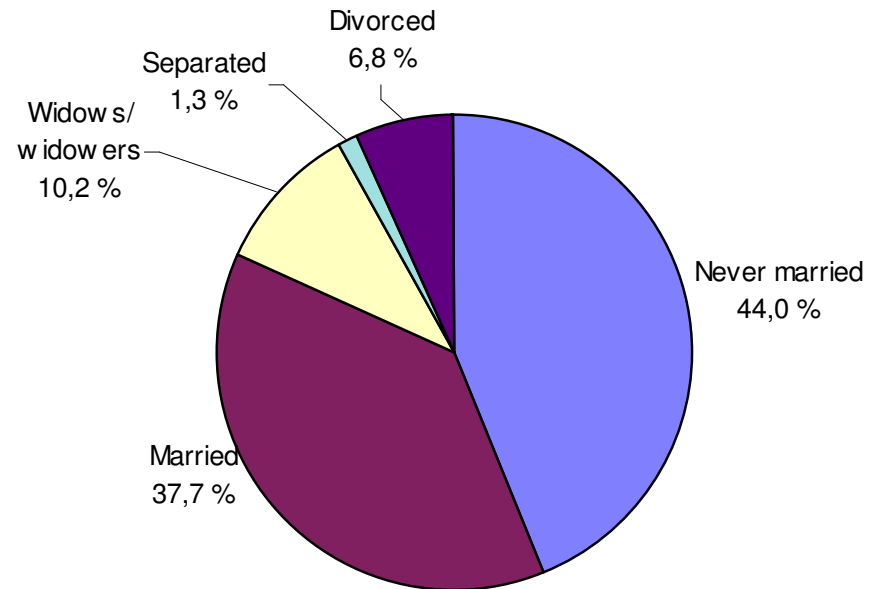
Pie chart



- Shows distribution of (qualitative) variables
- No axis
- Total area = 100%

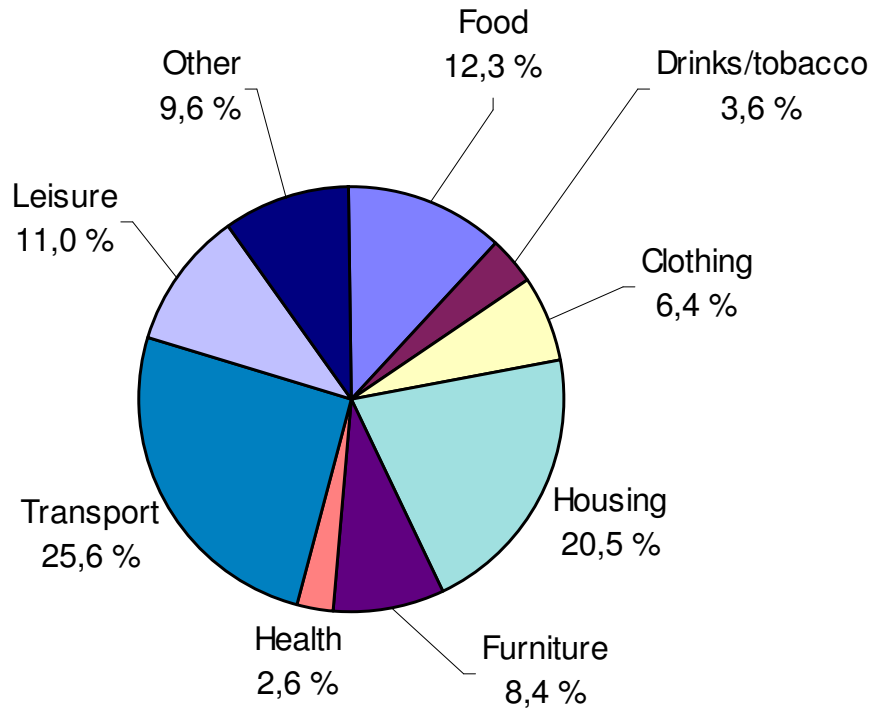
- Instead of legend....

Pie chart



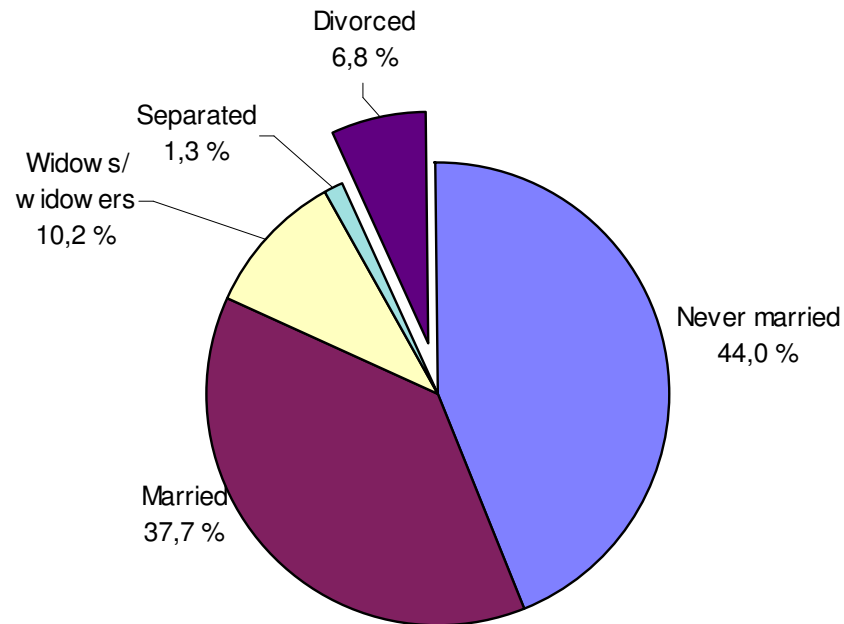
- ...use labels
- Since pie charts have no value axis, show percentage
- Maximum 5 values?

Pie chart



- With too many values, the reader loses interest

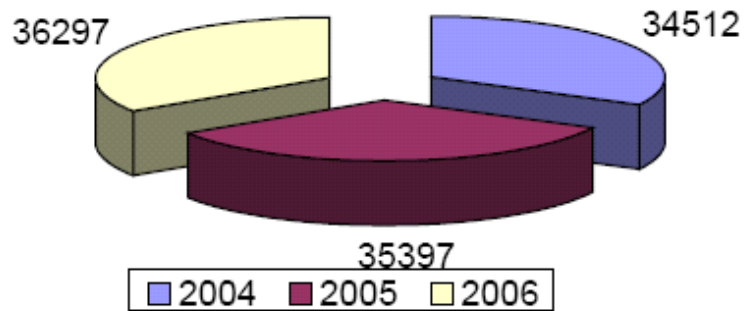
Pie chart



- If we want focus on or draw attention to a special group/sector, this can be done by “exploding”

Pie chart

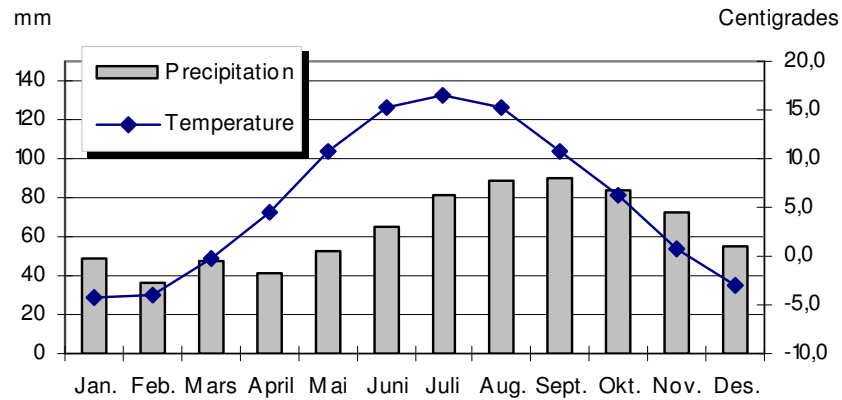
اسقاطات السكان (بالالف) في منتصف الاعوام ٢٠٠٤ - ٢٠٠٦
Projected mid year population (000) for the years 2004 - 2006



Statistical Yearbook of Sudan 2006

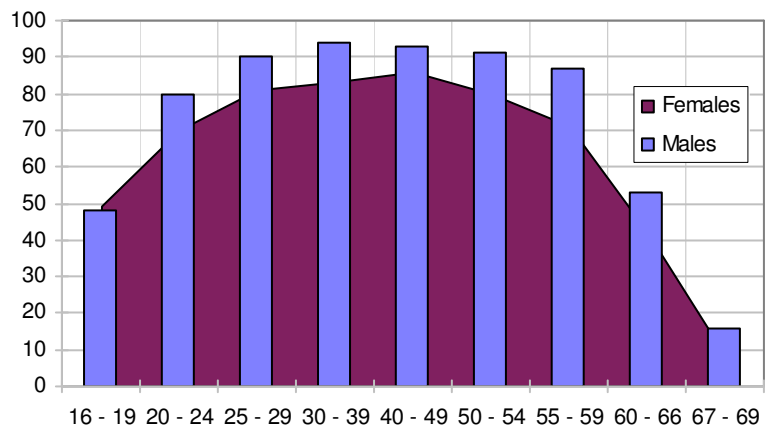
- Pie charts should *never* be used to illustrate time series

Other types



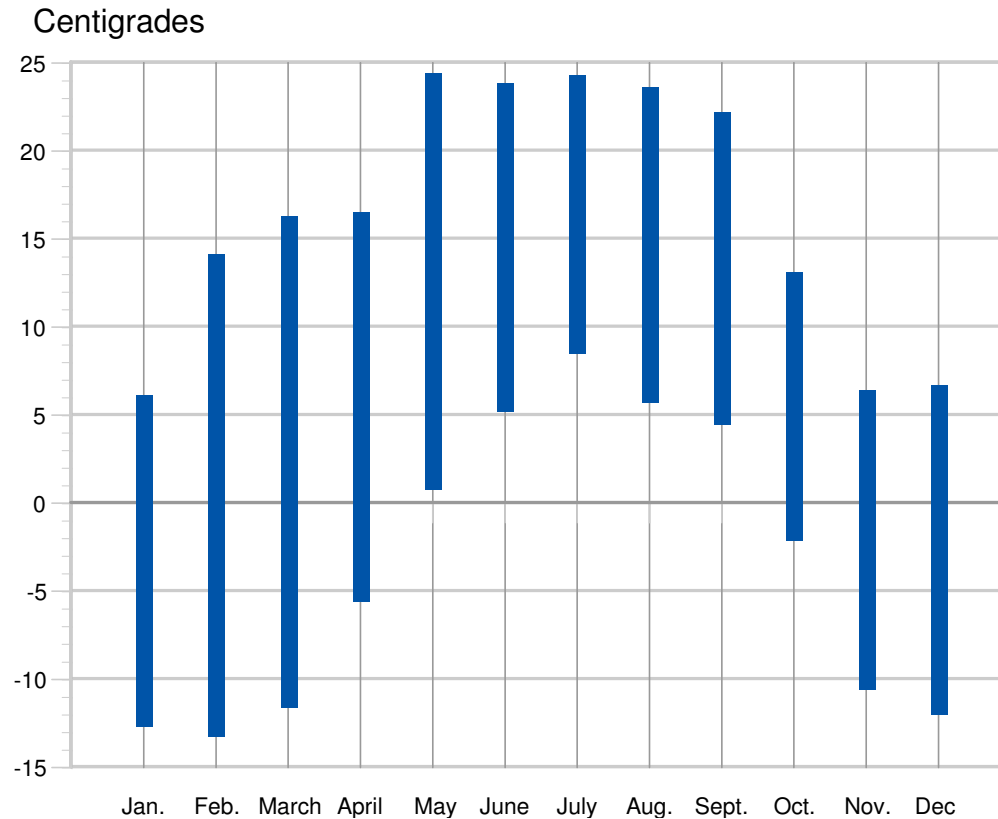
- Combination graphs (also called “overlay”):
 - Bar & line

Male and female labour participation rates by age. 1998



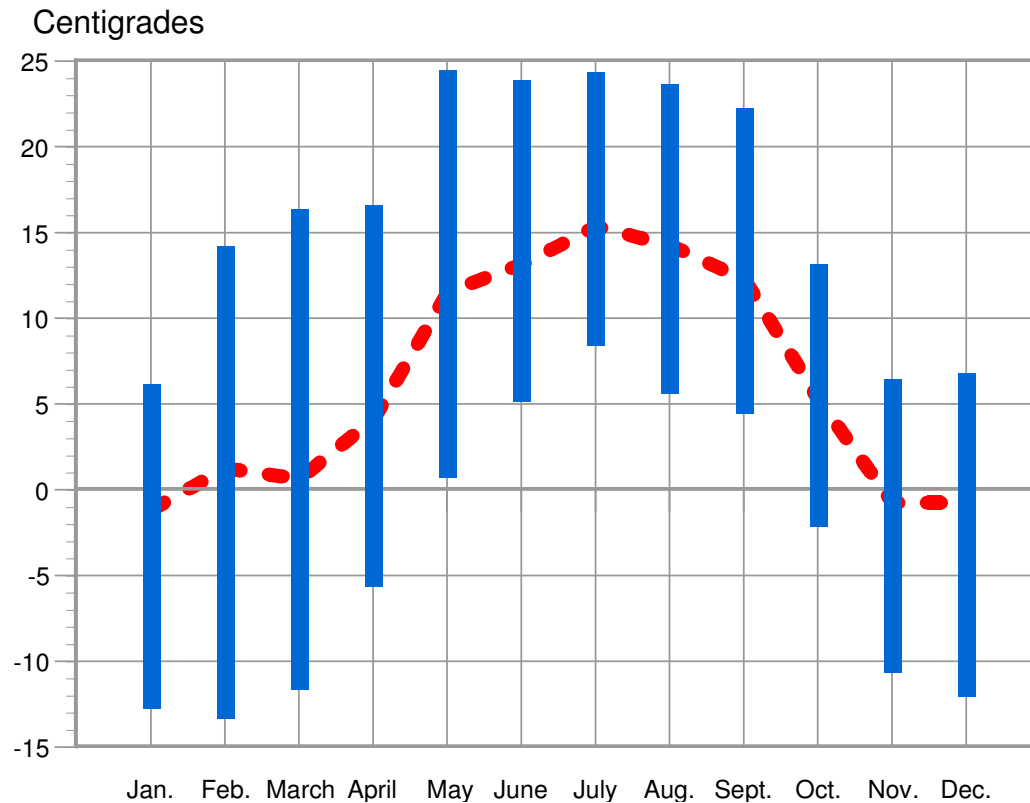
- Bar & area

Other types



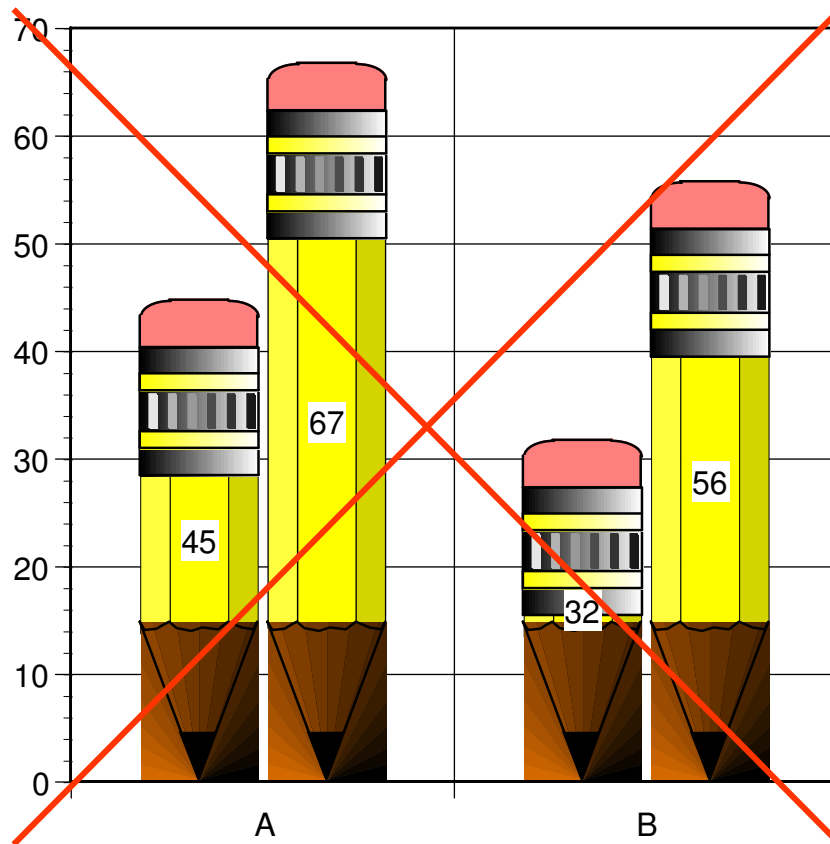
- Min. - max.
(floating column)

Other types



- Or: Min. - max.
+ average
temperature

Other types



- Pictogram: Not recommended