

**NADABAS**

**National Account Data Base System**

**Version 2.1**

**September 2006**

**Installation Guide**

NADABAS has been developed by

Søren Netterstrøm  
Statistics Denmark  
[sne@dst.dk](mailto:sne@dst.dk)

in cooperation with

Jan Redeby  
Statistics Sweden  
[redeby@iLesotho.com](mailto:redeby@iLesotho.com)

and

Instituto Nacional de Estatística  
Maputo  
Moçambique

# Contents

# National Account Data Base System

This guide describes the installation of Nadabas.

For more information about the system, you are referred to the following guides

- The Administrators Guide contains information for administrators about how to do day to day administration of the system.
- The Users Guide covers the functions that all users of the system can utilize.
- The Developers Guide contains the information needed to setup the system and create the Excel workbooks that will be the actual system of National Account.

## Excel Add-in

In order to use the system, the Excel Add-in must be installed and activated. To activate the Excel Add-in, select Tools, Add-ins from the Excel Menu. You should find Nadabas. Put a mark in front to activate. This will activate the Add-In every time you open Excel until you turn the flag off. When the Add-In is activated, the menu-item Nadabas should be visible on the menu line.

Note that installation and activation of Nadabas must be done for each user of the system.

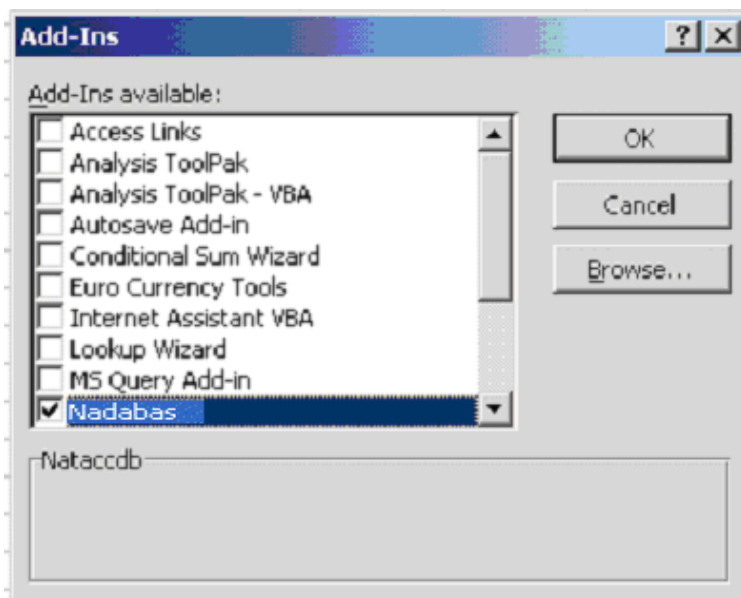


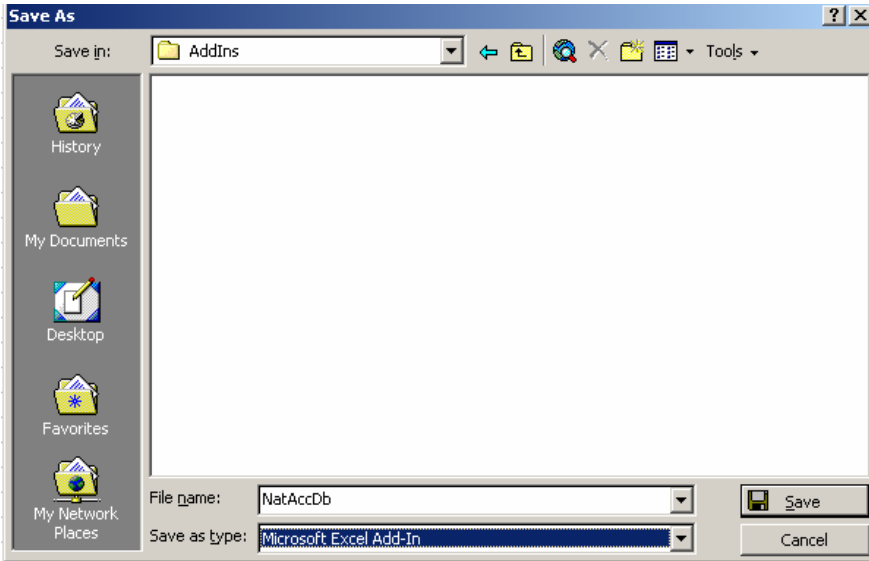
Figure 1

## Installation of Add-in and test-data.

The Add-in is distributed as normal Excel-file, Nadabas.xls.

Open the file with Excel and Enable Macros if necessary.

The Select Save As from the file menu and change the format to Excel Add-in.







**Figure 2**

Excel will automatically select the folder where Add-Ins are stored (this depends on your installation option).

Close the file.

### **Test Data**

Along with the add on, four test-files are delivered.

|  |          |                    |                  |
|--|----------|--------------------|------------------|
|  NatAccDbDemo.mdb | 1.236 KB | Microsoft Acce...  | 15-06-2004 15:00 |
|  Product005.xls   | 125 KB   | Microsoft Excel... | 15-06-2004 14:48 |
|  Product006.xls   | 126 KB   | Microsoft Excel... | 15-06-2004 14:52 |
|  I001.xls         | 77 KB    | Microsoft Excel... | 15-06-2004 15:00 |

**Figure 42**

NadabasDemo is a database containing two families, Products and Industry.

Sheets Product005 and Product006 have the same structure and each has two worksheet, each corresponding to a year. These sheets are only saving data.

I001.xls loads data saved from Product005 and Product007, combine the data and the consolidated data.

All these files are for demonstration only.

## Update with new Version

From time to time, a new Version of Nadabas may be released, correcting problems or adding new functionality to the system.

To install the new version, for each user, open Excel, Select **Tools** -> **Add Ins** from the menu and uncheck Nadabas.

Then install by loading Nadabas.xls and Save as Nadabas.xla as described above.

Then again select **Tools**-> **Add Ins** from Excel Menu and check the Nadabas.

Test that the correct version is installed by selecting **Nadabas** -> **About** from the menu

Check also **Set Nadabas Version** in Administrators Guide for information about how to ensure that every user is running the current version of the software.