

Culture

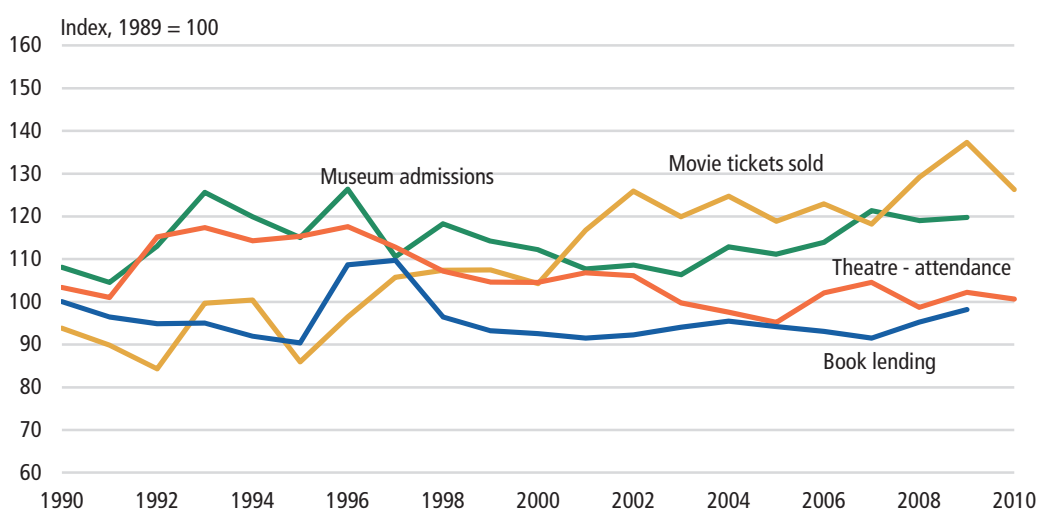
1

Culture

Fewer theatregoers

Admissions to theatres decreased by 4 per cent during the season of 2009-2010 compared to the previous season. Hereby 121,000 fewer visited the theatres although the number of performances had increased by 11 per cent. Hence there were fewer admissions for every performance; 174 admissions in 2009-2010 compared to 185 admissions for every performance in 2008-2009.

Figure 1 Various cultural institutions – activities



More tickets sold for Danish Films

In 2010, the number of tickets sold for films screened at Danish cinemas reached nearly 13 million, which was 8 per cent less than in 2009. The number of tickets sold for American films showed a modest increase of 38,000, corresponding to 0,5 per cent compared to 2009, while Danish films increased by 18 per cent. In 2010, the three films seen by most people were *Avatar*, *Klovn – The Movie* and *Harry Potter and the deathly hallows: Part 1*.

Danish films accounted for 22 per cent of all tickets sold in 2010. Compared to the previous year, this is an increase of 5 percentage points. The most popular Danish film was *Klovn – The Movie* which accounted for 554,382 tickets in 2010.

10.7 million visits to museums

In 2009, admission rates of Danish museums reached 10.7 million visitors. Compared to the 2008 admission rate, there has been an increase of about 2,2 per cent. Of the 249 museums in the statistics, 156 of them were subsidized by the state. In 2009, the zoological and botanical gardens had a total of 3.8 million visitors which is 100,000 more visitors than in 2008.

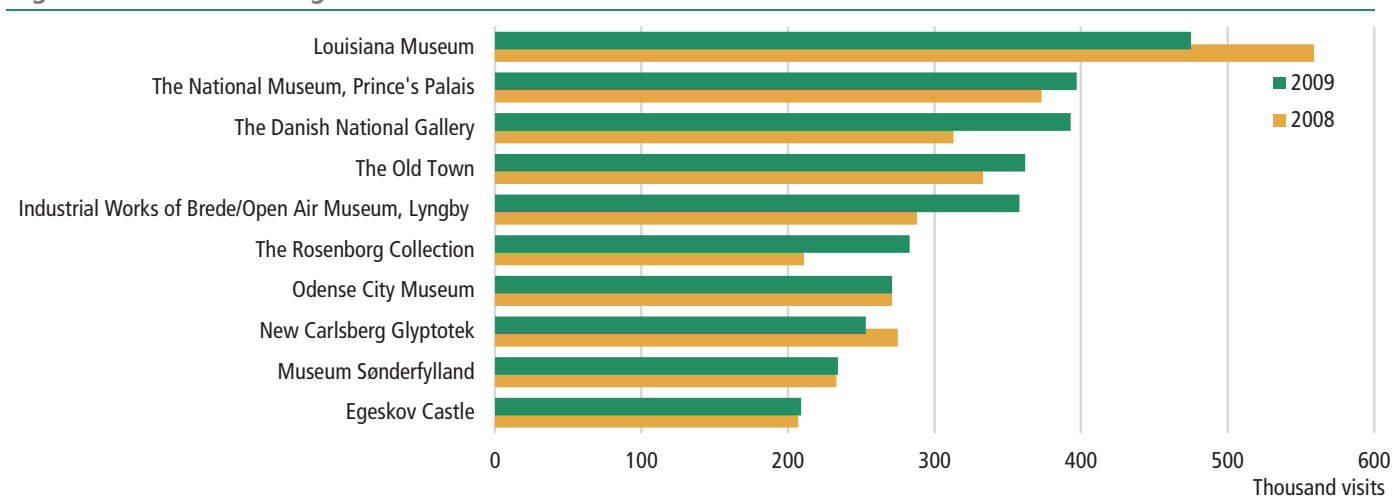
Figure 2 The ten highest admission rates

Table 101

Louisiana accounts for the highest admission rates

The gallery Louisiana accounted for the highest admission rates of 475,000 visitors. Subsequently, the National Museum of Denmark had 397,100 visitors.

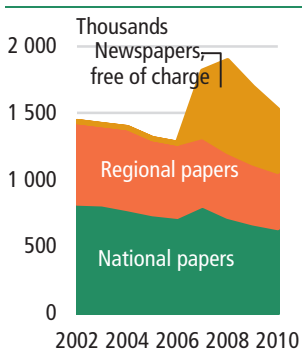
Figure 3 Average daily circulation, total

Table 82 and 83

Newspapers circulation

From 2009 to 2010 the average circulation of daily newspaper has decreased by 11.4 per cent. The average circulation of the 20 largest newspapers has decreased by 11.0 per cent. For the five largest newspapers Jyllands-Posten, Berlingske Tidende, Politiken, Ekstra Bladet and B.T. the average circulation decreased by 6.5 per cent. For Sunday newspapers the average circulation decreased by 5.8 per cent corresponding to 54,000 newspapers.

The elderly watch most television

97 out of 100 households in Denmark have a television set and most of them have access to DR1 or TV2. The average viewing rates of Danes were 3 hours and 21 minutes per day in 2010 which is an increase of 12 minutes since 2009.

There is a general increase in daily television consumption with age, and persons over 55 years have by far the highest television consumption reaching an average of 4 hours and 7 minutes per day. Children aged 4 to 11 on average watch television 2 hour and 3 minutes per day, and this age group thus accounts for the lowest television consumption. In 2010, the most time spent on watching TV was accounted for by the channels TV2, DR1, TV3, DR2 and TV2 Charlie.

The number of people watching a TV channel is widely dependent on the number of people who have access to the channel. For example, almost all households in Denmark with a television set have access to DR1 and TV2, while two out of three have access to TV3.

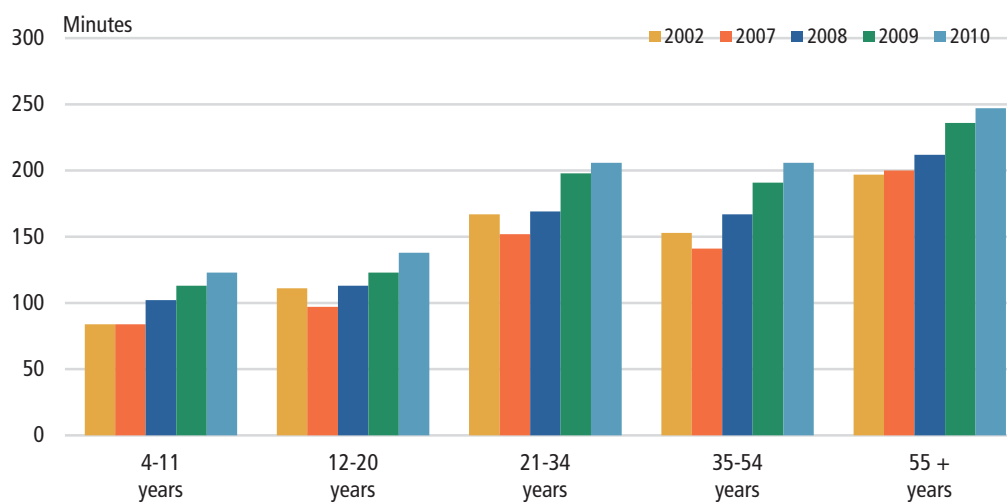
Figure 4 Average viewing rates

Table 89

Table 76 National Church divisions. 2011

1 January	Church divisions				
	Churches	Vicars	Deaneries	Pastorates	Parishes
	number				
All Denmark	2 340	2 067	107	1 274	2 201
København Diocese	119	214	11	80	105
Helsingør Diocese	163	252	13	121	147
Roskilde Diocese	339	268	13	177	320
Lolland-Falster Diocese	109	59	4	48	104
Fyn Diocese	243	190	12	135	233
Haderslev Diocese	185	192	7	130	174
Ribe Diocese	212	159	8	118	204
Aarhus Diocese	355	321	14	176	333
Viborg Diocese	289	189	11	136	276
Aalborg Diocese	326	223	14	153	305

Source: Ministry of Ecclesiastical Affairs

Table 77 Religious ceremonies at the National Church. 2010

	Baptisms as per cent of children born in 2010	Confirmations in 2010 as per cent of 14-15 year-olds 1 January 2011	Church funerals as per cent of all deaths 2010
	per cent		
All Denmark	77.7	69.6	89.5
Copenhagen Diocese	46.7	43.9	76.3
Helsingør Diocese	73.0	59.2	83.9
Roskilde Diocese	86.9	68.1	90.1
Lolland-Falster Diocese	100.1	75.6	88.0
Fyn Diocese	86.3	71.4	92.9
Haderslev Diocese	86.6	74.6	94.5
Ribe Diocese	93.3	76.5	94.1
Aarhus Diocese	81.8	74.3	93.3
Viborg Diocese	90.8	84.6	96.9
Aalborg Diocese	92.8	82.1	95.2

Source: Ministry of Ecclesiastical Affairs

www.statbank.dk/km44

Table 78 Membership of the National Church. 2011

	National Church members as percentage of population							National Church members
	All Denmark			Dioceses of residence				
	Males	Females	Total	Copenhagen	Helsingør, Roskilde and Lolland-Falster	Funen	Jutland	
	per cent							
1 January								
Total	78.5	82.2	80.4	63.2	78.5	84.3	85.9	4 469
Age:								
0-4 years	67.6	67.6	67.6	43.2	65.4	72.4	76.2	220
5-9 years	76.3	76.8	76.6	49.7	73.8	79.9	83.9	251
10-14 years	79.9	80.3	80.1	54.3	77.1	83.5	86.5	274
15-19 years	82.2	83.8	83.0	61.2	80.3	86.0	88.2	296
20-29 years	73.1	75.1	74.1	62.7	70.8	79.0	80.8	481
30-39 years	74.6	78.0	76.3	60.7	74.3	82.0	83.3	559
40-49 years	78.3	83.3	80.8	64.9	79.4	84.6	85.3	657
50-59 years	79.1	84.1	81.6	66.1	79.4	84.2	86.1	585
60-69 years	83.2	88.3	85.8	71.5	83.3	88.6	90.2	586
70-79 years	88.5	91.9	90.3	80.3	88.0	92.4	93.6	349
80 years +	91.5	93.8	93.0	87.3	91.3	94.6	95.2	212

www.statbank.dk/km55

Table 79 Books published. 2010

		Books and pamphlets						
		Type		Edition		Total	Of which	
		Pamphlets (17-48 pages)	Books (over 48 pages)	First editions	Revised editions		School text books ¹	Children's books
Decimal classification	number of titles							
Total		3 341	9 252	10 446	2 147	12 593	893	1 965
Fiction, total	82-88	1 148	2 658	3 113	693	3 806	438	1 565
Novels and short stories		38	1 464	1050	452	1 502	63	1 395
Plays		5	28	31	2	33	3	11
Poetry		76	152	221	7	228	1	24
Comics, etc.		34	71	89	16	105	-	135
Books for children and young persons		995	943	1 722	216	1 938	371	•
Non-fiction, total	00-81.89-99	2 193	6 594	7 333	1 454	8 787	455	400
General	00-07	56	140	186	10	196	6	6
Philosophy	10-19	33	297	271	59	330	11	10
Religion	20-29	71	231	277	25	302	16	32
Sociology	30-39, 59	583	1 461	1 624	420	2 044	49	56
Geography and travel	40-49	116	306	305	117	422	29	5
Natural sciences	50-58	181	360	479	62	541	110	67
Applied sciences	60-69	680	1 929	2 137	472	2 609	50	77
Arts, games, sports	70-79	294	741	959	76	1 035	25	112
Literature, languages	80-81.89	53	262	232	83	315	110	5
History	90-99	126	867	863	130	993	49	30

¹ Not including text books for higher-education establishments, further education, adult education, and self-study.

Source: Danish Bibliographic Centre

Table 80 Books translated. 2010

	Original language							Danish translations, total	
	Swedish	Norwegian	Other Nordic languages	English/ American	German	French	Russian		Other languages
	number of titles								
Translations, total	325	146	35	1 603	190	136	8	218	2 661
Fiction	212	82	31	1 099	119	105	8	170	1 826
Non-fiction	113	64	4	504	71	31	-	48	835

Source: Danish Bibliographic Centre

Table 81 Daily newspapers

	Number of daily newspapers						Circulation					
	Weekdays ¹			Sundays			Weekdays			Sundays		
	2008	2009	2010	2008	2009	2010	2008	2009	2010	2008	2009	2010
	————— thousands —————											
Daily newspapers, total²	37	37	35	10	10	11	1 843	1 660	1 471	1 006	931	877
By size of cir. per issue:												
Under 10 000	6	10	8	-	-	-	28	63	49	-	-	-
10 000-19 999	12	10	11	-	-	1	160	150	152	-	-	13
20 000-29 999	6	4	3	-	-	1	142	98	71	-	-	28
30 000-49 999	1	1	2	1	1	-	47	44	89	38	31	-
50 000-99 999	6	6	5	4	4	5	433	404	331	276	253	336
100 000 +	6	6	6	5	5	4	1 032	900	779	693	648	499

¹ Included free newspapers 24timer, Urban and MetroXpress. ² Average circulation (papers per day) measured in the first half year of 2010.

Source: *Dansk Oplagsbulletin 2010* (Bulletin of the Danish Audit Bureau of Circulations)

www.do.dk

Table 82 The 20 largest daily newspapers

	Circulation ¹			
	Weekdays ²		Sundays	
	2009	2010	2009	2010
	————— thousands —————			
MetroXpress	228	199	•	•
24timer	180	138	•	•
Urban	162	127	•	•
Jyllands-Posten	120	112	161	147
Politiken	108	103	140	128
Berlingske tidende	103	101	125	121
Ekstra Bladet	84	74	113	103
Børsen	73	73	•	•
B.T.	75	68	108	95
JydskeVestkysten	65	63	72	70
Nordjyske Stiftstidende	57	52	64	60
Fyens Stiftstidende	51	47	63	57
Frederiksborg Amts Avis	44	41	•	•
Kristeligt Dagblad	26	27	•	•
Information	22	22	•	•
Aarhus Stiftstidende	24	22	31	28
Lolland-Falsters Folketidende	19	18	•	•
Vejle Amts Folkeblad/Fredericia Dagblad	20	18	•	•
Sjællandske	18	17	•	•
Horsens Folkeblad	15	14	•	•

¹ Average circulation (papers per day) measured in the first half of 2010. ² Include free newspapers 24timer, Urban and MetroXpress.

Source: *Dansk Oplagsbulletin 2010* (Bulletin of the Danish Audit Bureau of Circulations)

Table 83	Magazines		
	Circulation		
	2008	2009	2010
	thousands		
Billed Bladet	195	193	186
Familie Journalen	194	185	183
Se & Hør	188	169	159
Ude og Hjemme	162	158	143
Hjemmet	149	143	132
Her & Nu	109	108	106
Ugebladet Søndag	90	83	81
Bo Bedre	84	80	78
Femina	65	61	63
Alt for damerne	73	66	61
Illustreret Videnskab	71	65	54
Kig Ind	67	60	53
Woman	49	50	48
M!	46	46	45
Isabellas	45	44	44
Costume	42	43	41
Vi unge	45	43	40
I Form	69	57	39
Anders And og Co.	55	48	39
Hendes Verden	45	40	39

Note: Included are major, consumer-paid magazines. Free magazines are not included.

Source: *Dansk Oplagsbulletin 2010* (Bulletin of the Danish Audit Bureau of Circulations)

Table 84	Advertising expenditure					
	2007		2008		2009	
	DKK mio.	per cent	DKK mio.	per cent	DKK mio.	per cent
Advertising expenditure, total	29 180	100.0	27 633	100.0	24 303	100.0
Press advertising turnover, total	8 646	29.6	7 936	28.7	6 168	25.4
Daily papers	3 229	11.1	2 735	9.9	2 065	8.5
Magazines	466	1.6	437	1.6	328	1.3
Professional journals, etc.	1 007	3.4	999	3.6	742	3.1
Local papers	2 704	9.3	2 554	9.2	2 143	8.8
Other	1 240	4.2	1 211	4.4	890	3.7
Other advertising activities, total	20 534	70.4	19 697	71.3	18 135	74.6
Radio	285	1.0	250	0.9	217	0.9
TV	2 516	8.6	2 431	8.8	2 059	8.5
Cinemas	56	0.2	60	0.2	53	0.2
Printed matter	6 477	22.2	6 705	24.3	6 067	25.0
Sports sponsorship	1 182	4.0	1 258	4.6	1 104	4.5
Outdoor advertising	473	1.6	516	1.9	491	2.0
Internet	2 502	8.6	2 926	10.6	3 030	12.5
Exhibitions and conferences	1 309	4.5
Commercial articles	553	1.9	624	2.2	547	2.2
Costs for administration and production	5 181	17.8	4 927	17.8	4 567	18.8

Note: Advertising expenditure is calculated at factor prices, i.e. the price the purchaser of an advertisement pays, excluding taxes.

Source: *The advertising expenditure survey in Denmark 2009*, Danish Audit Bureau of Circulation

www.do.dk

Table 85 Hours of radio broadcasting, DR

	2008		2009	
	Analog	Digital	Analog	Digital
	hours			
By kind of programme	53 969	212 363	54 258	221 460
News service	4 603	10 933	4 692	10 147
Current affairs	22 877	1 691	23 472	1 412
Information and culture	4 162	85	4 224	1 321
Drama/Fiction	141	9 793	111	1 602
Music	13 494	182 518	14 722	199 822
Entertainment	6 794	7 138	5 301	6 995
Sports	980	11	797	7
Education	5	-	-	-
Choir- and orchestra activity	103	48	112	1
Presentation and Service	811	146	827	153

Source: Danish Broadcasting Corporation

Table 86 Hours of television broadcasting, DR and TV2

	DR (Danish Broadcasting Corporation)		TV2	
	2008	2009	2008	2009
	hours			
Television hours of broadcasting, total	11 632	22 201	12 855	12 918
National TV, total	11 632	22 201	7 241	7 296
News service	878	9 689	613	799
Current affairs	1 700	1 781	950	1 172
Information and culture	3 148	3 720	494	456
Education	335	325	-	-
Music	435	766	19	11
Entertainment	283	367	399	517
Danish drama	479	728	314	339
Foreign drama	3 534	4 147	3 226	3 234
Sports	469	160	870	500
Programme introduction & service	371	518	356	268
Regional TV, total	•	•	4 012	4 182
Advertising	•	•	1 602	1 440
By kind of production¹				
Own productions	3 315	3 588	1 578	1 511
Other productions	1 958	2 017	3 235	2 999
Repeat broad casts	6 359	16 596	2 428	2 786

¹ For TV2 excl. regional TV and advertising.

Source: DR (Danish Broadcasting Corporation) and TV2

Table 87 Household access to TV-channels

	2009		2010	
	Number of households	Number of households with television- sets	Number of households	Number of households with television- sets
	thousands	per cent	thousands	per cent
Total number of households per 1st Jan.	2 564	•	2 573	•
Of which households with television sets	2 483	100	2 496	100
DR 1	2 468	99	2 486	100
DR 2	2 363	95	2 468	99
DR Update	1 221	49	1 490	60
DR K	•	•	1 956	78
DR HD	•	•	1 080	43
DR Ramasjang	•	•	1 988	80
TV 2	2 453	99	2 479	99
TV 2 Zulu	1 778	72	1 766	71
TV 2 Charlie	1 719	69	1 753	70
TV 2 Film	1 459	59	1 405	56
TV 2 News	1 442	58	1 530	61
Channel 4	1 567	63	1 653	66
Channel 5	1 516	61	1 541	62
Channel 5HD	243	10	275	11
6'eren	1 445	58	1 370	55
Voice TV	889	36	873	35
TV 3	1 680	68	1 714	69
TV 3+	1 602	65	1 556	62
TV3+ HD	•	•	279	11
TV3 Puls	1 313	53	1 123	45
TV 2 Sport	1 217	49	1 224	49
TV 2 Sport HD	211	8	273	11
Discovery Channel	1 453	59	1 408	56
Discovery World	384	15	429	17
Discovery Science	246	10	278	11
Discovery travel & living	284	11	297	12
Animal Planet	1 376	55	1 353	54
Cartoon Network	1 188	48	1 120	45
Boomerang	238	10	528	21
MTV	1 278	51	1 260	51
National Geographic	1 235	50	1 198	48
Nickelodeon	742	30	792	32
VH1	808	33	883	35
TCM	854	34	1 016	41
Disney Channel	1 225	49	1 194	48
Playhouse Disney	413	17	365	15
Disney XD	•	•	662	27
Canal 9	441	18	713	29
Eurosport	1 336	54	1 284	51
Eurosport 2	•	•	472	19
DK4	1 351	54	1 407	56
NRK	993	40	982	39
TV2 Norge	822	33	746	30
Sweden 1 (SVT1)	1 357	55	1 391	56
TV4 (Sweden)	1 144	46	1 048	42

Source: TNS Gallup AIS, Annual Survey 2010

Table 88 Average television viewing per day: Danish and other TV-channels. 2010

	4-11 years	12-20 years	21-34 years	35-54 years	55 years +	Total	Men	Women
	(hours:minutes) per day							
All stations, 2010	2:03	2:18	3:26	3:26	4:07	3:21	3:19	3:23
DR1	0:24	0:16	0:27	0:38	1:00	0:39	0:36	0:41
DR2	0:01	0:02	0:06	0:09	0:17	0:09	0:09	0:09
DR Update	0:00	0:00	0:01	0:01	0:02	0:01	0:01	0:01
DR HD	0:00	0:01	0:02	0:03	0:03	0:02	0:03	0:02
DR K	0:00	0:00	0:01	0:02	0:03	0:02	0:02	0:02
DR Ramasjang	0:17	0:04	0:02	0:02	0:01	0:03	0:03	0:04
TV 2	0:16	0:30	0:52	0:59	1:22	0:57	0:53	1:00
TV 2 Zulu	0:01	0:07	0:10	0:05	0:02	0:05	0:05	0:04
TV2 Charlie	0:01	0:01	0:01	0:06	0:15	0:07	0:06	0:08
TV 2 Film	0:01	0:01	0:02	0:03	0:02	0:02	0:02	0:02
TV 2 News	0:01	0:01	0:04	0:06	0:10	0:06	0:06	0:05
TV 2 Sport	0:01	0:01	0:02	0:02	0:04	0:03	0:04	0:02
TV3	0:03	0:11	0:18	0:11	0:06	0:10	0:07	0:13
TV3+	0:02	0:08	0:14	0:08	0:03	0:07	0:09	0:05
TV3 Puls	0:01	0:02	0:04	0:04	0:02	0:03	0:02	0:03
Channel 5	0:01	0:05	0:11	0:09	0:04	0:07	0:06	0:07
Channel 4	0:01	0:03	0:08	0:04	0:03	0:04	0:02	0:06
6'eren	0:01	0:02	0:04	0:03	0:02	0:03	0:03	0:02
Other TV	0:52	0:43	0:36	0:30	0:25	0:33	0:38	0:29
All stations, 2009	1:53	2:03	3:18	3:11	3:56	3:09	3:05	3:13

Source: TNS Gallup A/S and the DR media research

Table 89 The Danish Broadcasting Corporation and TV2, revenue and expenditure

	Danish Broadcasting Corporation			TV2		
	2007	2008	2009	2007	2008	2009
	thousands					
Number of household	2 375	2 352	2 417	2 375	2 352	2 417
Radio and TV licenses¹	2 478²	2 468³	2 514⁴	2 478²	2 468³	2 514⁴
Of which: Medielicens	2 311	2 294	2 367	•	•	•
Licences for radio only	64	58	50	•	•	•
Companies witch pay licenses	103	116	97	•	•	•
	DKK mio.					
Annual accounts						
Revenue, total	3 618	3 674	3 760	2 272	2 206	2 060
Of which: Licenses	3 326	3 343	3 392	-	-	-
Commercial, sponsors	2	2	4	1 687	1 597	1 219
Other	290	329	364	585	609	841
Total expenditure	3 278	3 330	3 338	-2 120	-1 945	-1 932

¹ DR- licenses and Programme service collects the total licenses fees for DR, TV2, local radio- and TV and others. ² 1.6.2007. ³ 31.12.2008. ⁴ 31.12.2009.

Source: DR and TV2

Table 90		Cinemas		
		2008	2009	2010
Cinemas at end of year				
Number of cinemas		164	163	162
Number of cinema screens (thousands)		58	58	58
Cinema activity				
Paid admissions (thousands)		13 246	14 082	12 952
Admissions takings excl. VAT (DKK mio.)		734	837	796
Film hire (DKK mio.)		325	376	354

www.statbank.dk/bio1 and [bio2](http://www.statbank.dk/bio2)

Table 91		The most popular films shown in cinemas			
1976-2010			2010		
Week and year when first shown	Film titles	Total number of paid admissions	Week and year when first shown	Film titles	Total number of paid admissions
thousands			thousands		
1 04-1998	Titanic	1 363	1 51-2009	Avatar	836
2 51-2001	The Lord of the Rings: The Fellowship of the Ring	1 330	2 50-2010	Klovn - The Movie ¹	554
3 40-1976	Olsen banden ser rødt ¹	1 201	3 46-2010	Harry Potter and the deathly hallows: Part 1	522
4 51-2003	The Lord of the Rings: The Return of the King	1 166	4 30-2010	Inception	515
5 51-2009	Avatar	1 158	5 05-2010	Far til fire – på japansk ¹	417
6 51-2002	The Lord of the Rings: The Two Towers	1 122	6 34-2010	In a better world ¹	406
7 11-1976	One Flew over the Cuckoo's Nest	1 120	7 27-2010	Shrek forever after	357
8 39-1977	Olsen banden deruda ¹	1 045	8 34-2010	Toy story 3	357
9 51-1982	E.T. – The Extra Terrestrial	1 019	9 41-2010	Olsen-banden på de bonede gulve ¹	328
10 37-1978	Grease	1 006	10 22-2010	Sex and the city 2	328

¹ Danish films.

www.statbank.dk/bio1 and [bio2](http://www.statbank.dk/bio2)

Table 92 Films by nationality. 2010

	Number of films shown	Paid admissions	Admission takings total	Film hire	Film hire as percentage of admissions takings
		thousands	DKK thousands		per cent
Films shown in cinemas, total	641	12 952	795 677	353 812	44
Danish	118	2 882	160 045	71 897	45
Foreign, total	523	10 070	635 632	281 915	44
Of which European	223	1 959	115 660	50 011	43
American	254	7 744	499 452	223 606	45
Other	46	367	20 520	8 298	40
Films shown in cinemas in 2009	665	14 082	837 299	376 236	45

www.statbank.dk/bio1 and [bio2](http://www.statbank.dk/bio2)

Table 93 Films by year when first shown. 2010

	Number of films shown	Paid admissions	Admissions takings, total	Film hire	Film hire as percentage of admissions takings
		thousands	DKK thousands		per cent
Films shown in cinemas, total	641	12 952	795 677	353 812	44
First shown:					
2010	222	11 291	676 810	297 549	44
2009	139	1 608	116 874	55 459	47
2008	54	14	419	165	39
2007	31	5	99	52	52
2006	30	3	74	41	56
2001-2005	86	10	321	143	45
1991-2000	30	5	208	75	36
1981-1990	15	2	83	37	45
1971-1980	14	1	40	19	49
1961-1970	8	6	403	131	32
1960 and before	12	7	346	141	41

www.statbank.dk/bio1 and [bio2](http://www.statbank.dk/bio2)

	Sales		Turnover	
	2009	2010	2009	2010
	number		DKK thousand	
Total¹	137 364 218	281 196 853	526 005	452 010
CD-albums	5 608 505	5 432 531	313 517	262 580
LP/ MC	23 550	39 506	2 114	3 922
DVD-audio	18 277	36 101	840	1 559
CD-sets ²	1 019 318	606 097	84 028	46 837
CD/sacd	417	183	32	16
CD-maxi/ Cd-single	12 329	46 533	400	705
Digital albums	754 754	869 628	31 038	36 475
Digital Track	18 440 641	13 458 541	39 198	43 595
Digital other ³	111 069 533	256 700 894	49 229	51 032
Ringtunes single	241 742	394 786	1 947	1 357
Mobil other	174 154	3 611 149	3 627	3 893
Other	998	904	35	39

Note: The members of IFPI Denmark are Danish and foreign record companies. The turnover of these record companies account for more than 95 per cent of the total sale in Denmark.

Source: IFPI Denmark

www.ifpi.dk

¹ Incl. Greenland and The Faeroe Islands. ² Double-albums and similar products containing more than one phonogram in one product. ³ The majority is accounted by subscription based sales.

	Collections		Material received under delivery schemes	Reading rooms		Long-distance loans Circulation	Staff paid out of own budget
	Total shelf capacity	Size at the end of the year		Visitors	Circulation		
	thousand metres			thousands			
Archives total	762	413	6 959	37	132	15 632	204
Danish National Archives	538	198	4 937	13	53	5 404	102
Provincial archives in:							
Copenhagen	50	49	-	8	17	1 420	12
Odense	24	19	47	5	8	1 434	15
Viborg	63	71	1 006	7	43	5 381	39
Aabenraa	17	19	439	2	4	858	11
Industrial Archives	70	57	530	2	7	1 135	14
Danish Data Archives	-	-	-	-	-	-	11

Source: Danish National Archives

www.sa.dk

Table 96 The Danish Arts Foundation. 2009

	3-year scholarships	Lump sum grants	Competitions and prizes	Purchases	Other grants	Total
DKK thousands						
Total	28 310	39 620	1 885	4 475	22 249	96 539
Visual arts	12 770	2 568	1 105	3 640	15 542	35 625
Literature	5 880	9 302	600	-	-99	15 683
Contemporary music	840	3 761	180	-	601	5 382
Classical music	840	1 434	-	-	3 004	5 278
Common music	840	1 160	-	-	612	2 612
Applied arts and designing	3 360	8 828	-	835	2 155	15 178
Architecture	2 940	6 530	-	-	-30	9 440
Film and theatre	840	6 037	-	-	464	7 341

Source: Annual report of the Danish Arts Foundation

Table 97 Libraries. 2009

	Full-time staff at end of year		Expenditure (Accounts figures)		Books, periodicals and other media	
	Total	Of whom librarians	Total	Of which salaries	Stock at the end of the year	Circulation during the year
	number		DKK mio.		thousands units	
Public libraries, total	4 597	2 203	2 886	1 802	24 070	76 857
Central libraries	338	730	876	528	6 995	26 682
Other full-time libraries	4 259	1 473	2 010	1 274	17 075	50 175
School libraries, total	3 042	2 449	38 826	24 108
Research libraries, total	1 598	585	1 030	577	35 265¹	9 995
The Royal Library, Copenhagen	429	86	233	146	16 030	1 448
National libraries	243	62	165	82	4 755	1 180
University libraries and libraries at institutes of higher education	618	283	493 ²	264 ²	10 315	4 835
Other libraries at institutes of higher education	144	63	38 ²	18 ²	753	367
Libraries at institutes	41	26	3 412	238
Special libraries	164	91	60	41	...	1 927

¹ Excl. special libraries. ² Figures are subject to considerable changes, compared to the previous year, due to the large number of mergers.

Source: Danish National Library Authority and information from the Ministry of Education (school libraries)

www.bibliotekogmedier.dk

Table 98 Public libraries: lending of books. 2009

	Places of service open to the public	Stock			Lendings		
		Books per capita	Books per adult (14 years+)	Books per child (0-13 years)	Books per capita	Books per adult (14 years+)	Books per child (0-13 years)
Public libraries	499	4.34	3.60	8.02	13.88	10.97	28.30
Region Hovedstaden	119	4.58	3.84	8.38	16.37	13.10	33.01
Region Sjælland	87	4.56	3.73	8.68	11.63	9.03	24.51
Region Syddanmark	119	4.58	3.84	8.22	12.40	9.65	25.95
Region Midtjylland	110	3.96	3.27	7.20	13.95	11.00	27.90
Region Nordjylland	64	3.70	2.96	7.48	12.77	10.20	26.04

Source: Danish Agency for Libraries and Media

Table 99 Public libraries: lending of other media. 2009

	Places of service open to the public	Stock			Lendings		
		Books per capita	Books per adult (14 years+)	Books per child (0-13 years)	Books per capita	Books per adult (14 years+)	Books per child (0-13 years)
Public libraries	499	0.65	0.63	0.77	3.42	2.83	6.40
Region Hovedstaden	119	0.74	0.72	0.83	4.36	3.80	7.18
Region Sjælland	87	0.64	0.62	1.75	2.69	2.17	5.47
Region Syddanmark	119	0.66	0.64	0.75	3.14	2.56	5.98
Region Midtjylland	110	0.61	0.58	1.73	3.74	3.12	6.65
Region Nordjylland	64	0.52	0.47	0.76	3.19	2.50	6.76

Note: The term "other media" includes the following categories: recordings of music, film, talking books and multimedia materials. Consequently, these categories also include videotapes, CD-Rom, music CDs and DVDs.

Source: Danish Agency for Libraries and Media

Table 100 Admissions to museums

	2008	2009		2008	2009
	— thousands —			— thousands —	
Total number of museums	266	249	The Viking Harbour of Bork	46	47
Museums under the National Museum	7	7	Spøttrup Castle museum	45	42
Cultural historical museums	187	170	Danish Museum of Electricity	41	44
Art museums	54	54	Historical Centre Dybbøl Banke	41	46
Natural science museums	6	6	Women's Museum in Denmark	41	40
Other museums	12	12	The Museum of Denmark Exhibition Complex	37	32
			Maritime Museum, Marstal	37	88
Admissions	— thousands —		The Position of Tirpitz	36	33
			The Museum of Copenhagen	35	43
a. Museums under the National Museum total	817	917	The Industrial Museum, Horsens	35	35
Of which:			Danish Maritime Museum, Kronborg	35	34
The National Museum, Prince's Palais	373	397	City Museum, Århus	33	35
Industrial Works of Brede/Open Air Museum, Lyngby	288	358	Gavnø Castle	33	63
The Museum of Danish Resistance	67	60	The Royal Library	33	31
Frøsløvejrens Museum	37	45	Morslands Historical culture Museum	32	30
			Lindholm Burial Mound	32	31
b. Cultural historical museums, total	6 231	6 496	Karen Blixen-Museum	32	30
Of which:					
Den Gamle By	333	362	c. Art museums, total	2 885	2 765
The Rosenborg Collection	211	216	Of which:		
Egeskov Castle	207	209	Louisiana Museum	559	475
Kronborg Castle	190	204	The Danish National Gallery	313	393
The Museum of nation. history at Frederiksborg Castle	165	160	New Carlsberg Glyptotek		
The Frigate Jutland	151	131		275	253
Fisheries and Maritime Museum	151	139	ARoS	215	201
PTT museum of Denmark	151	151	Arken	202	145
Carlsberg visit centre	135	125	Skagen Museum	163	121
The Viking Ship Museum	135	122	The Art Museum Trapholt	66	65
Moesgård Museum	127	140	Danish Museum of Decorative Art	63	68
Workers Museum Copenhagen	101	104	Thorvaldsen Museum	60	53
Danish Agricultural Museum Gl. Estrup	95	96	Art, Museum of Modern Art, Aalborg	53	78
Jutland manor house Museum, Gl. Estrup	95	95	The Art Museum Ordrupgaard	46	63
The Funen Village	95	97	Bornholm Art Museum	46	40
Danish film Institute/ Museum and Cinematic	93	104	Randers Art Museum	46	32
Museum at Koldinghus	93	99	Fuglsang Art Museum	45	26
The Danish Railway Museum	92	86	The Glass houses, Ebeltoft	43	40
H.C. Andersens House	88	85	Johannes Larsen Museum	40	41
Hjerl Hedes Open Air Museum	77	77	The Museum of Photo Art	39	38
Museum of Langeland	71	65	Silkeborg Art Museum	35	46
City museum Moentergaarden	67	67	Michael and Anna Anchers House and Saxilds Gaard	30	29
The museum the Viking of Ribe	64	57			
Hanstholm Museum	62	59	d. Natural science museums, total	284	308
Valdemar Castle	62	59	Of which:		
Andelslandsbyen Nyvang	59	60	Zoological Museum of the University	103	130
Lemvig Museum	59	56	Naturama	64	66
Tøjhusmuseet (Danish Defence Museum)	57	54	Natural history Museum	50	50
Museum at Sønderborg Castle	57	57			
Fur Museum ¹	52	58	e. Other Museum, total	279	208
Fiskeriets Hus	48	42	Of which:		
Kulturhistorisk museum Randers	48	50	Danfoss Univers A/S	195	131
Amalienborg Museet, Christian VIII's Palæ	48	68	Voergård Castle	36	32
Danmarks Tekniske museum	46	46	a-e Total admission²	10 497	10 694

Note: Figures for total visitors only include museums for which the number of visitors has been stated for both years. Double museums include both a cultural-historical department and an art department, and it is not possible to divide the number of visitors between the two departments. The table includes museums with more than 30,000 visitors in 2009 only.

¹ Include of both a cultural historical exhibition and an art exhibition. ² The further for total number of visitors include visitors to double museums.

www.statbank.dk/mus

Table 101 Admissions to zoological gardens

	2008	2009
Total number of zoological gardens	16	16
	— thousands —	
Admissions total	3 873	3 775
Zoologisk Have	1 394	1 298
Odense Zoo	430	401
Aalborg Zoologiske Have	372	398
Den selvejende institution Givskud Zoo	328	320
Knuthenborg (Hippotigris A/S)	241	228
Nordsø museet	217	209
Kattegatcentrets Driftsfond	187	176
Jyllands Park Zoo Aps	170	171
Danmarks Akvarium	138	144
Ree Park - Ebeltoft Safari	102	136
Skandinavisk Dyrepark A/S	81	73
Fjord- og bæltcentret i Kerteminde	62	60
Øresundsakvariet	51	55
Odsherred Zoo - Dyrepark A/S	47	50
Bornholms Sommerfuglepark & tropeland	31	27
Skærup Zoo	22	29

www.statbank.dk/mus

Table 102 Theatres. 2009/2010

	Number of productions	Number of performances				Audience	
		Total	Of which Danish	New performances		Total	Paid admissions
				Total	Of which Danish		
		number				thousands	
State-subsidized theatres, total	12 680	600	429	403	264	2 240	...
The Royal Theatre, total	709	48	15	34	21	477	439
Plays	402	12	5	11	6	173	155
Operas	154	14	1	9	4	155	148
Ballets and dance	120	21	9	13	11	105	93
Operetta and musical	33	1	-	1	-	44	43
The regional theatres, total	1 976	74	39	71	37	617	529
Theatre cooperation of greater Copenhagen theatre	983	32	22	31	19	382	309
Regional theatres outside Copenhagen	993	42	17	40	18	235	220
Other state-subsidized theatres, total	9 995	478	375	298	206	1 146	...
folketeatret.dk/turne, The Danish National Opera, Peter Schaufuss							
Balletten	402	15	8	15	5	163	...
Local city-theatres	2 867	105	76	73	48	340	...
Local theatres	3 198	157	124	92	59	363	...
Theatres subsidized by the Danish Arts Council	3 528	201	167	118	94	280	...
Non subsidized theatres, total	3 505	202	577	...
Ballet and dance	579	38	97	...
Performance	132	12	13	...
Opera	13	2	3	...
Operetta and musical	257	6	170	...
Plays	1 976	102	212	...
Revue and cabaret	144	5	47	...
Other	404	37	35	...

Note: Theatres' activities are excluding guest performances. The statistics concerns the season, running from 1st July to 30th June.

www.statbank.dk/teat1, [teat2](http://www.statbank.dk/teat2) and [teat3](http://www.statbank.dk/teat3)

Table 103 Sports federations and youth and outdoor activities organizations

	Number of members	
	2009	2010
	— thousands —	
Youth organizations, total¹	85	84
The Danish Scout Association	26	26
Voluntary Christian Boys' and Girls' Association, FDF	24	23
The Green Girl Guides in Denmark	5	5
YMCA Scouts in Denmark	24	24
Danish Baptists' Scout Organisation	1	1
DUI - LEG og VIRKE Children's Organisation	5	5
Sports Federations²		
The Danish Sports Federations	1 647	1 721
Badminton	101	95
Football (DBU)	314	343
Golf	150	158
Gymnastics	112	125
Handball	122	115
Riding	79	74
Sailing	59	58
Swimming	124	137
Tennis	60	62
Other federations	526	554
The Danish Gymnastics and Athletics Federations	1 653	...
Badminton	152	...
The Danish Rifle Federation	145	...
Football	277	...
Gymnastics	317	...
Handball	119	...
Swimming	157	...
Tennis	54	...
Other federations	323	...
Sports for children	8	...
Exercise and leisure	76	...
Continuation schools, etc.	25	...
The Danish Firms' Sports Federations	310	321
Badminton	19	19
Football	34	32
Handball	2	2
Bowling	22	21
Fitness centre	39	37
Keep-fit exercises	8	11
Jogging	27	29
Other sports	159	170
Other outdoor activities organizations		
The Danish Camping Association	153	115
The Danish Cyclist Federation	17	17
The Danish Society for the Conservation of Nature	136	132
The Danish Hunting Federation	94	95
The Danish Garden Society	42	40

¹ Includes members of the uniformed groups under the association for children's and youth organizations. ² Includes active members, the other organizations include associate members too. If a person takes part in more than one sport, the person will usually be counted more than once.

Source: The organizations

Table 104 Attendance at selected sporting events

	Season 2008/2009			Season 2009/2010			Per cent changes in the number of avr. attendance
	Attendance	Matches	Average attendances per match	Attendance	Matches	Average attendances per match	
Football							
Superleague – men	1 744 822	198	8 812	1 645 907	198	8 313	-5.7
1st Division – men	257 309	211	1 219	314 358	240	1 310	7.5
2nd Division – men	153 516	241	637	123 430	240	514	-19.3
Handball							
Handball league – men	309 319	226	1 369	279 025	217	1 286	-6.1
1st Division – men	79 521	194	410	85 479	185	462	12.7
Handball league – women	187 796	162	1 159	169 979	167	1 018	-12.2
1st Division – women	44 515	194	229	36 963	194	191	-16.6
Ice hockey							
Al-Bank league – men	236 312	180	1 313	209 703	162	1 294	-1.4
Play-offs and final games - men	78 376	39	2 010	61 396	37	1 659	-17.5
Season, total ¹ – men	314 688	219	1 437	271 099	199	1 362	-5.2
Badminton²							
Denmark Open (Århus)	5 600	5 770
Copenhagen Masters (Cph.)	3 518	3 574
DM (Aalborg)	4 120	4 226
Hold-finalen (Guldmatchen - Cph.)	2 148	2 165
Basketball							
Basketball league – men	60 844	130	468	79 361	154	515	10.0

¹ Cup ties are excluded. ² Only larger tournaments, includes badminton for both men and women.

Source: Danish Football Association, Danish Handball Association, Danish Ice Hockey Union, Danish Badminton Federation, Danish Basketball Federation.

Table 105 Public expenditure on individual cultural areas. 2009

	Constructive and creative activities			Preservation and dissemination of the cultural heritage			Further and higher education ²	Other cultural expenditure ²	Culture total	
	Grants to artists ¹	Music	Theatre	Films	Libraries	Archives etc.				Museums
DKK mio.										
Total expenditure	770	924	1 371	404	3 414	191	1 483	920	1 783	11 260
Central government	770	276	1 129	386	781	191	962	920	916	6 331
Municipalities	...	648	242	18	2 633	...	521	...	867	4 929
DKK per citizen										
Total expenditure	140	168	249	73	619	35	269	167	324	2 043
Central government	140	50	205	70	142	35	175	167	166	1 149
Municipalities	...	118	44	3	478	...	95	...	157	894

Note: Public expenditure includes gross operating expenditure less any income and reimbursements from central government.

Source: National accounts and municipal accounts

¹ Including authors etc. ² Including National Accounts account number 21.11 excl. 21.11.71-79, 21.81 (Radio and TV) and the Ministry of Cultural Affairs' share of pools and lottery money for general cultural purposes. Municipal expenditure includes account number 3.64 (other cultural tasks) in municipal accounts.