

**State of Israel**  
**Ministry of Social Affairs and Services**  
**Research, Planning and Training Division**



# **Budget, Indicators and Data sources**

**Miri Bensimhoun, Yekutiel Sabah**

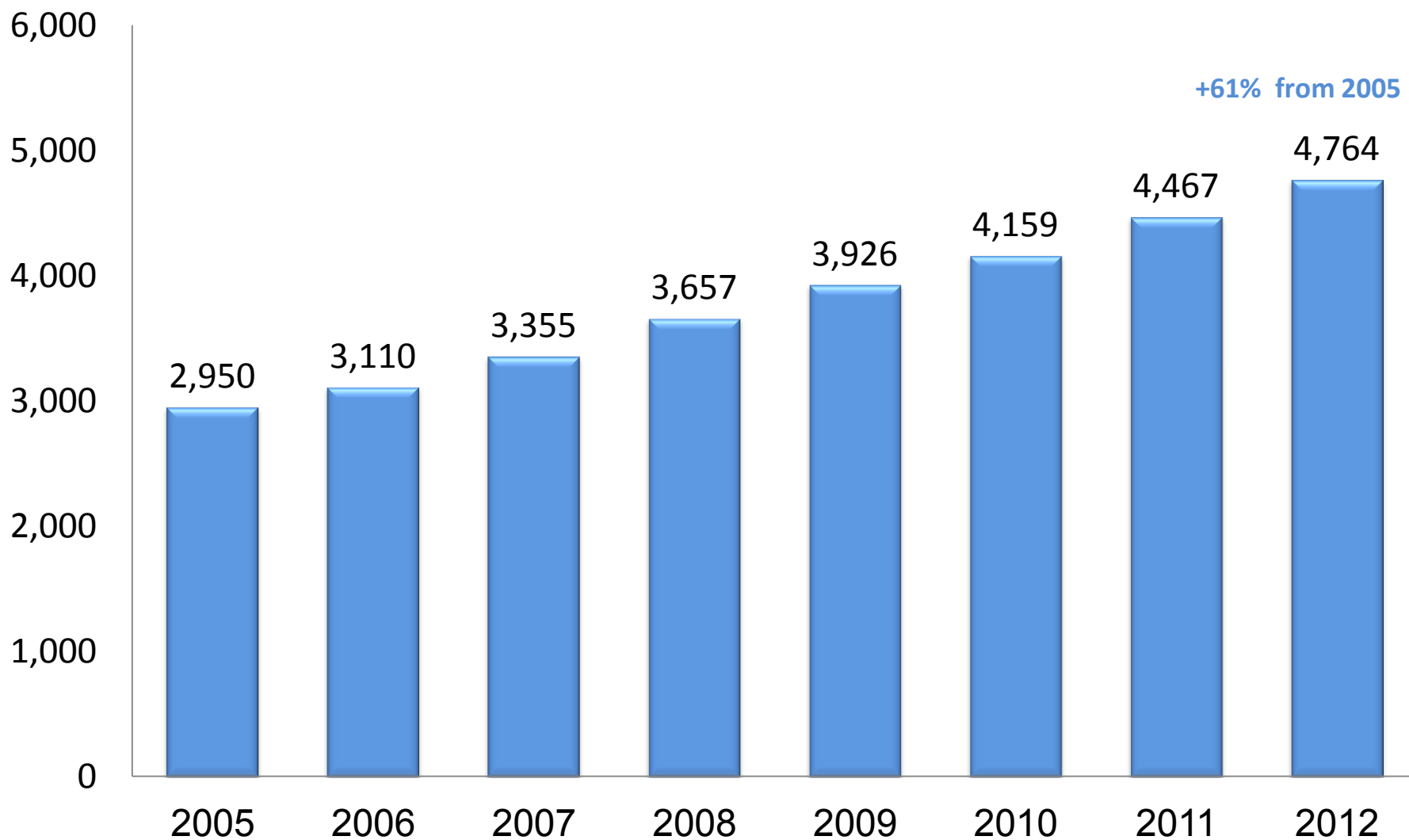
**Division of Research, Planning and Training**

**Twinning Project 13.01.14**

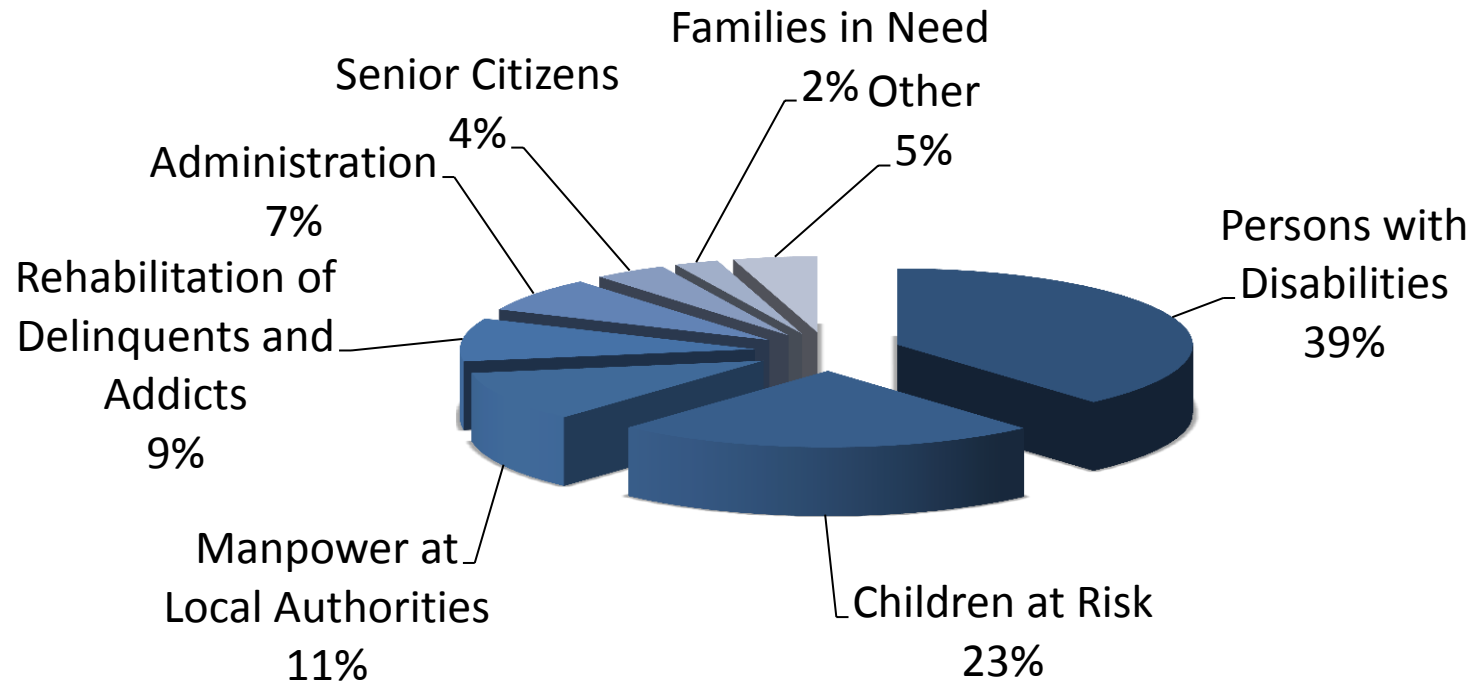
# **Services provided to an array of population groups including the weakest and most vulnerable segments**

- Children at risk
- Persons with intellectual or physical disabilities
- Dependent elderly
- Delinquent youth
- Families in distress
- People with issues of substance abuse

## Ministry of Social Affairs and Services Budget (in millions)



## Ministry of Socail Affairs and Services' Budget, by areas of spending



## Budget Allocated to Local Authorities (4,008 Millions) (about 85% from total budget)

	Ministry Allocation	Local Authorities Allocation	Total Allocation
Total	4,008	1,170	5,178
Persons with intellectual disabilities	1,316	383	1,699
Children at Risk	969	301	1,270
Manpower	509	163	672
Persons with physical disabilities	454	148	602
Senior Citizens	292	83	375
Rehabilitation of Delinquents and Addicts	251	27	279
Services for immigrants	110	33	143
Families in Need	92	28	121
Activity in community	14	4	18

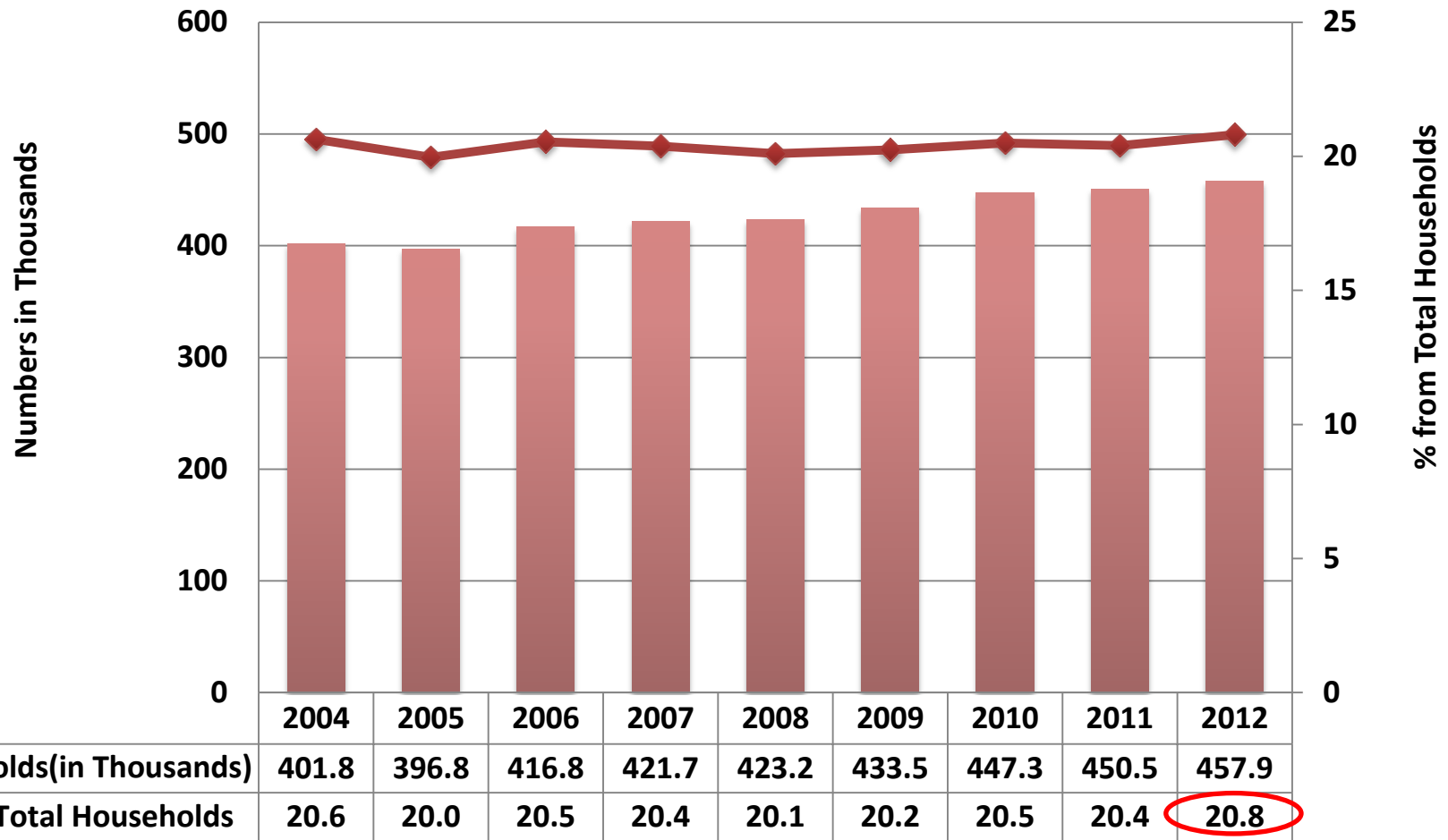
As a rule, the budget for the services provided by the Ministry (75%) and the Local Authorities (25%)

# (Non Profit Organizations (NGO's

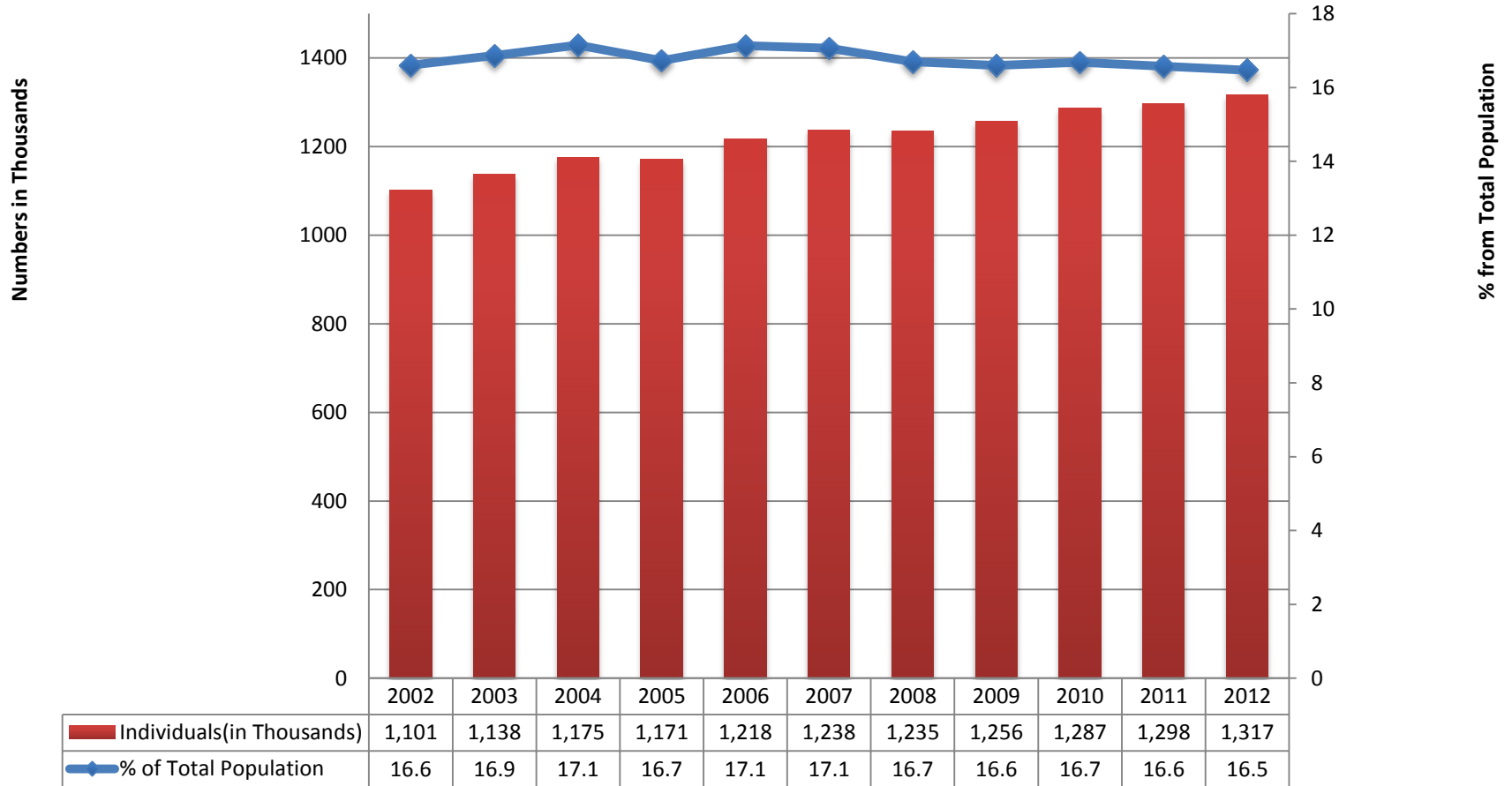
About 40% of the budget is transferred to NGO's:

- Procurement of services: 649 NGO's (1,935 millions)
- Supporting: 134 NGO's (16 millions)

## Households Assisted by Social Services Departments (SSD's)

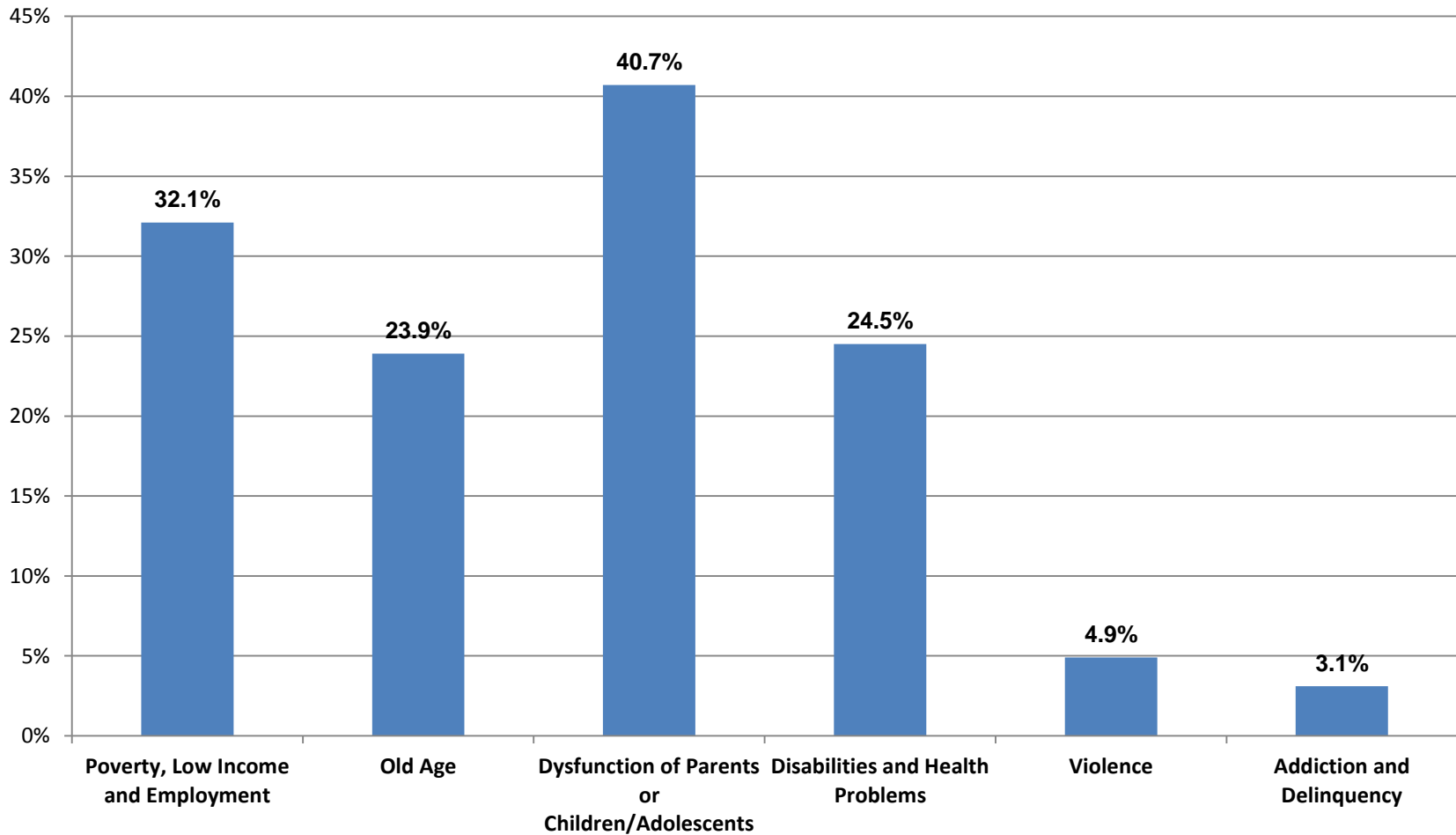


# Individuals Assisted by Social Services Departments (SSD's)

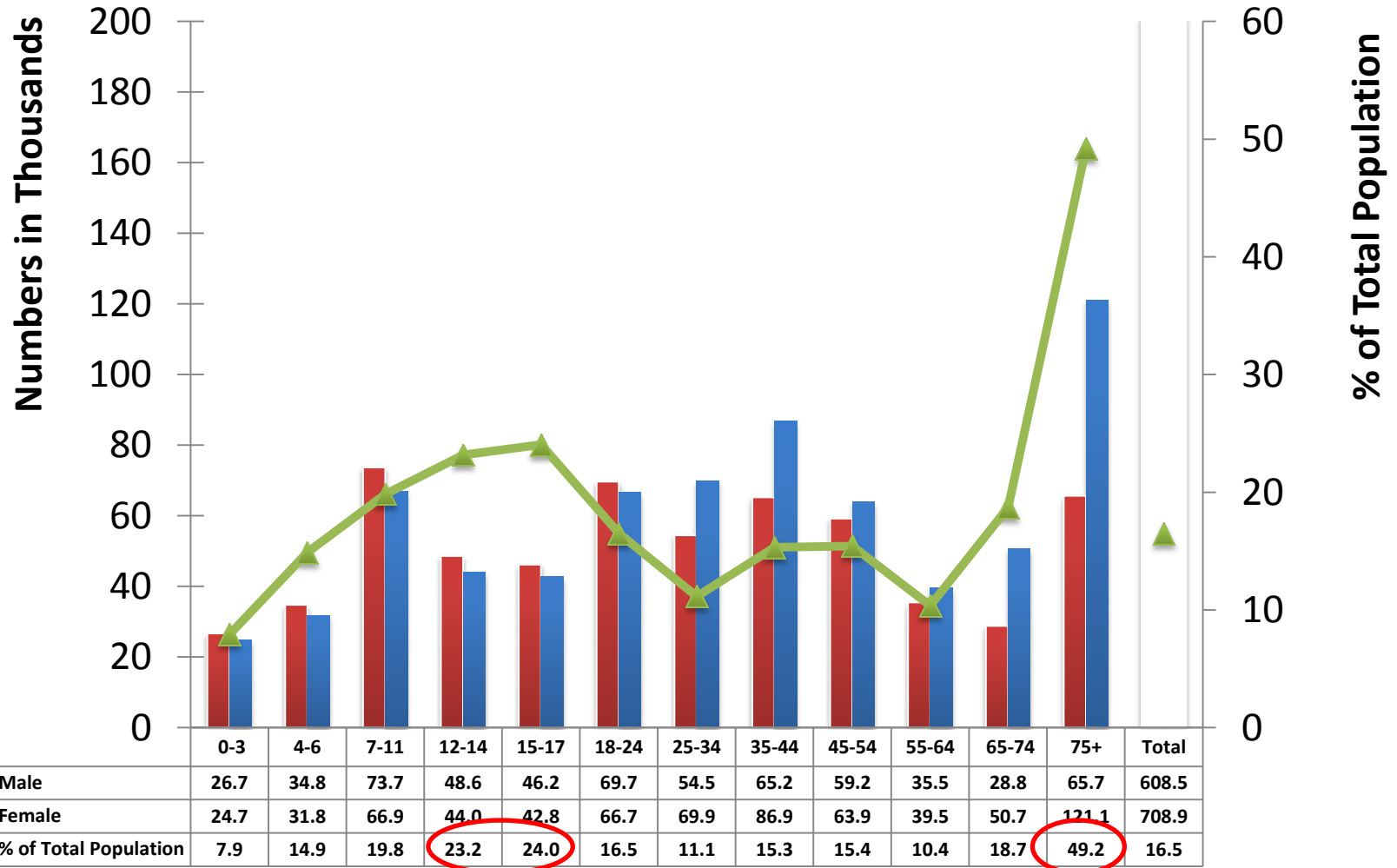




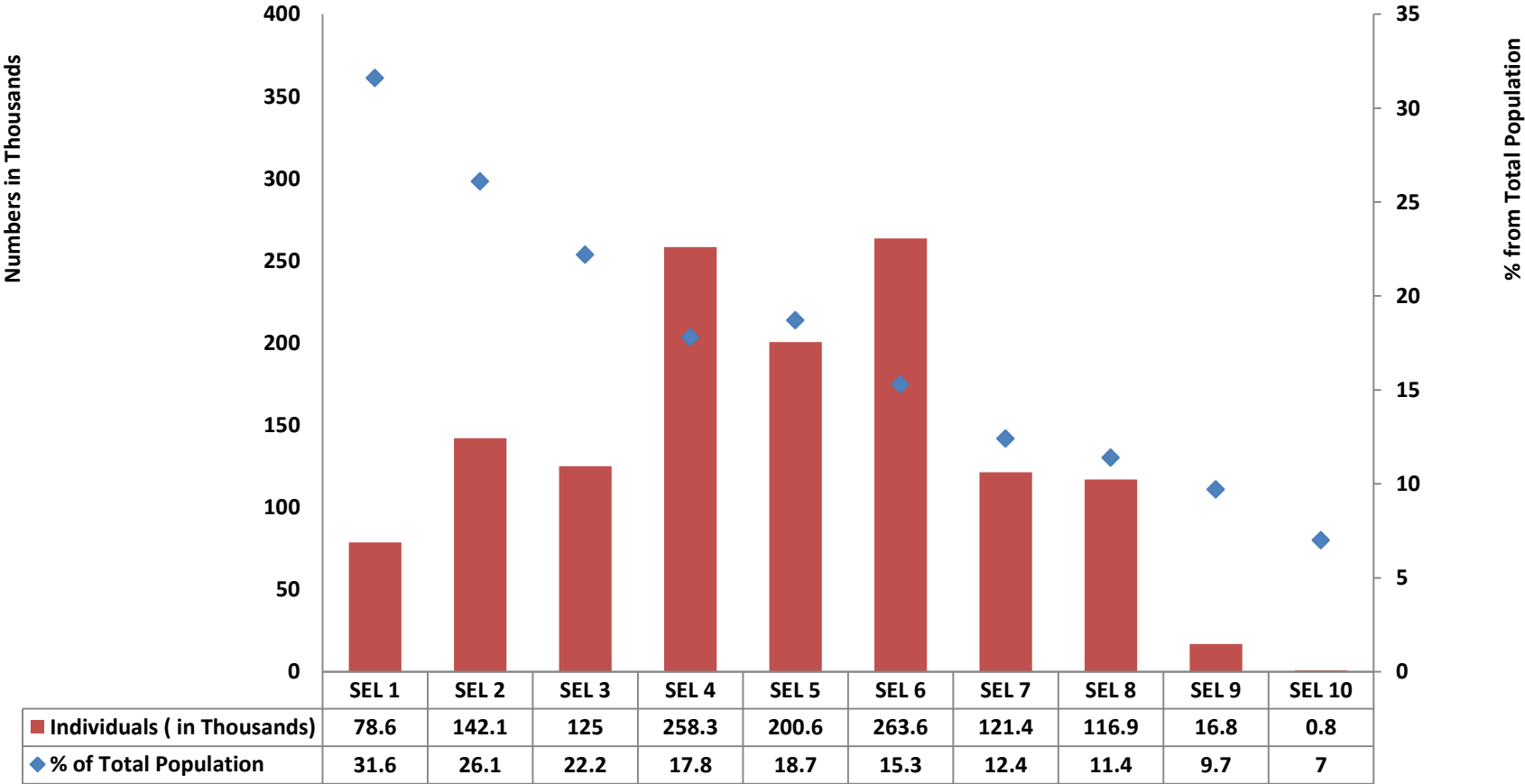
## Problems and Needs of Assisted Individuals by SSD's



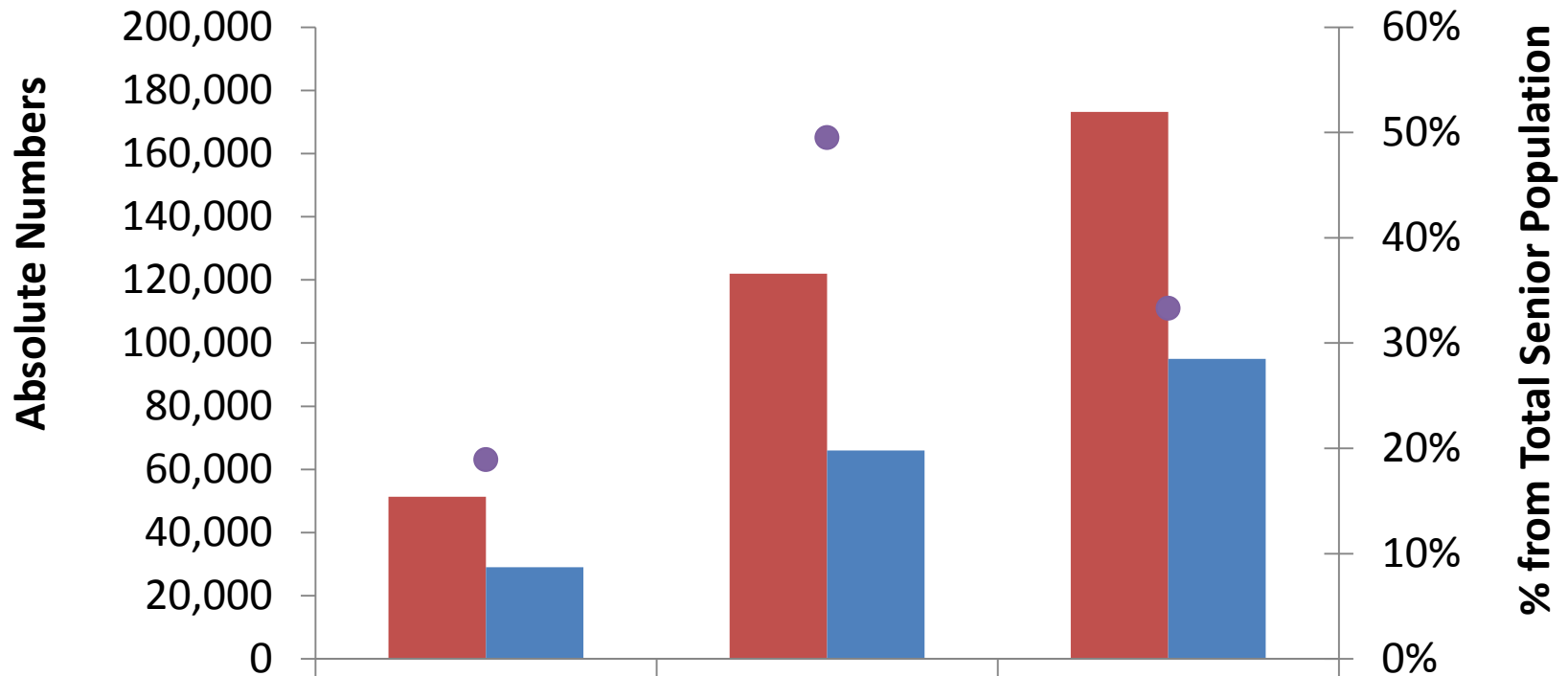
# Individuals Assisted by SSD's, by Age and Gender



# Individuals Assisted by SSD's by Socio- Economic Level (SEL) of the Local Authority

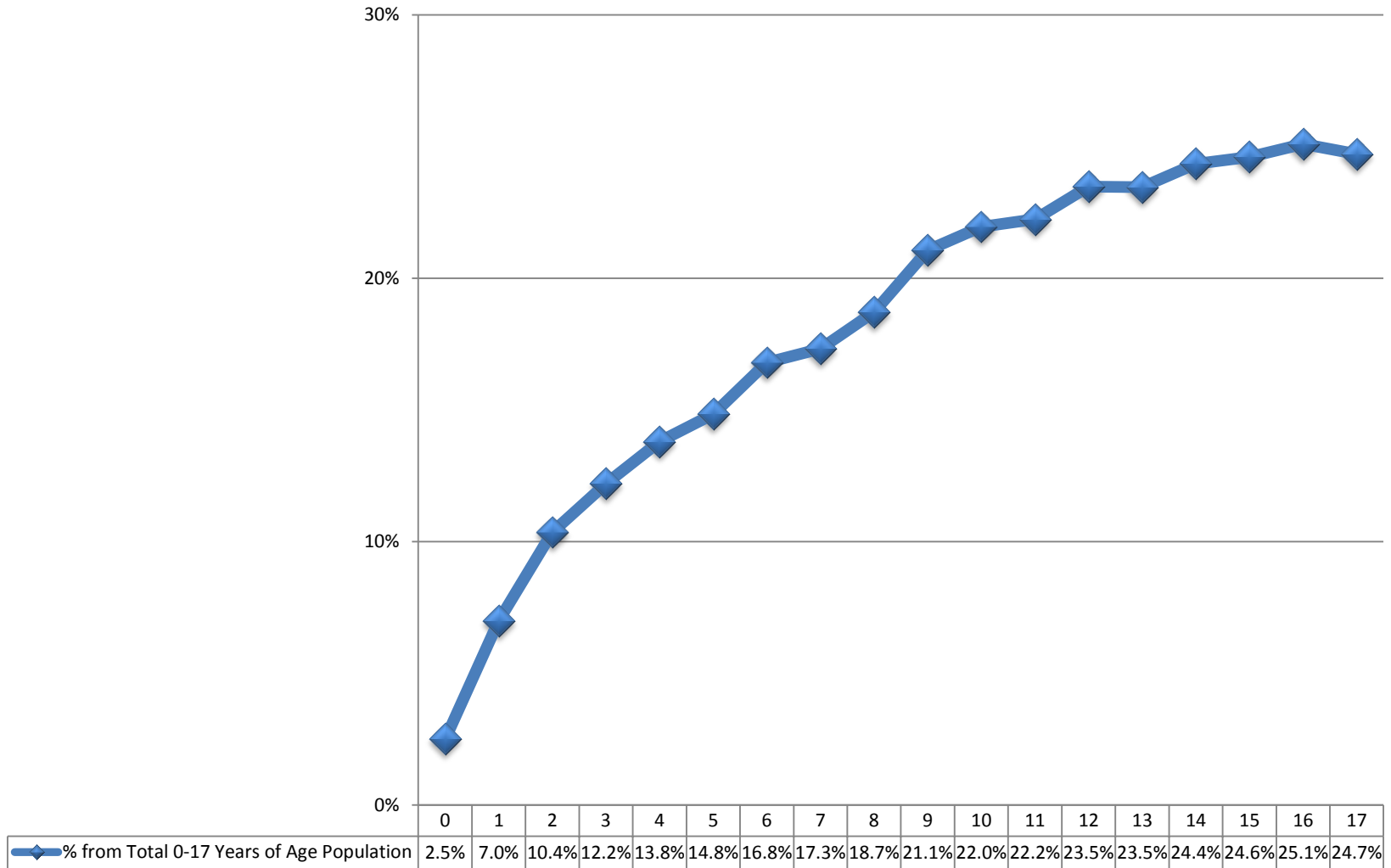


## Senior Citizens Assisted by SSD's, by Age and Gender

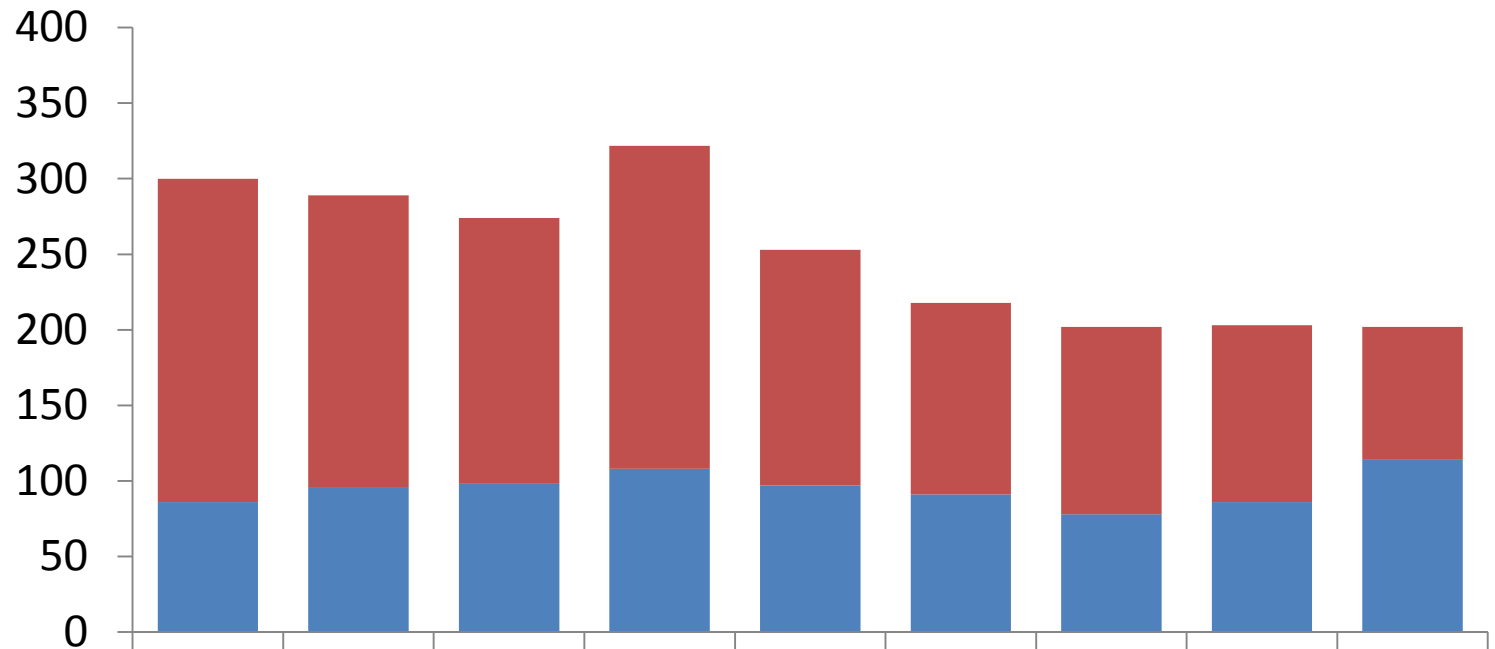


Women	51,296	121,951	173,247
Men	29,035	66,011	95,046
% from Total Senior Population	18.9%	49.5%	33.3%

## Children Assisted by SSD's, by Age

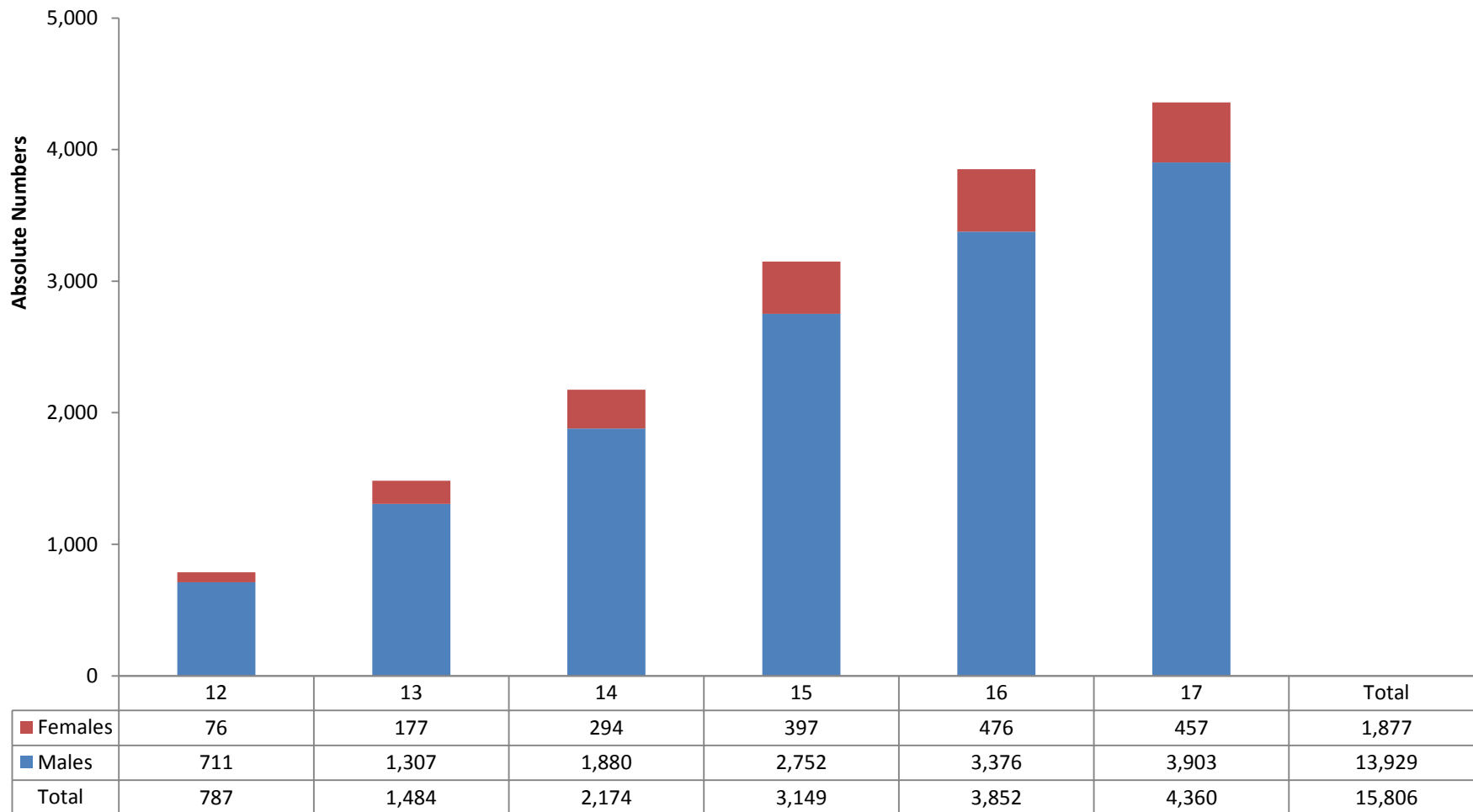


## Adopted Children

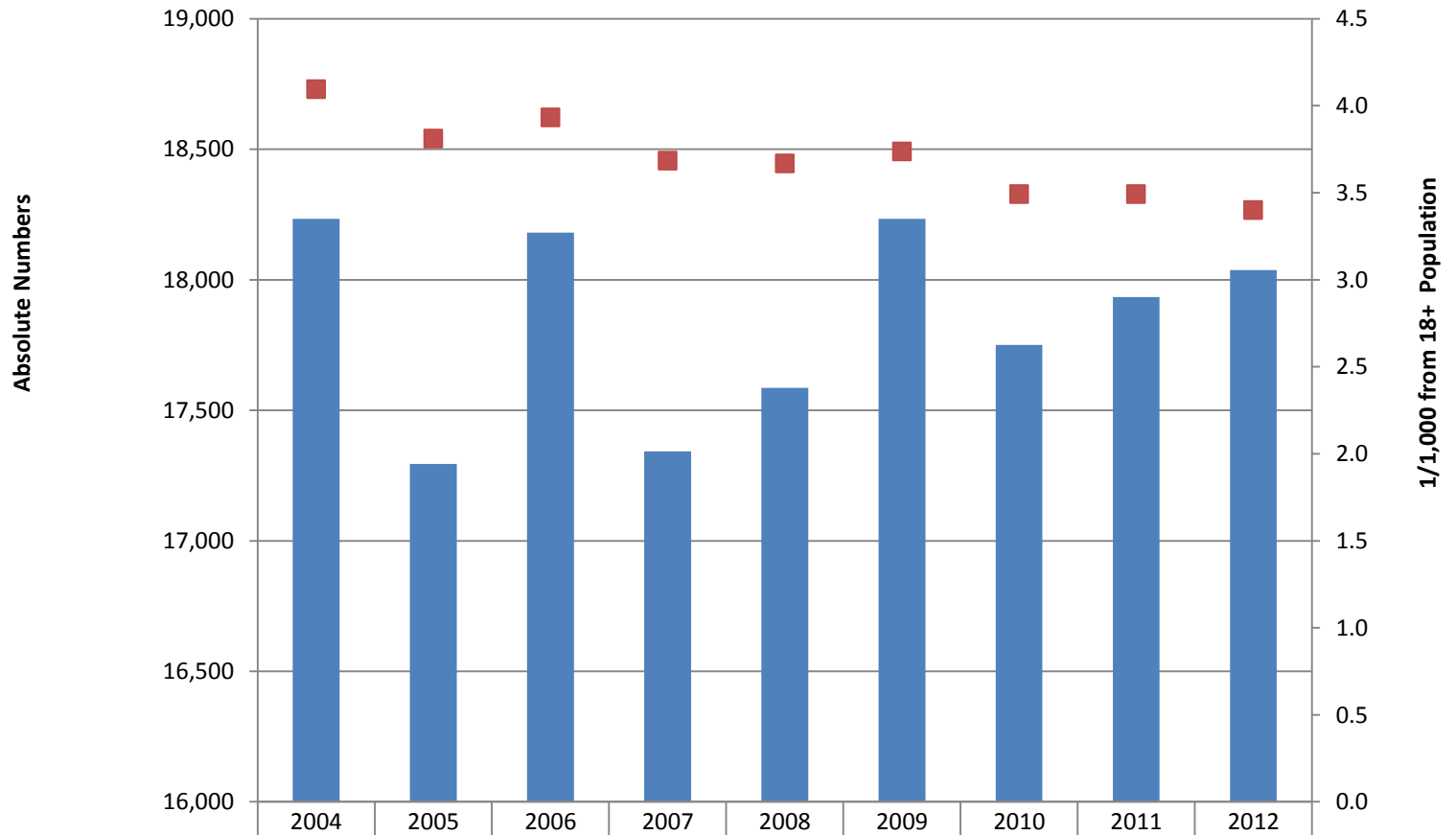


	2004	2005	2006	2007	2008	2009	2010	2011	2012
Total	300	289	274	322	253	218	202	203	202
International Adoption	214	193	176	214	156	127	124	117	88
Israelis	86	96	98	108	97	91	78	86	114

# Juvenile Delinquents under Probation, by Age and Gender



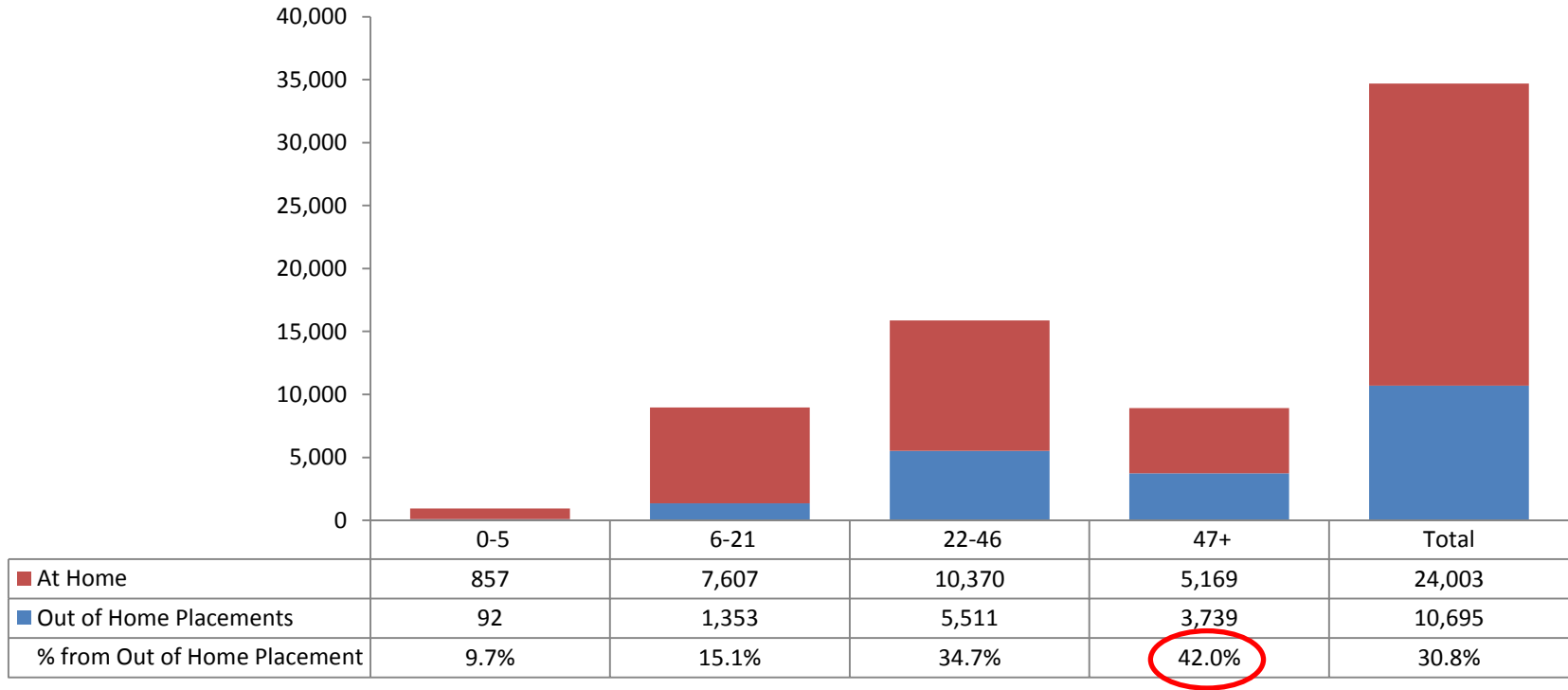
# Adult Delinquents under Probation



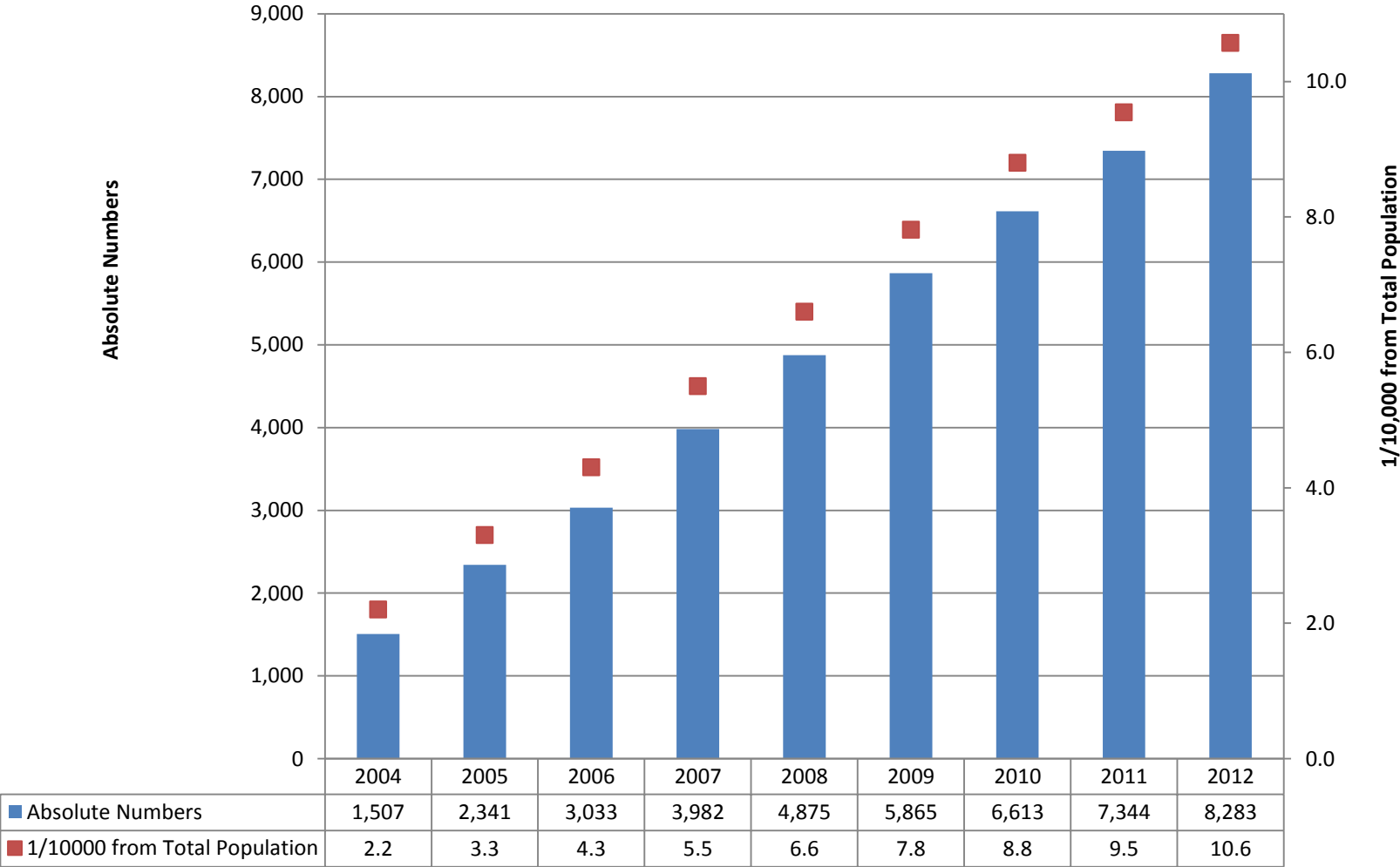
■ Absolute Numbers	2004	2005	2006	2007	2008	2009	2010	2011	2012
	18,233	17,295	18,181	17,343	17,586	18,233	17,750	17,934	18,037
■ 1/1,000 from Total Population	4.1	3.8	3.9	3.7	3.7	3.7	3.5	3.5	3.4



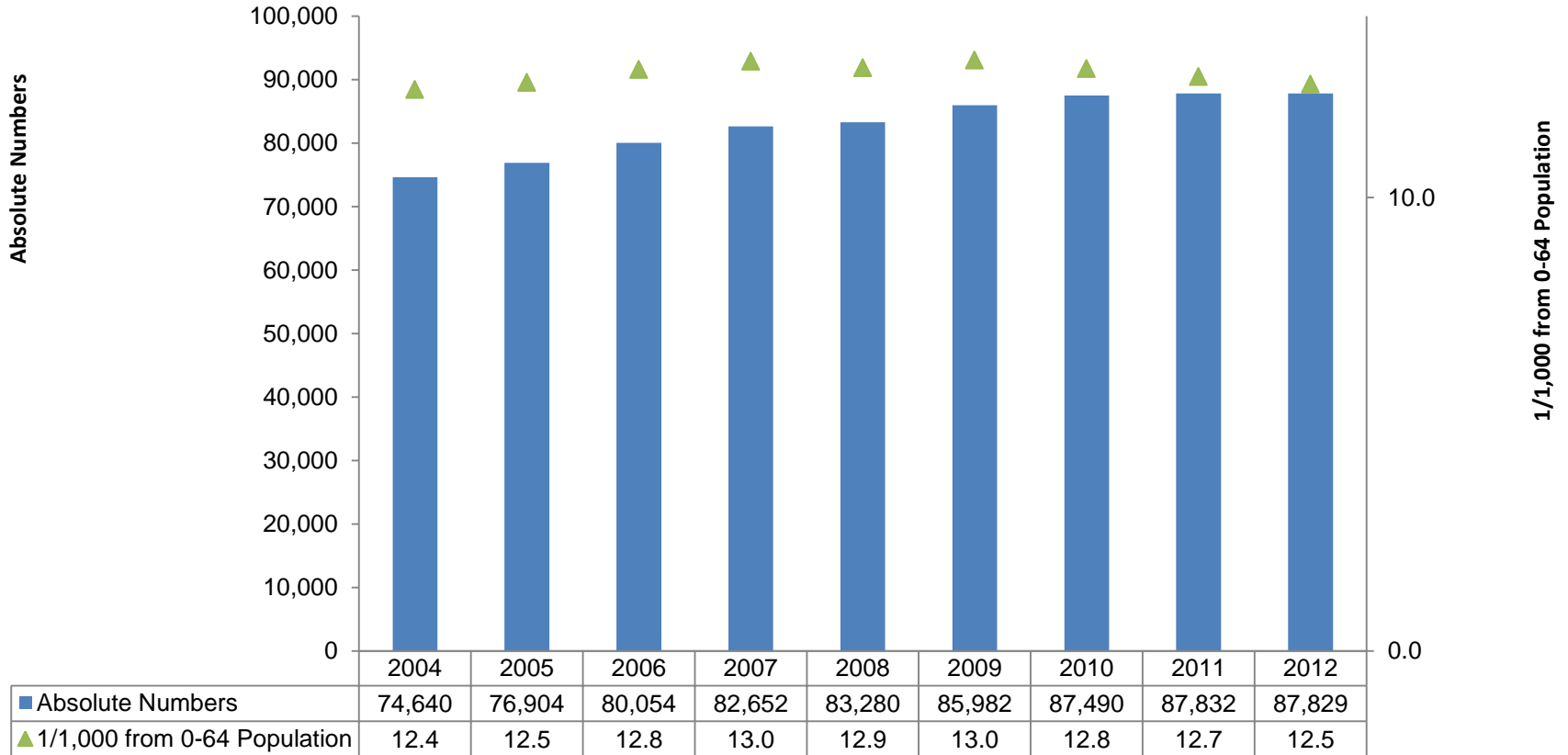
# Persons with Intellectual Disabilities, by Housing Arrangement and Age Group



# Persons with Autism Assisted by SSD's



# Persons with Physical Disabilities Assisted by SSD's



# Administrative Data Bases

- Clients characteristic
- Budget and allocation
- Community and out of home placement
- In addition, more than 50 data sources for specific populations or subject

# Disagreement of the definitions

## Examples:

- Children at risk
- Persons with Autism
- Juvenile Delinquents

# Standardization of the definitions

In order to improve data scope and quality of welfare accounts, **the definitions concerning the population in need of welfare services should be standardized**

Thank you

Q

&

A