



Forwarding Armenian Statistics Through Twinning

AM09/ENP-PCA/TP/04

MISSION REPORT

on

EXHAUSTIVENESS OF GDP ESTIMATES

ACTIVITY C.2 DETERMINATION OF PRIORITIES

Mission carried out by

Ms. Annette Thomsen, Statistics Denmark
Ms. Maria Nilsson, Statistics Denmark

Armenia, 26 – 30 September 2011

Version: *Final*

National Statistical Service Republic of Armenia		Statistics Denmark

Authors' names, addresses, e-mails

Annette Thomsen

Deputy Head of Government Finances

Statistics Denmark

Sejrøgade 11

DK 2100 Copenhagen Ø

[E-mail: ath@dst.dk](mailto:ath@dst.dk)

Maria Nilsson

Head of section

Statistics Denmark

Sejrøgade 11

DK 2100 Copenhagen Ø

[E-mail: mnn@dst.dk](mailto:mnn@dst.dk)

Table of contents

1. General comments	4
2. Assessment and results	4
3. Conclusions and recommendations	5
3.1 Summary conclusions	5
3.2 Recommendations	6
4. Actions before next activity (C.3)	7
 <i>Annexes in the report:</i>	
Annex 1. Terms of Reference	9
Annex 2. Programme for the mission 26–30 September 2011	10
Annex 3. Persons met	11
Annex 4. Power point presentation of the Revision2014 Danish Major Revision And implementaion of ESA2010	12
Annex 5. Table 1A	21
Annex 6. Questionnaire for informal sector survey	26

List of Abbreviations

BR	Business Register
ESA	European System of Accounts
GDP	Gross Domestic Product
HBS	Household Budget Survey
NACE	Nomenclature generale des Activitiés économique dans les Communautés Eu- ropéennes (the industry classification of European Union)
NSSRA	National Statistical Service of Republic of Armenia
SNA93	System of National Accounts 1993 (United Nations)
SNA2010	System of National Accounts 2008 (United Nations)
TAE	Tabular Approach of Eurostat

1. General comments

The main purpose of the mission was to evaluate the draft Table 1A, that had been completed by the BC-experts and sent to the MS experts by e-mail before the mission.

On the basis of table 1A there was a good discussion of the adjustments for exhaustiveness according to the types N1-N7 used in the tabular approach. The BC experts clarified questions raised by the MS experts and some clarifying corrections to Table 1A were agreed.

In particular the informal sector survey that took place in 2009/2010 was discussed and the BC experts provided the MS experts with the questionnaire used for the survey and the results of the survey. The results of the survey account for the major part of the exhaustiveness adjustments. The survey is therefore an important building stone for the completion of Table 2A. There was also a first discussion on how to complete Table 2A

The MS experts presented their organisation of the major revision of the national accounts and the implementation of ESA 2010. The presentation was followed by a discussion of some organisational aspects and also the treatment of certain conceptual changes that will take place with the introduction of ESA2010. The presentation was made for the staff of the national accounts and macroeconomic indicators division, government finance statistics division, external trade and balance of payments division and the Ministry of Finance.

The MS Experts would like to express their thanks to all officials and individuals met for the kind support and valuable information, which was received during the stay in Armenia, and which highly facilitated the work.

The views and observations stated in this report are those of the MS Experts, and do not necessarily correspond to the views of Statistics Denmark.

2. Assessment and results

The National Account division of NSSRA had before the mission completed Table 1A Elements of non-exhaustiveness: output Approach for NACE A-P. The table were sent to the MS experts before the mission, and were discussed during the mission. Adjustments are made for all industries NACE A-P, and described in table 1A. In general the informal sector survey is used for adjustments in NACE A, D, F, H, I, K, O. Following remarks and conclusions were made for certain industries:

- NACE A (agriculture): the informal sector survey showed that the input-structure for the informal part was different from the formal part and this is implemented in the calculations. There are no adjustments made for N1, since registration for agriculture is not mandatory, and production for own account is included in N3. Employment data is used for compiling additions to N5
- NACE F (construction): Adjustments are made by using the informal sector survey, labour force survey and household budget survey, and these adjustments also cover own account production. In addition adjustments are made for the hidden economy using employment information.
- NACE G (trade): The informal sector survey is used for exhaustiveness adjustments. Separate adjustments are made for fuel selling points (petrol stations) within non-

financial corporations. These units are registered by the municipalities, but they are only partly included in the business statistics. The information about the number of selling points is collected from the municipalities and the calculation method for N4 is price * quantity. The same method is used for N6 and N7a. A method for adjusting N2 is needed but not yet developed. The adjustment methods for the households are the same as for non-financial corporations.

- NACE J (financial intermediation): Fully covered data are received from the Central Bank and no further adjustments are made. Private money-lenders are assessed not to exist anymore.
- NACE N (health and social work): The adjustments to NACE N are based on a survey conducted in 2003. The adjustment coefficient from 2003 is updated regularly using expert judgements and used together with information from the household budget survey.
- NACE O (Other community, social and personal activities): A survey for NPISH was made in 2001. The adjustment coefficient from 2001 is updated regularly using expert judgement. Other adjustments are made using the informal sector survey.
- NACE P (private households): there are no adjustments made for the NACE P, since the informal part is captured in the compilation of the formal part through the household budget survey.

In addition some changes were agreed and will be incorporated, for example the inclusion of information of adjustments for intermediate consumption in non-financial corporations, minor changes to layout and specification of adjustment method.

3. Conclusions and recommendations

3.1 Summary conclusions

The completion of Table 1A shows that extensive adjustments for exhaustiveness are already made in a systematic and transparent way. The informal sector survey that took place in 2009/2010 is the most important source for adjustment types N1 and N3 and adjustments in agriculture (NACE A), construction (NACE F) and trade (NACE G). The informal sector survey has information on output and intermediate consumption and it also covers own account production.

The informal sector survey serves as a benchmark and is extrapolated using results from the labour force survey. However, the survey took place during the financial crisis, which particularly affected the construction industry, and it may have influenced the results.

Before the next activity C.3 in March 2012, the BC experts will make some minor adjustments to table 1A and finalise the table as agreed during C.2. The BC experts will also complete table 2A, and include a more detailed description of data sources and methods for adjustments, and finally the BC experts will compile table 1B. The MS experts will comment on the compiled tables before the next activity, C.3, and the tables will then be discussed in March 2012. (A more detailed description of the work before the next activity, including deadlines, can be found in section 4.) Activity C.3, will also include two presentations given by the MS experts on the topics “Goods sent abroad for processing” and “Statistics Denmark’s method for classifying government expenditures according to the COFOG classification and NACE”. A programme for the study visit in June 2012 (C.5) will also be discussed during activity C.3.

There are no adjustments for N2 illegal activity. Adjustment methods for N2 will be discussed in connection with activity C.4 which will take place in September 2012. Other possible improvements to the adjustments methods and sources identified in table 2A and 2B will also be discussed in activity C.4, and table 3A and 3B will be compiled in connection with activity C.4. The programme for activity C.4 will be further discussed in activity C.3.

Activity	Timing	Content
C.1	March 2011	Identification of issues.
C.2	Sept. 2011	Determination of priorities.
C.3	March 2012	Implementation assistance. Assistance to implement the tabular approach for the chosen tables and further analysis of possibilities for improvement of the Armenian national accounts. Presentation and discussion of methods used by Statistics Denmark on “Goods sent abroad for processing” and on “Classification of government expenditures according to COFOG and NACE”. Discussion and finalizing of tables 2A and 1B.
C.5	June 2012	Study visit to Statistics Denmark. Discussion of the Danish National Accounts methodology and system of supply and use tables. Connection between quarterly and yearly accounts. Revision policy and coordination with the most important data sources. Update on the progress within the Twinning project, discussions and further recommendations.
C.4	Sept. 2012	Correction methodologies. Further improvements of tables 2A and 2B, and compilation of tables 3A and 3B of the tabular approach.
C.6	Dec. 2012	Review of the implementation of the tabular approach and of other initiatives recommended.

3.2 Recommendations

The informal sector survey is an important source for exhaustiveness adjustments and it is used as a benchmark for extrapolations. The non-observed economy accounts for approximately 25 per cent of GDP of which approximately 11 per cent is related to the informal sector. It could therefore be considered to repeat the survey at certain intervals to take account of any changes in the structure of the economy.

At present there are no adjustments for N2 illegal activities. Sources and methods for the calculation of such estimates should be investigated.

Adjustments for N5 (registered entrepreneur is in administrative register but not included in statistics) are made using information from the municipalities on fuel selling points. It could be considered to investigate whether it is possible to use other similar administrative information for calculations of the informal activity in some industries. For example information on the number of market selling points combined with observed information on turnover and intermediate consumption.

The business register includes corporations and some unincorporated enterprises that are registered. A better coverage of unincorporated enterprises in the business register will allow for these enterprises to be included in the business statistics survey.

In order to get a full picture of the non-exhaustiveness adjustments table 1B *Elements of non-exhaustiveness: Expenditure approach* and 2 B *Exhaustiveness adjustments: Expenditure approach* should also be completed.

4. Actions before next activity (C.3)

The next activity is proposed to take place in the first half of March 2012. For the preparation of this mission it has been agreed that:

1. The BC experts will make the agreed adjustments to Table 1A as soon as possible and no later than 1 December 2011. Table 1A will then be finalised.
2. The BC experts will complete Table 2A for all industries NACE A-P for the next mission. The BC experts will use the Eurostat guidelines for the Tabular approach for the completion of Table 2A. The BC experts will explain the methods and data sources in more detail in the columns "Adjustment name" and "Data sources". If it is more suitable, these explanations can also be made in a separate document. If it is not possible to distinguish between N1 and N3 in Table 2A due to the calculation method, the two adjustment types can be put together.
3. For one industry, NACE G, the BC experts will complete a draft Table 2A no later than 1 December 2011 and send it by e-mail to the MS experts.
4. The MS experts will comment on the draft Table 2A no later than 10 days after it has been received.
5. The BC experts will send the completed table 2A for all industries no later than 10 days before the next mission (C3).
6. The BC experts will work on Table 3A in order to get as far as possible before the next mission.
7. The BC experts will compile table 1B *Elements of Non-Exhaustiveness: Expenditure Approach* as soon as possible and no later than 1 February 2012.
8. The MS experts will comment on the draft Table 1B no later than 10 days after it has been received.
9. The MS experts will prepare a presentation on the new treatment according to ESA2010 (SNA2008) of goods sent abroad for processing and present it at the next mission.
10. The MS experts will prepare a presentation on their method used for classifying government expenditures according to the COFOG classification and NACE and present it at the next mission.

11. The MS experts will assist the BC experts with the functioning of the seasonal adjustment software (Tramo Seats) using the software and data they have received from the BC. The results of the MS experts' work will be discussed at the next mission.

12. Purposes of the next activity (C3):

12.1. An in depth evaluation and discussion of the main findings of the draft Table 2A completed by the BC experts

12.2. Completion of Table 3A.

12.3. Discussion of Table 1B.

12.4. Identification of potential adjustments not yet developed or improvement of existing adjustments. This will form the starting point for planning activity C4, which will take place in September 2012.

12.5. Presentation by the MS experts of the new treatment according to ESA2010 (SNA2008) of goods sent abroad for processing.

12.6. Presentation by the MS experts of their method used for classifying government expenditures according to the COFOG classification and NACE.

12.7. Discussion of the MS experts' work on the functioning of the seasonal adjustment software (Tramo Seats).

12.8. Outline of a programme of the study visit to Statistics Denmark which is scheduled for June 2012.

Annex 1. Terms of Reference

Activity C.2 Determination of priorities

1. Purpose of activity

The purpose of the activity includes an evaluation of the work done and the principles and methods used by BC since activity C.1. The development of tables according to the tabular approach, in particular an evaluation of table 2A, will continue and potential adjustments that have not yet been developed will be identified, work priorities should be determined, and a road map developed.

2. Expected output of the activity

The expected outputs of the activity are:

- An in-depth evaluation of the draft table 1A;
- An evaluation of the principles and methods behind the actual adjustments in table 2A, and identification of possible improvements of existing methods;
- A road map for implementation of the tabular approach developed, outlaying the remainder of the work within component C;
- Presentation of Statistics Denmark's plans concerning implementation of ESA2010;
- A decision on the dates of the next activity, C.3.

3. Project Participants

Ms. Lusya Khachatryan, Head of National Accounts and Macroeconomic Indicators Division (*BC Deputy Component Leader*);

Ms. Susanna Khachatryan, Main Specialist of National Accounts and Macroeconomic Indicators

Ms. Annette Thomsen, Deputy Head of Government Finances Division, Statistics Denmark;

Ms. Maria Nilsson, Junior Adviser, National Accounts Division, Statistics Denmark.

Annex 2. Programme for the mission 26–30 September 2011

Time	Place	Event	Purpose / detail
Monday, 26 Sept. Morning	Congress Hotel	Meeting with RTA	To discuss the programme of the week
Afternoon	NSSRA	Meeting with BC Experts	Current status. Developments since last activity and follow up on the C.1 report.
Tuesday, 27 Sept. Morning	NSSRA	Workshop	Discussion of the different tables of the tabular approach in relation to the National Accounts of Armenia
Afternoon	NSSRA	Meeting with BC Experts	What parts of the tables of the tabular approach should be the main priorities, and what methods should be used for the different tables?
Wednesday, 28 Sept. Morning	NSSRA	Workshop	MS Expert presentation on the implementation of ESA2010
Afternoon	NSSRA	Meeting with BC Experts	Further planning on the use of the tabular approach. Drafting of road map.
Thursday, 29 Sept. Morning	NSSRA	Ad-hoc meetings	Drafting of mission report. Further planning on the use of the tabular approach and drafting of roadmap.
Afternoon	NSSRA	Ad-hoc meetings	Preparation of presentation on conclusions, recommendations and actions to be taken before the next mission. Completion of road map.
Friday, 30 Sept. Morning	NSSRA	Meeting with BC Experts	Presentation and discussion of mission report
Afternoon	NSSRA	Debriefing with BC Project Leader	Conclusions and recommendations. Consequences of decisions for the next mission and implied work programme for BC Experts

Annex 3. Persons met

Stepan Mnatsakanyan, President of NSSRA (BC Project Leader)

Anahit Safyan, Head of International Statistical Cooperation Division,

Lusya Khachatryan, Head of Macroeconomic indicators and National accounts statistics division

Susanna Khachatryan, Main specialist of Macroeconomic indicators and National accounts statistics division

Nadezhda Astvatsaturova, Main specialist of Macroeconomic indicators and National accounts statistics division

Marlena Khachatryan, Leading specialist of Macroeconomic indicators and National accounts statistics division

Naira Baboyan, Specialist of first category of Macroeconomic indicators and National accounts statistics division

Haykush Titizyan, Head of Finance Statistics Division

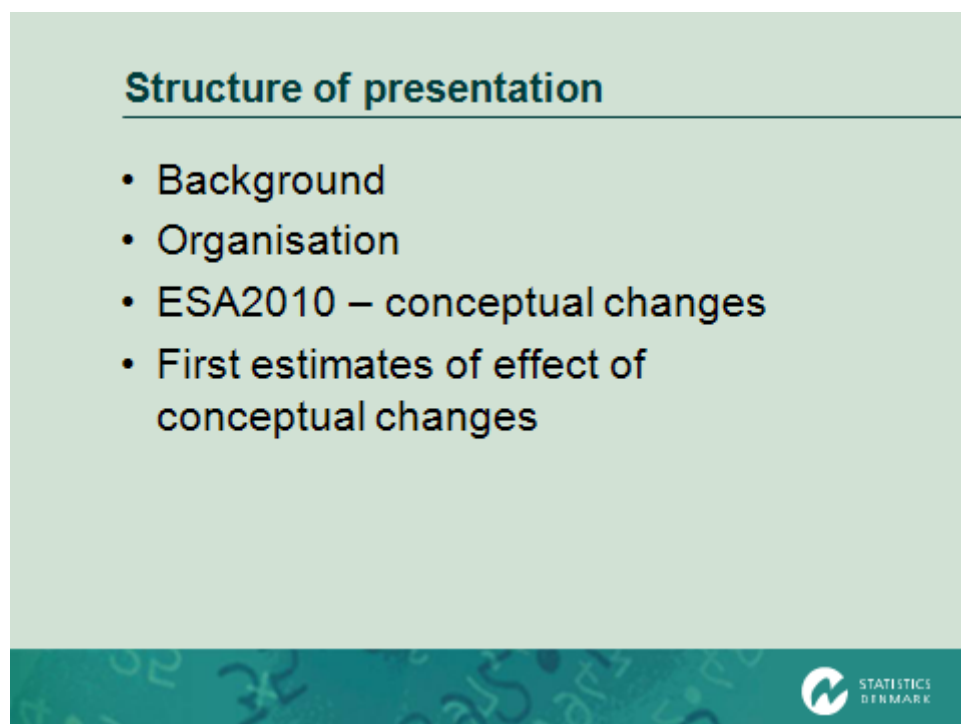
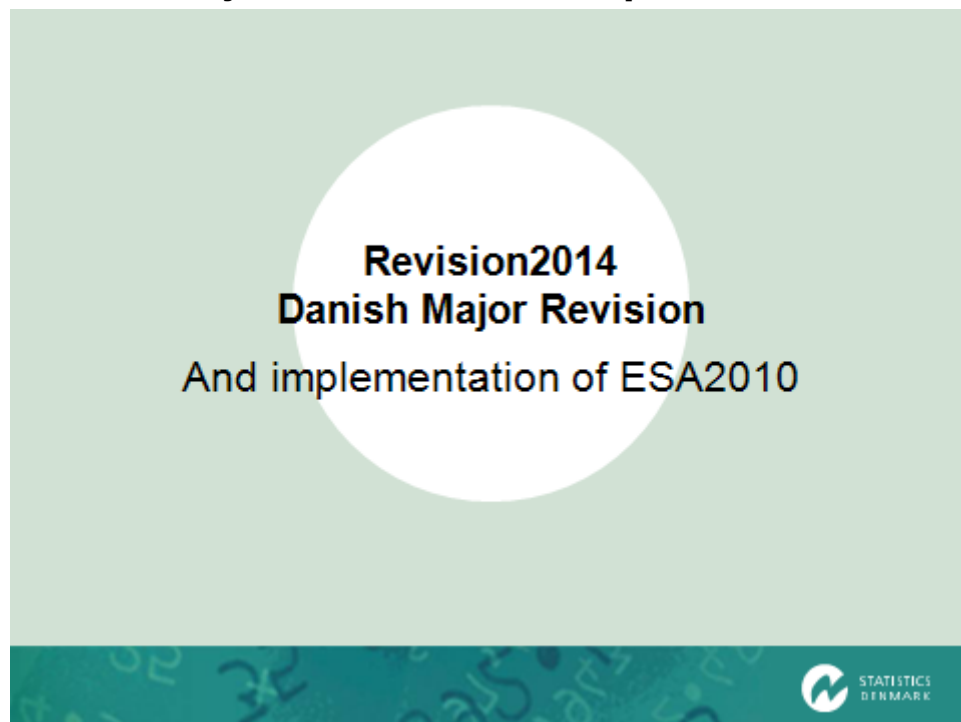
Christine Poghosyan, Main specialist of Finance Statistics Division

Hripsime Jantalyan, Main specialist of Foreign Trade and Balance of Payments Division

Representatives from Ministry of Finance of RA

Liana Harutyunyan

Annex 4. Power point presentation of the Revision2014 Danish Major Revision And implementaion of ESA2010



Background

- **New International guidelines for national accounts (SNA2008)**
 - Adopted by UN Statistical Commission in February 2009
- **New European guidelines for national accounts (ESA2010)**
 - Negotiations for the time being, expected to be adopted end 2012

Background

- All national accounts time series are open for revision
- Not only conceptual changes (introduction of ESA2010)
- Other data- and methodological revisions are also made (according to existing guidelines, ESA95)

Background

- The major revision (Revision2014) has two types of revisions:
 1. Data and methodological changes
 2. Conceptual changes (ESA2010)
- Important to distinguish effects from the two types of changes
 - Consideration for users (national and EU)

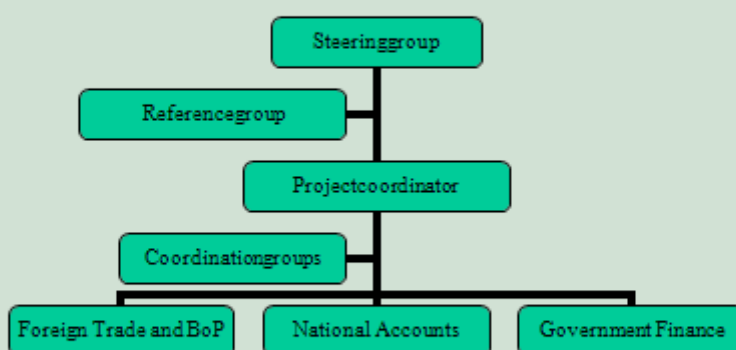
Organisation

- Expected results
 - In September 2014, we can publish revised national accounts according to ESA2010
 - Distinguish between data- and methodological and conceptual changes for at least one year (2008)
 - Submit national accounts data according to ESA2010 to Eurostat and national users
 - Documentation of results
 - Improved and standardised calculation systems

Organisation

- The revision is organised as a project called "**Revision2014**"
- The project is carried out by the National Accounts Division, Government Finance Division and Foreign Trade Division
- There has not been established a separate unit
- Normal production and publication rhythm during the project

Organisation of Revision2014



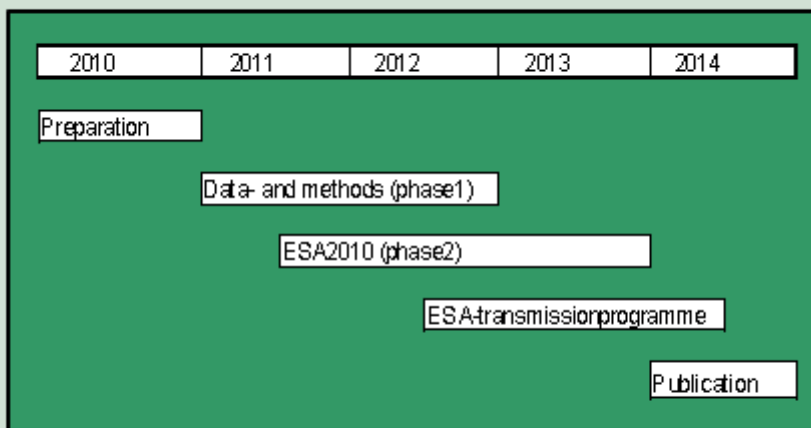
Organisation

- **Role of Steering Group:**
 - Make decisions regarding resources, timetables and methods
 - Meet once every month
- **Role of Reference Group:**
 - Members are not directly involved, but have an interest in following the project
 - Meet two times every year

Organisation

- **Role of project coordinator**
 - Coordinate sub-projects, that affect more than one division
 - Secretary for the Steering Group
- **Role of Coordination Groups**
 - The practical side fx data-exchange, content of revisions, timetables
 - Chaired by project coordinator

Overall planning - Phases



Organisation – Phase 1: Data- and methodological revisions

- 1.1 Identification, delimitation and decision of number of data- and methodological revisions
- 1.2 Execution of revisions
- 1.3 Quality assurance
- 1.4. Evaluation of effect of data- and methodological revisions

Data- and methodological revisions (examples)

- "Simple" calculation errors
- Incorporation of new sources in level and not just growth rates (dwellings)
- Improvement of treatment of foreign affiliates in insurance

Organisation – Phase 2: Conceptual changes (ESA2010)

- 2.1 Identification and delimitation of conceptual changes
- 2.2 Agreement of calculation methods
- 2.3 Incorporation of conceptual changes in the national accounts
- 2.4 Quality assurance
- 2.5 Evaluation of results of total conceptual changes

ESA2010 - Conceptual changes (examples)

- **New guidelines for:**

- Volume indicators for individual government consumption (fx health and education)
- Military expenditures
- Employers' pension schemes
- Goods for processing

ESA2010 – conceptual changes

- **Transmission of data to EU (Eurostat)**

- Earlier and more detailed sector accounts
- Non-profit institutions serving households (NPISH) to be transmitted as a separate sector and not with households

- **Work still going on:**

- Research and development – to be capitalised? (in Denmark, yes)
- FISIM – not yet an agreed method

Estimated effect of ESA2010 on GDP and GNI

	Pct. in 2006	GDP	GNI
(1)	Pension schemes	0,01	0,01
(2)	Research and development	1,80	1,77
(3)	Military expenditure	0,05	0,05
(4)	Other	0,34-0,42	0,36-0,43
(5)	Total	2,20-2,27	2,18-2,26

Annex 5. Table 1A

Country : ARMENIA							
Table 1A. Elements of Non-Exhaustiveness: Output Approach - for Reference Year 2009							
NA components by enterprise sector, NACE group and size		Type of non-exhaustiveness	Adjustment Method				
Detailed breakdown covering all possible elements of non-exhaustiveness		Insert separate lines for types with different adjustment methods	Not needed	Needed but not developed	Developed	Name	Ident number (Table 2A)
1		2	3	4	4b	5	6
Non-financial corporations							
GO	All units	NACE G	N2	1			L62
GO	All units	NACE G	N4		1	Expert judgement, existing survey	L67
GO	All units	NACE G	N6		1	Expert judgement, existing survey	L77
GO	All units	NACE G	N7		1	Expert judgement, existing survey	L82
Households							
GO	Unregistered units	NACE G	N1		1	Special survey of informal economy	L93
IC	Unregistered units	NACE G	N1		1	Special survey of informal economy	L96
GO	Unregistered units	NACE G	N2	1			L99
IC	Unregistered units	NACE G	N2	1			L102
GO	Unregistered units	NACE G	N3		1	Special survey of informal economy	L105
IC	Unregistered units	NACE G	N3		1	Special survey of informal economy	L108
GO	Registered units	NACE G	N5		1	Expert judgement	L111
GO	Registered units	NACE G	N6		1	Existing survey	L114
GO	Registered units	NACE G	N7		1	Expert judgement	L117
GO	Registered units	NACE G	N7		1	Sample survey	L120
Households							
GO	Unregistered units	NACE A	N3		1	Special survey of informal economy, Labour force survey	L129
IC	Unregistered units	NACE A	N3		1	Special survey of informal economy, Labour force survey	L132
GO	Registered units	NACE A	N5		1	Special survey of informal economy, Labour force survey	L135
IC	Registered units	NACE A	N5		1	Special survey of informal economy, Labour force survey	L138
Non-financial corporations							
GO	Registered units	NACE A	N6		1	Labour force survey	L177
Households							
GO	Unregistered units	NACE B	N1		1	Labour force survey, household bujet survey	L192
IC	Unregistered units	NACE B	N1		1	Labour force survey, household bujet survey	L197

Country : ARMENIA							
Table 1A. Elements of Non-Exhaustiveness: Output Approach - for Reference Year 2009							
NA components by enterprise sector, NACE group and size			Type of non-exhaustiveness	Adjustment Method			
Detailed breakdown covering all possible elements of non-exhaustiveness			Insert separate lines for types with different adjustment methods	Not needed	Needed but not developed	Developed	Ident number (Table 2A)
1			2	3	4	4b	5
							6
Non-financial corporations							
GO	Registered units	NACE B	N4			1	Labour force survey
IC	Registered units	NACE B	N4			1	Expert judgement
Non-financial corporations							
GO	Registered units	NACE C	N6			1	Labour force survey
Households							
GO	Unregistered units	NACE D	N1			1	Special survey of informal economy, Labour force survey
IC	Unregistered units	NACE D	N1			1	Special survey of informal economy, Labour force survey
GO	Unregistered units	NACE D	N3			1	Special survey of informal economy, Labour force survey
IC	Unregistered units	NACE D	N3			1	Special survey of informal economy, Labour force survey
GO	Unregistered units	NACE D	N2		1		
IC	Unregistered units	NACE D	N2		1		
Non-financial corporations							
GO	Registered units	NACE D	N6			1	houshold bujet survey
IC	Registered units	NACE D	N6			1	Expert judgement
GO	Registered units	NACE D	N6			1	Labour force survey
IC	Registered units	NACE D	N6			1	Expert judgement
GO	Registered units	NACE D	N2		1		
IC	Registered units	NACE D	N2		1		
Non-financial corporations							
GO	Registered units	NACE E	N6			1	Labour force survey
IC	Registered units	NACE E	N6			1	Expert judgement
GO	Registered units	NACE E	N7 A			1	houshold bujet survey
IC	Registered units	NACE E	N7 A			1	houshold bujet survey
Non-financial corporations							
GO	Registered units	NACE F	N 6			1	Labour force survey
IC	Registered units	NACE F	N 6			1	Expert judgement

Country : ARMENIA							
Table 1A. Elements of Non-Exhaustiveness: Output Approach - for Reference Year 2009							
NA components by enterprise sector, NACE group and size		Type of non-exhaustiveness	Adjustment Method				
Detailed breakdown covering all possible elements of non-exhaustiveness		Insert separate lines for types with different adjustment methods	Not needed	Needed but not developed	Developed	Name	Ident number (Table 2A)
1		2	3	4	4b	5	6
	Households						
GO	Unregistered units	NACE F	N 1		1	Special survey of informal economy, Labour force survey	L377
IC	Unregistered units	NACE F	N 1		1	Special survey of informal economy, Labour force survey	L382
GO	Unregistered units	NACE F	N 3		1	Special survey of informal economy, Labour force survey	L387
IC	Unregistered units	NACE F	N 3		1	Special survey of informal economy, Labour force survey	L392
	Non-financial corporations						
GO	Registered units	NACE F	N 6		1	Labour force survey	L407
IC	Registered units	NACE F	N 6		1	Expert judgement	L412
	Households						
GO	Unregistered units	NACE F	N 1		1	Labour force survey, household budget survey	L422
IC	Unregistered units	NACE F	N 1		1	Labour force survey, household budget survey	L427
GO	Unregistered units	NACE F	N 3		1	Labour force survey, household budget survey	L432
IC	Unregistered units	NACE F	N 3		1	Labour force survey, household budget survey	L437
	Households						
GO	Unregistered units	NACE H	N 1		1	Special survey of informal economy, Labour force survey	L447
IC	Unregistered units	NACE H	N 1		1	Special survey of informal economy, Labour force survey	L452
GO	Unregistered units	NACE H	N 3		1	Special survey of informal economy, Labour force survey	L457
IC	Unregistered units	NACE H	N 3		1	Special survey of informal economy, Labour force survey	L462
	Non-financial corporations						
GO	Registered units	NACE H	N 6		1	Labour force survey	L477
	Non-financial corporations						
GO	Registered units	NACE I	N 6		1	Quantity price method	L492

Country : ARMENIA							
Table 1A. Elements of Non-Exhaustiveness: Output Approach - for Reference Year 2009							
NA components by enterprise sector, NACE group and size			Type of non-exhaustiveness	Adjustment Method			
Detailed breakdown covering all possible elements of non-exhaustiveness			Insert separate lines for types with different adjustment methods	Not needed	Needed but not developed	Developed	Ident number (Table 2A)
1			2	3	4	4b	5
							6
Households							
GO	Unregistered units	NACE I	N 1			1	Quantity price method
GO	Unregistered units	NACE I	N 3			1	Special survey of informal economy
IC	Unregistered units	NACE I	N 3			1	Special survey of informal economy
Non-financial corporations							
GO	Registered units	NACE K	N 6			1	Expert judgement
IC	Registered units	NACE K	N 6			1	Expert judgement
Households							
GO	Unregistered units	NACE K	N 1			1	Quantity price method
IC	Unregistered units	NACE K	N 1			1	Expert judgement
GO	Unregistered units	NACE K	N 3			1	Special survey of informal economy, Labour force survey
IC	Unregistered units	NACE K	N 3			1	Special survey of informal economy, Labour force survey
Households							
GO	Unregistered units	NACE M	N 1			1	Special sample survey
Non-financial corporations							
GO	Registered units	NACE N	N6			1	Special sample survey, Expert judgement
IC	Registered units	NACE N	N6			1	Special sample survey, Expert judgement
Households							
GO	Unregistered units	NACE N	N 1			1	houshold bujet survey, special semle survey
IC	Unregistered units	NACE N	N 1			1	houshold bujet survey, special semle survey
NPISH							
GO	Registered units	NACE O	N 4			1	Special sample survey, Expert judgement
IC	Registered units	NACE O	N 4			1	Special sample survey, Expert judgement

Country : ARMENIA							
Table 1A. Elements of Non-Exhaustiveness: Output Approach - for Reference Year 2009							
NA components by enterprise sector, NACE group and size			Type of non- exhaustive- ness	Adjustment Method			
Detailed breakdown covering all possi- ble elements of non-exhaustiveness			Insert separate lines for types with different adjustment methods	Not nee- ded	Needed but not developed	Develo- ped	Ident number (Table 2A)
1			2	3	4	4b	5
Non-financial corporations							
GO	Registered units	NACE O	N 6			1	Labour force survey
IC	Registered units	NACE O	N 6			1	Labour force survey
Households							
GO	Unregistered units	NACE O	N 1			1	Special survey of informal economy
IC	Unregistered units	NACE O	N 1			1	Special survey of informal economy
GO	Unregistered units	NACE O	N 3			1	Special survey of informal economy
IC	Unregistered units	NACE O	N 3			1	Special survey of informal economy

Annex 6. Questionnaire for informal sector survey

Confidentiality of the provided information is guaranteed by the RA Law "On State Statistics". According to the RA Law "On State Statistics", information received during the interview will be published only in the summarized form for statistical analysis on employment.

National Statistical Service of the Republic of Armenia

*Approved by State Council on Statistics
on 5 Dec 2008, No 43-A decision*

The Informal Sector Survey

Number of Questionnaire

Number of Household

Number of Household Head
(form 1-HH, section A, table 1 or
section D, table 2, column 1)

Survey period month 2009 year

Country
name code

City
name code

Number of Interviewer

Interview Date
I visit I I visit I I I visit IV visit V visit

Name of Interviewer

(signature)

SECTION A. ORGANIZATION OF BUSINESS			
A1. What is the main activity (product made and/or sold/ service provided for pay) of your business? <i>(see I- HH, page 11 column 5)</i>			
	NACE	<input type="text"/> <input type="text"/> <input type="text"/> <input type="text"/> <input type="text"/>	
A2. In what year was this business established?			
			<input type="text"/> <input type="text"/> <input type="text"/> <input type="text"/>
A3. In which type of premises do you conduct this business activity? <i>(see I- HH, page 11 column 7)</i>			
<u>Fixed premises</u>		<u>No fixed premises</u>	
01 At home with no special work space 02 At home with work space inside/attached to the home 03 Business premises with fixed location independent from home 04 Farm or individual agriculture/subsidiary plot 05 Home or workplace of the client 06 Construction site 07 Market, bazaar stall, trade fair 08 Street, pavement or highway with fixed post 09 Employer's home	10 Transport vehicle 11 No fixed location (e.g. mobile, door-to-door, street w/o fixed post) 90 Others (specify) _____		
			<input type="text"/> <input type="text"/>
A4. In addition to the main activity you described above, do you carry out other activities in this place of business?			
1 Yes, specify _____			2 No
NACE		<input type="text"/> <input type="text"/> <input type="text"/> <input type="text"/> <input type="text"/>	
A5. Do you have other places of business where you also conduct your main activity?			
1 Yes		2 No →	
			<input type="checkbox"/>
A5.1. How many other places?			<input type="text"/> <input type="text"/> <input type="text"/>
A6. Is your business registered in any local or national government agency?			
	Yes	No	In the process of being registered
A6.1 Tax agency	1	2	3
A6.2 State redister	1	2	3
A6.3 Social security agency	1	2	3
<input type="checkbox"/> <input type="checkbox"/> <input type="checkbox"/>			
A7. Do you have a bank account in the name of this business?			
1 Yes		2 No	
			<input type="checkbox"/>
A8. What type of bookkeeping and account practices do you keep for this business?			
1 No written records are kept 2 Informal records for personal use 3 Simplified accounting format required for tax payment	4 Detailed formal accounts (balance sheets) 5 Others (specify) _____		
<input type="checkbox"/>			
A9. Do you run a business in other locations which is different from this main activity?			
1 Yes		2 No →	
			<input type="checkbox"/>
A9.1. How many other places?			<input type="text"/> <input type="text"/>

SECTION B. EMPLOYMENT AND COMPENSATION

B1. How many persons, including yourself, worked in your business even for just an hour during the last month of operation?

Total number of employees

--	--

How many paid workers?

--	--

B2. Characteristics of those who worked regularly during the last month your business operated (including yourself)

No.	Name (1)	Sex (2)	Age (yrs) (3)	Status (4)	Contract (5)	Total working hours (6)	Basis of Payment (7)	Wages and salaries (thousand dram) (8)
1								
2								
3								
4								
5								
6								
7								
8								
9								
10								
11								
12								
13								
14								
15								

B2.1 Total for the month (Thousand Dram)

--	--	--	--	--	--	--	--	--	--

Codes for Sex

1 – Male
2 – Female

Codes for Status

1 – Boss/employer
2 – Own-account worker/
Self employed
3 – Wage earner
4 – Paid family worker
5 – Unpaid family worker

Codes for Contract

1 – Written contract without fixed duration
2 – Written contract with fixed duration
3 – Verbal agreement
4 – On trial/probation
5 – No contract

Codes for Basis of Payment

0- In kind, imputed (received as wage/salary)
1- Per piece
2- Per hour
3- Per day
4- Monthly
5- Other salaries/wages (specify)
6- Not salaries/wages
(specify e.g. commission basis)
7- Unpaid farm worker

B3. Allowances and bonuses paid to workers (last month of operation)

B3.1. Total social insurance paid by employer

(Thousand Dram)

--	--	--	--	--	--	--	--

B3.2. Total of all other allowances/bonuses paid by employer

(Thousand Dram)

--	--	--	--	--	--	--	--

B3.3. Total for the month (Total of B3.1 and B3.2)

(Thousand Dram)

--	--	--	--	--	--	--	--

SECTION C. PRODUCTION AND SALE (last month of operation)									
C1. What was the total amount of your gross sale/revenue (including barter)? (Thousand Dram) <div style="display: flex; justify-content: flex-end; gap: 5px;"> <input style="width: 20px; height: 20px; border: 1px solid black;" type="text"/> <input style="width: 20px; height: 20px; border: 1px solid black;" type="text"/> <input style="width: 20px; height: 20px; border: 1px solid black;" type="text"/> <input style="width: 20px; height: 20px; border: 1px solid black;" type="text"/> <input style="width: 20px; height: 20px; border: 1px solid black;" type="text"/> <input style="width: 20px; height: 20px; border: 1px solid black;" type="text"/> <input style="width: 20px; height: 20px; border: 1px solid black;" type="text"/> <input style="width: 20px; height: 20px; border: 1px solid black;" type="text"/> </div>									
C1.1. FOR AGRICULTURE: What was the total amount of your gross sale/ revenue for the last 6 months of operation? (Thousand Dram) <div style="display: flex; justify-content: flex-end; gap: 5px;"> <input style="width: 20px; height: 20px; border: 1px solid black;" type="text"/> <input style="width: 20px; height: 20px; border: 1px solid black;" type="text"/> <input style="width: 20px; height: 20px; border: 1px solid black;" type="text"/> <input style="width: 20px; height: 20px; border: 1px solid black;" type="text"/> <input style="width: 20px; height: 20px; border: 1px solid black;" type="text"/> <input style="width: 20px; height: 20px; border: 1px solid black;" type="text"/> <input style="width: 20px; height: 20px; border: 1px solid black;" type="text"/> <input style="width: 20px; height: 20px; border: 1px solid black;" type="text"/> </div>					C1.2. FOR NON-AGRICULTURE: What was the total amount of your gross sale/ revenue for the last month of operation? (Thousand Dram) <div style="display: flex; justify-content: flex-end; gap: 5px;"> <input style="width: 20px; height: 20px; border: 1px solid black;" type="text"/> <input style="width: 20px; height: 20px; border: 1px solid black;" type="text"/> <input style="width: 20px; height: 20px; border: 1px solid black;" type="text"/> <input style="width: 20px; height: 20px; border: 1px solid black;" type="text"/> <input style="width: 20px; height: 20px; border: 1px solid black;" type="text"/> <input style="width: 20px; height: 20px; border: 1px solid black;" type="text"/> <input style="width: 20px; height: 20px; border: 1px solid black;" type="text"/> <input style="width: 20px; height: 20px; border: 1px solid black;" type="text"/> </div>				
C2. Products sold after transformation									
AGRICULTURE					NON-AGRICULTURE				
N	Kind of product	Qty	Unit	Total value (Thousand Dram)	N	Kind of product	Qty	Unit	Total value (Thousand Dram)
1					1				
2					2				
3					3				
4					4				
5					5				
C2.1. TOTAL (for the last 6 months)					C2.2. TOTAL (for the last month)				
C3. Products sold without transformation (sales of products bought for trade)									
AGRICULTURE					NON-AGRICULTURE				
N	Kind of product	Qty	Unit	Total value (Thousand Dram)	N	Kind of product	Qty	Unit	Total value (Thousand Dram)
1					1				
2					2				
3					3				
4					4				
5					5				
C3.1. TOTAL (for the last 6 months)					C3.2. TOTAL (for the last month)				
C.4 Services offered									
AGRICULTURE					NON-AGRICULTURE				
No.	Type of service			Total value (Thousand Dram)	N o.	Type of service			Total value (Thousand Dram)
1					1				
2					2				
3					3				
4					4				
5					5				
C.4.1. TOTAL (for the last 6 months)					C.4.2. TOTAL (for the last month)				

C.5. Changes in inventories of products (including semi-products) after transformation												
AGRICULTURE					NON-AGRICULTURE							
	Kind of product	Qty	Unit	Total value (Thousand Dram)		Kind of product	Qty	Unit	Total value (Thousand Dram)			
1					1							
2					2							
3					3							
4					4							
5					5							
C.5.1 TOTAL (for the last 6 months)					C.5.1 TOTAL (for the last month)							
C.6. Changes in inventories of products without transformation												
AGRICULTURE					NON-AGRICULTURE							
	Kind of product	Qty	Unit	Total value (Thousand Dram)		Kind of product	Qty	Unit	Total value (Thousand Dram)			
1					1							
2					2							
3					3							
4					4							
5					5							
C.6.1 TOTAL (for the last 6 months)					C.6.1 TOTAL (for the last month)							
C.7 Products (after transformation) used for own consumption												
AGRICULTURE					NON-AGRICULTURE							
	Kind of product	Qty	Unit	Total value (Thousand Dram)		Kind of product	Qty	Unit	Total value (Thousand Dram)			
1					1							
2					2							
3					3							
4					4							
5					5							
C.7.1 TOTAL (for the last 6 months)					C.7.1 TOTAL (for the last month)							
C. 8 How did your business activity fluctuate within the past 12 months?												
Month	M1	M2	M3	M4	M5	M6	M7	M8	M9	M10	M11	M12
Activity												
Activity codes: 0 – No activity 1 – Minimum 2 – Average 3 – Maximum												

C9 Maximum monthly gross sale/revenue, average gross sale/revenue, and minimum monthly gross sale/revenue (the past 12 months)

C9.1. Minimum gross sale/revenue (Thousand Dram)

C9.2. Average gross sale/revenue

C9.3. Maximum gross sale/revenue

C10. Did you employ temporary workers within the past 12 months?

1 Yes 2 No → **Skip to section D** ☐

C10.1 How many temporary workers were there in the month wherein there was a maximum gross sale?

SECTION D. EXPENDITURES ON RAW MATERIALS AND STOCK (last month of operation)

D1. How much did you spend on raw materials used for your business?

AGRICULTURE					NON-AGRICULTURE				
	Kind of product	Qty	Unit	Total value (Thousand Dram)		Kind of product	Qty	Unit	Total value (Thousand Dram)
1					1				
2					2				
3					3				
4					4				
5					5				
D1.1. TOTAL (for the last 6 months)					D1.2. TOTAL (for the last month)				

D2. How much was the purchase cost for products (without transformation) for sale

AGRICULTURE					NON-AGRICULTURE				
	Kind of product	Qty	Unit	Total value (Thousand Dram)		Kind of product	Qty	Unit	Total value (Thousand Dram)
1					1				
2					2				
3					3				
4					4				
5					5				
D2.1. TOTAL (for the last 6 months)					D2.2. TOTAL (for the last month)				

D3. What were your business expenses during the operation?

Expenses/Cost		Value (Thousand Dram)	
		Agriculture (Last 6 months)	Non-agriculture (Last month)
1.	Wages and salaries (from B.2.1)		
2.	Social insurance (from B.3.1)		
3.	Bonuses & allowances (from B.3.2)		

SECTION D. EXPENDITURES ON RAW MATERIALS AND STOCK (last month of operation)		
4. Raw materials (from D1.1, D1.2)		
5. Purchase cost of products sold (from D2.1, D2.2)		
6. Fuel, gasoline & lubricants		
7. Water		
8. Electricity		
9. Rental payments (<i>space, machinery, structures</i>)		
10. Transport services		
11. Post, communication, internet		
12. Other non-industrial services (<i>bank charges excluding interest, professional, business and other service fees, representation and entertainment expense, storage and warehousing fees, stevedoring, forwarding and other freight charges</i>)		
13. Repair & maintenance of facilities & equipment		
14. Other industrial services		
15. Paid interests		
16. Taxes		
17. Insurance		
18. Other charges (specify)		
D3.1 Total for the month	(Thousand Dram)	

SECTION E. CAPITAL EXPENDITURES					
E1. What are the capital assets you used for your business activity during the past 12 months?					
Type	Characteristics (Short Description)	Mode of trans- action	Owner- ship	Date of acquisition/ sale/lost (month / year)	Value (replacement cost) (Thousand Dram)
1. Land	a)				
	b)				
	c)				
2. Buildings	a)				
	b)				
	c)				
3. Other structures	a)				
	b)				
	c)				
4. Transport equipment	a)				
	b)				
	c)				
5. Other machinery	a)				
	b)				

F4. Why did you not avail of any loan to finance your business?

(Enter "1" for YES; "2" for NO)

- 1 Has other source of income
- 2 Burdensome requirements
- 3 Unaware of source
- 4 High interest rate for loans
- 5 Others, specify _____

1	
2	
3	
4	
5	

SECTION G. OTHER INFORMATION

G1. In your opinion, how much is the average real income of small producing unit (organisation or person) in Armenia by the following industries

(Fill only those rows where you have estimates)

(Thousand dram)

1	Mining and Quarrying	
2	Manufacturing	
3	Construction	
4	Wholesale trade	
5	Retail trade	
6	Transportation	
7	Education	
8	Health	
9	Other services	

G2. In your opinion, what share of their real income should small producing units report to state bodies, to be able to receive at least minimal profit.

- 1 up to 20%
- 2 21-50 %
- 3 51-80 %
- 4 81 and more
- 5 totally (no need to hide anything)

☐

End Interview

Thank You!!!