

SURVEYS ON MILK AND MILK PRODUCTS

Study Visit on Agricultural Statistics - Israel
Rome, 20-23 February 2017

Dr. Colomba Sermoneta

Agricultural Statistics Division
Project manager on:
Animal production statistics
Fishery
Food security



Legal aspects

Currently, the statistical surveys of milk sector are two:

- Monthly survey of milk and milk products
- Annual survey of milk and milk products

In force legislation:

- Council Directive 96/16/EC of 19 March 1996 on statistical surveys of milk and milk products amended by 2003/107/EC.
- Commission Decision 97/80/EC and subsequent modification of 6 October 2004.

Legal aspects

Council Directive 96/16/EC represents the legal basis for the two surveys (it defines the units and the products).

Commission Decision 97/80/EC lays down provisions for the implementation of Council Directive 96/16/EC.

According to the european legislation the results of the annual and monthly survey are given to the European Commission through special tables (Edamis System).

Legal aspects: European legislation purposes

- Have statistical figures of the European countries, concerning the milk sector, for the Common Market Organisation (CMO).
- Establish common criteria in the European countries for the surveys of milk production and utilization (definition of the area, variables to be included, etc.).

Units and observation field

A) Milk enterprises that only collect milk and cream without processing (i.e. producers cooperatives, producers associations, etc.)

B) Milk enterprises that collect and/or transform milk and cream in products (i.e. dairies etc..)

The farms that produce milk and don't transform it in products inside their farms and all the other structures (warehouses, stores, shops, etc.) that are in the sector but are not milk enterprises are excluded from the observation field.

Monthly survey and sampling

The sample used is simple random, stratified, one stage (total units in the sample for each year is about 400 units).

It represents about the 16% of the universe of the active enterprises.

The sampling units are classified into seven strata. The 7-th includes all the big enterprises of the frame.

Monthly survey

Material for the enterprises

Before the interview, are sent:

- a letter with the aim to inform about the survey purposes, the information that will be asked, the legislation concerning the obligation to answer and the data confidentiality,
- a questionnaire and the instructions for the filling,
- a table of the cheeses

Monthly survey

Material for the company charged of data collection:

- Instructions;
- Questionnaire;
- Legislation concerning the obligation to answer and the data confidentiality;
- List of the enterprises to be interviewed;
- Records definition (ISTAT→Company and Company →ISTAT);
- Check of mistakes and inconsistencies;
- Table of the cheeses.

Monthly survey

Data collection is carried out every month by a private company, through CATI interview (*Computer Assisted Telephone Interview*), referring to the month previous the interview.

CATI technique enables to have mistakes signals during the data recording phase; it's possible to act and to ask to the unit for a data confirmation or correction.

Data editing is carried out by means of AGAIN tool and comparisons of time series of the same enterprises.

Total non-responses:

for the estimation of the variables, the processing of total non-responses implies a modification on the population weights that change according to the response rate.

Monthly survey: Questionnaire

The questionnaire consists of two sections.

Sec. 1 – RAW MATERIALS COLLECTED and EXIT: milk, cream and others.

Sec. 2 – PRODUCTS OBTAINED Drinking milk, Cream, Acidified milk, Concentrated milk , Cream milk powder, whole milk powder and partly skimmed-milk powder, Skimmed-milk powder, Butter, Cheese (total and made from cow's milk only), Processed cheese and Ricotta cheese.



Monthly survey: Questionnaire

For the raw materials the quantities are collected in quintals while for the Fat content and Protein content in percentage.

In particular for cow's milk (whole, semi-skimmed and skimmed) it is obtained:

- the quantity collected or bought at the farms;
- the quantity received or bought from other enterprises;
- the quantity of milk imported.

Also for “cream” the quantities collected or received are asked.



Annual survey

The **annual survey** is carried out for the whole frame; the frame is periodically updated. For 2016 it was constituted of about 2.200 units.

Data collection is carried out by CATI technique.

Annual survey: Questionnaire

The questionnaire consists of two sections.

Sec. 1 – RAW MATERIALS COLLECTED and EXIT: Cow's milk, Ewe's milk, Goats' milk, Buffalo milk, cream and other products.

Sez. 2 – PRODUCTS OBTAINED: (Fresh and Manufactured Products).

For both sections the quantities (in quintals) and the Fat content and Protein content are asked.

In particular for milk (of all kinds), cream and other raw materials, it is obtained:

- the quantity collected or bought at the farms;
- the quantity received or bought from other enterprises;
- the quantity of milk imported.

Annual survey: Questionnaire

In the Section “**Products obtained**” there are:

A) Fresh products:

- Drinking milk (whole, semi-skimmed and skimmed and classified for duration)
- Cream of fat content not exceeding 29 % or over 29 %;
- Acidified milk (Yoghurts), divided in “with additives” (fruit etc.) and “without additives”;
- Drinks with a milk base;
- Other fresh products (Milk jelly and others);
- Buttermilk .

B) Manufactured products:

- Concentrated milk (unsweetened and sweetened).
- Powdered dairy products (cream milk powder, milk powder (whole partly skimmed and skimmed), buttermilk, other powder products).

Annual survey: Questionnaire

B) Manufactured products:

- Butter (*normal* with milk fat content $\geq 80\%$, *rendered and butteroil* with milk fat content $> 85\%$, *light* with milk fat content $< 80\%$, *from whey* obtained from milk whey (resulting from a previous product) manufacturing.
- Other yellow fat dairy products.
- Cheese
 - Cheese from cows' milk (pure)
 - Cheese from ewes' milk (pure)
 - Cheese from goats' milk (pure)
 - Cheese from buffalo milk (pure)
 - Others (mixed)
- Processed cheese
- Ricotta cheese
- Casein and caseinates
- Whey

Annual survey

Data processing with AGAIN tool and computerized procedures: automatic, deterministic and interactive, on the basis of “historical knowledge” of the enterprises.

Correction for total non-responses: monthly and annual regression.

Monthly integration: through the units that have answered to the monthly survey of the same year, with possible completion of the 12 months.

Annual integration: through the units that have answered to the annual survey until 3 years previous the reference year.

Monthly and annual survey : Dissemination

The results of the surveys are given to the European Commission with special tables (Edamis System Web Forms):

Table A - Monthly

Table B - Annual

Table D-G - Annual

Table H - Annual

Monthly and annual survey : Dissemination

Published in ISTAT Web Site:

<http://agri.istat.it>

Istat.it Agriculture and livestock

home | data | documentation
useful links | map | contact us | versione italiana

search

Path Home : data : browse data : livestock and animal production : milk and dairy products

- ▶ economic results of agricultural holdings
- ▶ agricultural prices
- ▶ farm structure
- ▶ crops
- ▼ livestock and animal production
 - ▼ milk and dairy products
 - ▶ livestock
 - ▶ slaughtering
 - ▶ livestock import-export
 - ▶ PDO, PGI and TSG quality products
 - ▶ agritourism
 - ▶ production means
 - ▶ forestry
 - ▶ hunting
 - ▶ fishery

Tab. LME - Monthly survey on cow's milk and dairy products (quantity in thousands of tons)

Tab. L01 - Number of producer units operating in dairy sector, by kind

Tab. L02 - Milk yielded by dairy industry in farms by type (quintals)

Tab. L03 - Cow's milk yielded by dairy industry in farms and milk fat and protein content (in quintals)

Tab. L04 - Quantity of milk and cream available for dairy industry, by animal species

Tab. L05 - Fresh and manufactured dairy products, by kind of manufacturing unit

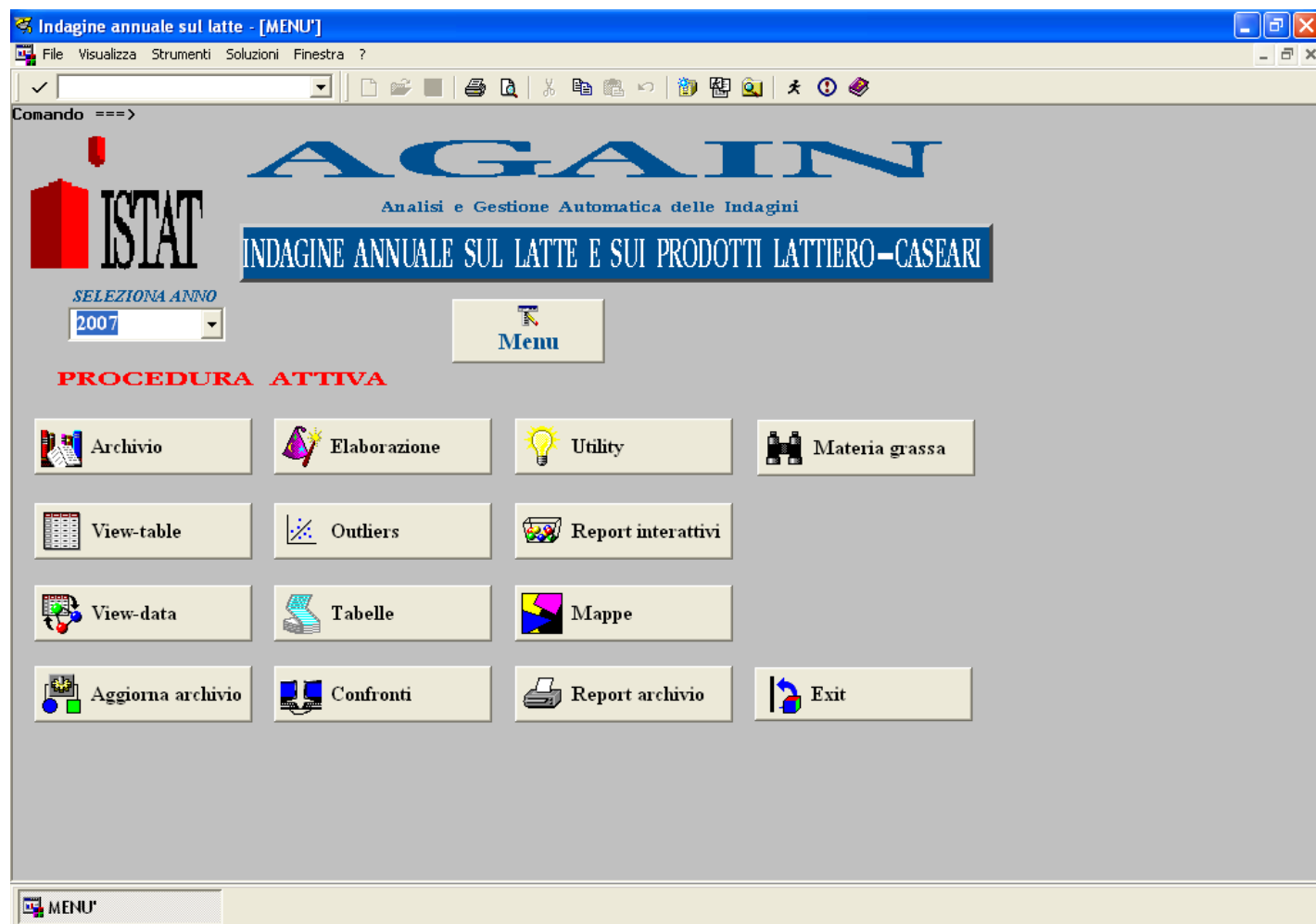
Tab. L06 - Industrial production of drinking milk, butter and cheese (in quintals)

Tab. L07 - Dairy manufacturing units and cows' milk collected, by amplitude classes and type (tons/year)

Tab. L08 - Dairy manufacturing units and production, by kind of product and amplitude classes (tons/year)

Tab. L09 - Milk production by species, destination and products obtained in farm (quantities in quintals)

AGAIN System: Main screen



AGAIN System: Frame screen

The screenshot shows a Windows-style application window titled "Indagine annuale sul latte - [INDAGINE ANNUALE SUL LATTE - CONSULTAZIONE]". The interface includes a menu bar (File, Visualizza, Strumenti, Soluzioni, Finestra), a toolbar with various icons, and a main data entry area. At the top left, there are radio buttons for "Ragione sociale", "Provincia", "Regione", "Codice sirio", "Anno", "Stato attività", and "Tipologia". Below these is a "DIGITA CODICE" label and a text input field. To the right, a "Ragione sociale" label is positioned above a large empty text area. Further right is a vertical stack of buttons: "Salva", "Nuova", "Clear", "Dati", and "Exit". The main form consists of several labeled input fields: "CODICE SIRIO", "RAGIONE SOCIALE", "INDIRIZZO", "COMUNE", "PROVINCIA", "REGIONE", "TELEFONO", "CODICE FISCALE", "STATO ATTIVITA'", "REFERENTE", and "NOTA". Some fields have sub-labels like "TIPO", "FAX", and "PARTITA IVA". On the right side of the form, there is a vertical list of input boxes under the label "ANNI". The status bar at the bottom left shows "INDAGINE ANNUALE..." with a small icon.

AGAIN System: View table

Indagine annuale sul latte - [STATISTICA MENSILE DEL BESTIAME MACELLATO - View-table]

File Visualizza Strumenti Soluzioni Finestra ?

VIEW TABLE [Exit](#)

SORT PER

	Coefficiente	Regione	Tipologia	Strato	TOTALE MATERIE PRIME ENTRATE	TOTALE LATTE DI VACCA	TOTALE LATTE
610	1	150	4	1	950	0	C
611	1	150	4	2	3772	1466	1466
612	1	160	1	2	4587	3055	3055
613	1	160	4	1	6872	6872	C
614	1	150	4	1	466	0	C
615	1	150	4	1	3912	0	C
616	1	140	4	7	85803	62689	C
617	1	150	4	1	10800	0	C
618	1	150	4	2	2114	1629	1629
619	1	150	4	2	4269	2830	2830
620	1	30	2	3	7432	7432	7432
621	1	170	4	2	1962	1962	1962
622	1	200	4	1	41300	0	C
623	1	80	2	5	41853	41853	41853
624	1	80	4	4	14623	14623	14623
625	1	50	6	4	32263	32263	21376
626	1	170	4	4	25000	25000	25000
627	1	20	2	4	18130	18130	18130
628	1	200	2	1	7315	0	C
629	1	200	2	1	5151	0	C
630	1	170	2	2	3508	3508	3508

STATISTICA MENSIL...

AGAIN System: Interactive editing of a single record

Indagine annuale sul latte - [FSEDIT LATAN.AN2007 Obs 1 Screen 1]

File Modifica Visualizza Strumenti Cerca Soluzioni Finestra ?

✓

Impresa 0000191M00050 Regione 150 Tipologia 4 CASEIFICI E CENTRALI DEL LATTE

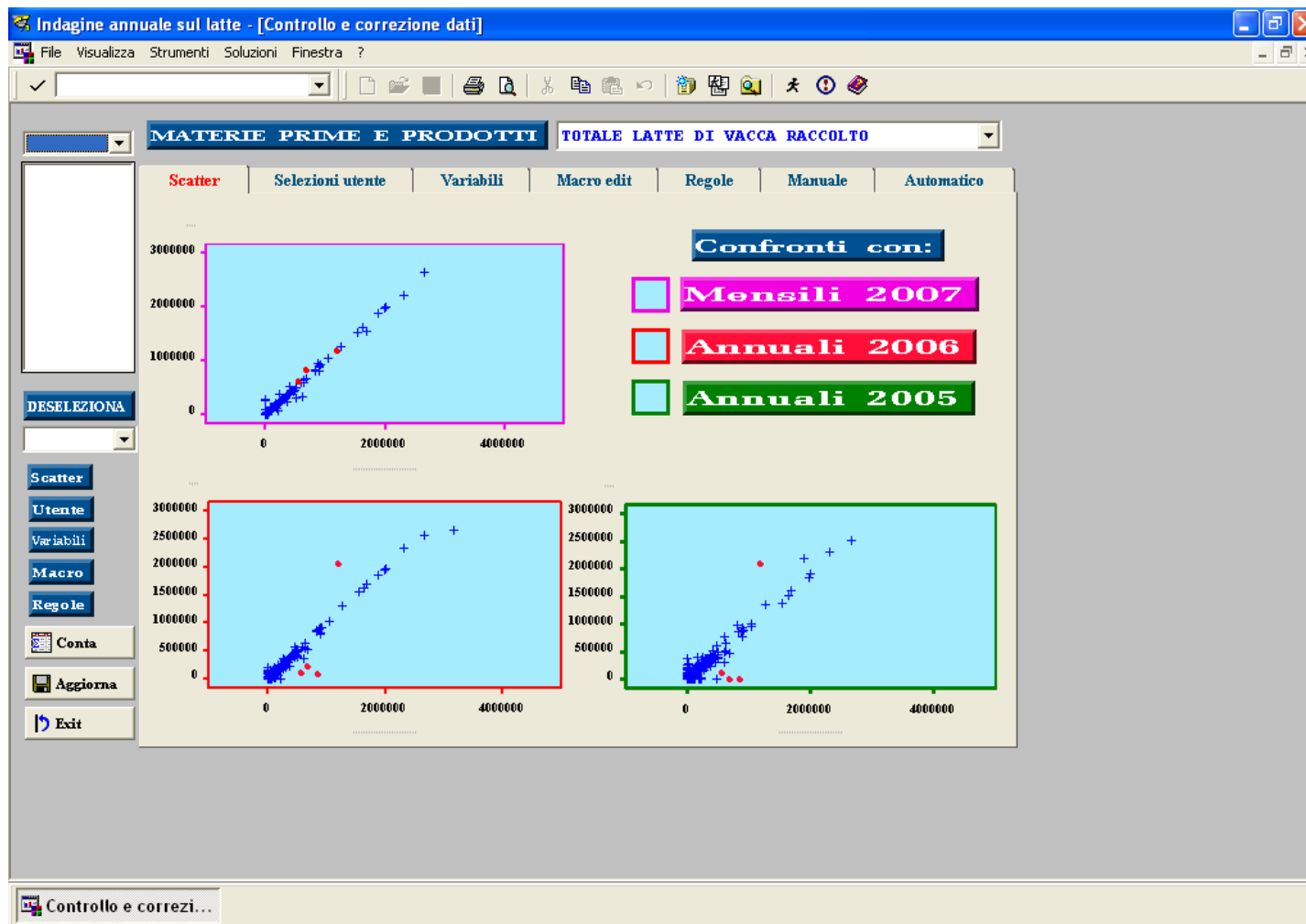
SEZIONE 1° - MATERIE PRIME ANNO 2007

MATERIE PRIME ENTRATE NELLO STABILIMENTO: 1032932

	Quantita'	M.G.	Proteine
LATTE DI VACCA : 1032932			
-RACCOLTO DIRETTAMENTE : 596890			
Intero	596890	377	325
Parzialmente scremato	0	0	0
Scremato	0	0	0
-RICEVUTO DA ALTRI : 436042			
Intero	436042	351	323
Parzialmente scremato	0	0	0
Scremato	0	0	0
-IMPORTATO			
Di tutti i tipi	0	0	0
LATTE DI PECORA	0	0	0
LATTE DI CAPRA	0	0	0
LATTE DI BUFALA	0	0	0
CREMA RACCOLTA	0	0	0
CREMA RICEVUTA	0	0	0
CREMA IMPORTATA	0	0	0
ALTRE MATERIE PRIME RACCOLTE/RICEVUTE	0	0	0
Siero di latte	0	0	0
Cagliata	0	0	0
Formaggi destinati alla trasformazione	0	0	0
Altre materie grasse	0	0	0
Altre materie prime non indicate altrove	0	0	0
ALTRE MATERIE PRIME IMPORTATE	0	0	0
Siero di latte	0	0	0
Cagliata	0	0	0
Formaggi destinati alla trasformazione	0	0	0
Altre materie grasse	0	0	0
Altre materie prime non indicate altrove	0	0	0

FSEDIT LATAN.AN2...

AGAIN System: Outliers screen – Scatter plot



AGAIN System: Comparison screen

Indagine annuale sul latte - [Tavole interattive]

File Visualizza Strumenti Soluzioni Finestra ?

SELEZIONI

REGIONI

PIEMONTE
VALLE D'AOSTA
LOMBARDIA
TRENTINO-ALTO AD.

IMPRESE SELEZIONATE 22

Deseleziona

VARIABILI DI CALCOLO

TOTALE MATERIE PRIME ENTRATE
TOTALE LATTE DI VACCA
TOTALE LATTE DI VACCA RACCOLTO
Latte di vacca raccolto intero
Latte di vacca raccolto parzialmente scremato
Latte di vacca raccolto scremato

ANNI DI CONFRONTO

2007
2006
2005
2004
2003
2002
2001
2000
1999
1998
1997

SELEZIONE DATI

☒ Valori assoluti
☐ Differenze assolute
☐ Differenze percentuali

VARIABILE DI CLASSIFICAZIONE

REGIONI

Formati

CIRCOSCRIZIONI
REGIONI
PROVINCIE
TIPOLOGIA

REPORT TABELLA

Anni

2007 2006

Dati

Valori assoluti

Classificazione

Per REGIONI

TOTALE LATTE DI VACCA RACCOLTO

DEFINIZIONE OUTPUT

☐ Listing ☒ Html ☐ Rtf

Clear Esegui Exit

Tavole interattive Visualizzatore dei ri...

AGAIN System: Comparison screen - Results

Indagine annuale sul latte - [Visualizzatore dei risultati - g:\latan\stampett22007.html]

File Modifica Visualizza Strumenti Soluzioni Finestra ?

Risultati

- Risultati
 - Print: INDAGINE ANNUALE
 - Tabulate: Numero di unita'
 - Print: INDAGINE ANNUALE
 - Print: INDAGINE ANNUALE
 - Data set WORK.N

INDAGINE ANNUALE SUL LATTE E SUI PRODOTTI LATTIERO-CASEARI - ANNO 2007
TAVOLE DI CONFRONTO - ANNI 2007 2006

REGIONI	2007 TOTALE LATTE DI VACCA RACCOLTO	2007 TOTALE LATTE DI VACCA RACCOLTO N. Imprese	2006 TOTALE LATTE DI VACCA RACCOLTO	2006 TOTALE LATTE DI VACCA RACCOLTO N. Imprese
20	330443	22	313814	23
.	330443	22	313814	23

Tavole interattive Visualizzatore dei ri...

AGAIN System: Tables screen - Results

Indagine annuale sul latte - [Visualizzatore dei risultati - g:\francesca\tavole\anno2007\tav2.xls]

File Modifica Visualizza Vai Strumenti Soluzioni Finestra ?

Indice Latte raccolto presso le aziende agricole dall'industria lattiero-casearia,

1 Latte raccolto presso le aziende agricole dall'industria lattiero-casearia, per regione - anno 2007

REGIONI	Latte di tutti i tipi	Latte di vacca	% di materia grassa	% di materia proteica
Piemonte	7.215.452	7.176.526	3,85	3,38
Valle d'Aosta	330.443	330.443	3,51	3,24
Lombardia	38.752.188	38.672.238	3,73	3,37
Trentino-Alto Adige	5.217.851	5.211.303	3,96	3,42
-Bolzano	3.721.010	3.718.284	4,01	3,45
-Trento	1.496.841	1.493.019	3,84	3,34
Veneto	9.242.102	9.216.877	3,72	3,34
Friuli V. G.	2.761.465	2.749.347	3,78	3,41
Liguria	286.924	285.360	3,64	3,16
Emilia-Romagna	21.163.695	21.103.256	3,61	3,10
Toscana	1.360.789	607.401	3,54	3,18
Umbria	753.272	705.387	3,64	3,27
Marche	732.535	673.700	3,63	3,33
Lazio	6.043.841	5.278.189	3,66	3,24
Abruzzo	393.483	355.123	3,59	3,30
Molise	1.097.742	1.094.636	3,62	3,27
Campania	4.059.593	2.380.978	3,65	3,26
Puglia	2.304.329	2.243.187	3,57	3,29
Basilicata	263.574	250.992	3,55	3,21

Produrre tabella Visualizzatore dei ...

AGAIN System: Fat and Protein screen- Results

Indagine annuale sul latte - [Tavole interattive]

File Visualizza Strumenti Soluzioni Finestra ?

CALCOLO MATERIA GRASSA E PROTEINE

MATERIE PRIME E PRODOTTI TOTALE LATTE DI VACCA RACCOLTO

Report Grafico

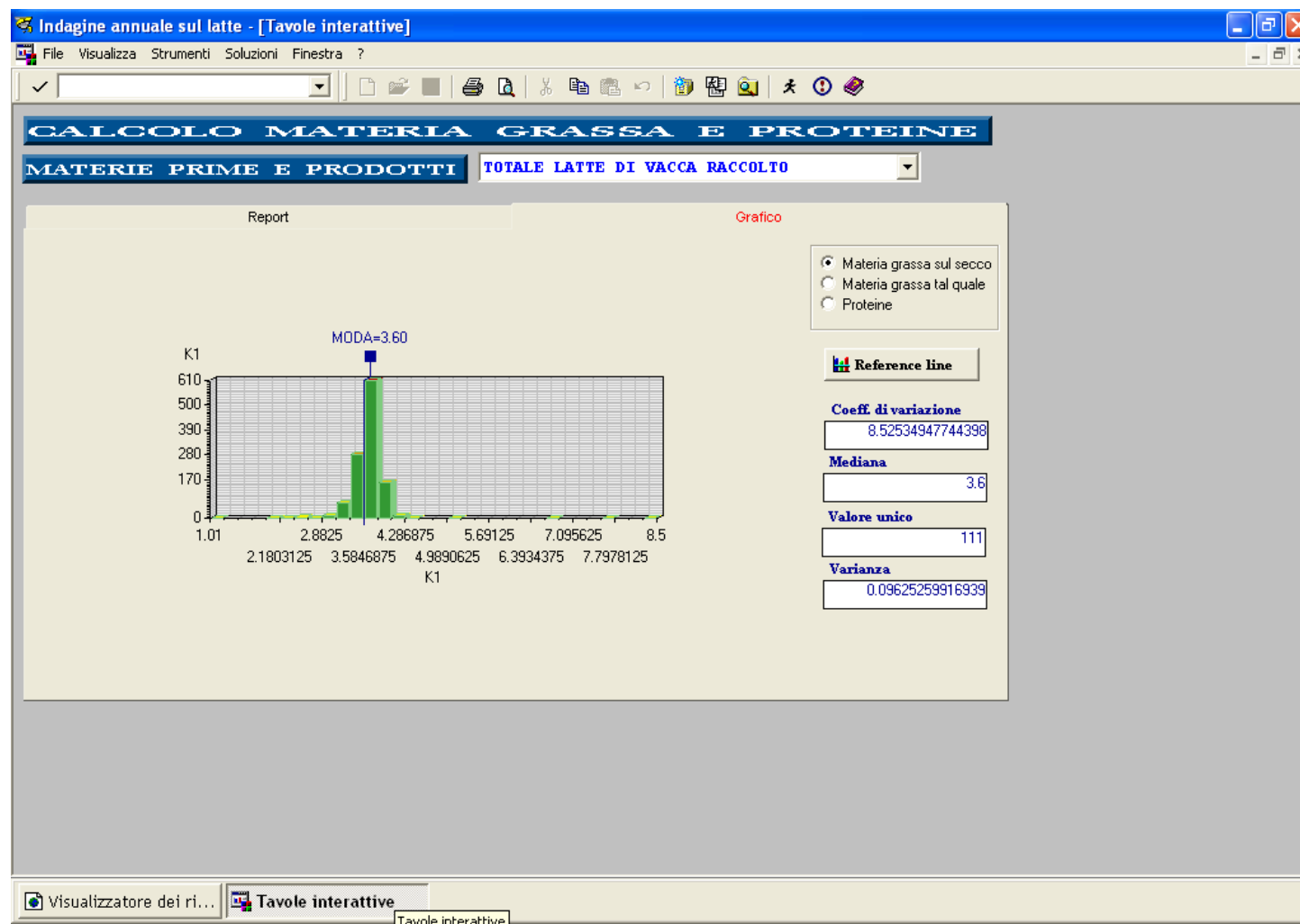
☐ Materia grassa sul secco
 ☐ Proteine
☐ Materia grassa tal quale
 ☐ Tutte

Clear Append Esegui Stampa Exit

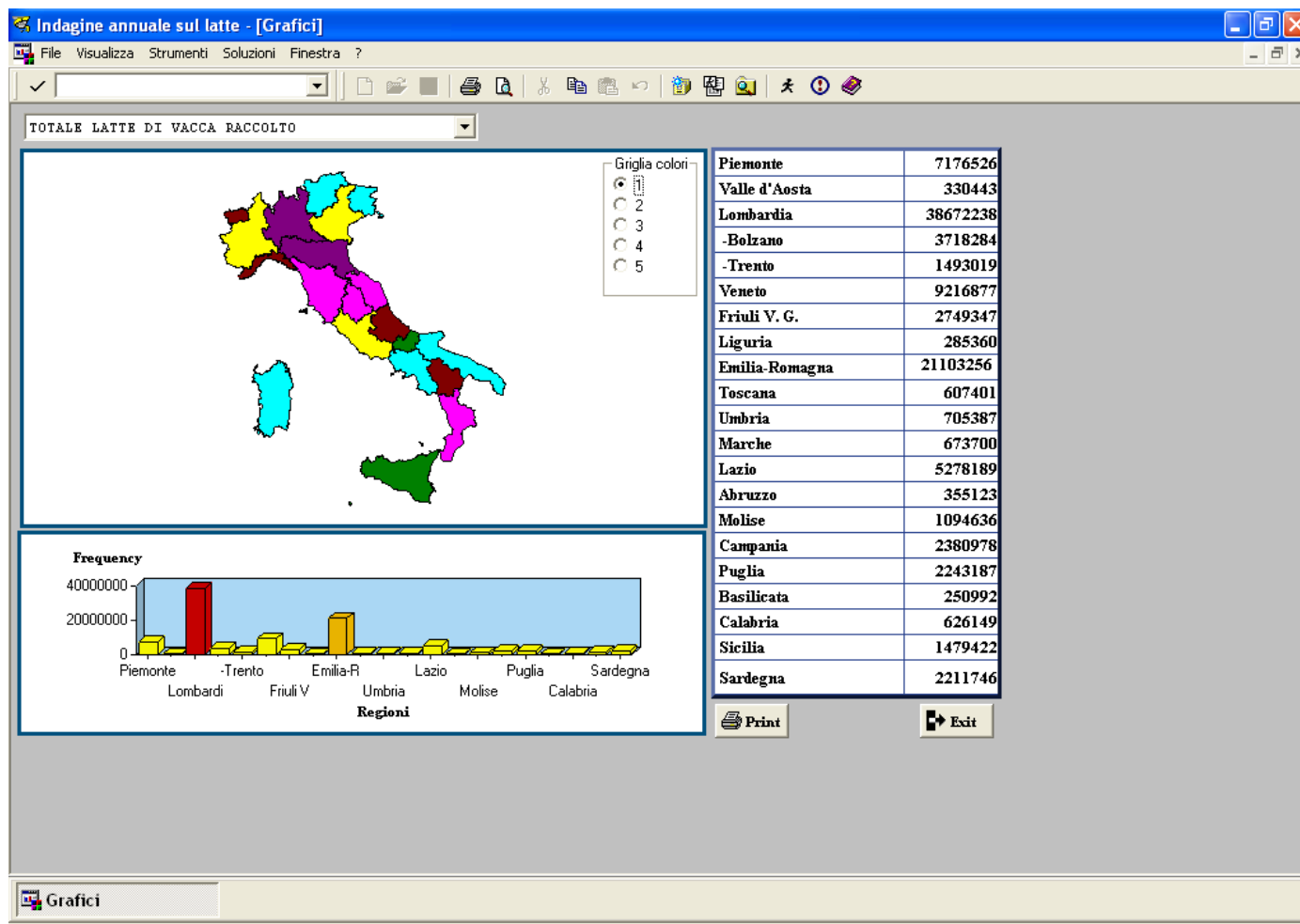
VARIABILE	TOTALE LATTE DI VACCA RACCOLTO		
N° UNITA'	1.571		
UNITA CON VALORI VALIDI - MATERIA GRASSA SU SECCO	1.145		
UNITA CON VALORI VALIDI - MATERIA GRASSA TAL QUALE			
N° UNITA CON VALORI VALIDI NELLE PROTEINE	951		
QUANTITA'	102.652.260	MINIMO	MASSIMO
MATERIA GRASSA SUL SECCO	3,71	1,01	8,50
MATERIA GRASSA TAL QUALE			
PROTEINE	3,32	1,70	7,00

Visualizzatore dei ri... Tavole interattive

AGAIN System: Fat and Protein screen- Graph



AGAIN System: Maps screen



THANK YOU
FOR YOUR ATTENTION!

